



Corridors of Statewide Significance

To:
CTB Workshop
September 16, 2009

By:
Mary Lynn Tischer, PhD

- **Corridors of Statewide Significance (CoSS) - Concept and Process of Identification**
- **Recommended CoSS**
- **Comparison Between CoSS and the Core Network of Roads**
- **Corridor Functions**
- **Next Steps**

CoSS as a Concept

- **Corridors of Statewide Significance (CoSS) introduced in VTrans2025 (called Multimodal Investment Networks (MINs))**
- **CoSS focus on multimodal solutions to moving people and goods**
- **Intent was to identify high priority multimodal solutions within the CoSS that would be given increased consideration over single-mode solutions in individual modal plans and programs**
- **CoSS include parallel roadways and modes – is broad in scope**

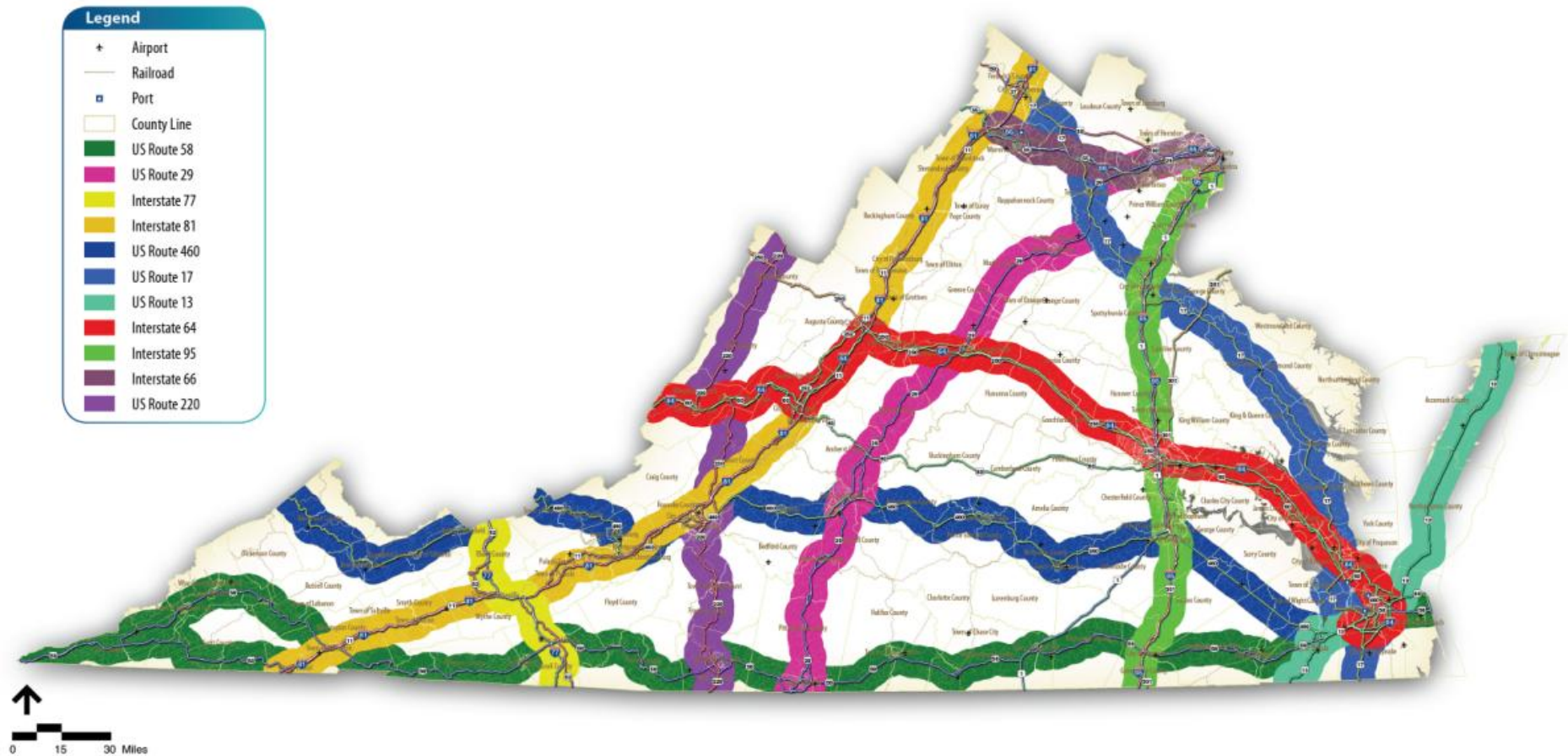
Corridors of Statewide Significance:

- **An integrated, multimodal system of transportation facilities that move people and goods between regions of the Commonwealth and between the Commonwealth and other states**
- **For example, the corridor that includes the Richmond to Washington, DC. connection involves not just I-95 but also Rt. 1, Rt. 301, I-295 I-495, VRE, Amtrak, CSX, Greyhound, Park and Ride lots, as well as additional facilities**

- **Involves multiple modes or is an extended freight corridor**
- **Connects regions/states/major activity centers**
- **Provides high volume of transport**
- **Provides a unique statewide function and/or addresses statewide goals**

- **Rail, transit, highway, aviation, port planners; MPO & PDC reps; &, VTrans Technical Committee applied the criteria to determine Corridors of Statewide Significance**
- **Eleven corridors identified**
- **The CTB may decide that there are fewer or more CoSS**

Recommended Corridors

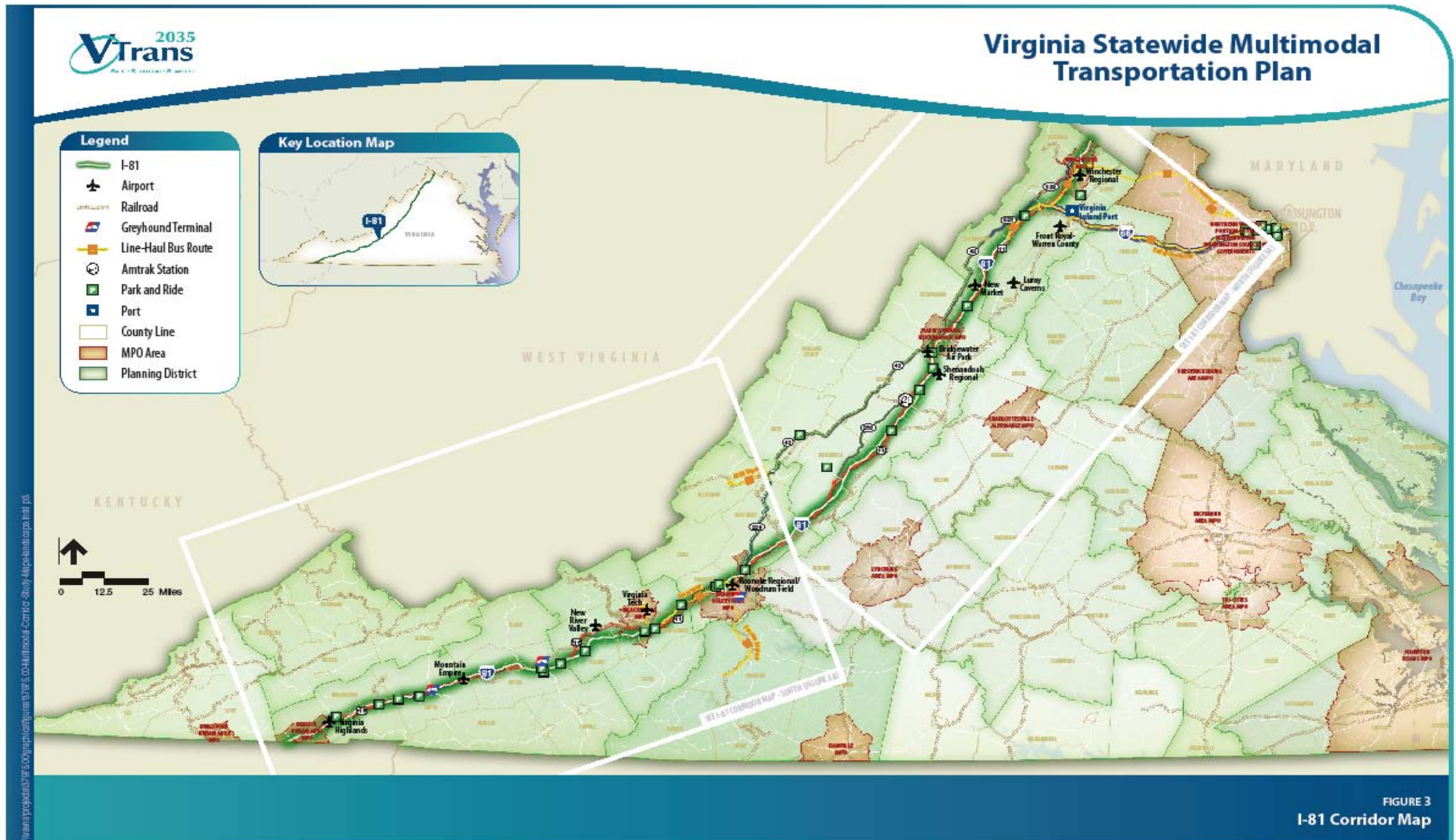


- **Inventory Corridors**
 - All Modal Facilities (Highway, Transit, Rail, Airports, Port Facilities)
 - Includes all Parallel Routes (i.e. U.S. 11 for I-81)
- **Determine How Corridors Function**
- **Analyze Performance**
- **Review Regional Planning Forum Information (Functions, Issues, Challenges)**
- **Review MPO, PDC, and Comprehensive Plans, VDOT 6-Year Plan, Other Studies/Plans**
- **Formulate Strategies**

Comparison Between CoSS and the Core Network of Roads

- **Corridors of Statewide Significance are:**
 - A subset of the highway classification system (4,147 miles)
 - Not limited to highways but includes **all** modal facilities
 - Of statewide and not local/regional significance
- **The Core Network of Roads includes all of the highway facilities in the corridors with which VTrans is concerned and all of the highways in the NHS (approximately 25,000 centerline miles)**
- **The NHS includes:**
 - Interstates
 - Intermodal Connectors
 - Principal Arterials
 - Strategic Highway Network Connectors

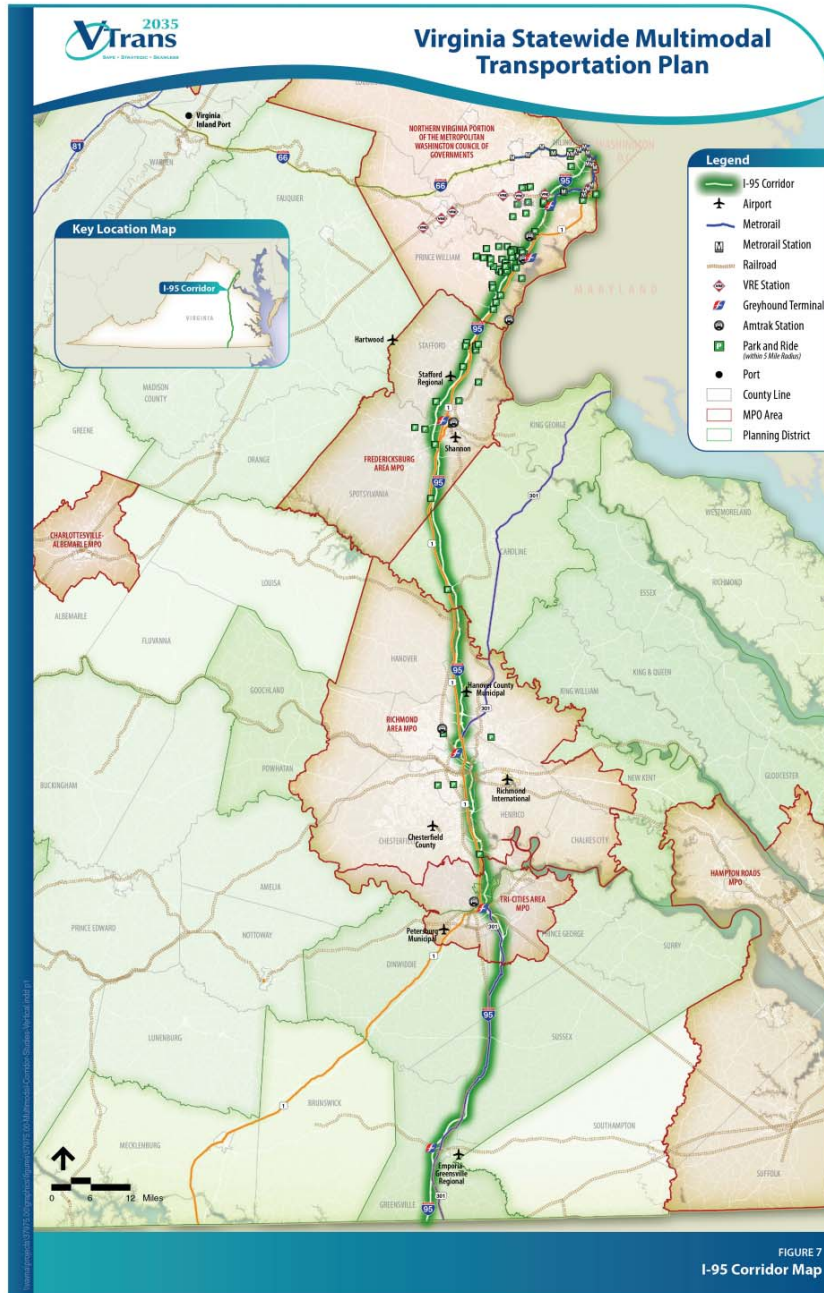
I-81 Corridor



I-81 Corridor Functions

Components: I-81, US 11, NS Crescent Corridor, Inland Port, Roanoke Regional Airport, US Bicycle Route 76, etc.

- **Freight corridor (trucks, Norfolk Southern rail lines)**
 - Truck traffic up to 40%
 - Norfolk Southern Crescent Corridor (western line)
- **Passenger link between urban centers**
 - Winchester, Harrisonburg, Staunton, Roanoke, Blacksburg, Bristol
- **Through travel**
 - Link between Tennessee, Pennsylvania, New York, I-40, I-80, I-90
- **Education**
 - Virginia Tech, JMU, over 20 other colleges and universities
- **Tourism**
 - Shenandoah National Park
 - State Parks and recreational areas
 - 2 National Forests

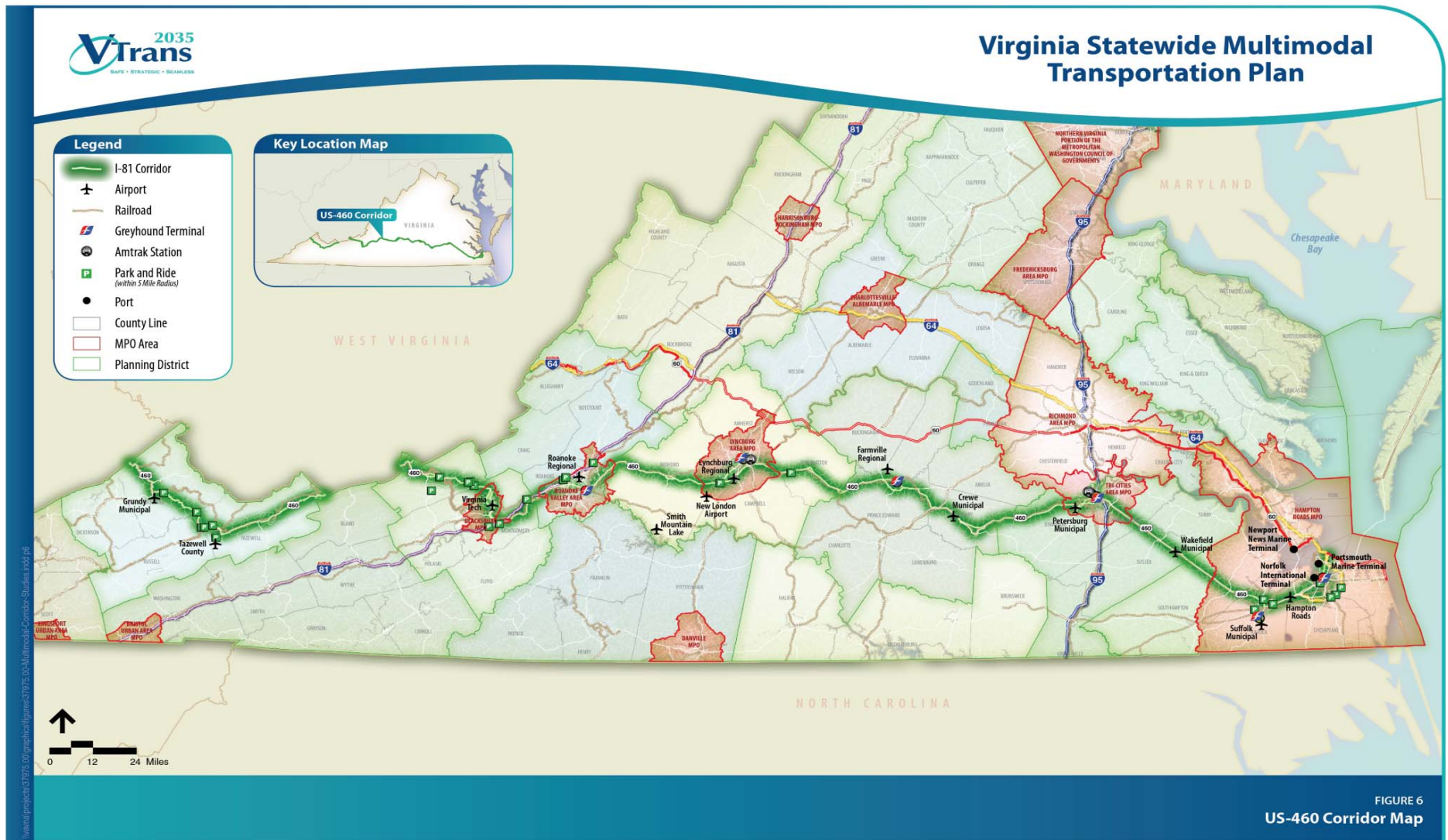


I-95 Corridor

I-95 Corridor Functions

Components: I-95, I-85, I-495, US 1, US 301, VRE, CSX, Port of Alexandria, US Bike Route 1, etc.

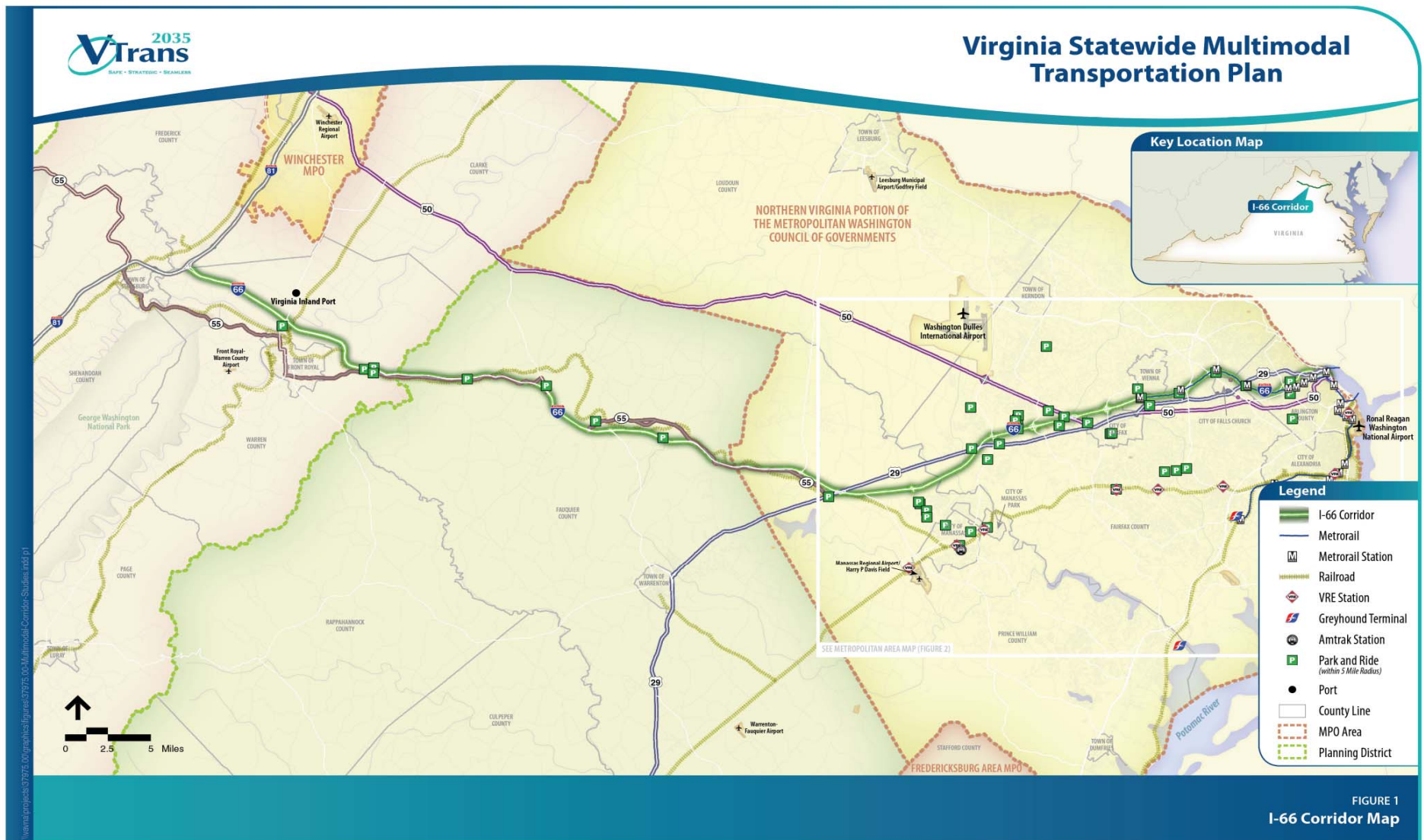
- **Commuter corridor**
 - Northern Virginia, Richmond
- **Through traffic**
 - “Main Street” of East Coast
- **Freight corridor**
 - Truck Traffic up to 18%
 - CSX National Gateway Corridor
- **Military access**
 - Ft. Belvoir, Ft. A.P. Hill, Quantico
- **Multi-modal corridor**
 - Metrorail, VRE, HOV/HOT Lanes
 - AMTRAK, multiple express bus services
- **Link to Maryland, Washington D.C., Capital Beltway and N.C.**



Components: US 460, Coalfields Expressway, NS Heartland Corridor, marine terminals, airports, James River, etc.

- **Freight corridor**
 - Truck traffic up to 16%
 - Link to Port of Virginia
 - Norfolk Southern Heartland Corridor
 - Important rail corridor between Port of Virginia and Midwest
- **Link between Hampton Roads and Western Virginia**
 - Petersburg and Lynchburg
 - U.S. 29 and I-81
 - Evacuation
- **Military**
 - Hampton Roads
- **Education**
 - Virginia Tech, Longwood, ODU, multiple other colleges/universities
- **Historic/tourism**

I-66 Corridor

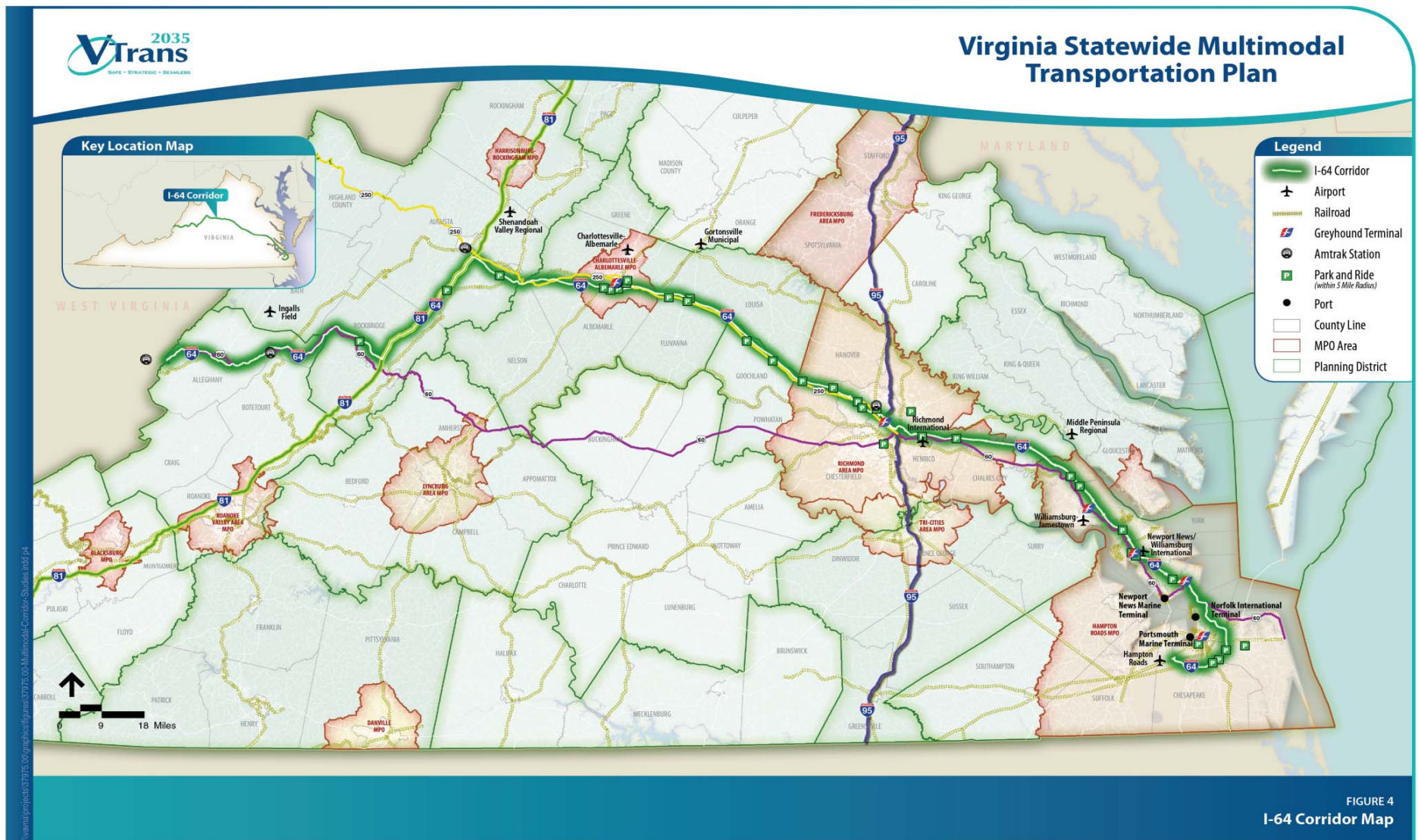


I-66 Corridor Functions

Components: I-66, US 29, VA 55, Dulles Toll Road, NS, Amtrak, Inland Port, Dulles Airport, VRE, etc.

- **Commuter corridor for Northern Virginia/Washington D.C.**
- **Freight (Inland Port accessibility, trucks)**
- **Link between I-81/western Virginia and D.C. Metro area (also for evacuation/security)**
- **Multi-modal corridor (Metrorail, VRE, express bus, HOV)**
- **Dulles Airport access**
- **Technology corridor**

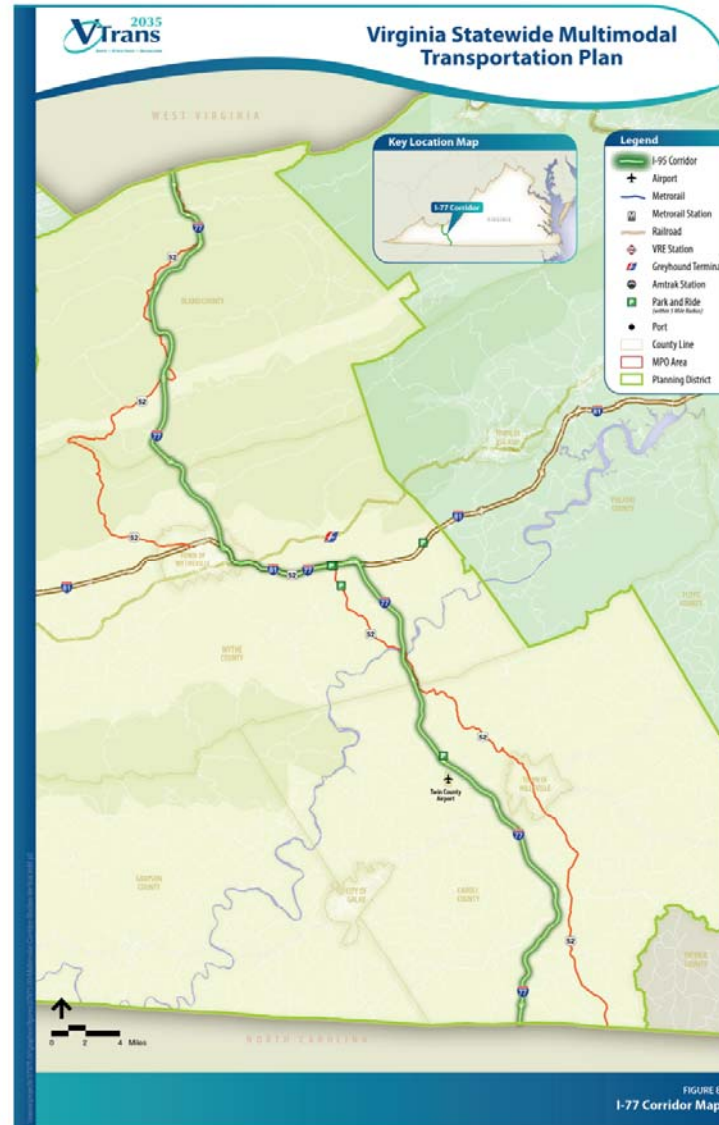
I-64 Corridor



Components: I-64, I-664, I-264, CSX, Amtrak, marine terminals, HRT, Port of Richmond, airports, etc.

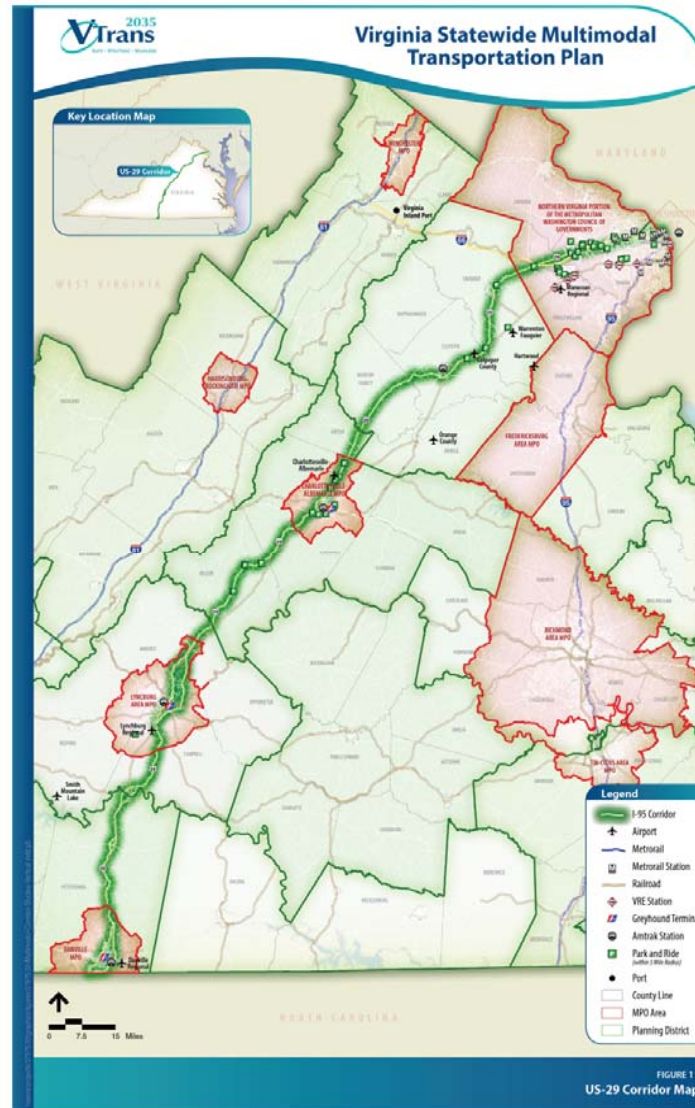
- **Freight corridor (east-west to coalfields, CSX rail lines, Hampton Roads port facilities, etc.)**
- **Link between major urban areas (Hampton Roads, Richmond, Charlottesville, Staunton, also for evacuation/security)**
- **Access across mountains to points west, I-81, and to West Virginia**
- **Military access (Hampton Roads area)**
- **Education (University of Virginia, University of Richmond, VCU, ODU, etc.)**
- **Tourism**

I-77 Corridor



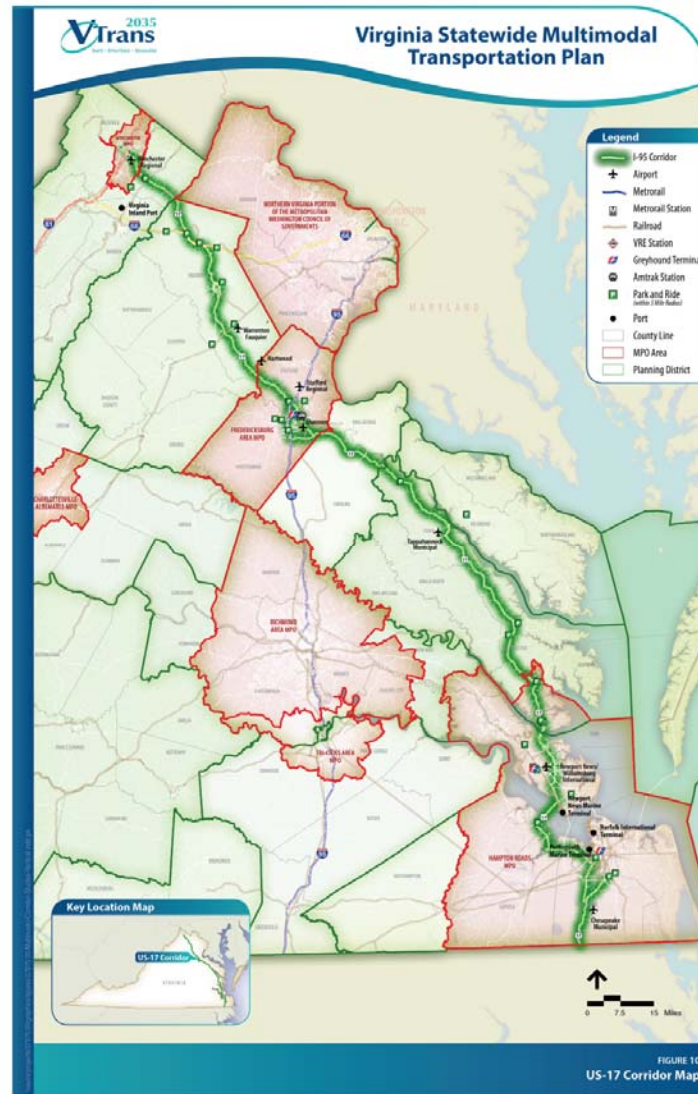
Components: I-77, US 52, VA 100

- **Multi-state connection (Ohio to North Carolina, through traffic)**
- **Connection through tunnels (Big Walker Mountain, East River Mountain)**
- **Freight connection to I-81**



Components: US 29, NS, Amtrak, airports

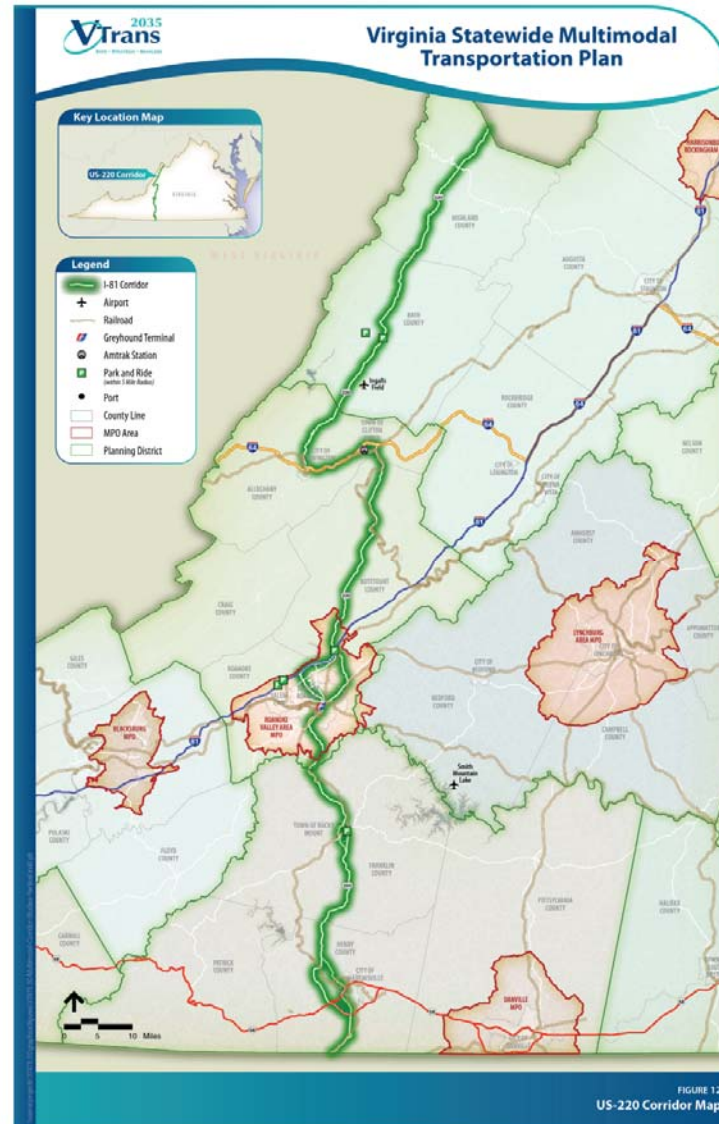
- **Connection between Northern Virginia, Charlottesville, Lynchburg, Danville**
- **Commuter route feeding Northern Virginia and other urban areas**
- **Freight alternative to I-81/I-95 (major rail corridor)**
- **Cultural resources/tourism**



U.S. 17 Corridor Functions

Components: US 17, airports

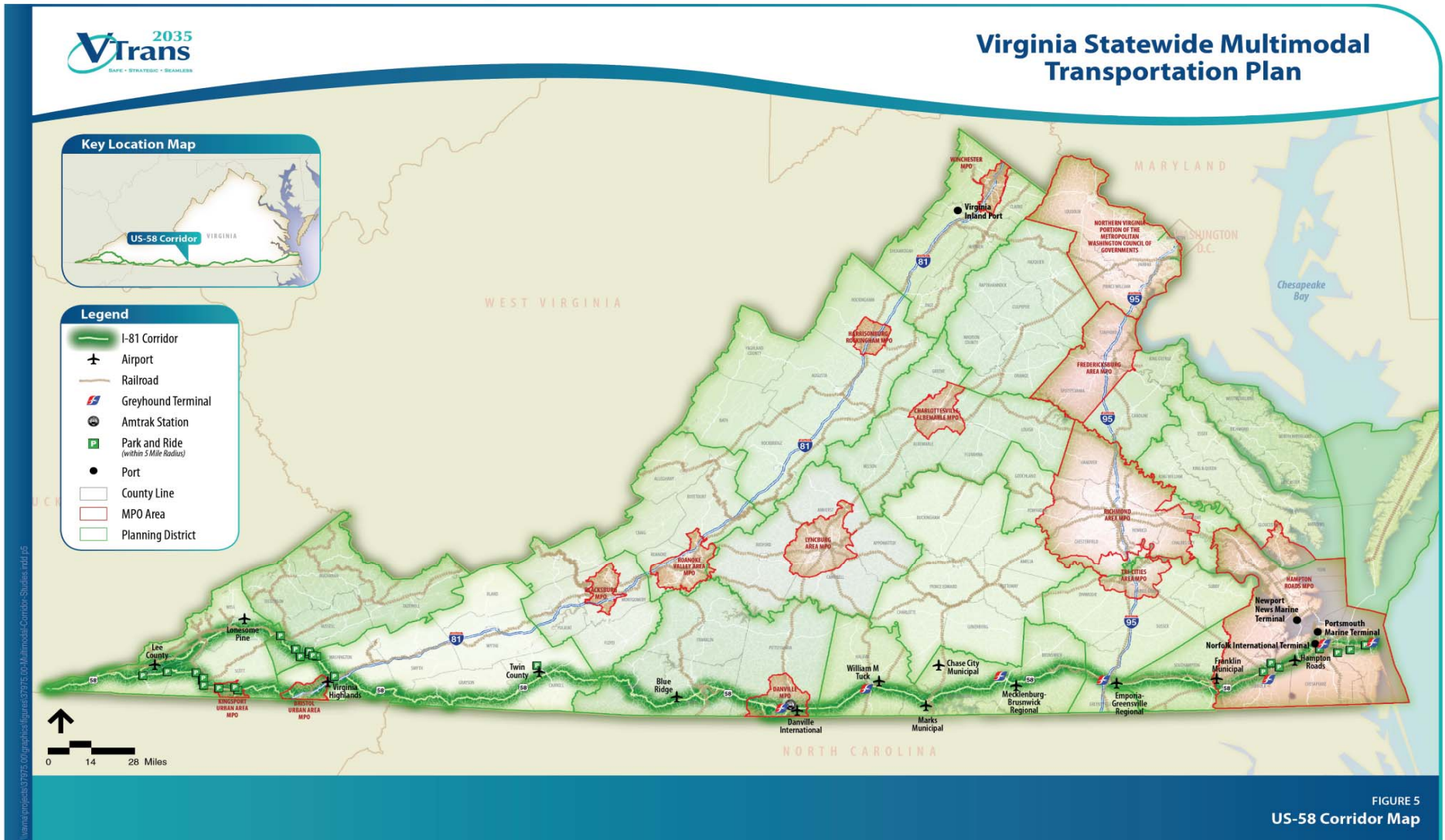
- Major I-95 alternative to shore destinations and through traffic (alternative route from Hampton Roads to Northern Virginia)
- Freight corridor for trucks between Hampton Roads and I-95
- Access to Northern Neck and Middle Peninsula (tourism)



Components: US 220, future I-73, NS, airports

- Link between I-81 and I-64 and connection to West Virginia
- Scenic route/tourism
- Logging and freight route

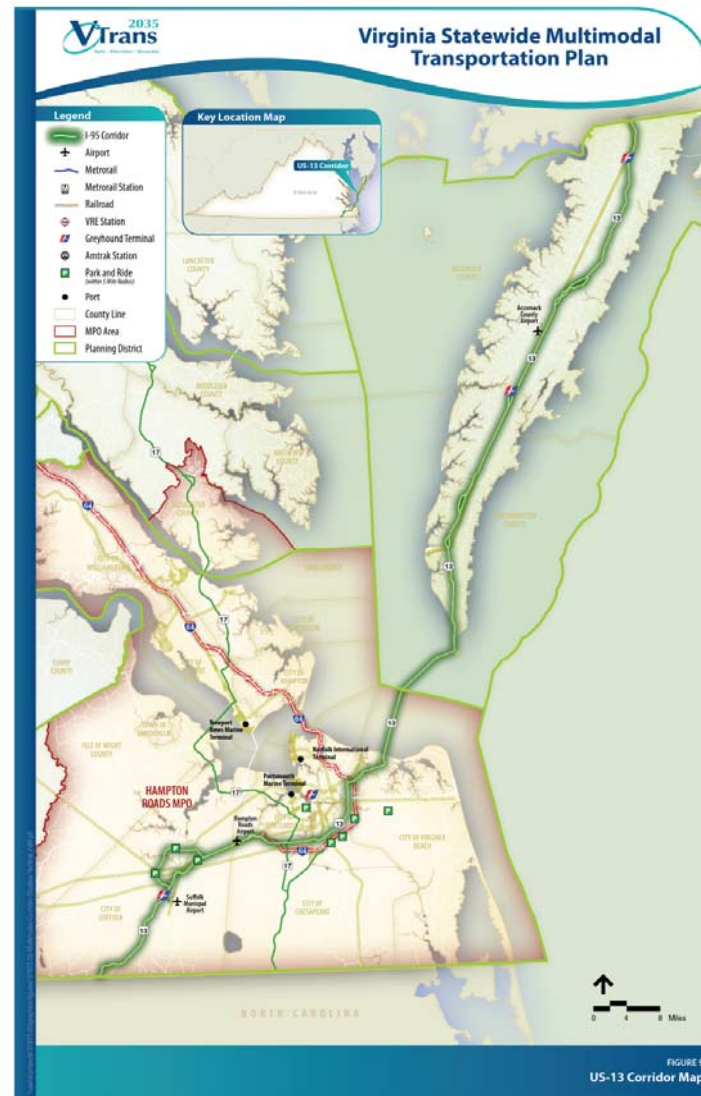
U.S. 58 Corridor



Components: US 58, NS, marine terminals, Chesapeake and Hampton Roads airports

- **Local access for Southern Virginia Cities**
- **Link to Hampton Roads for freight and passengers for Southern Virginia**
- **Economic development**
- **Manufacturing/goods-to-market/warehousing/distribution**

U.S. 13 Corridor



Components: US 13, HRT, Park and Ride lots, VA 168, CSX, NS, marine terminals, 4 airports, etc.

- **Link between Hampton Roads and Eastern Shore for both passengers and freight (Bay Coast Railroad with ferry barge, Chesapeake Bay Bridge-Tunnel)**
- **Main street through Eastern Shore**
- **Access to beaches, Chincoteague, Assateague, NASA Wallops Island**

- **Receive CTB Feedback on CoSS**
- **Finalize Corridors**
- **Identify Strategies**
- **Complete Draft CoSS Report**
- **Obtain Public Input**
- **Finalize Report**