

Route 501 Bridge Replacement Location Study & Environmental Assessment

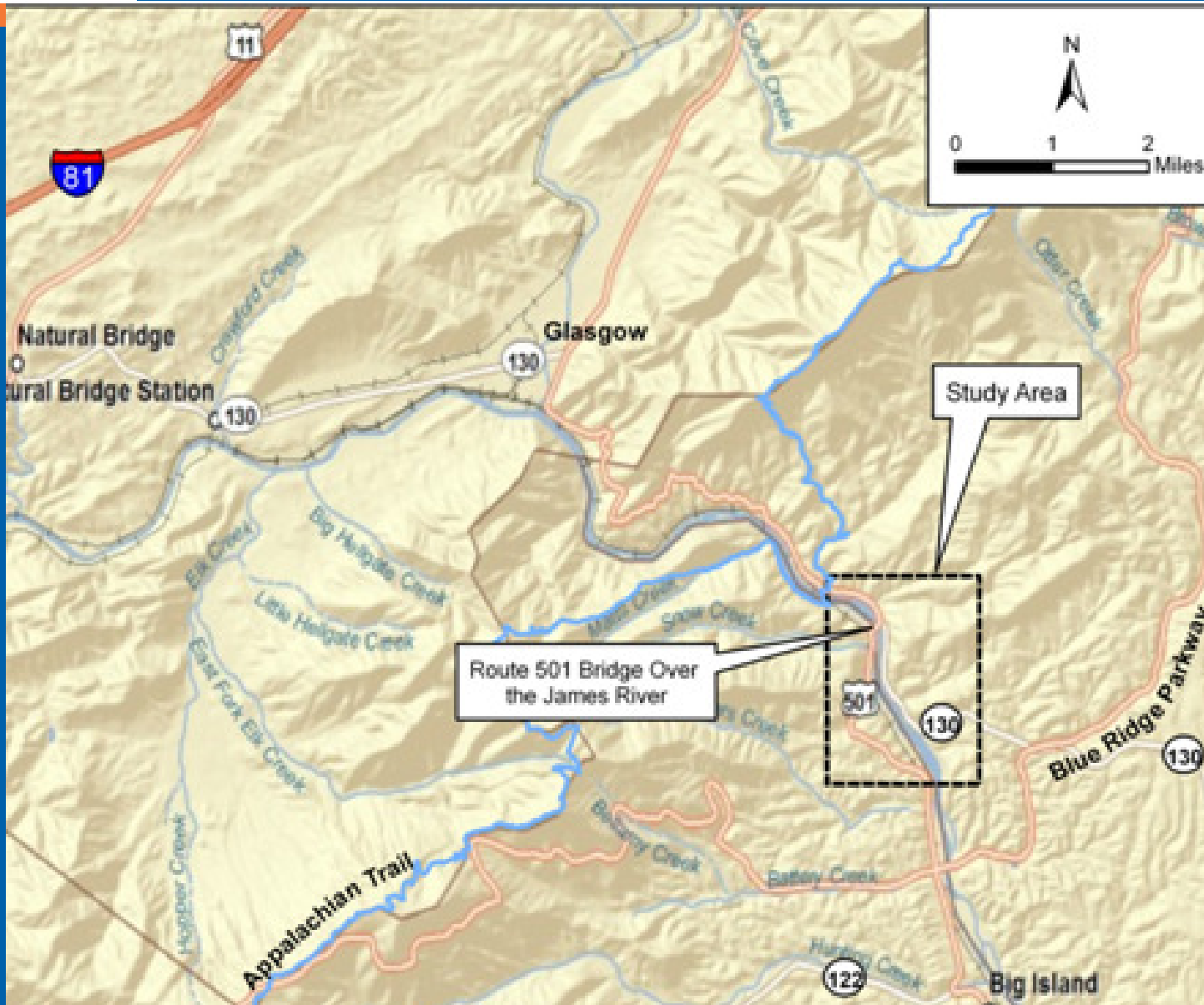
Angel Deem

Location Studies Program Manager

VDOT Environmental

- Present Location Study for replacement of the Route 501 bridge over the James River & CSX Railway in Amherst and Bedford counties
- Summarize results of FHWA Environmental Assessment (EA) and input from public involvement





Project Background

- Existing bridge was constructed in 1921 with the deck replaced in 1967.
- Bridge has been identified as a priority for replacement due to structural and roadway geometric deficiencies.
- Bridge periodically subjected to weight restrictions, most recently in 2009.
- Fully funded through construction in VDOT's Six-Year Program

- Replace crossing of James River & CSX approximately 0.7 mile south of existing crossing
- Redesign intersection of Routes 501 and 130 to improve traffic operations
 - Left turn lane for westbound Rt. 501/130
 - Right turn lane for eastbound Rt. 130
- Existing bridge to be demolished & removed

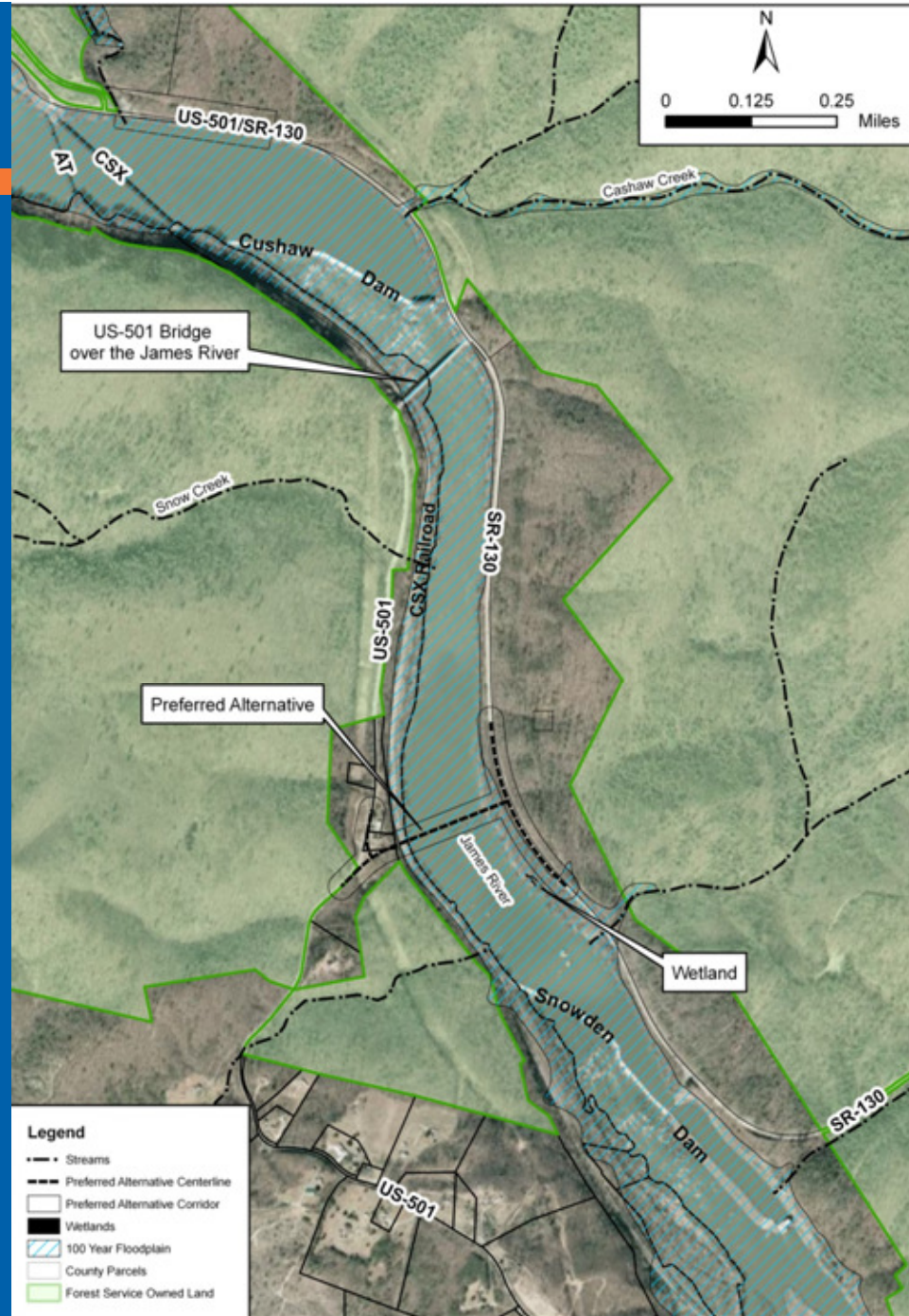


Figure 6: Environmental Features

Table 2: Summary of Impacts

Category	Approx. Impacts of Build Alt
Residential Displacements (No.)	1*
Residential Property (acres)	4
Businesses Displaced (No.)	0
Community Facilities (No.)	0
Forest Service Land (acres)	0
Environmental Justice Populations (No.)	0
Farmland or Farmland Soils (acres)	0
Historic Properties (No.)	0
Waters of the U.S. (linear feet bridged)	1,000
Wetlands (acres)	0
Forest (acres)	10
Floodplains (acres filled/acres cleared)	0.5 / 6
Threatened and Endangered Species (No.)	0
Hazardous Materials Sites Impacted (No.)	0
Noise (No. of Receptors Impacted)	0
Section 4(f) Properties (No.)	0

*Residence is abandoned

EA approved for public availability April 17, 2012

Comment Period on Draft EA: May 20th – June 20th

Public hearing: June 4, 2012

- 4 persons in attendance

Comments Received: 0

- Request Location Approval from CTB in September 2012
- Complete Revised EA & request FHWA approval in October 2012