

# VIRGINIA ASSOCIATION OF METROPOLITAN PLANNING ORGANIZATIONS

Presented to:  
Commonwealth Transportation Board  
September 19, 2012



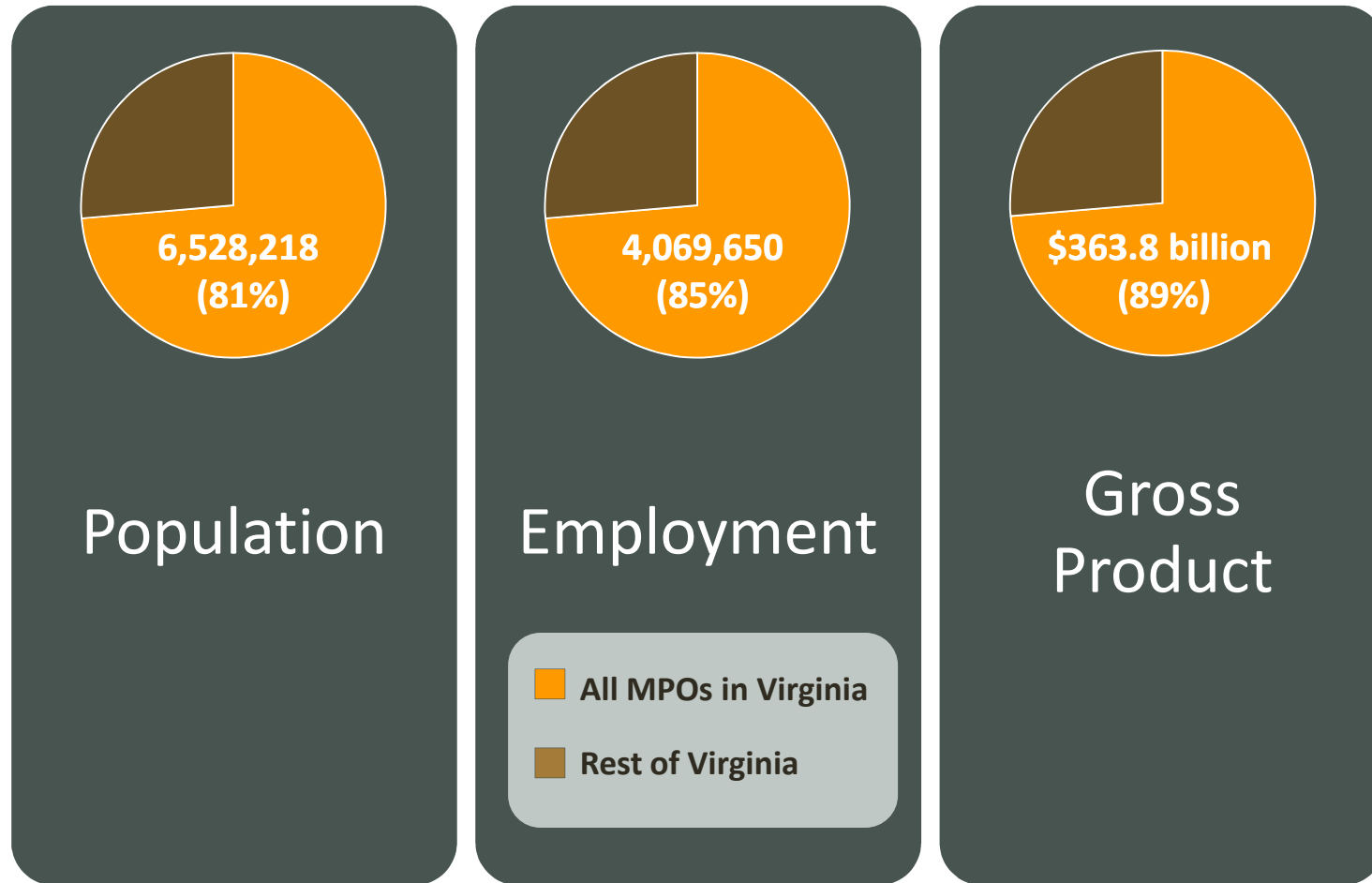
# WHAT IS VAMPO?

**Per the 2009 Virginia House of Delegates Joint Resolution 756, VAMPO is a forum for MPOs of Virginia to:**

- Exchange information and experiences
- Enhance the practice of metropolitan transportation planning
- Provide education opportunities and discuss issues relative to local, State and Federal policies and requirements for transportation planning
- Provide recommendations to the Virginia Secretary of Transportation and the General Assembly on statutory, regulatory and policy improvements required to provide for effective transportation planning, programming and funding in the Commonwealth



# QUICK FACTS



Note: "All MPOs in Virginia" includes the Virginia counties and cities included in the following MPOs: Blacksburg-Christiansburg-Montgomery, Bristol, Central Virginia, Charlottesville-Albemarle, Danville, Fredericksburg, Hampton Roads, Harrisonburg-Rockingham, Kingsport, Northern Virginia, Richmond, Roanoke Valley Area, Tri-Cities, Winchester-Frederick.

Data Source: Weldon Cooper Center for Public Service (2011), Bureau of Economic Analysis (2010), and Minnesota IMPLAN Group, Inc. (2008).



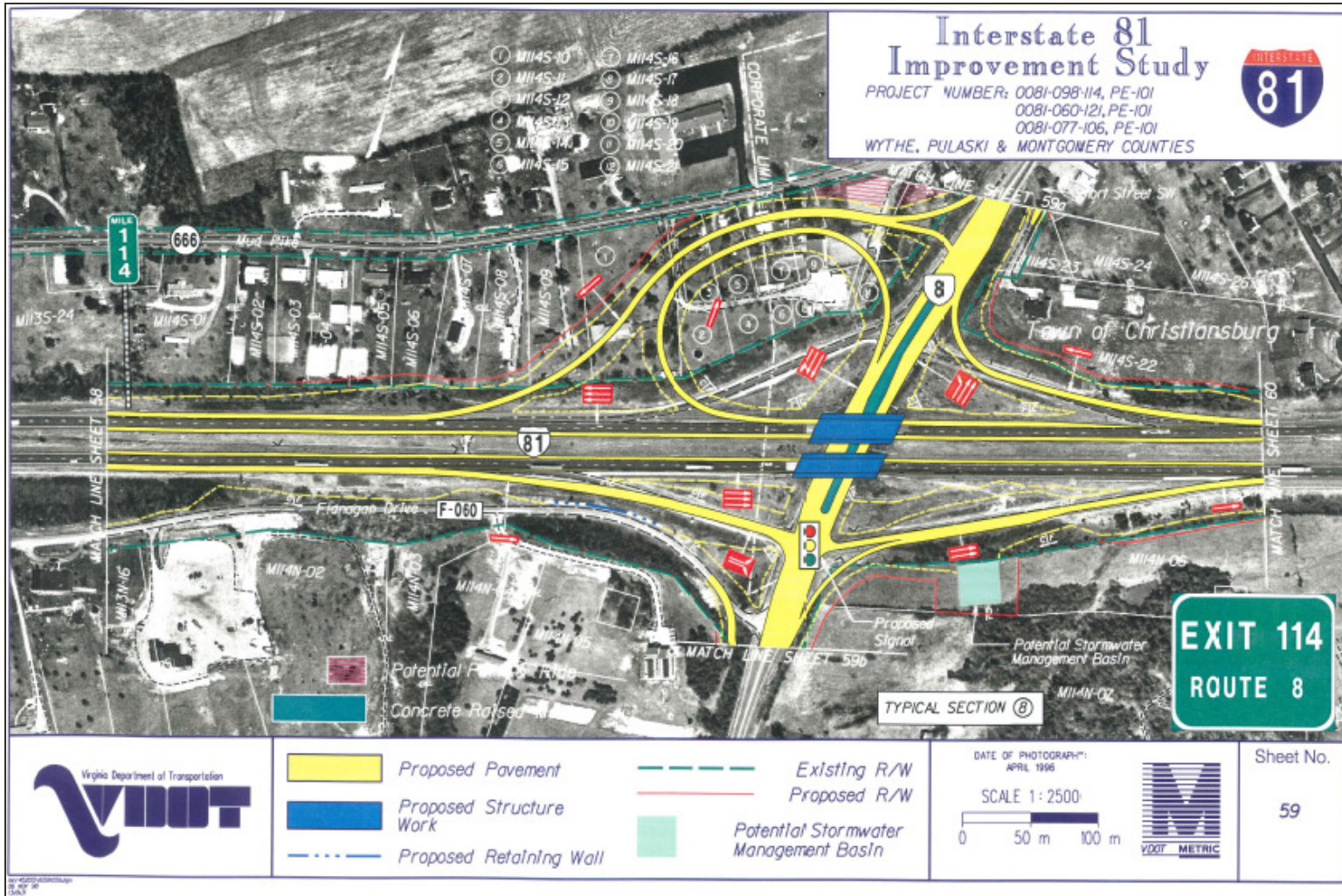
# A Tour of VAMPO



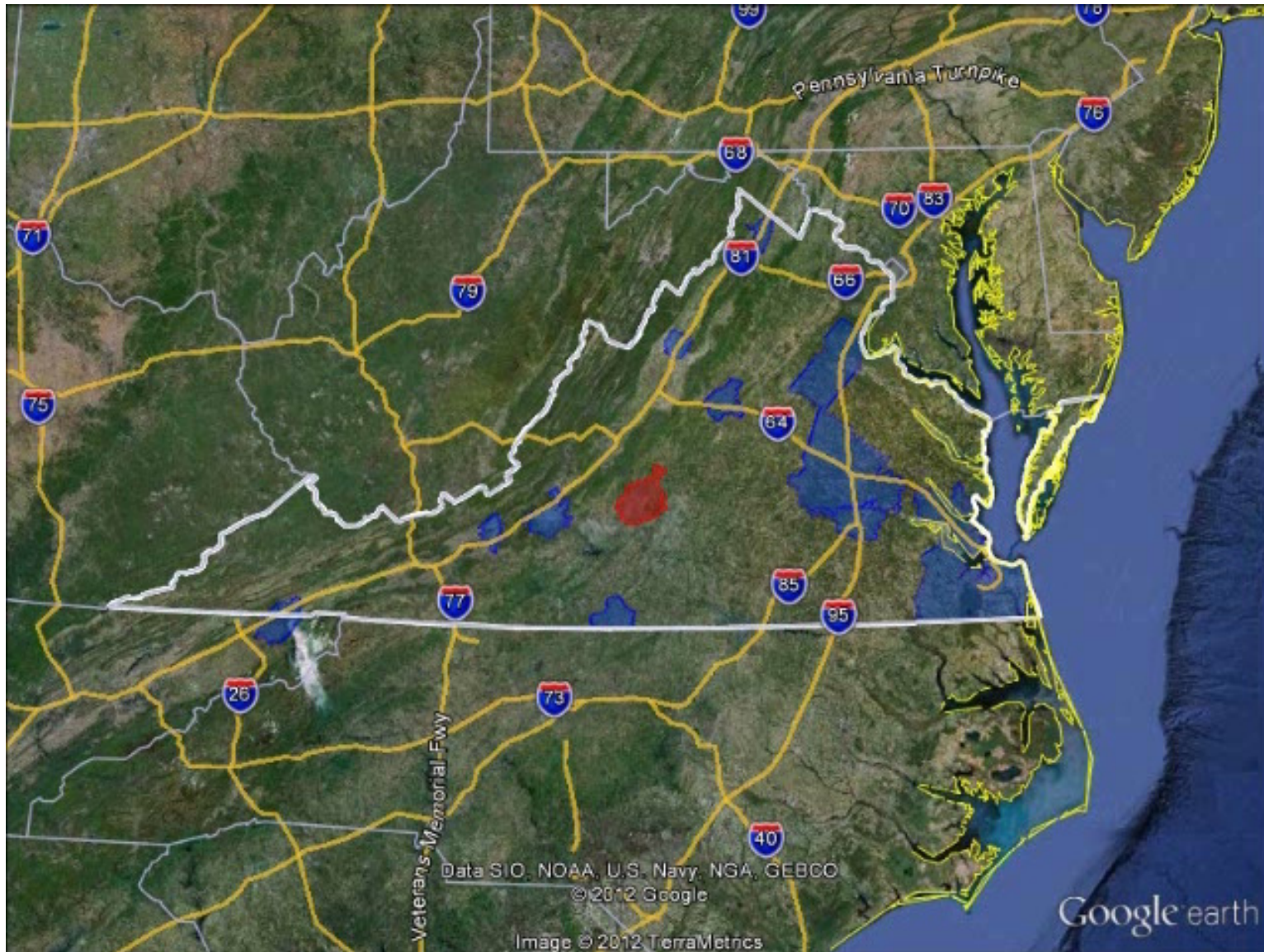
# BLACKSBURG-CHRISTIANSBURG-MONTGOMERY



# BLACKSBURG-CHRISTIANSBURG-MONTGOMERY



# CENTRAL VIRGINIA



# CENTRAL VIRGINIA

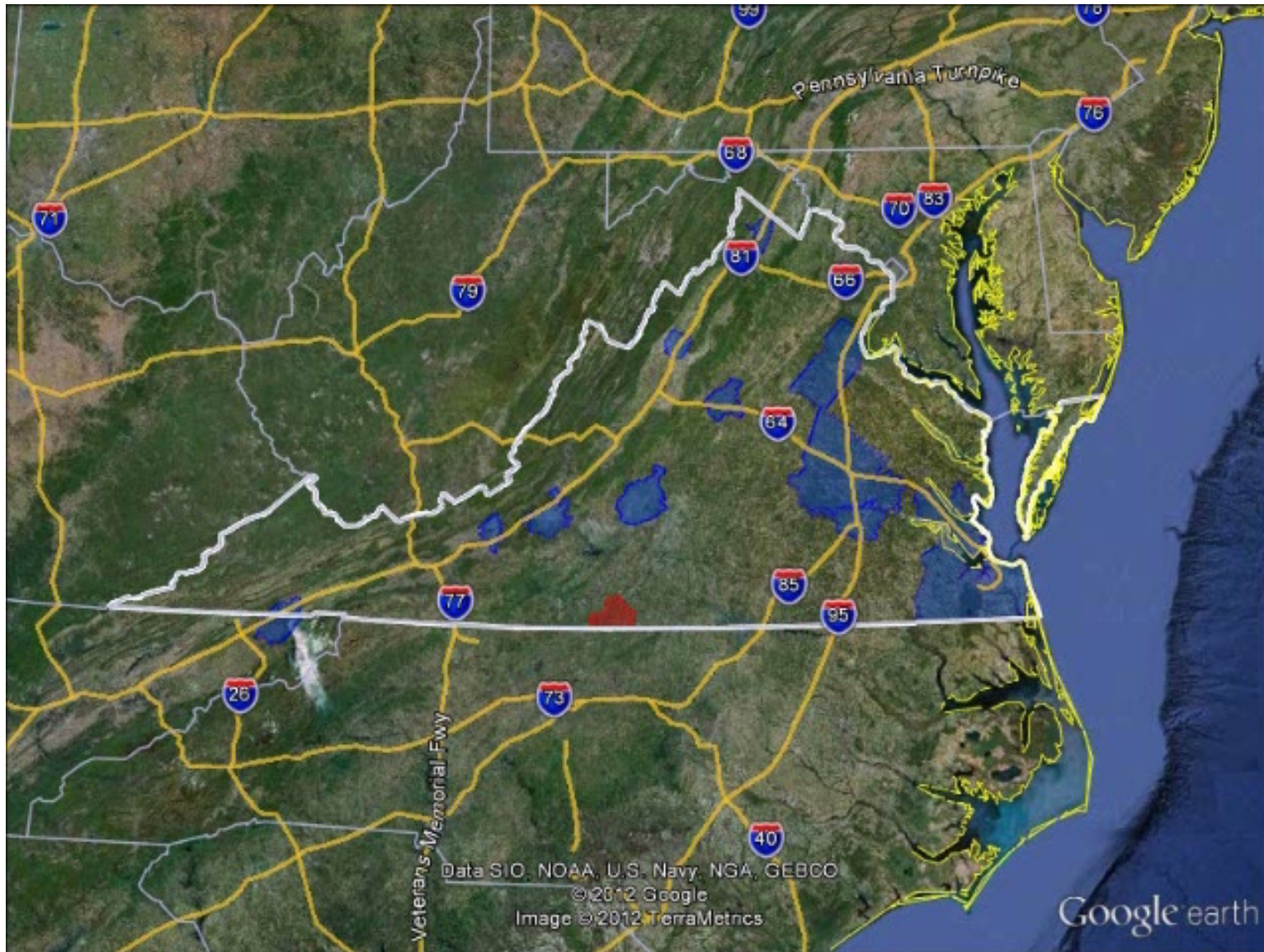
## Priority: Transportation improvements due to Liberty University's growth

- Improvements to Candler's Mountain Road Interchange at US 460
- Expansion of Candler's Mountain Road to Wards Road
- Expansion of Wards Road
- Expansion of Odd Fellows Road connecting Routes 460 and Business 29
- Expansion of Harvard Street when the Liberty tunnel is completed





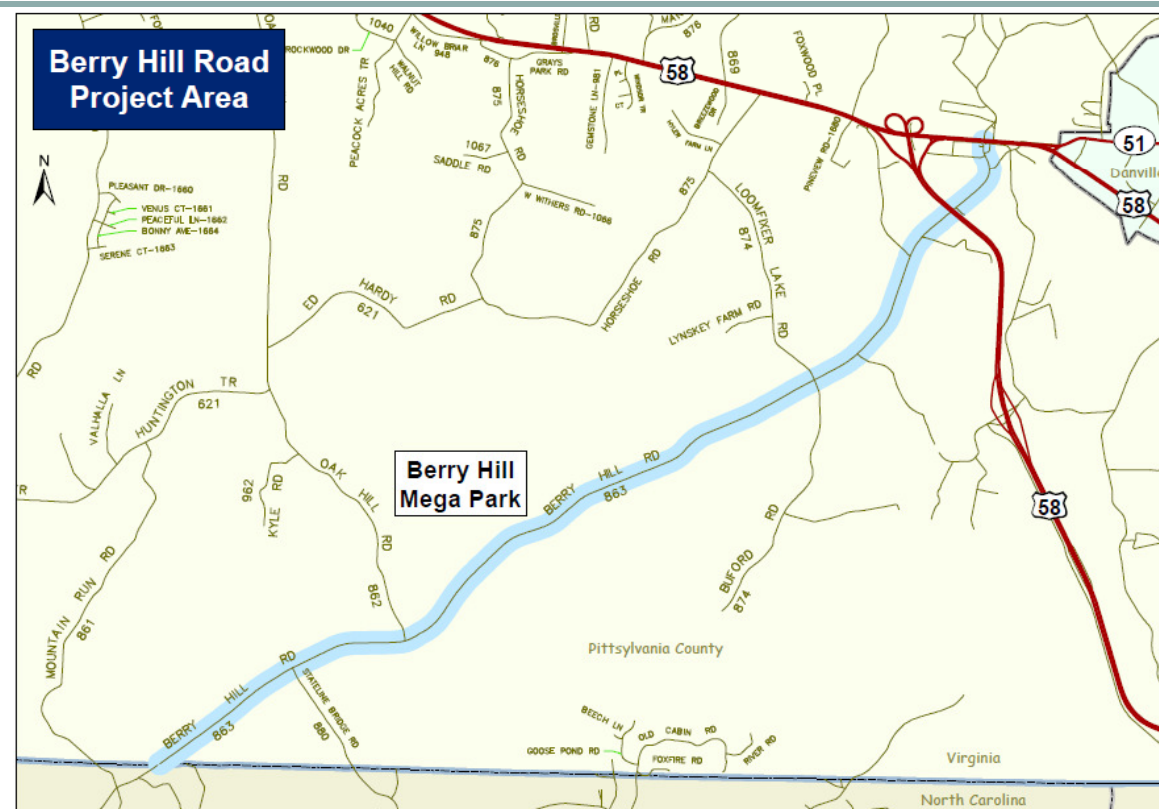
# DANVILLE



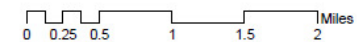
# DANVILLE

- Located in south-western Pittsylvania County
- Roadway classification changing from secondary highway to primary highway
- Development of plans and future roadway improvements
- Route now eligible for more state and federal funding
- Improves connectivity between Danville and Eden
- Emphasizes accessibility to 3,500 acre Berry Hill industrial mega park

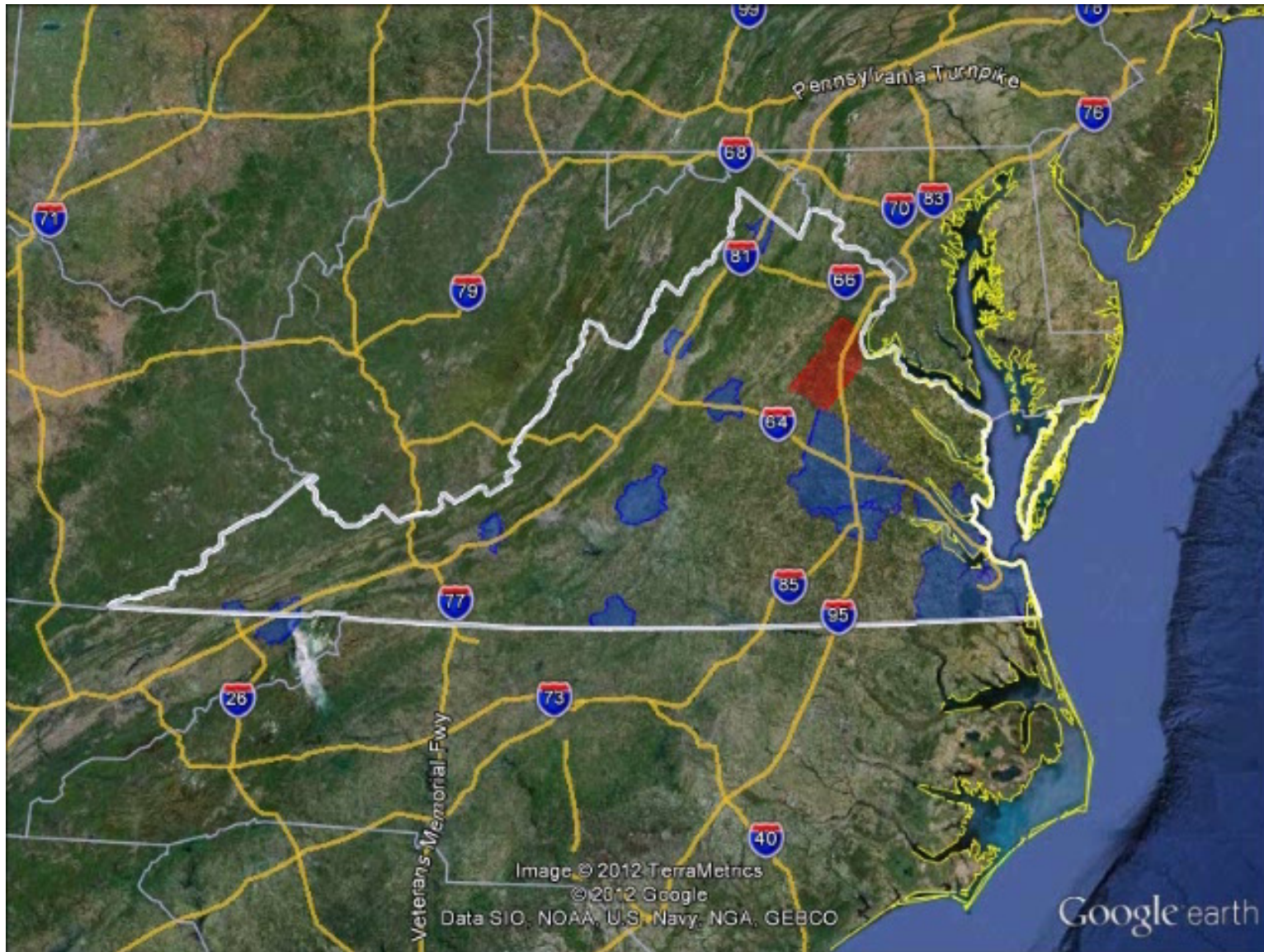
## Berry Hill Road (VA 863)



Prepared By West Piedmont PDC, August 2012, DWR.



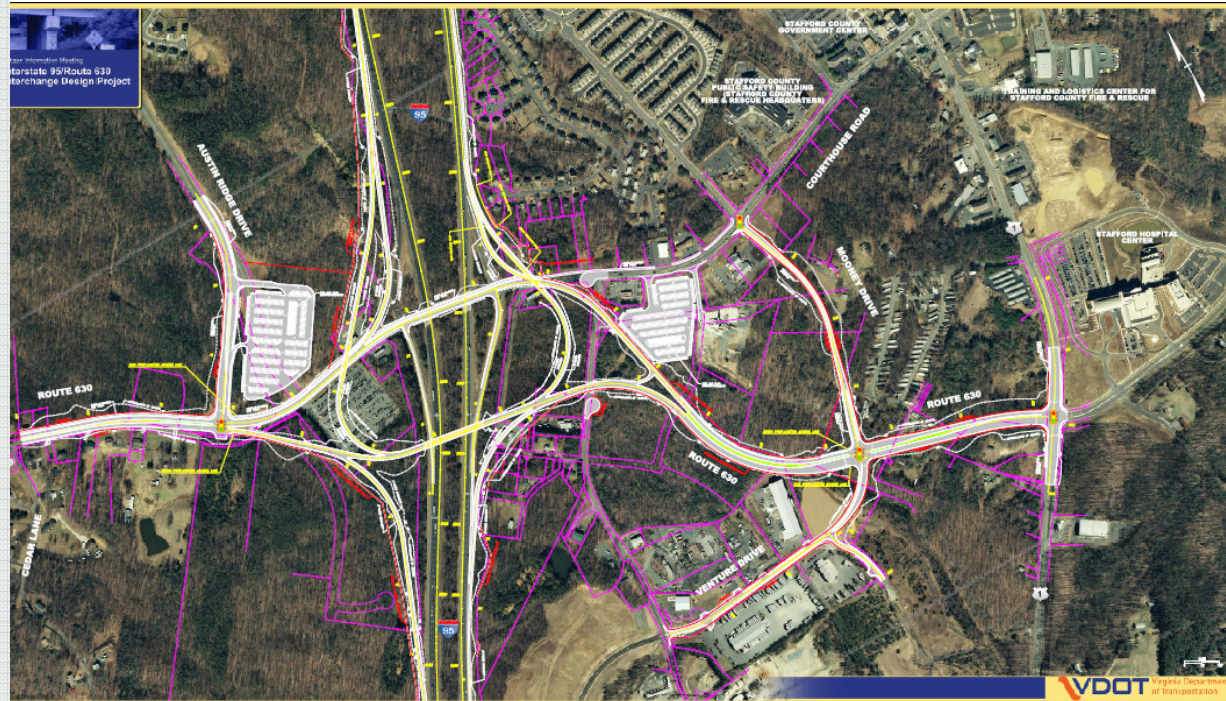
# FREDERICKSBURG



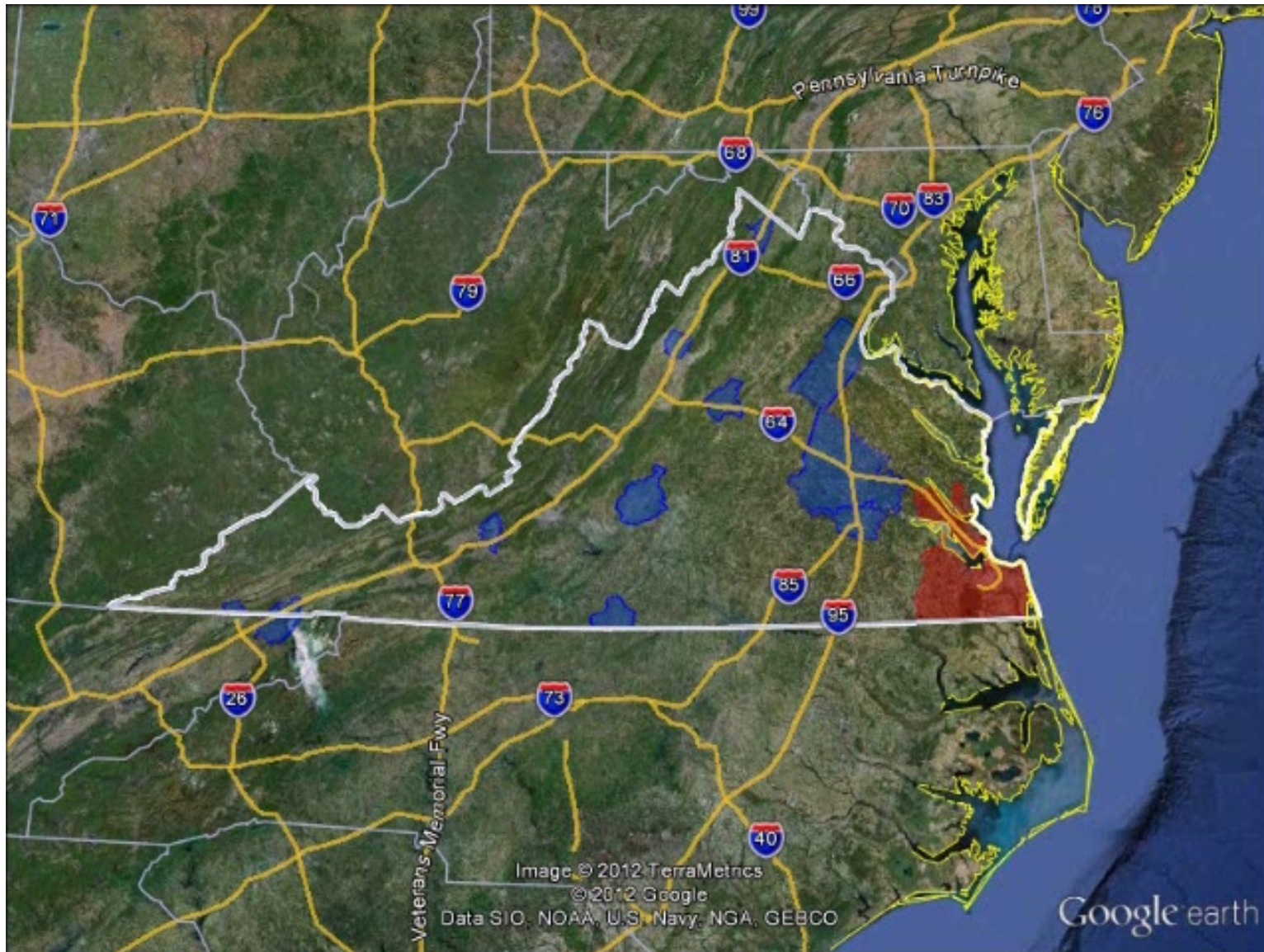
# FREDERICKSBURG

## I-95 Interchange Reconstruction (Exit 140 – Courthouse Road/Route 630)

- Highest priority road project
- Design work currently underway
- Full reconstruction of the interchange, to a modified split diamond
- No construction funding or construction schedule at this time
- Total estimate project cost: \$168.2 million
- Current funding gap to complete project: \$143.4 million



# HAMPTON ROADS



# HAMPTON ROADS

- Currently under study with VDOT
- Included in the 2034 Long-Range Transportation Plan as a top priority

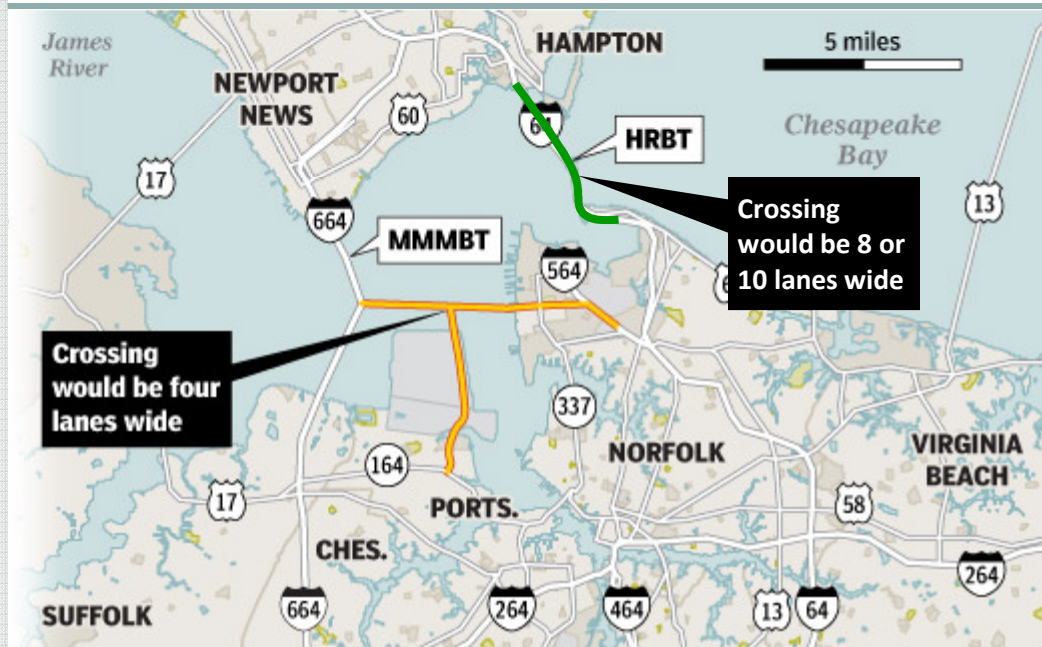
## Hampton Roads Bridge-Tunnel

- Expanding from four lanes to either eight or 10 lanes

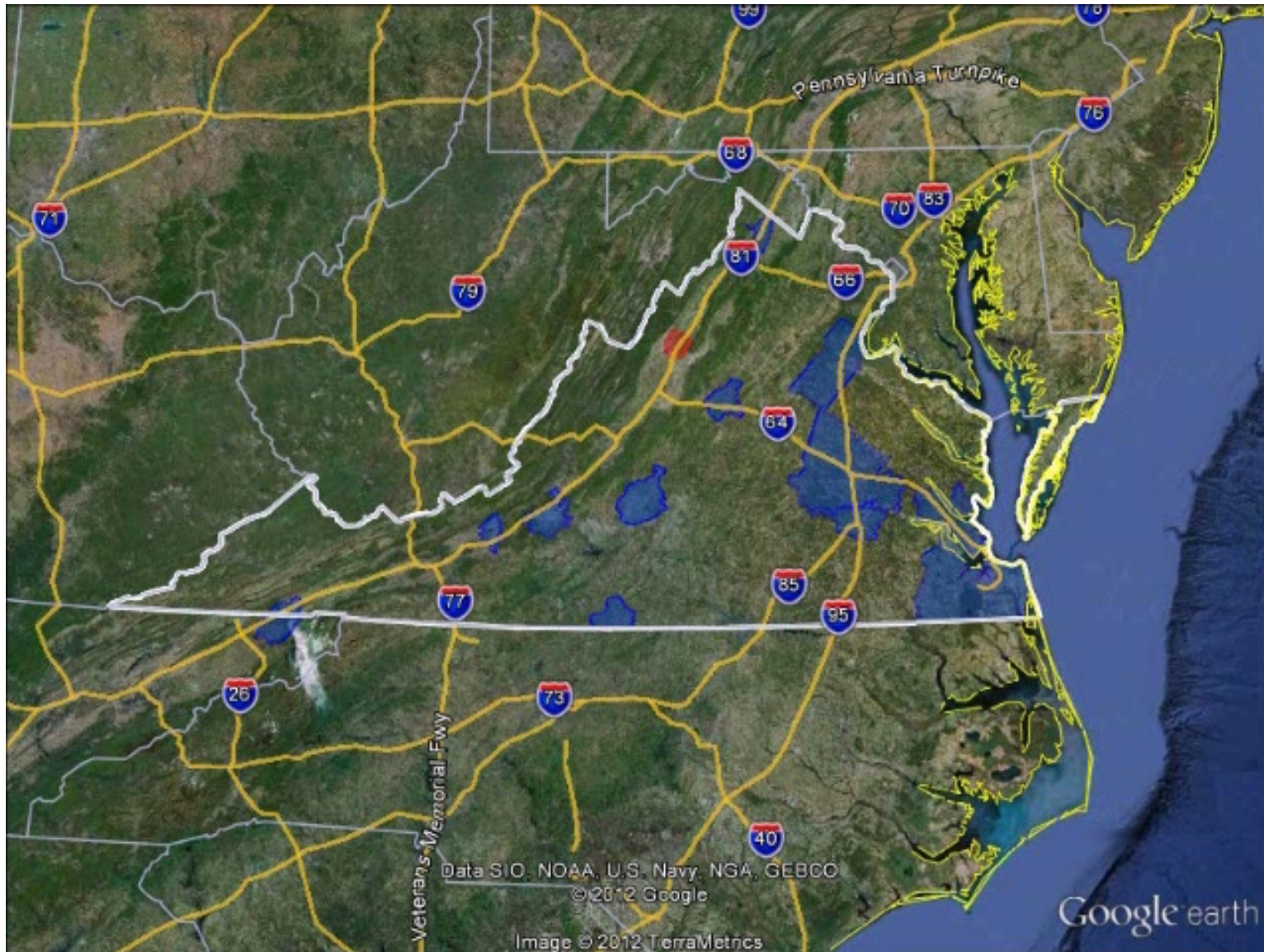
## Patriots' Crossing

- Bridge-tunnel that connects Norfolk from around the Port and Norfolk Naval Station with the Monitor-Merrimac Memorial Bridge-Tunnel

## Hampton Roads Crossings (Patriots Crossing and Hampton Roads Bridge-Tunnel)



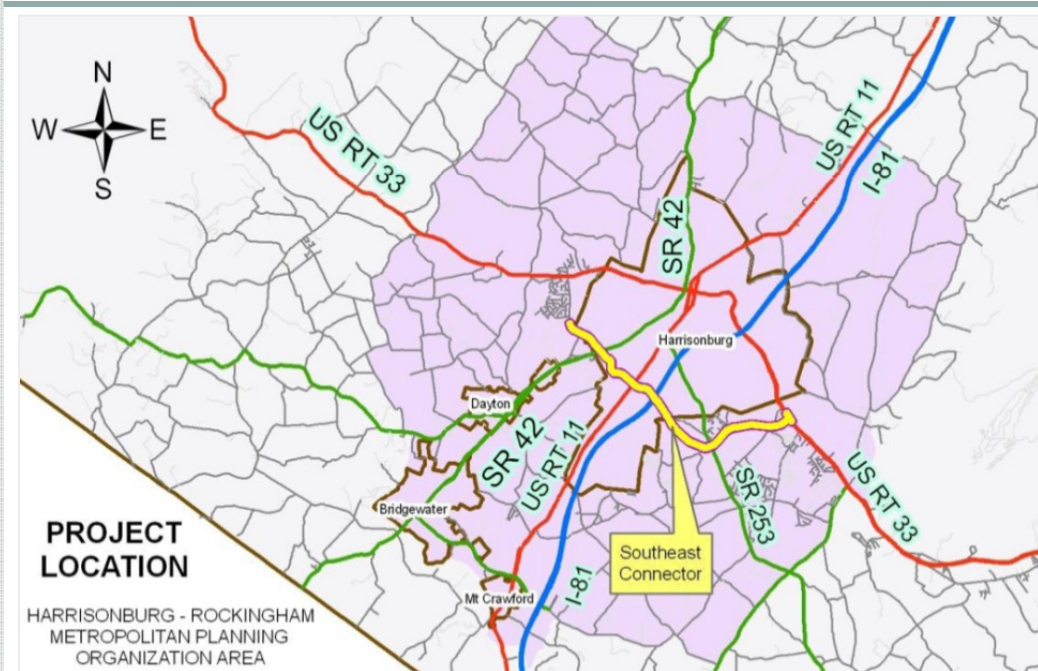
# HARRISONBURG-ROCKINGHAM



# HARRISONBURG-ROCKINGHAM

- Number one priority
- Included in the City of Harrisonburg's 2004 Comprehensive Plan, HRMPO 2035 Transportation Plan, and current STIP and SYIP
- Four lane facility with curb and gutter and multimodal accommodations
- Designed to improve east west mobility in Harrisonburg with substantial traffic capacity and safety improvements
- Facilitates access to Harrisonburg High School, Stone Spring Elementary School, Berea Christian School, City recreation facilities & the new Rockingham Memorial Hospital

## Erickson Avenue (Stone Spring Road Southeast Connector)



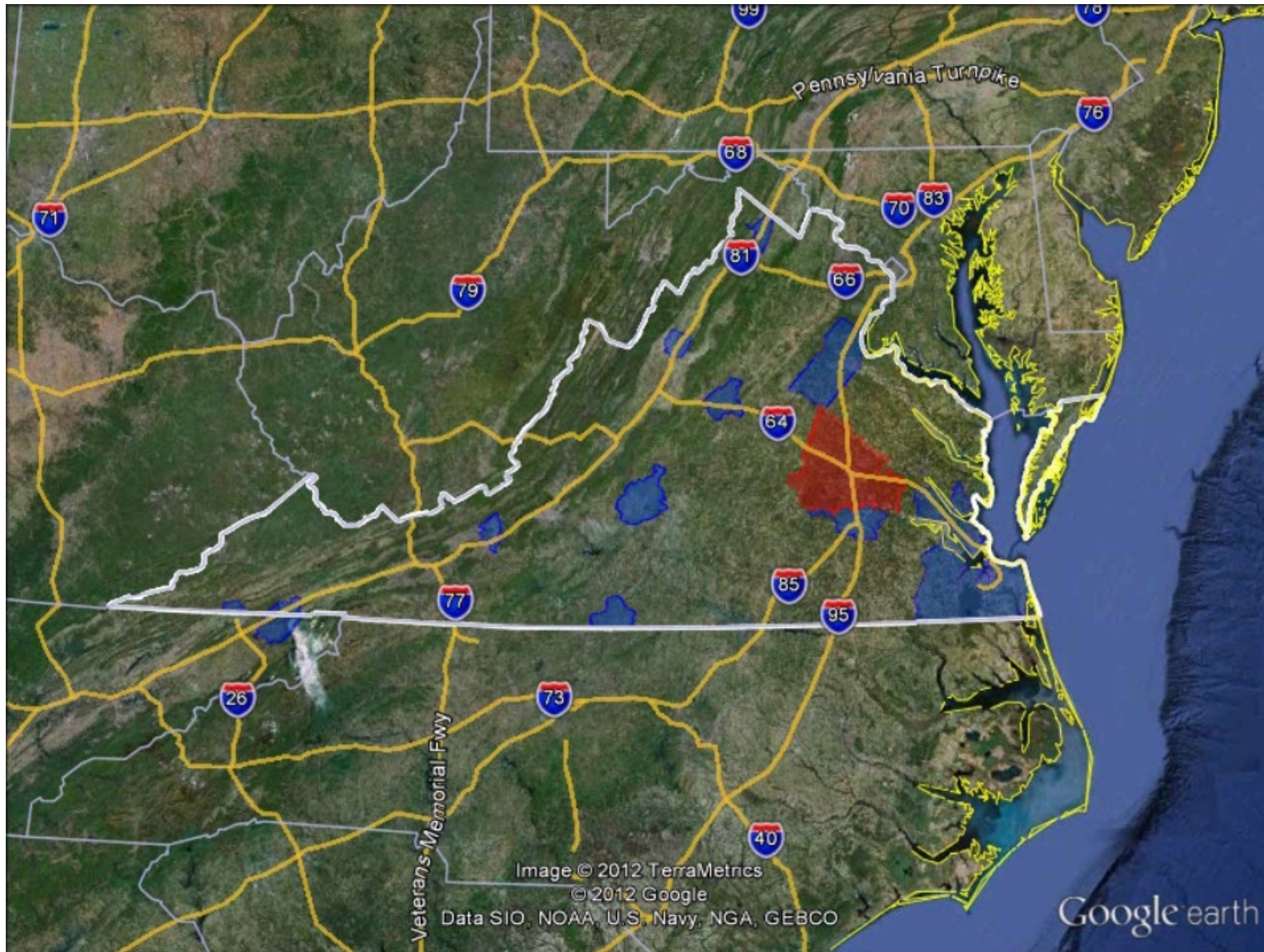
### Schedule

Phase I completed in November 2010  
Phase II under construction with an April 2013 estimated completion date  
Phase III began in March 2012





# RICHMOND



# RICHMOND

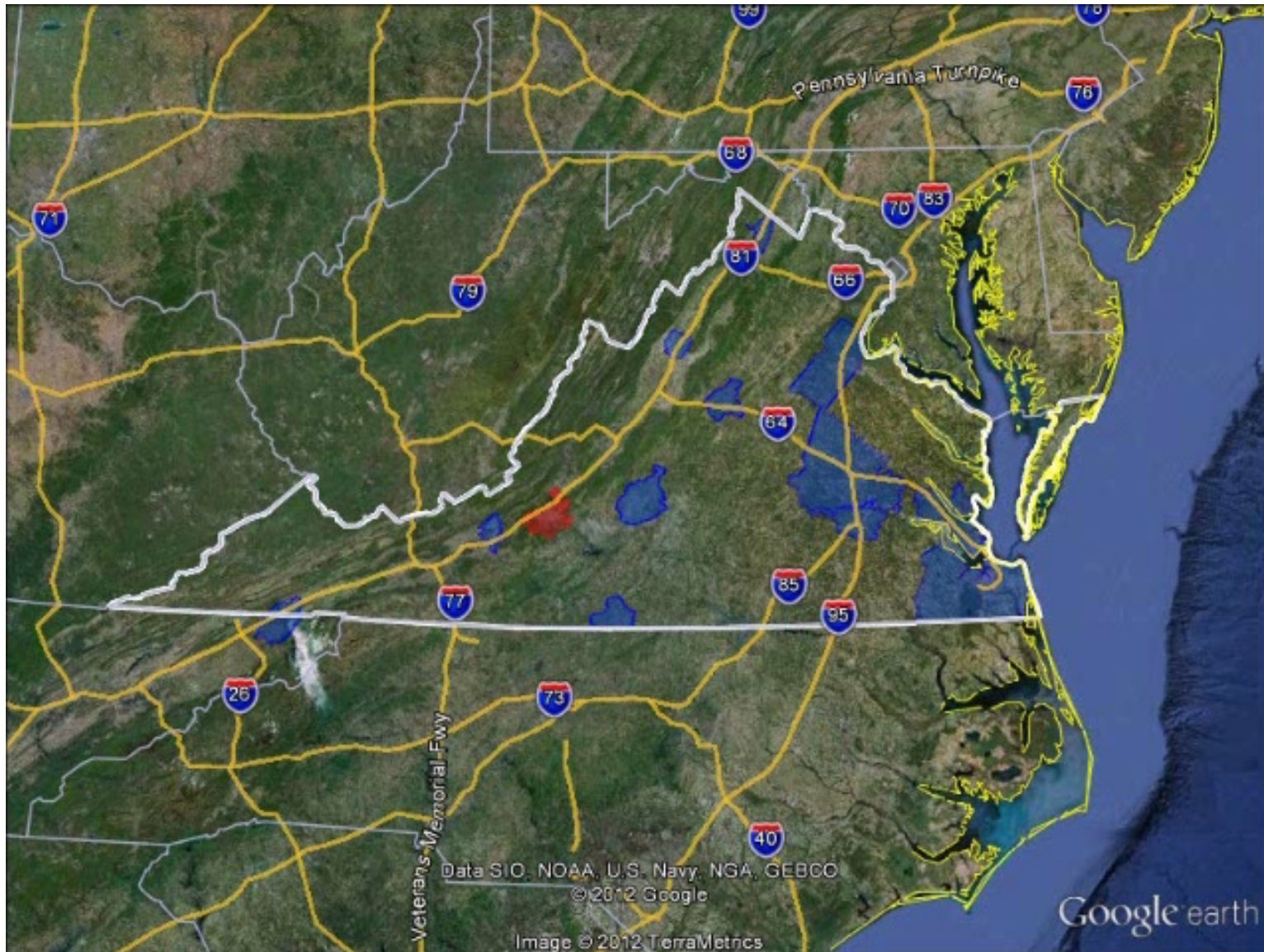


## Port of Richmond

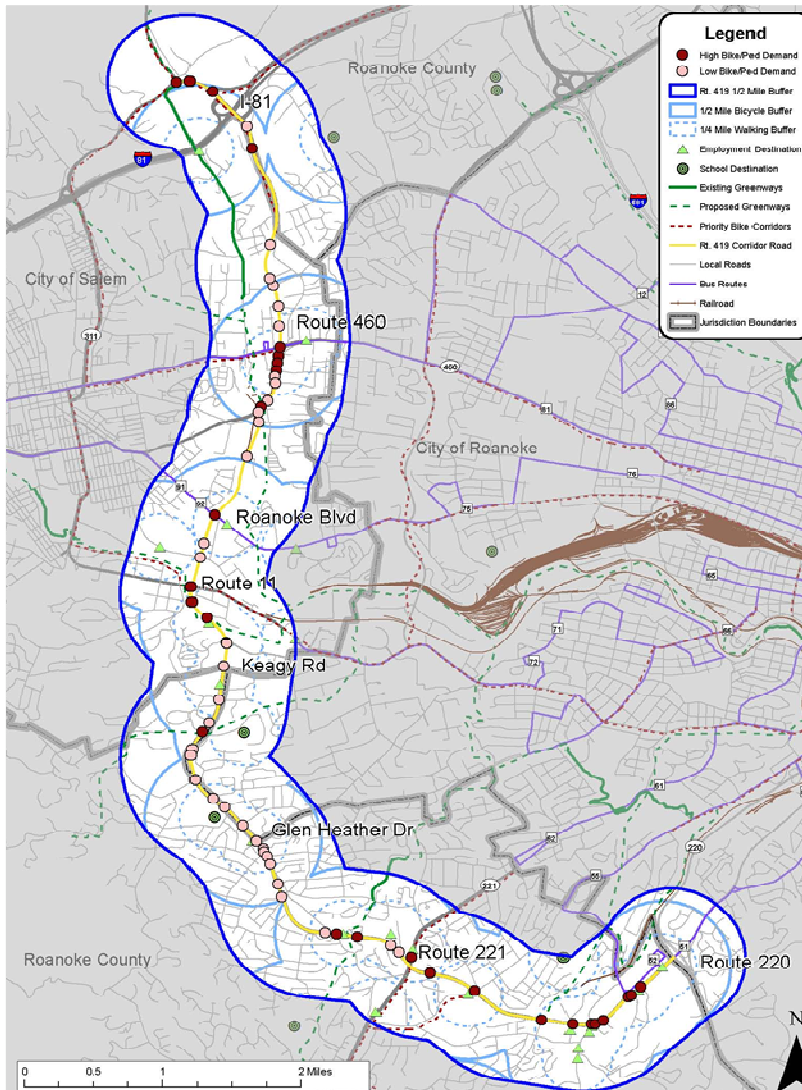
Improvements within the Port of Richmond Opportunity Zone



# ROANOKE VALLEY AREA



# ROANOKE VALLEY AREA



## Route 419 – Electric Road

### Without Improvements

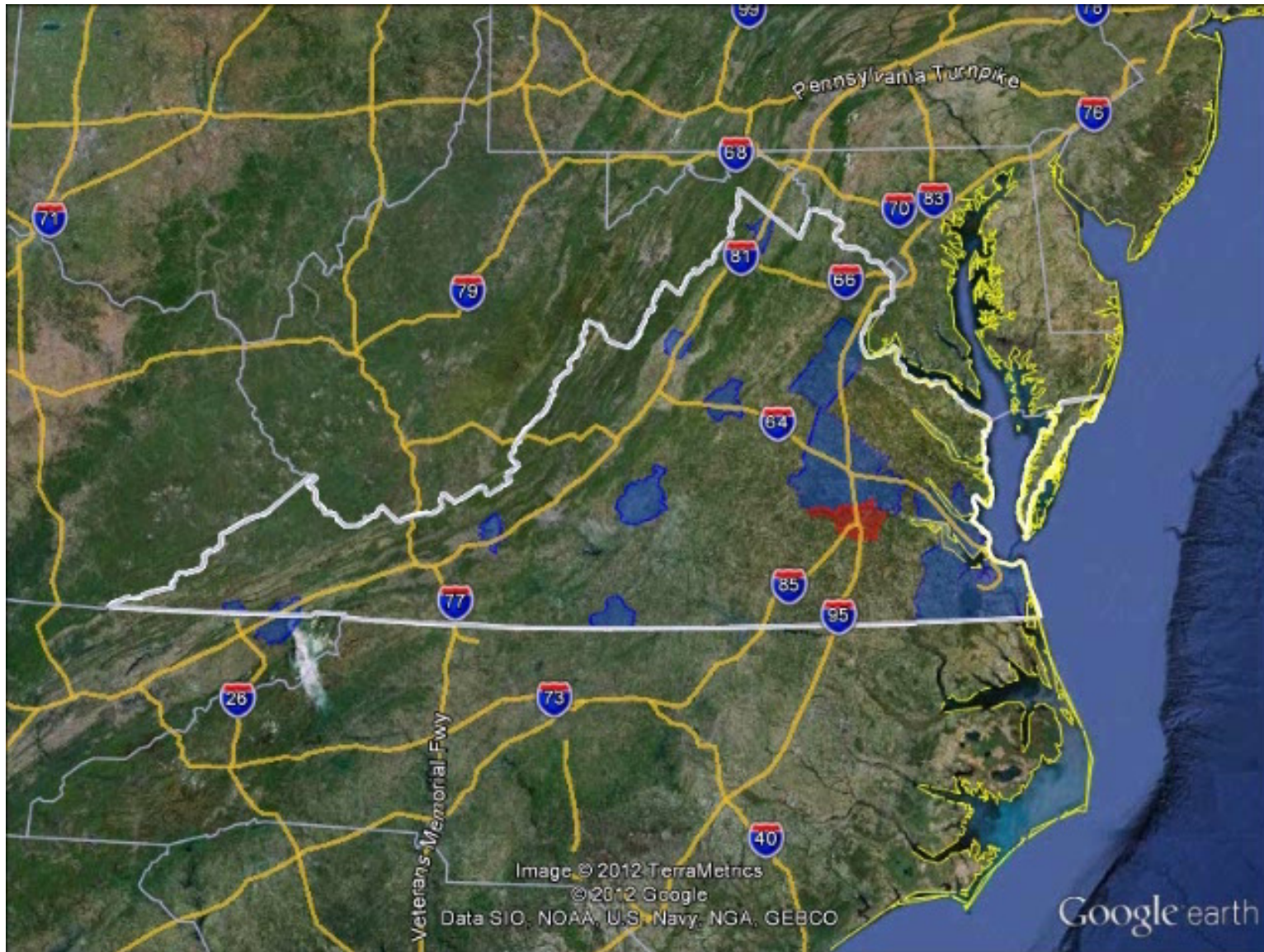
- 2018 - 50% of signalized intersections will operate at LOS E or F
- 2035 - 75% of signalized intersections will operate at LOS E or F

### Challenge

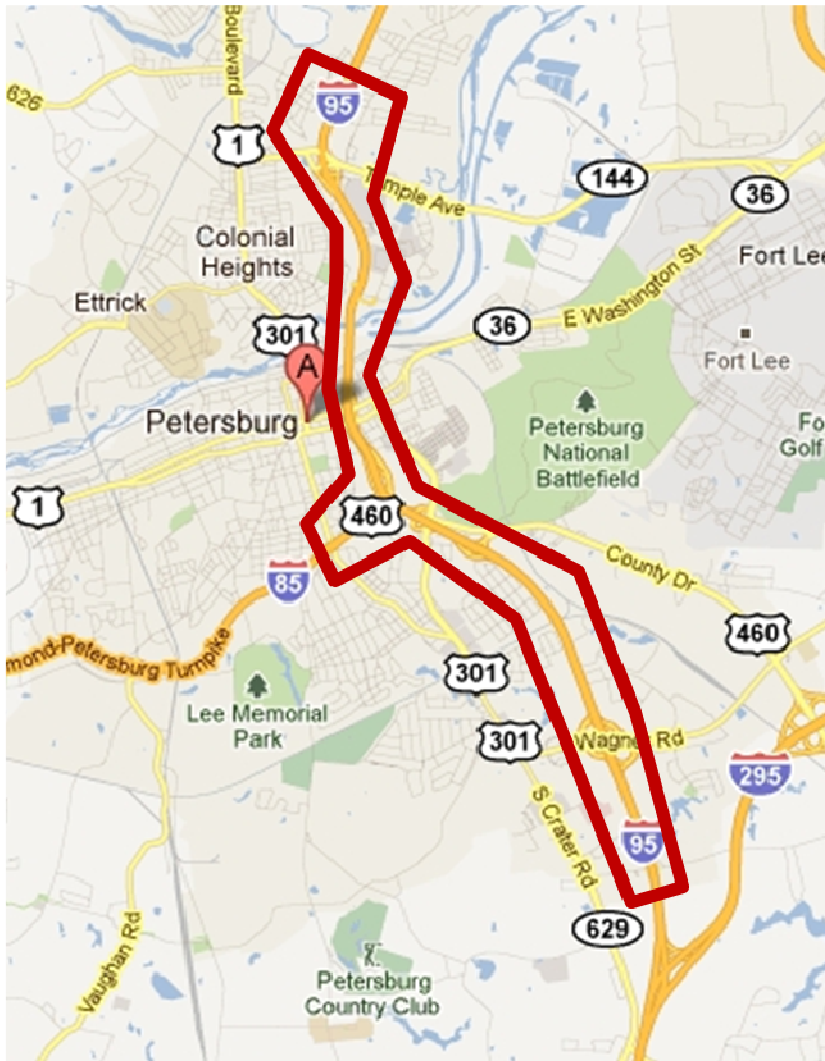
- Transform a 9.5-mile, 4-lane divided highway into a safe, efficient multimodal corridor



# TRI-CITIES



# TRI-CITIES



## I-95/85 Interchange Area RSA

- Originally constructed as part of the Richmond-Petersburg Turnpike in 1958
- VDOT – Richmond District is conducting a Roadside Safety Assessment of the I-95/I-85 interchange
- Developing short-term and long-term improvement recommendations
- Currently serves approximately 99,000 vehicles daily

