



STAUNTON-AUGUSTA-WAYNESBORO METROPOLITAN PLANNING ORGANIZATION

112 MACTANLY PLACE

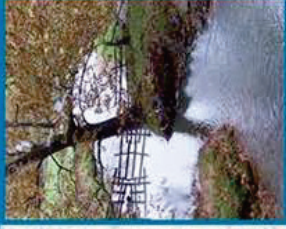
STAUNTON, VIRGINIA 24401

PHONE (540) 885-5174 • FAX (540) 885-2687

CITY OF STAUNTON • COUNTY OF AUGUSTA • CITY OF WAYNESBORO



SAWMPO ECONOMY



- Augusta County is 2nd largest agricultural producer in the Virginia

- Major Employers in the Region

- Augusta Health
- Target
- McKee Foods Corp.
- Hershey Chocolate
- Western State Hospital
- Cadence Inc.
- Mary Baldwin College
- INVISTA
- Ply Gem

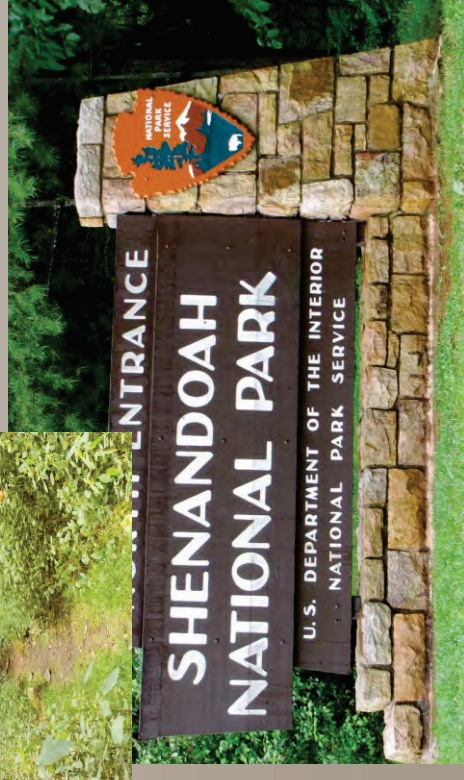
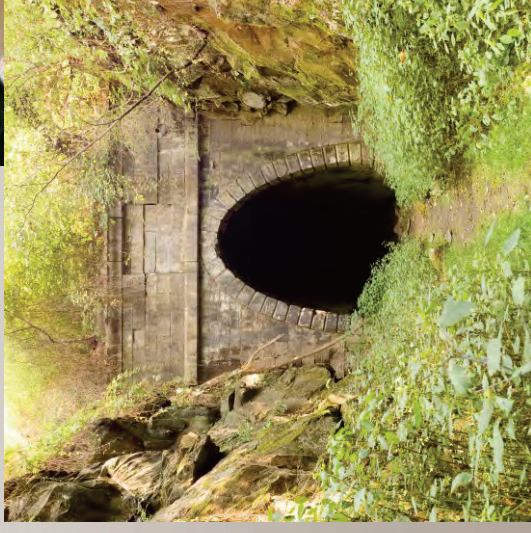




SAWMPO ECONOMY

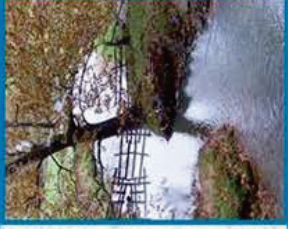


- Tourism
 - Shenandoah National Park
 - Blue Ridge Parkway/Skyline Drive
 - American Shakespeare Center (Blackfriars Playhouse)
 - Museum of American Frontier Culture
 - Appalachian Trail
 - George Washington National Forest
 - Woodrow Wilson Presidential Library
 - Agri-tourism
 - Crozet Tunnel
 - Staunton Historic District



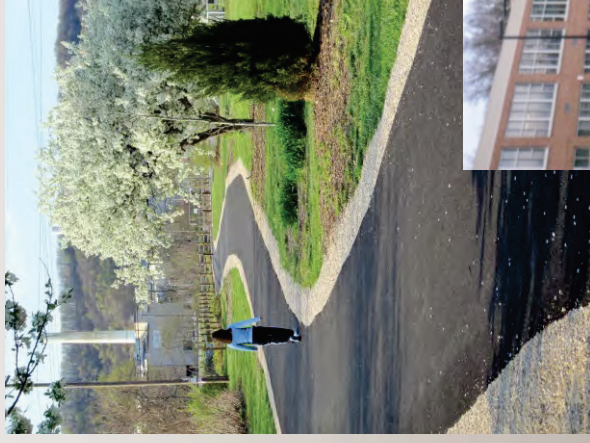


SAWMPO TRANSPORTATION NETWORK



Bicycle and Pedestrian Network:

- South River Greenway
- US Bike Route 76 (aka the Transamerica Route)
- Well Developed Sidewalk Network
- Appalachian Trail



Safe Routes to School:

- McSwain Elementary (Staunton)
- Shelburn Middle/Ware Elementary (Staunton)
- Berkeley Glenn Elementary (Waynesboro)
- Westwood Hills Elementary (Waynesboro)
- William Perry Elementary (Waynesboro)
- Wenonah Elementary (Waynesboro)
- Kate Collins Middle (Waynesboro)



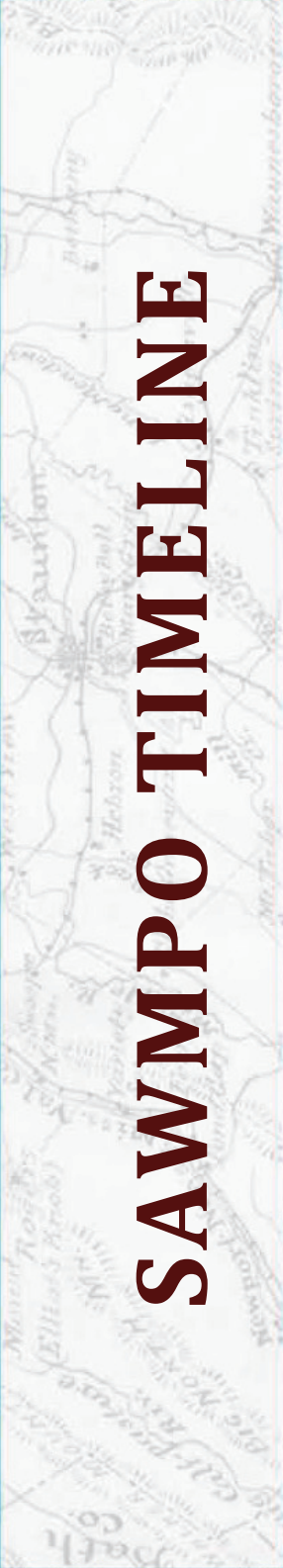
Transportation Enhancements:

- Augusta Farms Road (Augusta)
- South River Greenway Phase I (Waynesboro)





SAWMPPO TIMELINE



March 27, 2012

- Census designation of New Urbanized Areas

August 13, 2012

- First Organizational Meeting

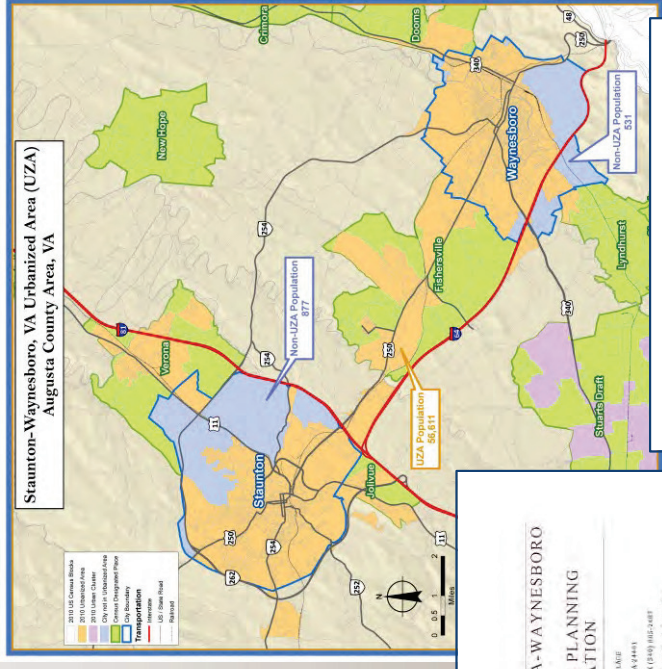
November 7, 2012

- Memorandum of Understanding

- Bylaws

- Approval of the Metropolitan Planning Area

- Public Participation Plan



STAUNTON-AUGUSTA-WAYNESBORO METROPOLITAN PLANNING ORGANIZATION

112 METTANTHAGE
 STAUNTON, VIRGINIA 24404
 PHONE (540) 882-3174 • FAX (540) 882-3487
 City of Staunton • County of Augusta • City of Waynesboro

MEMORANDUM OF UNDERSTANDING

Organizing, Cooperative, and Comprehensive Metropolitan Planning Process for the Cities of Staunton and Waynesboro and the County of Augusta Urbanized Area

This AGREEMENT, made and entered into as of the 7th day of November, 2012, by and between the Commonwealth of Virginia - Secretary of Transportation, hereinafter referred to as the "STATE"; the City of STAUNTON, acting as a local unit of government, hereinafter referred to as "STAUNTON"; the County of AUGUSTA, acting as a local unit of government, hereinafter referred to as the "AUGUSTA"; and the City of WAYNESBORO, acting as a local unit of government, hereinafter referred to as "WAYNESBORO"; establishes the STAUNTON-AUGUSTA-WAYNESBORO Metropolitan Planning Organization, and identifies the roles and responsibilities in order to carry out a Continuing, Cooperative, and Comprehensive Multimodal Transportation Planning and Programming Process in the Staunton-Augusta-Waynesboro Urbanized Area of Virginia.

The STATE, STAUNTON, AUGUSTA, and WAYNESBORO shall participate in a Continuing, Cooperative, and Comprehensive metropolitan transportation planning and

Page 1

STAUNTON-AUGUSTA-WAYNESBORO METROPOLITAN PLANNING ORGANIZATION

112 METTANTHAGE
 STAUNTON, VIRGINIA 24404
 PHONE (540) 882-3174 • FAX (540) 882-3487
 City of Staunton • County of Augusta • City of Waynesboro

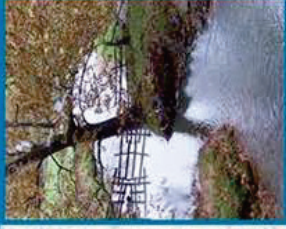
POLICY BOARD BYLAWS

ADOPTED ON NOVEMBER 7, 2012

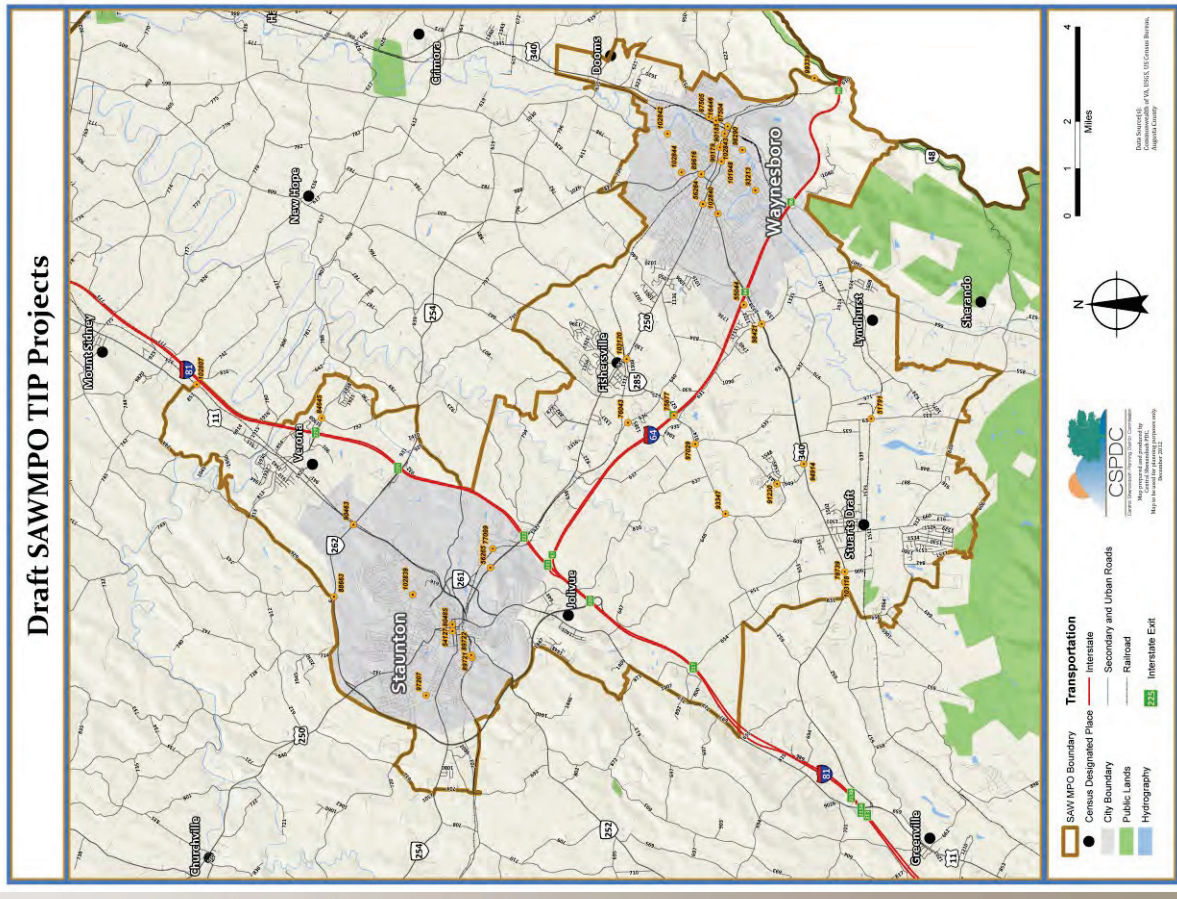
89/08



SAWMPO NEXT STEPS



- Initial Transportation Improvement Program
 - 29 highway projects funded
 - I-64 Exit 91
 - Route 340 improvements
- Title VI Plan
- Website
- Long Range Transportation Plan

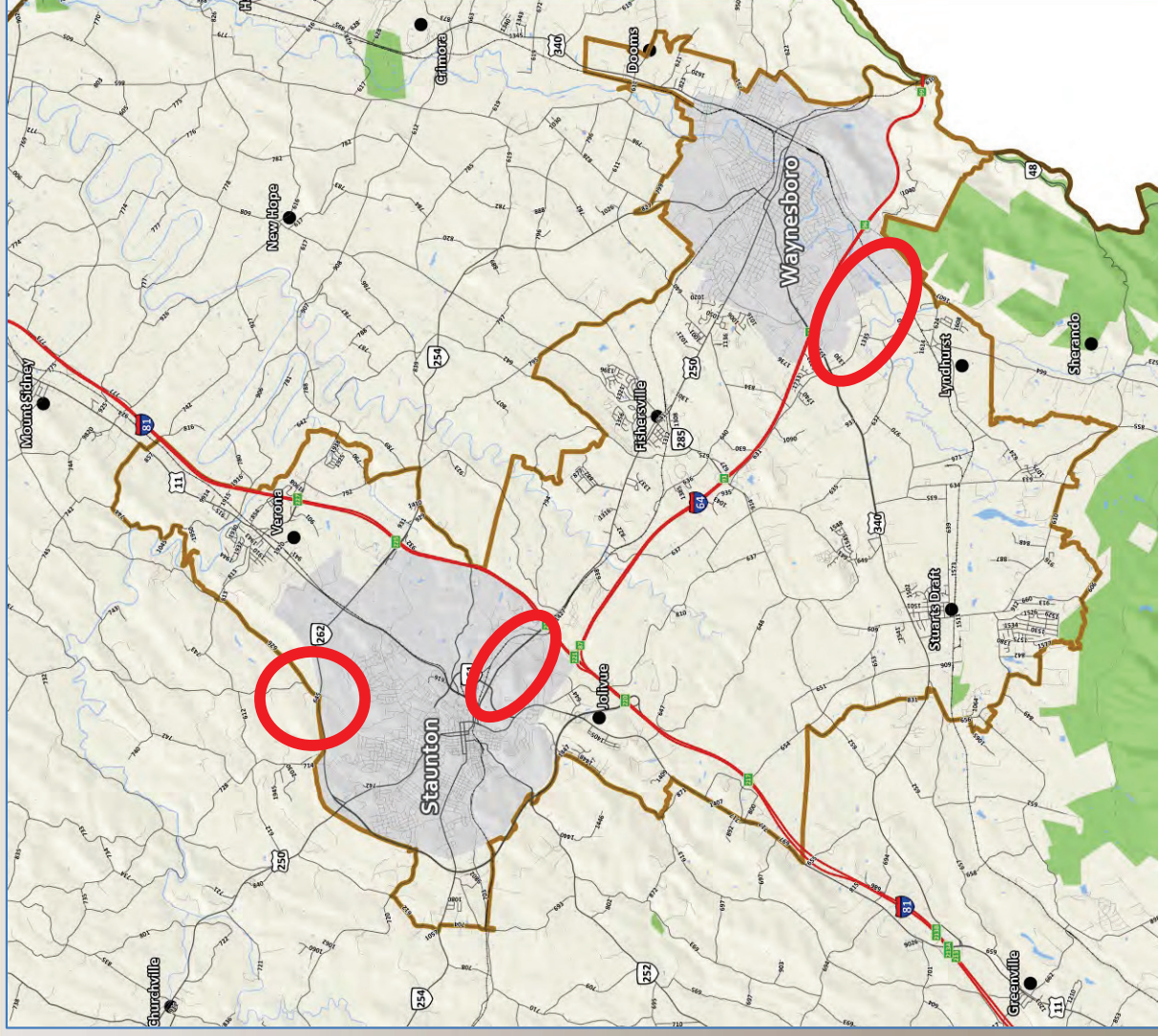




SAWMPO PRIORITY PROJECTS

3 Priority Projects have been initially identified:

- Richmond Road Corridor Phase I and Frontier Drive Improvements
- Waynesboro Southern Connector
- Route 262 (Woodrow Wilson Parkway) at Route 613 (Spring Hill Road) Interchange Improvement

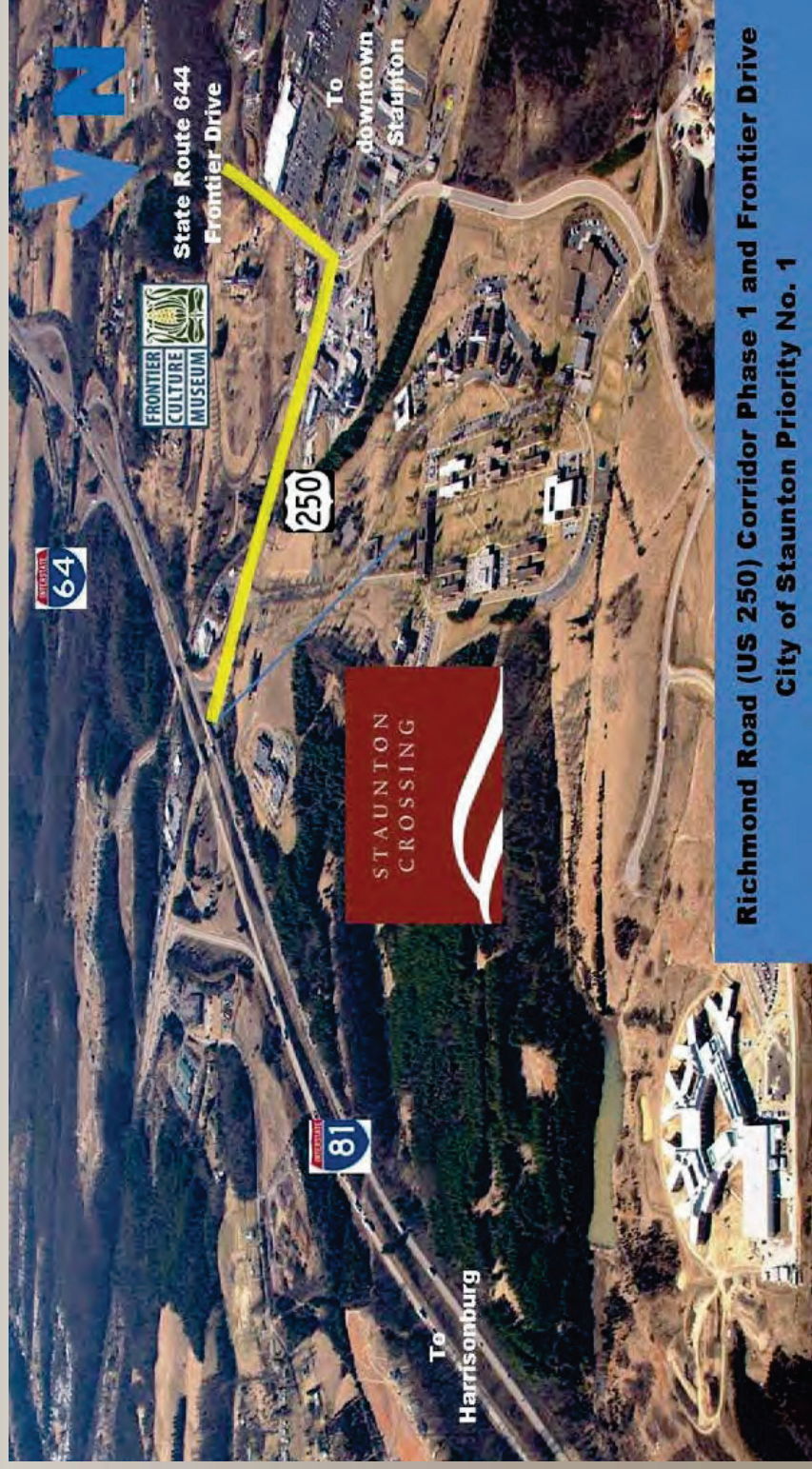




SAWMPO PRIORITY PROJECTS

Richmond Road Corridor Phase I & Frontier Drive Improvements ~ \$9.2 Million

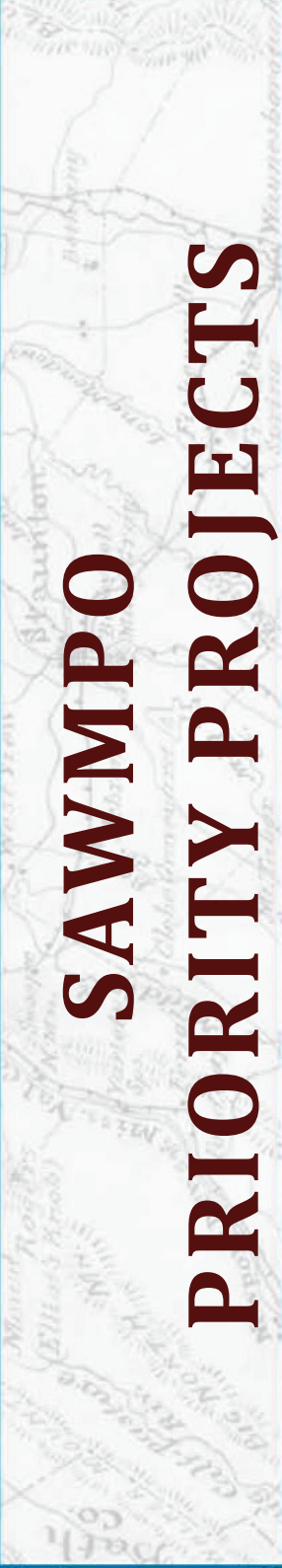
Various improvements to the corridor including: landscape and sign enhancements between I-81 and Frontier Drive; intersection improvements at the Museum of American Frontier Culture and Frontier Drive intersections; widening and turning improvements on Frontier Drive south of Richmond Road including secondary access to the Museum of American Frontier Culture.



Richmond Road (US 250) Corridor Phase 1 and Frontier Drive
City of Staunton Priority No. 1

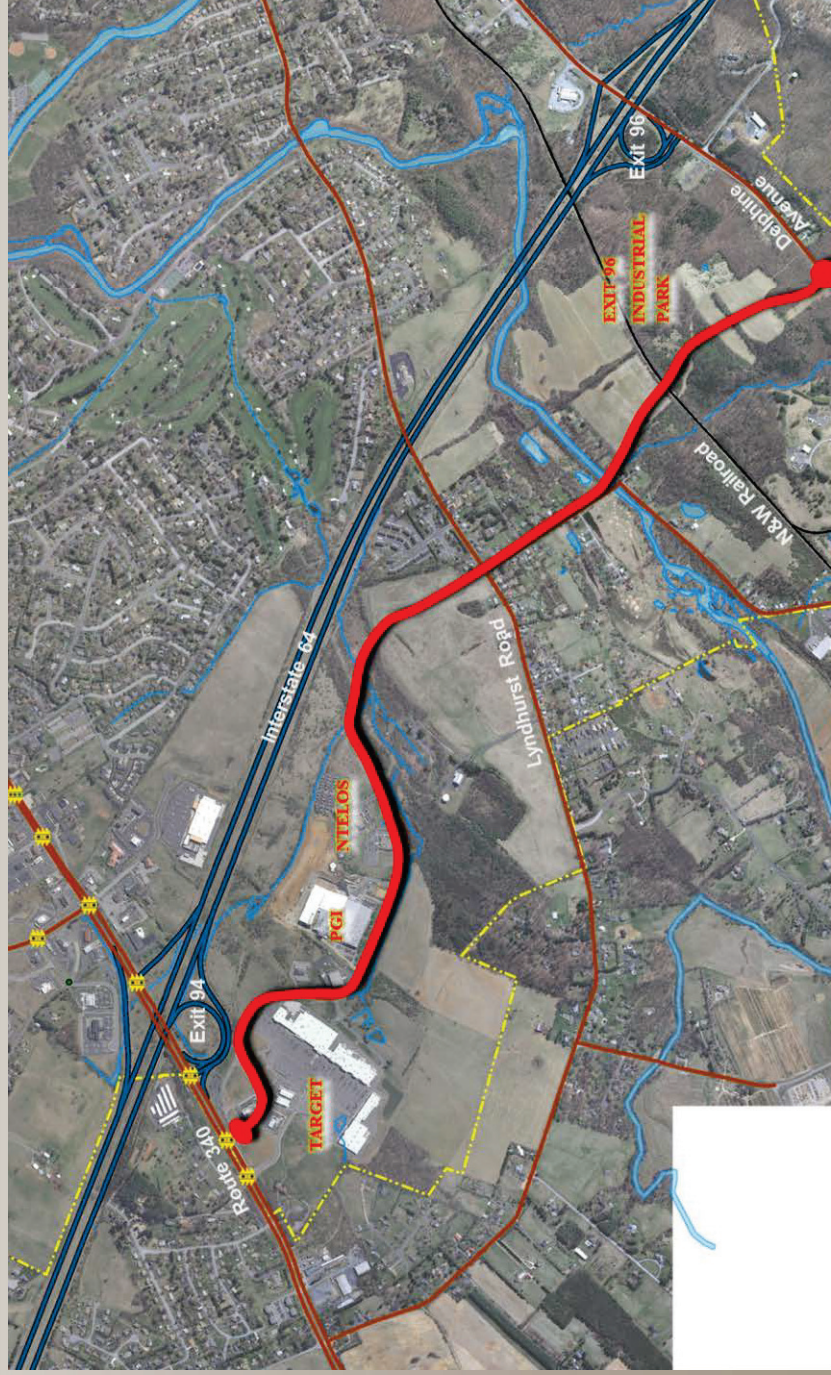


SAWMPO PRIORITY PROJECTS



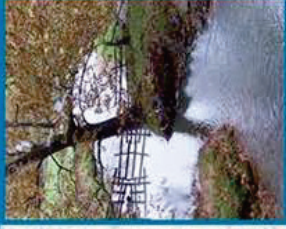
Waynesboro Southern Connector ~ \$4.8 million

A 1.6 mile construction/ reconstruction of a 2-lane limited access road linking Route 340 (Exit 94) to Delphine Avenue (Exit 96). The facility will provide road and rail access to several key industrial and commercial properties.



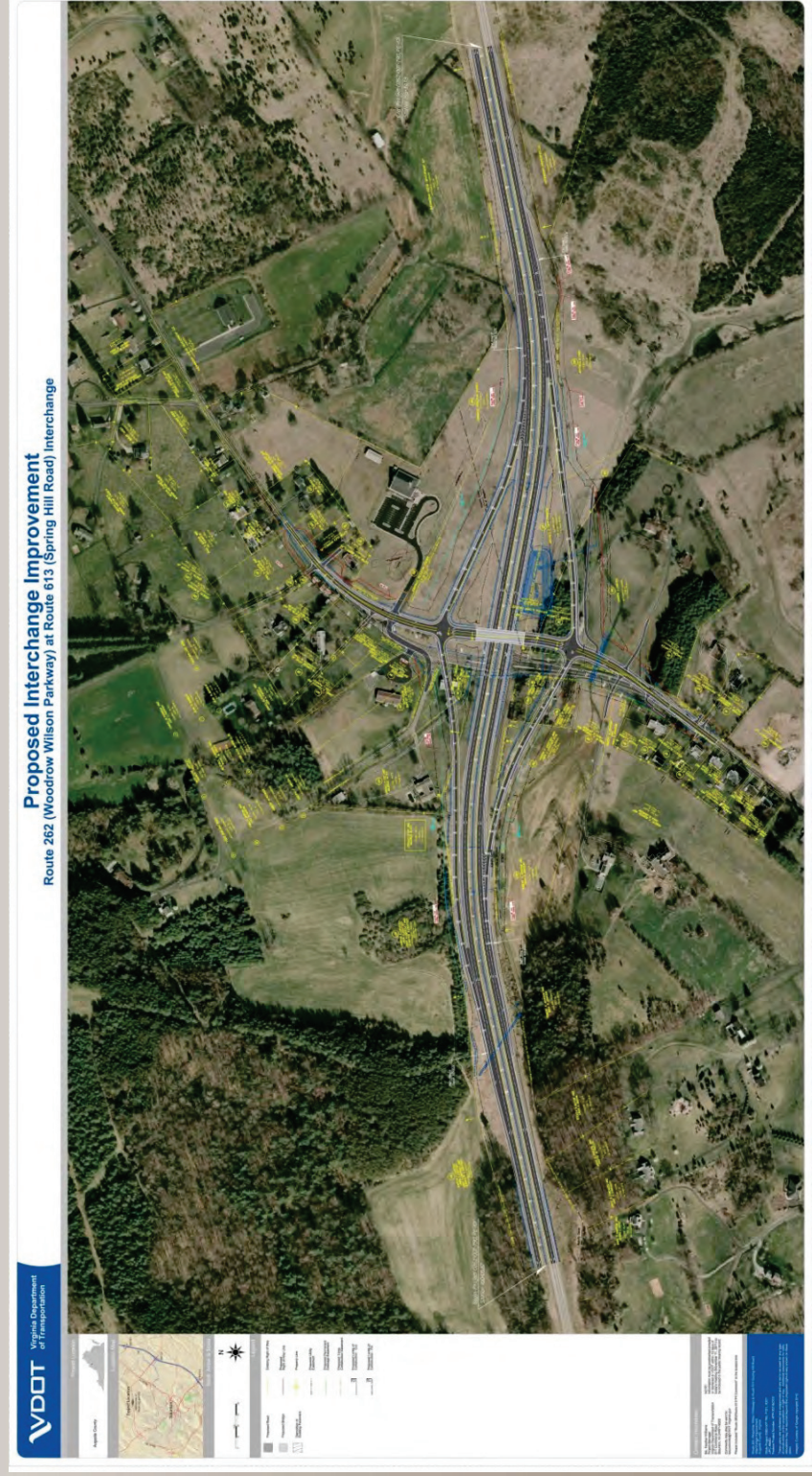


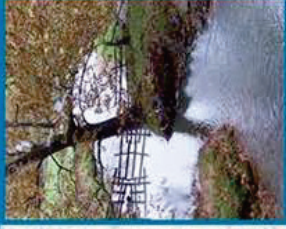
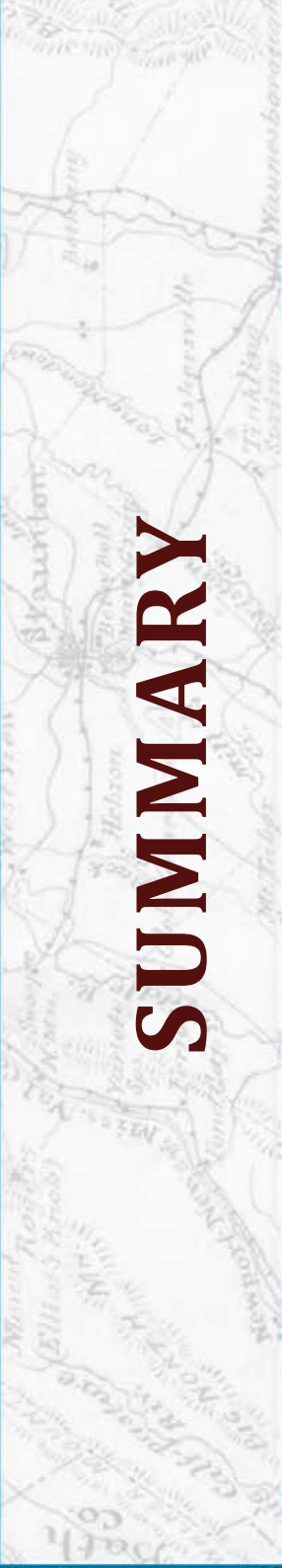
SAWMPO PRIORITY PROJECTS



Route 262/613 Interchange Improvement ~ \$22 Million

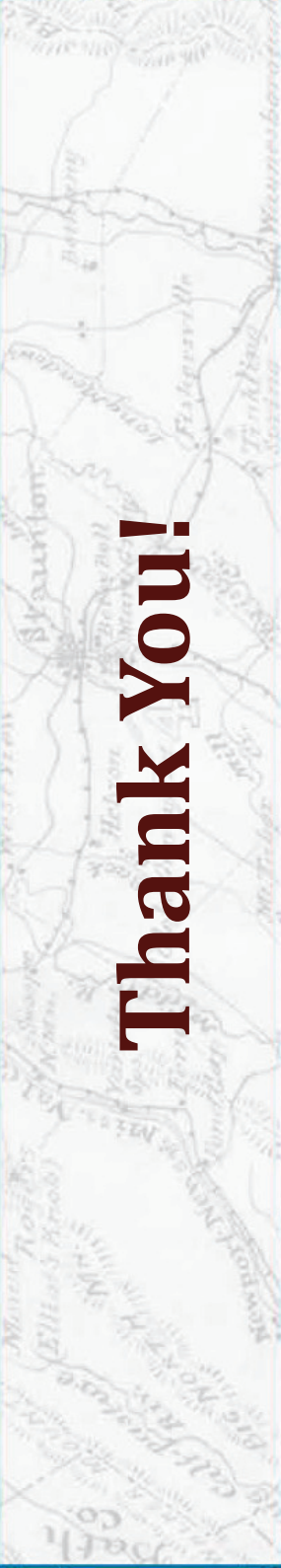
Intended to improve safety because it is the location of numerous crashes. Project would replace the current at grade intersection with a diamond interchange. PE and Right-of-Way are funded but still waiting on construction funding.





- Staunton, Augusta, and Waynesboro have a strong history of regional cooperation.
- We are the newest MPO in the state.
- The SAWMPO appreciates the assistance that the CTB has provided to the region in the past.
- We are currently working to develop our first Long Range Transportation Plan
- The SAWMPO requests CTB support for the following priority projects:

Richmond Road Corridor Phase 1 and Frontier Drive Improvements	\$9,200,000
Waynesboro Southern Connector	\$4,800,000
Route 262 at Route 613 Interchange Improvement	\$22,000,000
Total:	\$36,000,000



Thank You!

Questions?

STAUNTON-AUGUSTA-WAYNESBORO METROPOLITAN PLANNING ORGANIZATION

112 MACTANLY PLACE

STAUNTON, VIRGINIA 24401

PHONE (540) 885-5174 • FAX (540) 885-2687

CITY OF STAUNTON • COUNTY OF AUGUSTA • CITY OF WAYNESBORO