



***HAMPTON ROADS DISTRICT
PROJECT UPDATE***

**James W. Utterback, PMP
District Administrator**



Hampton Roads

District Overview

- 9 Counties/12 Cities/2 Islands
- Approximately 825 positions
- Approximately 10,000 Total Lane Miles

Tunnels/Facilities

- I-64 Hampton Roads Bridge-Tunnel (HRBT)
- I-664 Monitor-Merrimac Memorial Bridge-Tunnel (MMMBT)
- Jamestown Scotland Ferry
- Transportation Operations Center (TOC)

Major Bridges

- James River Bridge
- High Rise Bridge
- Berkley Bridge
- Coleman Bridge
- Chincoteague Bridge

Residencies







- Accomac
- Franklin
- Williamsburg

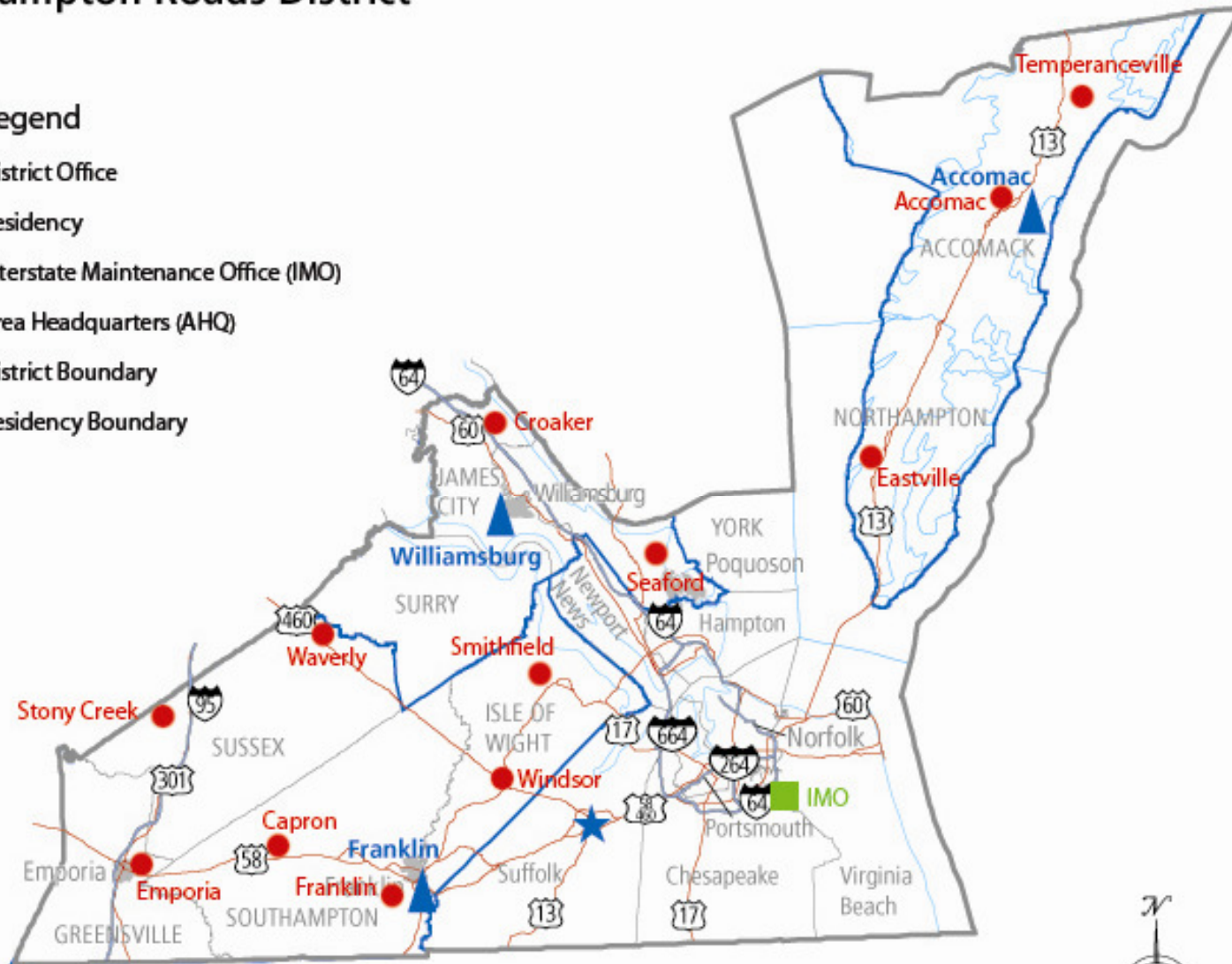
Interstate Management Office (IMO)

- TAMS Contract
- Urban Construction



VDOT District Office and Residencies Hampton Roads District

- Legend**
-  District Office
 -  Residency
 -  Interstate Maintenance Office (IMO)
 -  Area Headquarters (AHQ)
 -  District Boundary
 -  Residency Boundary





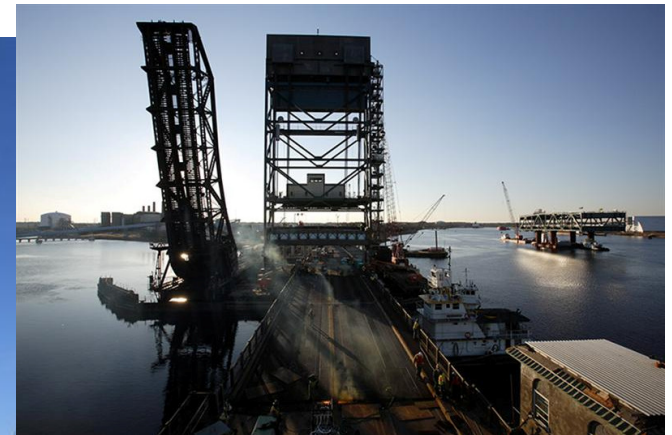
Interstate D-B Pavement Rehabilitation

Route	Project Description	Est. Cost	Projected Ad
I-64 & I-264	Pavement Rehabilitation Design Build (DB) - Norfolk <i>asphalt overlay of concrete pavements; 48 lane miles on I-64 and 19 lane miles on I-264</i>	\$50 M	July 2013
I-64	Pavement Rehabilitation Design Build (DB) - Norfolk <i>asphalt overlay of 19 lane miles of concrete pavement</i>	\$16 M	July 2013
I-264	Pavement Rehabilitation Design Build (DB) – Virginia Beach <i>asphalt overlay of 76 lane miles of concrete pavement</i>	\$54 M	July 2013
Total		\$120 M	

Transportation Projects In Construction

Gilmerton Bridge Replacement - \$134 million in City of Chesapeake

- Replace 70 year old movable bridge
- Increase navigable clearance for Intercoastal Waterway
- Completion early 2014



Transportation Projects In Construction

Dominion Boulevard Widening - \$345 million in City of Chesapeake

- First Virginia Infrastructure Improvement Bank (VTIB) project
- Local Administration with VDOT support
- Completion mid-2014



Transportation Projects In Construction

Middle Ground Boulevard - \$38 million in City of Newport News

- Expedited design-build contract
- Provides critical north-south connection to growing City Center
- Completion late 2014



Transportation Projects In Construction

Princess Anne Road - \$28 million in City of Virginia Beach

- Widen the existing highway to a four-lane roadway
- Construct short section of Nimmo Parkway, providing a connector between Princess Anne Road and Holland Road
- Completion Summer 2014



Transportation Projects In Construction

George Washington Memorial Highway (U.S. 17) - \$25.2 million in York County

- Increases the capacity from 4 to 6 lanes
- Includes a shared-use path parallel to the northbound lane
- Replaces two bridges over the Poquoson River with one 6 lane bridge
- Completion Winter 2016



Transportation Projects in Design



I-64 High Rise Bridge Widening Study

- \$5 million in City of Chesapeake

- Expedited environmental documentation study
- Widens from I-464 to I-664

I-64 Peninsula Widening Design-Build - \$100 million in City of Newport News, James City County, and City of Williamsburg

- 5 miles of interstate expansion to 6-lanes
- Fort Eustis (Exit 250) to Jefferson Avenue (Exit 255)



Transportation Projects in Design

I-564 Intermodal Connector Design-Build - \$157 million in City of Norfolk

- **Interstate connection to Navy and Virginia Port Piers**
- **Halfway point in Navy Triangle Improvement Plan supporting Patriot's Crossing**



Lesner Bridge Replacement - \$84 million in City of Virginia Beach

- **Replacement of deteriorating NHS bridge w/signature structure**
- **Local Administration with VDOT support**

Transportation Projects in Design



Route 35 Bridge Replacement Design-Build – \$12 million in Courtland

- Replaces Nottoway River Bridge
- 12-month desired CN schedule

Route 13 Military Highway CFI Design-Build – \$59 million in City of Norfolk

- Combines three projects
- Widens to 6- and 8- lanes
- Completes widening of Route 13 to I-64



PPTA: Downtown/Midtown/MLK, Portsmouth/ Norfolk



LENGTH: 0.8 mile (Added Midtown)
1.2 miles (MLK Extension)
Martin Luther King Extension
- London Blvd to I-264

PROJECT: 2 Lanes Parallel Tube at Midtown
4 Lanes Limited Access MLK
Upgrade Existing Tunnels
Rehab of Existing Tunnels

CURRENT STATUS:
Under Construction
Construction Completion Date: April 2018

PPTA: Route 460 Corridor, Suffolk/Isle of Wight



CONSTRUCTION COST: \$1.46 billion for development, design, construction and right of way acquisitions

LENGTH: 55 miles—Route 58 Suffolk to I-295 Petersburg

PROJECT: 4 Lanes/median limited-access highway on new alignment

CURRENT STATUS:

Under Design

Construction start late 2014 /early 2015

Construction Completion: December 2017

Questions