



**State Agency Hurricane  
Evacuation Planning**

July 16, 2013



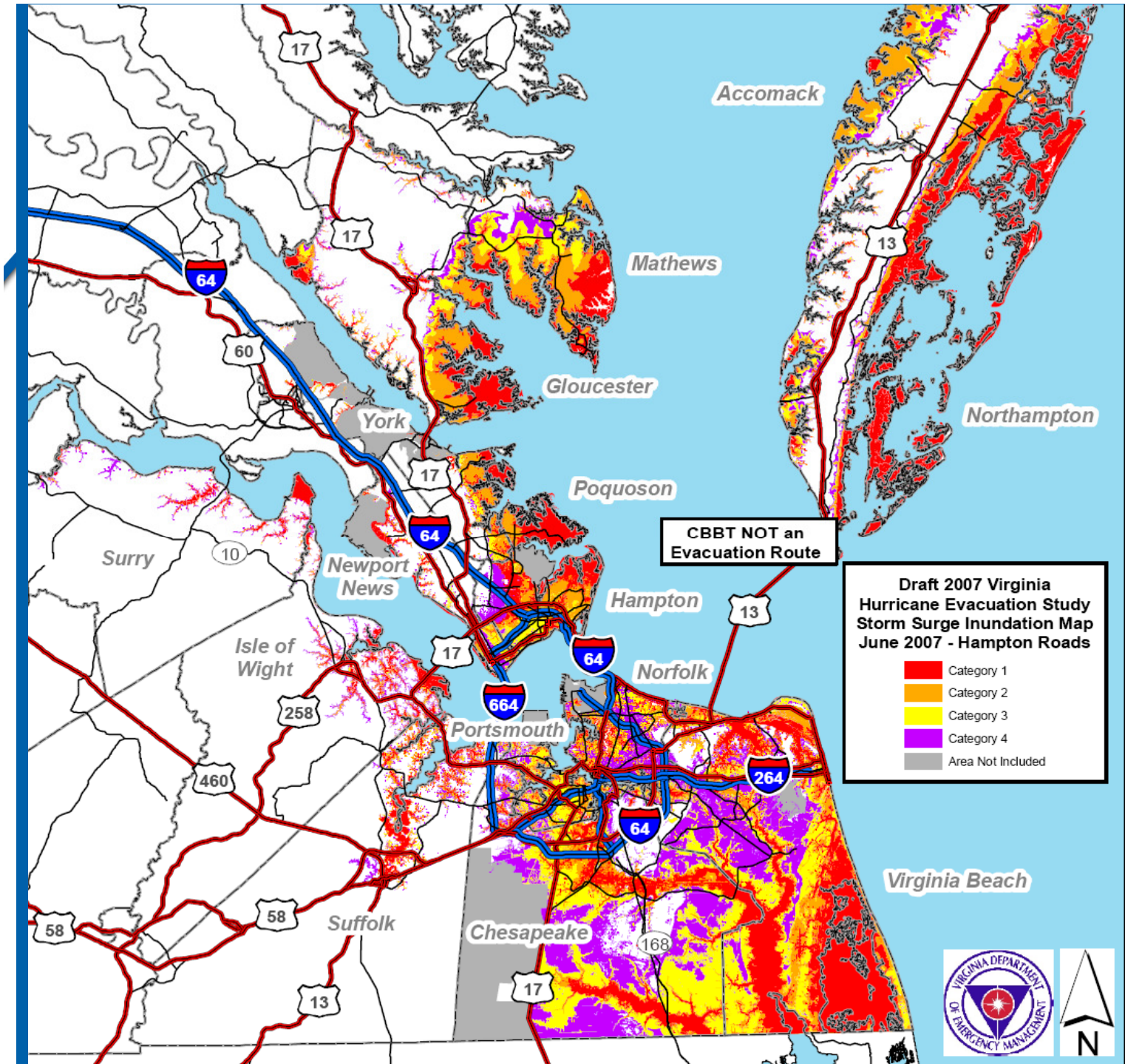
## Basic Evacuation Premise from State Hurricane Plan

The only persons who should evacuate are those in **potential storm inundation areas and those in mobile homes**. Others should shelter-in-place and be prepared to ride out the storm and be self-sufficient for at least 3 days without outside sources of electric power or water. An active hurricane awareness program is necessary. Persons who are well informed about the hurricane hazard will be better prepared to take the appropriate protective actions.



# STORM SURGE AREAS

# PEOPLE AT RISK



## Evacuation Planning

### CAT 4 - Planning Baseline – Worse Case Scenario\*

- @ 1.6 M Hampton Roads Population
- @ 1.2M impacted by CAT 4 Storm Surge
  - 75% of Hampton Roads population
- @ 400K vehicles projected to leave the region
- @ 900,000 people projected to evacuate the Hampton Roads area for CAT 4 threat

**61 hour Clearance Time**

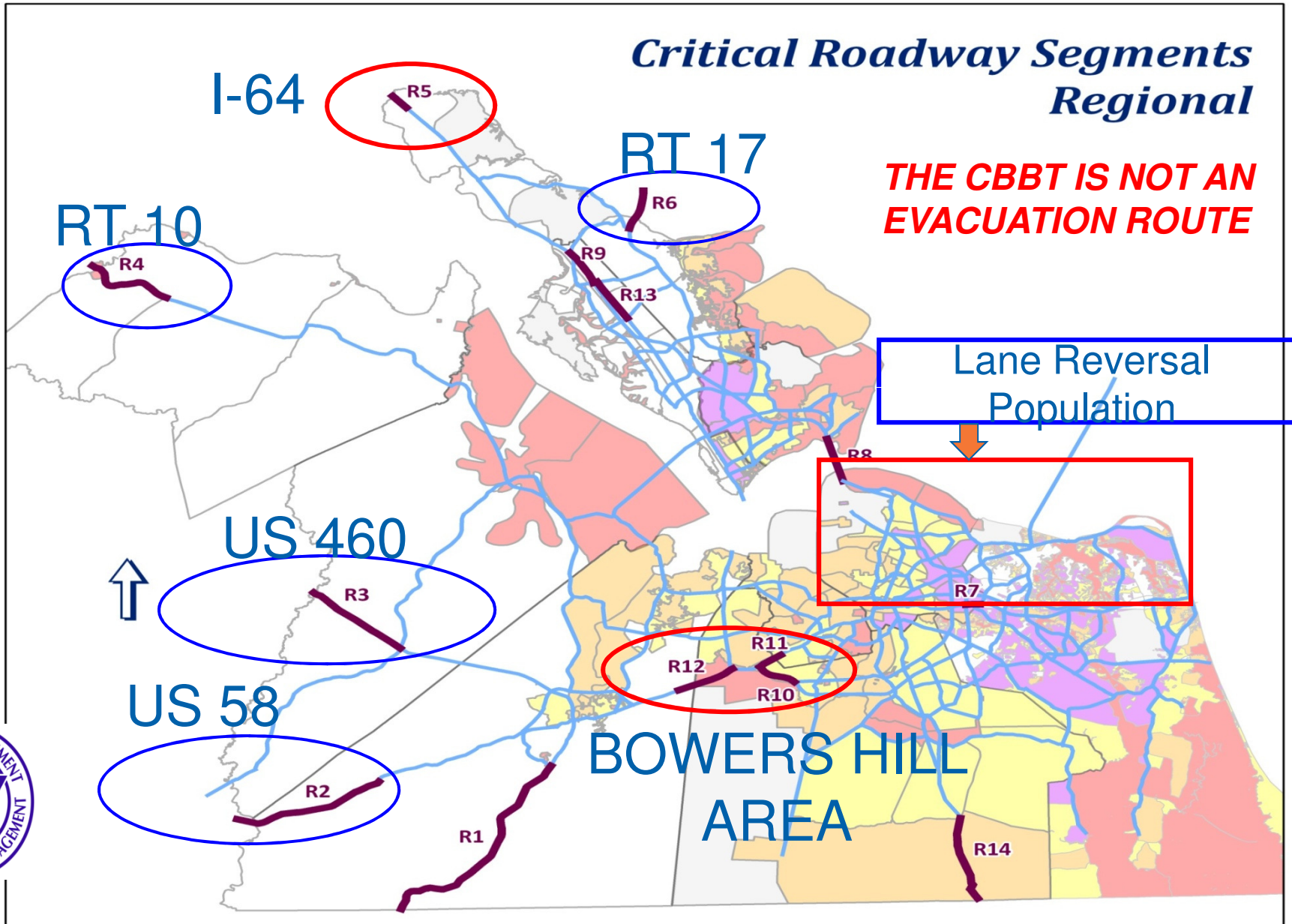
**38 hours for I-64 population w/Lane Reversal**

**\* Data from the 2009 FEMA Virginia Hurricane Evacuation Study**



### Critical Roadway Segments Regional

**THE CBBT IS NOT AN  
EVACUATION ROUTE**



## Evacuation Clearance Times

	<u>I-64</u>		<u>Bowers</u>	Time
	Lane Reversal		<u>Hill Area</u>	Reduction
	w/o	with		w/LR
<b>CAT 1</b>	13.0 Hr	N/A	11.0 Hr	N/A
<b>CAT 2</b>	23.0	16.0	23.0	7Hr
<b>CAT 3</b>	36.0	22.0	38.0	16Hr
<b>CAT 4</b>	60.0	38.0	61.0	23Hr

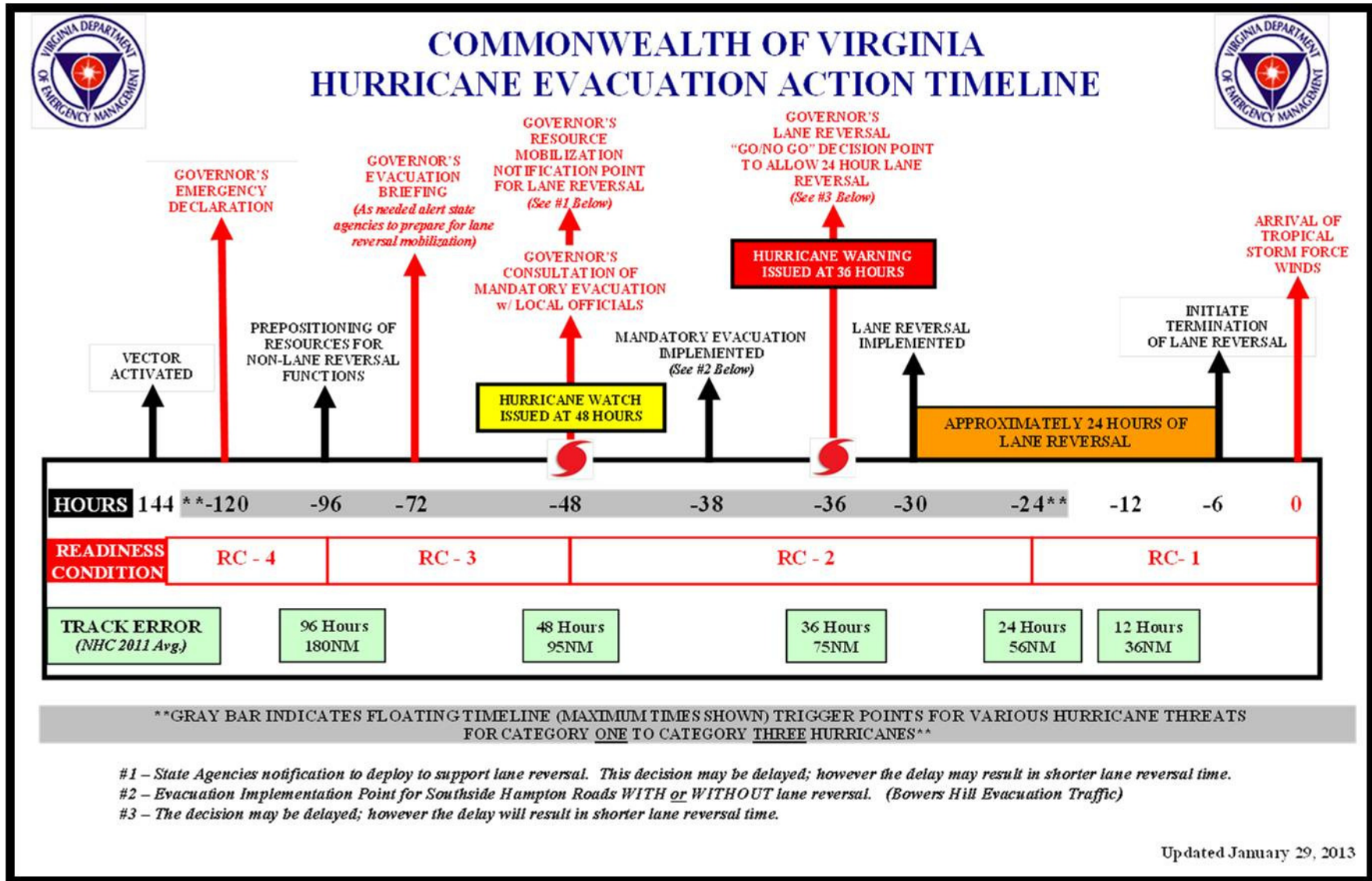


Evacuation Timing  
Determination  
Point

Above values w/o traffic incidents



# Hurricane Evacuation Timeline (Cat 3 storm)

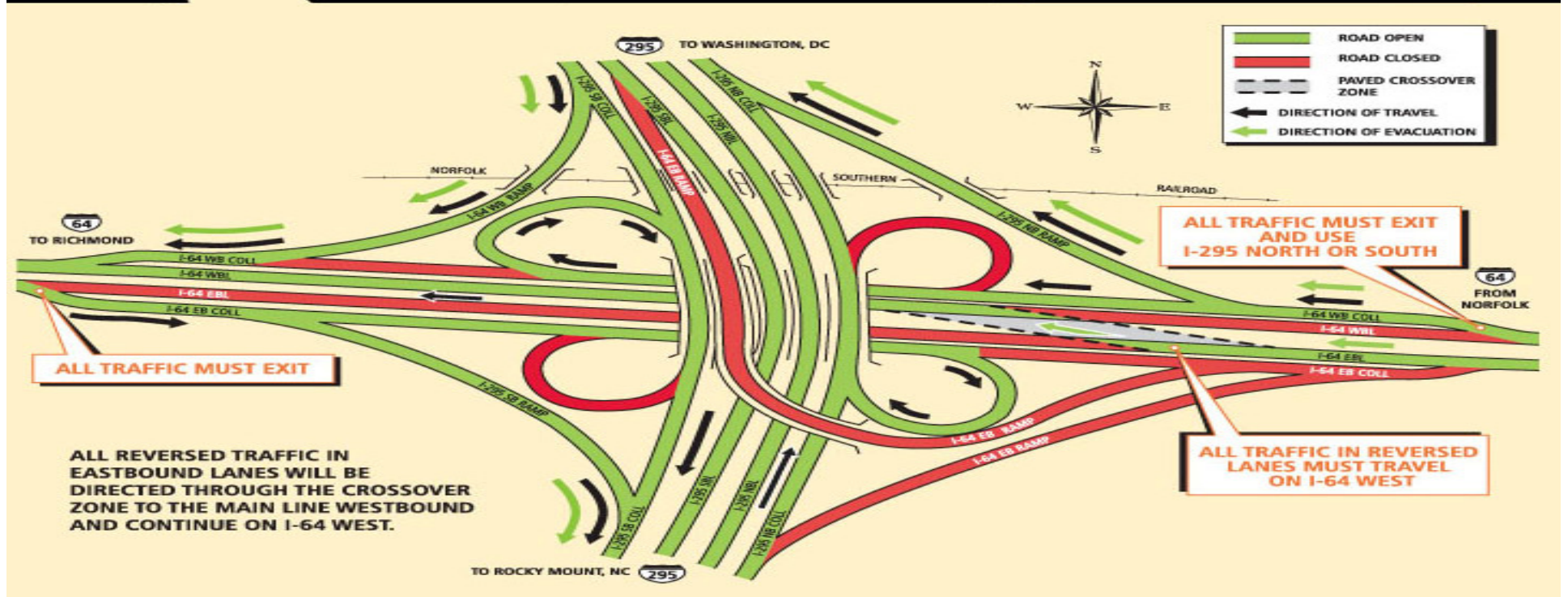
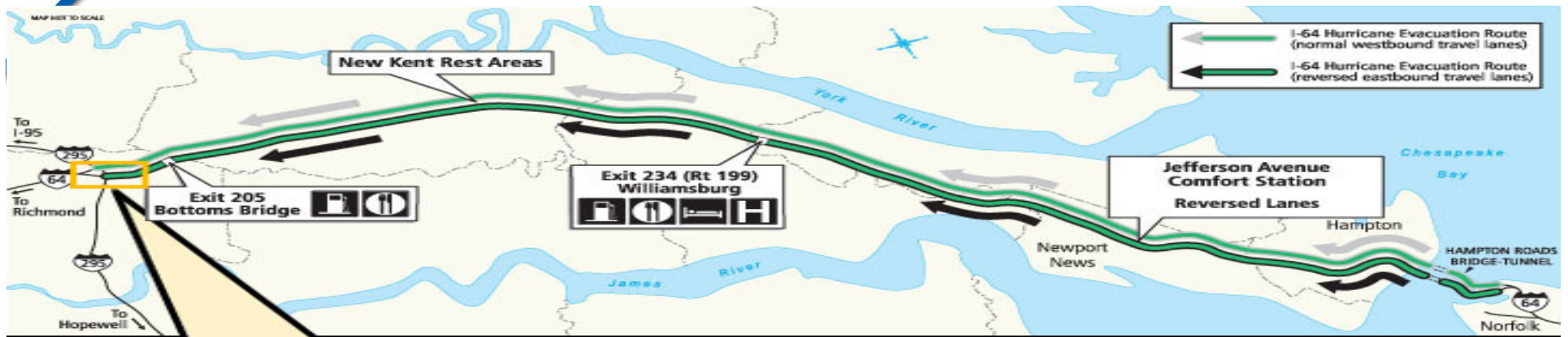


# VDOT Role

- **Provide staffing to open and close hurricane gates**
  - VDOT will have staff at every ramp
  - Report traffic conditions back to Traffic Operations Center (TOC) and Command Post
  - During the exercise on 7/21, VDOT/TAMS will report to every ramp however only gate closures will occur from MM 205 – MM 231.
- **Provide towing and fuel services along the I-64 reversed lanes**
- **Provide backup communications**
- **VDOT pre-deploys personnel and equipment from around the state into the Hampton Roads area to assist with hurricane response**



# I-295/I-64 interchange



# I-64 Reversal Personnel



Location	Exit	VDOT	VSP	VaNG	Totals
4 <sup>th</sup> View	273	4	4	3	11
15 <sup>th</sup> View	272	3	2	0	5
Mallory Street	268	5	2	3	10
County Street	267	4	2	3	9
LaSalle Ave	265	8	4	5	17
I-664	264	5	3	2	10
Mercury Blvd	263	6	4	5	15
Magruder Blvd	262	3	1	1	5
Center Parkway	261	5	3	3	11
J. Clyde Morris	258	8	4	6	18
Oyster Point	256	8	3	6	17
Jefferson Ave	255	11	6	6	23
Ft. Eustis Blvd	250	9	3	6	18
Yorktown Rd	247A	6	3	3	12
Merrimac Trail	247B	4	1	2	7

## I-64 Reversal Personnel, cont.

Location	Exit	VDOT	VSP	VaNG	Totals
Rt. 143	243	7	4	3	14
Rt. 199 (East)	242	9	3	6	18
Camp Peary	238	5	2	4	11
Rt. 199 (West)	234	3	6	1	10
Croaker Rd	231	9	3	6	18
Old Stage Rd	227	7	3	5	15
Rt. 33	220	5	4	3	12
Rt. 155	214	4	2	3	9
Rt. 106	211	4	2	3	9
Rt. 33 and Rt. 249	205	4	3	3	10
I-295	200	8	12	7	27
HRTOC		6	1	0	7
<b>Totals</b>		<b>160</b>	<b>89</b>	<b>99</b>	<b>348</b>

## Facility Closure Plan

- **Facility Closure Plan**
  - **Identified closure points for the following facilities: HRBT, MMMBT, Downtown and Midtown tunnels; James River Bridge, High Rise Bridge, Coleman Bridge**
- **Plans based on arrival of 45 mph winds and/or storm surge or as conditions warrant**
- **Closures will be determined by District Management in coordination with the Chief Engineer and will be based on actual conditions at the facility**
- **Those facilities with flood gates may take longer to open due to dewatering of the open cut**

## Chesapeake Bay Bridge Tunnel

- **Not a designated evacuation route**
- **Large portion of facility exposed to high winds**