



Central Virginia Metropolitan Planning Organization

Gary Christie, Executive Director

Bob White, Deputy Director

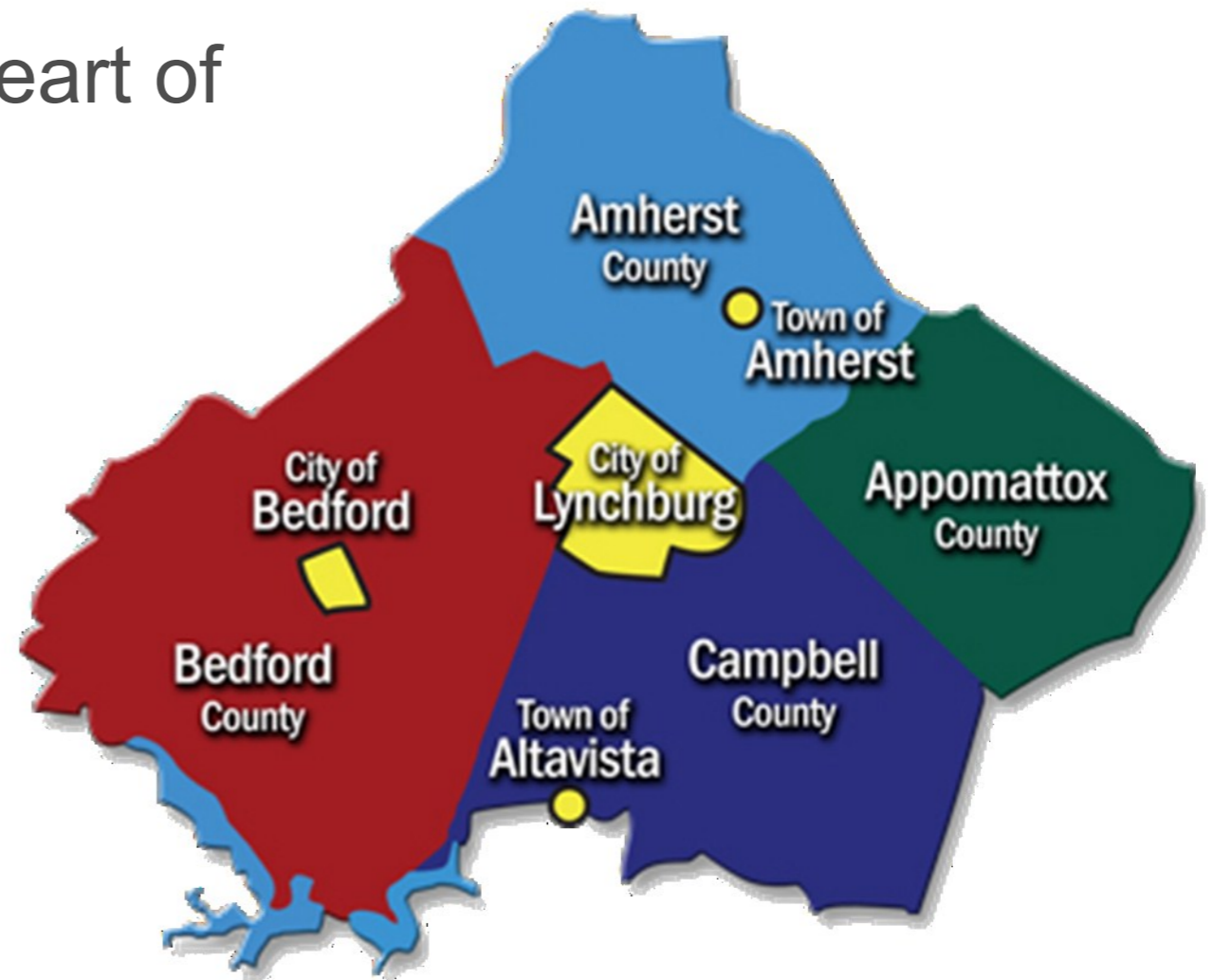
Region 2000 Local Government Council



Virginia's Region 2000 Partnership

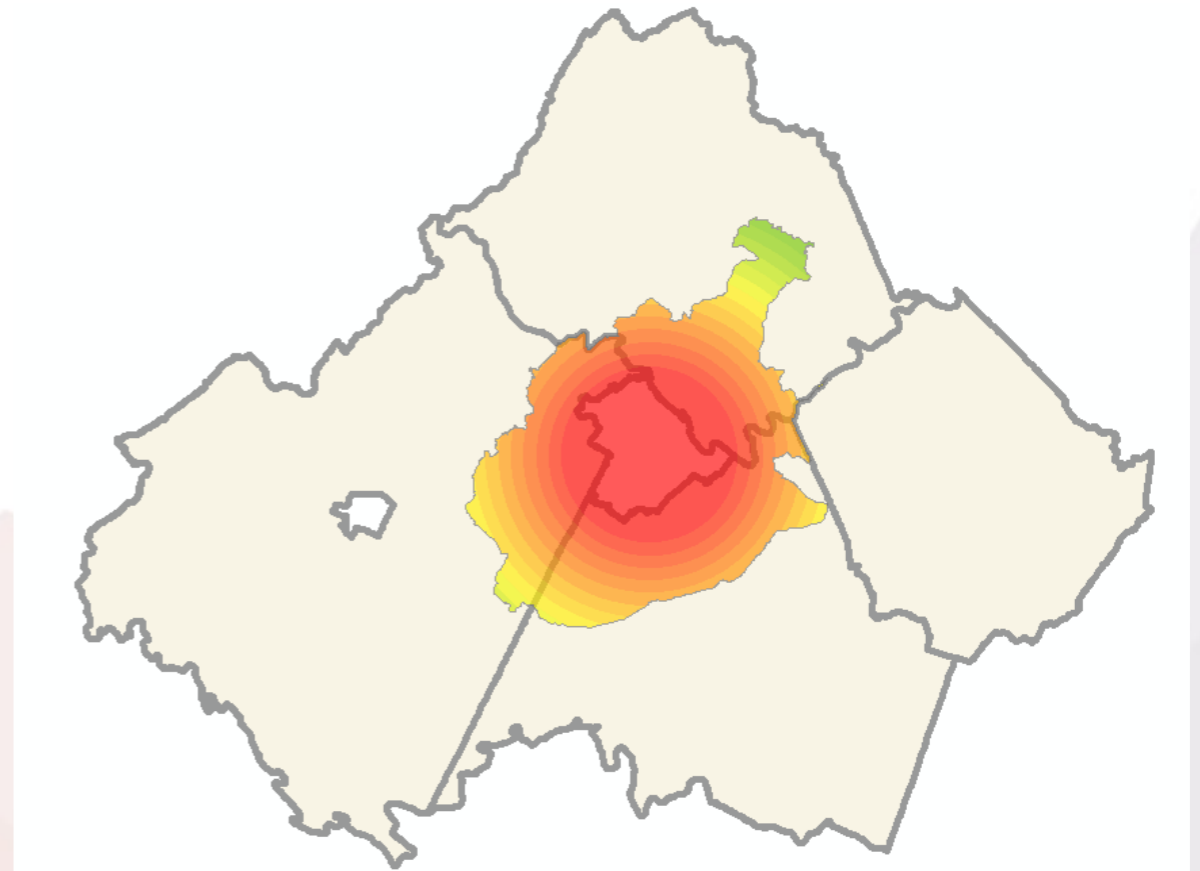
About Region 2000

- 2,000 square miles in the heart of Virginia.
- 4 counties, 2 cities
- Population: 254,240 (23% increase since 1990)
- Growing region



The MPO is the Economic Hub of the Region

- Highest population density
- High Tech Employment hub
- Higher Education hub



Hub for innovation:





**CENTRAL VIRGINIA
METROPOLITAN
PLANNING
ORGANIZATION**

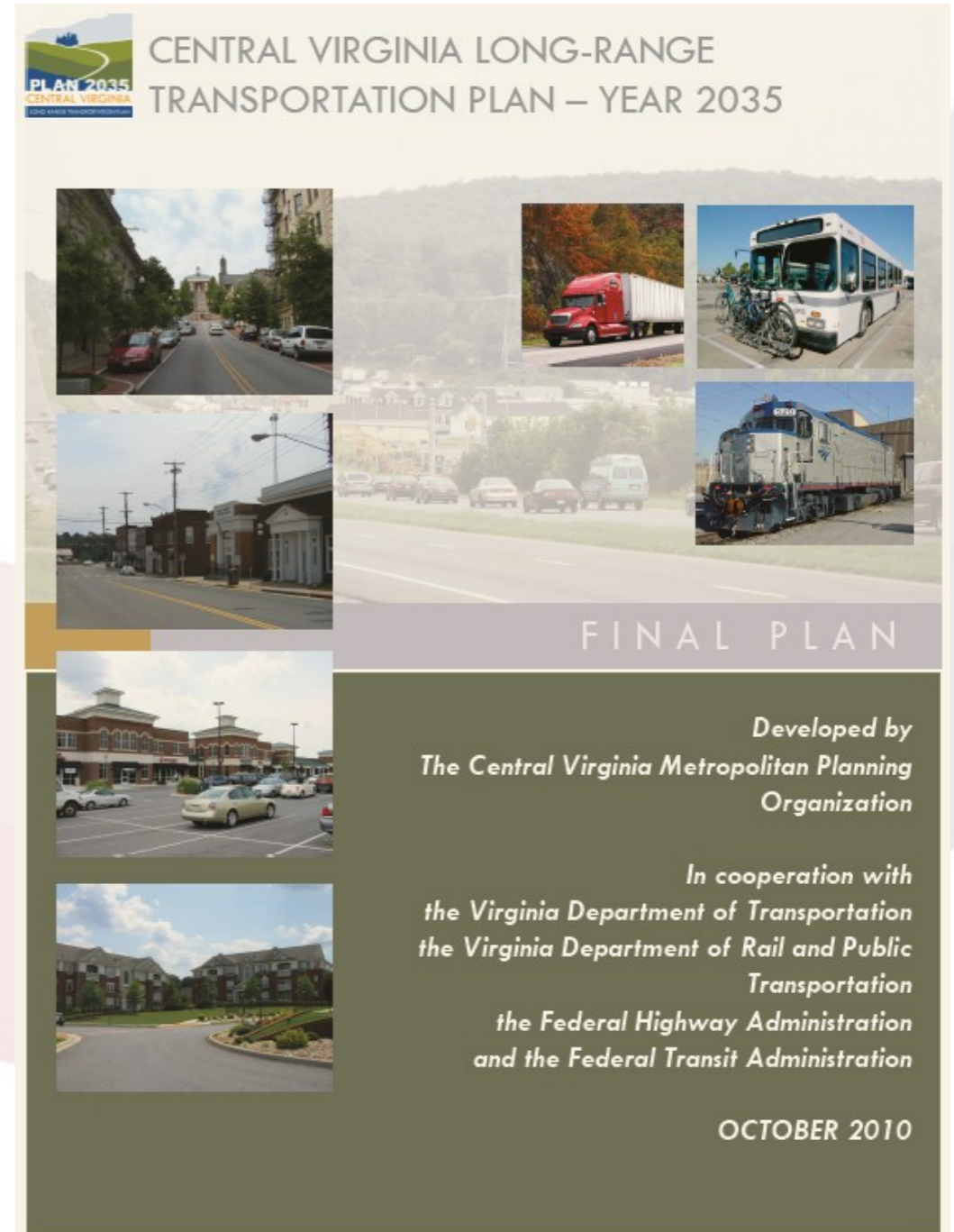
Planning Area





Central Virginia Long-Range Transportation Plan—Year 2035

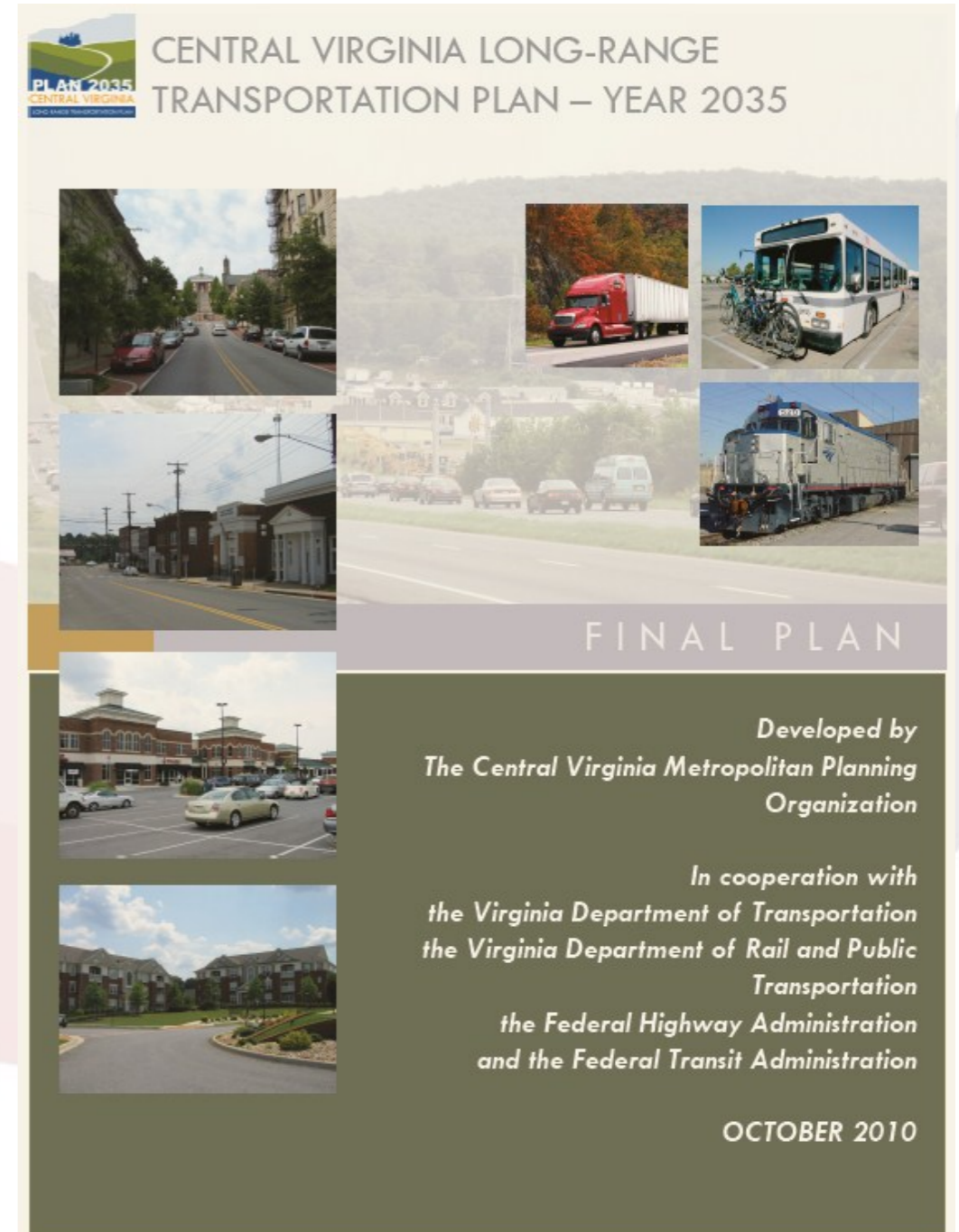
- Scenario Planning Process
- Transportation Challenges
- Regional Transportation Elements
- Financially Constrained Transportation Plan
- Future Planning, Programming, and Implementation





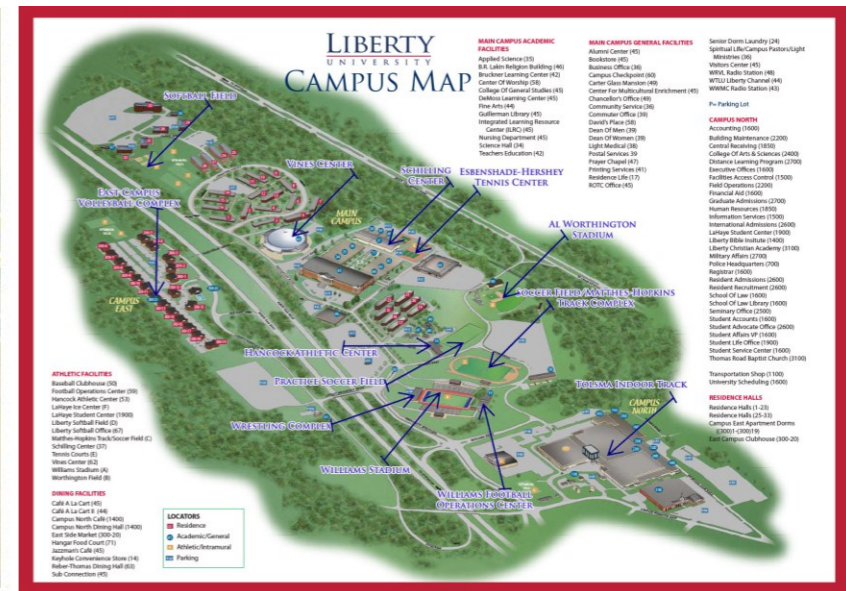
Funding Projections

- **\$96.7M in projected revenue through 2035 (about \$50M less than the previous plan update)**
- **\$1.6B in projected maintenance revenue through 2035**
- **Total projected revenue will address the VDOT SYIP projects**
- **Primary emphasis will be on bridge and safety projects**
- **Some major projects only have preliminary engineering (PE) and right-of-way (ROW) costs included**
- **Vision Plan includes all unfunded projects in LRTP**



Key Transportation Challenges

- Extend the lifecycle of current system
- Interregional connectivity
- Liberty University growth



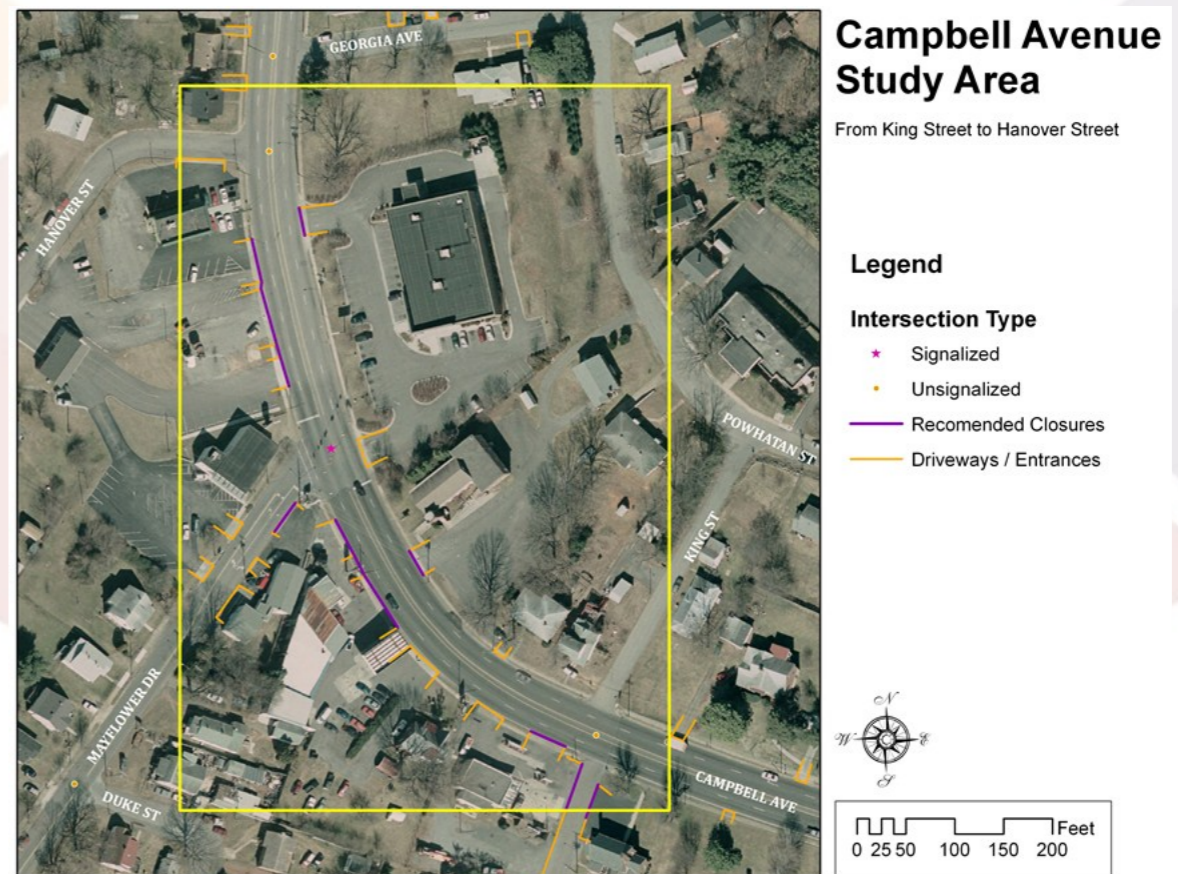
Linking Transportation Investment and Land Use Planning

- Corridor/Access Management Studies



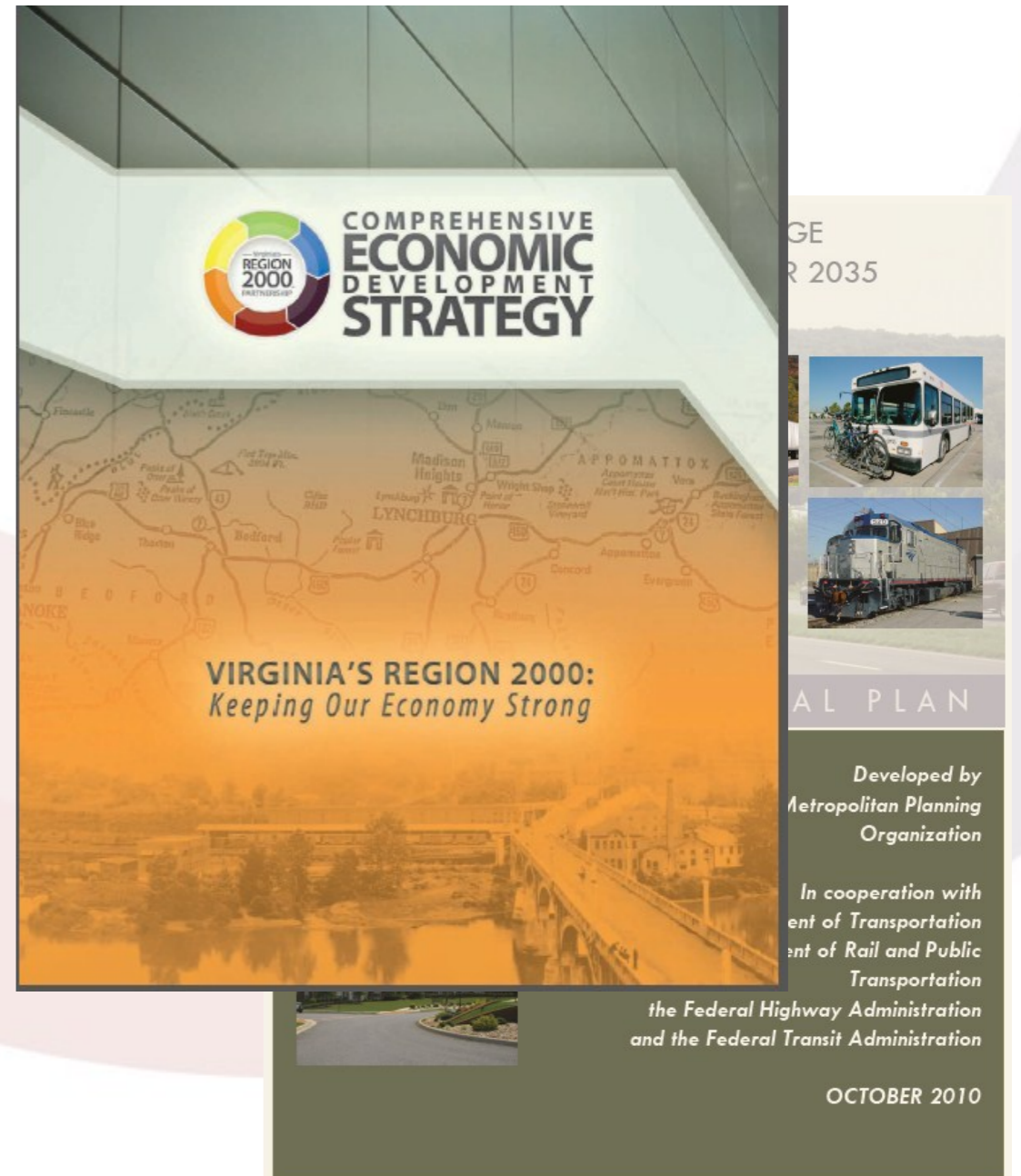
*Amherst-Ambriar Corridor
Campbell Avenue Corridor
Wards Ferry Road Corridor (in progress)*

- Regional Action Plan for Coordinating Land Use and Transportation Planning
- Scenario Planning
- City of Lynchburg Connectivity and Access Management Support



Critical Economic Development Issue

- CVLRTP 2035
- Comprehensive Economic Development Strategy
- Community Evaluation Process



Key Comments

“

70% of our local business leaders responded in a recent survey that inter-regional transportation — and a Northern route more specifically — should be the number one priority for local economic developers

”

“

If the Rt. 460 Corridor could be built from the Port/Norfolk through Region 2000, this would have a tremendous impact on our economy and our own business

”



Liberty University

With an on-campus enrollment of 12,500 students and 6,986 employees, Liberty University's economic impact on the Lynchburg Region continues to grow (\$342 Million in FY 12).



Liberty University continues to grow:

- ❑ \$40 Million Health and Medical Center
- ❑ 40,000 ft² Aviation Program Facility

Growth brings new transportation challenges



Alternative Transportation

Transit



Biking



Walking



Commuting



Bicycle/Pedestrian Initiatives



Partnered with local cyclists and VDOT to bring “Share the Road” signs to designated loops in Region 2000.

Planning for Bike Week

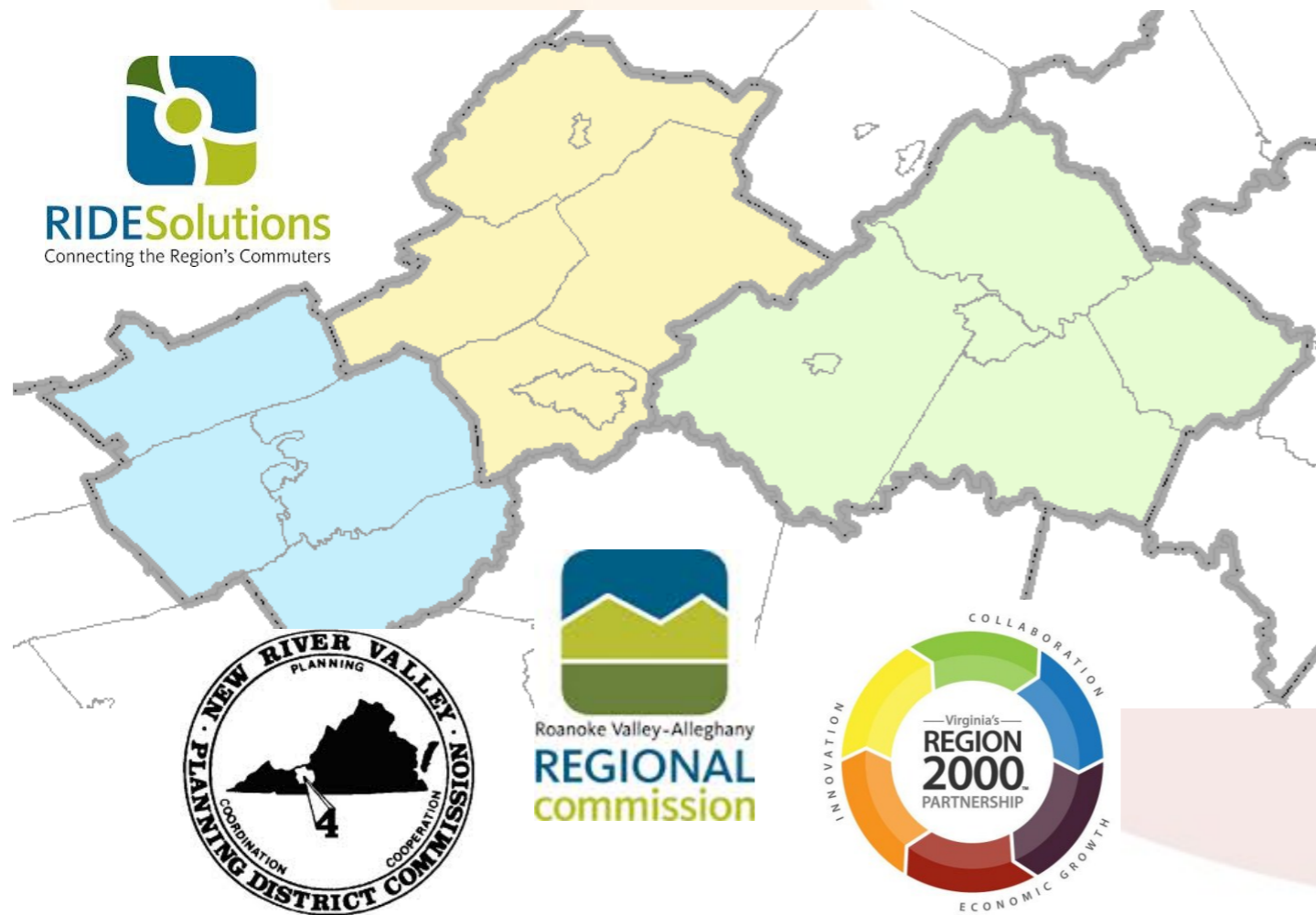


Regional Sidewalk Inventory designed and maintained by Region 2000; incorporated into Safe Routes to School application.



Ride Solutions

Working Together to provide a Regional Alternative Transportation Service



Match commuters based on:

- Origin and destination points
- Schedule
- Lifestyle qualifications

Reduce single occupant vehicles

Improve regional air quality

Reduce energy consumption

Easing the strain on transportation infrastructure.



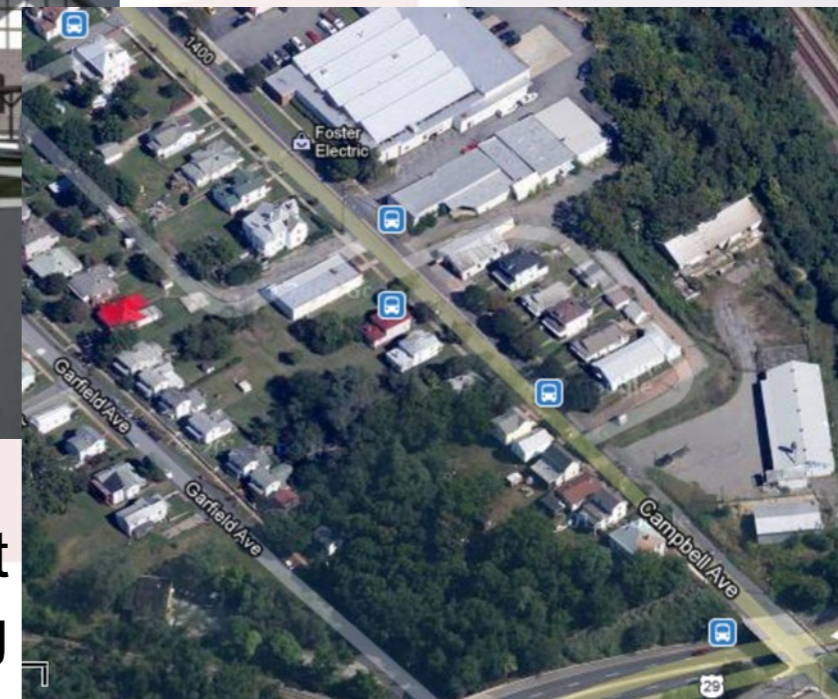


Planning Assistance



- Improving Route Efficiency
- Customer Service Improvements
- New Hybrid Fleet = Reduced Maintenance Costs

- Construction starting on New Transfer Center
 - Public is actively engaged



- Google Transit
- *Routematch* up and running



Key Projects



Odd Fellows Road Interchange and Connector

Safety Improvements



Widening Greenview Drive



Greenview Drive



\$10.5 Million Needed

Widen Greenview Drive from 2 to 4 lanes.

- Revised schedule required.
- Urban Construction Initiative Project.
- Partial PE only.
- Match funds provided in Quarterly Payment
- No local match per 2005 Budget Amendment

Estimates & Schedule		
	Estimated Cost (Thousands)	Schedule
Prelim. Eng. (PE)	\$1,283	Underway
Right of Way (RW)	\$2,081	FY2022
Construction (CN)	\$8,169	FY2022
Total Estimate	\$11,533	



Odd Fellows Road Interchange & Connector

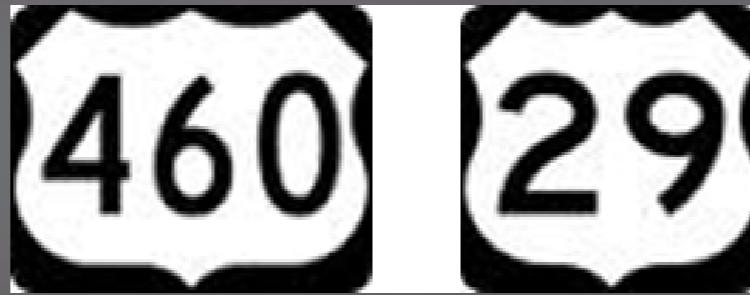


New Interchange extending Odd Fellows Road over Route 29/460

- Revised schedule required based upon available funding.

Estimates & Schedule		
	Estimated Cost (Thousands)	Schedule
Prelim. Eng. (PE)	\$3,877	Underway
Right of Way (RW)	\$6,000	FY2014
Construction (CN)	\$21,838	FY2014
Total Estimate	\$31,715	





\$4.5 Million Needed

[Report a problem](#) Image Date: September 2008

Scope of Work: Safety improvements

- State Funds – Advanced Construction for future federal conversion.

Estimates & Schedule		
	Estimated Cost (Thousands)	Schedule
Prelim. Eng. (PE)	\$1,371	Complete
Right of Way (RW)	\$7,370	Underway
Construction (CN)	\$4,335	FY2015
Total Estimate	\$13,076	



Questions?

Gary Christie

Executive Director

434-845-3491 ext. 211

gchristie@region2000.org

Robert E. White

Deputy Director

434-845-3491 ext. 220

bwhite@region2000.org

