

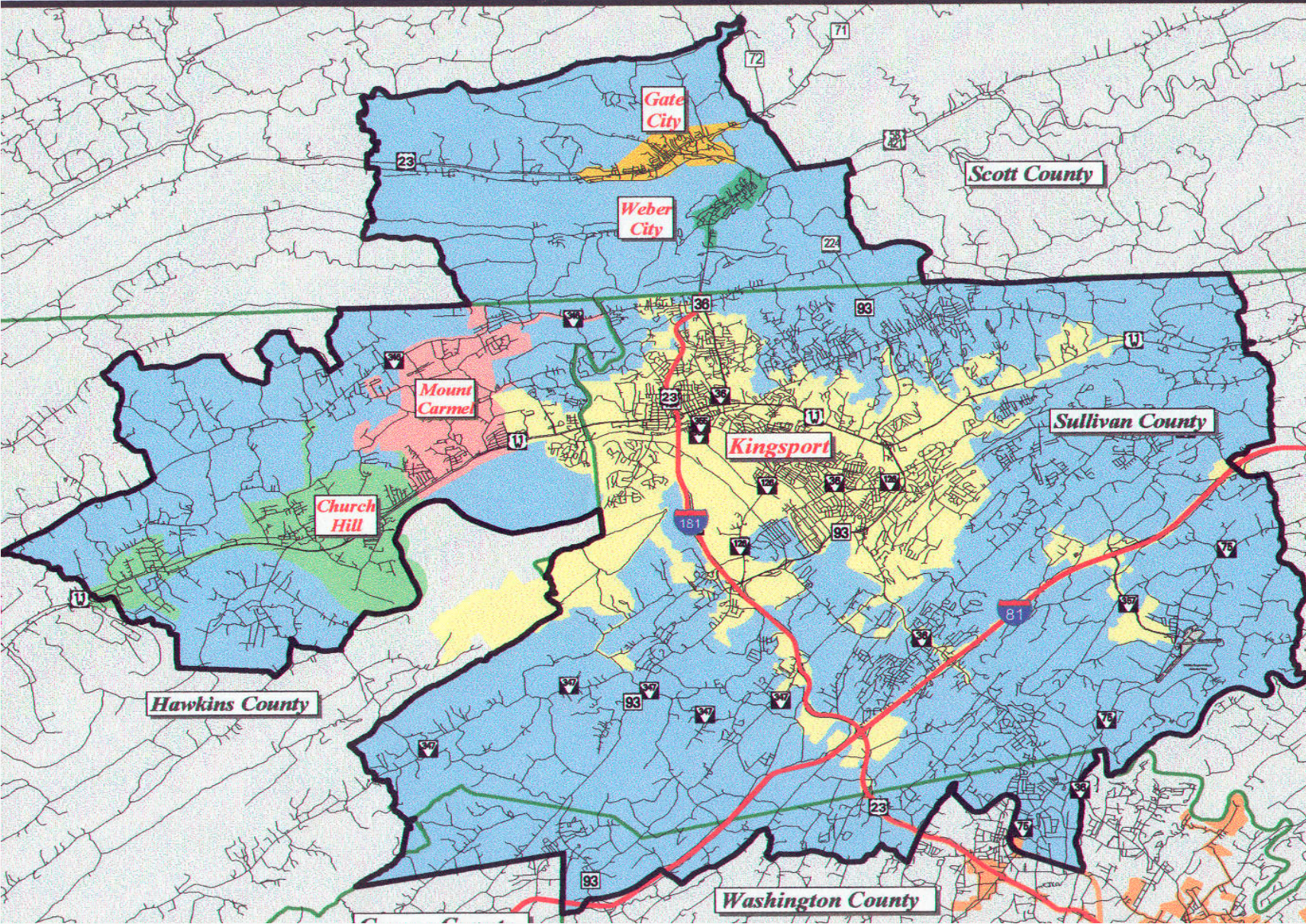
KINGSPORT TN/VA MTPO

Commonwealth Transportation Board Workshop

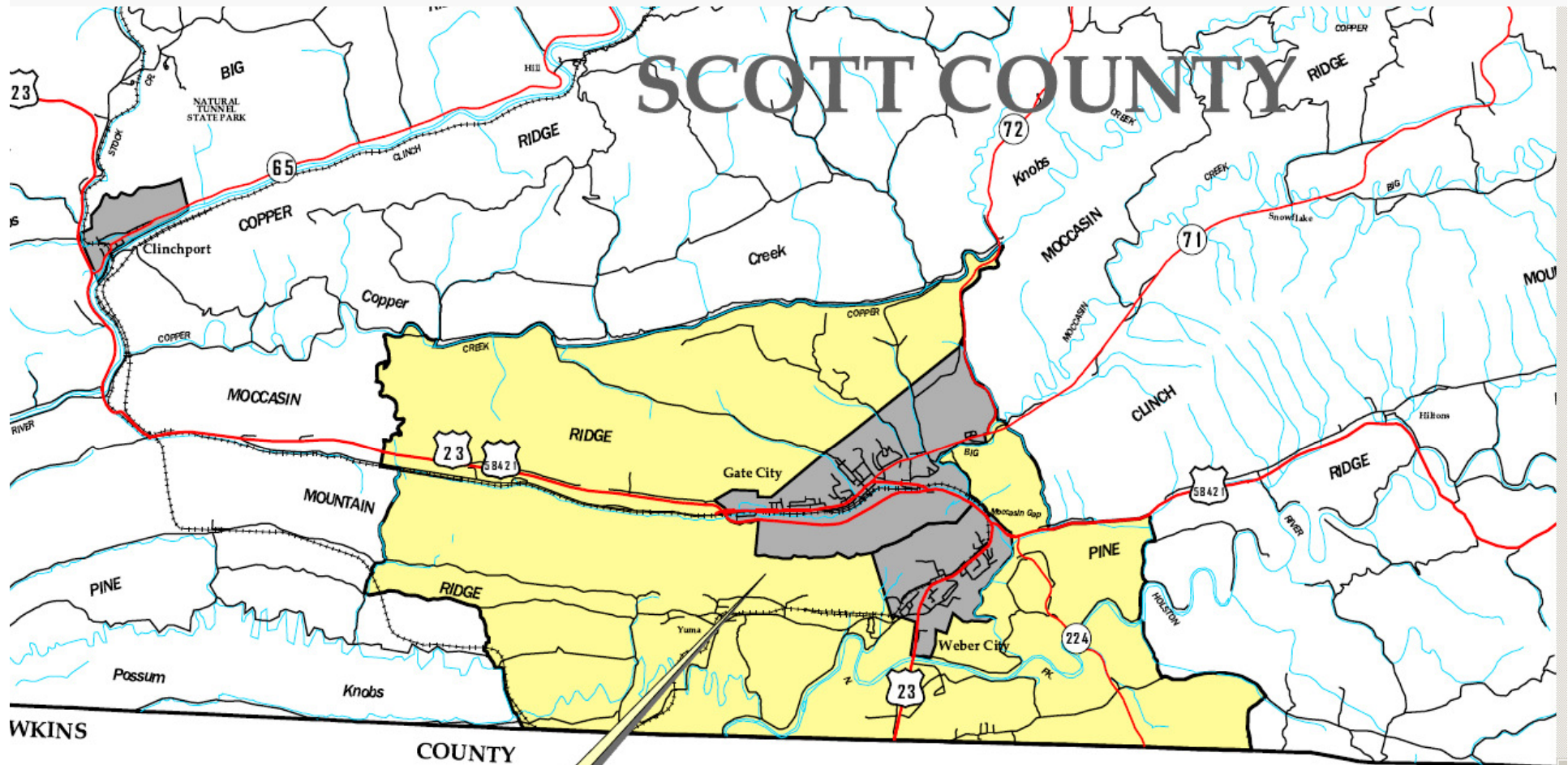
March 20, 2013



Kingsport Tn/Va MPO Area



Scott County - MPO Area



**SCOTT COUNTY
MPO AREA**

Scott County - Problems

- **Accessibility – travel time, emergency services**
- **Congestion (LOS) – US. 23**
- **Access Management - curb cuts, frontage roads**
- **Safety; sight distance, clear zones, etc.**
- **Interstate / Airport Connections**

Economic Opportunities

Tax Structure

Access to Large Market

Developable Properties

Through Traffic – US 23 – Ohio to I-26

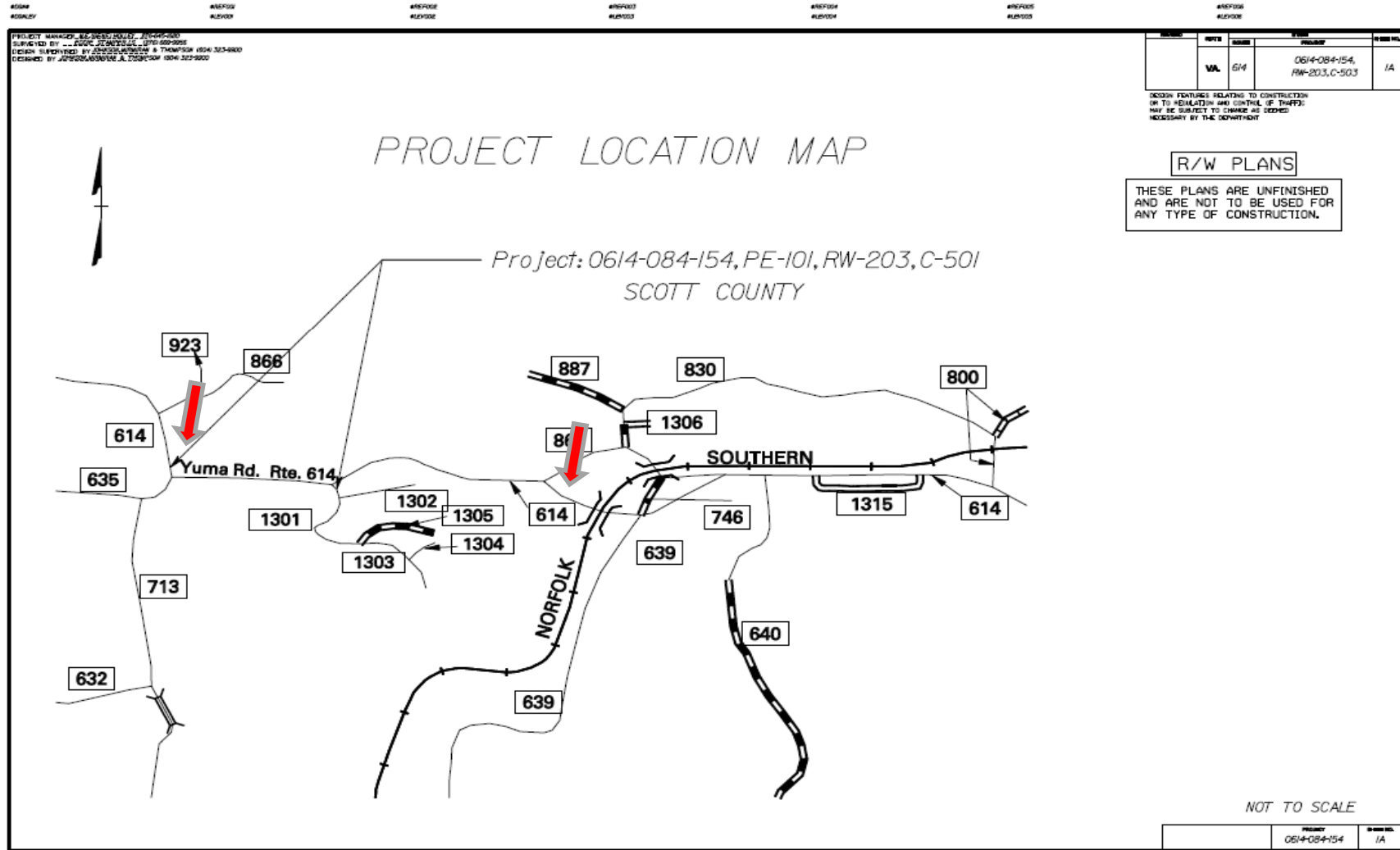


U.S. Route 23



Current Projects

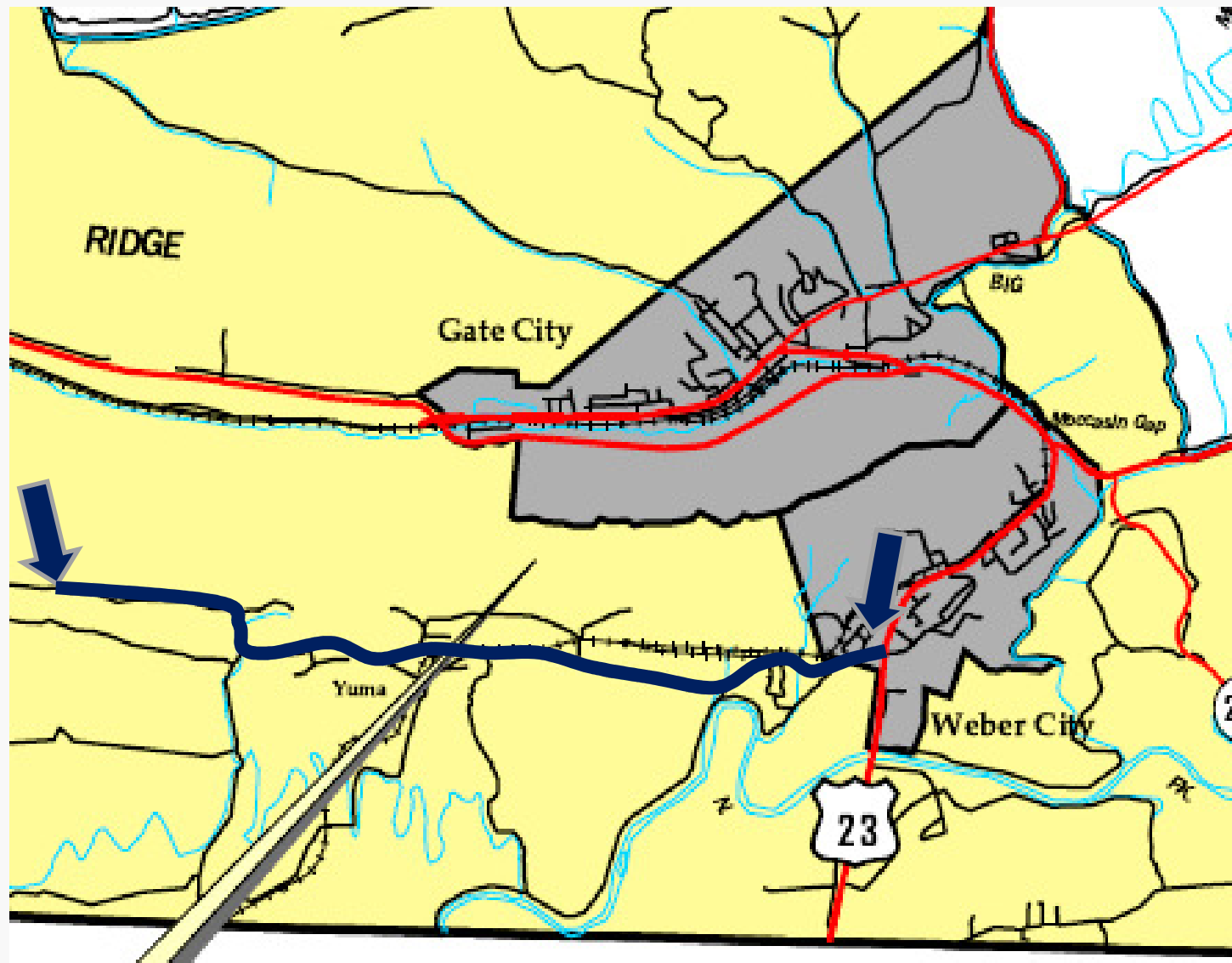
□ Yuma Road - Phase II; Reconstruction



☐ Yuma Road - Phase II; Reconstruction



Yuma Road

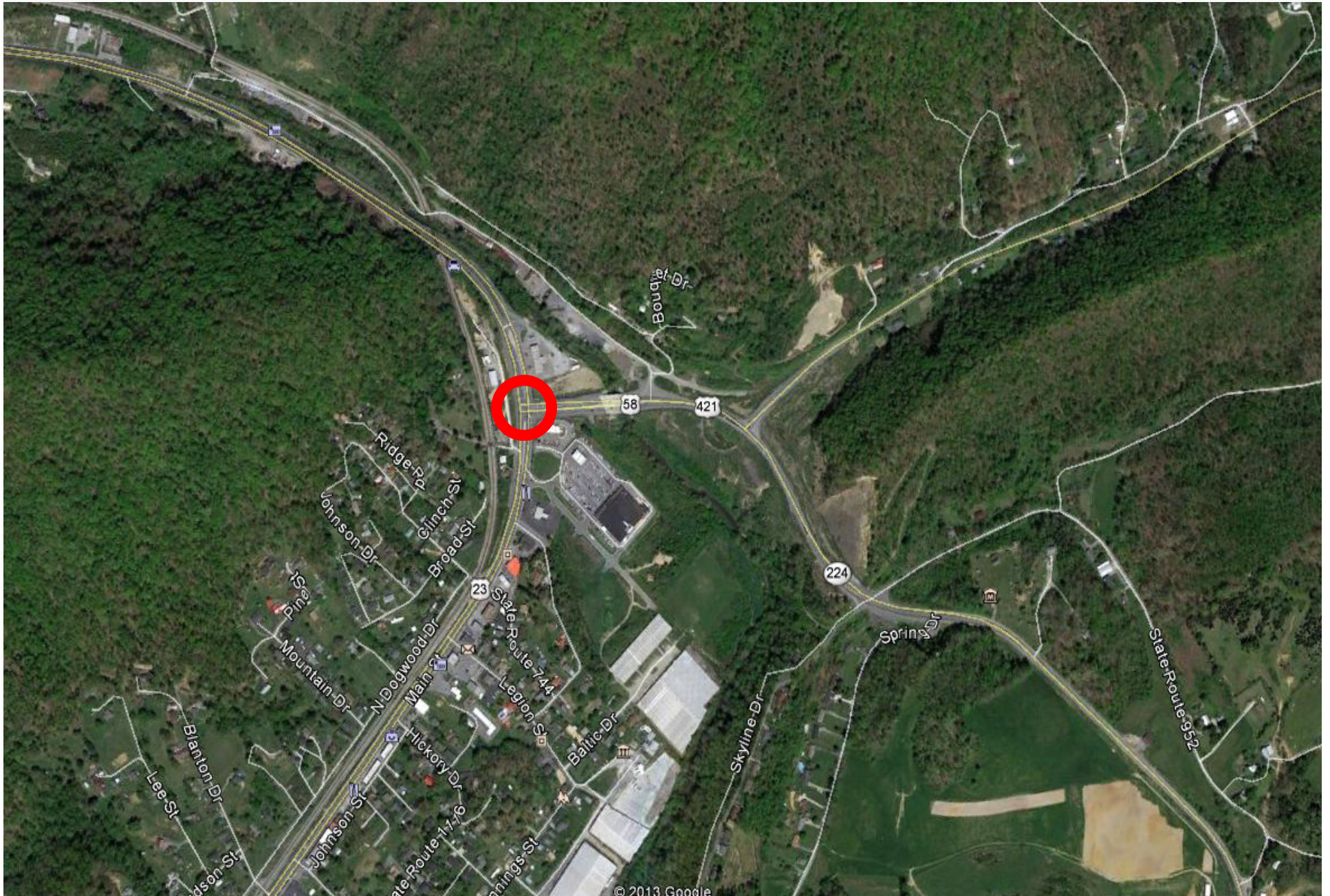


Current Projects

❑ Moccasin Gap - Phase II



□ Mocassin Gap - Phase II



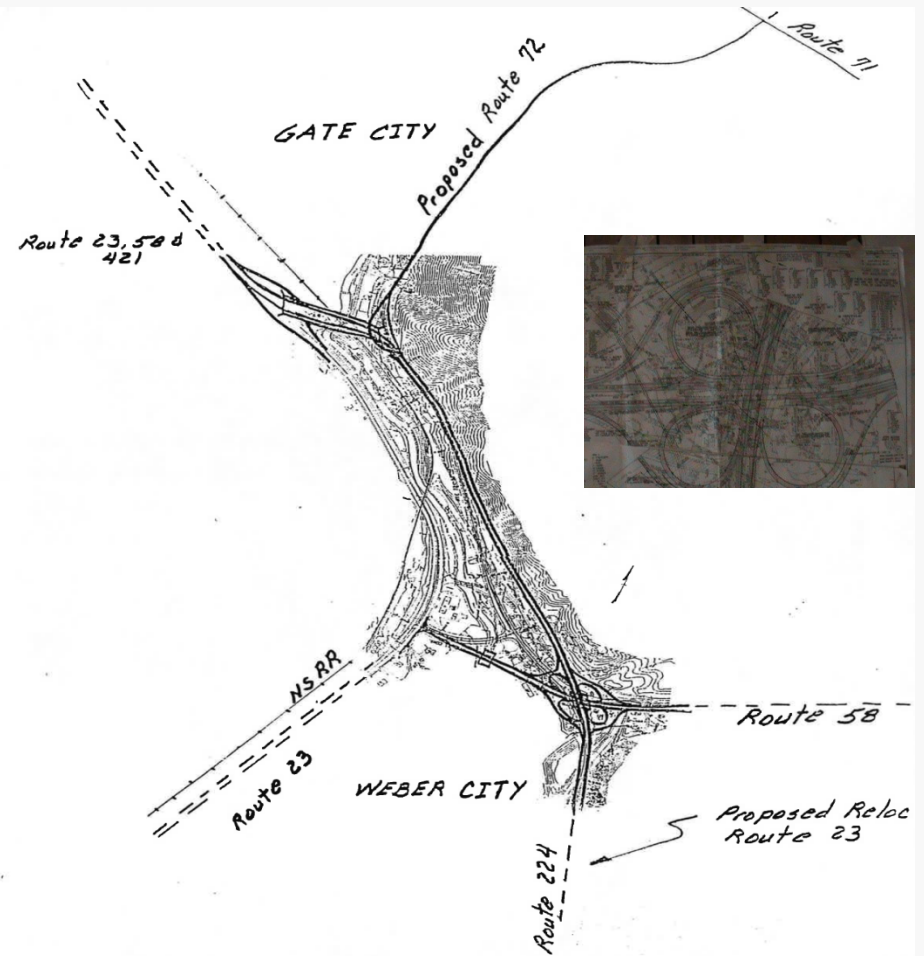
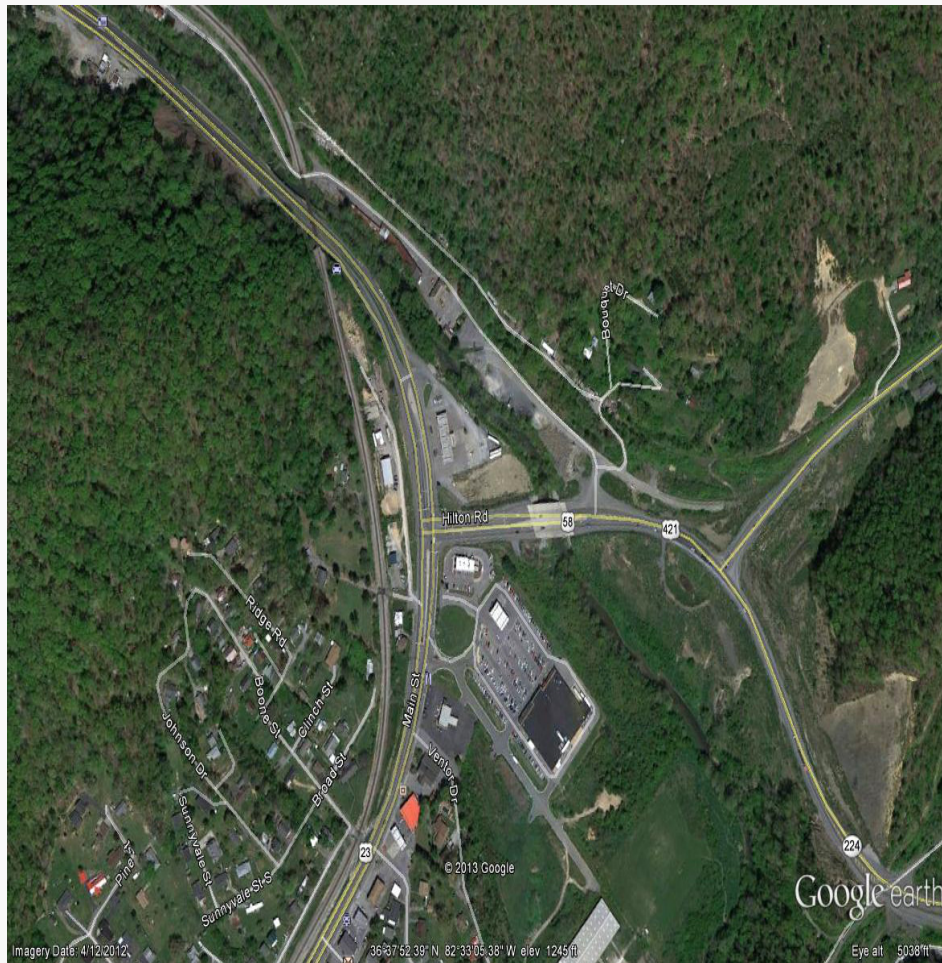
Long-Range Projects

- U.S. 23 (State Line to Gate City)
 - signal coordination
 - access management (frontage roads)



Long-Range Projects

- Moccasin Gap
 - Phase III (interchange)
 - SR 72 connection (By-Pass)



Long-Range Projects

- SR 72 link (by-pass) - to SR 71 and existing SR 72



SR 72 connection (Clinch Mtn. By-Pass)



© 2013 Google
Image © 2013 TerraMetrics

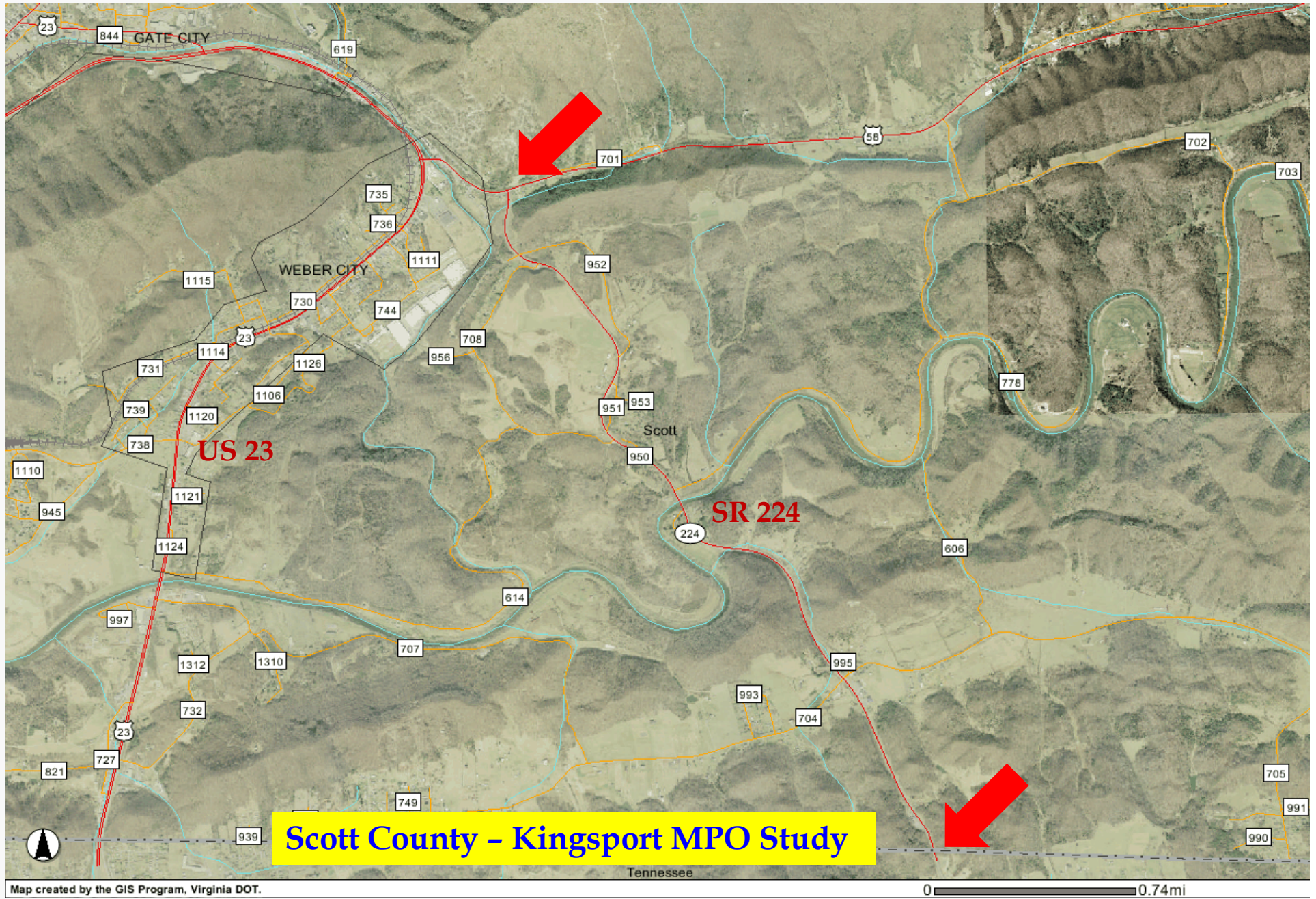
Google earth

Long-Range Projects

- ❑ SR 224 - widening (match Tennessee)



State Route 224 (Wadlow Gap Road) Corridor



Long-Range Projects

- SR 71 widening (center lane / shoulders)

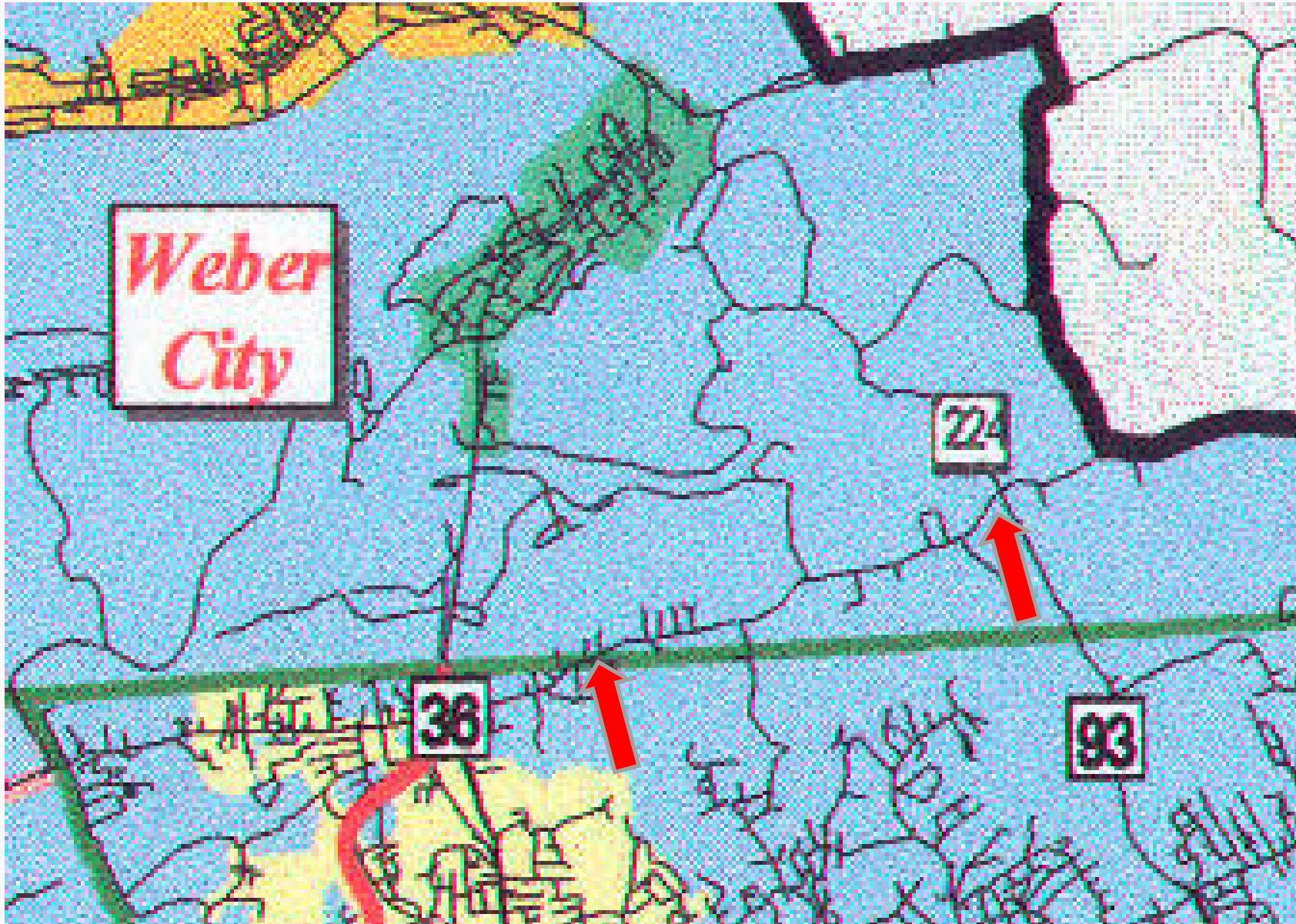


Long-Range Projects

- East Carter's Valley Road – geometric improvements / shoulders



East Carter's Valley Road



Safety Improvements

shoulder (clear zones) improvement



site distance study / improvements



bridge repair



Transportation Systems Management

Potential Effects of Improving Traffic System;

- Ensure efficient use of existing road space
- Reduce vehicle use in congested areas
- Improve transit service
- Improve internal transit management efficiency

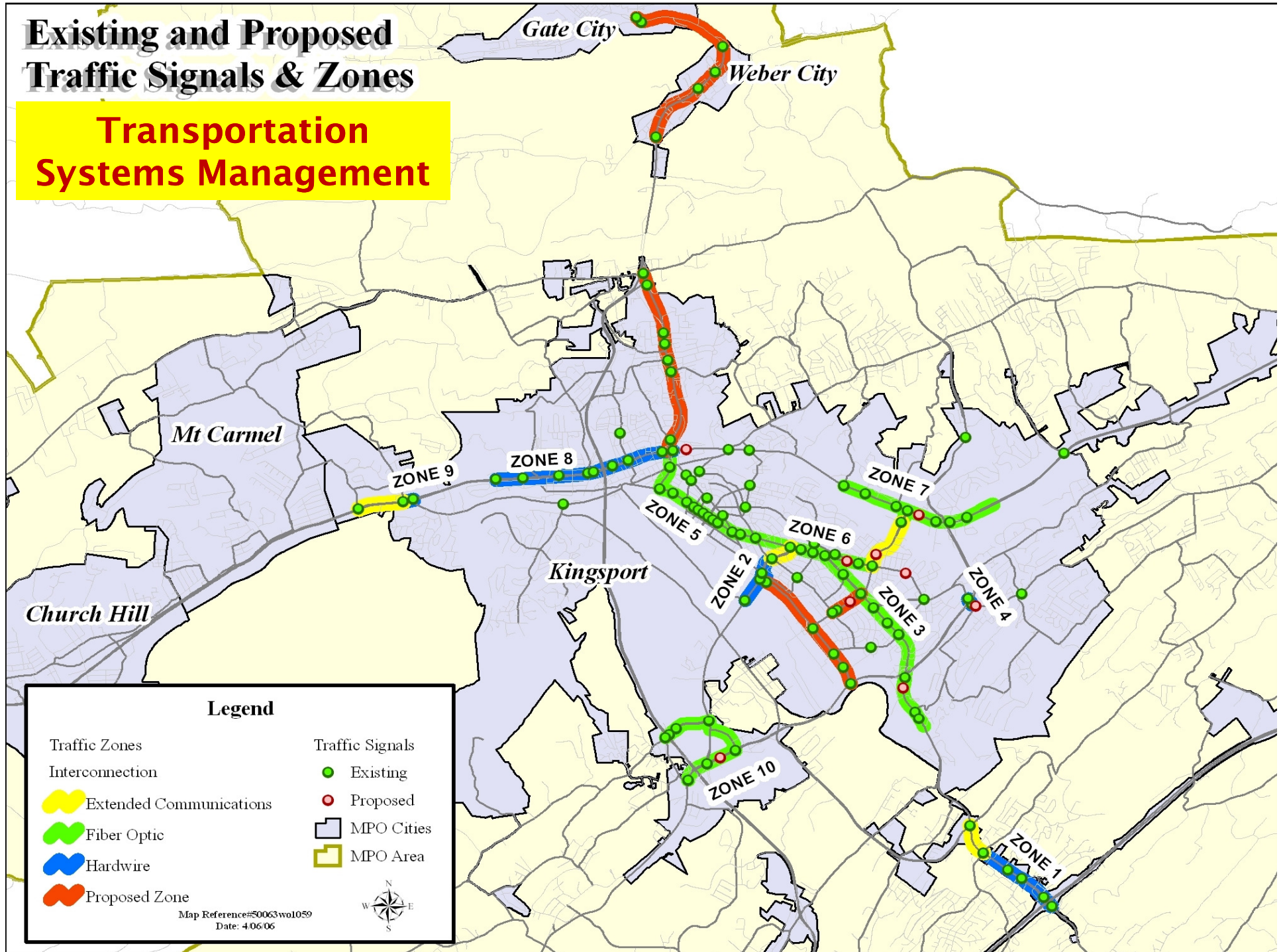
For the Kingsport MPO region, TSM will focus on the first two action categories resulting in the following short term objectives:

- Increased efficiency of the existing transportation facilities,
- Increased urban mobility,
- Social, economic, and environmental considerations
- Energy conservation
- Improved air quality
- Safety



Existing and Proposed Traffic Signals & Zones

Transportation Systems Management



Freight Component (Truck and Rail)

TABLE 4
Kingsport MPO Primary Freight Corridors
Interstate and Highway

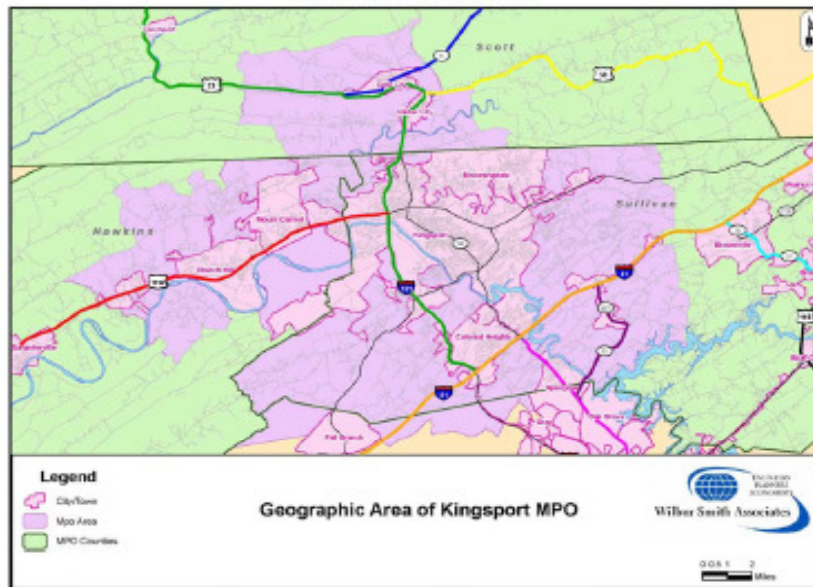


Table 5-10
Top Five Commodities (By Weight)
From Scott County By Truck (2007)

COMMODITY	TRUCK TONS
Broken Stone or Riprap	125,144
Primary Forest Material	74
Motor Vehicle Parts or Accessories	11
Motor bus or Truck Bodies	5
Warehouse and Distribution	1
Other Commodities	1
Total Tons	125,236

Source: IHS Global Insight Transearch, 2007

Note: Data is only provided for freight flows from Scott County, VA to TN

Table 5-16
Top Five Destinations (By Weight)
From Scott County By Truck (2007)

DESTINATION	TRUCK TONS	PERCENTAGE
Washington County, TN	48,068	38.4%
Carter County, TN	43,169	34.4%
Sullivan County, TN	20,917	16.7%
Johnson County, TN	5,582	4.5%
Greene County, TN	2,542	2.0%
Other TN Destinations	125,236	4.0%
Total Tons	125,236	100%

Source: IHS Global Insight Transearch, 2007

Note: Data is only provided for freight flows from Scott County, VA to TN

Table 5-19
Top Five Destinations (By Weight)
To Scott County By Truck (2007)

ORIGIN	TRUCK TONS	PERCENTAGE
Haywood County, TN	888	47.6%
Shelby County, TN	296	15.9%
Knox County, TN	153	8.2%
Davidson County, TN	78	4.2%
Hawkins County, TN	72	3.9%
Other TN Destinations	377	20.2%
Total Tons	1,864	100%

Source: IHS Global Insight Transearch, 2007

Note: Data is only provided for freight flows to Scott County, VA from TN

Public Transit (Bus / Van) Service

Improved Coordination between these Agencies;

Virginia - MEOC (Mountain Empire Older Citizens)

Tennessee - KATS (Kingsport Area Transit Service)

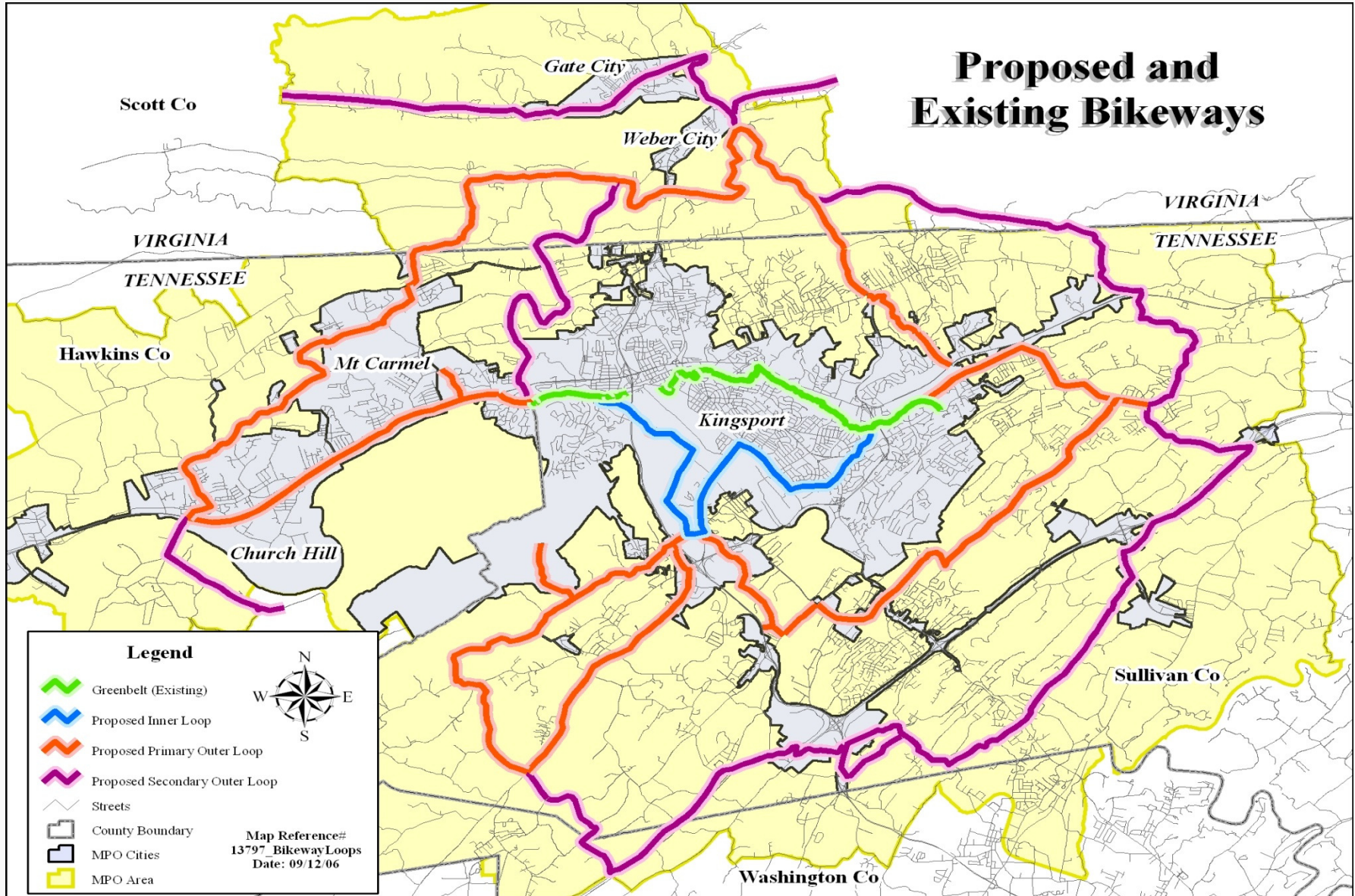
Tennessee - NETRANS (Northeast Tn. Rural Transit Service)

Figure 5-13
Official Park-and-Ride Lots in Scott County, Virginia



Source: LENOWISCO, 2035 Rural Long Range Transportation Plan, 2011

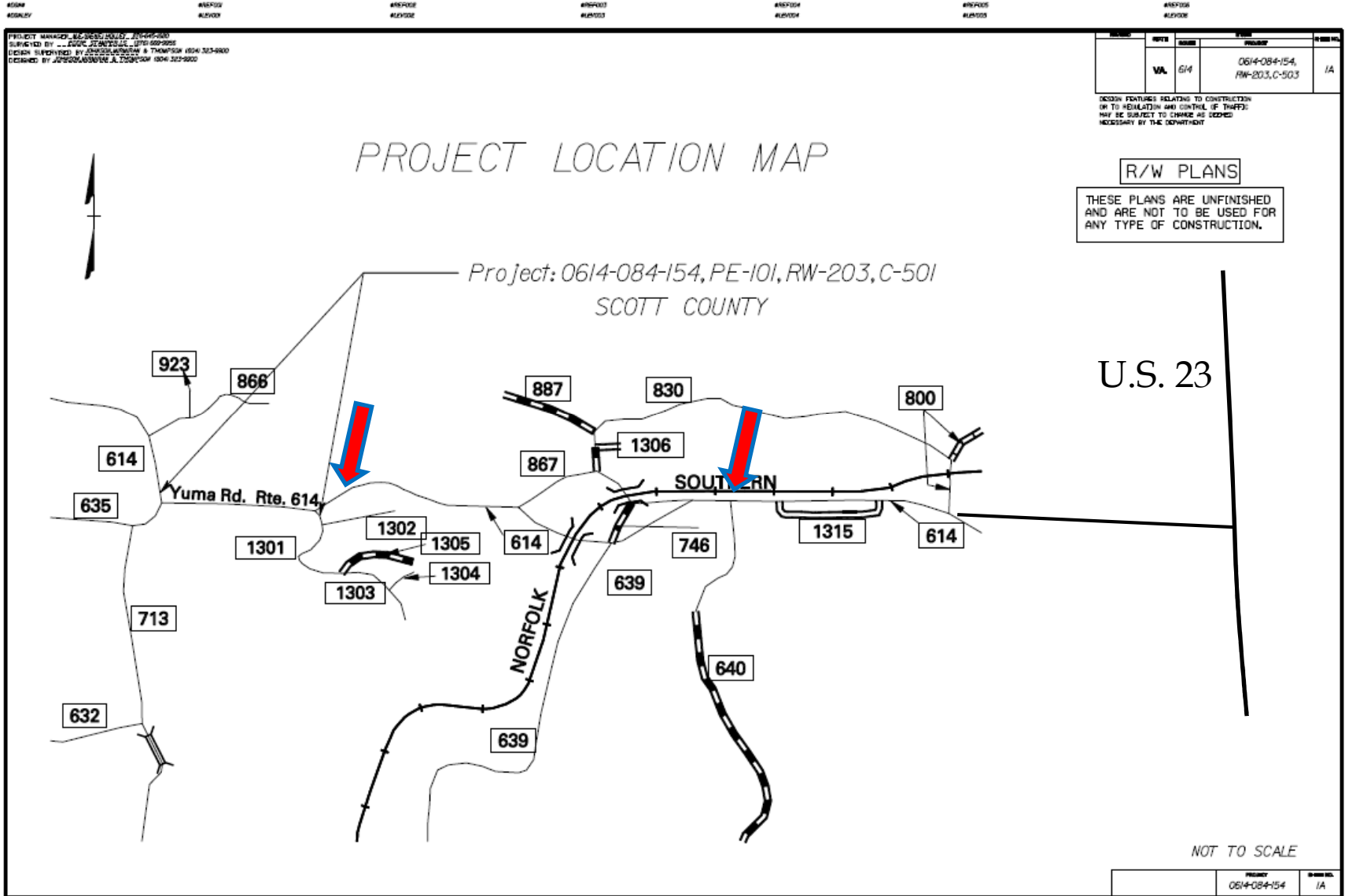
MPO Area Bikeway Master Plan



Scott County

Thank You ... CTB !!

Yuma Road - Phase III



Long-Range Projects

□ Yuma Road - Phase III

