

“ A MODEL OF COLLABORATION ”

Commonwealth Transportation Board
September 17, 2013

Doug Allen
Chief Executive Officer



A BETTER WAY. A BETTER LIFE.

VRE BY THE NUMBERS

- **IN DEMAND**
 - Almost **5 Million** Passengers
 - Peak capacity of **150 lane miles**
- **RELIABLE**
 - Over **95%** of Trains On Time
 - Consistent Trip Times
- **FISCAL RESPONSIBILITY**
 - **55%** of Operating Costs Paid by Passengers



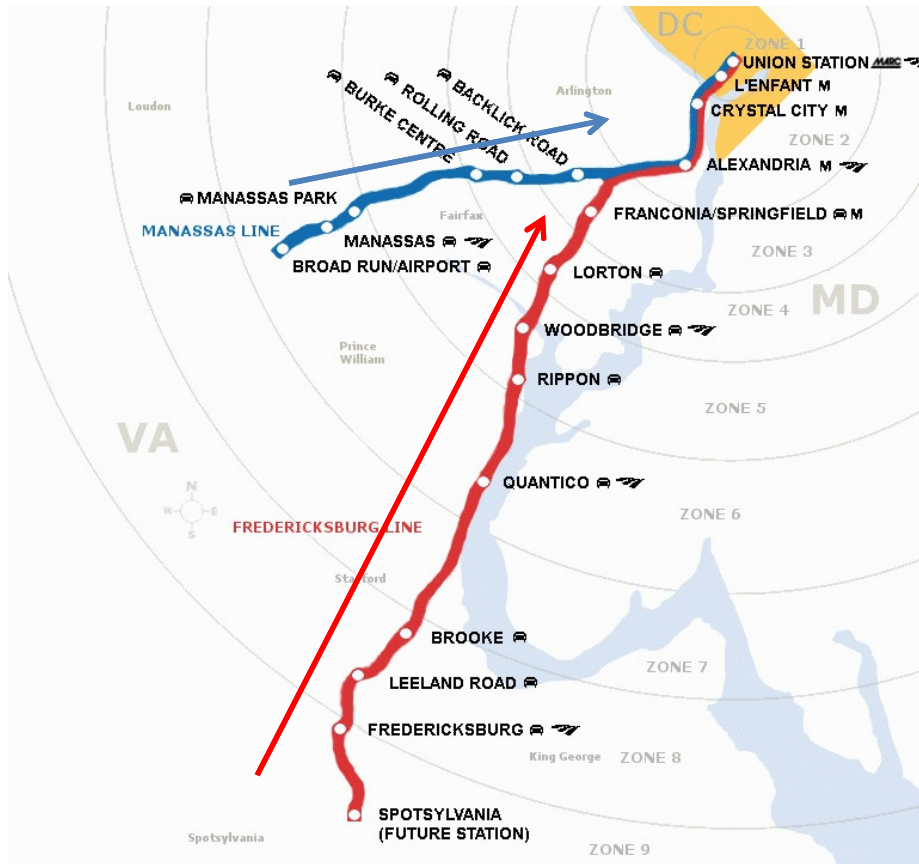
SERVING THE MAJOR CORRIDORS



- **Fredericksburg**
 - 54 miles (+8 more in 2014)
 - 84 minutes to Union Station
- **Manassas**
 - 35 miles
 - 45 minutes to Union Station



SERVING THE MAJOR CORRIDORS

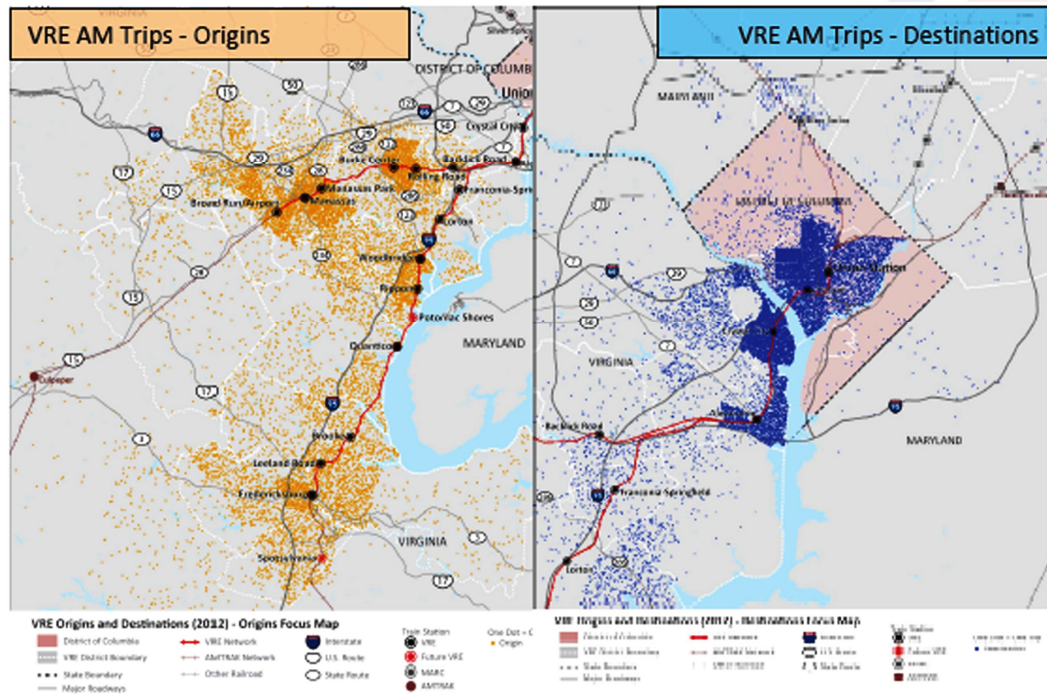


- **Fredericksburg**
 - 54 miles (+8 more in 2014)
 - 84 minutes to Union Station
 - **I-95**
- **Manassas**
 - 35 miles
 - 45 minutes to Union Station
 - **I-66**



A BETTER WAY. A BETTER LIFE.

COMMUTING PATTERNS



- Strong inbound demand
- Emerging outbound demand
- Growth areas
- Riders from 20% of Commonwealth



A BETTER WAY. A BETTER LIFE.

EXPANDING MOBILITY

- VRE connects with Metro at five stations
 - 22% of VRE riders complete trip on Metro
- VRE connects with local and regional buses
- VRE connects with MARC and Amtrak



A BETTER WAY. A BETTER LIFE.

DEMAND WILL GROW

- **Traditional Employment Centers**

- Arlington and Alexandria adding 127,000 jobs (40% increase)
- Fairfax adding 226,000 jobs (33% increase)
- DC adding 173,000 jobs (22% increase)

- **Emerging Centers**

- Quantico and Fort Belvoir
- Innovation Park near Manassas
- Potomac Shores
- Fredericksburg area



PREPARING FOR THE DEMAND

- **System Plan**
 - **Near-term solutions**
 - Increase capacity and frequency
 - **Medium-term solutions**
 - Expand to new markets
 - **Longer-term solutions**
 - Reverse commuting
 - Run through



WWW.VRE.ORG

THANK YOU



A BETTER WAY. A BETTER LIFE.