



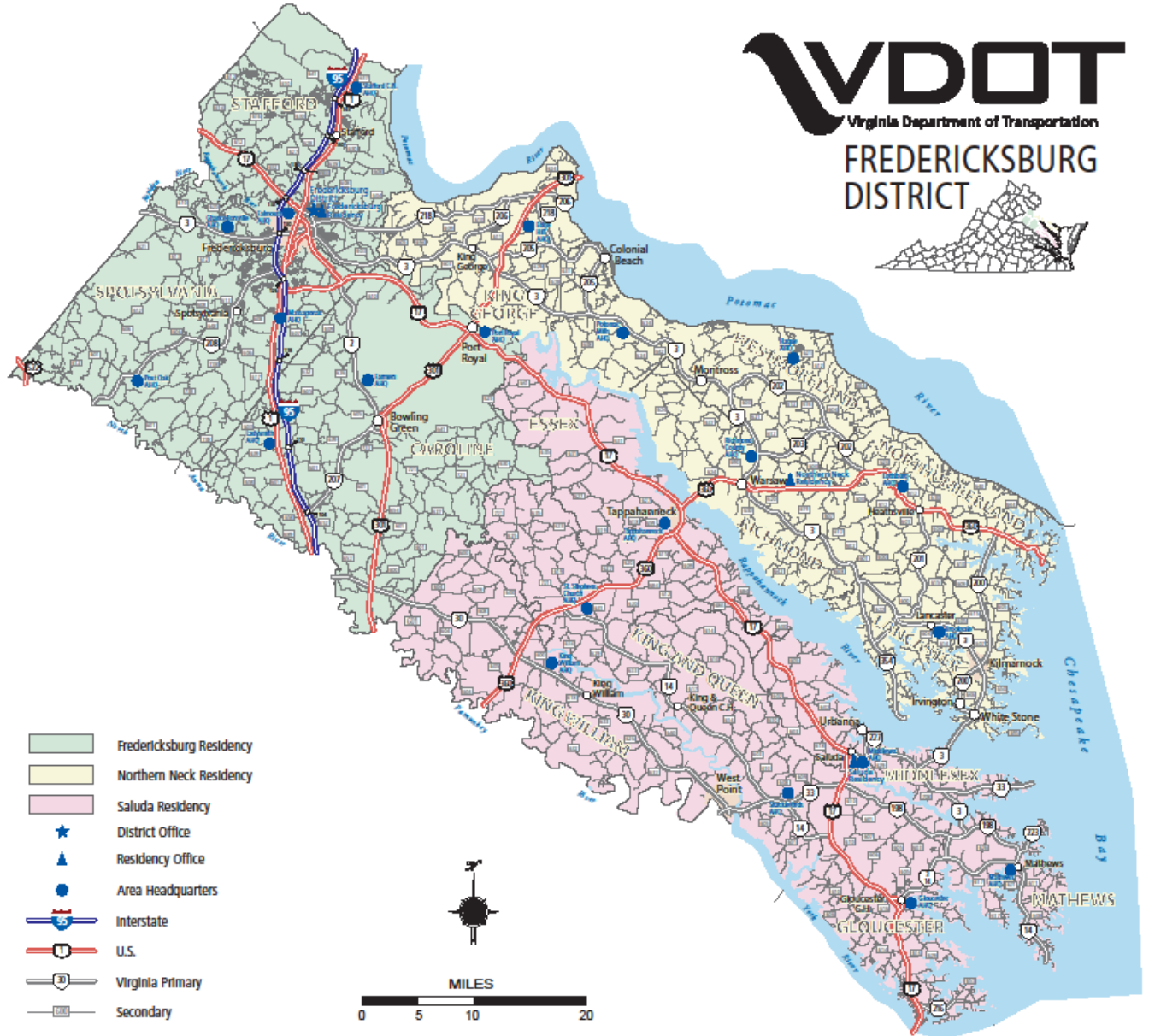
***Challenges and Opportunities in the Interstate 95 Corridor  
VDOT Fredericksburg District***

September 17, 2013

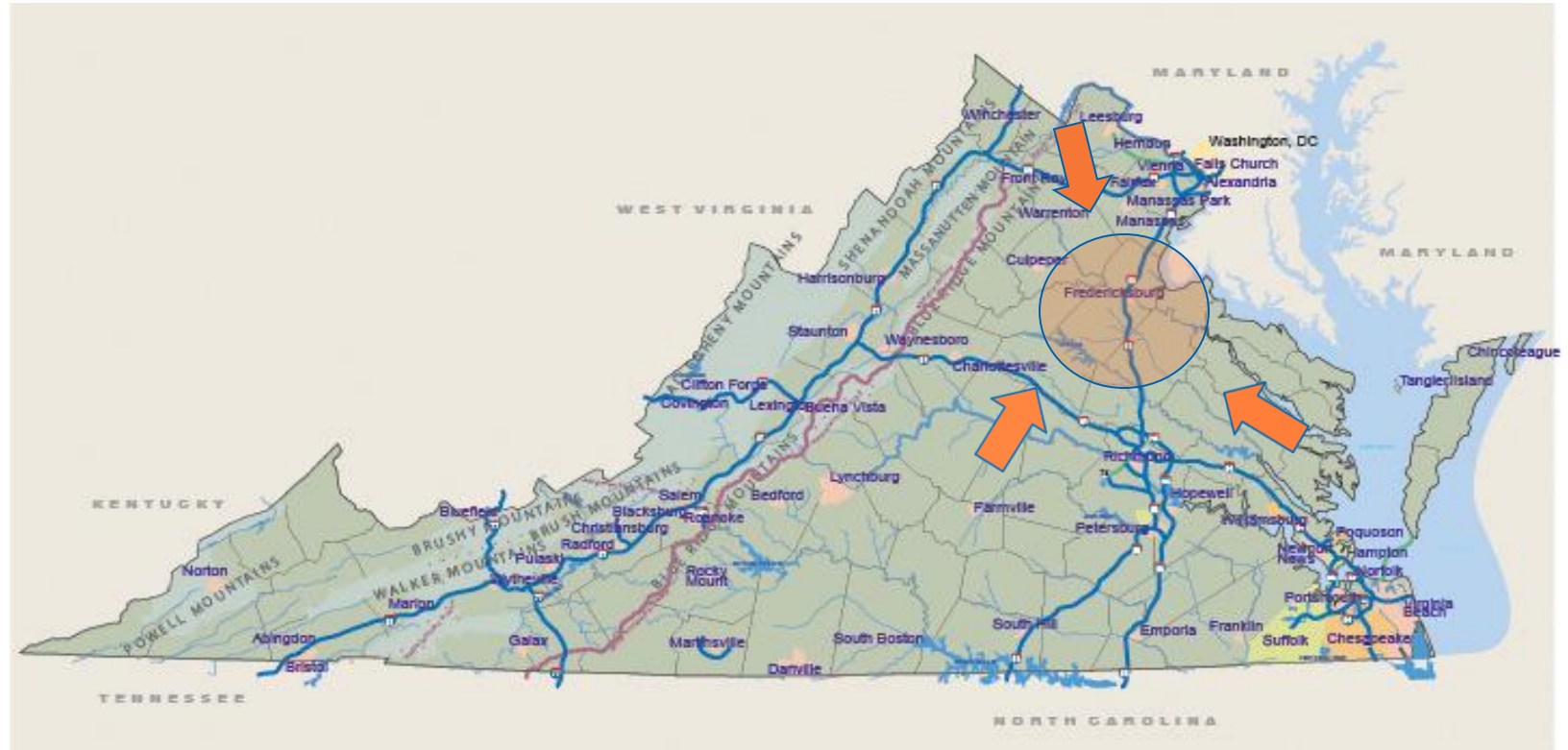
**Quintin D. Elliott**

VDOT Fredericksburg District Administrator

## FREDERICKSBURG DISTRICT



# All roads lead to Fredericksburg



- Improvements in 3 metropolitan areas push congestion north and south to Fredericksburg
- Few east-west routes
- No collector-distributor lanes

## Fredericksburg: A tale of (only) two routes

### Interstate 95

- Three lanes
- 144,000 vehicles a day between Route 17 in Stafford and Route 3
- Traffic inputs from busy connector roads
  - Route 3: 80,000 vehicles
  - Route 17: 55,000 vehicles (17 percent truck traffic)

### Route 1

- Signals
- Heavy Commercial and Residential Use
- Multiple Chokepoints
- Easily Overwhelmed
- Carries 51,000 vehicles per day at busiest section



*Looking north on Interstate 95 at Exit 143/Garrisonville in Stafford County*

## Home of the “Mega Commuter”

### Mega Commuters:

- *Travel 90 minutes or longer to work (each direction)*
- *Travel 50 miles or greater*

### Top 5 “Mega Commuter” Localities Flowing into Washington, D.C.

#### 1) *Spotsylvania County*

2) *Frederick County, MD*

3) *Baltimore County, MD*

#### 4) *Stafford County*

5) *Berkeley County, WV*



# I-95 CORRIDOR PROJECTS

## Approved: FY 2014-2019 Six-Year Improvement Program (SYIP)

- *Increase in Six-Year Program more than doubled the Fredericksburg District's program*
  - (\$180 million to \$449 million)
- *The plan targets our highest, and most critical, transportation priorities:*
  - **Paving: \$267 million**
  - **Bridge Rehabilitation and Replacement: \$35.7 million**



### *Current Pavement Conditions, Fredericksburg District*

**Interstate:** 100 percent of pavement meets or exceeds standards

**Primary:** 84 percent of pavement meets or exceeds standards

**Secondary:** 63 percent of pavement meets or exceeds standards



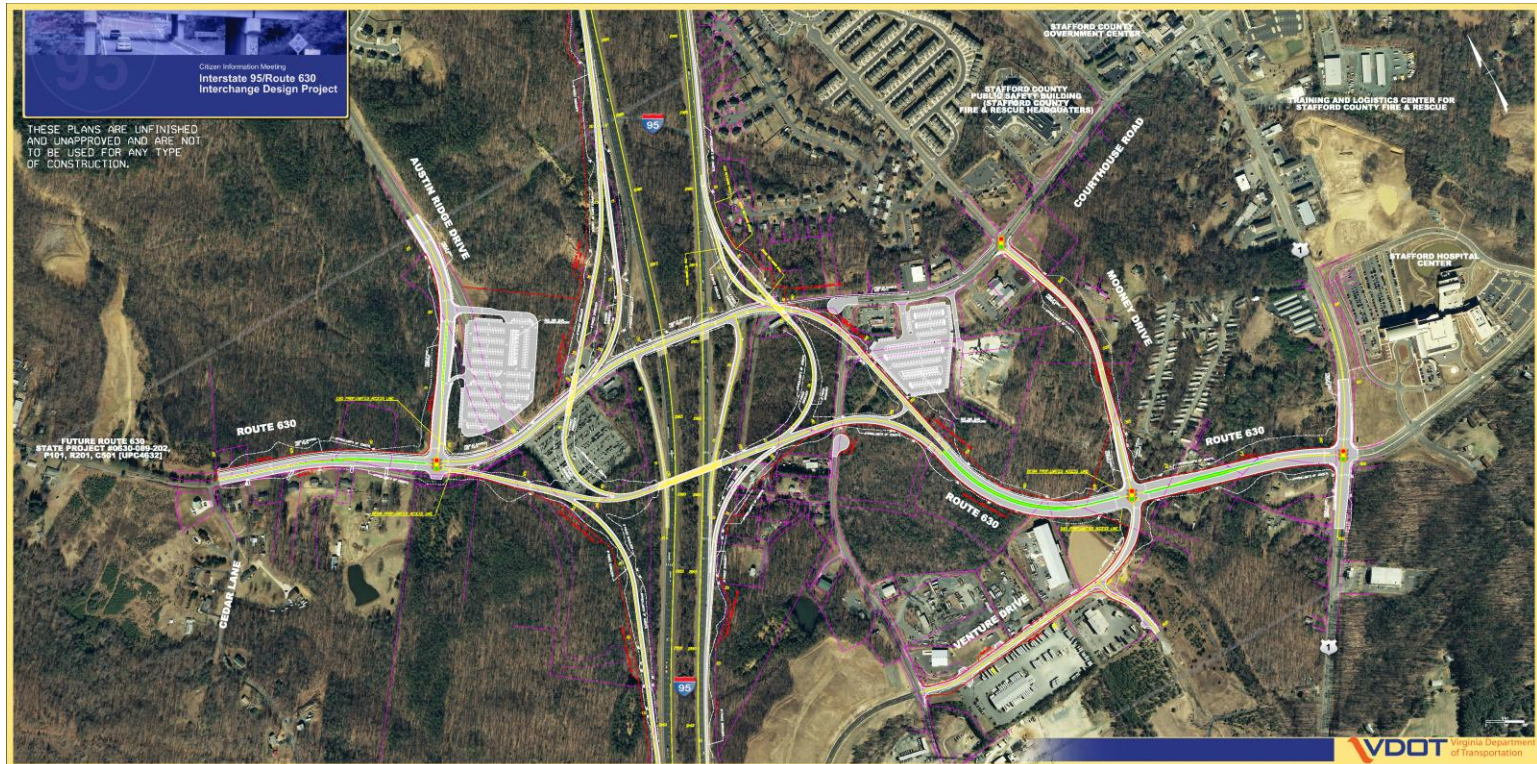
# What we are doing to help I-95 commuters

- **3,000+ Plus New Commuter Parking Spaces on I-95 Corridor**
  - **+1,000 at Staffordboro Boulevard (Route 610, Stafford)**
  - **+500 at Route 630 (Courthouse Road, Stafford)**
  - **+500 at Route 3 (Gordon Road, Spotsylvania)**
  - **+1,500 at Virginia Railway Express station (Spotsylvania)**



# Exit 143 to Exit 140: Garrisonville Road to Courthouse Road

- Interstate 95: 4th Lane Widening
  - Exit 143 to Exit 136 – Garrisonville Road to Centreport Parkway
  
- Interchange Project at Exit 140/Stafford

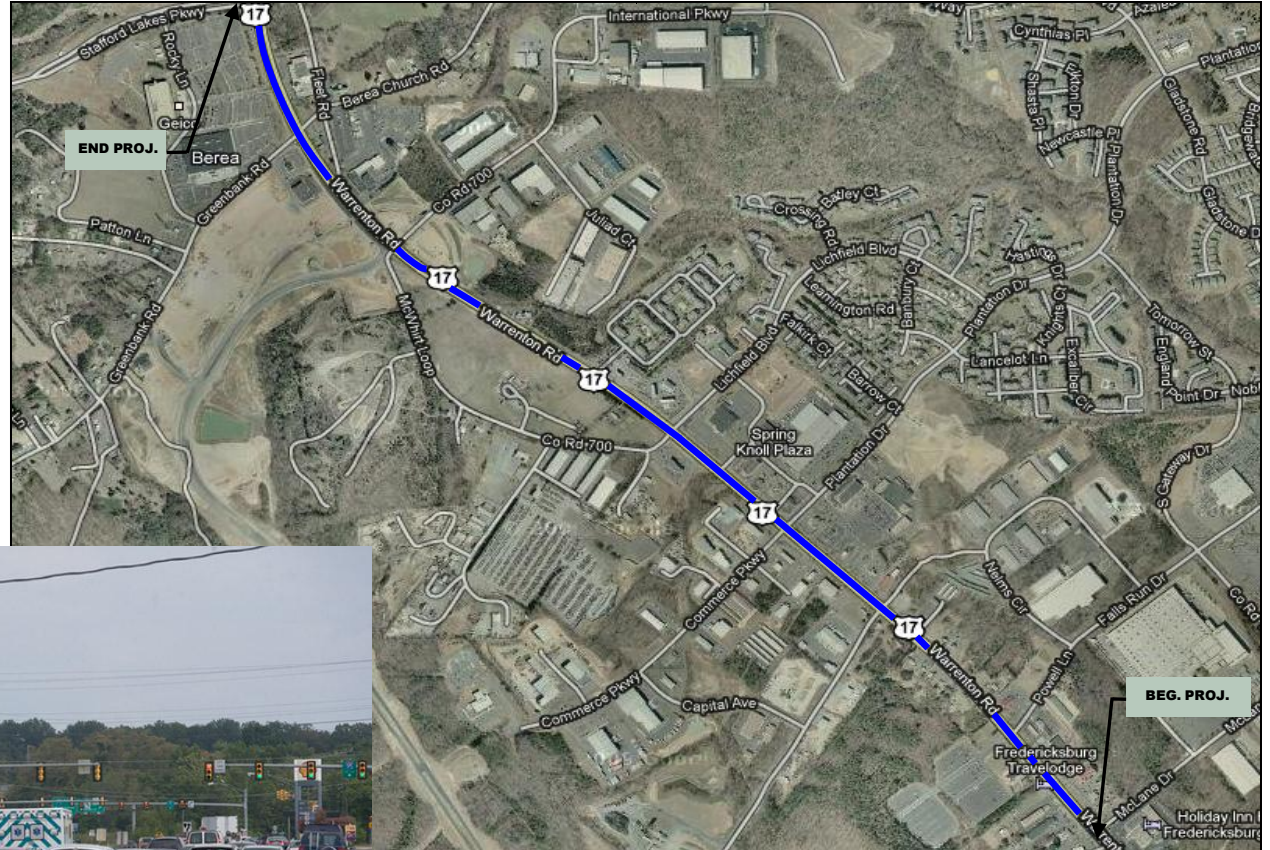


## Exit 133: Falmouth Intersection



***Solving a Route 1 Chokepoint: Intersection of Route 1, Route 17 Business and Route 218 (Butler Road) in Stafford***

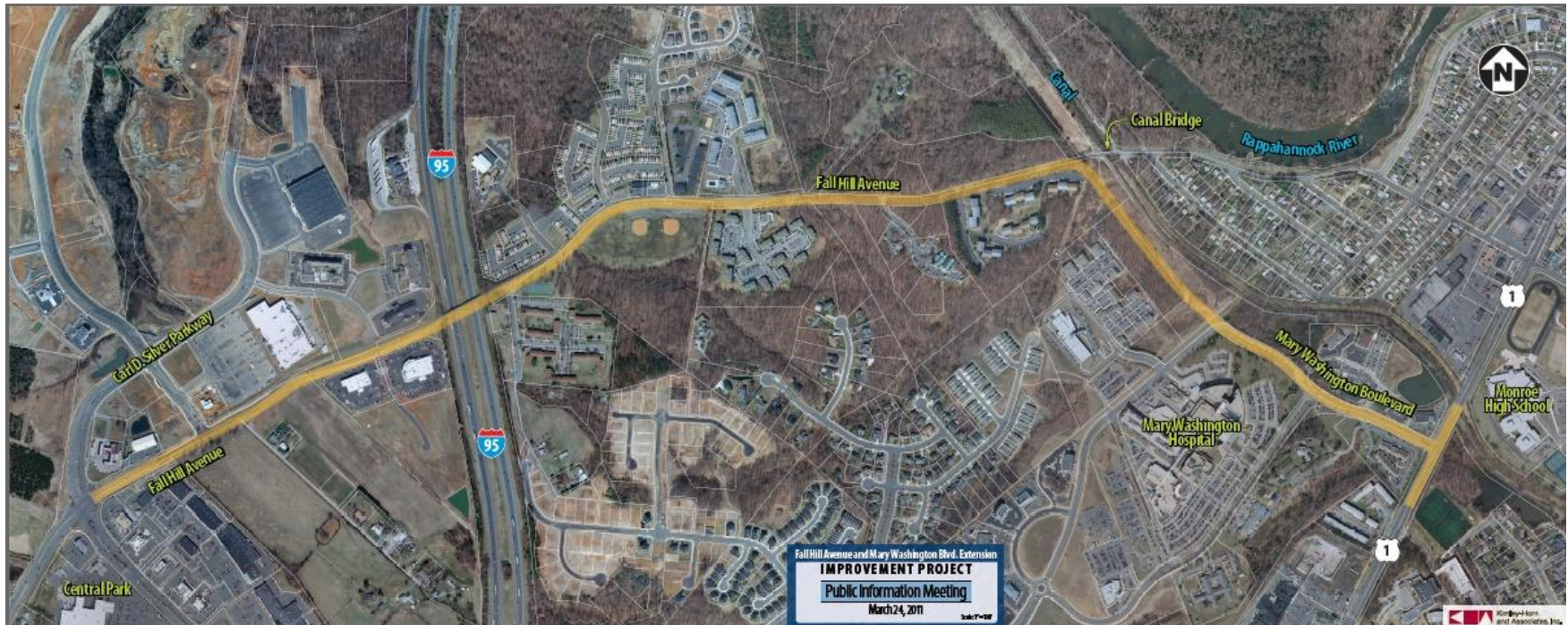
# Exit 133: Route 17 Widening



*Route 17 southbound traffic in Stafford approaching I-95 merge*

# Exit 133 to Exit 130: Route 17 to Fredericksburg

- Rappahannock River Crossing
  - Collector-distributor lanes divide local, interstate traffic
  
- Fall Hill Avenue Overpass and Widening
  - Connector road in City of Fredericksburg



# Exit 133 to Exit 130: Route 17 to Fredericksburg



## ➤ Rappahannock River Crossing

- New crossing, collector-distributor lanes would divide local, interstate traffic

# Questions?

