

Remarks before the Commonwealth Transportation Board

Richard Sarles
General Manager and CEO
WMATA

March 19, 2014

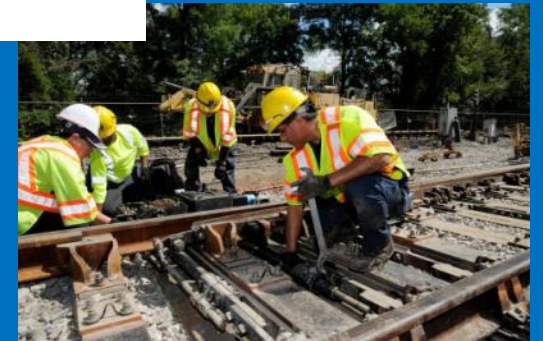
strategic plan 2013-2025

Rebuilding the Foundation

Metro Forward: \$5 billion, six-year investment program



M forward
metro® a better ride for you



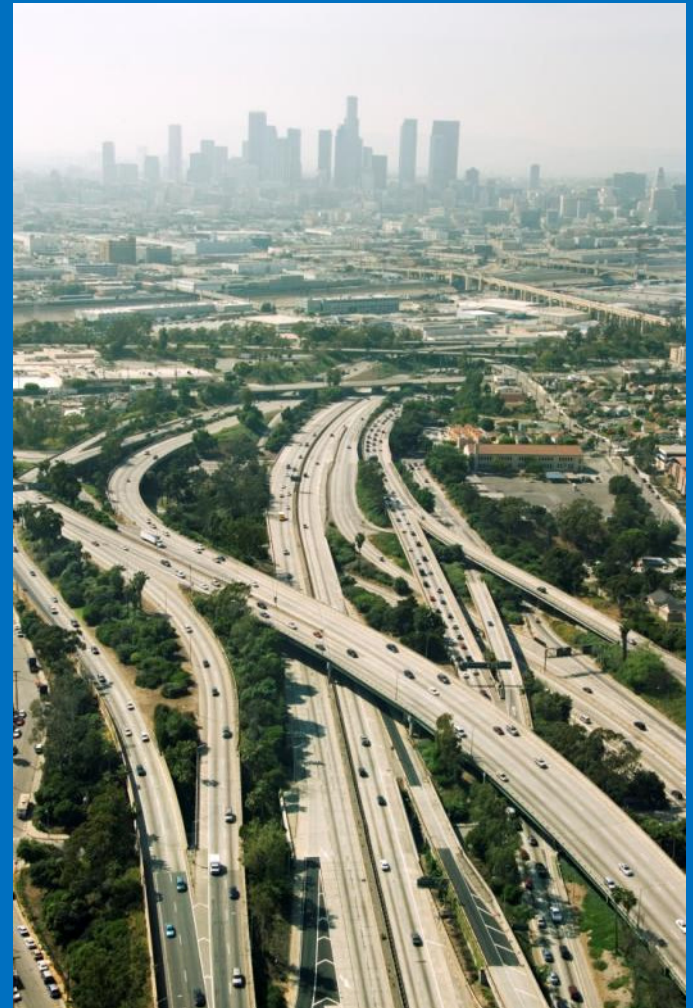
Keeps the Region Working

- 54% of region's two million jobs within ½ mile of Metro
- VA: \$23M in additional property tax revenue from Metrorail-adjacent property
- VA costs without Metro: \$1.3B on roads and \$358M on parking



What If There Were No Metro?

- More cars on the road
- New beltways
- More lanes for river crossings
- More parking spaces
- More congestion
- More money spent on auto expenses
- Poorer air quality



What If We Do Nothing More?

- Threats to safety
- More delays, service disruptions and crowded conditions
- More congested highways as regional growth will outpace Metro investment
- Reduced overall quality of life
- Harms region's competitive advantage –talent, jobs, and investment dollars



Need to Plan

It's About Choices

- Rail system core already strained
- Standing room only: rail, bus, stations
- No funding for expansion beyond Silver Line
- Region facing unprecedented growth
 - 30% increase in population
 - 39% increase in employment



Momentum Delivers Metro 2025



Longest possible trains to provide more seats

More cars + power improvements and maintenance facilities to operate all 8-car trains during rush hours



Improved flow through major stations

More escalators, stairs and mezzanine space added at transfer Stations to accommodate more riders more comfortably



More reliable, faster bus service

Bus-only lanes along major corridors, additional limited-stop and express service, and more buses will upgrade bus service

Momentum Delivers Metro 2025



More timely, reliable customer information

Metro will provide a network for region-wide transit information and fare collection, giving customers information when and how they want it



Improve reliability of rail system

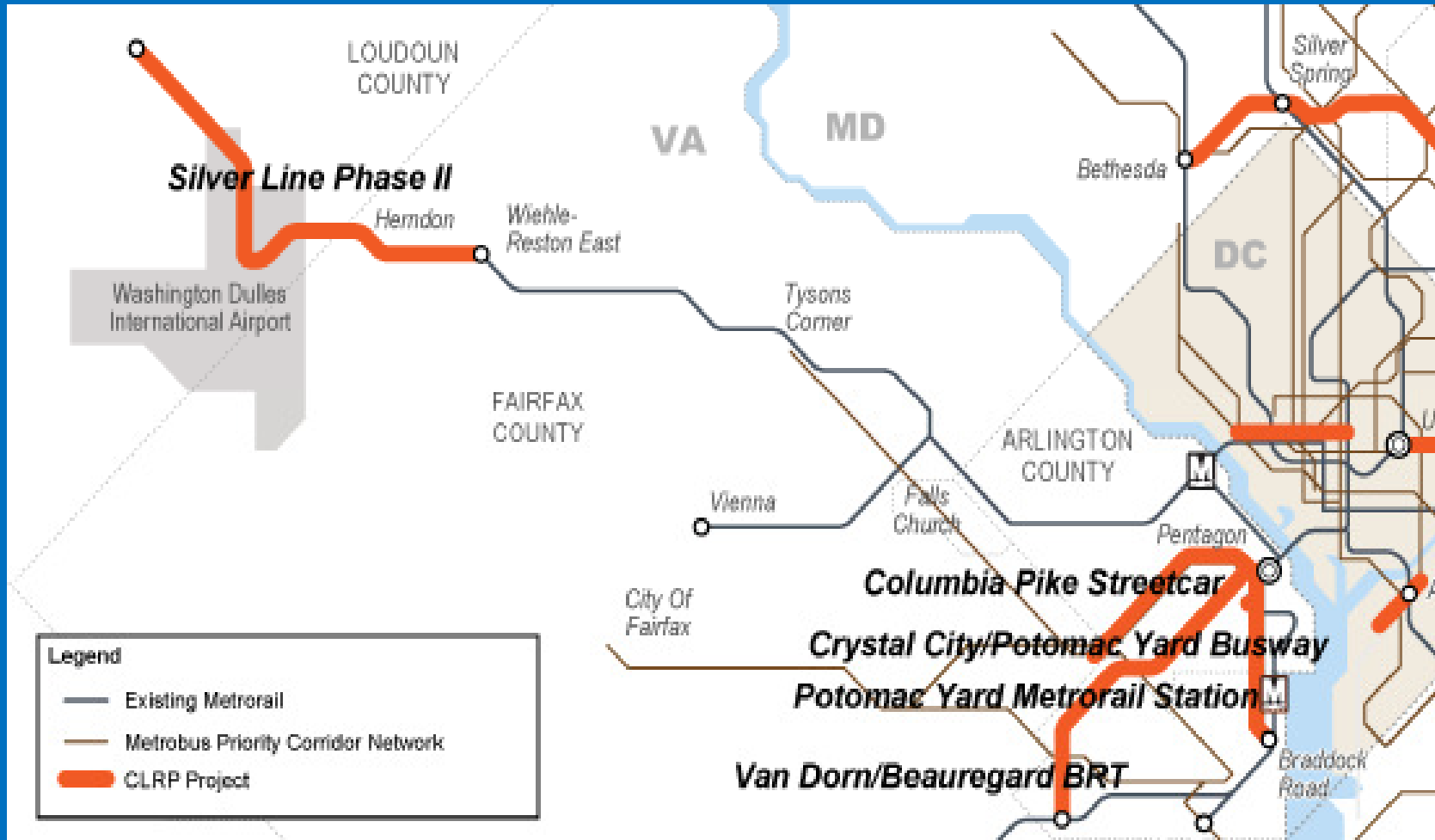
New connections will allow trains to more easily be routed around delays and get back on-time more quickly



Increase rush hour service on the Blue Line

New track connections or a new station at Rosslyn will allow for more frequent Blue Line service during rush hours

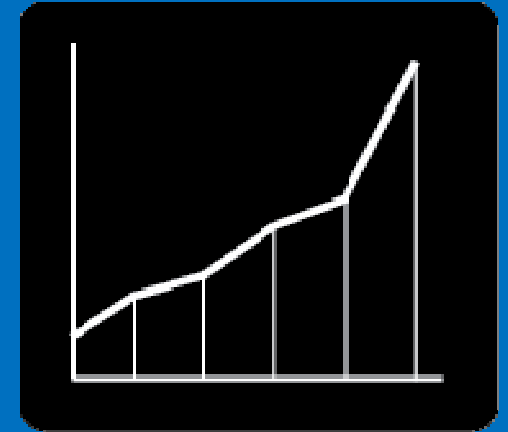
Metro 2025 Supports VA Transit Projects



Metro 2025 Supports VA's Economy

Northern Virginia:

- Since 2000, population up 15%
- By 2040, projected influx of over 415,000 jobs (42% increase)
- Metro 2025 critical to handle growth



Metro 2025 Will Improve Capacity

To match Metro 2025 capacity:



Metro 2025 Will Relieve Crowding

- Over 18,000 Virginians on uncomfortably crowded rail cars daily
- Number doubles to nearly 40,000 by 2025
- Running all 8-car trains at rush hour:
 - Cuts rider crowding from 26% to 9%



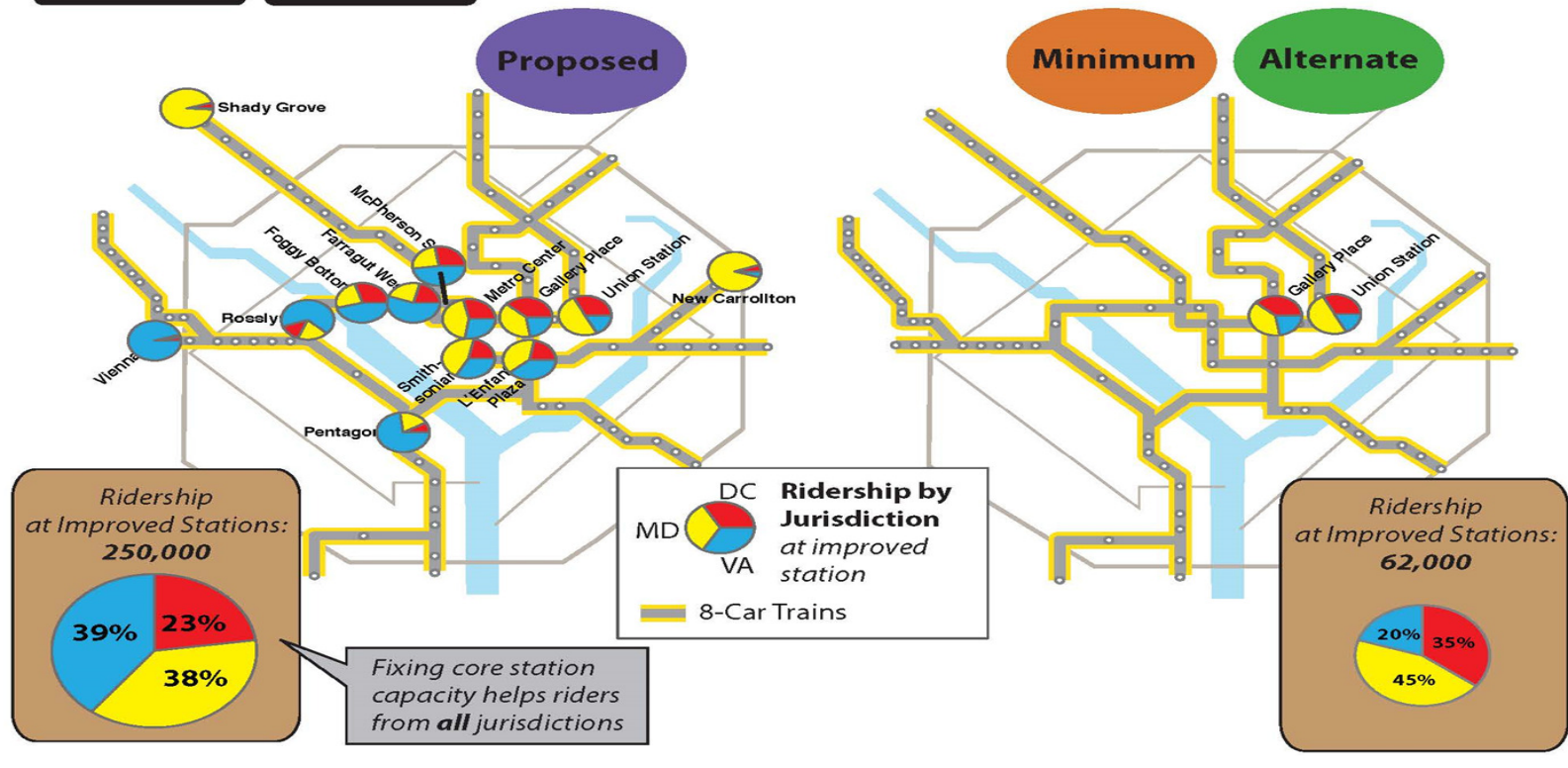
Metro 2025 Investment Scenarios

(in millions)	FY15-20		
	Proposed Investment	Alternate Investment	Minimum Investment
8-Car Trains & Station Capacity	\$2,014	\$1,476	\$1,476
Bus PCN and Fleet Expansion	\$536	\$173	\$ -
Other M25 Initiatives	\$307	\$62	\$ -
Total	\$2,857	\$1,711	\$1,476

Fixing Core Capacity Helps VA Riders



Eight-Car Trains and Station Capacity

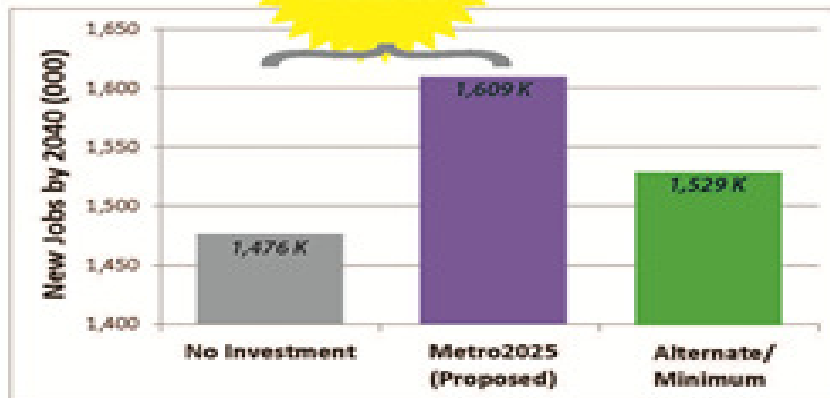


Metro 2025 Will Help the Economy



Without full Metro 2025, congestion would hurt our economy

**133 K
Jobs!**



\$130 million

Annual benefit of having fewer cars on the road because of Metro 2025,

9%

More new jobs due to congestion relief with Metro 2025

18

Equivalent *lanes of highway* into our regional core needed to match the effect from going "all 8s" in Metro 2025

Thank you