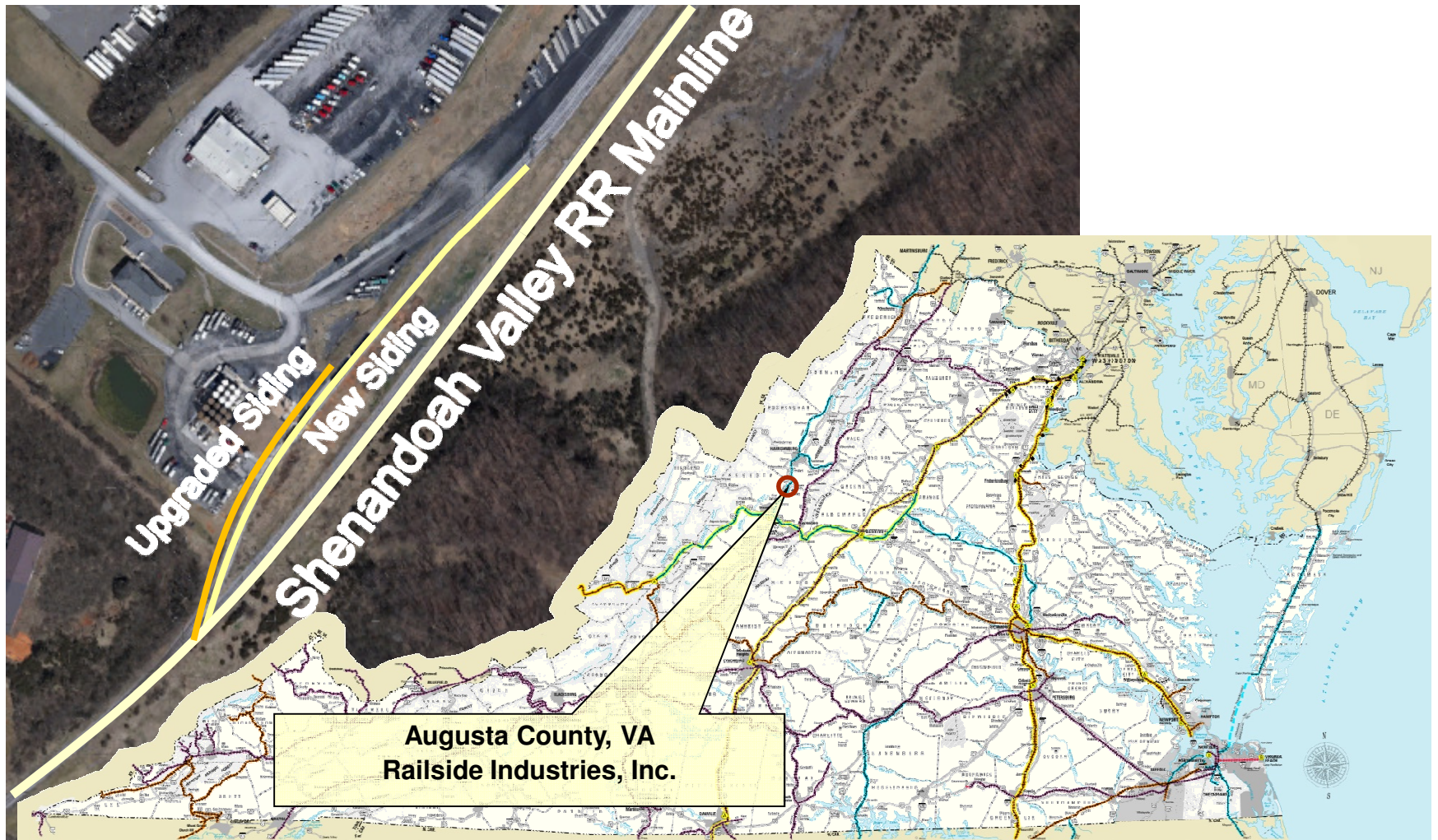


Rail Industrial Access Program Application Briefing

**Railside Industries, Inc.
Augusta County, VA**

**Kevin B. Page
Chief Operating Officer**

Project Location



May 14, 2014

Project Summary

- ❑ Application for \$225,000
 - Upgrade 700 feet of rail with 127lb rail
 - Install additional 1,100 feet of 127lb rail for a new siding
 - Install a crossover between sidings
 - Served by Shenandoah Valley Railroad

- ❑ Application details:
 - 250 additional railcars annually, 1,200 existing cars per year
 - \$1.5 Million total estimated project investment
 - \$450,000 estimated cost of rail construction
 - 2 new jobs associated with this expansion

- ❑ Application scores 59 of 100 points.
- ❑ Scores greater than 50 are referred to the CTB for consideration.

Applicant Profile

- ❑ RAILSIDE INDUSTRIES, INC. IS THE REAL ESTATE DEVELOPMENT COMPANY THAT BUILDS AND LEASES FACILITIES TO HOUFF'S FEED AND FERTILIZER CO., INC.
- ❑ THIS RAIL EXPANSION WILL CREATE AN EXPORT MARKET OPPORTUNITY FOR SOYBEAN PRODUCTION BY FARMERS IN THE SHENANDOAH VALLEY.
- ❑ IMPROVEMENTS WILL UPGRADE RAIL TO 127LBS AND COMPLETE EXISTING SPURS TO CREATE SIDE TRACKS. THE ADDITIONAL CAPACITY WILL ALSO IMPROVE RAILROAD OPERATIONS AND AVOID BLOCKING STATE ROAD 256.
- ❑ THIS PROJECT CREATES BUSINESS OPPORTUNITY IN THE SHENANDOAH VALLEY AND GROWS BUSINESS ON A SHORTLINE RAILROAD OPERATION.

Requested Project Funding

Applicant	Fiscal Year of Allocation	Recommended for CTB Allocation	Local Match (Minimum)
Railside Industries, Inc.	2014	\$225,000	\$0

- ❑ A grantee match is required for amounts above \$300,000
- ❑ Total capital investments in the facility expansion are estimated at \$1.5 Million.
- ❑ Total rail infrastructure costs are estimated at \$450,000.



www.drpt.virginia.gov

drptpr@drpt.virginia.gov

804-786-4440