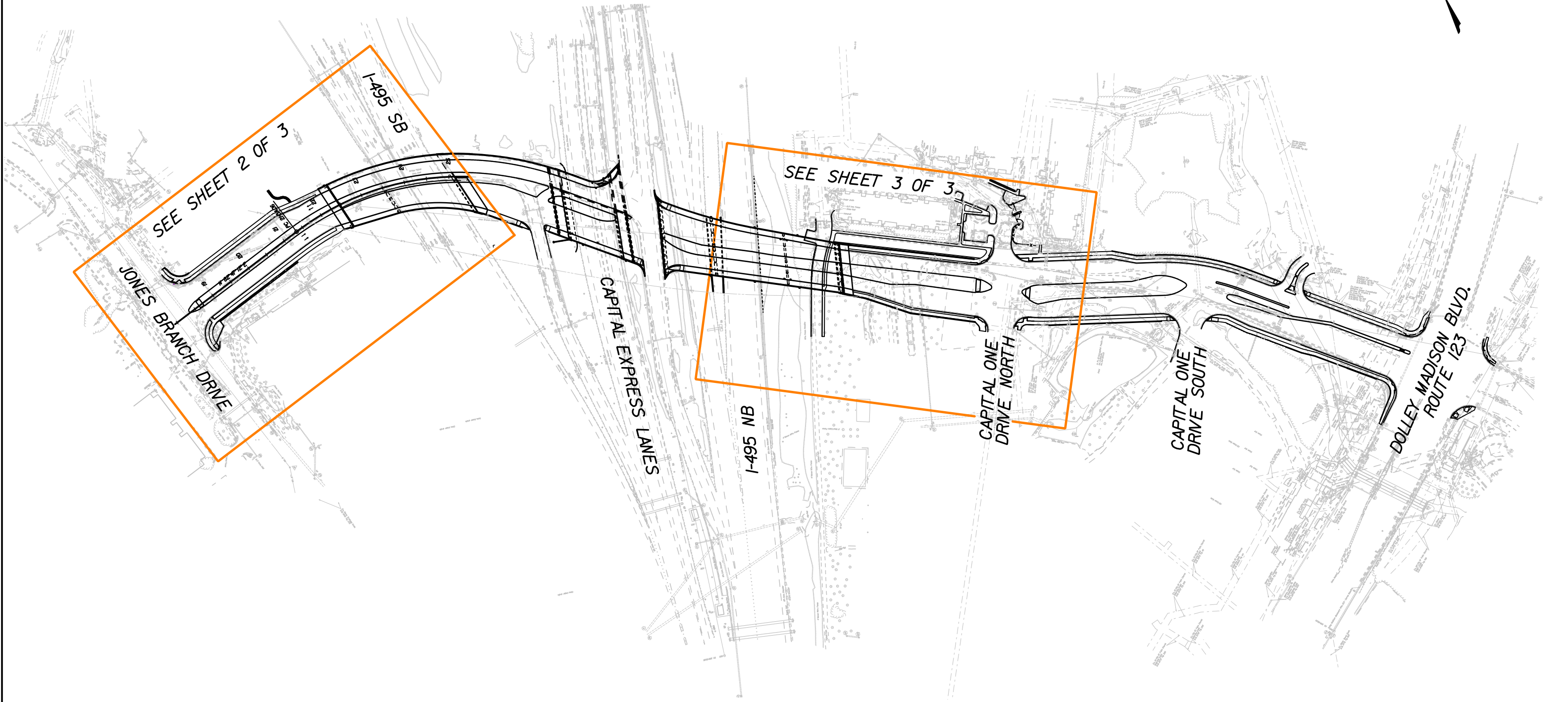
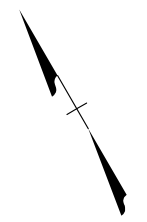


# LOCATION MAP

Fairfax County, Tysons

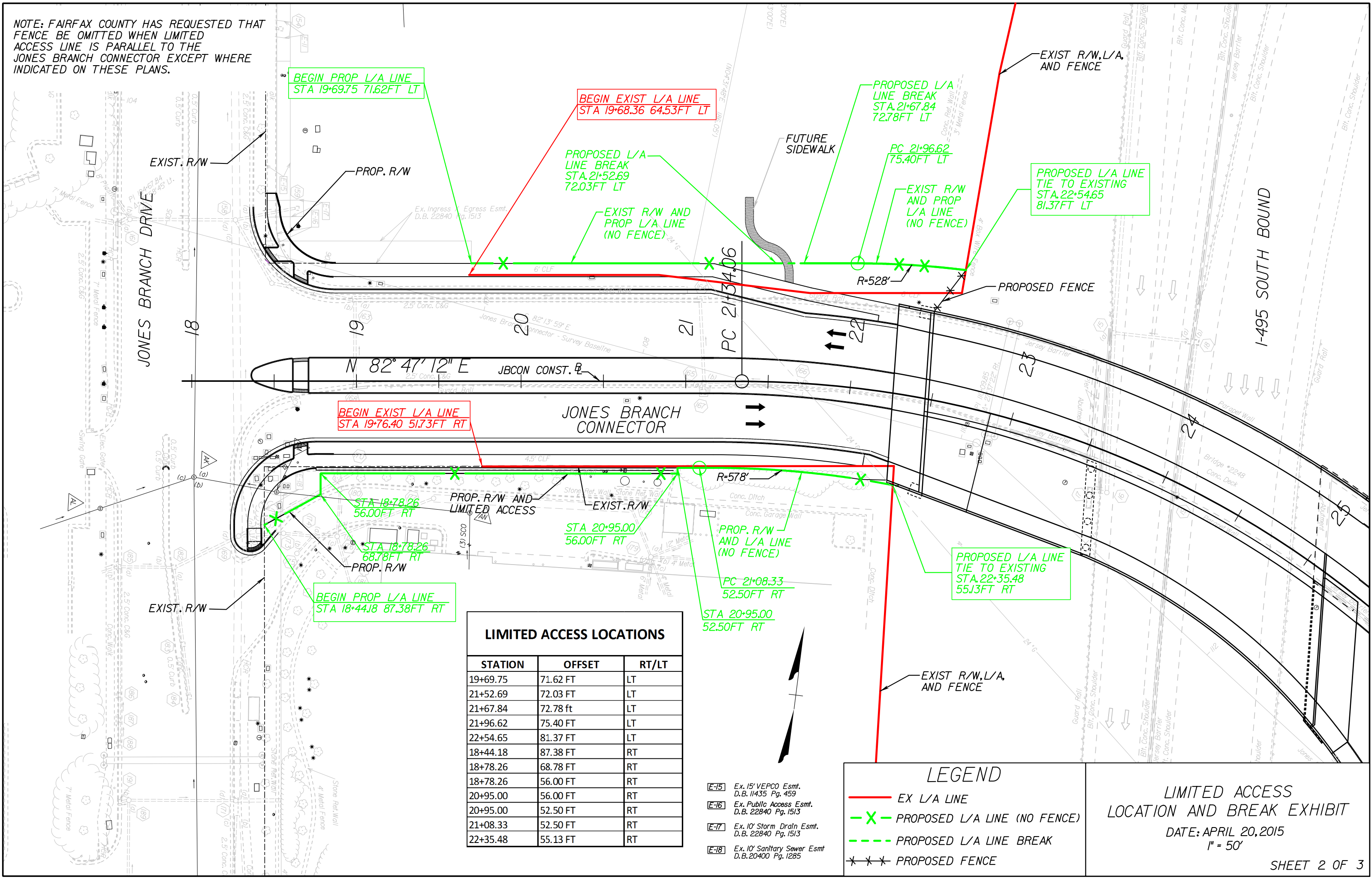


|                       |
|-----------------------|
| UPC: 103907           |
| PROJECT: 8102-029-065 |
| DATE: 3/28/2015       |
| SCALE: 1" = 2500'     |



JONES BRANCH CONNECTOR  
LOCATION EXHIBIT  
DATE: APRIL 3, 2015  
NOT TO SCALE

NOTE: FAIRFAX COUNTY HAS REQUESTED THAT FENCE BE OMITTED WHEN LIMITED ACCESS LINE IS PARALLEL TO THE JONES BRANCH CONNECTOR EXCEPT WHERE INDICATED ON THESE PLANS.



BEGIN EXIST L/A LINE  
STA 19+76.40 51.73FT RT

BEGIN PROP L/A LINE  
STA 19+69.75 71.62FT LT

BEGIN EXIST L/A LINE  
STA 19+68.36 64.53FT LT

PROPOSED L/A  
LINE BREAK  
STA. 21+52.69  
72.03FT LT

PROPOSED L/A  
LINE BREAK  
STA. 21+67.84  
72.78FT LT

PC 21+96.62  
75.40FT LT

PROPOSED L/A LINE  
TIE TO EXISTING  
STA. 22+54.65  
81.37FT LT

STA 18+78.26  
56.00FT RT

STA 18+78.26  
68.78FT RT

BEGIN PROP L/A LINE  
STA 18+44.18 87.38FT RT

STA 20+95.00  
56.00FT RT

PROP. R/W  
AND L/A LINE  
(NO FENCE)

PC 21+08.33  
52.50FT RT

STA 20+95.00  
52.50FT RT

PROPOSED L/A LINE  
TIE TO EXISTING  
STA. 22+35.48  
55.13FT RT

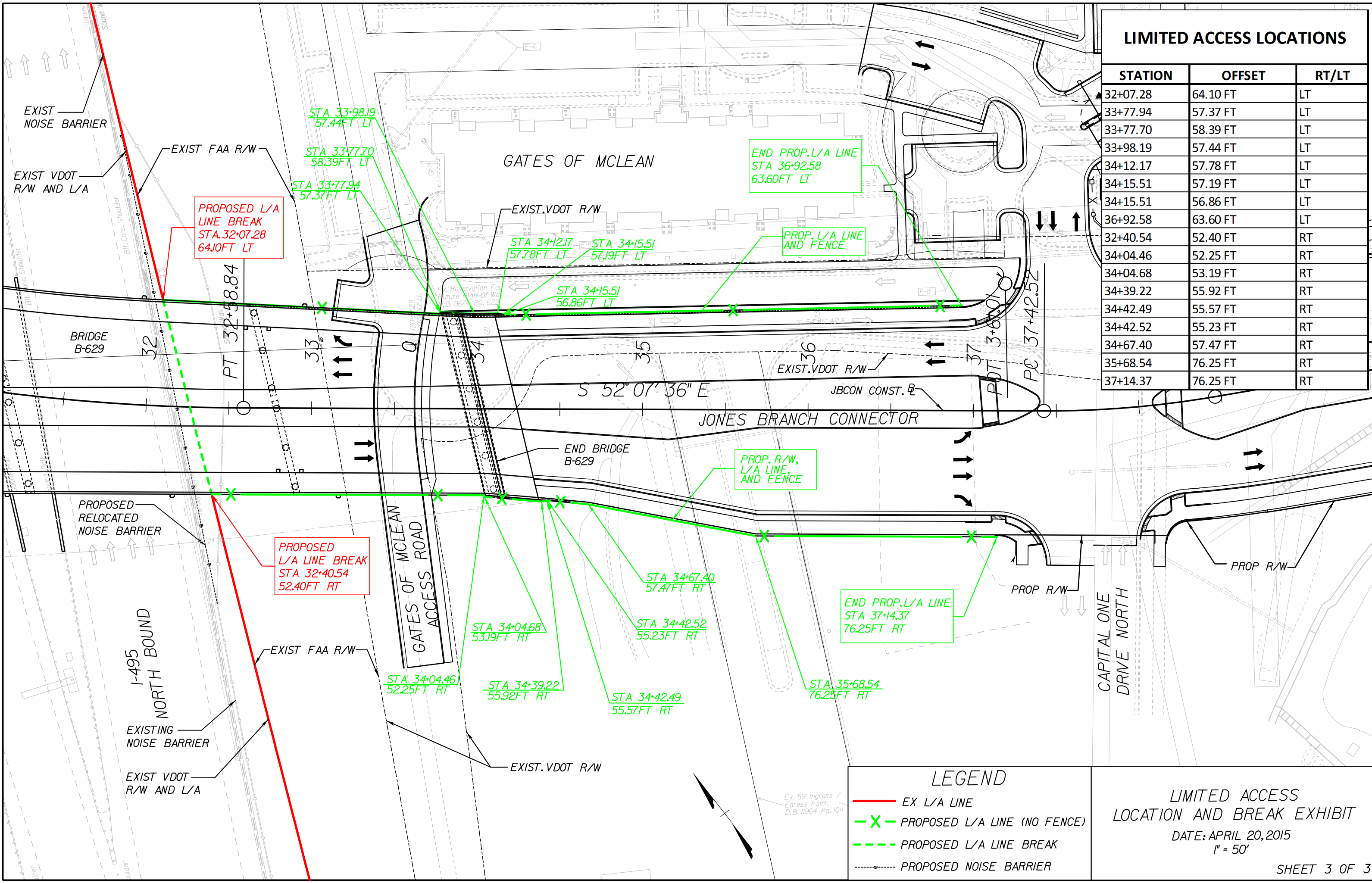
| LIMITED ACCESS LOCATIONS |          |       |
|--------------------------|----------|-------|
| STATION                  | OFFSET   | RT/LT |
| 19+69.75                 | 71.62 FT | LT    |
| 21+52.69                 | 72.03 FT | LT    |
| 21+67.84                 | 72.78 FT | LT    |
| 21+96.62                 | 75.40 FT | LT    |
| 22+54.65                 | 81.37 FT | LT    |
| 18+44.18                 | 87.38 FT | RT    |
| 18+78.26                 | 68.78 FT | RT    |
| 18+78.26                 | 56.00 FT | RT    |
| 20+95.00                 | 56.00 FT | RT    |
| 20+95.00                 | 52.50 FT | RT    |
| 21+08.33                 | 52.50 FT | RT    |
| 22+35.48                 | 55.13 FT | RT    |

**LEGEND**

- EX L/A LINE
- X - PROPOSED L/A LINE (NO FENCE)
- - - PROPOSED L/A LINE BREAK
- \* \* \* PROPOSED FENCE

LIMITED ACCESS  
LOCATION AND BREAK EXHIBIT  
DATE: APRIL 20, 2015  
1" = 50'





| LIMITED ACCESS LOCATIONS |          |       |
|--------------------------|----------|-------|
| STATION                  | OFFSET   | RT/LT |
| 32+07.28                 | 64.10 FT | LT    |
| 33+77.94                 | 57.37 FT | LT    |
| 33+77.70                 | 58.39 FT | LT    |
| 33+98.19                 | 57.44 FT | LT    |
| 34+12.17                 | 57.78 FT | LT    |
| 34+15.51                 | 57.19 FT | LT    |
| 34+15.51                 | 56.86 FT | LT    |
| 36+92.58                 | 63.60 FT | LT    |
| 32+40.54                 | 52.40 FT | RT    |
| 34+04.46                 | 52.25 FT | RT    |
| 34+04.68                 | 53.19 FT | RT    |
| 34+39.22                 | 55.92 FT | RT    |
| 34+42.49                 | 55.57 FT | RT    |
| 34+42.52                 | 55.23 FT | RT    |
| 34+67.40                 | 57.47 FT | RT    |
| 35+68.54                 | 76.25 FT | RT    |
| 37+14.37                 | 76.25 FT | RT    |

PROPOSED L/A LINE BREAK  
STA. 32+07.28  
64.10FT LT

PROPOSED L/A LINE BREAK  
STA 32+40.54  
52.40FT RT

END PROP. L/A LINE  
STA 36+92.58  
63.60FT LT

END PROP. L/A LINE  
STA 37+14.37  
76.25FT RT

**LEGEND**

- EX L/A LINE
- X- PROPOSED L/A LINE (NO FENCE)
- - - PROPOSED L/A LINE BREAK
- - - - PROPOSED NOISE BARRIER

LIMITED ACCESS LOCATION AND BREAK EXHIBIT  
DATE: APRIL 20, 2015  
1" = 50'