



Interstate 95/Rappahannock River Crossing Study Environmental Assessment

Commonwealth Transportation Board Briefing


September 15, 2015
Angel Deem
Environmental Division Director

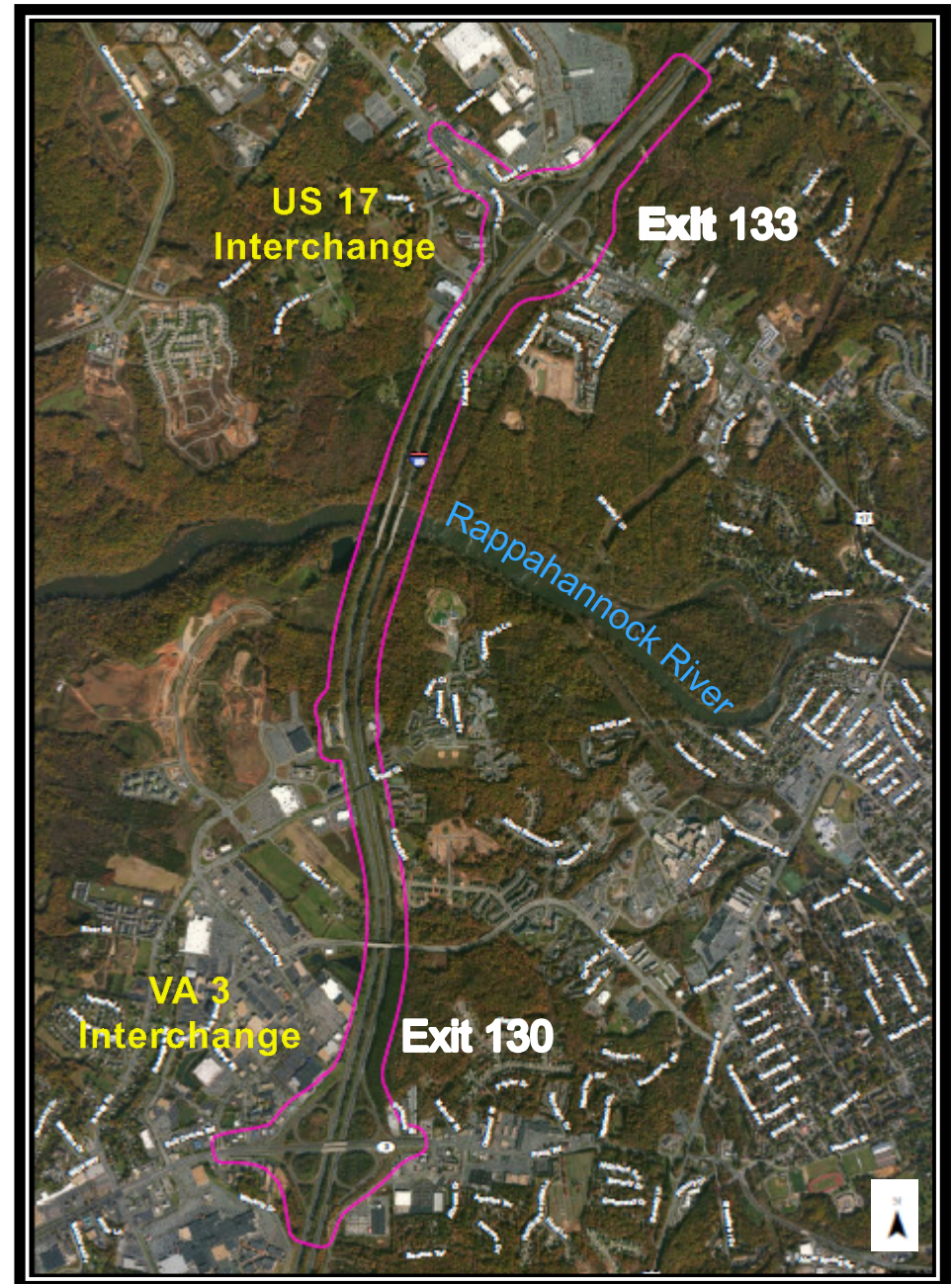


Study Area

I-95 Rappahannock River Crossing

VDOT Projects: 0095-111-259, P101; UPC 101595
0095-111-270, P101; UPC 105510

 Planning Level Environmental Assessment Study Area



Project History

2000-
2002

Multiple Studies identify Improvements to I-95 to Relieve Congestion

May
2011

RRC Project requested by the City of Fredericksburg

April
2013

RRC Project included in the FAMPO 2040 Long Range Transportation Plan

June
2013

Interchange Modification Report is initiated

March
2015

I-95 Interchange Modification Report is completed by VDOT

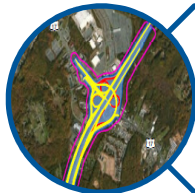
Purpose and Need



Reduce Congestion



Improve Safety



Improve Accessibility and
Mobility



Accommodate current and
planned growth

NEPA Study Status

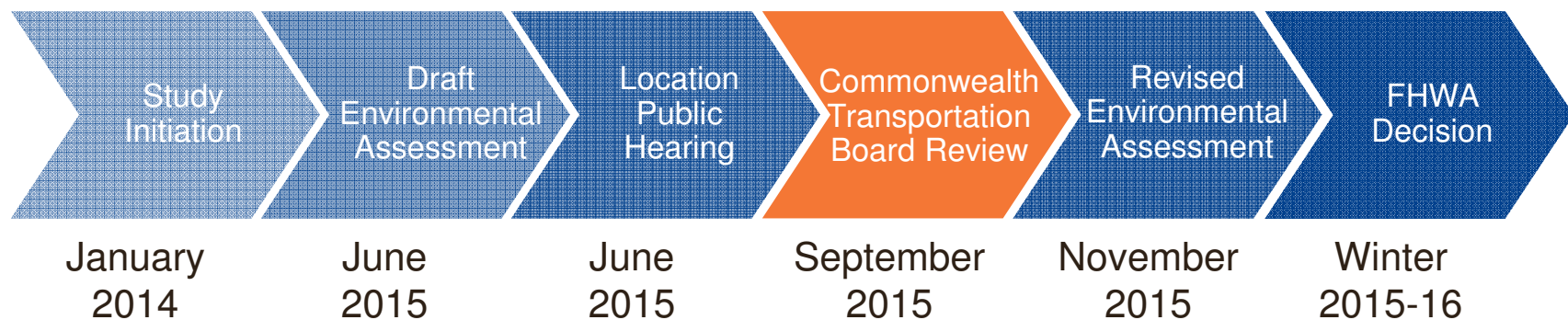
January 27, 2014 – Initiated study

Draft Environmental Assessment (EA) – June 8, 2015

Available for public review and comment through July 9, 2015

Location Public Hearing – June 24, 2015

Findings of Environmental Assessment



Alternatives

Build

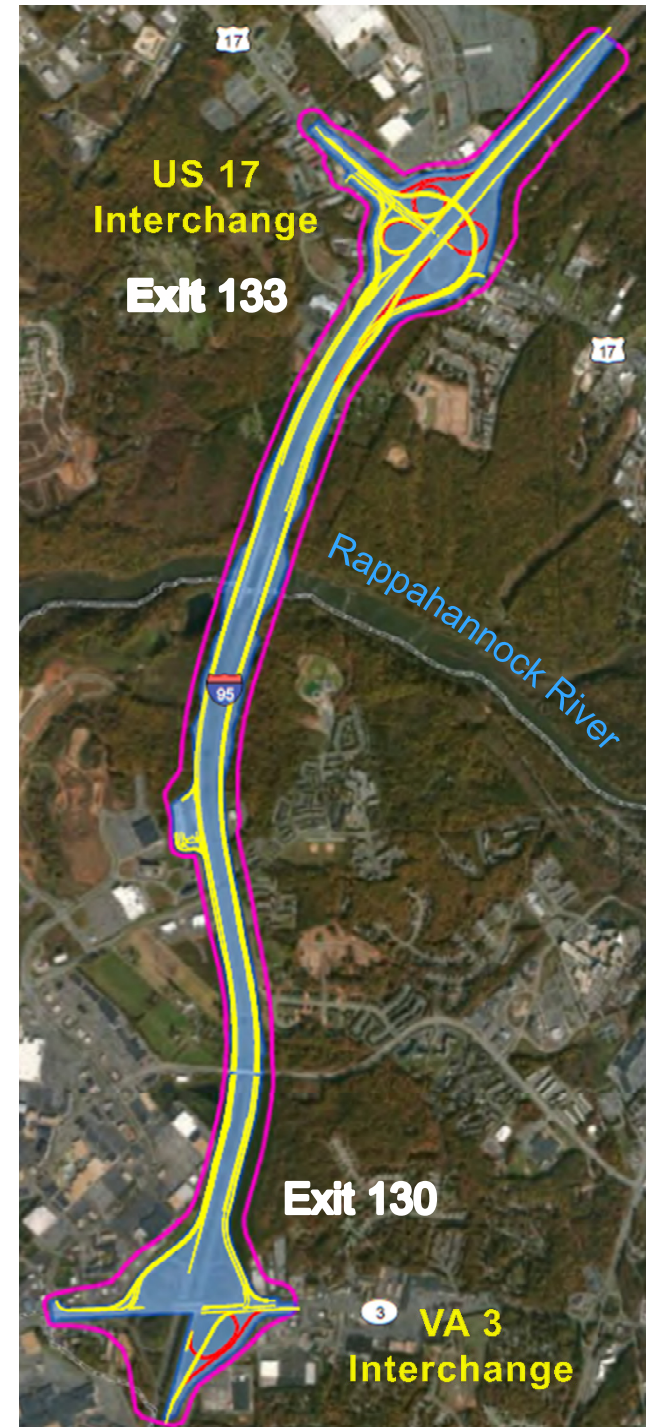
- **One Build Alternative Studied**
- **Based on concurrent Interchange Modification Report (IMR)**
 - Over 13 options evaluated with 4 retained for further analysis

No Build

- **Roadway Maintenance Improvements**

Build Alternative

- Two Collector Distributor roads in each direction
- Improvements to I-95 Exit 133 (US 17 Interchange)
- Improvements to I-95 Exit 130 (VA 3 interchange)
- Improvements to access at the Virginia Welcome Center





Overview of Impacts Build Alternative

Category	Quantity in Study Area	Impacts of Build Alternative
Right of Way	172 parcels 174.5 acres	73 parcels 32.7 acres 8 Displacements
Non-Profit Organizations (no.)	1	1
Low Income Housing (no.)	2	0
Other Community Facilities (no.)	3	0
Prime farmlands (acres)	12.6	0
Forest Land (acres)	116.8	37.9
Streams (linear Feet)	10,754	6,408
Wetlands (acres)	5.97	2.4
FEMA Floodplain (acres)	18.9	13.4
Eligible Archaeology sites (parcels/acres)	1 / 1.4	1 / 1.2
Eligible Architectural Sites (parcels/acres)	2 / 12.4	2 / 6.5
Noise (count of receptors impacted)	192	45
Potential Contaminated Sites (count)	4	3
4(f) Recreational Lands (acres)	0.64	0.1

Public Comments

Public Meeting

June 24th, 2015 - James Monroe High School

Attendance

63 people attended the meeting

Public Responses (40 Comments received)

Majority generally in favor of the project

- Not in support of tolls
- Should be high priority

Concerns

- Project does not do enough – too much congestion between exits
- Too much focus on Central Park not the other Businesses

Suggestions

- Build to the west away from the interstate
- Other congestion prevention measures are needed

Public Comments

Federal and State Comments

- Evaluate Avoidance and Minimization options (USACE, EPA)
- Natural Bottom Culverts or Countersinking of Culverts is required (USACE, EPA)
- Stormwater management facilities should not be located in jurisdictional streams and wetlands (USACE)
- Additional Coordination is required for Threatened and Endangered Species (USACE)
- More discussion is needed on secondary and cumulative impacts (EPA)

Next Steps

CTB Identifies the preferred alternative

October
2015

VDOT documents the preferred alternative and responds to public comments in the Revised EA

November
2015

VDOT requests NEPA decision from FHWA Winter 2015

Winter
2015-2016