

Rail Industrial Access Program Application Briefing

Performance Livestock & Feed Company
Henry County, Virginia

Jeremy Latimer

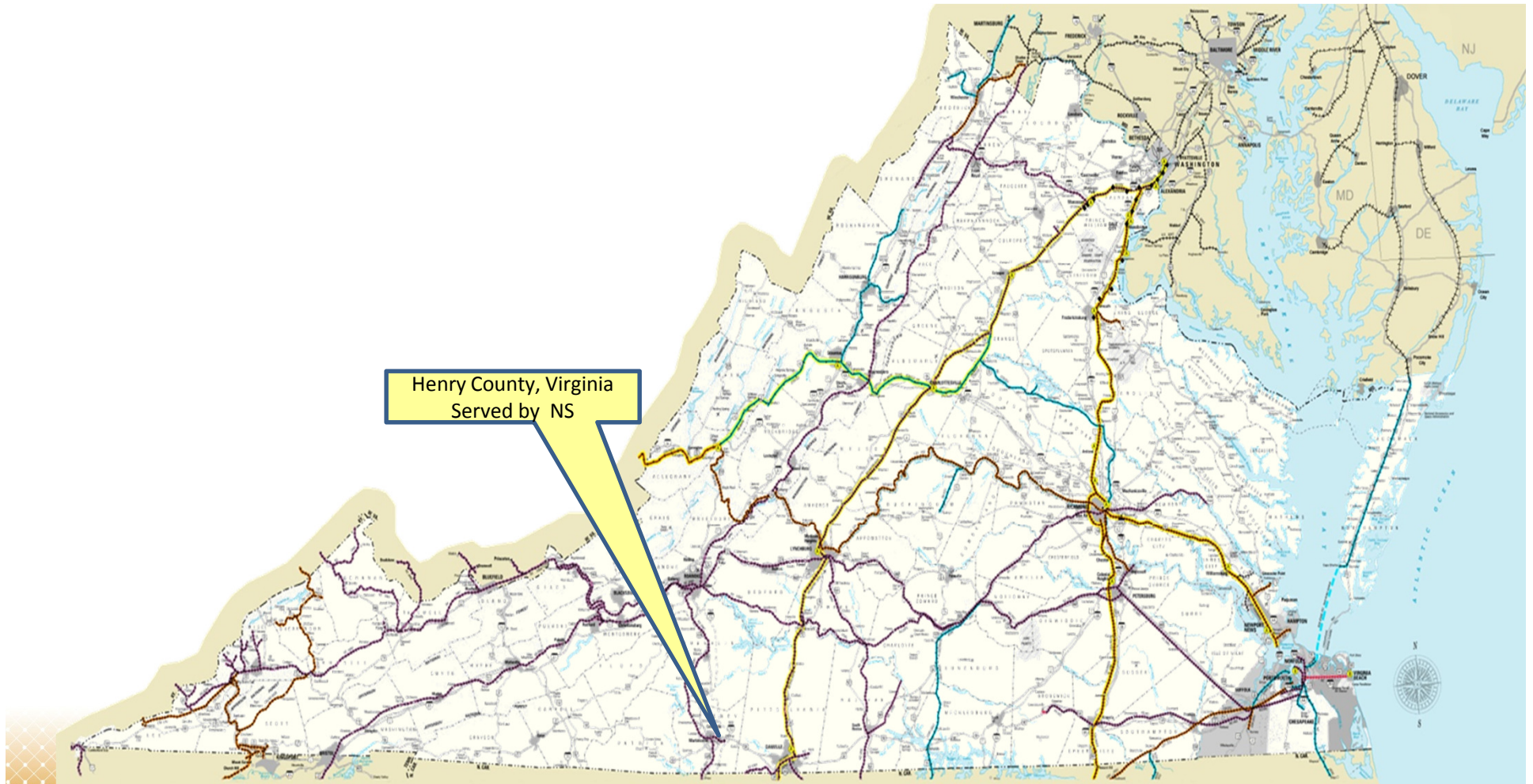
Rail Transportation Programs Administrator



Virginia Department of Rail and Public Transportation

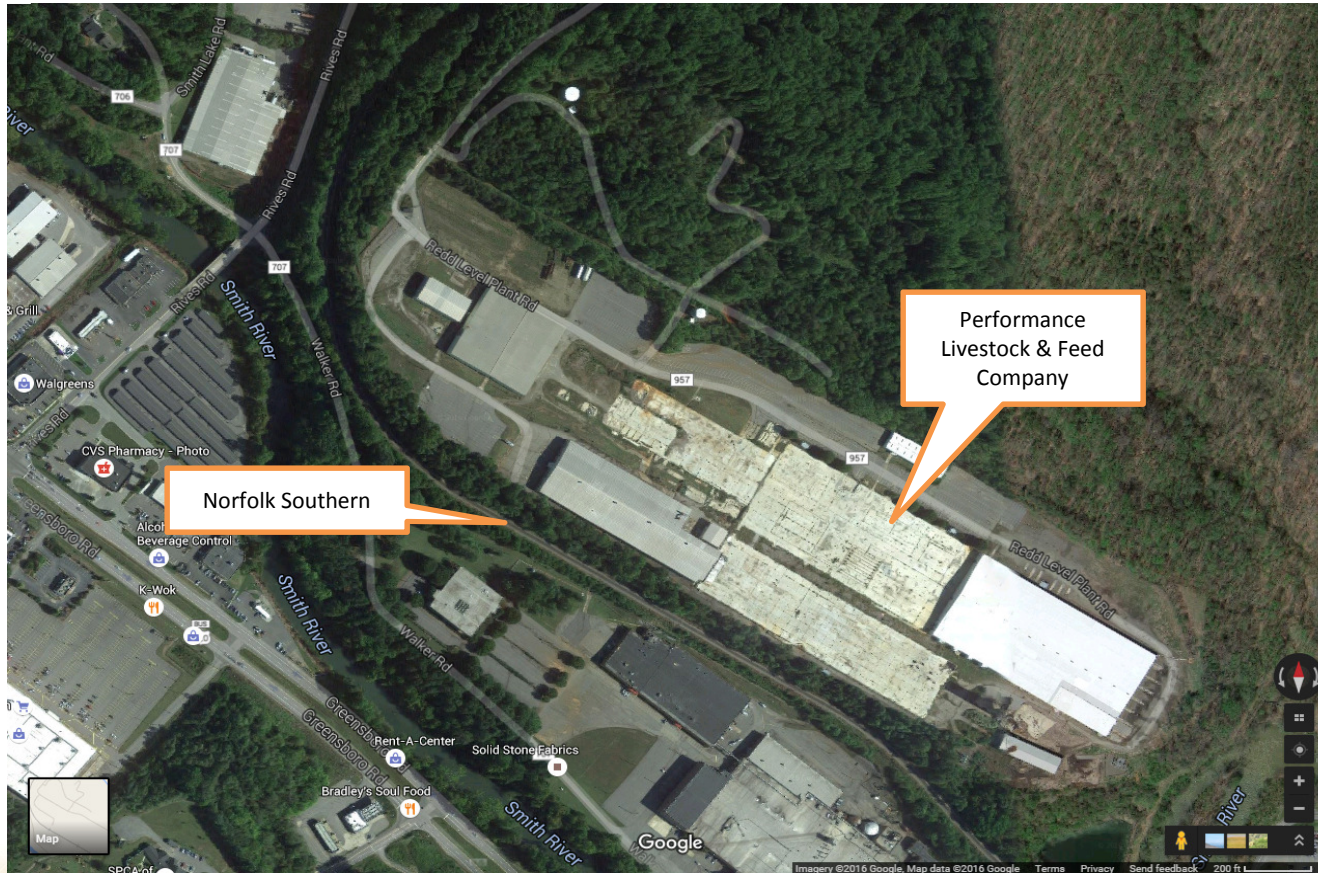
Project Location

Performance Livestock & Feed Company



Project Location

Performance Livestock & Feed Company



Project Summary

- Performance Livestock & Feed Company produces complete feed pellets, grains commodities, and operates a working cattle operation. They provide services for farm operations, mills, and several universities from Florida to Michigan.
- Performance is headquartered in North Carolina and expanding to Henry County, VA due to rail access at the Redd Level location.
- This rail expansion project is part of a planned expansion of Performance with their feed division.
 - The rail expansion will increase their ability to ship finished products by rail and receive raw materials by rail
 - Rail traffic is expected to be 1,000 cars within the first year of operation.

Project Summary

- Application for \$345,000
 - \$4.0M Estimated Capital Expenditure
 - Land Acquisition
 - Building Improvements
 - Rail Construction
 - \$990,000 Estimated Rail Project Cost
 - Cost overruns responsibility of applicant
- Public Benefit Metrics:
 - 1,000 additional railcars annually
 - 0 existing cars per year (new business in Virginia)
 - 32 new jobs associated with this expansion
 - Ratio of railcar/trucks will be approximately 1.1 (1000 railcars / 900 trucks)
- Application scores 69 of 100 points.
- Minimum threshold will be at least 100 new carloads.



www.drpt.virginia.gov
804-786-4440