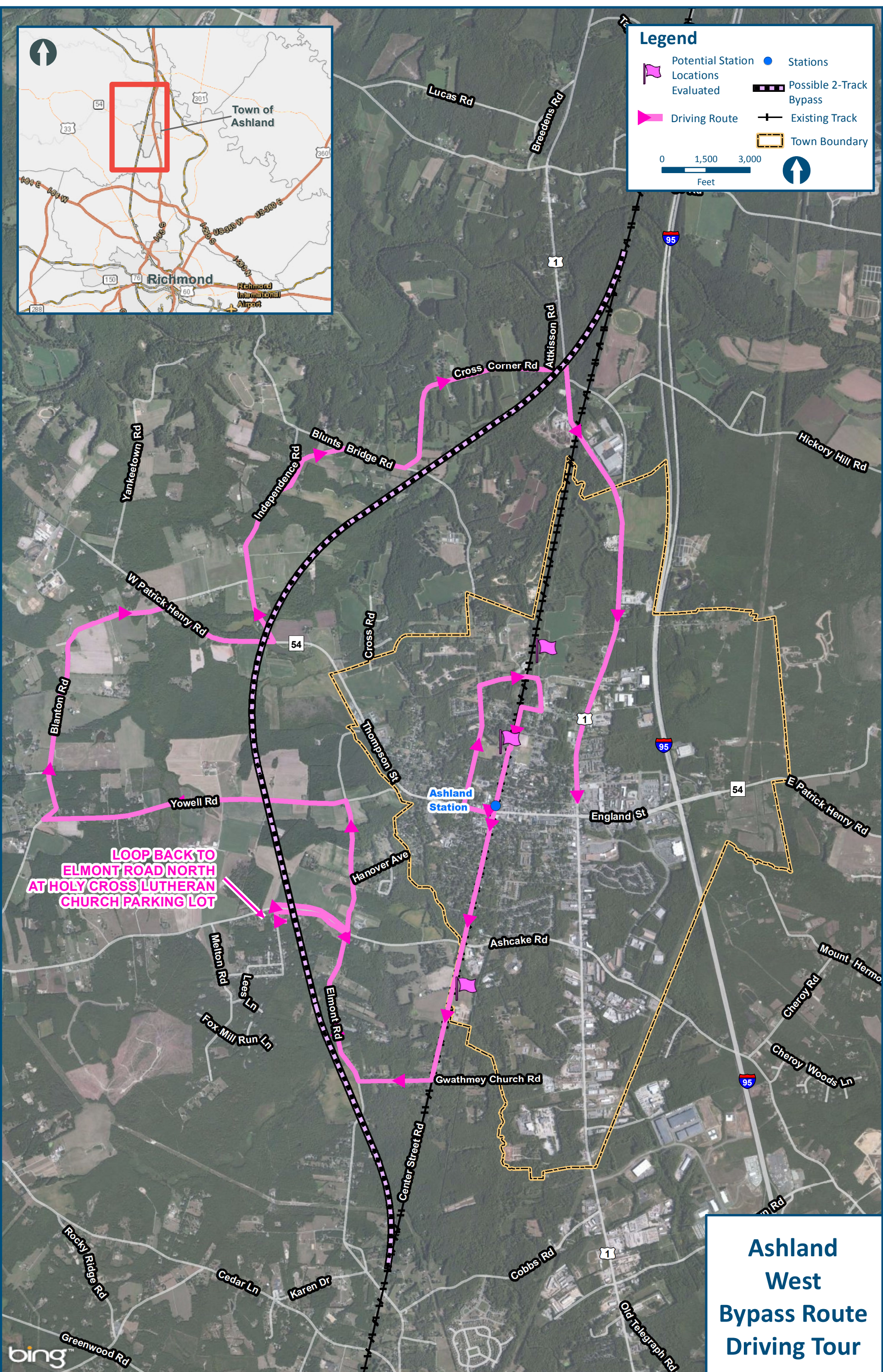


Legend

- Potential Station Locations Evaluated (Pink flag icon)
- Driving Route (Pink line with arrow icon)
- Possible 2-Track Bypass (Dashed black line icon)
- Existing Track (Black line with cross-ticks icon)
- Town Boundary (Yellow dashed line icon)
- Stations (Blue circle icon)

0 1,500 3,000 Feet



**LOOP BACK TO
ELMONT ROAD NORTH
AT HOLY CROSS LUTHERAN
CHURCH PARKING LOT**

**Ashland
West
Bypass Route
Driving Tour**

\\cslsmain\GIS_DATA\GIS\Projects\011545_VADeplotrRails-PublicTransportation\0239056_RAPS-4AIDDev-ConceptEnginmap_docs\mxd\Ashland\AshlandBypass_CTB\Trip.mxd | Last Updated: 10.28.2016



www.DC2RVArail.com

