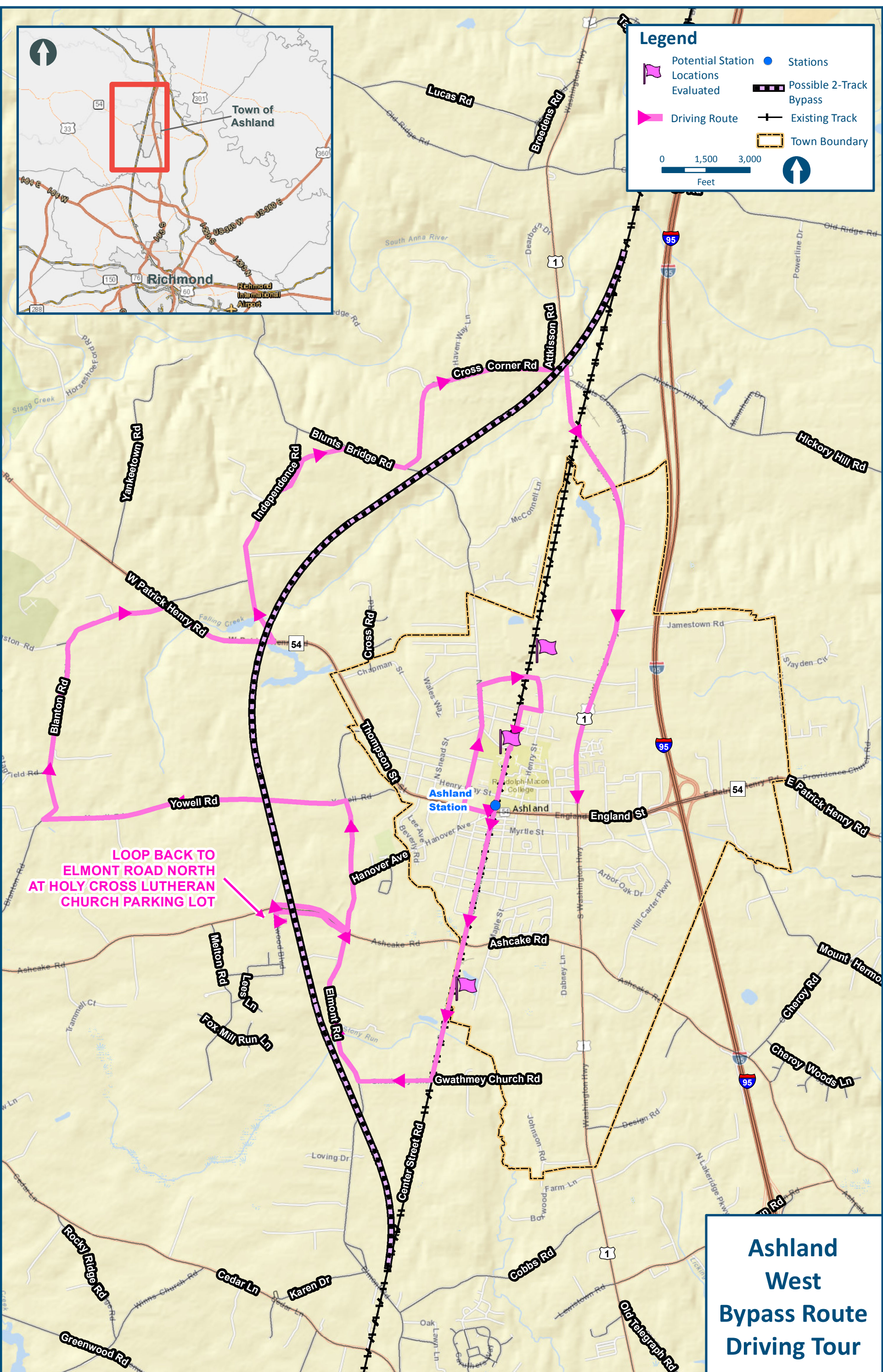


**Legend**

- Potential Station Locations Evaluated (Pink flag icon)
- Driving Route (Pink arrow icon)
- Possible 2-Track Bypass (Dashed black line icon)
- Existing Track (Black line with cross-ticks icon)
- Town Boundary (Dashed yellow line icon)
- Stations (Blue circle icon)
- Scale: 0, 1,500, 3,000 Feet
- North Arrow



**LOOP BACK TO  
ELMONT ROAD NORTH  
AT HOLY CROSS LUTHERAN  
CHURCH PARKING LOT**

**Ashland  
West  
Bypass Route  
Driving Tour**

\\cslsmain\GIS\_DATA\GIS\Projects\011545\_VADeplRailPublicTransporation\0239056\_RAPS-4AIDDev-ConceptEnginmap\_docs\mxd\Ashland\AshlandBypass\_CTB\Trip.mxd | Last Updated: 10.28.2016