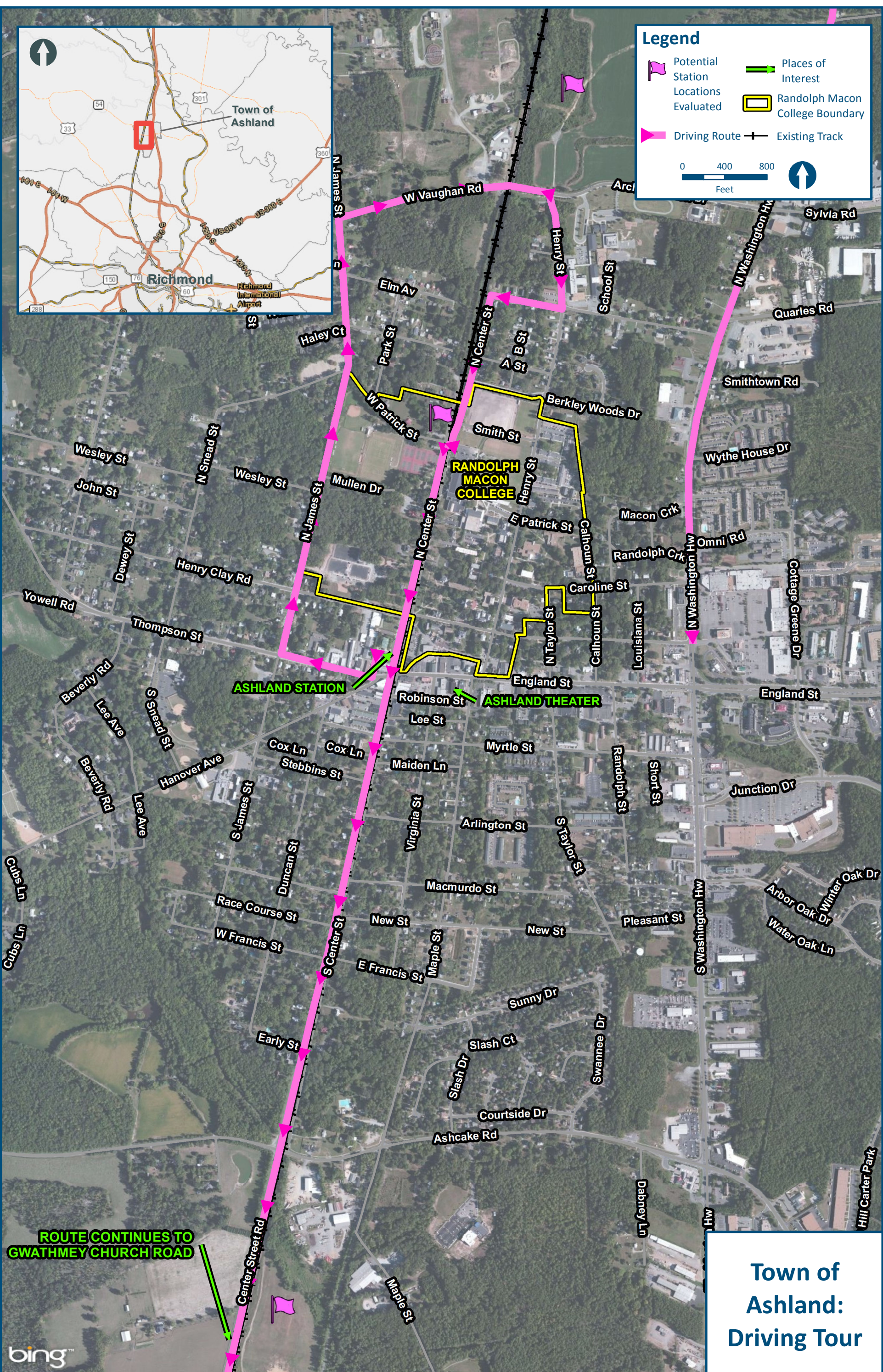


Legend

- Potential Station
- Locations Evaluated
- Driving Route
- Places of Interest
- Randolph Macon College Boundary
- Existing Track

0 400 800 Feet



ROUTE CONTINUES TO GWATHMEY CHURCH ROAD

Town of Ashland: Driving Tour

\\cslsmain\GIS_DATA\GIS\Projects\011545_VADepofRails-PublicTransportation\0239056_RAPS-4\AIDDev-Concept\Eng\map_docs\mxd\Ashland\Ashland_Overview_CTB\Trip.mxd | Last Updated: 10/28/2016



www.DC2RVArail.com

