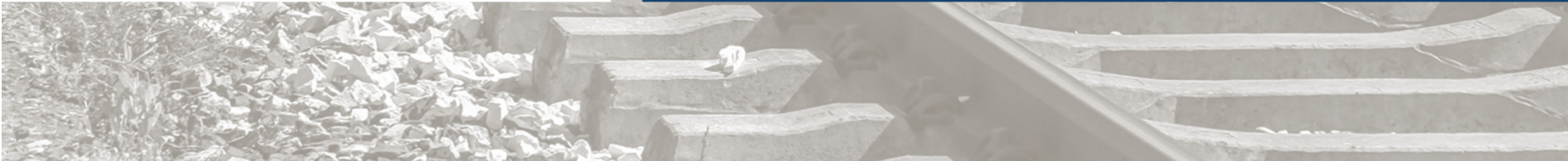




Virginia Department of Rail and Public Transportation

Station Stop Policy

VIRGINIA
STATEWIDE RAIL PLAN



Purpose and Need

- Set stakeholder expectations
- Provide evaluation standards
- Define stakeholder responsibilities
- Provide communities with a roadmap
- Currently no consistent policy



AMTRAK CASCADES

Intercity Passenger Rail Cost Factors

Operations

- Amtrak staff, management, ticket services
- Fuel
- Food and beverage
- Equipment, maintenance cleaning
- Leases
- Insurance
- Performance payments
- Alternative transportation (during service disruptions)

Capital Construction & Equipment

- Track Construction
- Signal systems
- Grade separations & roadway crossings
- Locomotives
- Traincars
- Stations
- Long-term track maintenance (Federally funded construction projects)



Stations

Platforms

- Tactile strip & surfaces
- ADA compliance
- Stormwater treatment
- Lighting
- Utilities
- Cleaning
- Litter/Garbage collection
- Insurance

Building

- Maintenance
- Utilities
- Janitorial services
- Parking
- Landscaping
- Insurance
- Security



Land use & Economic activity

Public roads, Sidewalks & Bike lanes

Public Transit

Revenues

- Tickets
- Food & beverage
- Express freight
- Public subsidies - WA
- Public subsidies - OR

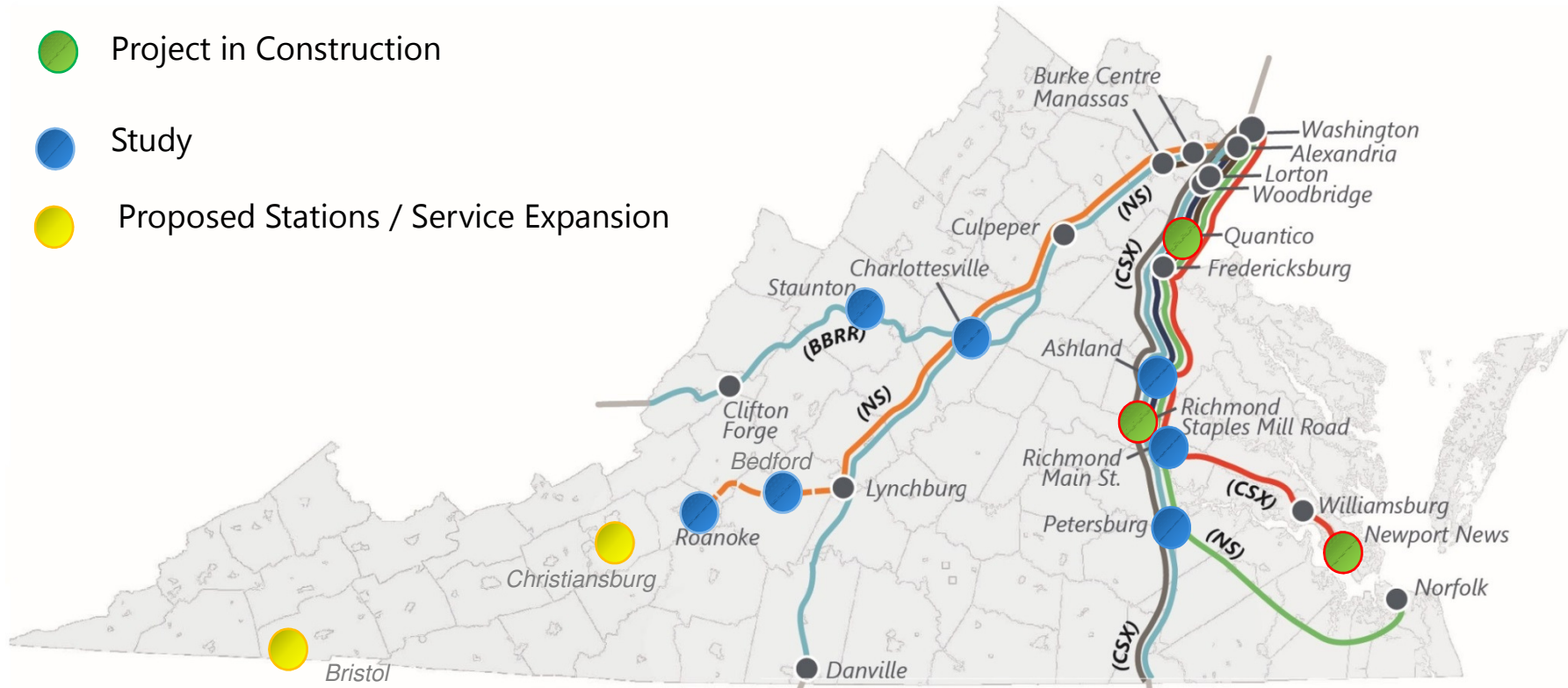
Current Process Elements

- Receive proposal from a locality
- High-level assessment by DRPT
- Ridership analysis provided by Amtrak
- Discussions with Host Railroad
- Station Location Decisions are treated on a case-by-case basis
 - No defined responsibilities
 - No defined funding requirements
- Negotiations between DRPT, Amtrak and Host Railroad(s)



Virginia Station Activities

- Project in Construction
- Study
- Proposed Stations / Service Expansion



Decision Factors

- Proximity to other stations
- Amount of new riders added to corridor
- Ridership impact to other stations
- Land use and connectivity
- Local and state funding availability
- Impact to Host Railroad
- Impact to existing services (VRE and Amtrak)
- Economic development



- Enhancement of existing rail corridors vs. Expansion
- Role of DRPT in analyzing station locations
- Evaluation Criteria
- Roles/Responsibilities of DRPT (funding)
- Roles/Responsibilities of Localities (funding)





Next Discussion: Proposed Policy

