



COMMONWEALTH of VIRGINIA

Commonwealth Transportation Board

Shannon Valentine
Chairperson

1401 East Broad Street
Richmond, Virginia 23219

(804) 786-2701
Fax: (804) 786-2940

Agenda item # 8

RESOLUTION OF THE COMMONWEALTH TRANSPORTATION BOARD

February 21, 2018

MOTION

Made By: Ms. DeTuncq, Seconded By: Mr. Yates
Action: Motion Carried, Unanimously

Title: Limited Access Control Changes (LACCs)
US Route 15/29 Brandy Station Park and Ride
Culpeper County

WHEREAS, on August 17, 1967, the State Highway Commission (Commission), predecessor to the Commonwealth Transportation Board (CTB), designated a section of U.S. Route 29 in Culpeper County, the Culpeper By-Pass, including the relocation of Route 15 and 29 near Brandy between Gaines Run and State Route 754, including any necessary relocations, interchanges, ramps, connections, etc., as a limited access highway in accordance with then Article 3, Chapter 1, Title 33 of the *Code of Virginia* of 1950, as amended; and

WHEREAS, on December 14, 1967, the Commission declared that the section of Route 15 and 29 between State Route 754 to a point on U.S. Route 15 and 29 north of Remington near the intersection of State Route 28 in Fauquier County, including any necessary relocations, interchanges, ramps, connections, etc. as shown on the plans be designated as limited access highway,; and

WHEREAS, the proposed Project expands and reconstructs the Brandy Station Park and Ride lot and changes the current limited access line as shown on the attached plans; and

WHEREAS, A Posting of Willingness to hold a Public Hearing was advertised between November 7, 2017 and November 22, 2017 and no request for a Public Hearing was received; and

Resolution of the Board
US Route 15/29 Brandy Station Park and Ride
Proposed Limited Access Control Changes (LACC)
Culpeper County
February 21, 2018
Page Two

WHEREAS, a traffic analysis report for this project was not deemed necessary because this is only a parking lot reconstruction; and

WHEREAS, The County of Culpeper is in an attainment area and the project will not have an adverse impact on air quality, therefore no air quality conformity study is required; and

WHEREAS, the proposed Project is in compliance with National Environmental Policy Act (NEPA) requirements and a Programmatic Categorical Exclusion (PCE) has been developed in cooperation with the Federal Highway Administration and in accordance with federal guidelines; and

WHEREAS, the Chief Engineer has determined that the proposed change will not adversely affect the safety or operation of the highways; and

WHEREAS, the economic, social and environmental effects of the proposed Project have been duly examined and given proper consideration and this evidence, along with all other, has been carefully reviewed; and

WHEREAS, the proposed Project and LACC was supported by the County Administrator of the County of Culpeper in a letter dated December 1, 2017; and

WHEREAS, the Department has reviewed the proposed changes and determined that all requirements of 24 VAC 30-401-20 have been met.

NOW, THEREFORE, BE IT RESOLVED, in accordance with §33.2-401 of the *Code of Virginia* and Title 24, Agency 30, Chapter 401 of the *Virginia Administrative Code*, that the CTB hereby finds and concurs in the determinations and recommendations of VDOT made herein, and directs that Route 15 and 29 continue to be designated as limited access control areas, with the boundaries of limited access control being modified from the current locations to those shown on Attachment A, the Limited Access Exhibit, and Attachment B, the Limited Access Points Table.

BE IT FURTHER RESOLVED, the Commissioner of Highways is authorized to take all actions and execute any and all documents necessary to implement such changes.

#####

CTB Decision Brief
Proposed Limited Access Control Changes (LACCs)
Brandy Station Park and Ride US Route 15/29
Project P029-023-760;
UPC 109523
Culpeper County, Virginia

Issues: State Highway Project P029-023-760, C501 (“Project”) provides for the expansion and reconstruction of Brandy Station Park & Ride lot. The area designated as limited access previously approved for this portion of US Route 15/29 will need to be modified to accommodate the Project. These changes require the approval of the Commonwealth Transportation Board (“CTB”).

Facts:

- The project’s scope will construct a new Park and Ride facility at the intersection of US Route 15/29 and Route 663. Work will consist of removing the existing commuter parking spaces along Route 663 and replace them with a new facility that provides 95 parking spaces (including 5 handicapped accessible) for commuters.
- A Posting of Willingness to hold Public Hearing was advertised between November 7, 2017 and November 22, 2017 and no request for a Public Hearing was received.
- A traffic analysis report for this project was not deemed necessary since this is only a parking lot reconstruction.
- The County of Culpeper is in an attainment area and the project will not have an adverse impact on air quality, therefore no air quality conformity study is required.
- The Project is in compliance with National Environmental Policy Act (NEPA) requirements and a Programmatic Categorical Exclusion (PCE) has been developed in cooperation with the Federal Highway Administration and in accordance with federal guidelines.
- The Chief Engineer has determined that the proposed change will not adversely affect the safety or operation of the highways.
- The economic, social, and environmental effects of the proposed Project have been duly examined and given proper consideration, and this evidence, along with all other has been carefully reviewed.
- The proposed Project and LACC was supported by the County Administrator of the County of Culpeper in a letter dated December 1, 2017.
- The proposed LACC is in compliance with the polices and requirements of the CTB contained in Title 24, Agency 30, Chapter 401 of the *Virginia Administrative Code*.

Recommendations: It is recommended that, pursuant to §33.2-401 of the *Code of Virginia* and Title 24, Agency 30, Chapter 401 of the *Virginia Administrative Code*, that the CTB (i) find and concur in the determinations and recommendations of VDOT made herein; (ii) direct that Route 15/29 interchange, continue to be designated as Limited Access Highways as described in the resolution and approve the boundaries of the area designated as limited access as modified by the LACC to accommodate the expansion of the Park and Ride lot.

Action Required by CTB: The Code of Virginia requires a majority vote of the CTB to approve

CTB Decision Brief
Proposed Limited Access Control Changes
US Route 15/29 Brandy Station Park and Ride
Culpeper County
February 21, 2018
Page Two

the recommended LACC. The CTB will be presented with a resolution for a formal vote to approve the change in limited access control for the proposed Project as recommended herein and to provide the Commissioner of Highways the requisite authority to take all actions and execute all documents necessary to implement the LACC.

Result, if approved: The Commissioner of Highways will be authorized to take all actions and execute any and all documents needed to comply with the resolution, and the improvements in State Highway Project P029-023-760, C501 will move forward.

Options: Approve, Deny, or Defer.

Public Comments/Reactions: A Posting of Willingness to hold Public Hearing was advertised and no request for a public hearing was received.



COMMONWEALTH of VIRGINIA

DEPARTMENT OF TRANSPORTATION
1401 EAST BROAD STREET
RICHMOND, VIRGINIA 23219 2000

Stephen Brich
Commissioner

February 1, 2018

The Honorable Shannon Valentine
The Honorable Stephen C. Brich, P.E.
The Honorable Jennifer Mitchell
The Honorable Jerry L. Stinson II
The Honorable Henry "Hap" Conners, Jr.
The Honorable Mary Hughes Hynes
The Honorable Alison DeTuncq
The Honorable F. Gary Garczynski
The Honorable Carlos M. Brown
The Honorable Stephen A. Johnsen
The Honorable F. Dixon Whitworth, Jr.
The Honorable E. Scott Kasprovicz
The Honorable Court G. Rosen
The Honorable Marty Williams
The Honorable John Malbon
The Honorable Greg Yates

Subject: Approval of Limited Access Control Change (LACC) for the Brandy Station Park and Ride, Culpeper County.

Dear Commonwealth Transportation Board Members:

The Department has initiated the above request for a limited access control change (LACC) for your consideration. The proposed limited access control changes on State Highway Project P029-023-760, C501 have been determined as a necessary design feature and recommended for approval by the Department's staff. The proposed project includes the reconstruction of the Brandy Station Park and Ride lot at Route 15/29 and Route 663 Culpeper.

I have reviewed the staff's recommendations and determined that approving these limited access control changes will not adversely affect the safety or operation of the affected highway network. I have determined that this request should be considered by the Board.

Sincerely,


Garrett W. Moore, P.E.
Chief Engineer

Moved by Mr. Landrith, seconded by Mr. Chilton,
that,

a section of U. S. Route 29 in Culpeper County, the Culpeper By-Pass, including the relocation of Route 15 and 29 near Brandy, beginning at a point .20 MI. + north of Gaines Run south of Culpeper, and extending in a northeasterly direction to a point 0.4 MI. + north of the intersection of State Route 754 north of Brandy on existing U. S. Route 15 and 29, including any necessary relocations, interchanges, ramps, connections, etc., as shown on the plans, be designated as a limited access highway in accordance with Article 3, Chapter 1, Title 33 of the 1950 Code of Virginia as amended.

Interchanges are to be provided at U. S. Route 15 south of Culpeper and U. S. Route 15 and 29 north of Culpeper. Ultimate designs of grade separations and interchanges have been planned at the connection of U. S. Route 29 south of Culpeper and at State Routes 3 and 667. Access at-grade will be permitted at these points until such time as these facilities have been completed. At-grade points of access will be permitted under this resolution at the intersection of State Route 685 and the combined intersections of Routes 663 and 754.

These points are to be made a part of the right of way transaction and record.

MOTION CARRIED.

Moved by Mr. Landrith, Seconded by Mr. Chilton,
that,

the section of proposed arterial U. S. Route 220 in the City of Roanoke, the "Southwest Freeway", beginning at a point at the intersection of St. Route 24 (Elm Avenue) and extending in a southwesterly direction to a point 0.238 miles south of U. S. Route 220 (Franklin Road) said points being shown on the plans for State Project 6220-128-104-PE-101, 0599-128-101-RW-201, including any necessary relocations, interchanges, ramps, connections, etc., as shown on the plans, be designated as a limited access highway in accordance with Article 3, Chapter 1, Title 33 of the 1950 Code of Virginia as amended.

At-grade points of access will not be permitted under this resolution.

Now be it known that in the Council of the City of Roanoke on the 30th day of August 1966, resolution number 16617 was approved, designating the proposed Southwest Freeway of which the above described is a section, limited access.

MOTION CARRIED.

Moved by Mr. Landrith, seconded by Mr. Selater,
that the Commission confirm letter ballot action adopting the following resolution.

WHEREAS, \$900,000 Reserve Maintenance Funds of the State of Virginia Toll Revenue Bonds (Series 1954) account with the Virginia National Bank, Trustee, was previously invested in 4-7/8% treasury notes as approved by resolution of the State Highway Commission May 19, 1966, these notes to mature November 15, 1967, and

WHEREAS, the U. S. Treasury is now offering 5-5/8% treasury notes to mature February 15, 1969, and the Trustee advises that these are available if it is desired to reinvest the proceeds of the above maturities, and

WHEREAS, the Department's records indicate that these Funds will not be needed for major repair work prior to maturity of the treasury notes, now therefore

BE IT RESOLVED by the State Highway Commission, under provisions of Section 602 of the Trust Indenture, that the said \$900,000 be invested in 5-5/8% U. S. Treasury notes, due February 15, 1969.

MOTION CARRIED.

Moved by Mr. Landrith, seconded by Mr. Selater,
that the proposed dual laning of U. S. Route 15 and 29 beginning at a point 0.4 mile + north of the intersection of State Route 754 north of Brandy in Culpeper County said point being the terminus of the resolution pertaining to the Culpeper By-Pass and Relocation near Brandy adopted by the Highway Commission at its meeting of August 17, 1967 thence extending in a north-easterly direction along the existing route as shown on the plans for State Projects 6015-023-106-RW-201 and 0015-023-102-RW-201 to a point south of Remington in Culpeper County where the proposed By-Pass of Remington leaves the existing route thence in a northerly direction along the proposed By-Pass as shown on the plans for State Projects 0015-023-102-RW-201 and 0015-030-104-RW-201 to a point on existing U. S. Route 15 and 29 north of Remington near the intersection of State Route 28 in Fauquier County, including any necessary relocations, interchanges, ramps, connections, etc., as shown on the plans be designated as a limited access highway, in accordance with Article 3, Chapter 1, Title 33 of the 1960 Code of Virginia as amended.

At-grade, points of access are to be permitted at the following locations:

- Point 1, State Routes 754 & 676 right & left.
- Point 2, State Route 756 right.
- Point 3, Connection existing U. S. Route 15 & 29 right.
- Point 4, State Route 651 right & left.
- Point 5, Connection existing U. S. Route 15 & 29 right.

These points are to be made a part of the right of way transaction and record.

MOTION CARRIED.

Moved by Mr. Solater, seconded by Mr. McWane,
that,

WHEREAS, under authority of Section 33-36.4 of the Code of Virginia of 1960, as amended, request is made by the City of Alexandria for maintenance payments at the rate of \$1,000 per mile annually on additional streets meeting required standards for maintenance payments;

NOW, THEREFORE, BE IT RESOLVED, that quarterly payments at the base rate of \$1,000 per mile annually be made to the City of Alexandria on additional streets totaling 2.33 miles that have been constructed to meet standards, by this section of the Code, effective beginning October 1, 1967 with the first quarterly payment due after December 31, 1967.

The additional mileage of streets eligible for payment and totaling 2.33 miles, described as follows:

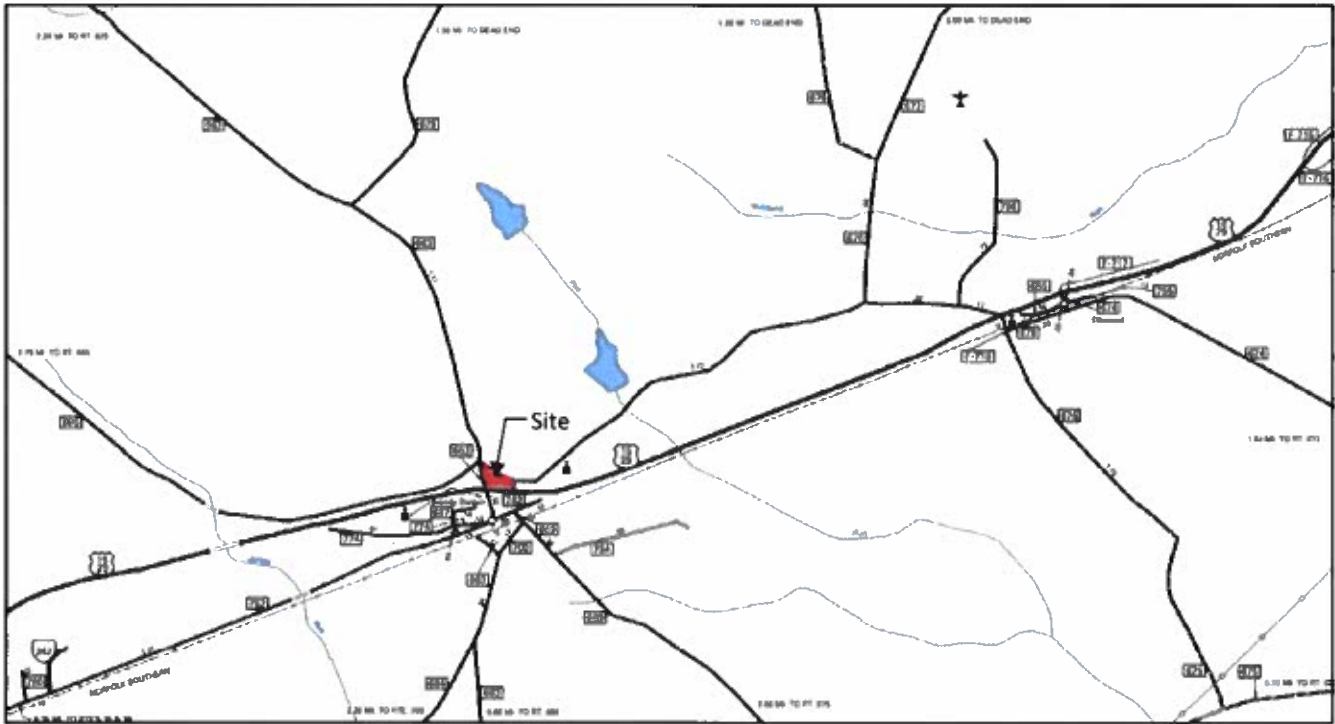
Beauregard St.	- From Lincoln Rd. to Quantrell Ave.	- .153 MI.
S. West. St.	- From Wilkes St. N. to R.R. Property	- .037 MI.
Armistead St.	- From 1229' E. of Quantrell St. to Beauregard St.	- .153 MI.
S. Holmes Run Pkwy.	- From 400' E. of N. Paxton Eastward 817'	- .080 MI.
S. Holmes Run Pkwy.	- From N. Van Dorn St. to N. W. of N. Paxton	- .339 MI.
N. Howard St.	- From 800' S. to 242' N. of Ormond Ave.	- .102 MI.
N. Kemper St.	- From N. Jordan St. S. W. to Newcomb Place	- .078 MI.
Lindsay Place	- From Newcomb Place to Cul-de-sac	- .059 MI.
Newcomb Place	- From N. Kemper St. W. to Cul-de-sac	- .112 MI.
Ormond Ave.	- From N. Galliard St. to N. Howard St.	- .058 MI.
Oronoco St.	- From N. Union St. to the Potomac River	- .049 MI.
N. Pickett St.	- From S. of Taney Ave. 666' to Dead End	- .126 MI.
Polk Avenue	- From Owen St. to N. Pickett Street	- .047 MI.
Quantrell Ave.	- From N. Armistead St. to N. Beauregard St.	- .109 MI.
Rayburn Ave.	- From N. Beauregard St. West 435' to Cul-de-sac	- .082 MI.
Taylor Drive	- From Frontage Road S. E. 577'	- .109 MI.
Wheeler Avenue	- From West Incinerator line to 3500' East	- .662 MI.

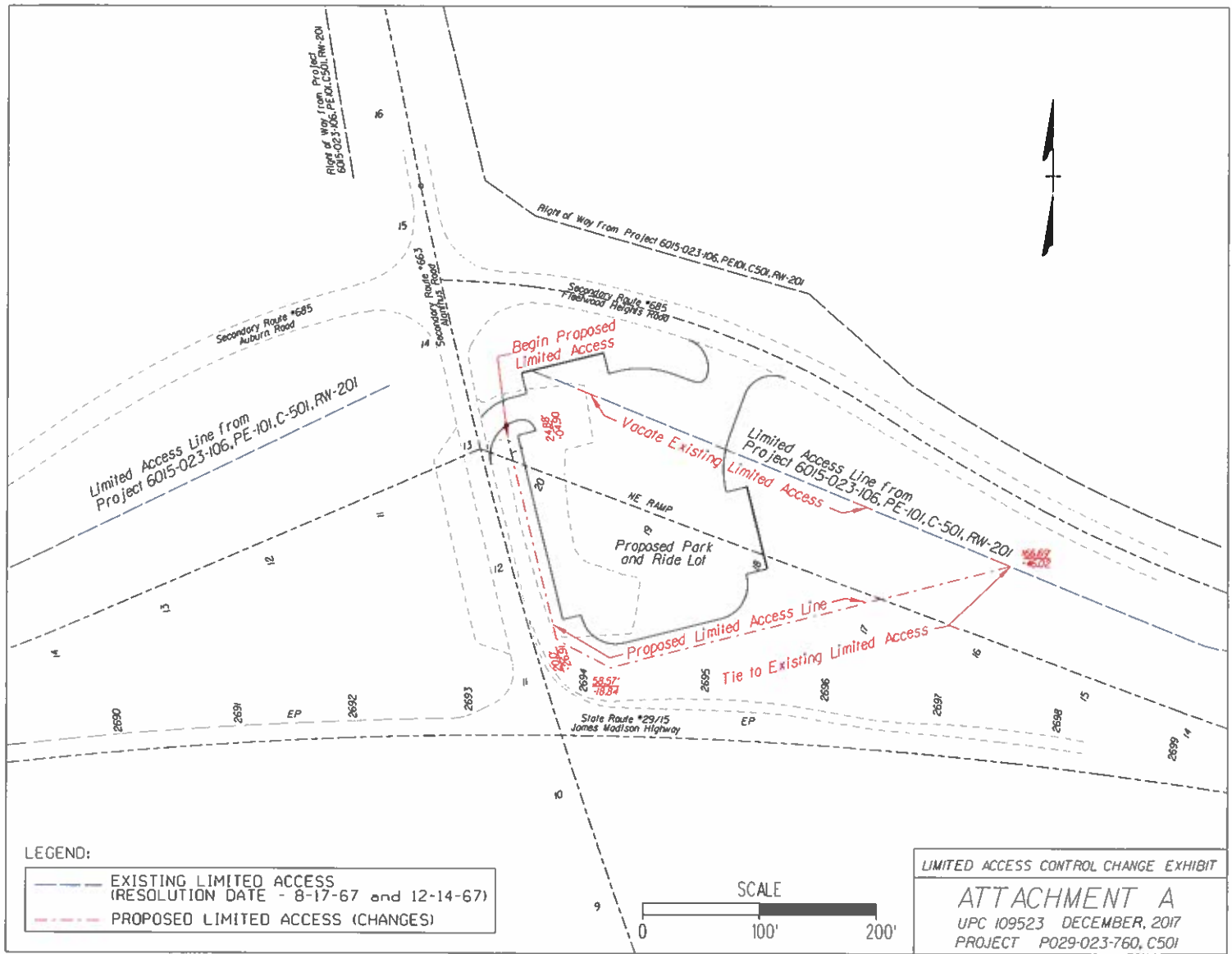
Vicinity Map

Brandy Station P&R Reconstruction – Culpeper County, Virginia

State Project No. P029-023-760,P101, R201, C501

UPC 109523





Limited Access Points Table

Alignments Based on VDOT Plans 6015-023-106, PE-101, C501, RW-201

<i>Alignment</i>	<i>Station</i>	<i>Offset (FT)</i>	<i>Description</i>
<i>Route 663</i>	<i>13+04.90</i>	<i>24.88 RT</i>	<i>Begin Proposed Limited Access Line</i>
<i>Route 663</i>	<i>11+26.91</i>	<i>20.00 RT</i>	<i>Proposed Limited Access Line</i>
<i>Route 15</i>	<i>2694+18.84</i>	<i>58.57 LT</i>	<i>Proposed Limited Access Line</i>
<i>Route 15</i>	<i>2697+46.02</i>	<i>166.69 LT</i>	<i>End Proposed Limited Access Line Existing Limited Access Line</i>
<i>NE Ramp</i>	<i>14+17.15</i>	<i>60.00 RT</i>	<i>Existing Limited Access Line</i>
<i>Route 15</i>	<i>2703+00.00</i>	<i>78.00 LT</i>	<i>Existing Limited Access Line</i>
<i>Alignment</i>	<i>Station</i>	<i>Offset (FT)</i>	<i>Description</i>
<i>NE Ramp</i>	<i>20+40.00</i>	<i>78.00 RT</i>	<i>Vacate Existing Limited Access Line</i>
<i>Route 15</i>	<i>to 2697+46.02</i>	<i>to 166.69 LT</i>	

LIMITED ACCESS CONTROL CHANGE EXHIBIT

ATTACHMENT B

*UPC 109523 DECEMBER, 2017
PROJECT P029-023-760, C501*