



COMMONWEALTH of VIRGINIA

Commonwealth Transportation Board

Shannon Valentine
Chairperson

1401 East Broad Street
Richmond, Virginia 23219

(804) 786-2701
Fax: (804) 786-2940

Agenda item # 5

RESOLUTION OF THE COMMONWEALTH TRANSPORTATION BOARD

May 20, 2020

MOTION

Made By: Mr. Rucker, Seconded By: Ms. Hynes

Action: Motion Carried, Unanimously

Title: Limited Access Control Changes (LACCs)

**Interstate 395 and Route 27 (Washington Boulevard) at Route 244 (Columbia Pike)
Interchange**

**Arlington National Cemetery Southern Expansion (ANCSE); Federal Highway
Administration-Eastern Federal Lands Highway Division (FHWA-EFLHD) Defense
Access Road (DAR) Project
Arlington County**

WHEREAS, on March 24, 1955, the State Highway Commission, predecessor to the Commonwealth Transportation Board (CTB) agreed to take over and maintain those roads set forth in the Bureau of Public Roads letter of February 9, 1955 described as the Pentagon Network of Roads (Pentagon Roadway Network) and Route 350 (Shirley Memorial Highway) in Arlington County, including the controlled access features; and

WHEREAS, on January 30, 1966, the State Highway Commission, predecessor to the CTB converted / renumbered Route 350 (Shirley Memorial Highway) to I-95 as a result of Project 0095-100-101, RW-201, C-501 between the Arlington County Line and the Potomac River in Arlington County. Route 27 (Washington Boulevard) and Route 244 (Columbia Pike) Interchange, being a portion of said project, was further designated as I-95; and

Resolution of the Board
Proposed Limited Access Control Changes (LACCs)
Interstate 395 and Route 27 (Washington Boulevard) at Route 244 (Columbia Pike) Interchange
ANCSE; FHWA-EFLHD DAR Project
Arlington County
May 20, 2020
Page 2 of 5

WHEREAS, on November 12, 1976, the American Association of State Highway Transportation Officials approved the renumbering of I-95 in this area to I-395; and

WHEREAS, on February 16, 2011, the CTB approved limited access control changes at the I-395, Route 27 (Washington Boulevard) at Route 244 (Columbia Pike) Interchange, as a result of a request by the U.S. Army Corps of Engineers (USACE) for its project to reconfigure the entrance to the Arlington National Cemetery Facilities Maintenance Complex Phase II; and

WHEREAS, The Arlington National Cemetery Southern Expansion (ANCSE) project is relocating Route 244 (Columbia Pike) from approximately South Oak Street to the interchange with Route 27 (Washington Boulevard) near the Pentagon in Arlington County. The interchange of Route 27 (Washington Boulevard) / Route 244 (Columbia Pike) is within the limits of the Limited Access Highway and is being reconfigured to reduce its footprint so that Arlington National Cemetery expansion can maximize the interment area; and

WHEREAS, The realignment of Route 244 (Columbia Pike) and Route 27 (Washington Boulevard) interchange is being carried out by the Federal Highway Administration-Eastern Federal Lands Highway Division (FHWA-EFLHD) under the Defense Access Road (DAR) program, FHWA-EFLHD DAR Project VA ST ANC(1); State Highway Project 0244-000-908, P101, R201, C501 (UPC# 116717); and

WHEREAS, The FHWA-EFLHD DAR Project VA ST ANC(1) (the "Project") reconfigures the interchange to provide a tight diamond layout with a one-lane ramp exiting Route 27 (Washington Boulevard) and widening to provide three turn lanes at its intersection with Route 244 (Columbia Pike), and a one-lane ramp exiting 244 (Columbia Pike) to enter Route 27 (Washington Boulevard). Improvements include curb and gutter, paved shoulders, a signalized intersection on Route 244 (Columbia Pike) at the Route 27 (Washington Boulevard) ramps, sidewalks on both sides of Route 244 (Columbia Pike), a shared use path on the north side of Route 244 (Columbia Pike) and Route 27 (Washington Boulevard) with provisions for a northern extension to accommodate the planned Cemetery Wall Trail. The Route 244 (Columbia Pike) improvements extend west of South Joyce Street to the entrance to the Virginia Department of Transportation (VDOT) maintenance facility. These improvements will impact the existing limited access control lines, as shown on the Limited Access Line Exhibit and the Limited Access Control Point Stations and Offsets Table (attached); and

Resolution of the Board
Proposed Limited Access Control Changes (LACCs)
Interstate 395 and Route 27 (Washington Boulevard) at Route 244 (Columbia Pike) Interchange
ANCSE; FHWA-EFLHD DAR Project
Arlington County
May 20, 2020
Page 3 of 5

WHEREAS, the FHWA-EFLHD held a Design Public Hearing (“Hearing”) for the Project, including a presentation on the current and proposed locations of the limited access lines, on February 11, 2020, between 6:30 pm and 8:30 pm at the Sheraton Pentagon City Hotel, 900 South Orme Street, Arlington, Virginia 22204, and allowed public input to be collected concerning the LACC request; and

WHEREAS, proper notice of the Hearing was given in advance, and all those present were given a full opportunity to express their opinions and recommendations for or against the Project as presented, their statements being duly recorded; and

WHEREAS, the economic, social and environmental effects of the Project have been duly examined and given proper consideration, and this evidence, along with all other relevant evidence has been carefully reviewed; and

WHEREAS, the VDOT Northern Virginia District Office has reviewed and approved the Interchange Modification Report on March 19, 2020, and found that it adequately addresses the impacts from the Project and the proposed LACCs; and

WHEREAS, the Project is in compliance with National Environmental Policy Act requirements, and an Environmental Assessment (EA) was prepared by the USACE for the Project, in coordination with the Federal Highway Administration (FHWA), VDOT, U.S. Environmental Protection Agency, the National Capital Planning Commission, and Arlington County. The Arlington National Cemetery approved the Finding of No Significant Impact (FONSI) for the ANCSE on December 12, 2019 and the FONSI for the DAR Project VA ST ANC(1) was approved by FHWA–EFLHD on March 27, 2020; and

WHEREAS, the Project is located in the Metro Washington Air Quality Committee Region and is designated as an “attainment area” for the National Ambient Air Quality Standards for the criteria pollutants NO₂, SO₂, Pb, PM₁₀, and PM_{2.5}. The region is designated as a marginal “non-attainment area” for O₃ and classified as a “maintenance area” for CO. As part of the EA for the Project, ambient air quality was addressed by USACE and it was determined that the Project does not create air quality concerns; and

Resolution of the Board
Proposed Limited Access Control Changes (LACCs)
Interstate 395 and Route 27 (Washington Boulevard) at Route 244 (Columbia Pike) Interchange
ANCSE; FHWA-EFLHD DAR Project
Arlington County
May 20, 2020
Page 4 of 5

WHEREAS, the Project is in Arlington County and is supported by letters from the Department of the Army Director of Engineering dated February 19, 2020 and the Arlington County Division of Transportation Director dated March 18, 2020; and

WHEREAS, the FHWA has provided approval for the FHWA-EFLHD DAR Project VA ST ANC(1); State Highway Project 0244-000-908, P101, R201, C501 (UPC# 116717) and the proposed LACCs in a letter dated April 22, 2020; and

WHEREAS, the Chief Engineer has determined that the proposed LACCs will not adversely affect the safety or operation of the highways; and

WHEREAS, the VDOT has reviewed the requested LACCs and determined that all are in compliance with §33.2-401 of the *Code of Virginia* and that the requirements of 24 VAC 30-401-20 have been met; and

WHEREAS, the VDOT recommends approval of the LACCs as shown on the Limited Access Line Exhibit and the Limited Access Control Point Stations and Offsets Table (attached).

NOW, THEREFORE, BE IT RESOLVED, in accordance with §33.2-401 of the *Code of Virginia* and Title 24, Agency 30, Chapter 401 of the *Virginia Administrative Code*, that the CTB hereby finds and concurs in the determinations and recommendations of the VDOT made herein, and directs that the Route 27 (Washington Boulevard) and Route 244 (Columbia Pike) Interchange continue to be designated as a limited access control area, with the boundaries of limited access control being modified from the current locations as shown on the Limited Access Line Exhibit and the Limited Access Control Point Stations and Offsets Table (attached).

BE IT FURTHER RESOLVED, the location of the sidewalks and shared use path within the area designated as limited access and its construction and maintenance is approved as proposed and presented at the Hearing for the Project by FHWA-EFLHD, as the same may be modified during the ongoing design.

Resolution of the Board
Proposed Limited Access Control Changes (LACCs)
Interstate 395 and Route 27 (Washington Boulevard) at Route 244 (Columbia Pike) Interchange
ANCSE; FHWA-EFLHD DAR Project
Arlington County
May 20, 2020
Page 5 of 5

BE IT FURTHER RESOLVED, that pedestrians and bicyclists are authorized to use the sidewalks and shared use path along Route 244 (Columbia Pike) and Route 27 (Washington Boulevard), within the area designated as limited access.

BE IT FURTHER RESOLVED, the Commissioner of Highways is authorized to take all actions and execute any and all documents necessary to implement such changes.

#####

CTB Decision Brief
Proposed Limited Access Control Changes (LACCs)
Interstate 395 and Route 27 (Washington Boulevard) at Route 244 (Columbia Pike)
Interchange

Arlington National Cemetery Southern Expansion (ANCSE); Federal Highway
Administration-Eastern Federal Lands Highway Division (FHWA-EFLHD) Defense Access
Road (DAR) Project VA ST ANC(1)
Project 0244-000-908, P101, R201, C501
UPC# 116717
Arlington County

Issues: The area designated as limited access previously approved for the Route 27 (Washington Boulevard) and Route 244 (Columbia Pike) Interchange needs to be modified to accommodate the realignment of Route 244 (Columbia Pike), the reconfiguration of its interchange with Route 27 (Washington Boulevard), the relocation of the Operations Complex for the Arlington National Cemetery, and provide sidewalks on both sides of Route 244 (Columbia Pike), a shared use path on the north side of Route 244 (Columbia Pike) and Route 27 (Washington Boulevard) within the area designated as limited access with provisions for a northern extension to accommodate the planned Cemetery Wall Trail. These changes require the approval of the Commonwealth Transportation Board (CTB) pursuant to §33.2-401 of the *Code of Virginia*, and Title 24, Agency 30, Chapter 401 of the *Virginia Administrative Code*.

Facts:

- The State Highway Commission, predecessor to the CTB agreed by resolution on March 24, 1955, to take over and maintain those roads set forth in the Bureau of Public Roads letter of February 9, 1955 described as the Pentagon Network of Roads (Pentagon Roadway Network) and Route 350 (Shirley Memorial Highway) in Arlington County, including the controlled access features.
- The State Highway Commission, predecessor to the CTB on January 30, 1966 converted / renumbered Route 350 (Shirley Memorial Highway) to I-95, as a result of Project 0095-100-101, RW-201, C-501 between the Arlington County Line and the Potomac River in Arlington County. The interchange of Route 27 (Washington Boulevard) and Route 244 (Columbia Pike), being a portion of said project, was also designated as I-95.
- The American Association of State Highway Transportation Officials approved the renumbering of I-95 in this area to I-395 on November 12, 1976.
- The CTB approved limited access control changes at the I-395, Route 27 (Washington Boulevard) at Route 244 (Columbia Pike) Interchange on February 16, 2011, as a result of a request by the U.S Army Corps of Engineers (USACE) for its project to reconfigure the entrance to the Arlington National Cemetery Facilities Maintenance Complex Phase II.
- The Arlington National Cemetery Southern Expansion (ANCSE) project is relocating Route 244 (Columbia Pike) from approximately South Oak Street to the interchange with Route 27 (Washington Boulevard) near the Pentagon in Arlington County. The interchange of Route 27 (Washington Boulevard)/Route 244 (Columbia Pike) is within the limits of the

CTB Decision Brief

Proposed Limited Access Control Changes (LACCs)

Interstate 395 and Route 27 (Washington Boulevard) at Route 244 (Columbia Pike) Interchange
ANCSE; FHWA-EFLHD DAR Project

Arlington County

May 20, 2020

Page 2 of 4

Limited Access Highway and is being reconfigured to reduce its footprint so that Arlington National Cemetery expansion can maximize the interment area.

- The realignment of Route 244 (Columbia Pike) and Route 27 (Washington Boulevard) interchange is being carried out by the Federal Highway Administration-Eastern Federal Lands Highway Division (FHWA-EFLHD) under the Defense Access Road (DAR) program, FHWA-EFLHD DAR Project VA ST ANC(1); State Highway Project 0244-000-908, P101, R201, C501 (UPC# 116717).
- The FHWA-EFLHD DAR Project VA ST ANC(1) (the “Project”) reconfigures the interchange to provide a tight diamond layout with a one-lane ramp exiting Route 27 (Washington Boulevard) and widening to provide three turn lanes at its intersection with Route 244 (Columbia Pike), and a one-lane ramp exiting Route 244 (Columbia Pike) to enter Route 27 (Washington Boulevard). Improvements include curb and gutter, paved shoulders, a signalized intersection on Route 244 (Columbia Pike) at the Route 27 (Washington Boulevard) ramps, sidewalks on both sides of Route 244 (Columbia Pike), a shared use path on the north side of Route 244 (Columbia Pike) and Route 27 (Washington Boulevard) within the area designated as limited access with provisions for a northern extension to accommodate the planned Cemetery Wall Trail. The Route 244 (Columbia Pike) improvements extend west of South Joyce Street to the entrance to the Virginia Department of Transportation (VDOT) maintenance facility. These improvements will impact the existing limited access control lines, as shown on the Limited Access Line Exhibit and the Limited Access Control Point Stations and Offsets Table (attached).
- The FHWA-EFLHD held a Design Public Hearing (“Hearing”) for the Project, including a presentation on the current and proposed locations of the limited access lines, on Tuesday, February 11, 2020, between 6:30 pm and 8:30 pm at the Sheraton Pentagon City Hotel, 900 South Orme Street, Arlington, Virginia 22204, and allowed public input to be collected concerning the LACC request.
- Proper notice of the Hearing was given in advance, and all those present were given a full opportunity to express their opinions and recommendations for or against the Project as presented, their statements being duly recorded.
- The economic, social, and environmental effects of the Project have been duly examined and given proper consideration, and this evidence, along with all other relevant evidence has been carefully reviewed.
- The VDOT Northern Virginia District Office has reviewed and approved the Interchange Modification report on March 19, 2020, and found that it adequately addresses the impacts from the Project and the proposed LACCs.

CTB Decision Brief

Proposed Limited Access Control Changes (LACCs)

Interstate 395 and Route 27 (Washington Boulevard) at Route 244 (Columbia Pike) Interchange
ANCSE; FHWA-EFLHD DAR Project

Arlington County

May 20, 2020

Page 3 of 4

- The Project is in compliance with National Environmental Policy Act requirements, and an Environmental Assessment (EA) was prepared by the USACE for the Project, in coordination with the Federal Highway Administration (FHWA), VDOT, U.S. Environmental Protection Agency, the National Capital Planning Commission, and Arlington County. The Arlington National Cemetery approved the Finding of No Significant Impact (FONSI) for the ANCSE on December 12, 2019 and the FONSI for the DAR Project VA ST ANC(1) was approved by FHWA–EFLHD on March 27, 2020.
- The Project is located in the Metro Washington Air Quality Committee Region and is designated as an “attainment area” for the National Ambient Air Quality Standards for the criteria pollutants NO₂, SO₂, Pb, PM₁₀, and PM_{2.5}. The region is designated as a marginal “non-attainment area” for O₃ and classified as a “maintenance area” for CO. As part of the EA for the Project, ambient air quality was addressed by the USACE and it was determined that the Project does not create air quality concerns.
- The Project is in Arlington County and is supported by letters from the Department of the Army Director of Engineering dated February 19, 2020 and the Arlington County Division of Transportation Director dated March 18, 2020.
- The FHWA has provided the approval for the FHWA-EFLHD DAR Project VA ST ANC(1); State Highway Project 0244-000-908, P101, R201, C501 (UPC# 116717) and the proposed LACCs in a letter dated April 22, 2020.
- The Chief Engineer has determined that the proposed LACCs will not adversely affect the safety or operation of the highways.
- The proposed LACCs are in compliance with §33.2-401 of the *Code of Virginia* and with the polices and requirements of the CTB contained in Title 24, Agency 30, Chapter 401 of the *Virginia Administrative Code*.

Recommendations: It is recommended, pursuant to §33.2-401 of the *Code of Virginia*, and Title 24, Agency 30, Chapter 401 of the *Virginia Administrative Code*, that the Route 27 (Washington Boulevard) and Route 244 (Columbia Pike) Interchange continue to be designated as a Limited Access Highway with the LACCs modified and/or established as shown on the Limited Access Line Exhibit and the Limited Access Control Point Stations and Offsets Table (attached). This action will modify the limited access lines and right of way previously approved by the CTB on February 16, 2011.

Action Required by CTB: The *Code of Virginia* §33.2-401 and Title 24, Agency 30, Chapter 401 of the *Virginia Administrative Code* require a majority vote of the CTB to approve the recommended LACCs. The CTB will be presented with a resolution for a formal vote to approve the LACCs for the Project and to provide the Commissioner of Highways the requisite authority

CTB Decision Brief
Proposed Limited Access Control Changes (LACCs)
Interstate 395 and Route 27 (Washington Boulevard) at Route 244 (Columbia Pike) Interchange
ANCSE; FHWA-EFLHD DAR Project
Arlington County
May 20, 2020
Page 4 of 4

to execute all documents necessary to implement the LACCs.

Result, if Approved: The Commissioner of Highways will be authorized to execute any and all documents needed to comply with the resolution, and the ANCSE; FHWA-EFLHD DAR Project will move forward.

Options: Approve, Deny, or Defer.

Public Comments/Reactions: There were ninety-seven (97) citizens that attended the Hearing per the sign in sheets. There were sixteen (16) written comments received. There were eleven (11) oral comments recorded by the court reporter. In addition, twenty-one (21) email comments and one (1) mailed-in comment were received by FHWA-EFLHD. The vast majority of comments included constructive suggestions and several comments expressed support for the Project. There were no comments expressing opposition to the Project.



COMMONWEALTH of VIRGINIA

Commonwealth Transportation Board

Sean T. Connaughton
Chairman

1401 East Broad Street - Policy Division - CTB Section - #1106
Richmond, Virginia 23219

(804) 786-1830
Fax: (804) 225-4700

Agenda item # 8

RESOLUTION OF THE COMMONWEALTH TRANSPORTATION BOARD

February 16, 2011

MOTION

Made By:Mr. Koelemay Seconded By:Mr. Layne Action: Motion Carried, Unanimously

**Title: Limited Access Control Changes (LACC),
Interstate 95, Washington Boulevard (Route 27) at Columbia Pike (Route 244) Interchange
Arlington National Cemetery Facilities Maintenance Complex Phase II Project
Arlington County**

WHEREAS, Route 350 (Shirley Memorial Highway) was designated as a limited access highway by the State Highway Commission, predecessor to the Commonwealth Transportation Board (CTB), on August 24, 1944; and,

WHEREAS, Route 350 (Shirley Memorial Highway) was subsequently renumbered to Interstate 95; and,

WHEREAS, as a result of Project 0095-000-101, RW-201 between the Arlington County Line and the Potomac River in Arlington County, the Washington Boulevard (Route 27) and Columbia Pike (Route 244) Interchange, being a portion of said project was designated as a Limited Access Highway by the State Highway Commission, predecessor to the CTB, on October 4, 1956; and,

WHEREAS, in connection with the said Interstate, State Highway Projects 0095-000-101, RW-201, and 0095-000-103, RW-201, and the Pentagon Roadway Network, the Commonwealth acquired certain lands, and perpetual and limited access control easements from various landowners; and,

WHEREAS, the U.S. Army Corps of Engineers, Baltimore District (hereinafter COE) has contracted for the construction of a project for improvements to the Arlington National Cemetery known as Facilities Maintenance Complex Phase II; and,

Resolution of the Board
Limited Access Control Changes
Interstate 95, Washington Boulevard (Rte 27) at Columbia Pike (Rte 244) Interchange
Arlington National Cemetery Facilities Maintenance Complex Phase II Project
Arlington County
February 16, 2011
Page Two

WHEREAS, portions of the proposed construction fall within the right-of-way and limited access lines of the Washington Boulevard (Route 27) and Columbia Pike (Route 244) interchange; and,

WHEREAS, the COE has submitted a request for Limited Access Control Changes (LACC) consisting of a lateral shift of the current limited access control only to exclude the proposed perimeter security wall and grading for the said project from being within the limited access easement of the said interchange; and,

WHEREAS, the CTB approved granting the COE a permit to begin construction of the proposed perimeter security wall and grading within the limited access control on an at-risk basis on July 14, 2010, and indicated intent to approve future LACC pending completion and receipt of the detailed documentation for submission of the proposed LACC request; and,

WHEREAS, the Virginia Department of Transportation (VDOT) Northern Virginia (NoVa) District staff have received and reviewed the detailed documentation for the said lateral shift of the current limited access control and determined the features of the proposed construction will not adversely affect highway safety or operations, nor conflict with any planned or anticipated highway improvement, and recommended approval of the said proposed shift; and,

WHEREAS, VDOT has determined that as the said proposed LACC is to accommodate a Federal project with no changes in the operation of the highway system occurring, and that the said wall location and proposed design will accommodate the Arlington National Cemetery Wall Trail, which has been coordinated with and included in the Arlington County Master plan, no further documentation of locality support is required for the said request; and,

WHEREAS, the COE has identified and requested LACC consisting of a southeast shift of the limited access control, as shown on the plans for State Highway Project 0095-000-101, RW-201, located adjacent to Ramp BC of the Washington Boulevard (Route 27) and Columbia Pike (Route 244) Interchange between southbound Washington Boulevard (Route 27) and westbound Columbia Pike (Route 244) beginning at a point 70.81 feet opposite Station 18+56.55 (Ramp BC baseline), thence to a point 34.18 feet opposite Station 19+14.72 (Ramp BC baseline), thence to a point 30.29 feet opposite Station 19+35.76 (Ramp BC baseline), thence to a point 29.88 feet opposite Station 20+87.48 (Ramp BC baseline), thence to a point 29.20 feet opposite Station 21+97.29 (Ramp BC baseline), thence to a point 23.70 feet opposite Station 23+19.78 (Ramp BC baseline), thence to a point 19.89 feet opposite Station 28+0.88 (Ramp BC baseline) being the terminus of limited access control along the said ramp; and,

Resolution of the Board
Limited Access Control Changes
Interstate 95, Washington Boulevard (Rte 27) at Columbia Pike (Rte 244) Interchange
Arlington National Cemetery Facilities Maintenance Complex Phase II Project
Arlington County
February 16, 2011
Page Three

WHEREAS, public notices were posted in the *Washington Post* newspaper on July 9, and 14, 2010; and the *District Chronicles* newspaper on July 15, 2010, and closed on July 20, 2010, with no comment received; and,

WHEREAS, VDOT and the Federal Highway Administration (FHWA) have determined that the said LACC is appropriate from a design standpoint, as the said proposed LACC does not impact the operation of any highway system; and,

WHEREAS, an environmental analysis was prepared and reviewed, and VDOT has determined there will be no adverse environmental impacts resulting from the LACC, and an Air Quality Conformity Review is not warranted; and,

WHEREAS, VDOT has determined that with the said proposed LACC being for accommodation of a Federal project with no changes in the operation of the highway system occurring as a result, the Global Traffic Analysis is not applicable; and,

WHEREAS, the District Administrator for VDOT's NoVa District has reviewed the staff recommendations for the proposed LACC, and supports the request; and,

WHEREAS, all costs of any plans, or engineering and construction of any safety improvements as determined necessary by VDOT will be borne by the COE; and,

WHEREAS, VDOT has determined that any just compensation due in consideration of the proposed LACC will be made for a consideration satisfactory to the State Director, Right of Way and Utilities Division; and,

WHEREAS, the proposed LACC is in compliance with Title 24, Section 30, Chapter 401 of the Virginia Administrative Code; and,

WHEREAS, upon completion and acceptance of construction to include any safety improvements resulting from the proposed LACC, as determined necessary by VDOT, any work, construction, improvements and equipment relating to the roadway shall become or remain the property of the Commonwealth and any work, construction, improvements and equipment relating to the said Arlington National Cemetery Project will become or remain the property of the Arlington National Cemetery.

Resolution of the Board
Limited Access Control Changes
Interstate 95, Washington Boulevard (Rte 27) at Columbia Pike (Rte 244) Interchange
Arlington National Cemetery Facilities Maintenance Complex Phase II Project
Arlington County
February 16, 2011
Page Four

NOW, THEREFORE, BE IT RESOLVED, the CTB finds and concurs with the determinations made by VDOT for Global Traffic Analysis, Air Quality Conformity Review and locality support; and in accordance with the provisions of Section 33.1-58 of the *Code of Virginia* (1950), as amended, the CTB hereby approves the said LACC as set forth herein and subject to Title 24, Section 30, Chapter 401 of the Virginia Administrative Code and the above referred to conditions. The Commonwealth Transportation Commissioner is hereby authorized to execute any and all documents needed to comply with this resolution.

###

Moved by Mr. MacIs, seconded by Senator Wright, that the following resolution be adopted:

WHEREAS, on December 9, 1954 the Bureau of Public Roads submitted to the State Highway Department a proposal for the State Highway Department to take over and maintain certain roads, including the controlled access features thereof, which were built as Defense Access projects by the Bureau of Public Roads in Arlington County, provided that the Bureau do certain resurfacing, widening and other improvements, and WHEREAS, on February 9, 1955 the Bureau of Public Roads by letter to the Department of Highways set forth the roads requested to be taken over and maintained, and the details of the resurfacing, widening and other improvements agreed to be accomplished on some prior to such taking over and maintenance by the State Highway Department, and WHEREAS, on March 8, 1955 the Bureau of Public Roads by letter to the Department assured the Department that the necessary right of way would be obtained for the grade separation at the intersection of Washington Boulevard and entrance to Fort Myer, Virginia in order to permit unconditional compliance with the Bureau of Public Roads' agreement to provide grade separation structure at the aforesaid intersection, and WHEREAS, on March 17, 1955 the Department of Highways, by letter to the Bureau of Public Roads, notified said Bureau that the Department in light of the assurance in the Bureau's letter of March 8, 1955 that it would obtain the necessary right of way for the grade separation at the intersection of Washington Boulevard and entrance to Fort Myer, Virginia considered itself and the Bureau to be in accord and agreement on the items of work to be performed and the roadways requested to be taken over and maintained, now, therefore BE IT RESOLVED: That those roads set forth in the Bureau of Public Roads' letter of February 9, 1955 described as the Pentagon Network of roads and the Shirley Highway in Arlington County, including the controlled access features thereof, be taken over and maintained by the Department of Highways provided and conditioned upon the Bureau of Public Roads' completion of the items of work including resurfacing, widening and other improvements to the above described network of roads as set forth in the Bureau's letters of February 9, 1955 and March 8, 1955, and its conveyance to the Commonwealth of the title to the right of way of such roads by a notes and bounds description of said right of way, including in such notes and bounds description of the property to be transferred to the Commonwealth of Virginia, the building now occupied by the maintenance forces of the Bureau, together with the adjacent equipment area. Motion carried.

A full statement regarding comparison of revenues for 1954-1955 and 1955-1956 was presented to the Members of the Commission, together with a statement of estimated revenue for 1955-1956. Mr. Marys read to the Commission his report of March 22 on the 1955-56 allocations. This report covered revenues, appropriations, the Department's activities, secondary system, urban system, primary system and recommended primary construction allocations.

Moved by Judge Weaver, Seconded by Mr. McWens,
that

WHEREAS, in connection with Route 350, State Highway Project 1400-C, the Shirley Memorial Highway, now in the City of Alexandria but then a part of Fairfax County, The Commonwealth did acquire certain lands for the construction and operation of Route 236, Duke Street, and its connection with said Route 350; and

WHEREAS, said Route 350 is now being converted into Interstate Route 95 under State Highway Project 0095-100-101, RW-201, C-501, and an agreement has been reached with the owner or owners of the lands constituting the Landmark Shopping Center at the northeast corner of the intersection of said Routes 350 and 236, which agreement provides in part that certain portions of the lands so acquired and used now in connection with said Route 236 are to be conveyed to the owners of the adjoining lands in exchange for the additional lands needed from their property and the said Landmark Shopping Center for the construction of said Route 95, and its connections with said Route 236; and

WHEREAS, the State Highway Commissioner has certified in writing that that portion of the lands so acquired and lying north of the new north right of way line of said Route 236, Duke Street, from its intersection with the east right of way line of said Route 95 in an easterly direction and contiguous to the said Landmark Shopping Center, and containing 1.558 acres, more or less, after the opening of relocated Route 236 to traffic will not constitute a section of the public road and is deemed by him no longer necessary then for the uses of the State Highway System.

NOW, THEREFORE, in accordance with the provisions of Section 33-76.6 of the 1950 Code of Virginia as amended this Commission hereby approves conveyance of the lands so certified to the owner or owners of record of the adjoining lands to the north in exchange for the additional land needed from the Landmark Shopping Center property for the construction of Route 95 and its connection with Route 236, and the State Highway Commissioner, after the opening of relocated Route 236 to traffic has taken place, is authorized to execute a deed or deeds in the name of the Commonwealth conveying same without warranty to the owner or owners of record of the adjoining lands.

Motion carried.



COMMONWEALTH of VIRGINIA

DEPARTMENT OF TRANSPORTATION
1401 EAST BROAD STREET
RICHMOND, VIRGINIA 23219-2000

Stephen Brich
Commissioner

April 22, 2020

Mr. Thomas L. Nelson, Jr., P.E.
Division Administrator
Federal Highway Administration
400 N. 8th Street Room 750
Richmond, Virginia 23240-0249

Attention: Ms. Janice L. Richard

Interstate I-395
Washington Boulevard / Columbia Pike Interchange
Project 0244-000-908, P101, R201, R201, C501
Federal Project #: NHPP-5B01(140)
UPC #: 116717

Request for Modified Limited Access

Dear Mr. Nelson,

The Virginia Department of Transportation (VDOT) is administering The Arlington National Cemetery Southern Expansion (ANCSE) project to relocate Route 244 (Columbia Pike) from approximately South Oak Street to the interchange with Route 27 (Washington Boulevard) near the Pentagon in Arlington County.


The purpose of the project is to reconfigure the existing intersection to reduce its footprint so the Cemetery expansion can maximize interment area and to improve multimodal transportation safety and operations through this corridor.

The project is being developed by the Federal Highway Administration (FHWA) Eastern Federal Lands Highway Division (EFLHD) for the U.S. Army Corps of Engineers (USACE) under the Defense Access Road (DAR) program.

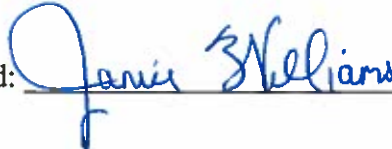
Mr. Thomas L. Nelson, Jr., P.E.
State Project #:0244-000-908, P101, R201, R201, C501
Arlington County
Page 2 of 2

VDOT has reviewed the proposed changes with the FHWA Area Engineer and now asks for the approval for the changes in Limited Access as shown on the attached Exhibit.

Should you have any questions, please contact Mr. Theron Knouse, P.E. (Assistant State Location and Design Engineer) at (804) 371-2792.

 Susan H Keen
2020.04.22
15:32:32-04'00'

Susan H. Keen, P.E.
State Location and Design Engineer

Approved:  Date 4-23-2020

Attachments



COMMONWEALTH of VIRGINIA

DEPARTMENT OF TRANSPORTATION

1401 East Broad Street
Richmond, Virginia 23219 2000

Stephen Brich
Commissioner

May 1, 2020

The Honorable Shannon Valentine
The Honorable Stephen C. Brich, P. E.
The Honorable Jennifer Mitchell
The Honorable Jerry L. Stinson II
The Honorable Mary Hughes Hynes
The Honorable Allison DeTuncq
The Honorable Bert Dodson, Jr.
The Honorable W. Sheppard Miller III
The Honorable Carlos M. Brown
The Honorable Cedric Bernard Rucker
The Honorable Stephen A. Johnsen
The Honorable F. Dixon Whitworth, Jr.
The Honorable E. Scott Kasprovicz
The Honorable Raymond D. Smoot, Jr.
The Honorable Marty Williams
The Honorable John Malbon
The Honorable Greg Yates

Subject: Approval of Limited Access Control Changes (LACCs) for Interstate 395 and Route 27 (Washington Boulevard) at Route 244 (Columbia Pike) Interchange for the Arlington National Cemetery Southern Expansion (ANCSE); Federal Highway Administration - Eastern Federal Lands Highway Division (FHWA - EFLHD) Defense Access Road (DAR) Project VA ST ANC(1) in Arlington County.

Dear Commonwealth Transportation Board Members:

The Department has initiated the above request for LACCs for your consideration. The proposed LACCs on State Highway Project 0244-000-908, P101, R201, R201, C501 have been determined as a necessary design feature and recommended for approval by the Department's staff.

I have reviewed the staff's recommendations and determined that approving these LACC's will not adversely affect the safety or operations of the affected highway network. I have determined that this request should be considered by the Board.

Sincerely,

Barton A. Thrasher, P.E.
Chief Engineer



DEPARTMENT OF ENVIRONMENTAL SERVICES
Division of Transportation and Development Services

2100 Clarendon Boulevard, Suite 900, Arlington, VA 22201
TEL 703-228-3344 FAX 703-228-3594 www.arlingtonva.us

March 18, 2020

Ms. Helen Cuervo, P.E.
District Engineer
Virginia Department of Transportation
4975 Alliance Drive
Fairfax, Virginia 22030

Dear Ms. Cuervo,

I am writing with regard to the realignment of Columbia Pike, Route 244 and the interchange improvements at Washington Boulevard, Route 27, as shown on FHWA-EFLHD Project Number VA ST ANC(1), which is VDOT Project (UPC number to be assigned).

Arlington County supports the design as presented to the public during the Public Meeting held on February 11, 2020. Further, Arlington County understands that the design of the improvements will require an adjustment to the limited access control line along Route 27 westbound between Route 110 and Route 244.

Arlington County looks forward to the successful and efficient management of this project, with the least disruption to County transportation, through to its completion. Please let me know if you need any further information from Arlington County to present this project for approval to the Commonwealth Transportation Board.

Sincerely,

A handwritten signature in blue ink, appearing to read "Dennis M. Leach".

Dennis M. Leach, Director
Division of Transportation

cc: Timothy Hartzell, VDOT
Nicholas Roper, VDOT
Thomas Shifflett, FHWA/EFLHD
Mike Albright, Kimley Horn



DEPARTMENT OF ENVIRONMENTAL SERVICES
Division of Transportation and Development Services

2100 Clarendon Boulevard, Suite 900, Arlington, VA 22201
TEL 703-228-3344 FAX 703-228-3594 www.arlingtonva.us

March 18, 2020

Ms. Helen Cuervo, P.E.
District Engineer
Virginia Department of Transportation
4975 Alliance Drive
Fairfax, Virginia 22030

Dear Ms. Cuervo,

I am writing with regard to the realignment of Columbia Pike, Route 244 and the interchange improvements at Washington Boulevard, Route 27, as shown on FHWA-EFLHD Project Number VA ST ANC(1), which is VDOT Project (UPC number to be assigned).

Arlington County supports the design as presented to the public during the Public Meeting held on February 11, 2020. Further, Arlington County understands that the design of the improvements will require an adjustment to the limited access control line along Route 27 westbound between Route 110 and Route 244.

Arlington County looks forward to the successful and efficient management of this project, with the least disruption to County transportation, through to its completion. Please let me know if you need any further information from Arlington County to present this project for approval to the Commonwealth Transportation Board.

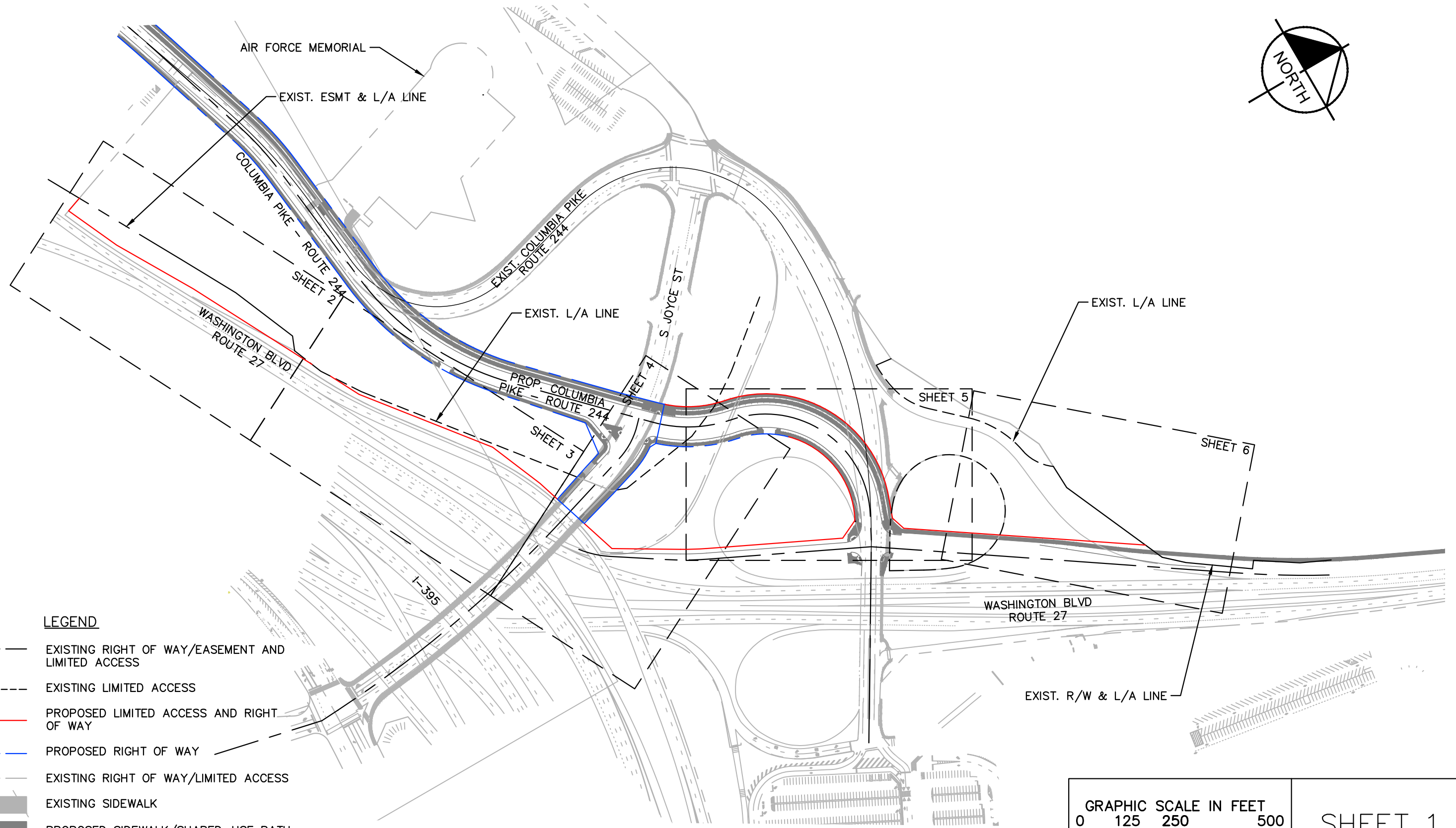
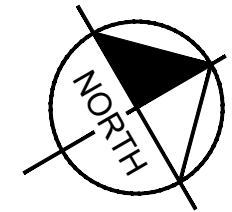
Sincerely,

A handwritten signature in blue ink, appearing to read "Dennis M. Leach".

Dennis M. Leach, Director
Division of Transportation

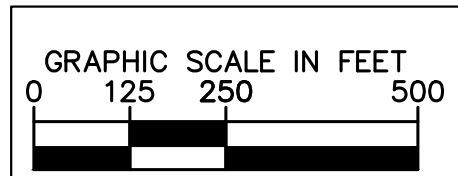
cc: Timothy Hartzell, VDOT
Nicholas Roper, VDOT
Thomas Shifflett, FHWA/EFLHD
Mike Albright, Kimley Horn

PROPOSED LIMITED ACCESS CONTROL CHANGE FOR PROJECT



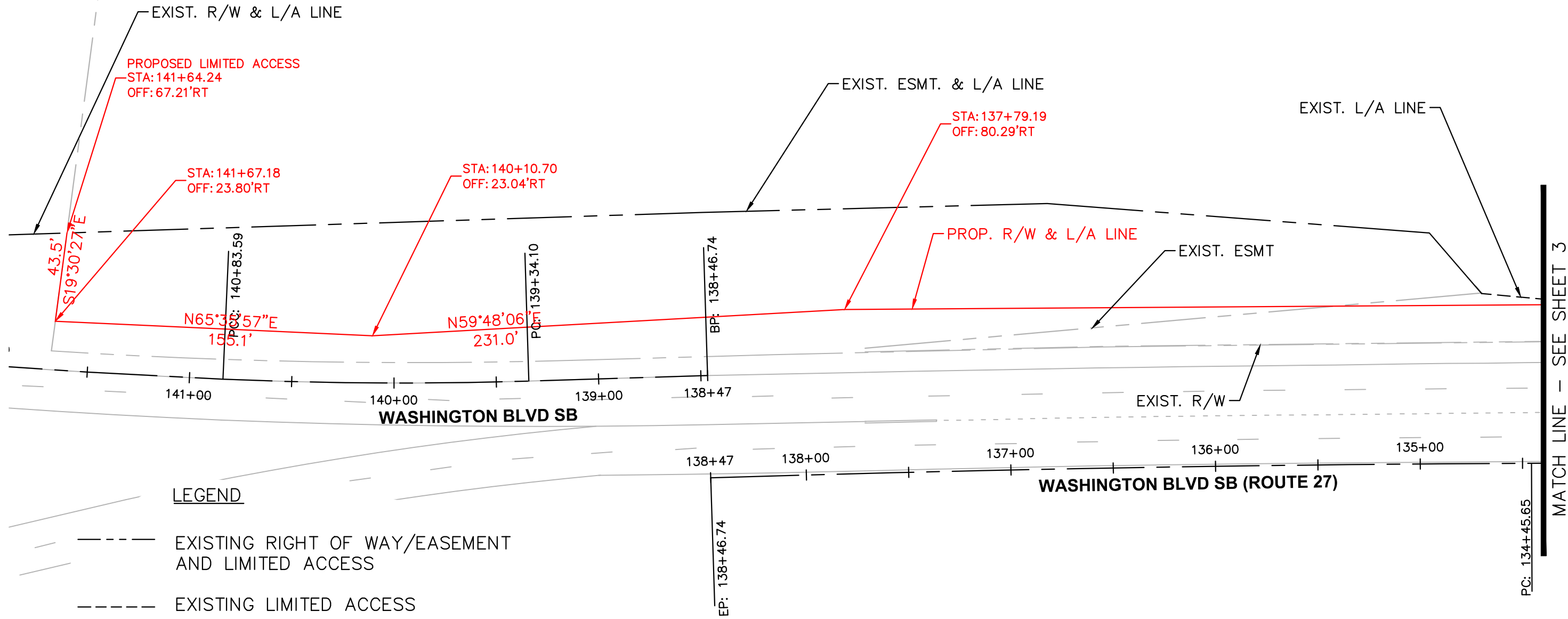
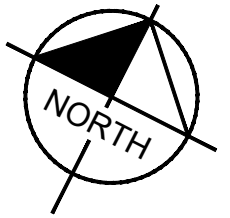
LEGEND

- EXISTING RIGHT OF WAY/EASEMENT AND LIMITED ACCESS
- EXISTING LIMITED ACCESS
- PROPOSED LIMITED ACCESS AND RIGHT OF WAY
- PROPOSED RIGHT OF WAY
- EXISTING RIGHT OF WAY/LIMITED ACCESS
- EXISTING SIDEWALK
- PROPOSED SIDEWALK/SHARED-USE PATH










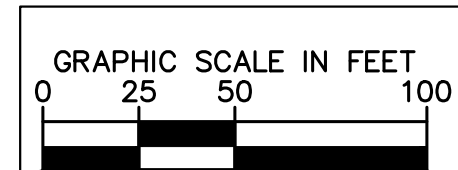
SHEET 1

PROPOSED LIMITED ACCESS CONTROL CHANGE FOR PROJECT



LEGEND

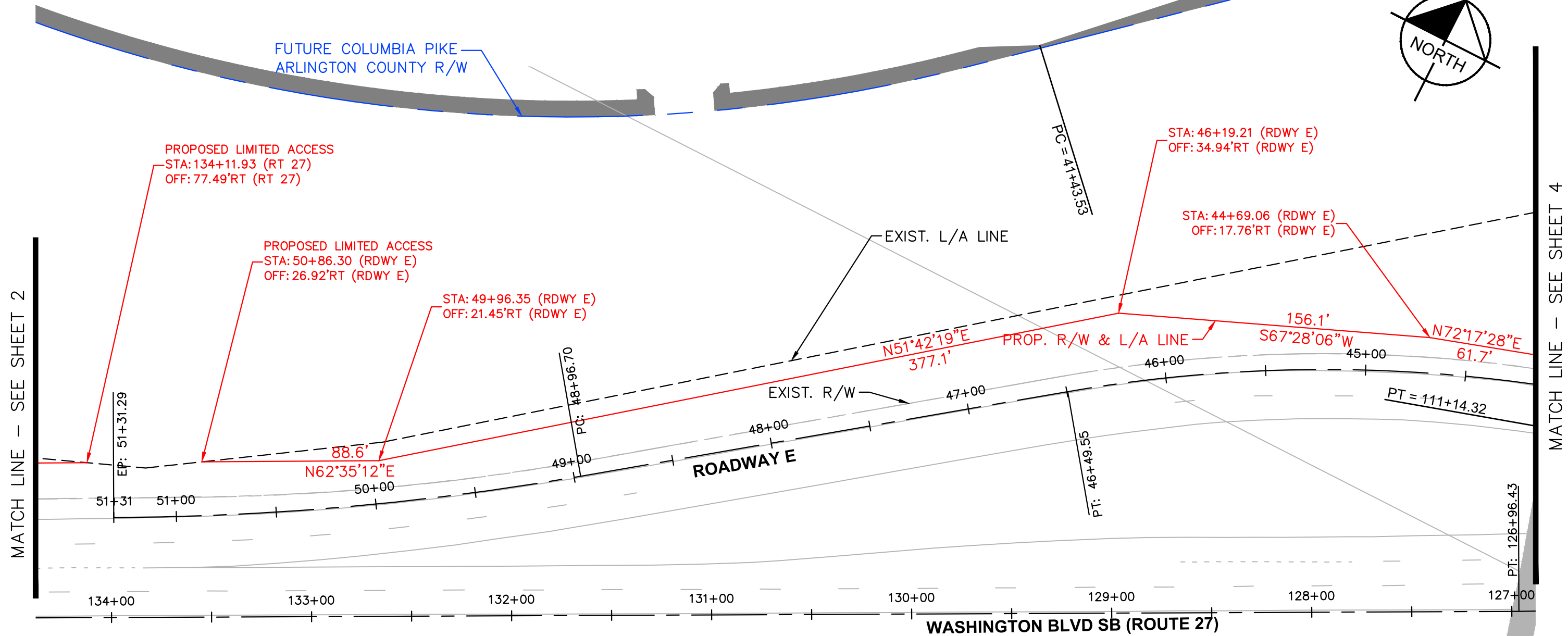
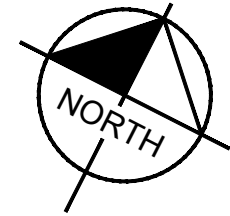
-  EXISTING RIGHT OF WAY/EASEMENT AND LIMITED ACCESS
-  EXISTING LIMITED ACCESS
-  PROPOSED LIMITED ACCESS AND RIGHT OF WAY
-  PROPOSED RIGHT OF WAY
-  EXISTING RIGHT OF WAY/EASEMENT
-  EXISTING SIDEWALK
-  PROPOSED SIDEWALK/SHARED-USE PATH



SHEET 2

MATCH LINE - SEE SHEET 3



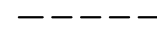




PROPOSED LIMITED ACCESS CONTROL CHANGE FOR PROJECT

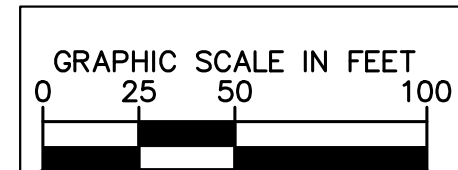


MATCH LINE - SEE SHEET 2

MATCH LINE - SEE SHEET 4

LEGEND

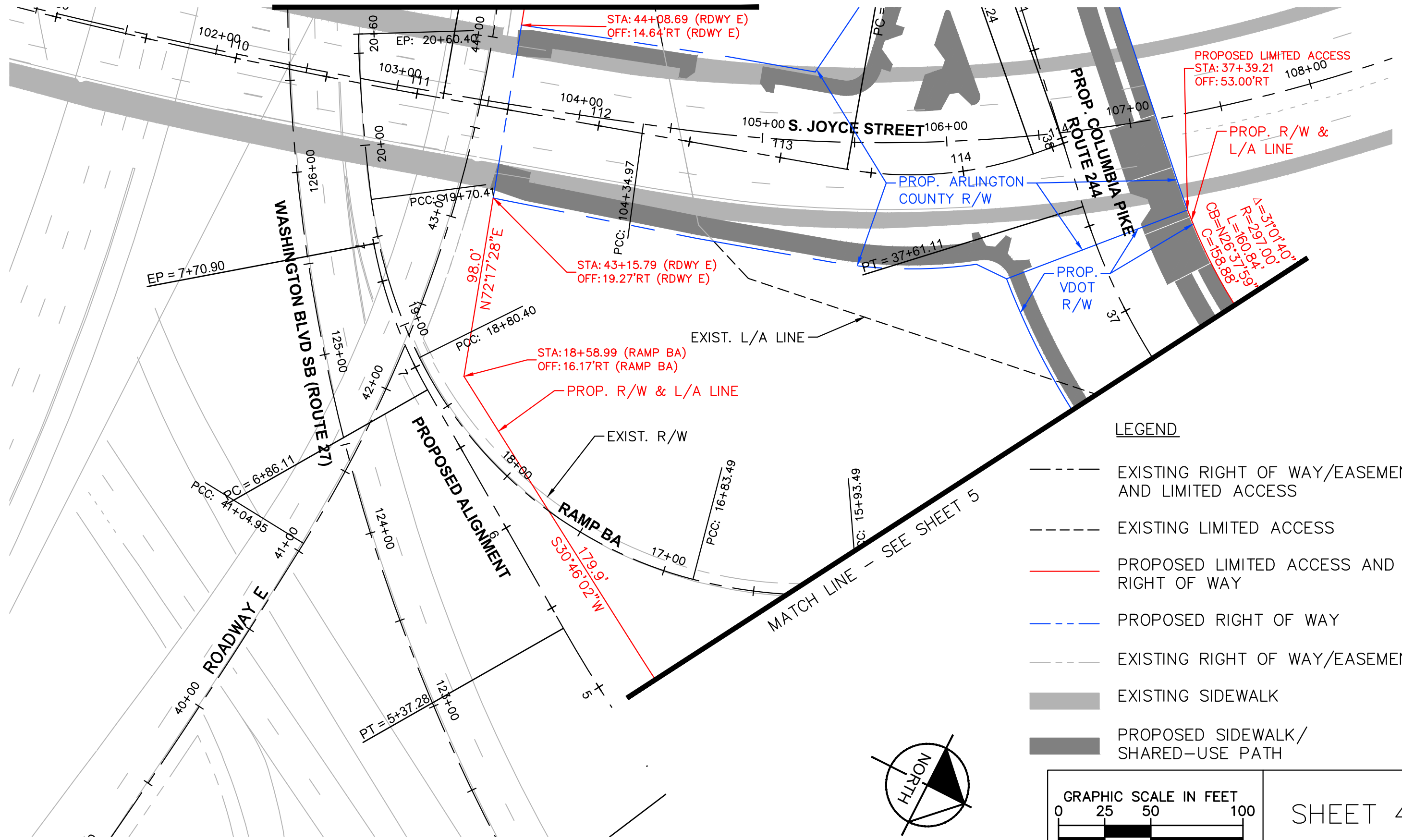
- | | | | |
|---|---|---|-----------------------------------|
|  | EXISTING RIGHT OF WAY/EASEMENT AND LIMITED ACCESS |  | EXISTING RIGHT OF WAY/EASEMENT |
|  | EXISTING LIMITED ACCESS |  | EXISTING SIDEWALK |
|  | PROPOSED LIMITED ACCESS AND RIGHT OF WAY |  | PROPOSED SIDEWALK/SHARED-USE PATH |
|  | PROPOSED RIGHT OF WAY | | |



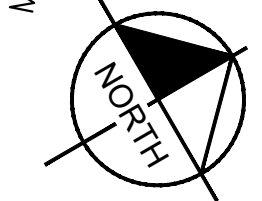
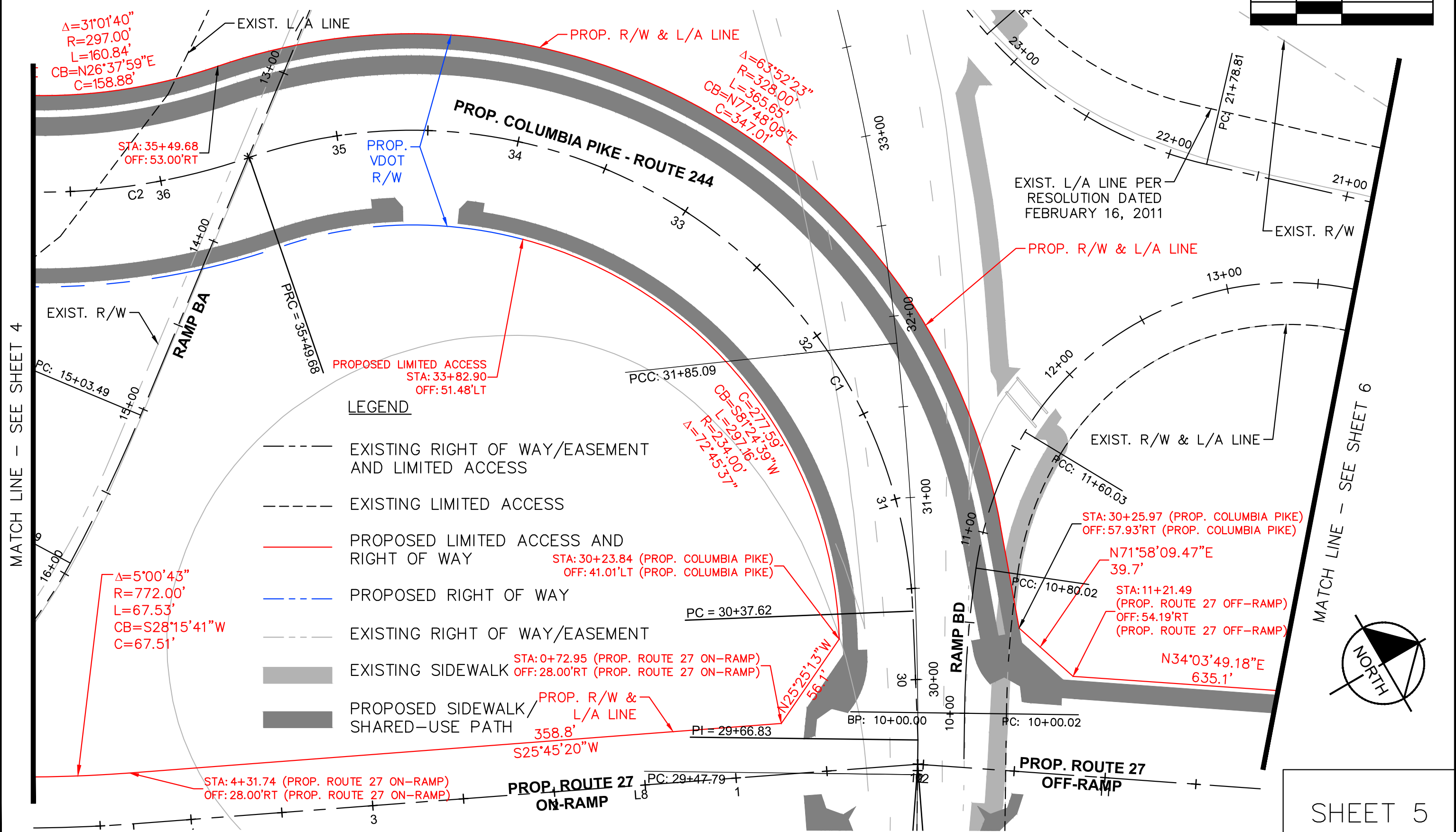
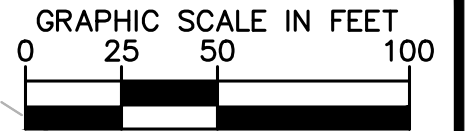
SHEET 3

PROPOSED LIMITED ACCESS CONTROL CHANGE FOR PROJECT

MATCH LINE - SEE SHEET 3

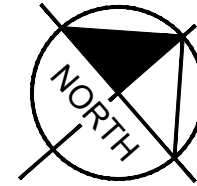









PROPOSED LIMITED ACCESS CONTROL CHANGE FOR PROJECT



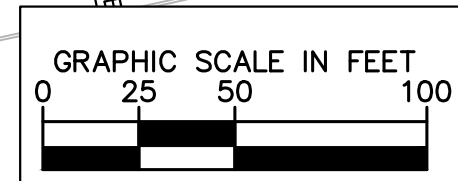
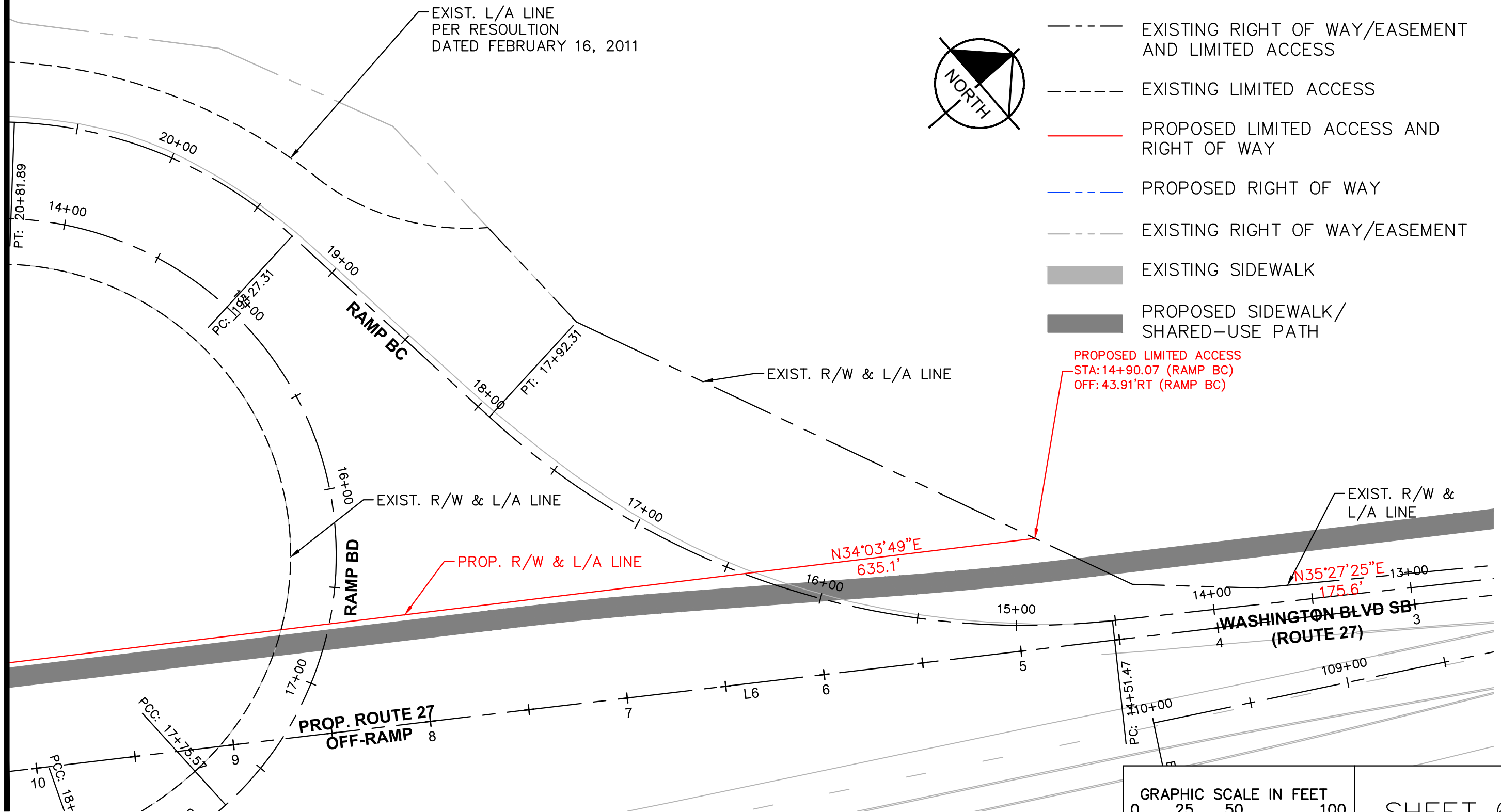
PROPOSED LIMITED ACCESS CONTROL CHANGE FOR PROJECT

LEGEND



-  EXISTING RIGHT OF WAY/EASEMENT AND LIMITED ACCESS
-  EXISTING LIMITED ACCESS
-  PROPOSED LIMITED ACCESS AND RIGHT OF WAY
-  PROPOSED RIGHT OF WAY
-  EXISTING RIGHT OF WAY/EASEMENT
-  EXISTING SIDEWALK
-  PROPOSED SIDEWALK/SHARED-USE PATH

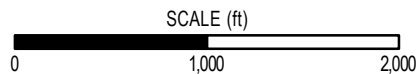
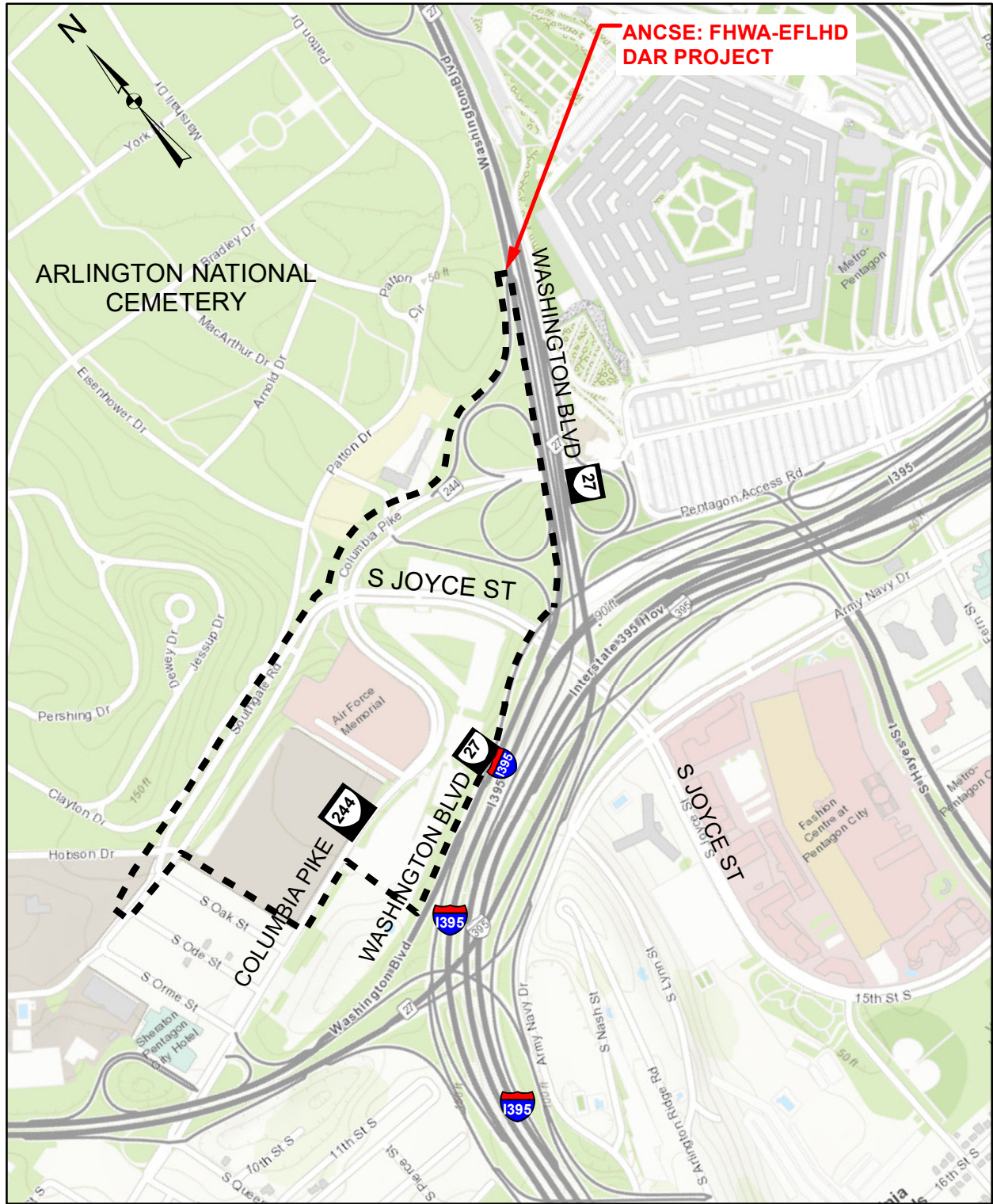
MATCH LINE - SEE SHEET 5



SHEET 6

LOCATION MAP

COUNTY OF ARLINGTON



Sheet Reference	Line ID	Baseline Reference	Station	Offset	Northing	Easting	Notes
Sheet 2	Prop. R/W and L/A Line	Washington Blvd SB	137+79.19	80.29 RT	7001831.95	11890987.01	
	Prop. R/W and L/A Line	Washington Blvd SB	140+10.70	23.04 RT	7001715.73	11890787.32	
	Prop. R/W and L/A Line	Washington Blvd SB	141+67.64	23.79 RT	7001651.46	11890645.64	
	Prop. R/W and L/A Line	Washington Blvd SB	141+64.24	67.21 RT	7001692.66	11890631.53	Tie to Existing
Sheet 3	Prop. R/W and L/A Line	Roadway E	44+69.06	17.76 RT	7002362.51	11891884.24	
	Prop. R/W and L/A Line	Roadway E	46+19.21	34.94 RT	7002302.69	11891740.05	
	Prop. R/W and L/A Line	Roadway E	49+96.35	21.45 RT	7002069.03	11891444.12	
	Prop. R/W and L/A Line	Roadway E	50+86.30	26.92 RT	7002028.26	11891365.51	Tie to Existing
	Prop. R/W and L/A Line	Route 27	134+11.93	77.49 RT	7002001.84	11891314.58	Tie to Existing
Sheet 4	Prop. R/W and L/A Line	Proposed Columbia Pike	37+39.21	53.00 RT	7002748.54	11891868.32	End L/A Line
	Prop. R/W and L/A Line	Ramp BA	18+58.99	16.17 RT	7002440.00	11892126.93	
	Prop. R/W and L/A Line	Roadway E	43+15.79	19.27 RT	7002440.20	11892033.60	Break in L/A Line
	Prop. R/W and L/A Line	Roadway E	44+08.69	14.64 RT	7002381.81	11891942.90	Break in L/A Line
Sheet 5	Prop. R/W and L/A Line	Proposed Route 27 Off-Ramp	11+21.49	54.19 RT	7003128.66	11892464.78	
	Prop. R/W and L/A Line	Proposed Columbia Pike	30+25.97	57.93 RT	7003116.36	11892426.99	
	Prop. R/W and L/A Line	Proposed Columbia Pike	35+49.68	53.00 RT	7002890.56	11891939.54	
	Prop. R/W and L/A Line	Proposed Columbia Pike	33+82.90	51.48 LT	7002987.73	11892105.74	Begin L/A Line
	Prop. R/W and L/A Line	Proposed Columbia Pike	30+23.84	41.01 LT	7003027.85	11892382.73	
	Prop. R/W and L/A Line	Proposed Route 27 On-Ramp	+72.95	28.00 RT	7002977.17	11892406.81	
	Prop. R/W and L/A Line	Proposed Route 27 On-Ramp	4+31.74	28.00 RT	7002854.02	11892250.91	
Sheet 6	Prop. R/W and L/A Line	Ramp BC	14+90.07	43.91 RT	7003654.83	11892820.53	Tie to Existing

Limited Access Control Point Stations and Offsets Table
(ANCSE; FHWA-EFLHD DAR)