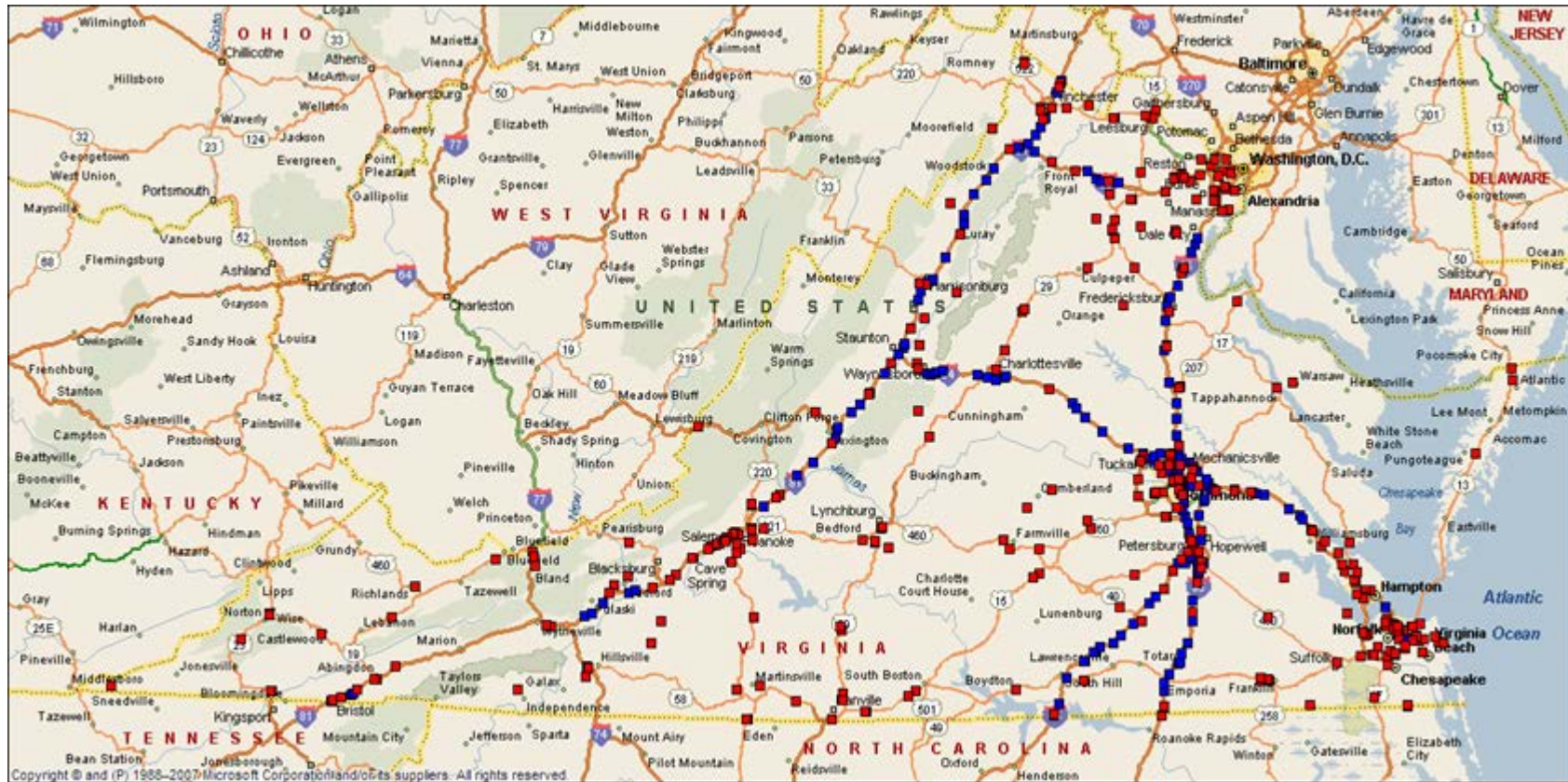


# COVID-19 Trends – CTB Update

## Volume & Crashes

# Volume Source

## VDOT Traffic Monitoring System (TMS)

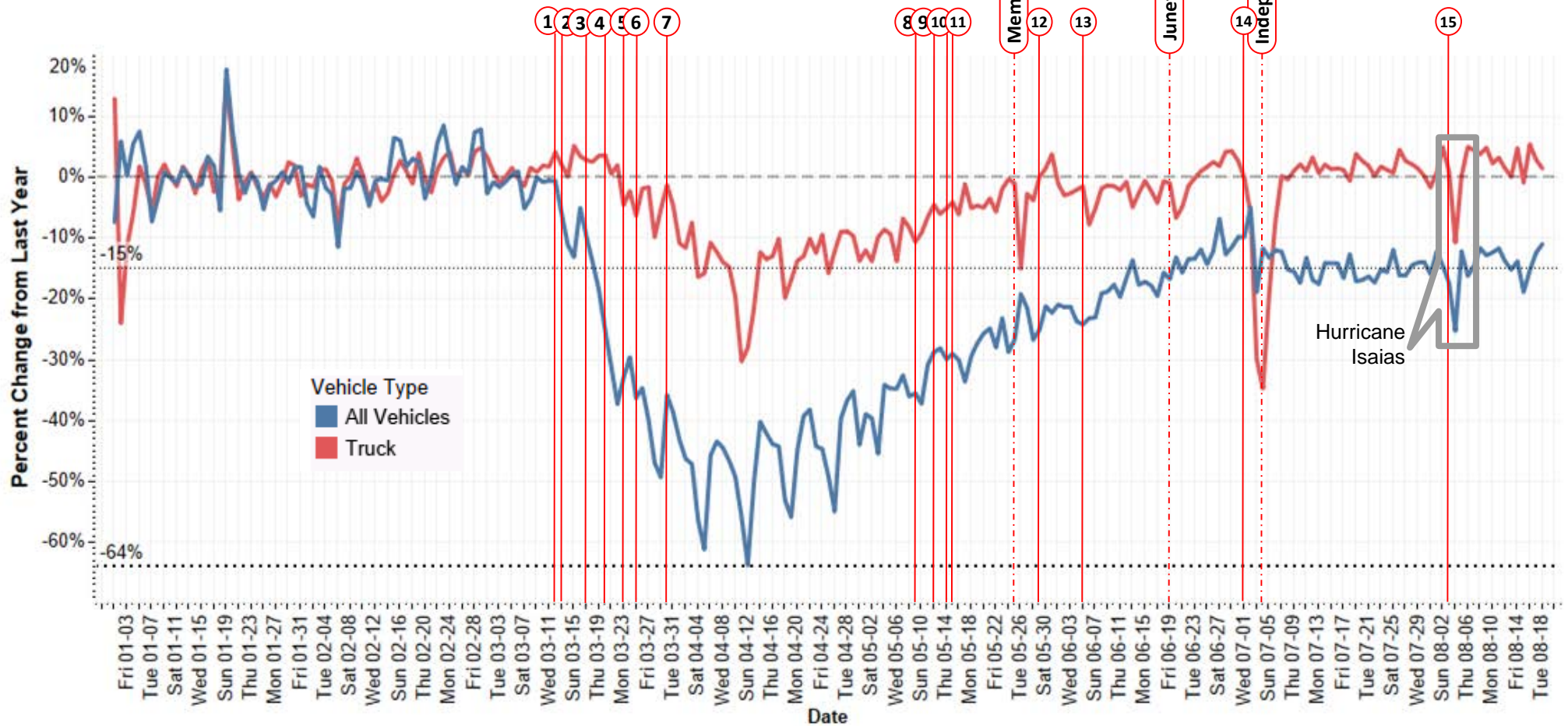


### 512 Continuous Count Stations

- 306 Road Sensors (CCS)
- 206 Non-Intrusive (Radar) Sensors (NCCS)

# Volume Trends

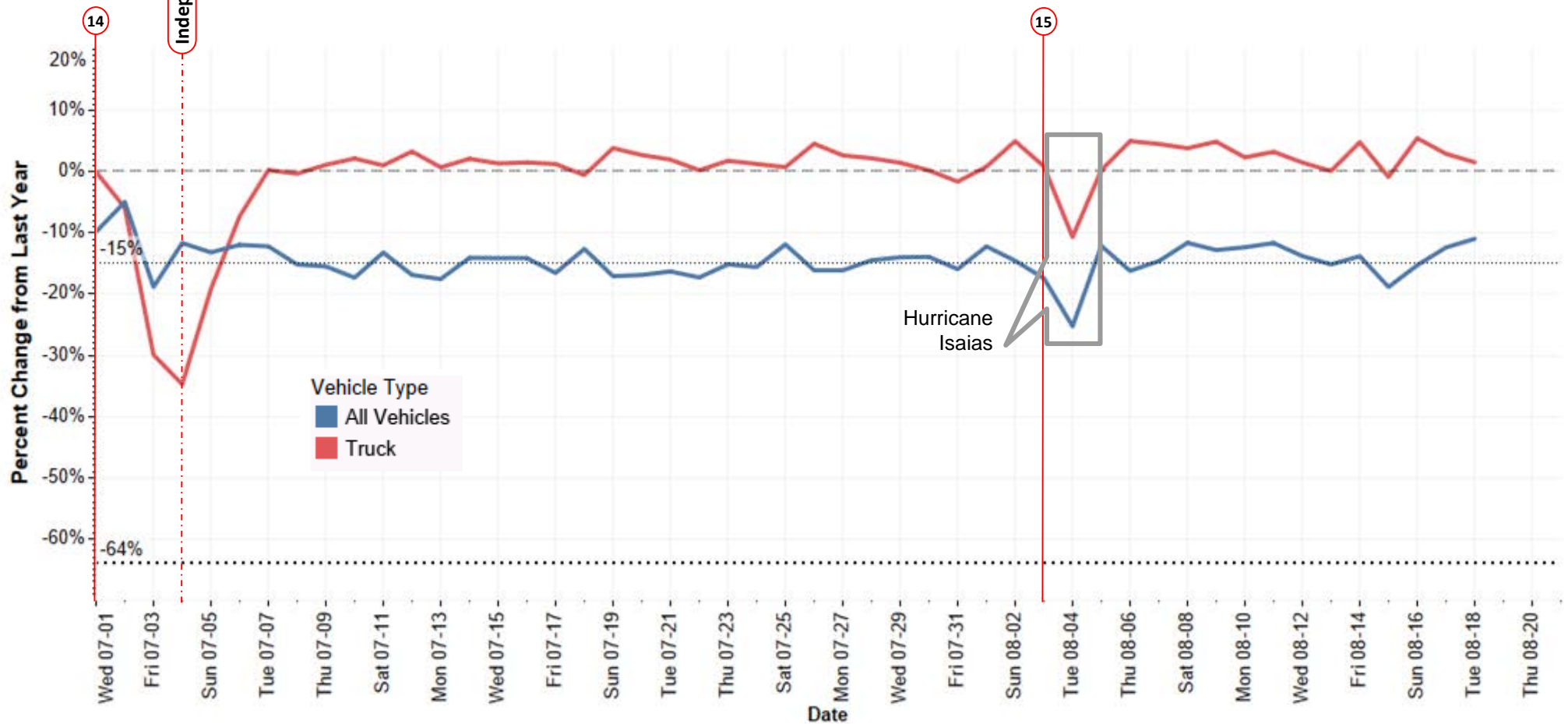
## STATEWIDE DAILY VOLUME CHANGE



#	Date	Governor Action	#	Date	Governor Action
1	3/12	Declares state of emergency	9	5/12	Delays Phase 1 for Northern Virginia Localities till 05/28
2	3/13	Closes schools for two weeks, beginning 3/16	10	5/14	Delays Phase 1 for Accomack County and the City of Richmond till 05/28
3	3/17	Advises to avoid non-essential gatherings of more than 10	11	5/15	Phase One Begins (NOVA, Richmond and Accomack in Ph Zero)
4	3/20	State agencies begin process of implementing telework where possible/applicable	12	5/29	Phase One Begins for NOVA, Richmond and Accomack (rest in ph two)
5	3/23	Close - Schools for rest of school yr, Non-essential business, Restaurants; No gathering more than 10	13	6/05	Phase Two Begins, (NOVA and Richmond in Ph One)
6	3/25	Directs hospitals to stop elective surgeries	14	7/01	Phase Three Begins for entire Virginia
7	3/30	Issues statewide stay-at-home order until June 10	15	8/03	Additional Restrictions on the Eastern Region
8	5/09	Phase One will begin no sooner than Friday, 05/15			

# Volume Trends

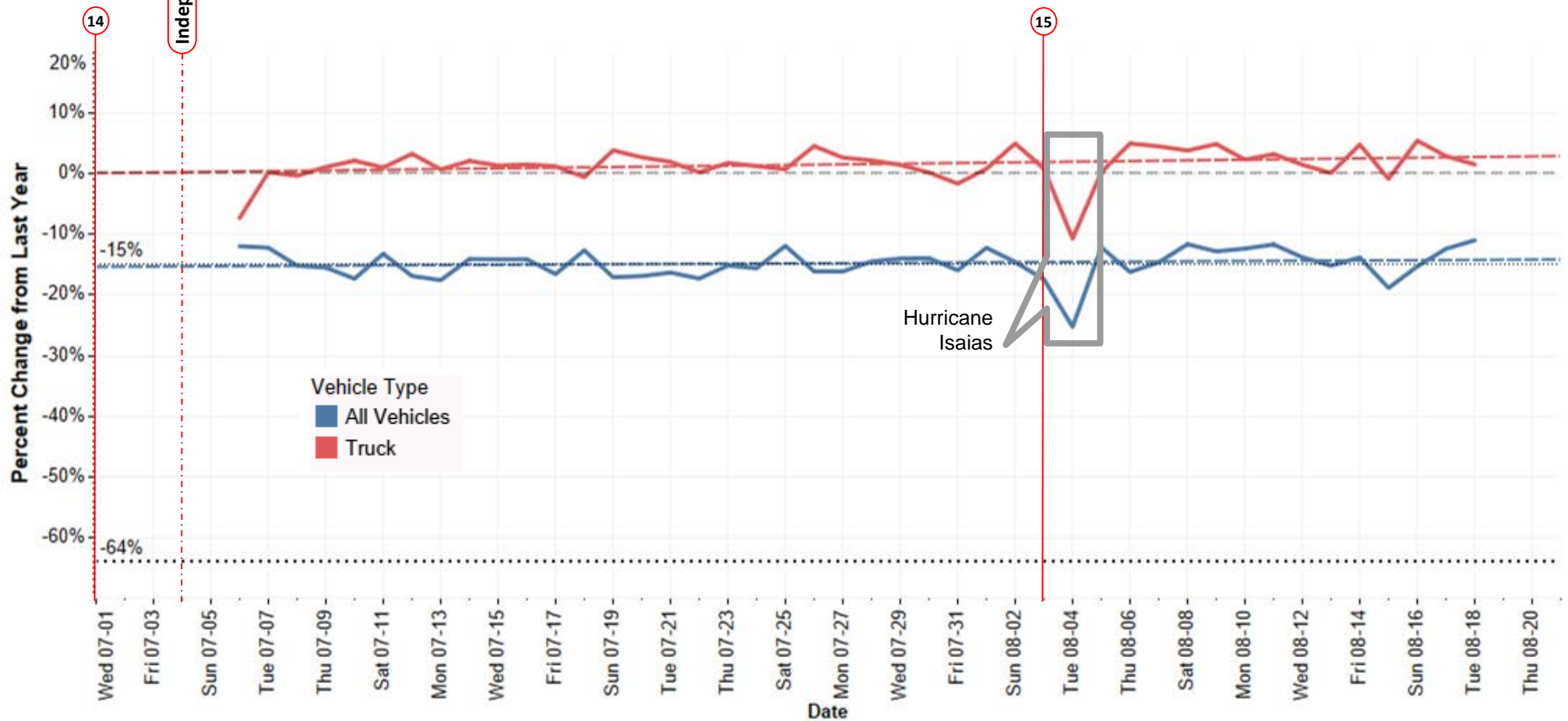
## STATEWIDE DAILY VOLUME CHANGE



#	Date	Governor Action
14	7/01	Phase Three Begins for entire Virginia
15	8/03	Additional Restrictions on the Eastern Region

# Volume Trends

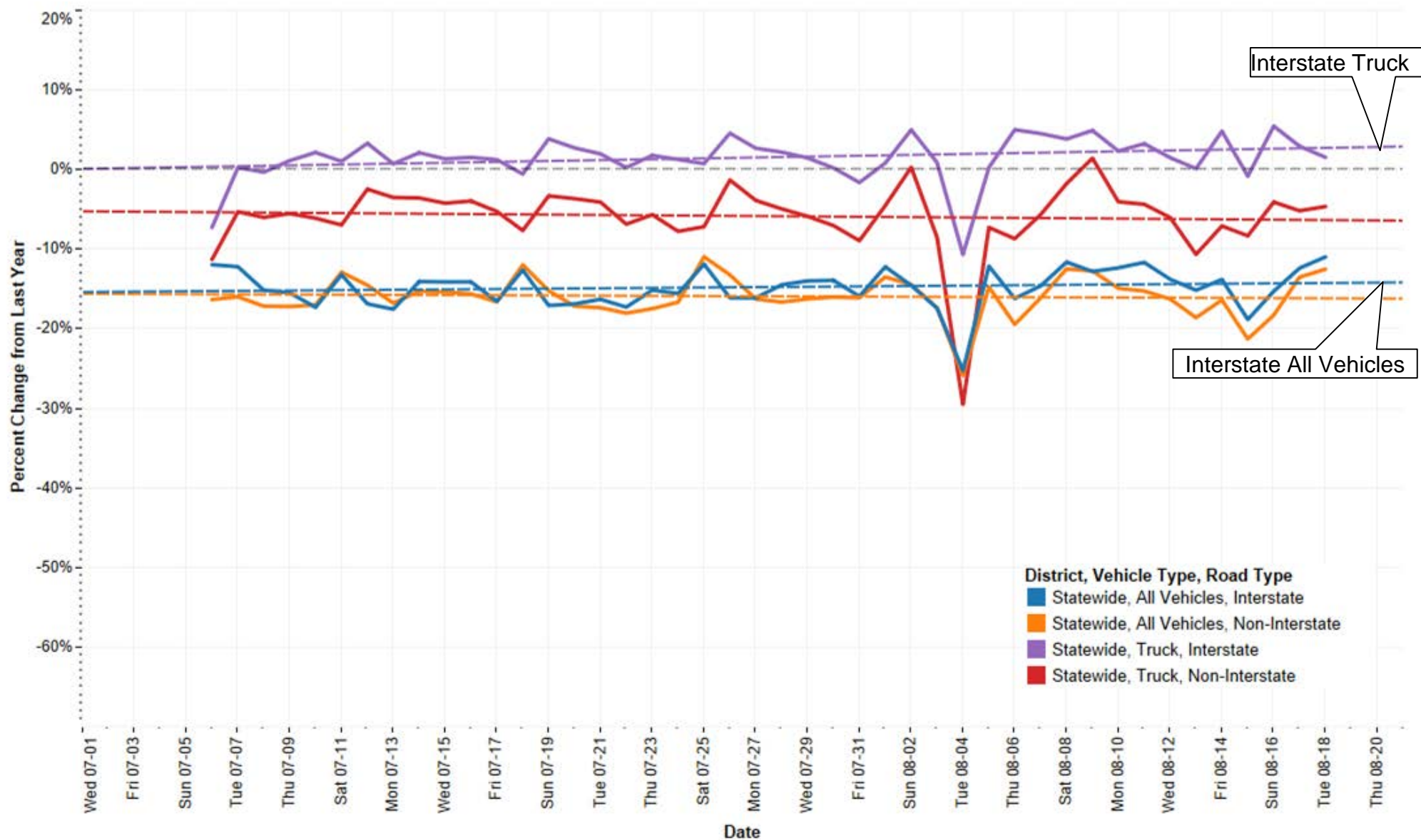
## STATEWIDE DAILY VOLUME CHANGE



#	Date	Governor Action
14	7/01	Phase Three Begins for entire Virginia
15	8/03	Additional Restrictions on the Eastern Region

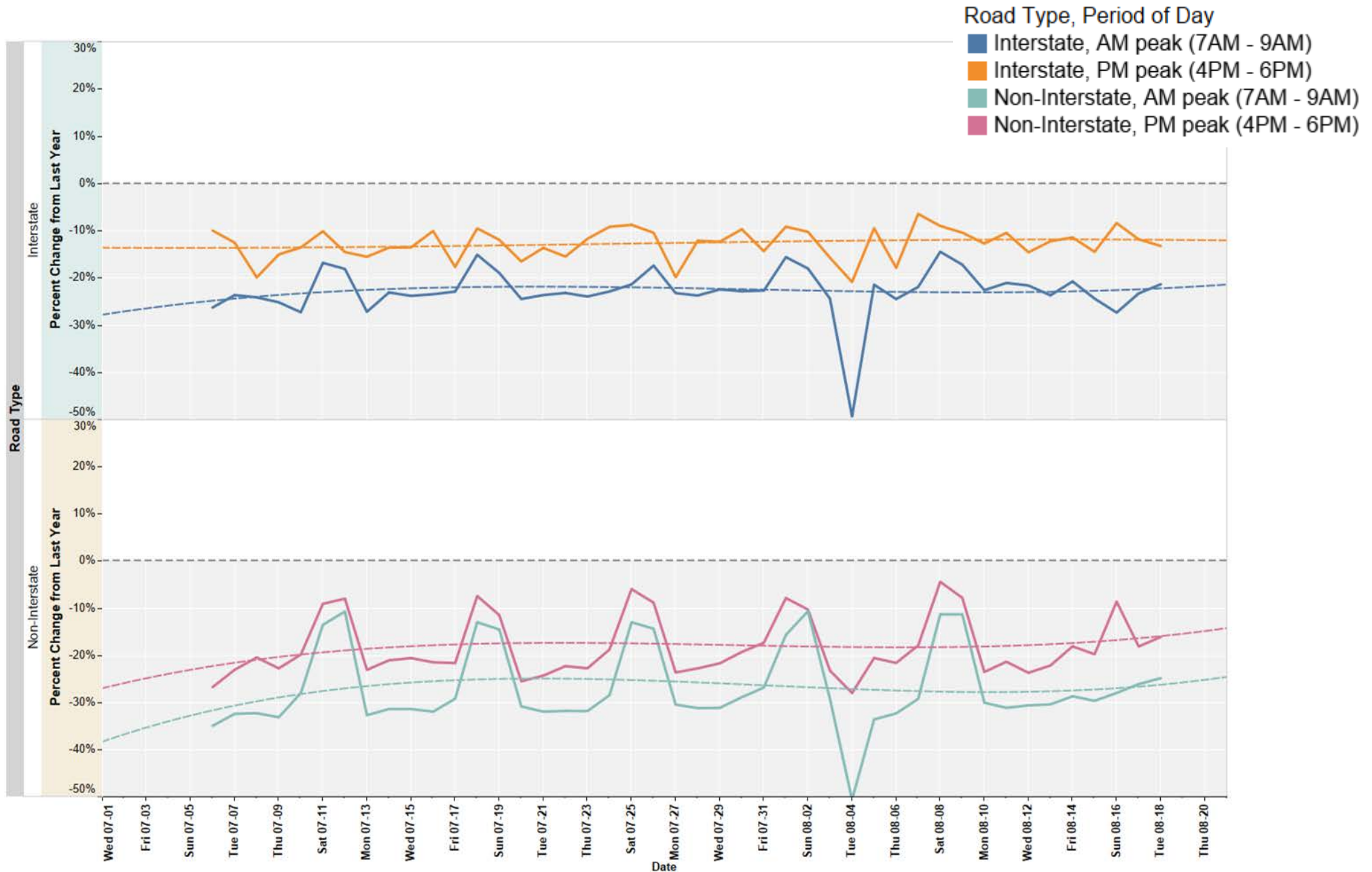
# Volume Trends

## All Vehicles and Truck Daily Volume Change Statewide



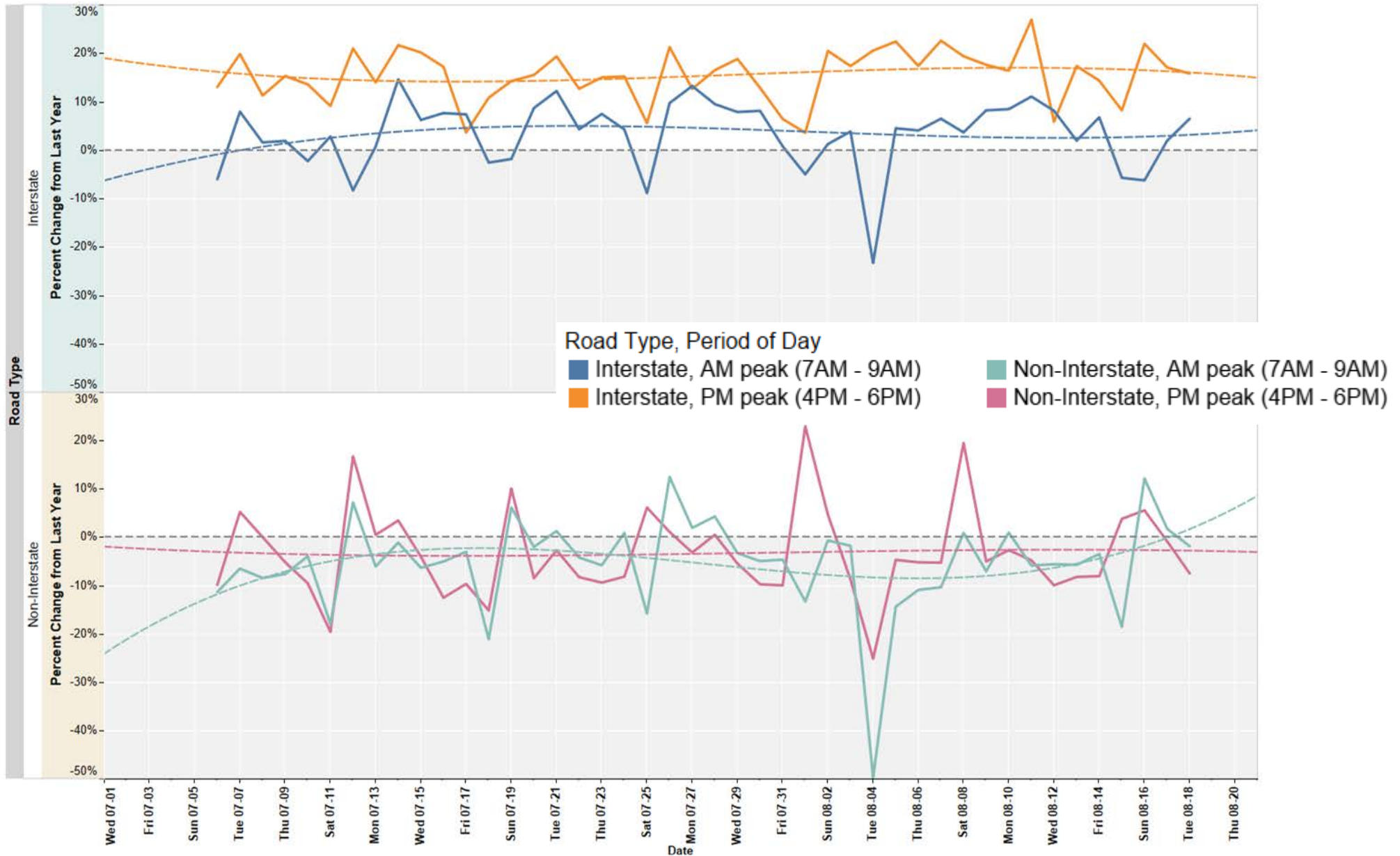
# Volume Trends

## Statewide HOURLY Volume Change for All Vehicles



# Volume Trends

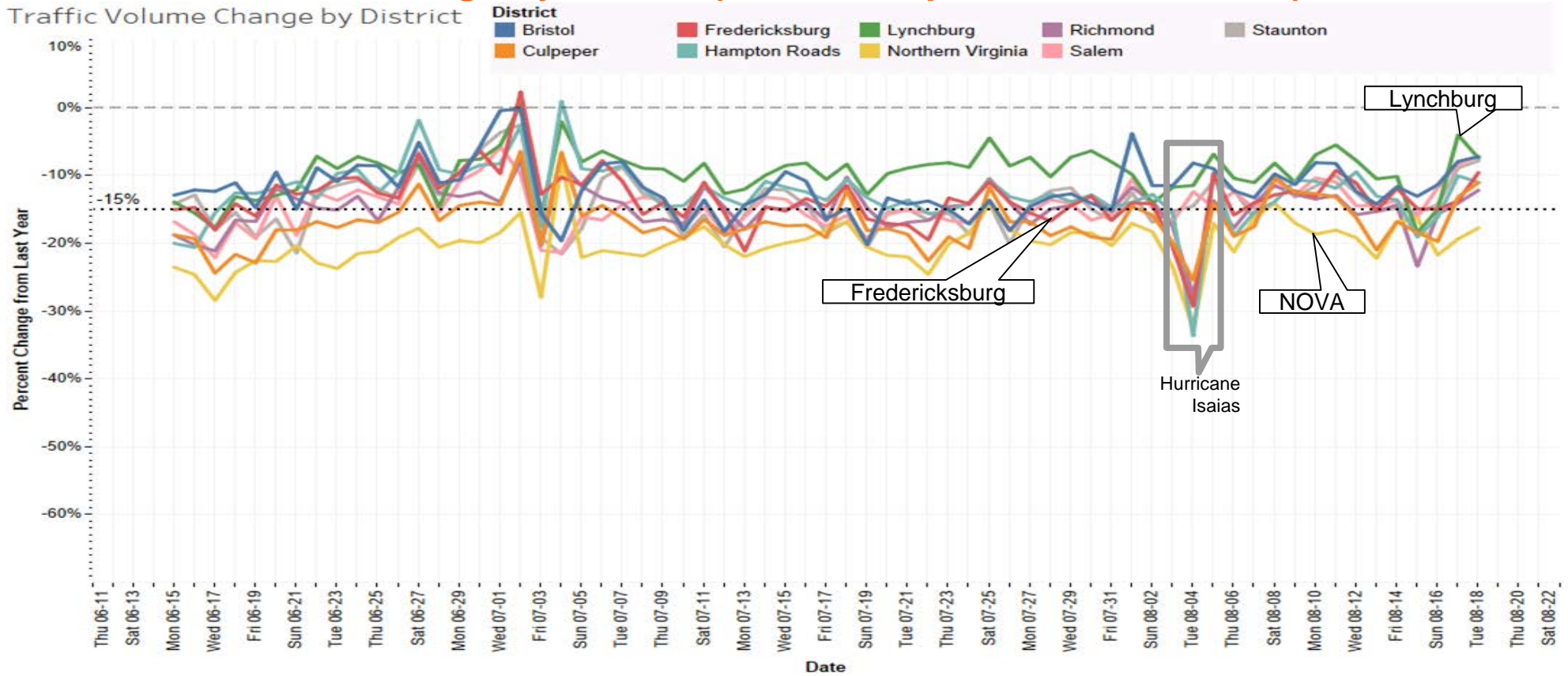
## Statewide HOURLY Volume Change for Trucks





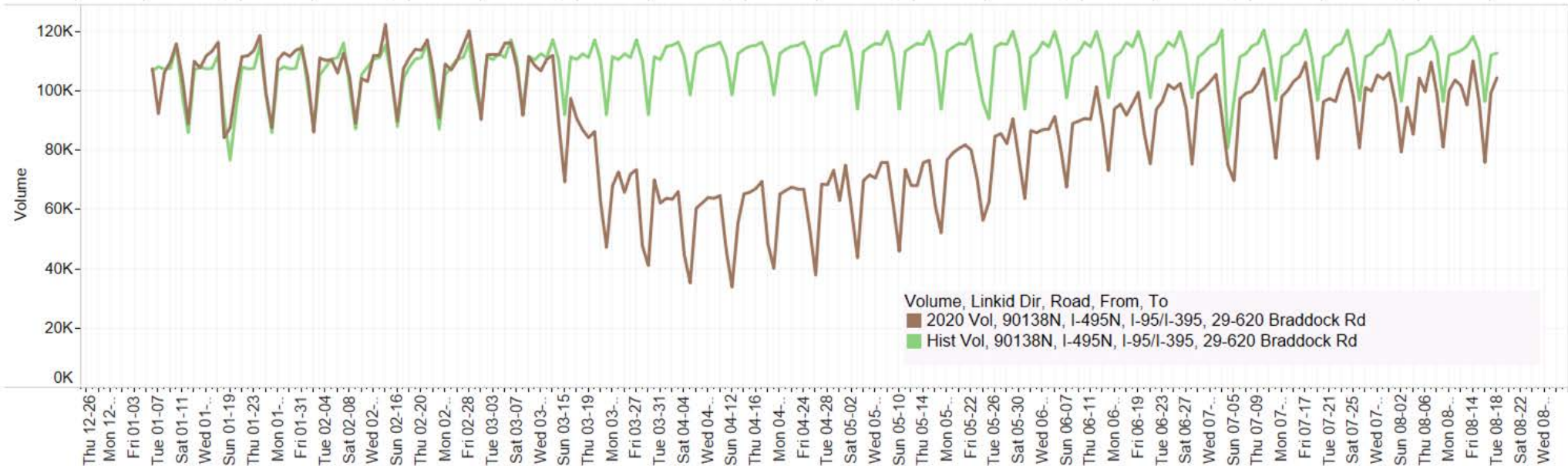
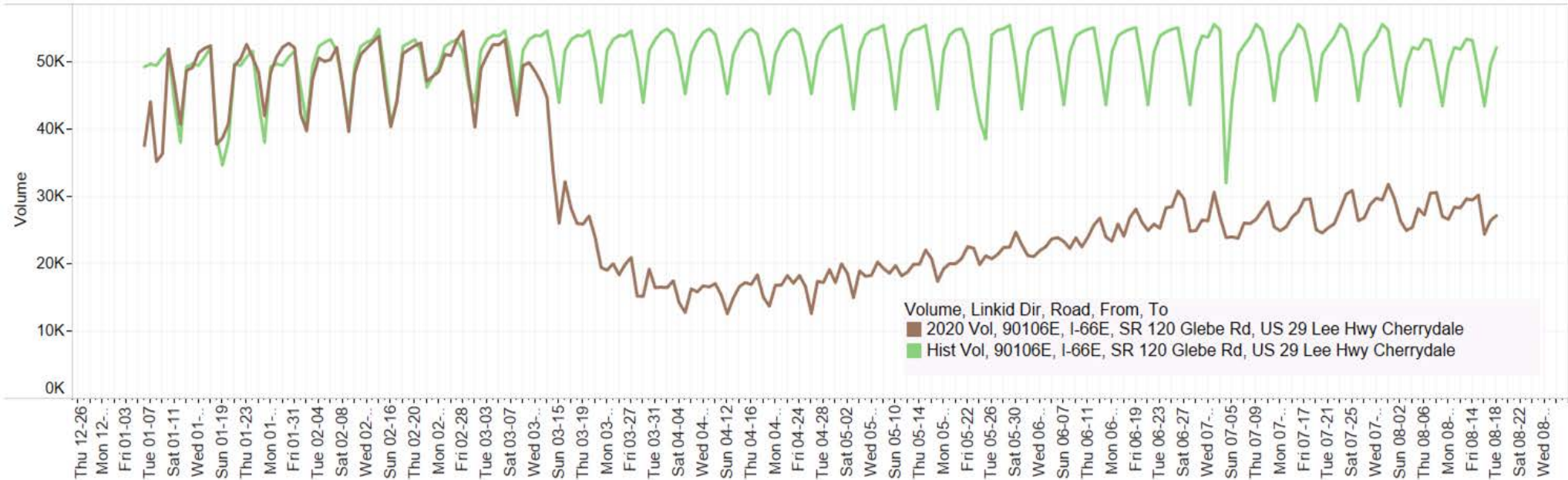
# Volume Trends

## All Vehicles Volume Change By District (Interstates plus Non-Interstates)



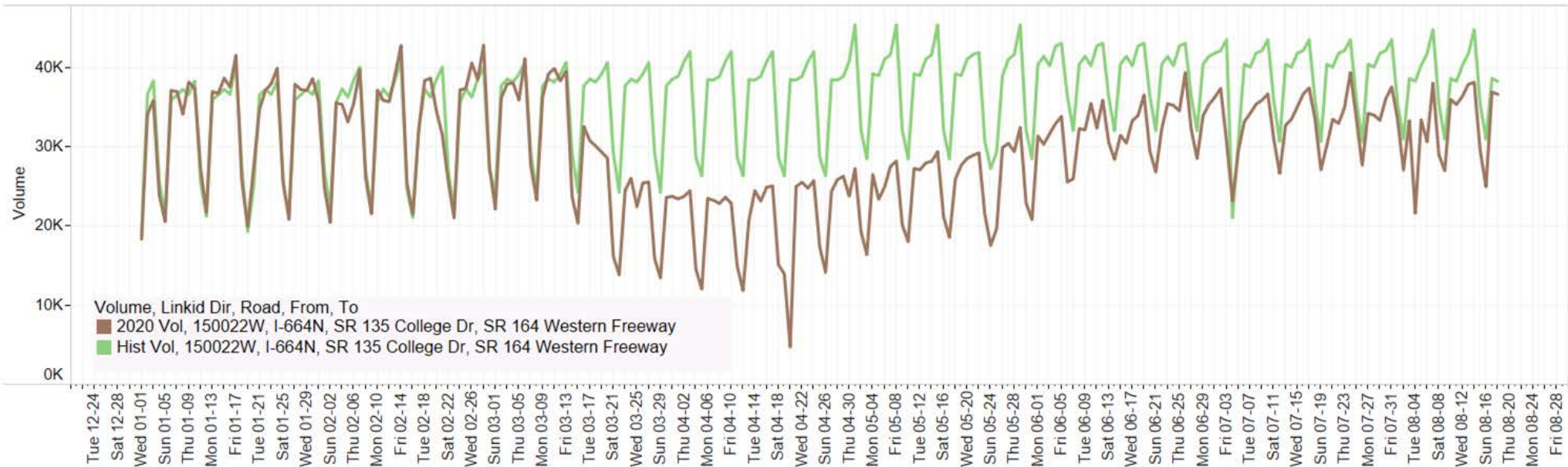
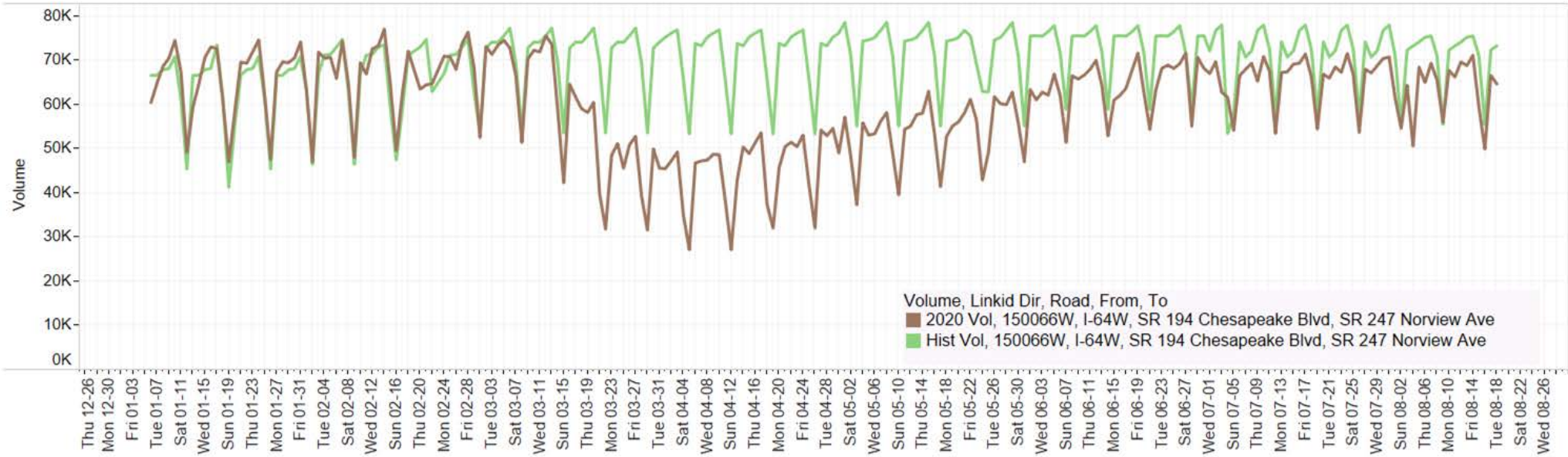
# Volume Trends

## All Vehicles Daily Volume in Northern Virginia



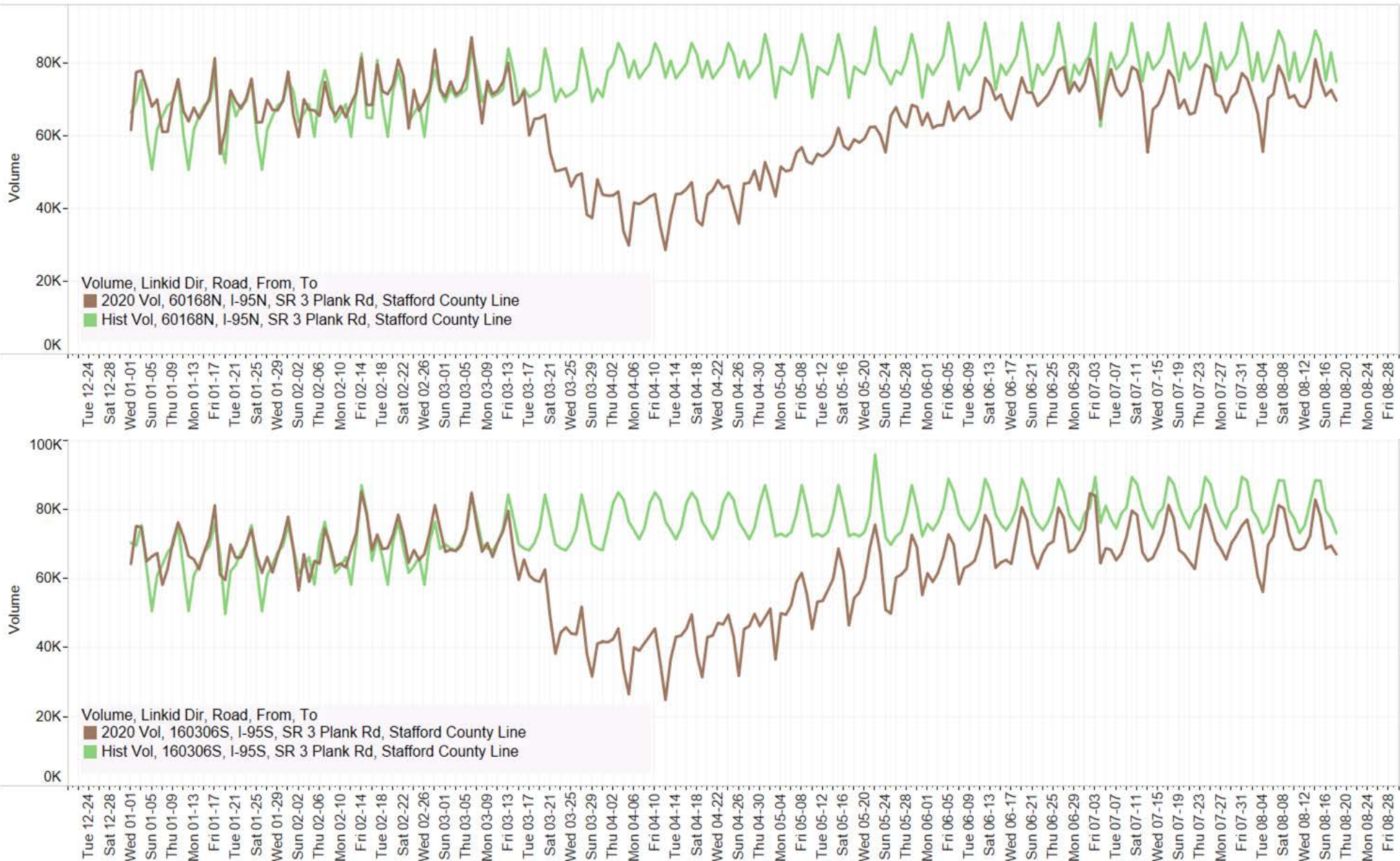
# Volume Trends

## All Vehicles Daily Volume in Hampton Roads



# Volume Trends

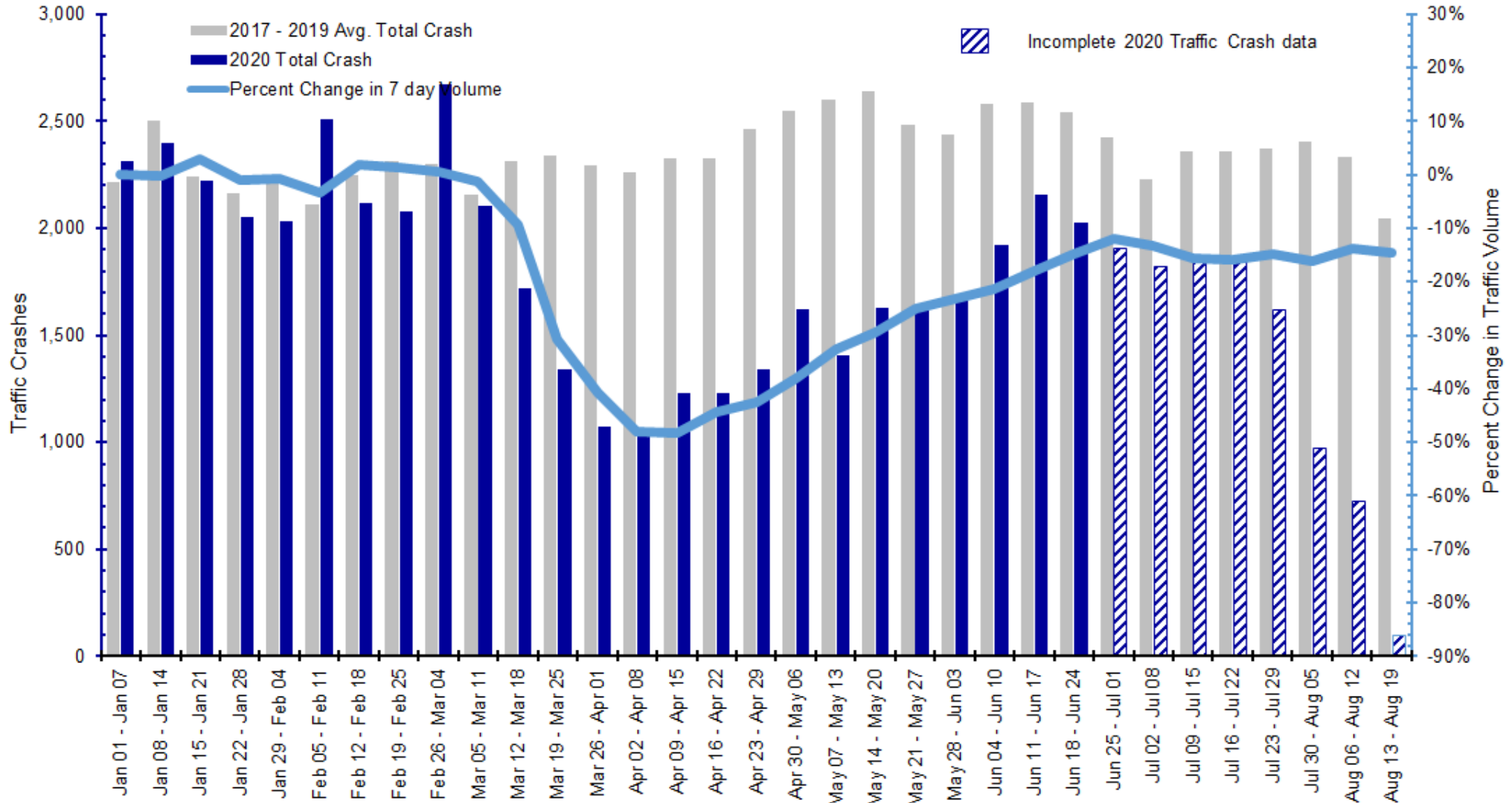
## All Vehicles Daily Volume in Fredericksburg



# Weekly Traffic Crash

## Statewide All Systems

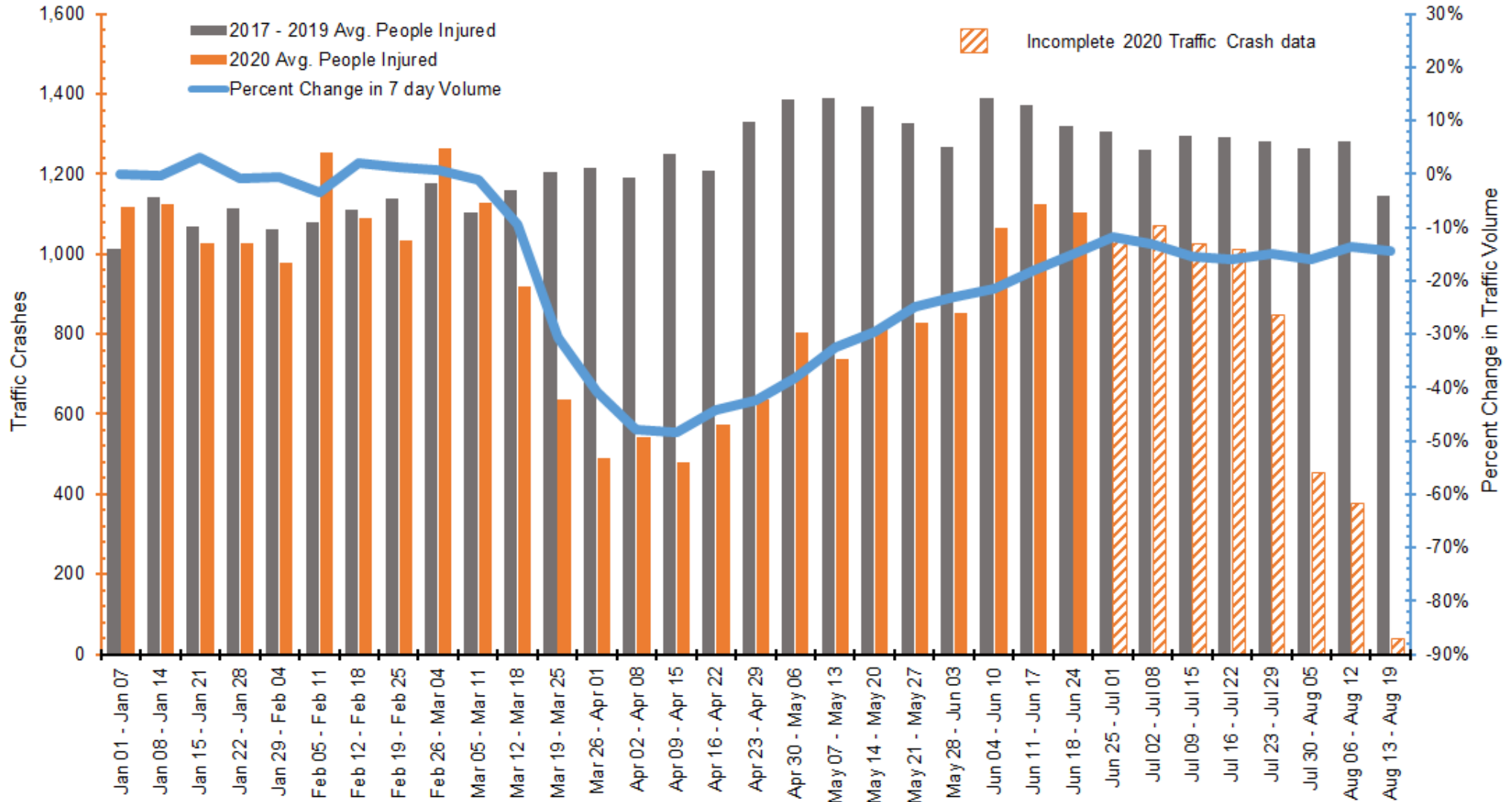
Weekly Total Crashes - from January 1 to August 18



# Weekly Traffic Crash

## Statewide All Systems

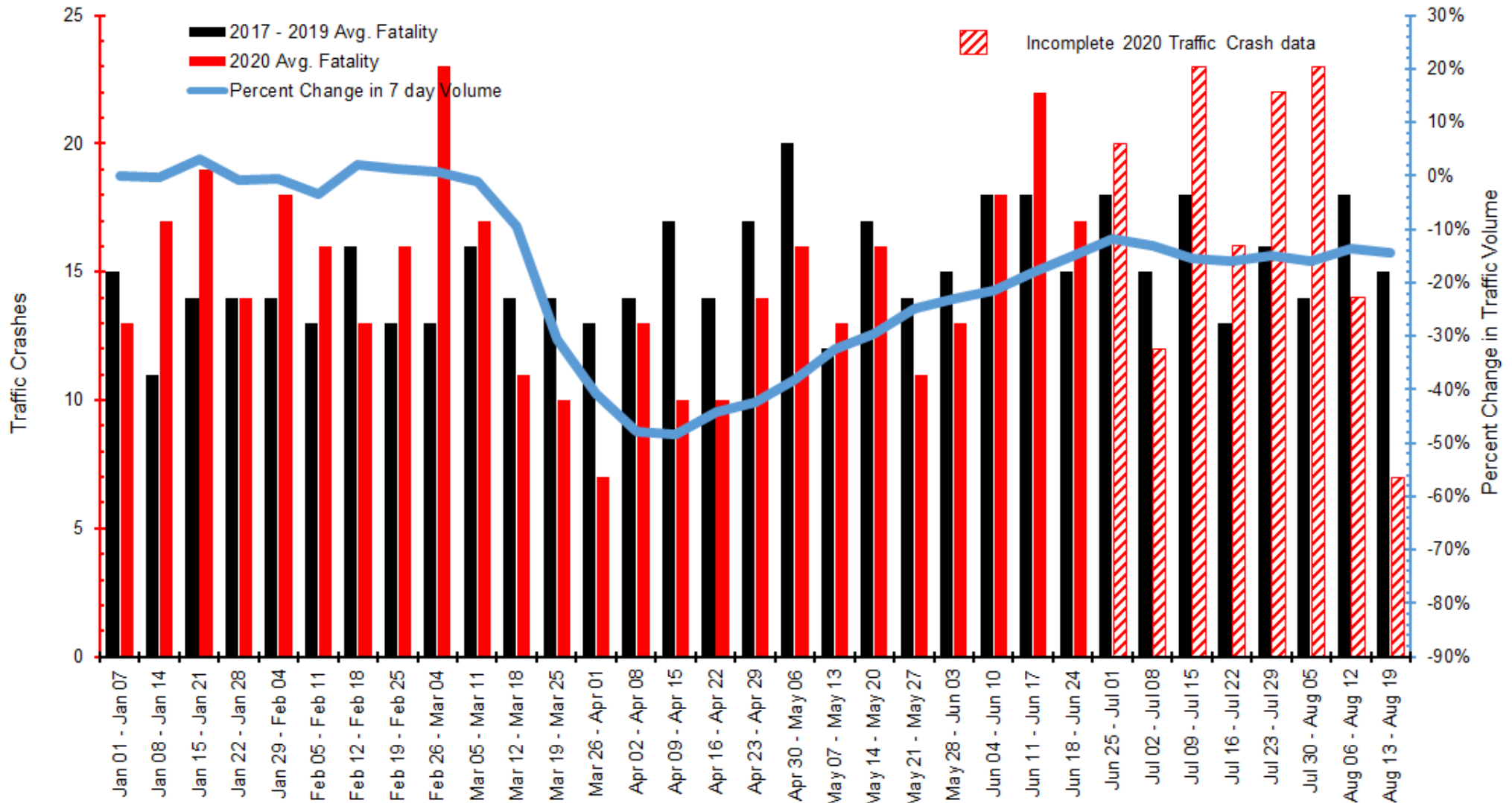
Weekly Injury Crashes - from January 1 to August 18



# Weekly Traffic Crash

## Statewide All Systems

Weekly **Fatal** Crashes - from January 1 to August 18



# Questions