

COVID-19 Traffic Trend Update for CTB

Volume, Speed and Crashes

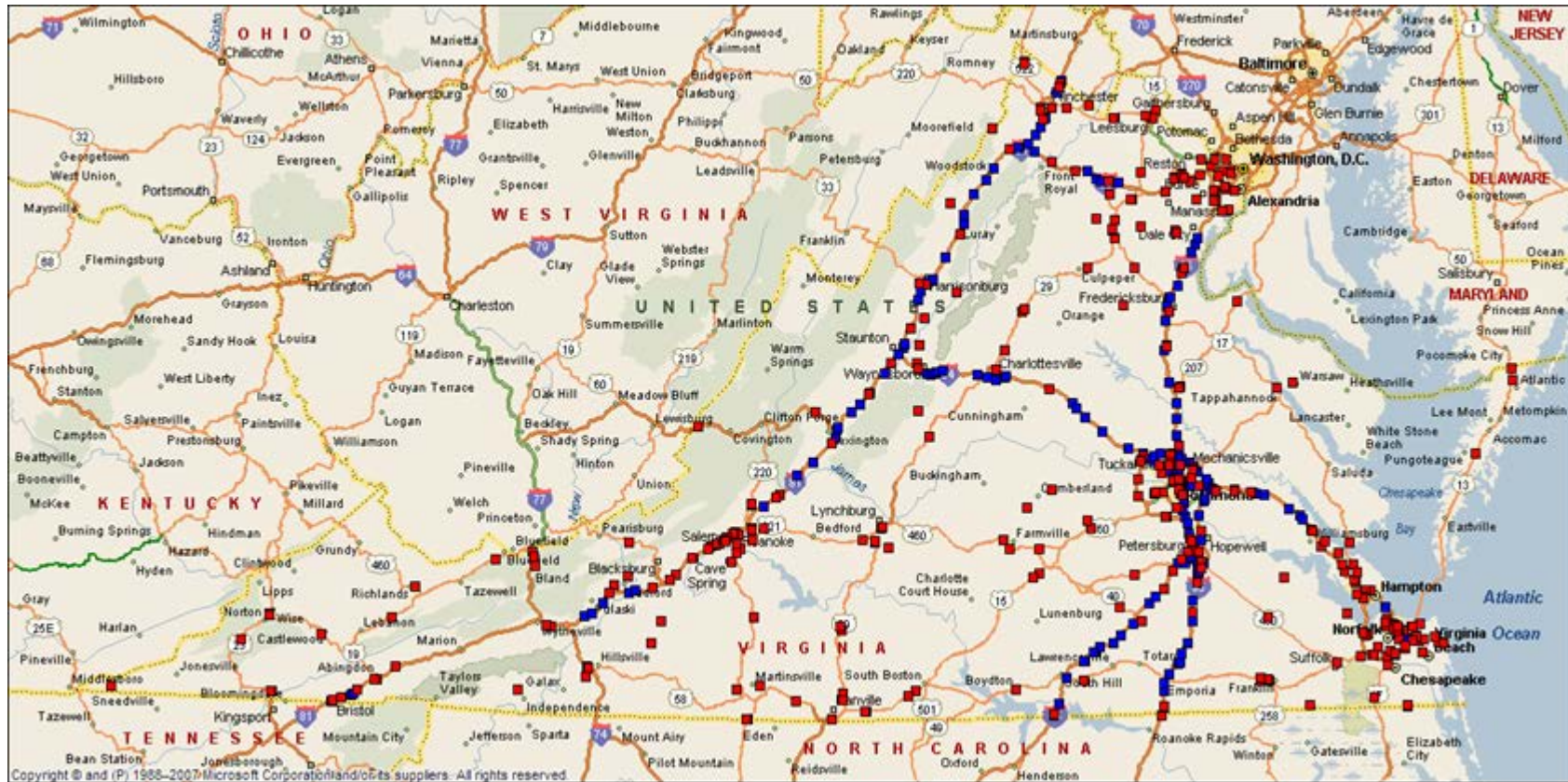
Mena Lockwood, P.E.

VDOT Traffic Engineering Division

01/19/21

Volume Source

VDOT Traffic Monitoring System (TMS)

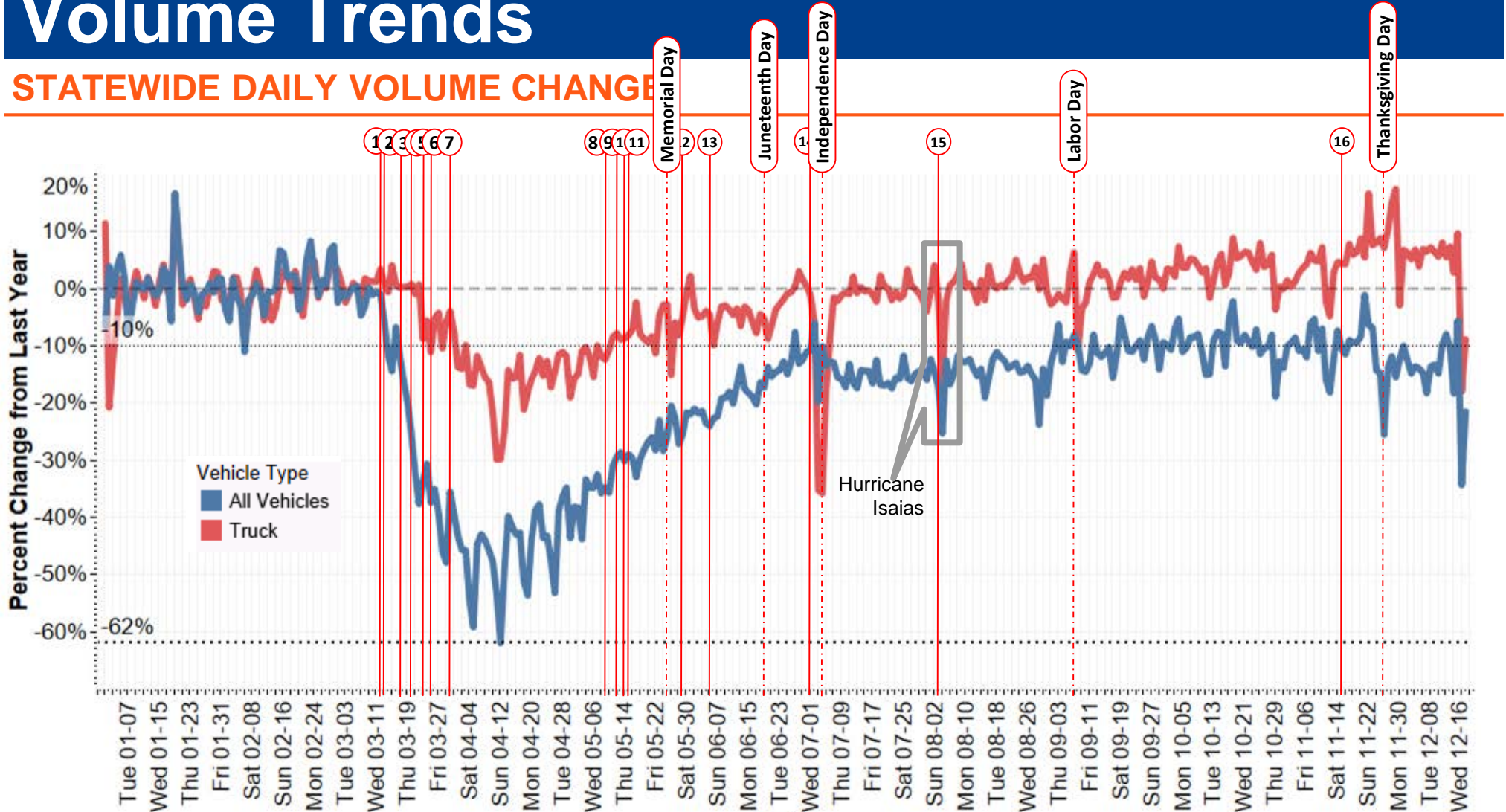


512 Continuous Count Stations

- 306 Road Sensors (CCS)
- 206 Non-Intrusive (Radar) Sensors (NCCS)

Volume Trends

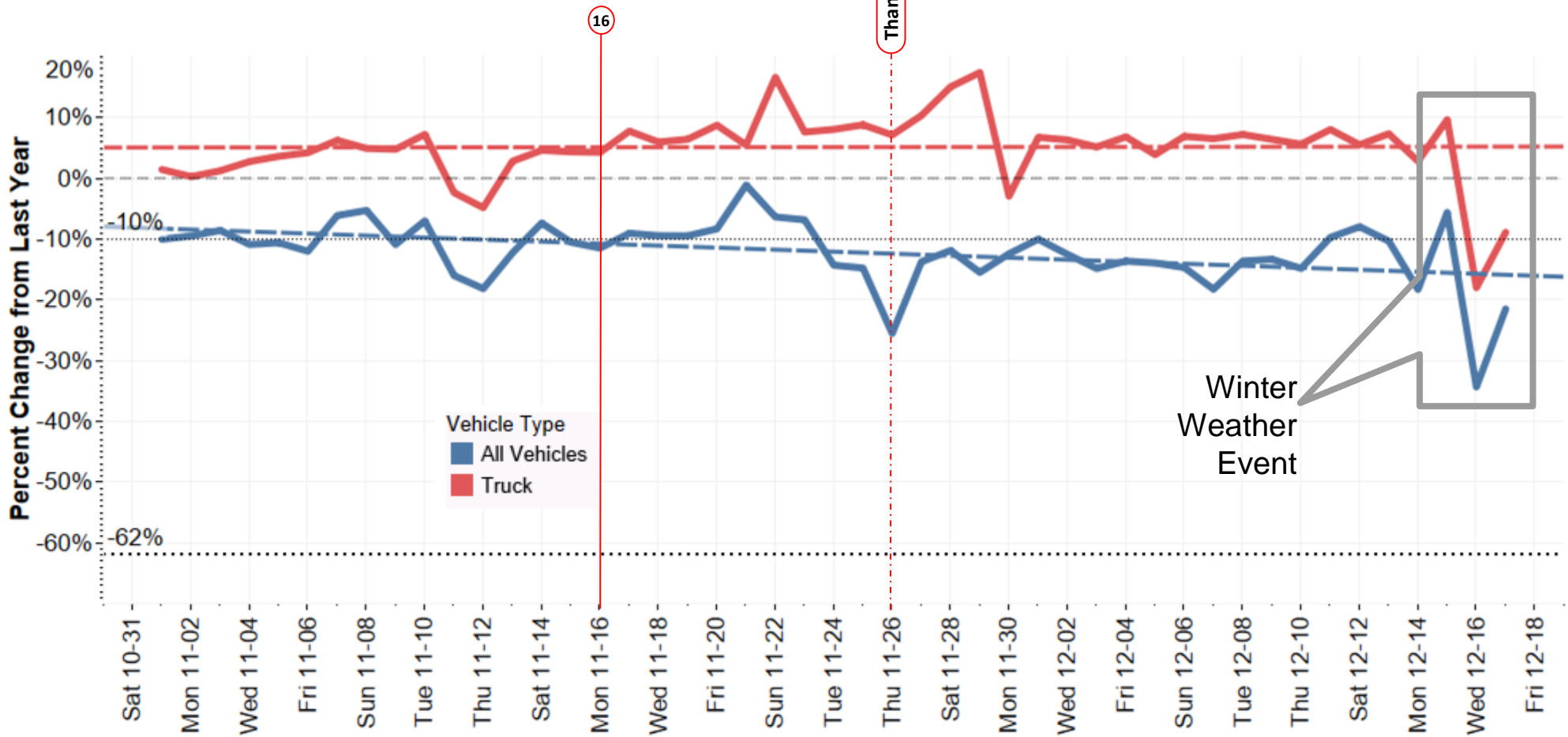
STATEWIDE DAILY VOLUME CHANGE



#	Date	Governor Action	#	Date	Governor Action
1	3/12	Declares state of emergency	9	5/12	Delays Phase 1 for Northern Virginia Localities till 05/28
2	3/13	Closes schools for two weeks, beginning 3/16	10	5/14	Delays Phase 1 for Accomack County and the City of Richmond till 05/28
3	3/17	Advises to avoid non-essential gatherings of more than 10	11	5/15	Phase One Begins (NOVA, Richmond and Accomack in Ph Zero)
4	3/20	State agencies begin process of implementing telework where possible/applicable	12	5/29	Phase One Begins for NOVA, Richmond and Accomack (rest in ph two)
5	3/23	Close - Schools for rest of school yr, Non-essential business, Restaurants; No gathering more than 10	13	6/05	Phase Two Begins, (NOVA and Richmond in Ph One)
6	3/25	Directs hospitals to stop elective surgeries	14	7/01	Phase Three Begins for entire Virginia
7	3/30	Issues statewide stay-at-home order until June 10	15	8/03	Additional Restrictions on the Eastern Region
8	5/09	Phase One will begin no sooner than Friday, 05/15	16	11/15	Limit 25 individuals for in-person gatherings, expanded mask mandate, on-site alcohol curfew & increased enforcement

Volume Trends

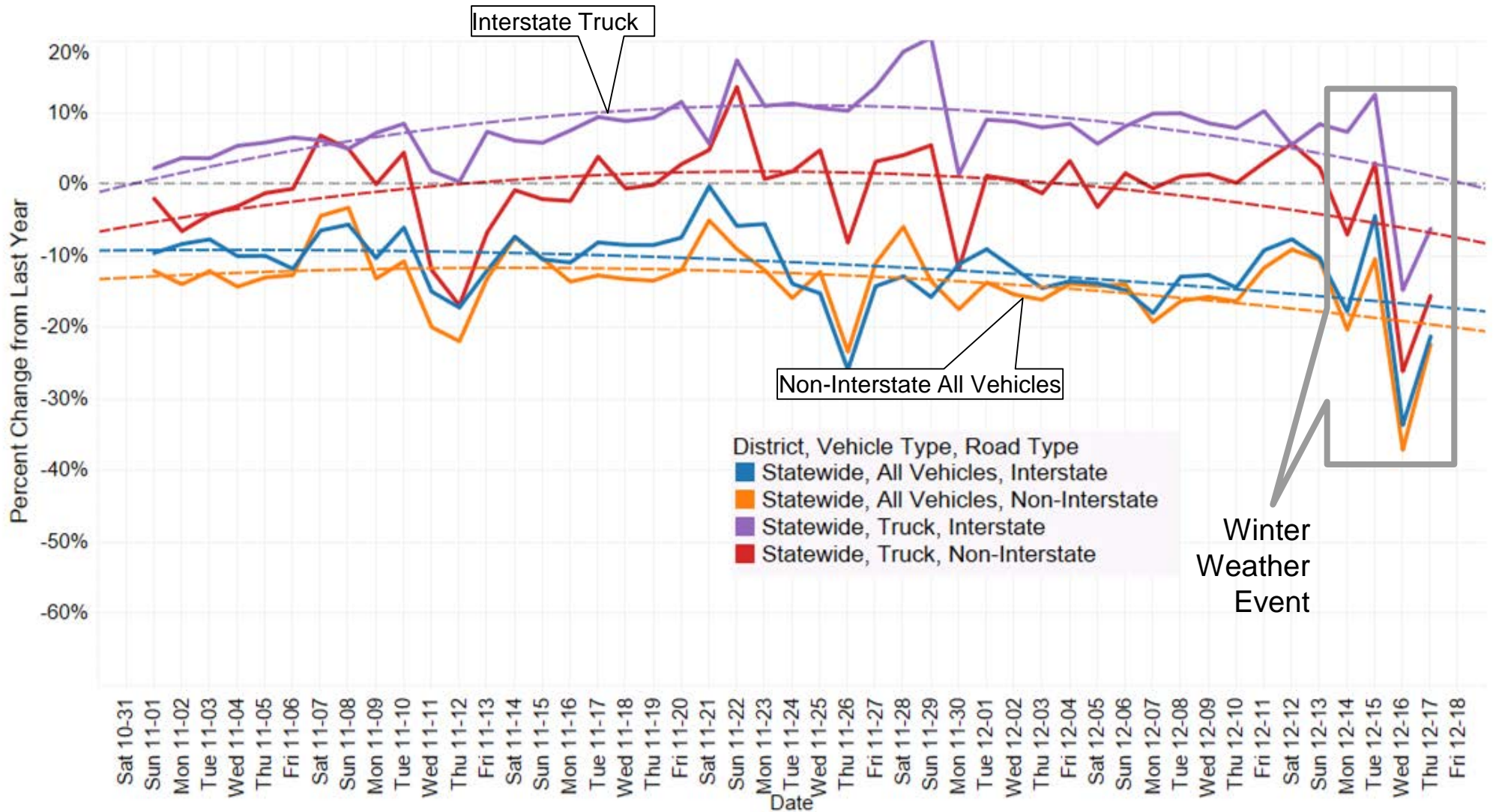
STATEWIDE DAILY VOLUME CHANGE in NOVEMBER 2020



#	Date	Governor Action
16	11/16	Limit 25 individuals for in-person gatherings, expanded mask mandate, on-site alcohol curfew & increased enforcement

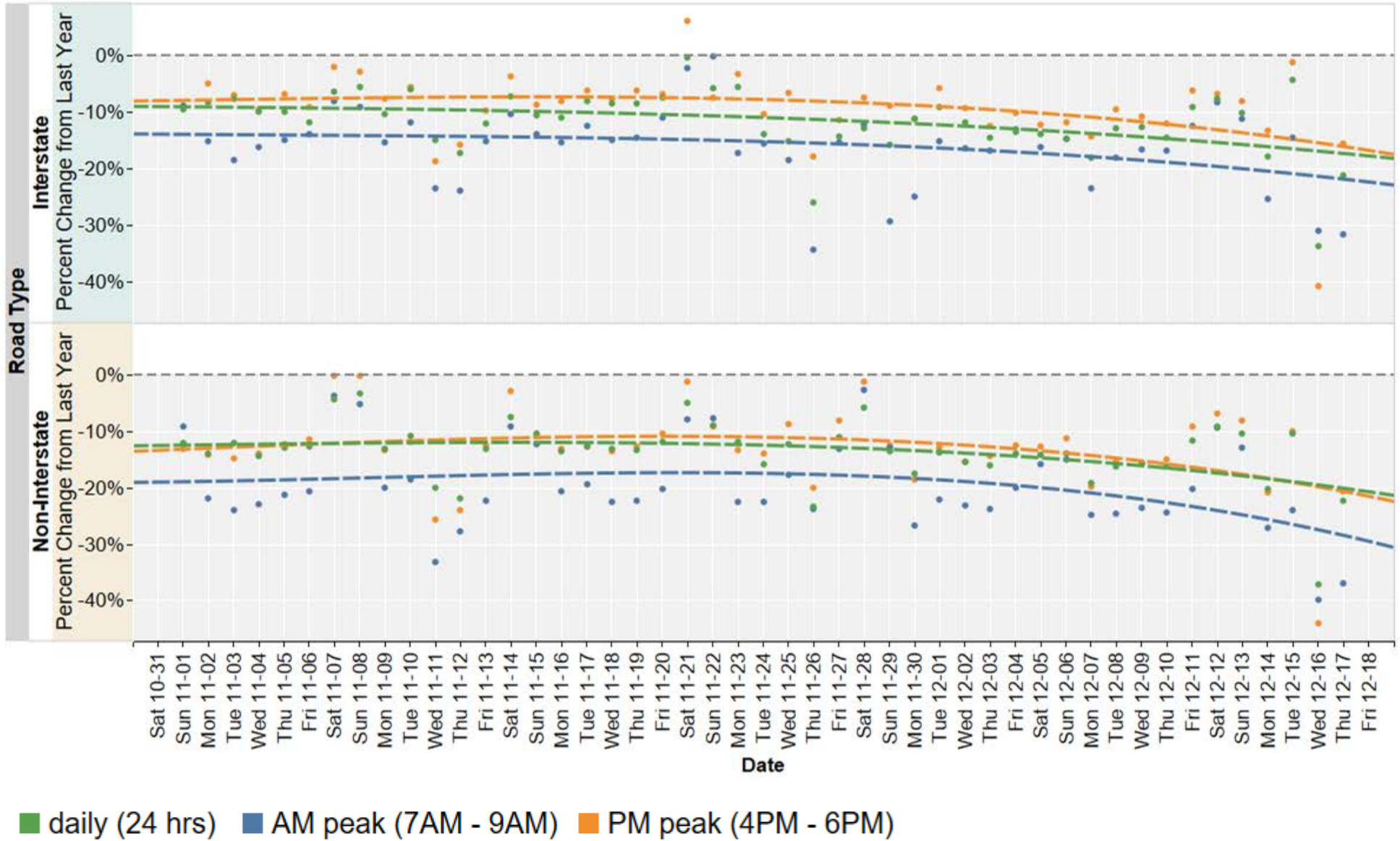
Volume Trends

All Vehicles and Truck Daily Volume Change Statewide



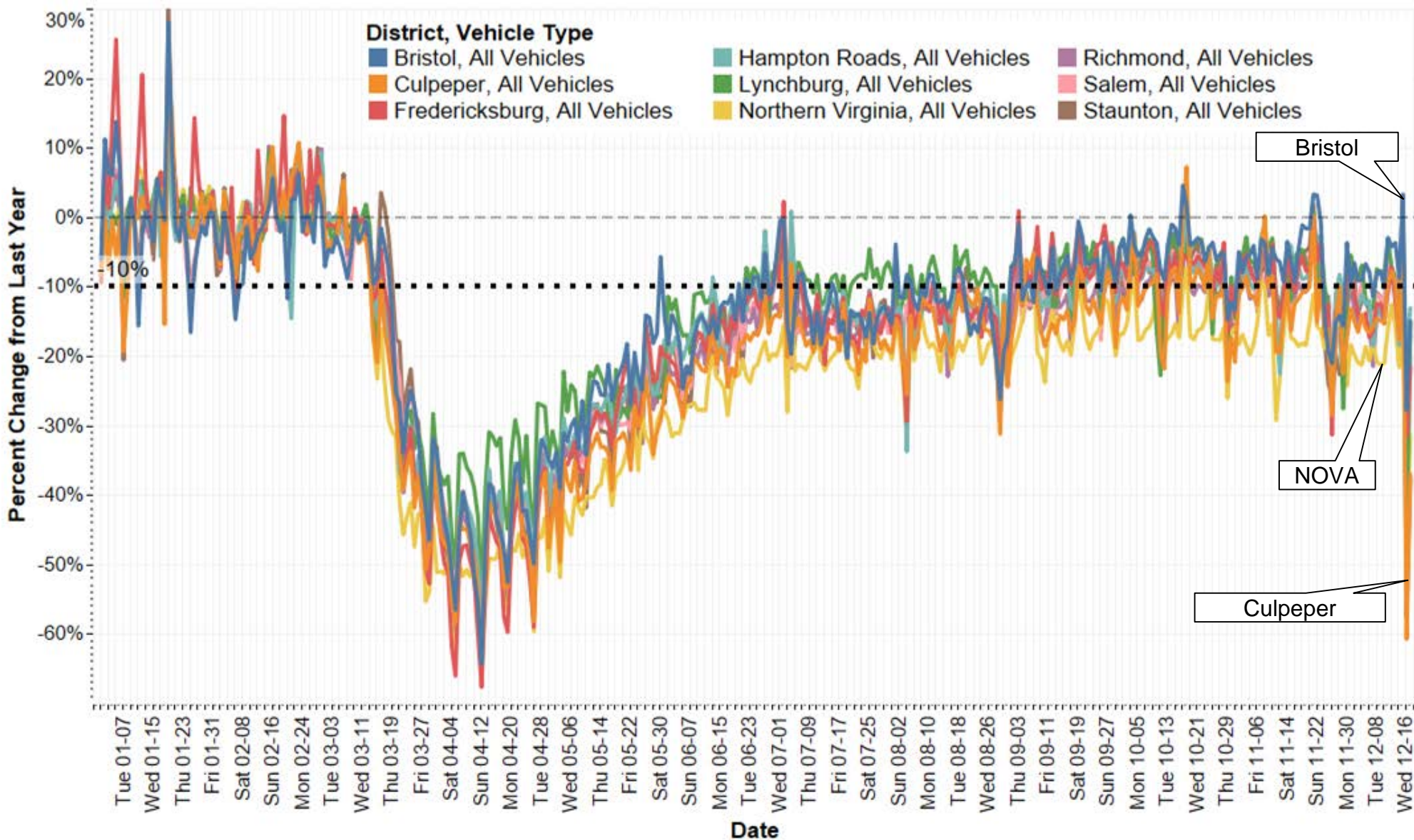
Volume Trends

Statewide PEAK PERIOD Volume Change for All Vehicles



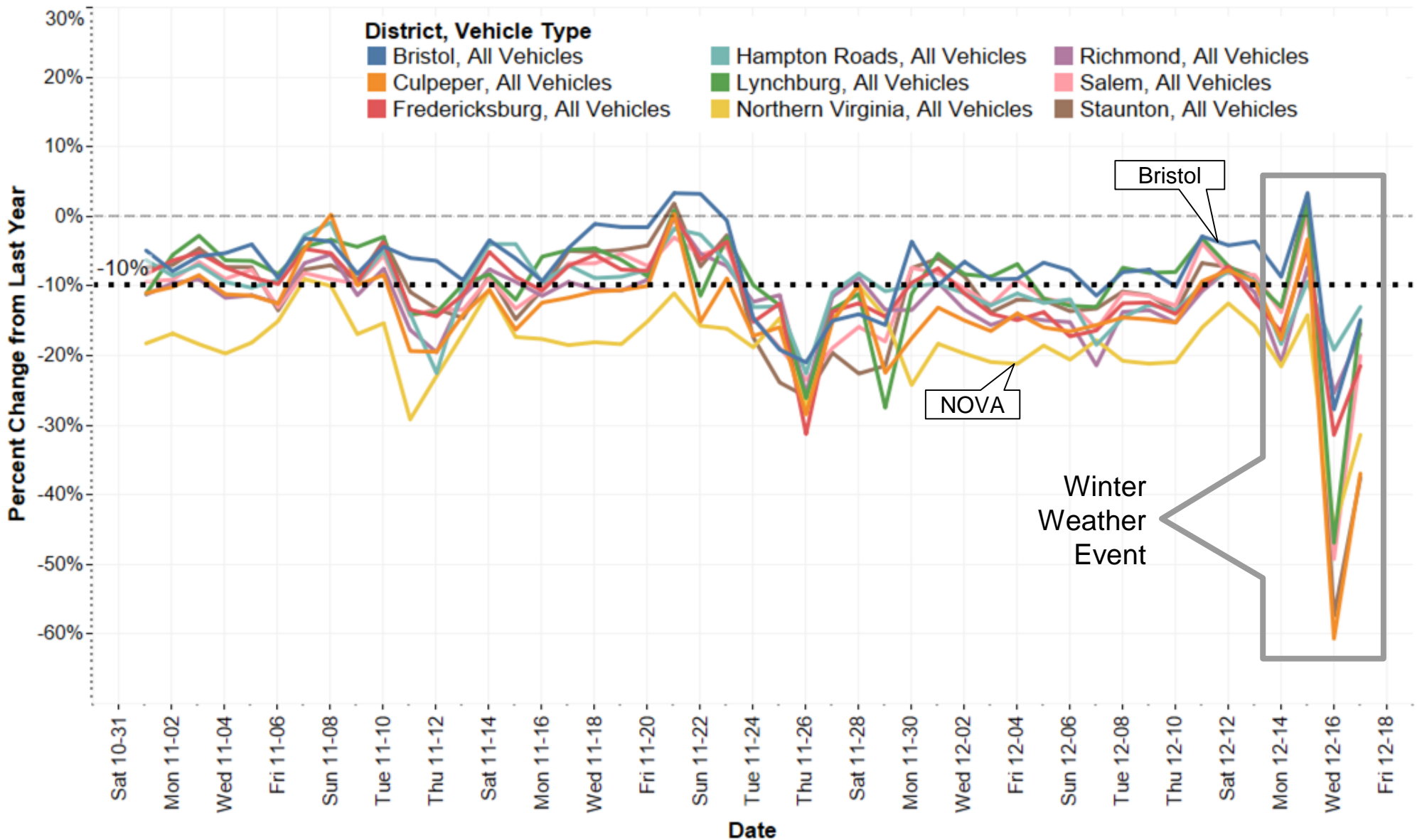
Volume Trends

All Vehicles Volume Change By District (Interstates plus Non-Interstates)



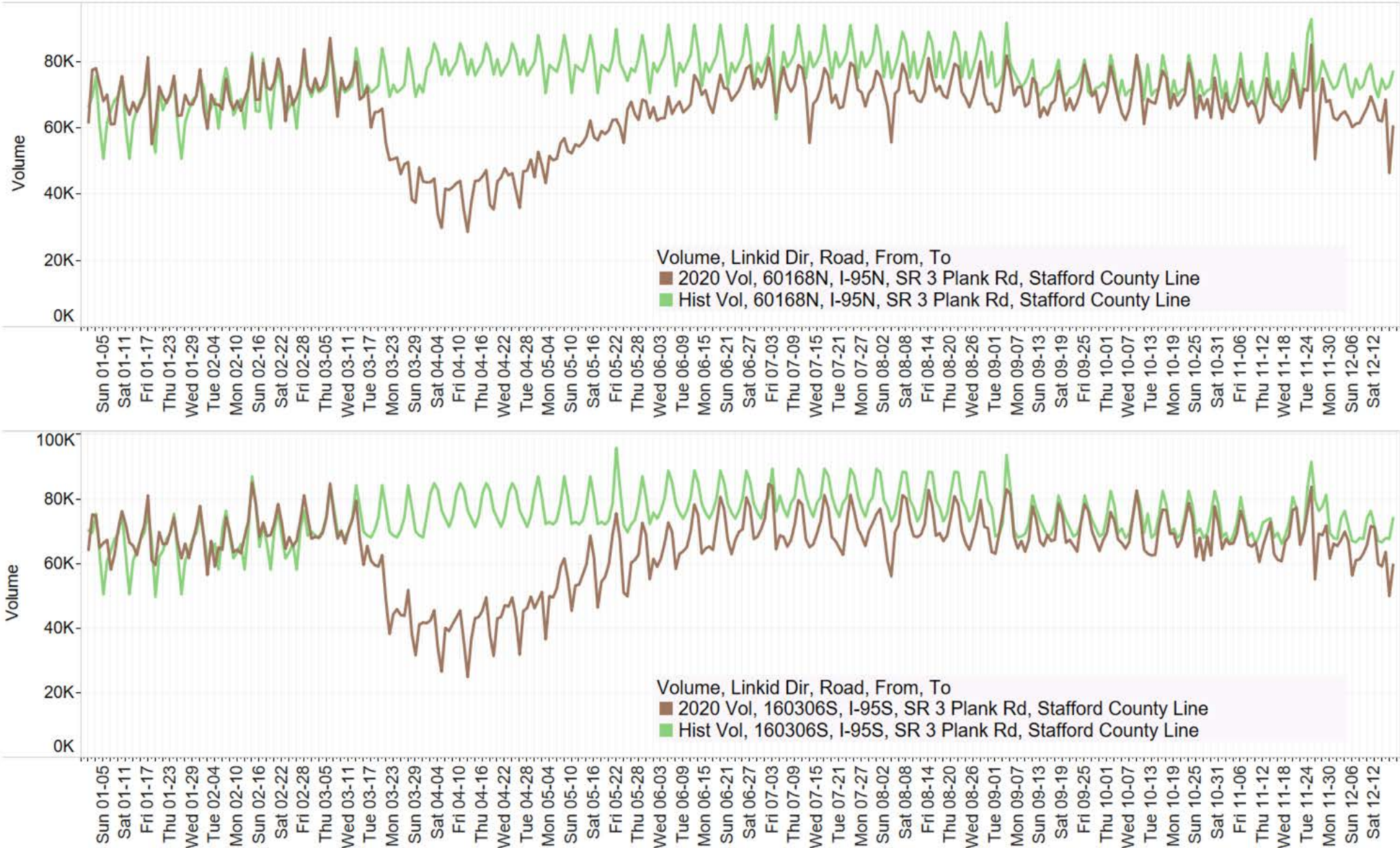
Volume Trends

All Vehicles Volume Change By District (Interstates plus Non-Interstates)



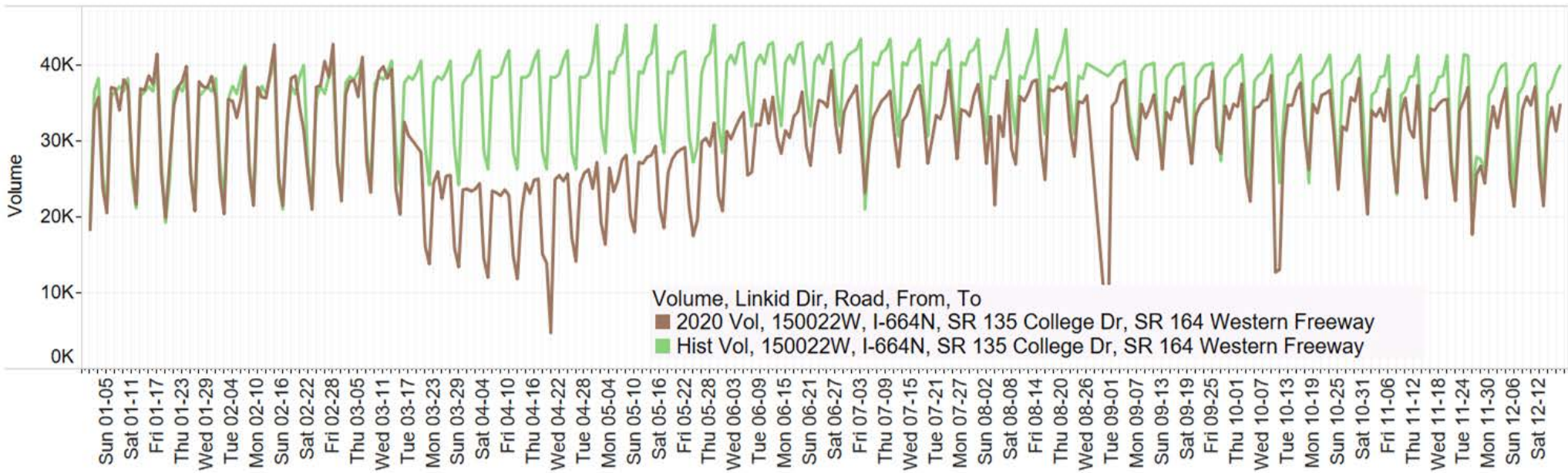
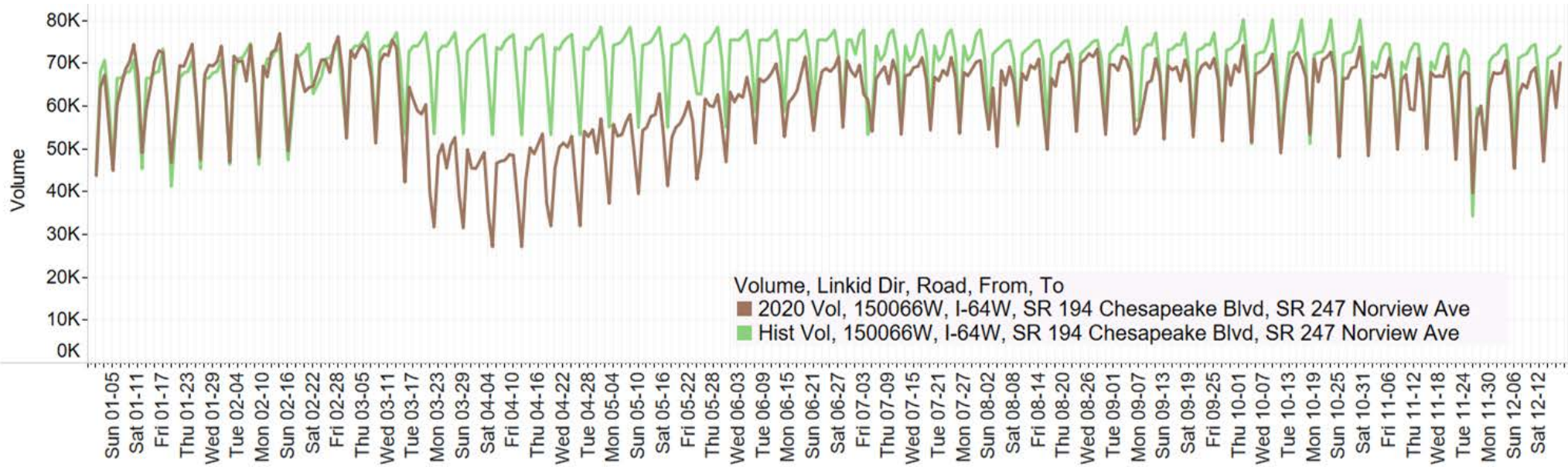
Volume Trends

All Vehicles Daily Volume in Fredericksburg



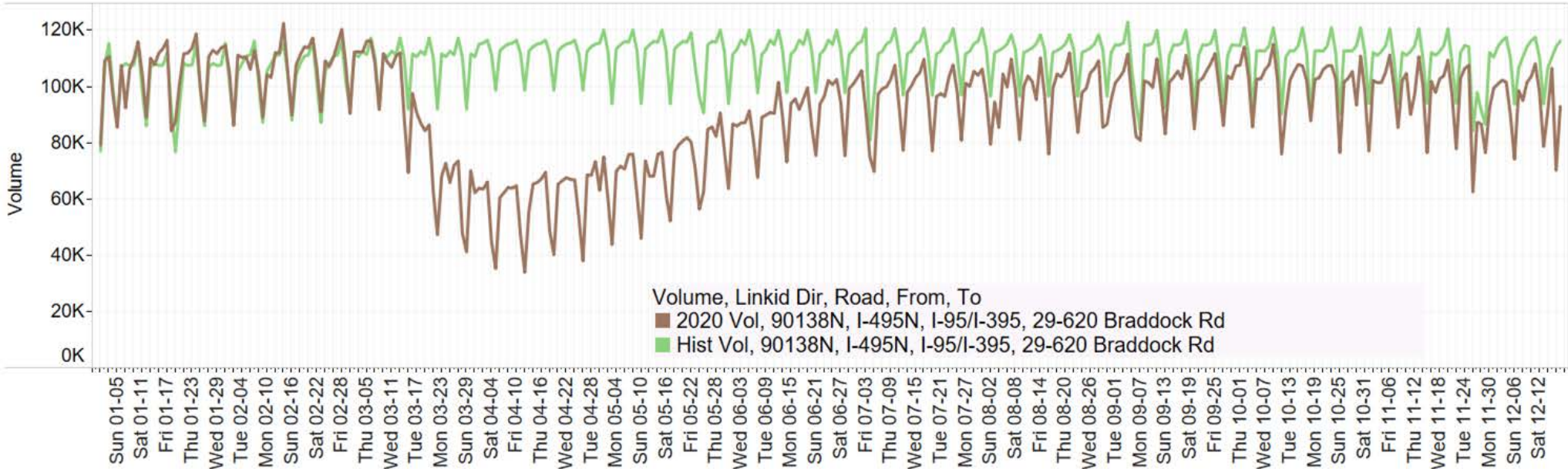
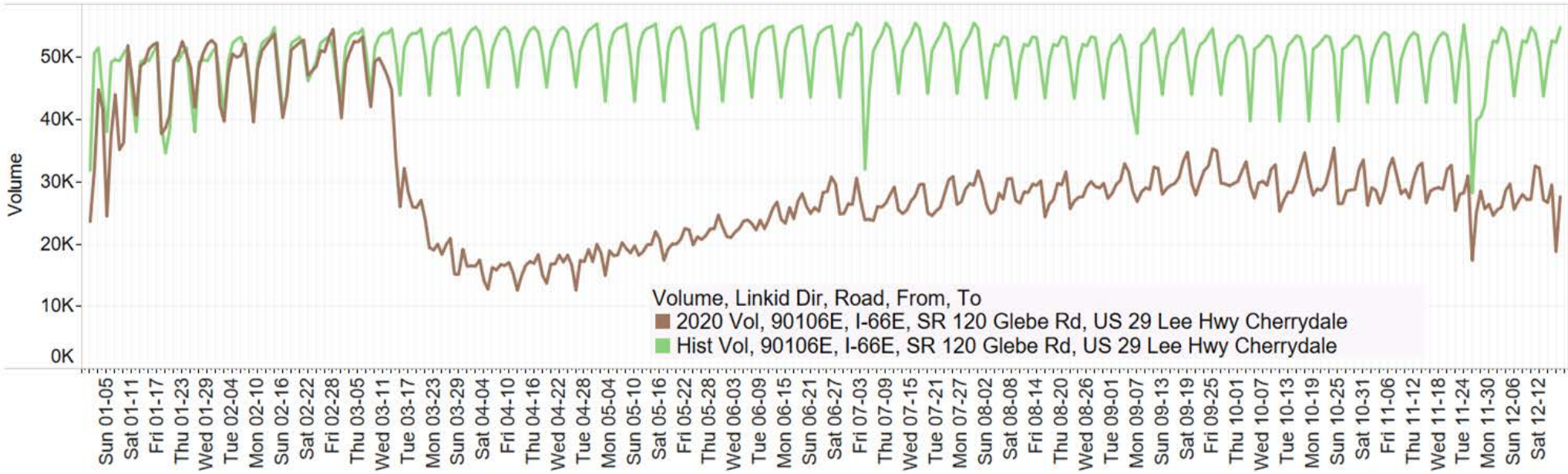
Volume Trends

All Vehicles Daily Volume in Hampton Roads



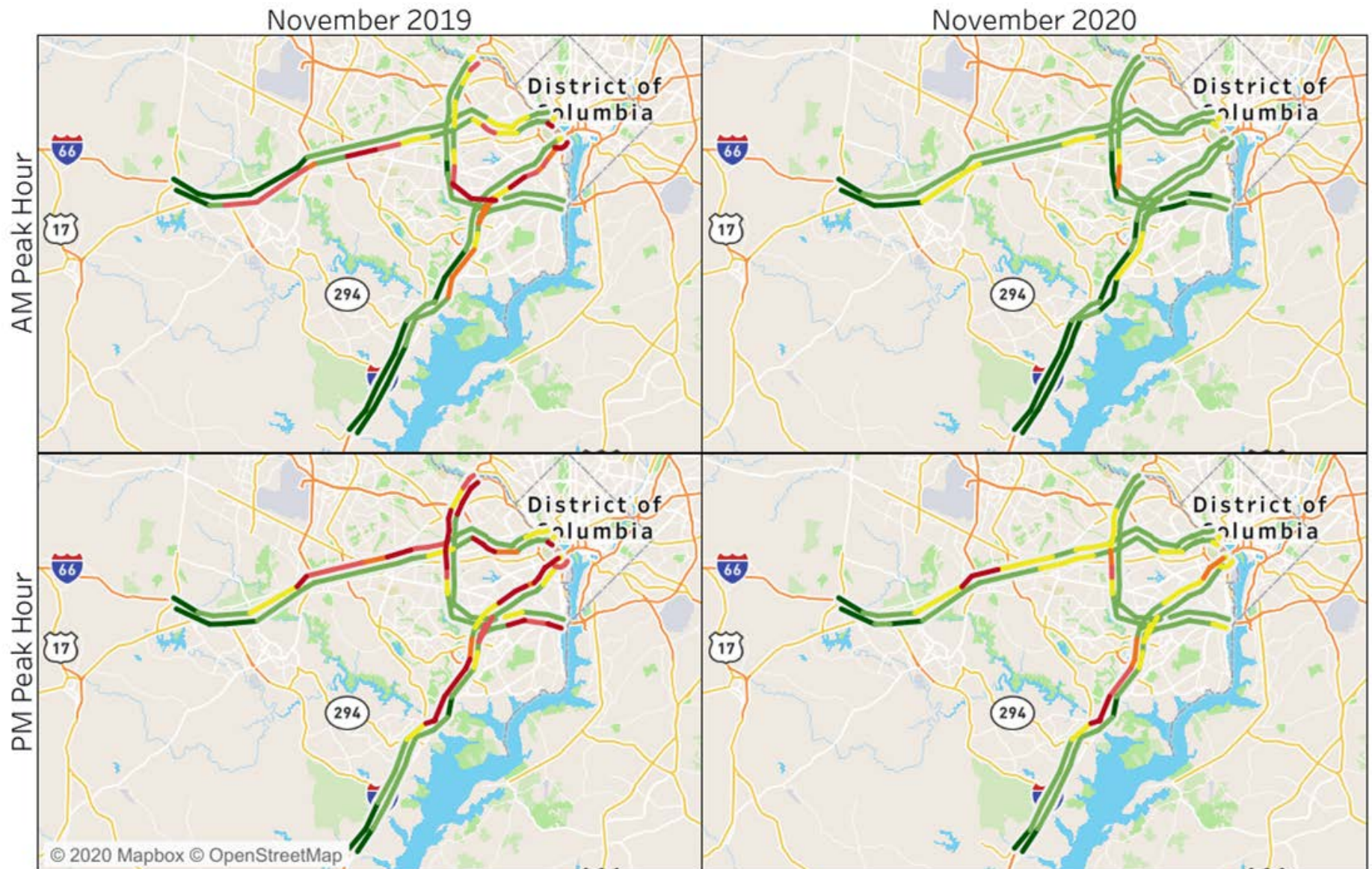
Volume Trends

All Vehicles Daily Volume in Northern Virginia



Speed Trends

Weekday Peak Hour Speeds in Northern Virginia District

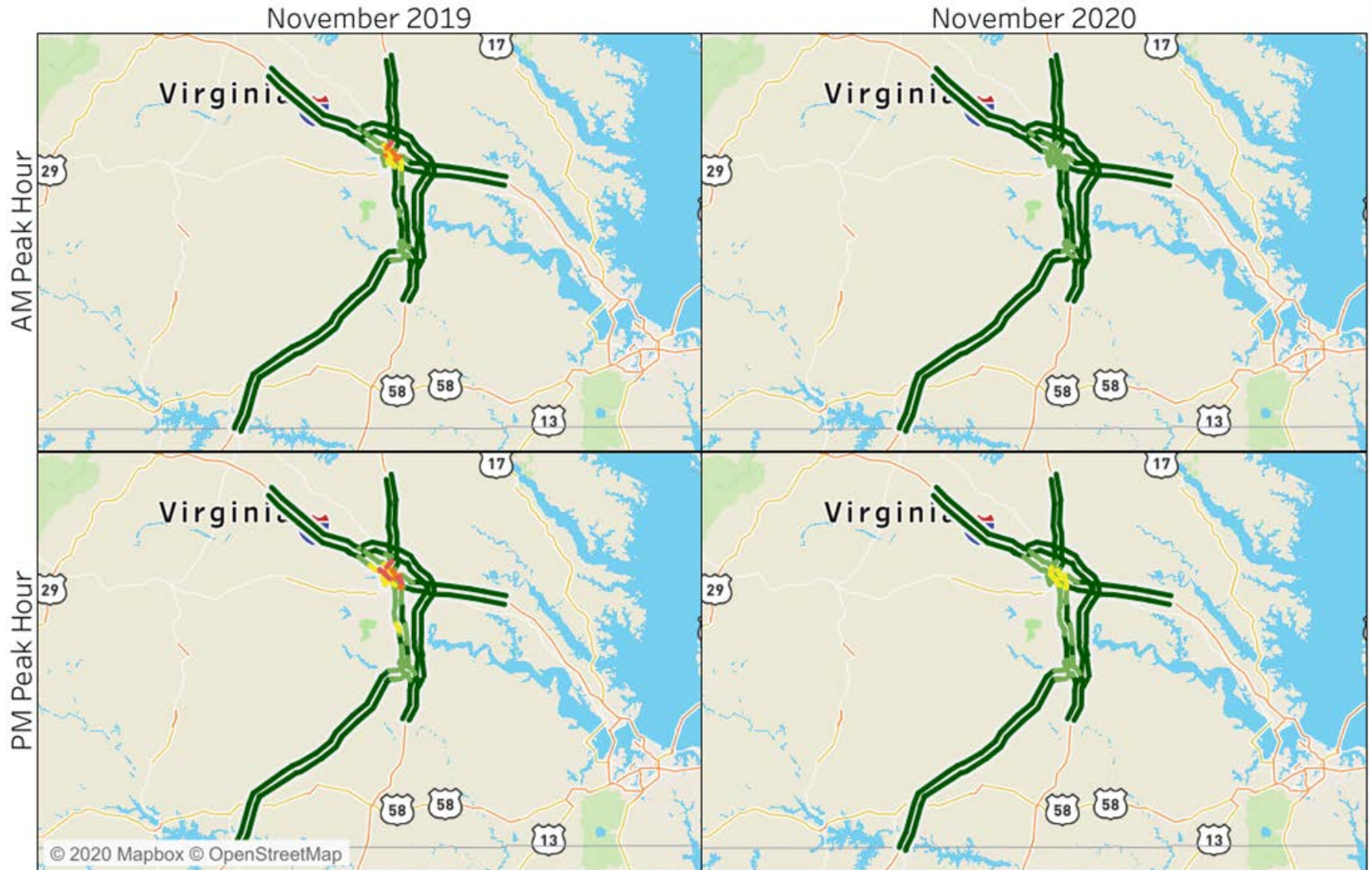


50th % Speed Maps



Speed Trends

Weekday Peak Hour Speeds in Richmond District

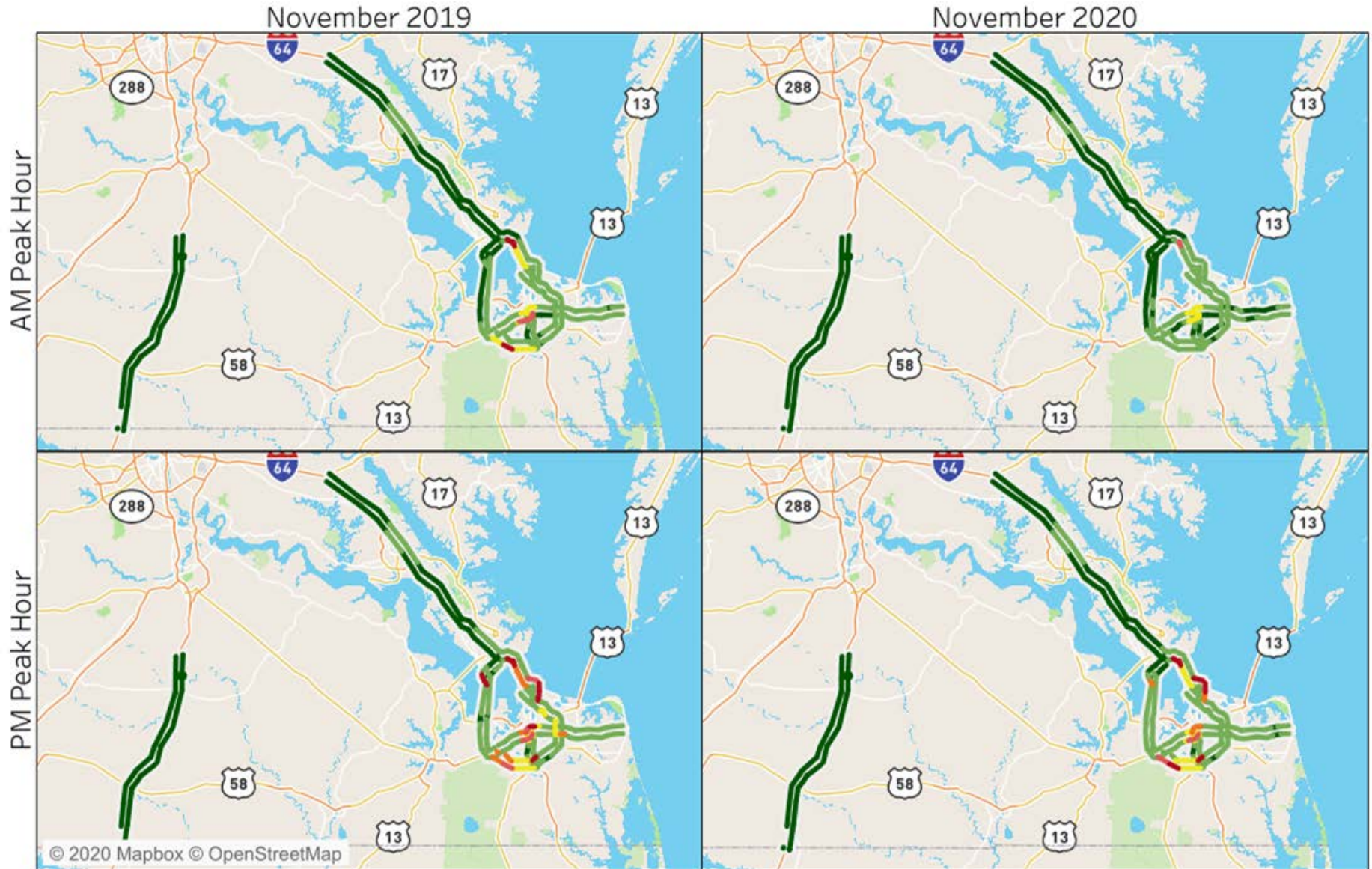


50th % Speed Maps



Speed Trends

Weekday Peak Hour Speeds in Hampton Roads District



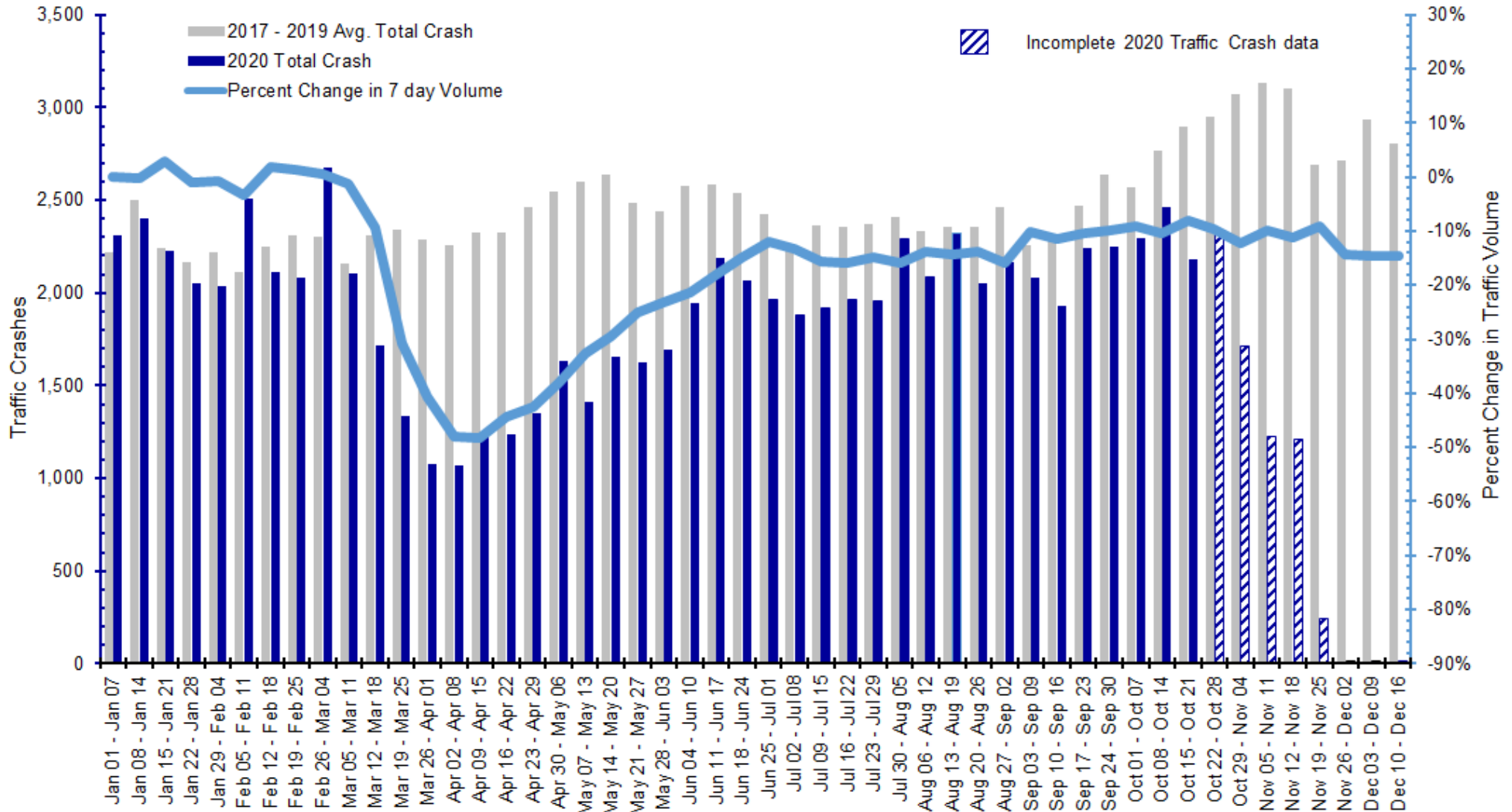
50th % Speed Maps



Crash Trends - All Systems

Total Weekly Trends

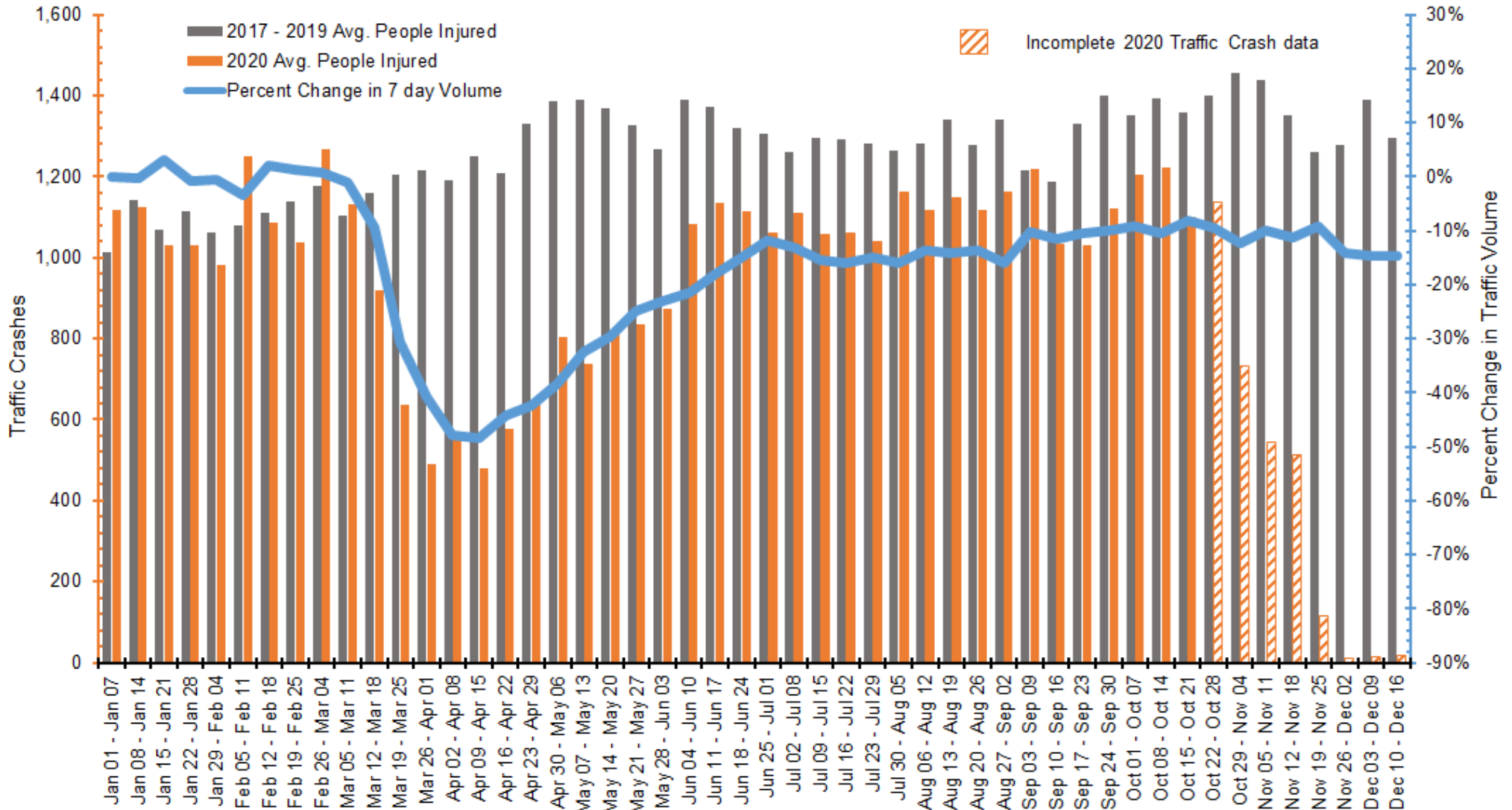
Weekly Total Crashes - from January 1 to December 16



Crash Trends - All Systems

Weekly Trends for Injury Crashes

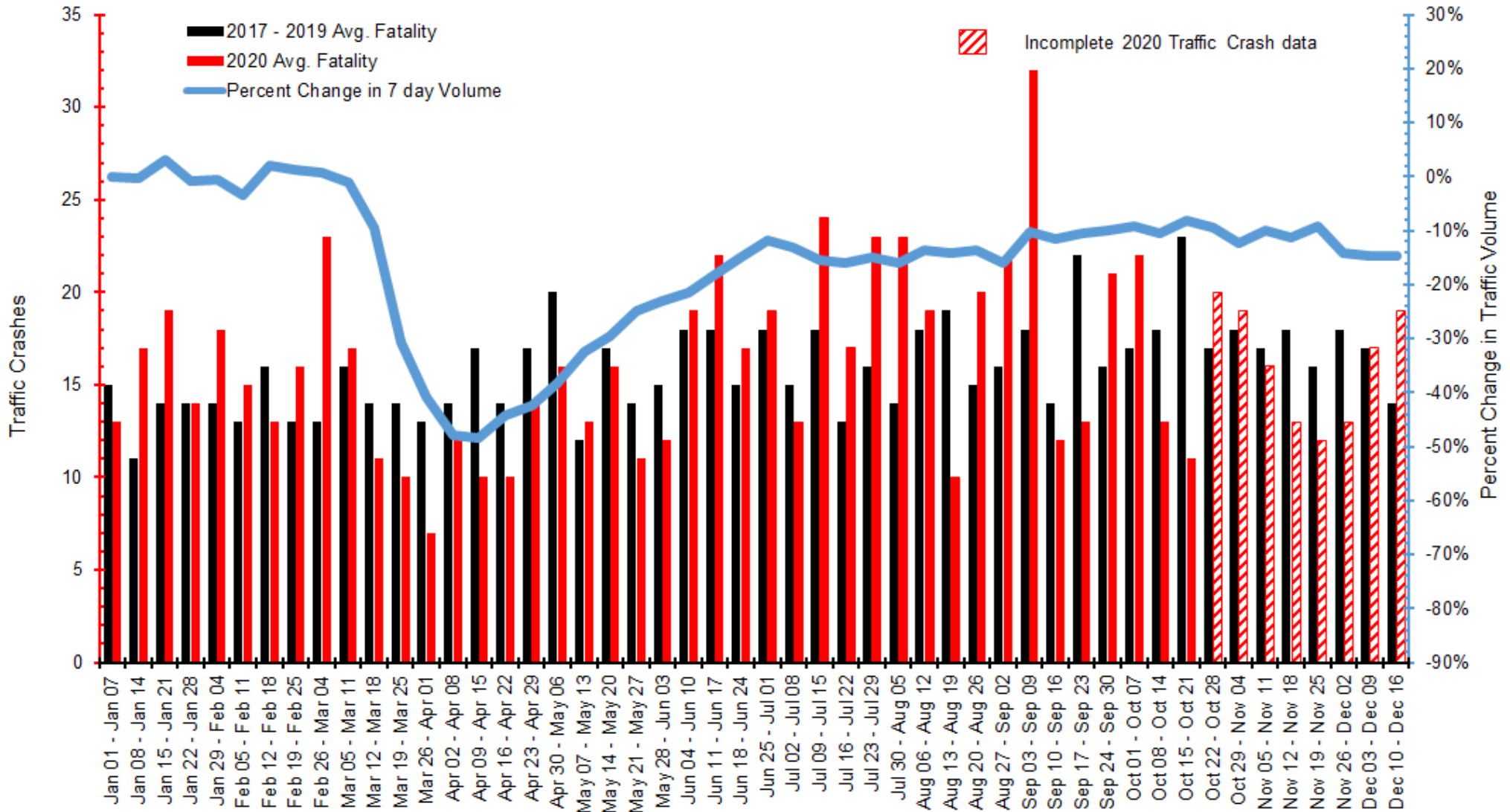
Weekly Injury Crashes - from January 1 to December 16



Crash Trends - All Systems

Weekly Trends for Fatal Crashes

Weekly **Fatal** Crashes - from January 1 to December 16



Questions

A vertical orange bar is positioned to the left of the contact information.

Mena.Lockwood@vdot.Virginia.gov