

# Traffic Volume and Speed Trends

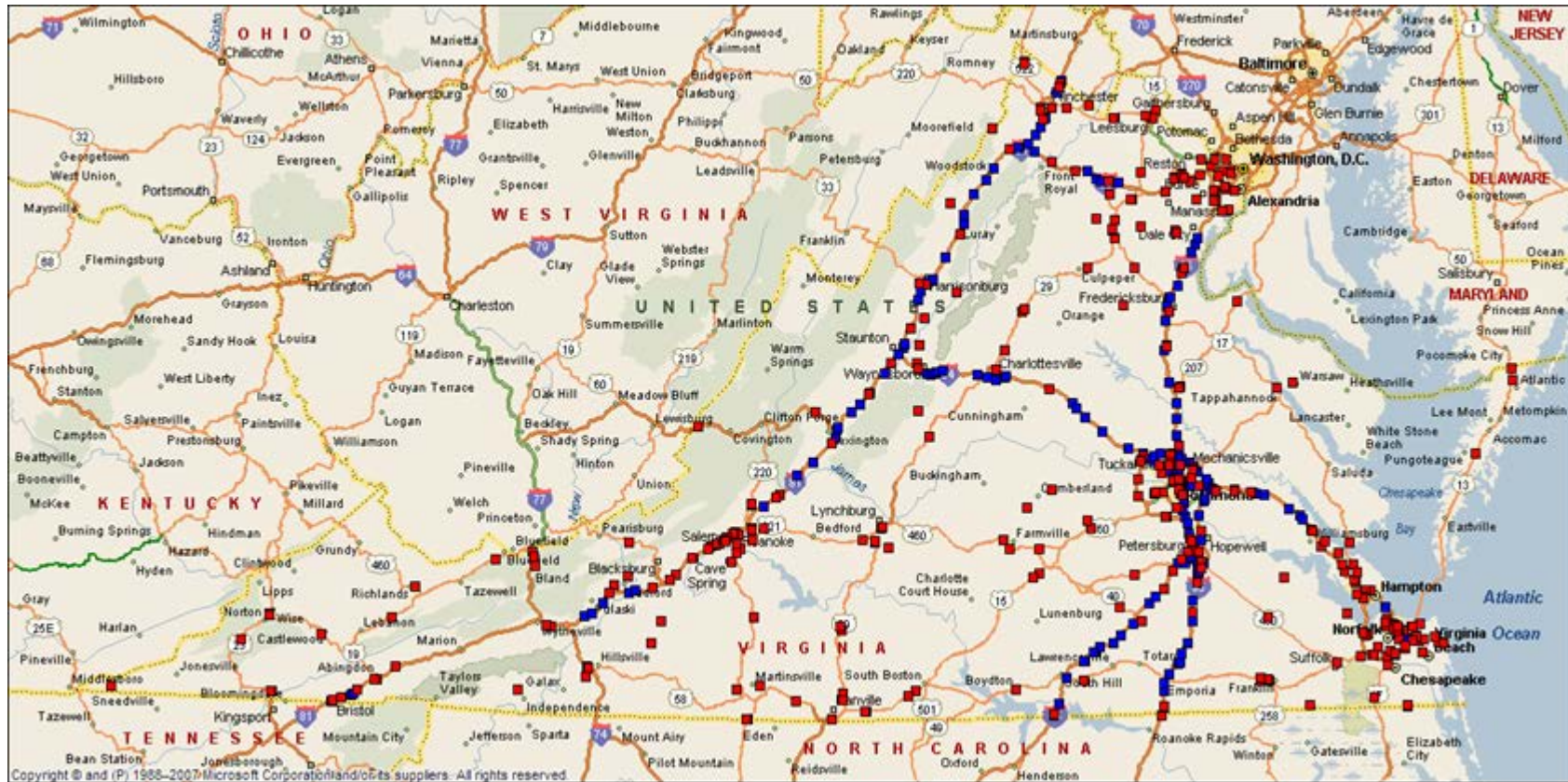
CTB Meeting

**Mena Lockwood P.E.,  
VDOT Traffic Engineering Division**

**06/22/21**

# Volume Source

## VDOT Traffic Monitoring System (TMS)

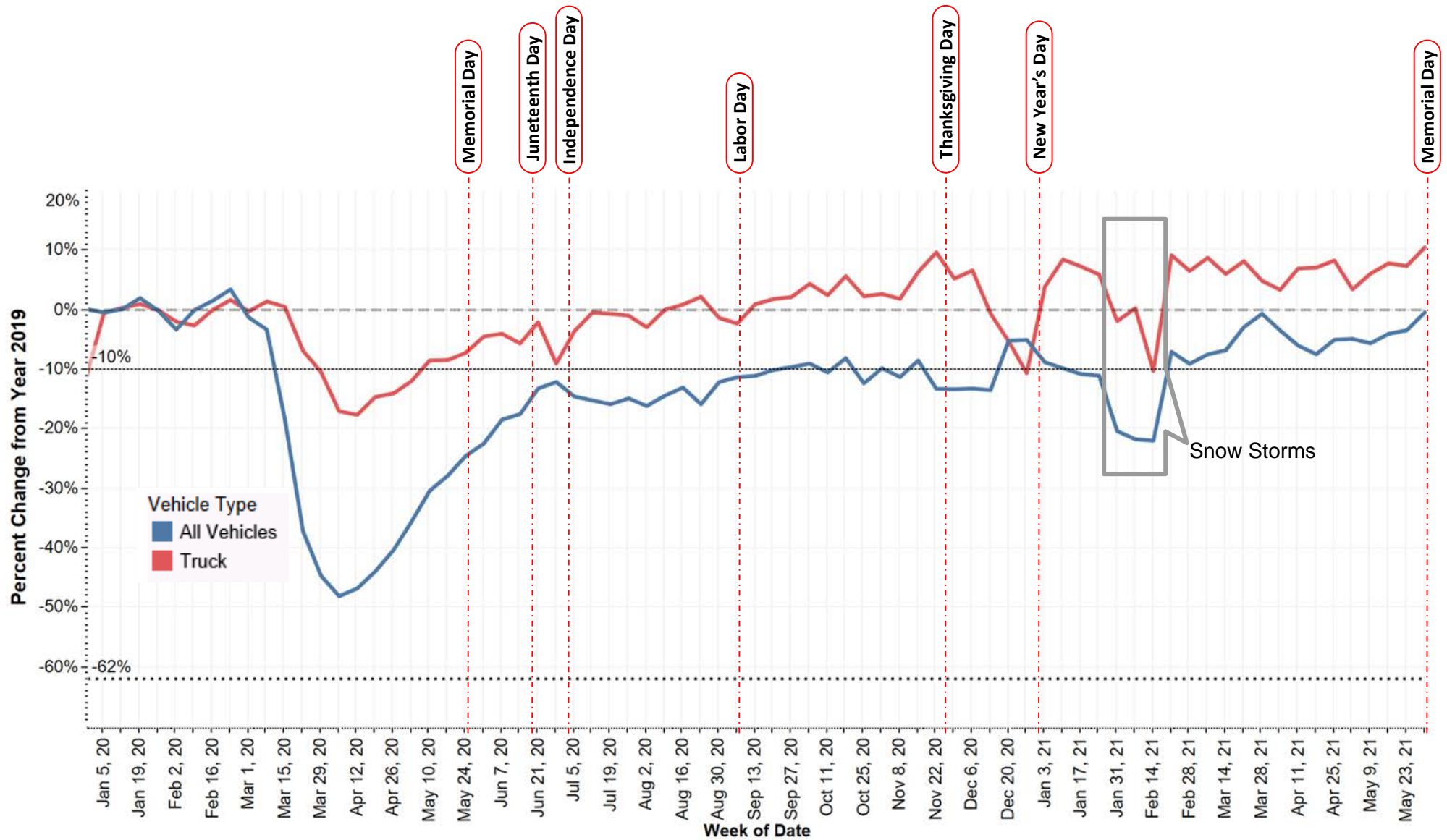


### 512 Continuous Count Stations

- 306 Road Sensors (CCS)
- 206 Non-Intrusive (Radar) Sensors (NCCS)

# Volume Trends

## STATEWIDE WEEKLY VOLUME CHANGE

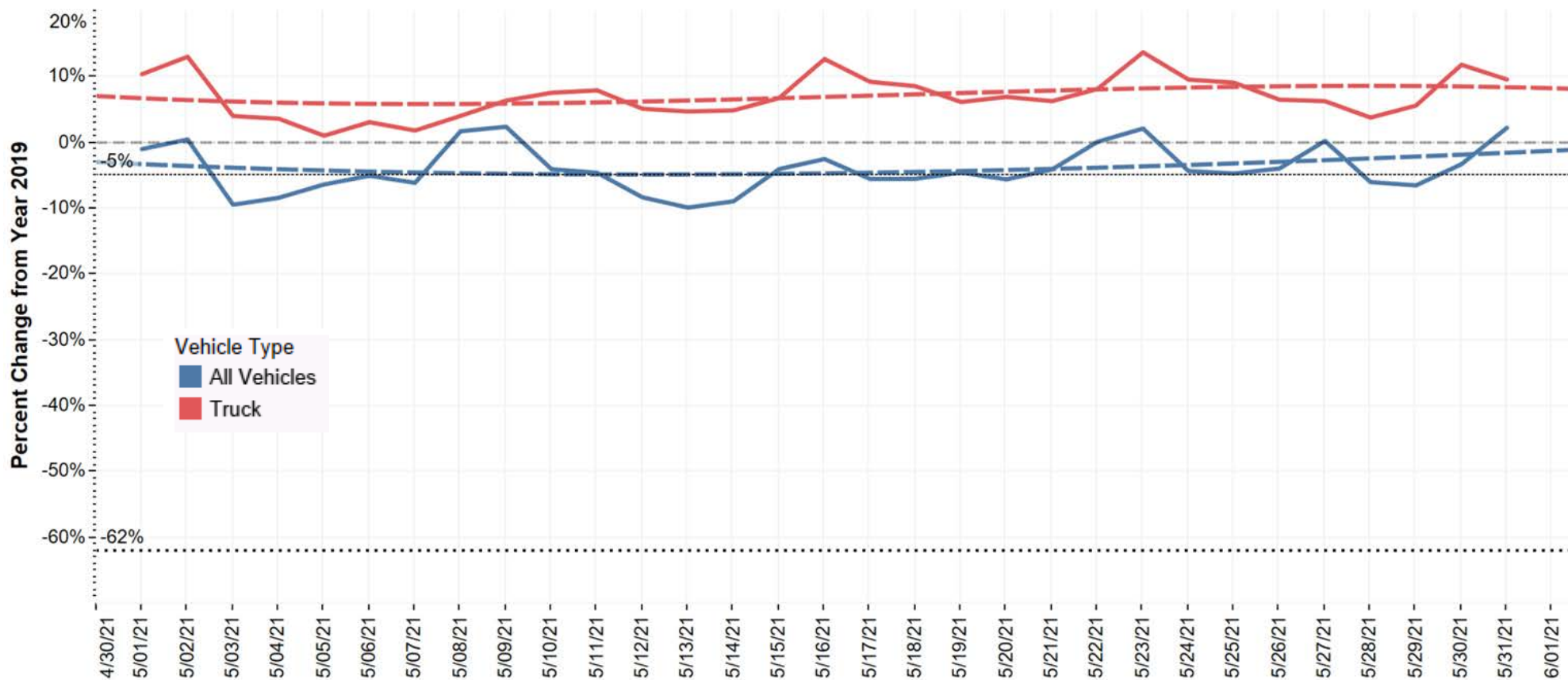


Snow Storms:

01/31 - 02/03 – Groundhog Day nor'easter | 02/07 - Super Bowl nor'easter | 02/13, 02/17, 02/18 - Unnamed Snow storms

# Volume Trends

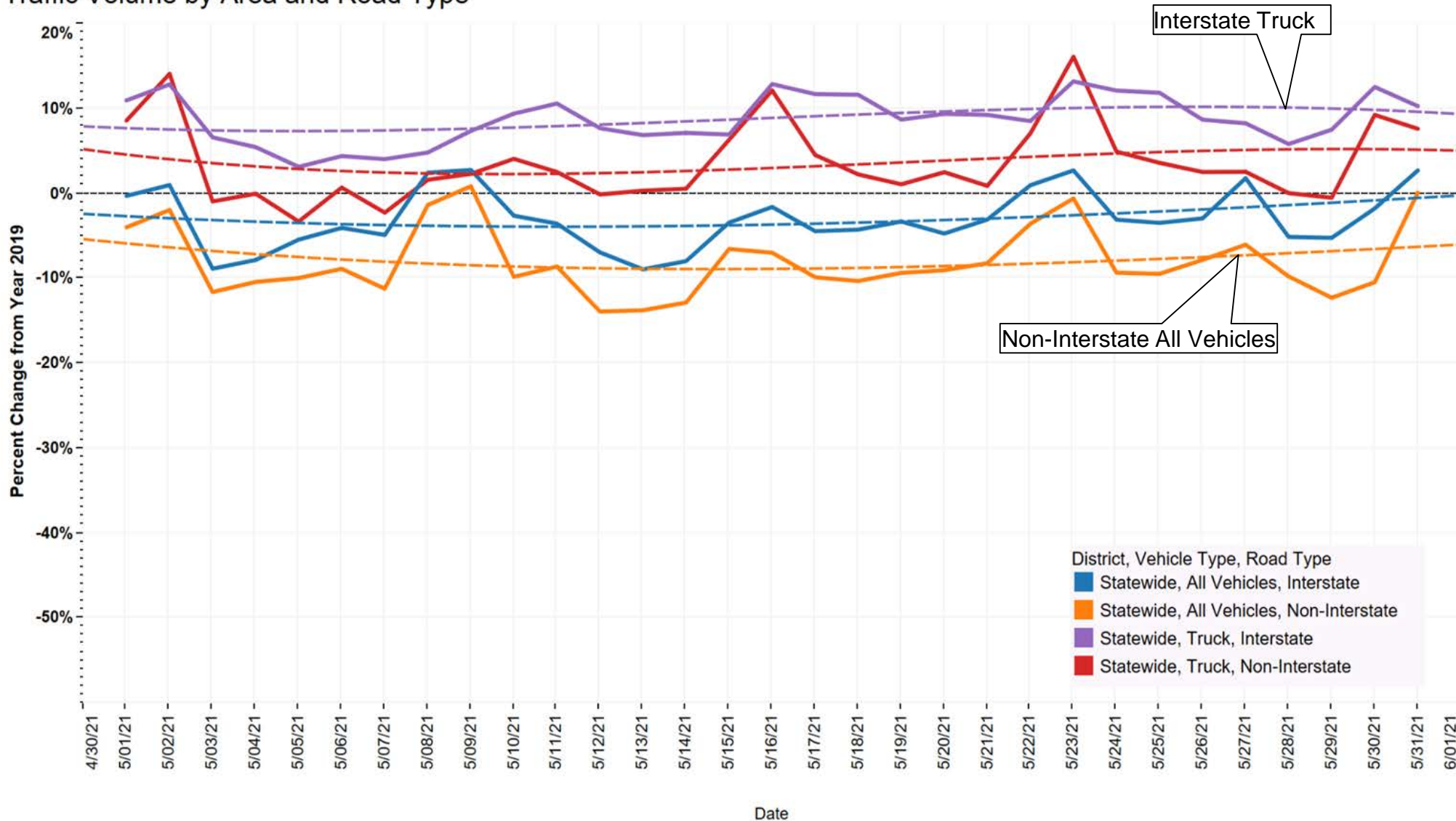
STATEWIDE DAILY VOLUME CHANGE in MAY 2021



# Volume Trends

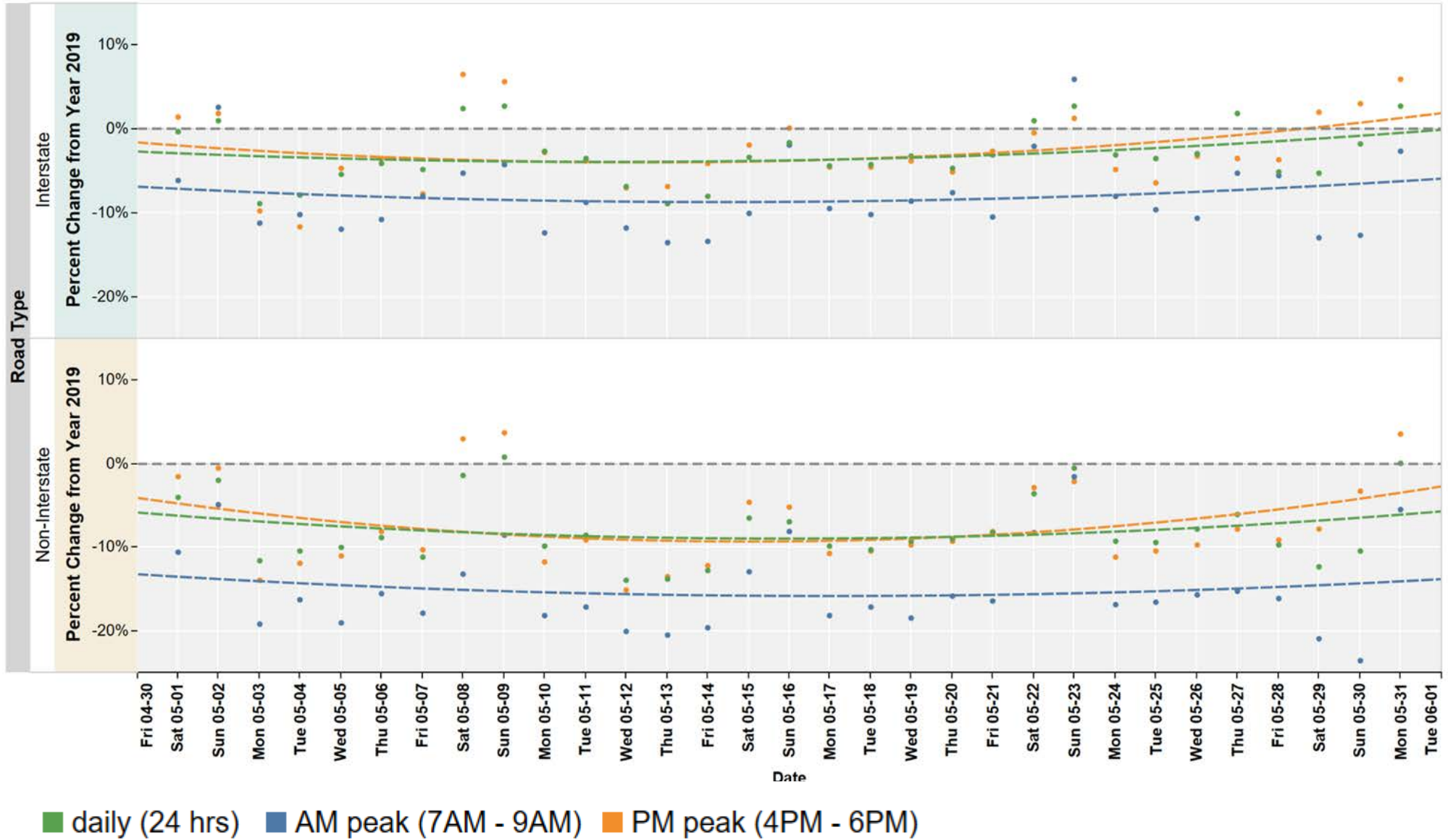
## All Vehicles and Truck Daily Volume Change Statewide IN MAY 2021

Traffic Volume by Area and Road Type



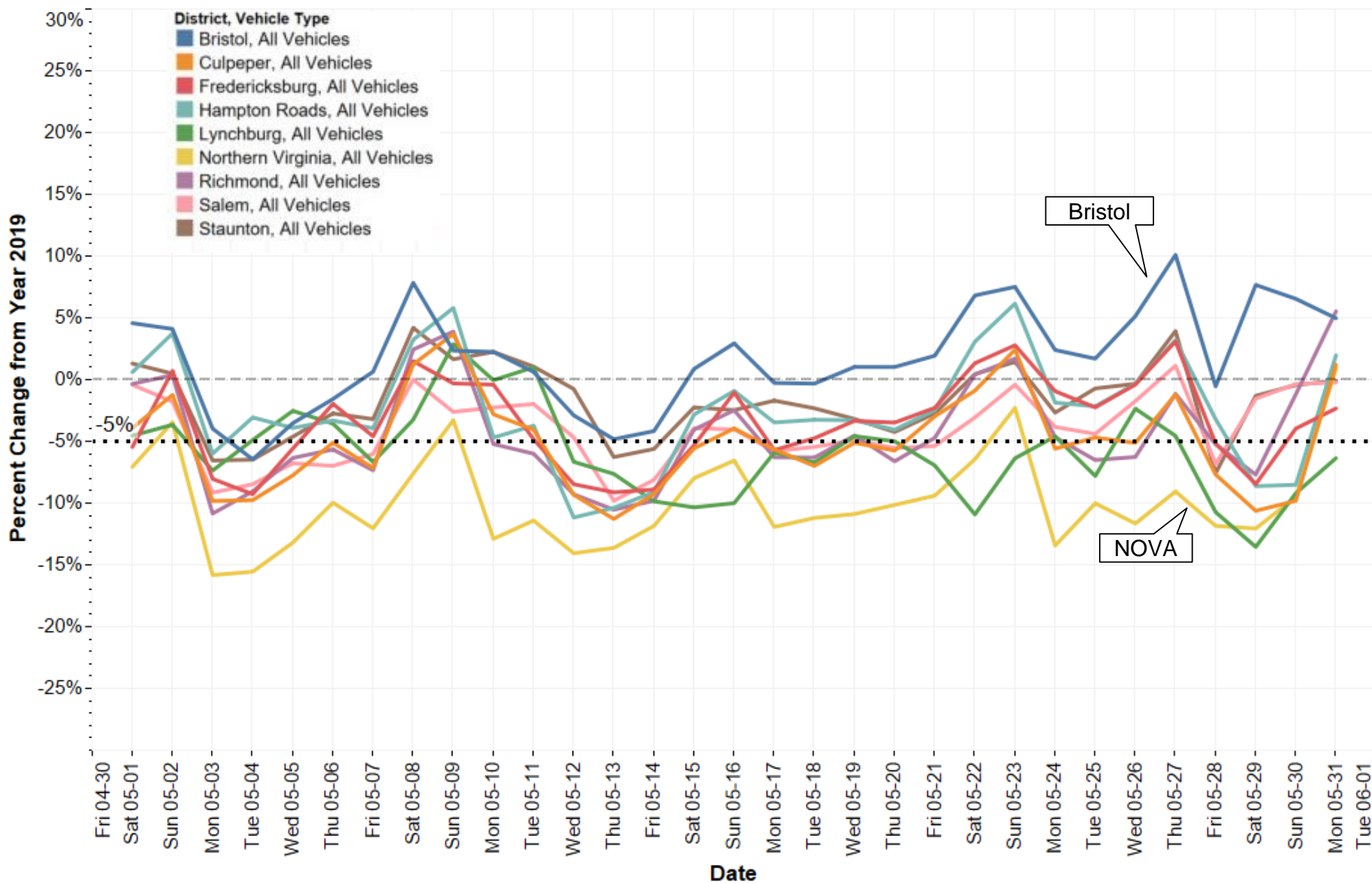
# Volume Trends

## Statewide PEAK PERIOD Volume Change for All Vehicles in MAY 2021



# Volume Trends

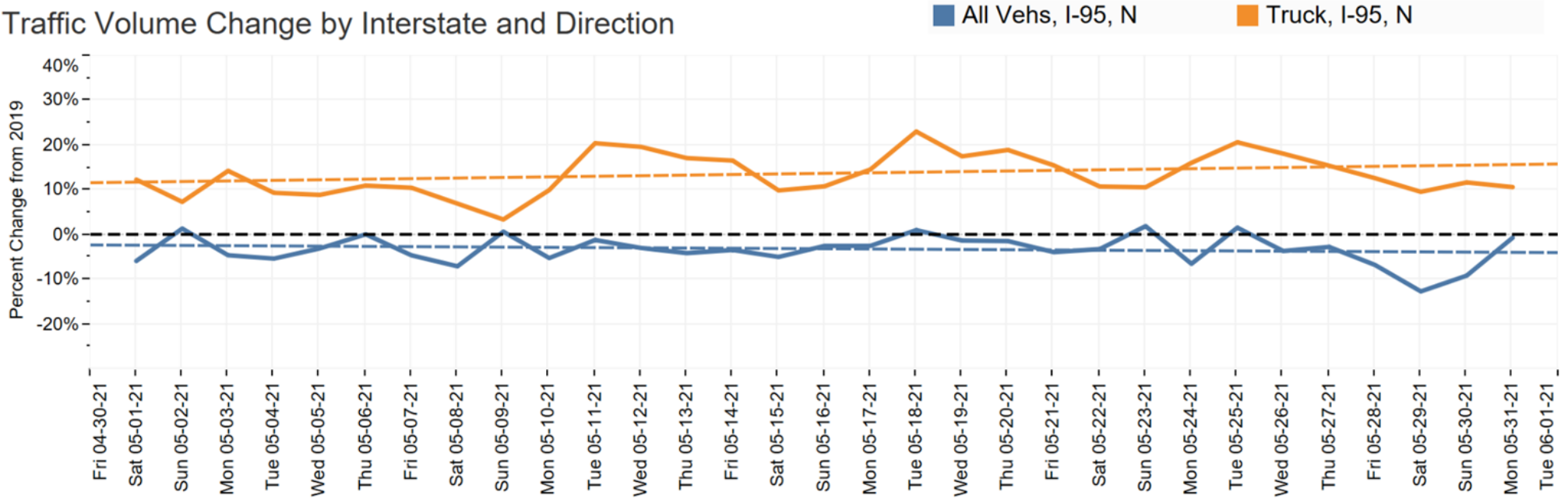
## All Vehicles Volume Change By District: MAY 2021



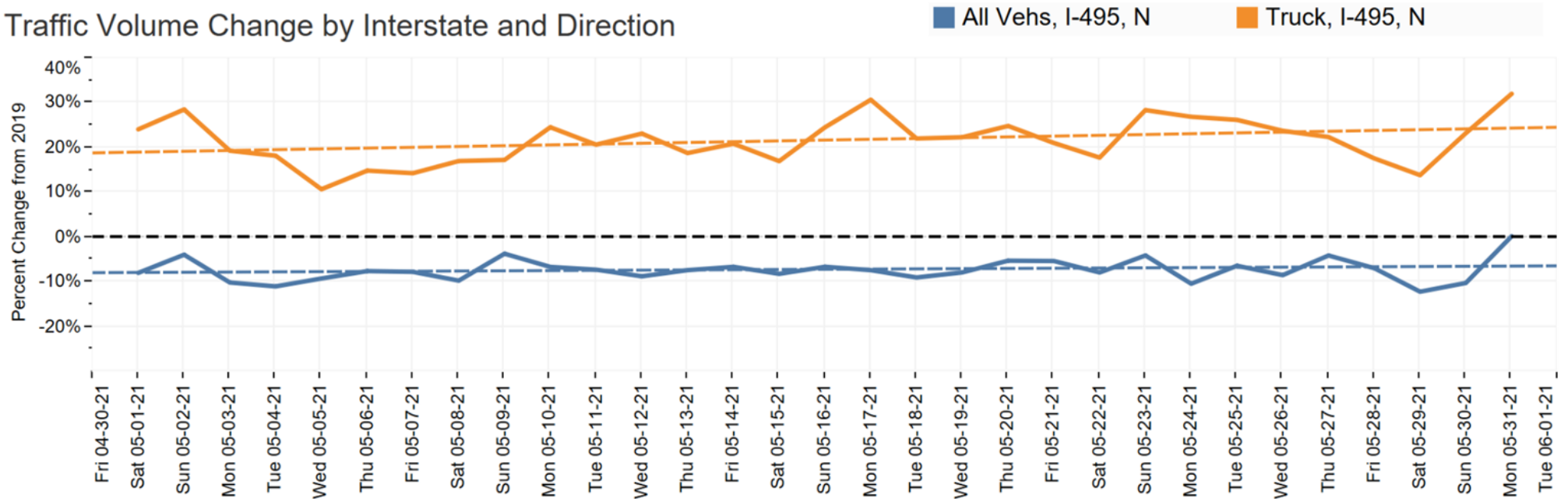
# Volume Trends

## Daily Volume Change on Interstates in Northern Virginia IN MAY 2021

Traffic Volume Change by Interstate and Direction



Traffic Volume Change by Interstate and Direction



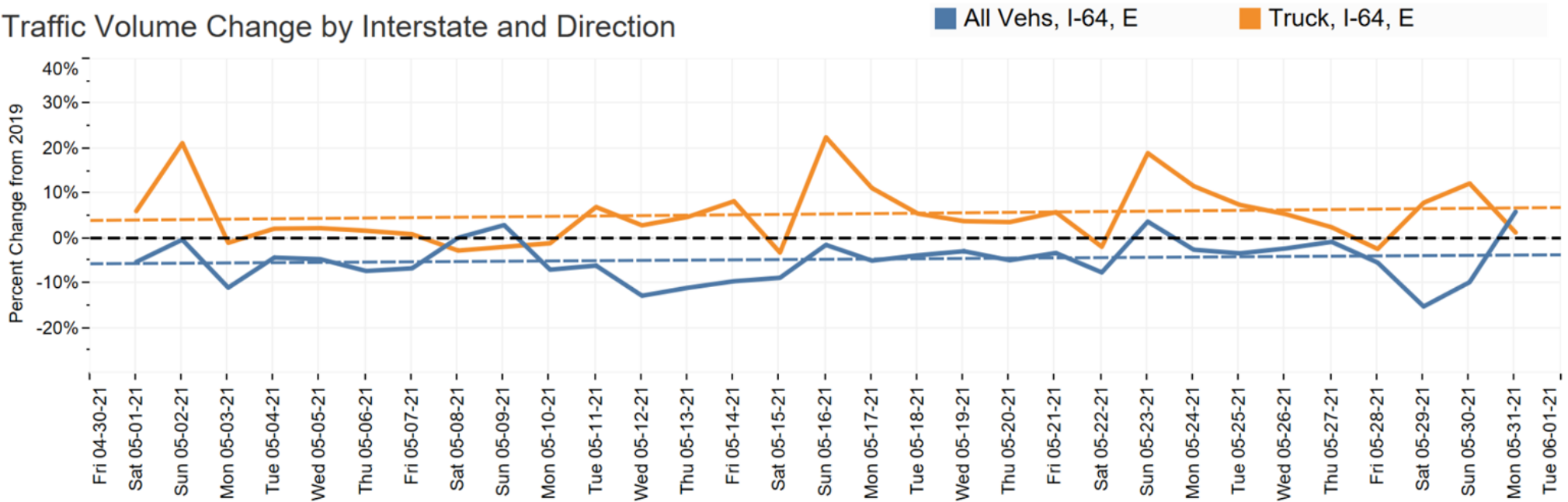
Date



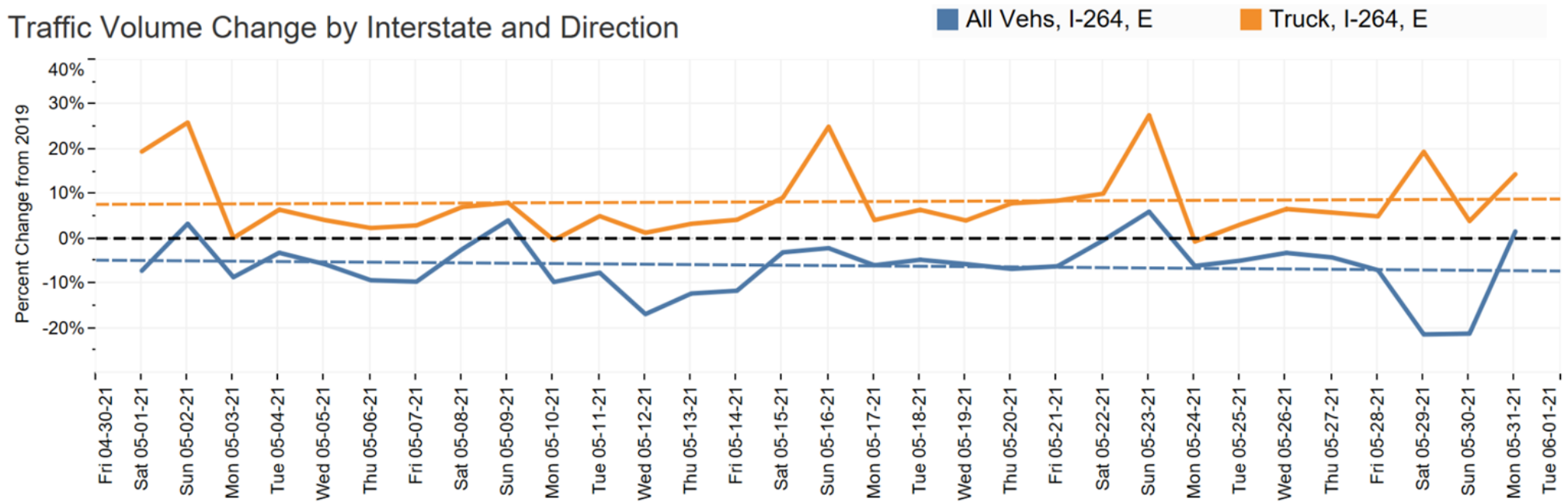
# Volume Trends

## Daily Volume Change on Interstates in Hampton Roads IN MAY 2021

Traffic Volume Change by Interstate and Direction



Traffic Volume Change by Interstate and Direction

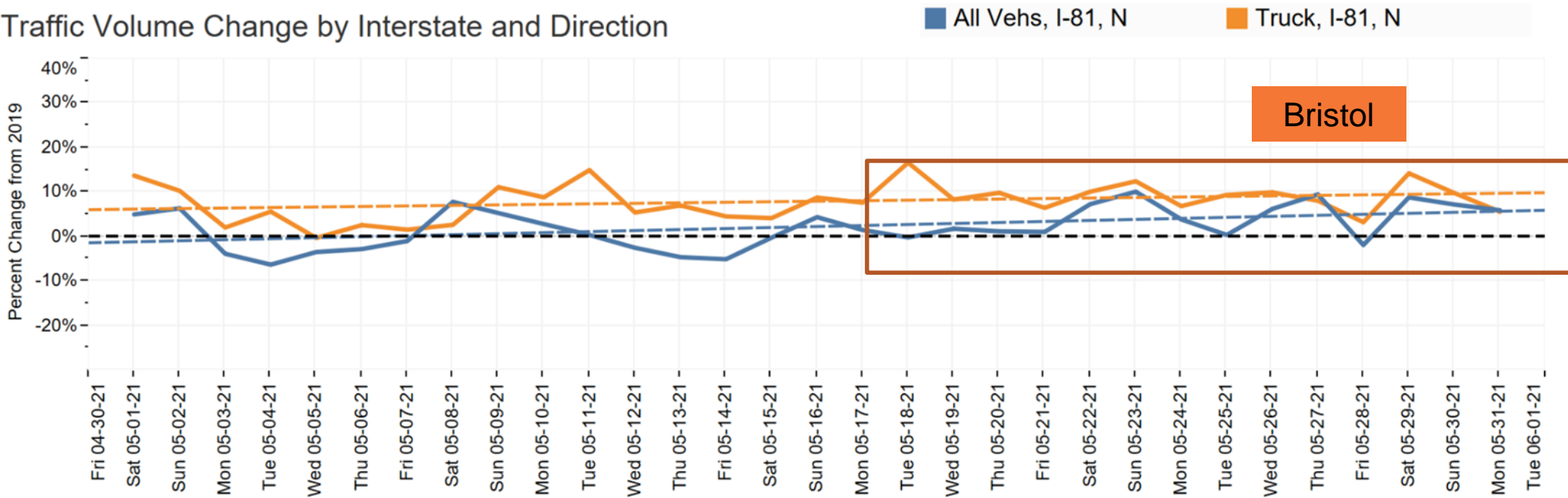


Date

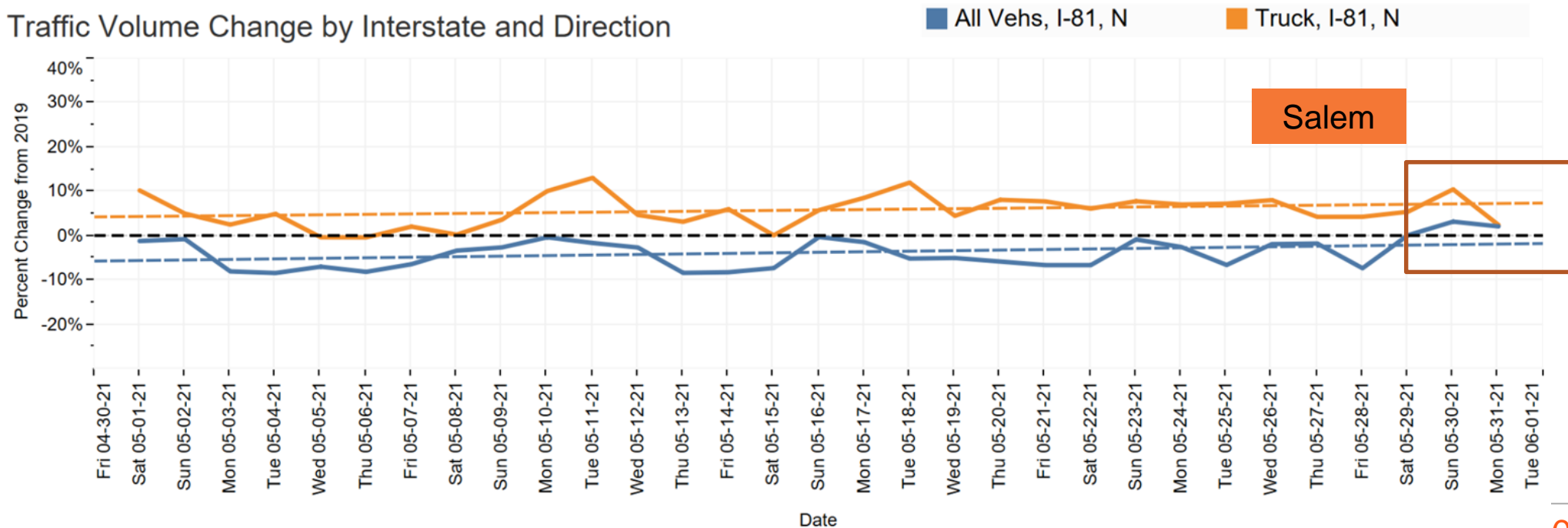
# Volume Trends

## Daily Volume Change on I-81 in Bristol & Salem IN MAY 2021

Traffic Volume Change by Interstate and Direction



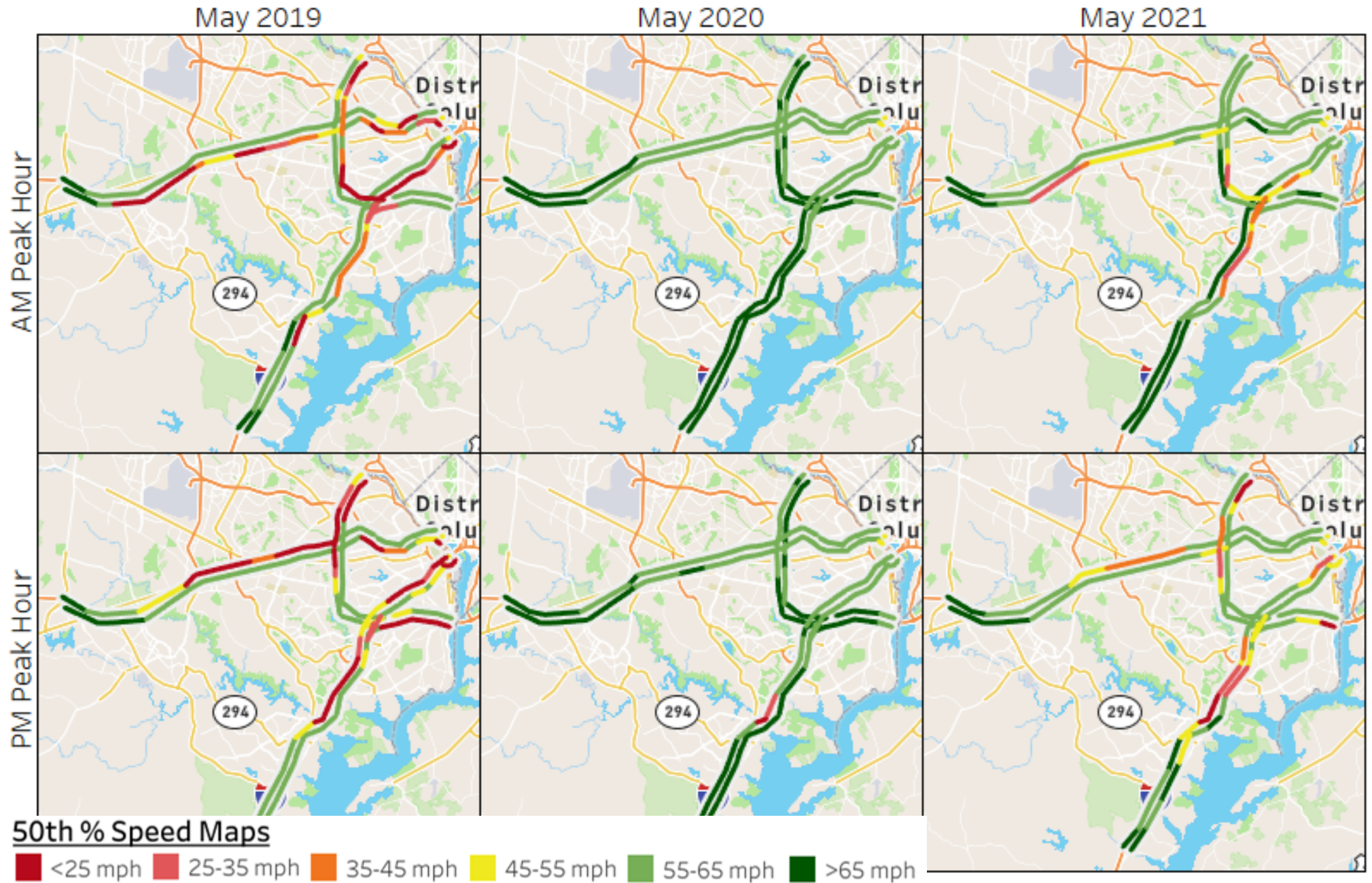
Traffic Volume Change by Interstate and Direction



Date

# Speed Trends

## Weekday Peak Hour Speeds in Northern Virginia District

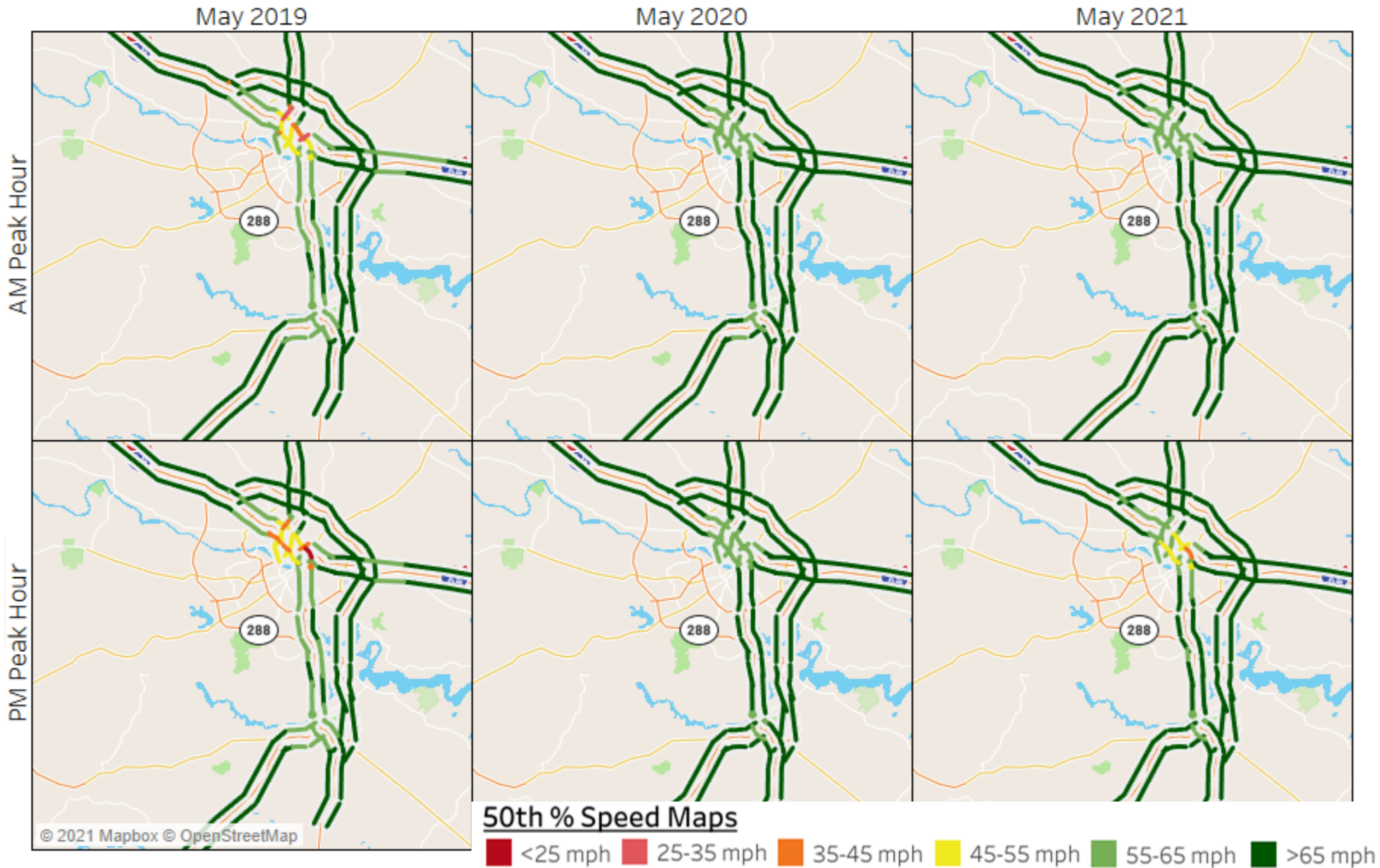


50th % Speed Maps

<25 mph 25-35 mph 35-45 mph 45-55 mph 55-65 mph >65 mph

# Speed Trends

## Weekday Peak Hour Speeds in Richmond District



# Speed Trends

## Weekday Peak Hour Speeds in Hampton Roads District

