



# Rail Industrial Access

Hershey Chocolate of Virginia, Inc.

Michael Todd, Director of Rail Programs

December 6, 2022



# Hershey Chocolate of Virginia, Inc.

- **Location:** Stuarts Draft, Augusta County
- **Purpose:** Snack company manufacturing more than 80 brands which include Hershey's, Reese's, Kit Kat, SkinnyPop, and Jolly Rancher
- **Activity:** Rail is used for incoming raw material from Midwest and Southern U.S.





**Reese's**  
**pieces**  
PEANUT BUTTER CANDY IN A CRUNCHY SHELL  
WT .49 OZ (13 g)

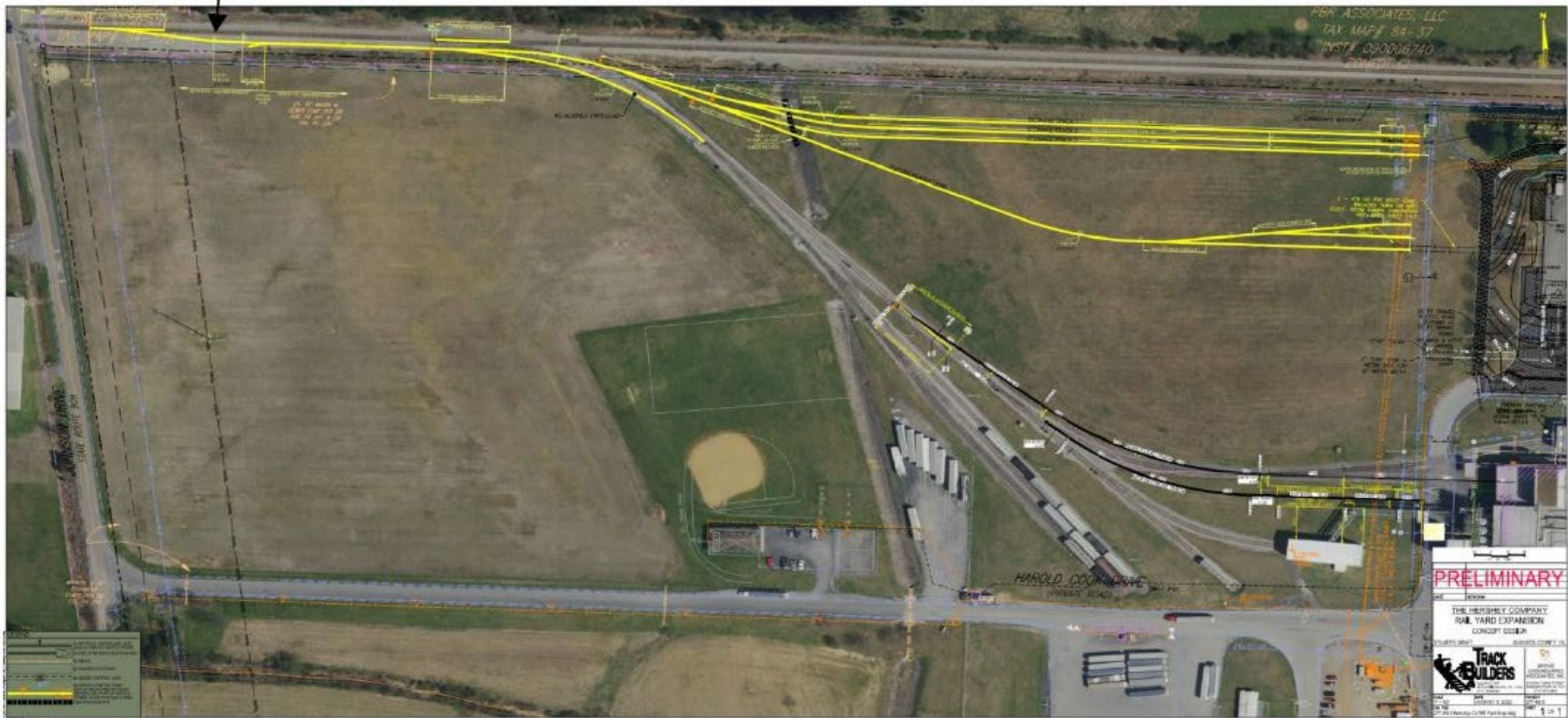
## Hershey Chocolate of Virginia, Inc.

### Request:

- \$450,000 (\$5M total rail cost)
- 4,750 ft of new industrial spur
- \$140M Total Investment



# Site Location







## Project Benefits

- Carloads: 145 / year (1,175 existing)
- Employment: 111 new jobs  
Existing EDA  
Below Avg. Unemployment
- Funding: 91% private match for  
Rail Construction

# Project Score

Categories	Score
Carloads	8
Jobs	20
VA % of Total Investment	10
Private % of Rail Investment	10
Local Unemployment	0
Economic Development	10
Shortline	0
<b>TOTAL</b>	<b>58</b>





# Recommendation

