



COMMONWEALTH of VIRGINIA

Commonwealth Transportation Board

Shannon Valentine
Chairperson

1401 East Broad Street
Richmond, Virginia 23219

(804) 786-2701
Fax: (804) 786-2940

Agenda item # 5

RESOLUTION OF THE COMMONWEALTH TRANSPORTATION BOARD

January 12, 2022

MOTION

Made By: Mr. Fowlkes **Seconded By:** Mr. Johnsen
Action: Motion carried, unanimously

**Title: Location Approval for the Progress Park Connector
Wythe County and the Town of Wytheville**

WHEREAS, State Highway Project 9999-098-840, P101, R201, C501 (UPC# 115540) known as the Progress Park Connector will construct a new roadway approximately 2.3 miles in length, beginning at Nye Road approximately 0.5 mile south of Route 610 (Peppers Ferry Road) in the Town of Wytheville and ending at existing E. Lee Trinkle Drive in the Progress Park Industrial Complex in Wythe County (the "Project"); and

WHEREAS, in accordance with the § 33.2-208 of the *Code of Virginia* and the policies and regulations of the Commonwealth Transportation Board (CTB), including 24 VAC 30-380-10, the Virginia Department of Transportation (VDOT) held a Virtual Location and Design Public Hearing ("Hearing") on Tuesday, November 16, 2021, at 5:00 p.m. for the purpose of considering the three (3) alignment alternatives for the location of the Project as shown on the attached exhibit; and

WHEREAS, proper notice of the Hearing and the three (3) alignment alternatives to be considered were given in advance and posted on the Project website, and all citizens were given a full opportunity to express their opinions and recommendations on the alternatives under consideration, and their statements have been duly recorded; and

WHEREAS, the economic, social and environmental effects of the Project have been examined and given proper consideration and this evidence, along with all other relevant evidence, has been carefully reviewed; and

WHEREAS, VDOT's Environmental Division have completed environmental reviews and coordination to identify environmental resources in the project vicinity, provide natural and historic resource agencies an opportunity to review and comment on the project during development, determine the potential for environmental impacts upon the local community and surrounding area and identifies opportunities for avoidance and minimization of potential and unavoidable environmental impacts; and

WHEREAS, the Categorical Exclusion for the Project was approved by the Federal Highway Administration on August 16, 2021, in accordance with the National Environmental Policy Act; and

WHEREAS, the Wythe County Board of Supervisors, and the Wytheville Town Council endorsed the Preferred Alignment - Alternative Alignment #3 on November 24, 2021 for the location of the Project (see attached); and

WHEREAS, review of all data resulted in VDOT's recommendation that the Project be located on Alternative Alignment #3.

NOW, THEREFORE, BE IT RESOLVED, that the CTB hereby approves Alternative Alignment #3 as proposed and presented at the Hearing held on November 16, 2021, for the location of the Project.

#####

Commonwealth Transportation Board (CTB) Decision Brief

Progress Park Connector in Wythe County and the Town of Wytheville

Issue: The Progress Park Connector will provide the construction of a new roadway approximately 2.3 mile in length, beginning at Nye Road approximately 0.5 mile south of Route 610 (Peppers Ferry Road) in the Town of Wytheville and ending at existing E. Lee Trinkle Drive in the Progress Park Industrial Complex in Wythe County. The new roadway will include grading and the construction of two (2) twelve-foot (12') lanes with six-foot (6') shoulders, four-foot (4') of which will be paved on each side. Approximately 1,300 feet of Lovers Lane will be realigned at its intersection with the Progress Park Connector, which will include grading and the construction of two (2) twelve-foot (12') lanes with two-foot (2') paved shoulders on each side. Nye Road will be widened at the new intersection with the Progress Park Connector to accommodate an additional twelve-foot (12') wide left turn lane with 200' storage length and 200' taper length from the eastbound direction. Curb and gutter will be installed with ten-foot (10') wide shoulders at the new intersection of Nye Road and the Progress Park Connector.

Facts:

- Provides a direct connection to Progress Park from Nye Road to E. Lee Trinkle Drive.
- Reduces travel times for both employees and freight associated with the developing Progress Park, which currently has six existing industries on 1,210 acres in central Wythe County.
- Boosts economic development, regional employment and streamline access to this facility.

Recommendations: The Virginia Department of Transportation (VDOT) recommends approval of the Preferred Alignment - Alternative Alignment #3 for the location of the Project as proposed and presented at the Hearing held on November 16, 2021, and shown on the attached exhibit.

Action Required by CTB: § 33.2-208 of the *Code of Virginia* requires the majority vote of the CTB to locate and establish the routes to be followed by the roads comprising systems of state highways between points designated in the establishment of such systems.

Result, if Approved: If approved by the CTB, the Project will move forward to the final design phase.

Options: Approve, Deny or Defer

Public Comments/Reaction: VDOT held a Virtual Location and Design Public Hearing on November 16, 2021. Citizens were able to view the displays on the Project website and submit comments. Five (5) citizens attended the Hearing. There were zero (0) written comments and

zero (0) verbal comments received for the record. The Wythe County Board of Supervisors and the Wytheville Town Council endorsed the Preferred Alignment - Alternative Alignment #3 on November 24, 2021 for the location of the Project.



COMMONWEALTH of VIRGINIA

DEPARTMENT OF TRANSPORTATION

Stephen C. Brich, P.E.
Commissioner

1401 East Broad Street
Richmond, Virginia 23219

(804) 786-2701
Fax: (804) 786-2940

January 3, 2022

The Honorable Shannon Valentine
The Honorable Stephen C. Brich, P. E.
The Honorable Jennifer Mitchell
The Honorable Jerry L. Stinson
The Honorable Mary Hughes Hynes
The Honorable Alison DeTuncq
The Honorable Bert Dodson, Jr.
The Honorable W. Sheppard Miller III
The Honorable Carlos M. Brown
The Honorable Cedric Bernard Rucker
The Honorable Stephen A. Johnsen
The Honorable Mark H. Merrill
The Honorable E. Scott Kasprowicz
The Honorable Raymond D. Smoot, Jr.
The Honorable Marty Williams
The Honorable Frederick T. Stant, III
The Honorable Greg Yates

Subject: Location Approval for the Progress Park Connector in Wythe County and the Town of Wytheville.

Dear Commonwealth Transportation Board Members:

The Department has initiated the above request for Location Approval for your consideration. The proposed Location Approval on State Highway Project 9999-098-840, P101, R201, C501 has been recommended for approval by the Department's staff.

I have reviewed the staff's recommendations and determined that this request should be considered by the Board.

Sincerely,

Barton A. Thrasher, P.E.
Chief Engineer



November 23, 2021

Virginia Department of Transportation
Attn: James Jones, Project Manager
2111 Bonham, Road
Bristol, VA 24201

COUNTY of BLAND

Board of Supervisors

Karen Hodock
Supervisor
Rocky Gap District

Randy Johnson
Supervisor
Mechanicsburg District

K. Adam Kidd
Supervisor
Sharon District

Stephen Kelley
Supervisor
Seddon District

RE: Letter of Support: VDOT Progress Park Connector Road Preferred Alternate Alignment #3

Commonwealth Transportation Board:

On behalf of the County of Bland and the Bland County Board of Supervisors, please accept this letter of support for the location and design of 'Preferred Alternate Alignment #3' for the Progress Park Connector Road.

The timing for this connector road aligns well with the expansion of industry in Progress Park, to include the most recent announcement of Blue Star NBR to manufacturer nitrile and gloves in Lot 24. Bland County is a regional partner of Wythe County on various projects and endeavors. We view the success of Wythe County having a positive impact on the lives and wellbeing of its citizens as well as citizens and residents of the surrounding counties. We support to the future of industry in Progress Park and the value, safety, and connectivity this project will bring.

Therefore, on behalf of the County of Bland, we respectfully submit this letter of support.

Sincerely,

Eric R. Workman, Ed.D.
County Administrator

Eric R. Workman, Ed.D.
County Administrator

P.O. Box 510
Bland, Virginia 24315

Telephone 276 688 4622
Toll free 800 519 3468
Fax 276 688 9758

Email:
eworkman@bland.org
www.blandcountvva.gov

CTB LOCATION AND DESIGN PUBLIC HEARING SUMMARY

Progress Park Connector Wythe County and Town of Wytheville

State Project: 9999-098-840, P101, R201, C501

UPC: 115540

Federal Project: STP-098-1(045)

Fr: Int. Nye Road

To: Int. E. Lee Trinkle Dr.

Project Length: 2.291 Mi.

PROJECT HISTORY – The project alignment was originally presented by Wythe County to the public on March 23, 2017. As the Department’s plan development was underway, a historic cemetery was discovered on the proposed alignment. As a result of this, the western portion of the alignment was shifted to the north to avoid the cemetery and an approved solar farm, which is currently being constructed on a parcel to the south of the current alignment. The alignment alternatives were presented by the Department at the November 16, 2021 Virtual Location and Design Hearing and Alternative alignment #3 was approved by letters of support from the Wythe County Board of Supervisors and the Town of Wytheville dated November 24, 2021, the Mount Rogers Planning District Commission, by letter of support dated November 29, 2021, the Bland County Board of Supervisors, by letter of support dated November 23, 2021, and Virginia’s Industrial Advancement Alliance, by letter of support dated November 23, 2021 (see attached).

Currently, traffic accesses the Progress Park Industrial complex by traveling approximately 3.5 miles on Route 610 (Peppers Ferry Road) or by traveling approximately 5 miles along Nye Road and Kent’s Lane. The project is in close proximity to I-77 Exit 41 and the intersection of I-81 and I-77. This project is currently planned to be advertised with UPC 116164, which is located approximately 0.5 mile from the western terminus of the connector road. It is anticipated that surplus material from the connector road may be used on UPC 116164.

PROJECT PURPOSE - The purpose of this project is to construct a new road approximately 2.3 miles in length from Nye Road to E. Lee Trinkle Drive, providing a direct connection to Progress Park in Wythe County.

TYPICAL SECTION – The Progress Park Connector will provide two (2) twelve-foot (12’) wide travel lanes with six-foot (6’) shoulders, four-foot (4’) of which will be paved on each side. The proposed typical section for Lovers lane will provide two (2) twelve-foot (12’) travel lane with two-foot (2’) paved shoulders on each side. Nye Road will be widened at the new intersection with the Progress Park Connector to accommodate an additional twelve-foot (12’) left turn lane with 200’ storage length and 200’ taper length. Curb and gutter will be installed with ten-foot (10’) shoulders at the new intersection of Nye Road and the Progress Park Connector.

CTB Location and Design Public Hearing Summary
Location Approval for the Progress Park Connector
Wythe County and Town of Wytheville
January 12, 2022
Page 2 of 2

PUBLIC HEARING –

Type - Location and Design
Date - November 16, 2021
Location - Virtual

ATTENDANCE – Five (5) citizens attended the Virtual Location and Design Hearing.

COMMENTS RECEIVED – No (0) written and no (0) verbal comments were received for the record.

ENVIRONMENTAL DATA – The National Environmental Policy Act process for Project # 9999-098-840, P101, R201, C501 (UPC# 115540) has been completed and a Categorical Exclusion was approved by the Federal Highway Administration on August 16, 2021.

ESTIMATED COST –

Preliminary Engineering	-	\$ 1,593,554
Right of Way and Utilities	-	\$ 3,600,000
Construction	-	<u>\$ 18,140,000</u>
Total estimated cost	-	\$ 23,333,554

ADVERTISEMENT – Construction is currently scheduled for late 2023.

RIGHT OF WAY – (2) families, (0) businesses and (0) non-profit organizations will be displaced as a result of this project development.

TRAFFIC DATA – It is anticipated that in the design year of 2046 the average daily traffic volume will be 6,070 vehicles per day on the new roadway.

STAFF RECOMMENDS – Approval of Preferred Alignment - Alternative Alignment #3 as proposed and presented at the Hearing for the location of the Progress Park Connector.



MOUNT ROGERS PLANNING DISTRICT COMMISSION

WILLIE GREENE, Chair
RANDY PENNINGTON, Vice Chair

STEVEN GOBBLE, Treasurer
AARON SIZEMORE, Executive Director

1021 Terrace Drive Marion, Virginia 24354 Phone 276-783-5103 Fax 276-783-6949

November 29, 2021

Virginia Department of Transportation
2111 Bonham, Road
Bristol, VA 24201
ATTN: James Jones, Project Manager

RE: VDOT Progress Park Connector Road – Preferred Alternate Alignment #3

Commonwealth Transportation Board:

After considerable planning and due diligence by VDOT and partners, Mount Rogers Planning District Commission would like to voice support for the 'Preferred Alternate Alignment #3' for the Progress Park Connector Road. The work and preparation have identified this to be the most optimal path forward that addresses concerns, and most effectively implements the project.

The timing for this connector road aligns well with the expansion of industry in Progress Park that includes the most recent announcement of Blue Star NBR to manufacturer nitrile and gloves in Lot 24. We look forward to the future of industry in the park and the value, safety, and connectivity this project will bring.

Sincerely,

Aaron Sizemore
Executive Director
Mount Rogers PDC

*SERVING LOCAL GOVERNMENTS IN
BLAND – CARROLL – GRAYSON – SMYTH – WASHINGTON – WYTHE
BRISTOL – GALAX*

MRPDC is an equal opportunity provider and employer.

TOWN OF WYTHEVILLE

COUNCIL-MANAGER FORM OF GOVERNMENT SINCE 1924

TOWN COUNCIL

MAYOR
BETH A. TAYLOR

VICE-MAYOR
CATHY D. PATTISON

COUNCIL MEMBERS
HOLLY E. ATKINS
MARK J. BLOOMFIELD
GARY L. GILLMAN



Wytheville...there's only one!

P.O. BOX 533
150 EAST MONROE STREET
WYTHEVILLE, VIRGINIA 24382-0533
TELEPHONE (276) 223-3333
WWW.WYTHEVILLE.ORG

TOWN MANAGER
BRIAN FREEMAN
(276) 223-3450

TOWN TREASURER
MICHAEL G. STEPHENS, MGT
(276) 223-3333

CLERK OF COUNCIL
SHERRY G. CORVIN, CMC
(276) 223-3349

TOWN ATTORNEY
MICHELLE WORKMAN CLAYTON
(276) 223-3393

November 24, 2021

Virginia Department of Transportation
Attn: James Jones, Project Manager
2111 Bonham Road
Bristol, Virginia 24201

RE: Letter of Support for VDOT Park Connector Road
Preferred Alignment #3

Commonwealth Transportation Board

On behalf of the Town of Wytheville and the Wytheville Town Council, please accept this letter of support for the location and design of 'Preferred Alternate Alignment #3' for the Progress Park Connector Road.

The timing of this connector road aligns well with the expansion of industry in Progress Park, including the most recent announcement of Blue Star NBR to manufacture nitrile and gloves on Lot 24. The Town of Wytheville is a regional partner with Wythe and Bland Counties in various projects and endeavors. We view the success of Wythe County as having an incredibly positive impact on the lives and wellbeing of its citizens and the residents of surrounding counties. We support the future of industry in Progress Park and the value, safety and connectivity this project will bring.

On behalf of the Town of Wytheville, we respectfully submit this letter of support.

Sincerely

Beth A. Taylor
Mayor

BAT/sgc



County Administrator's Office

340 South Sixth Street
Wytheville VA 24382-2598
Telephone (276) 223-4500
Fax (276) 223-4515

November 24, 2021

James Jones, Project Manager
Wythe County Progress Park Connector Road
Virginia Department of Transportation
2111 Bonham Road
Bristol, VA 24201

Commonwealth Transportation Board & VDOT Staff:

Thank you for your hard work and consideration of the alternatives and impacts of the Progress Park Connector Road. Wythe County very much looks forward to the construction and completion of the project, particularly in light of the recent announcement that Blue Star NBR and Blue Star AGI will invest \$714.3 million to create 2,464 new jobs making medical gloves. The development will cover over 200 acres of Progress Park, with the first phase opening in late summer 2022 with additional phases over the next five years.

The Progress Park Connector Road is critical infrastructure to accommodate the national security and public health effort represented by Blue Star's construction and operation.

VDOT staff has presented Alternative Number 3 to the public at the most recent public input opportunity. We have not received public feedback on that alternative, but realize some property owners have concerns about remainder parcels and access from their property to the new road.

The Wythe County Board of Supervisors considered the alternative at its November 23 meeting, and asked that I convey Wythe County's support of Alternative 3. As right-of-way acquisition proceeds, I ask that you give due consideration to the property impacts but realize that speed of development is our primary consideration.

Please feel free to reach out to me or my staff with any questions you may have regarding this project or the continued economic development that depends on it.

Sincerely,

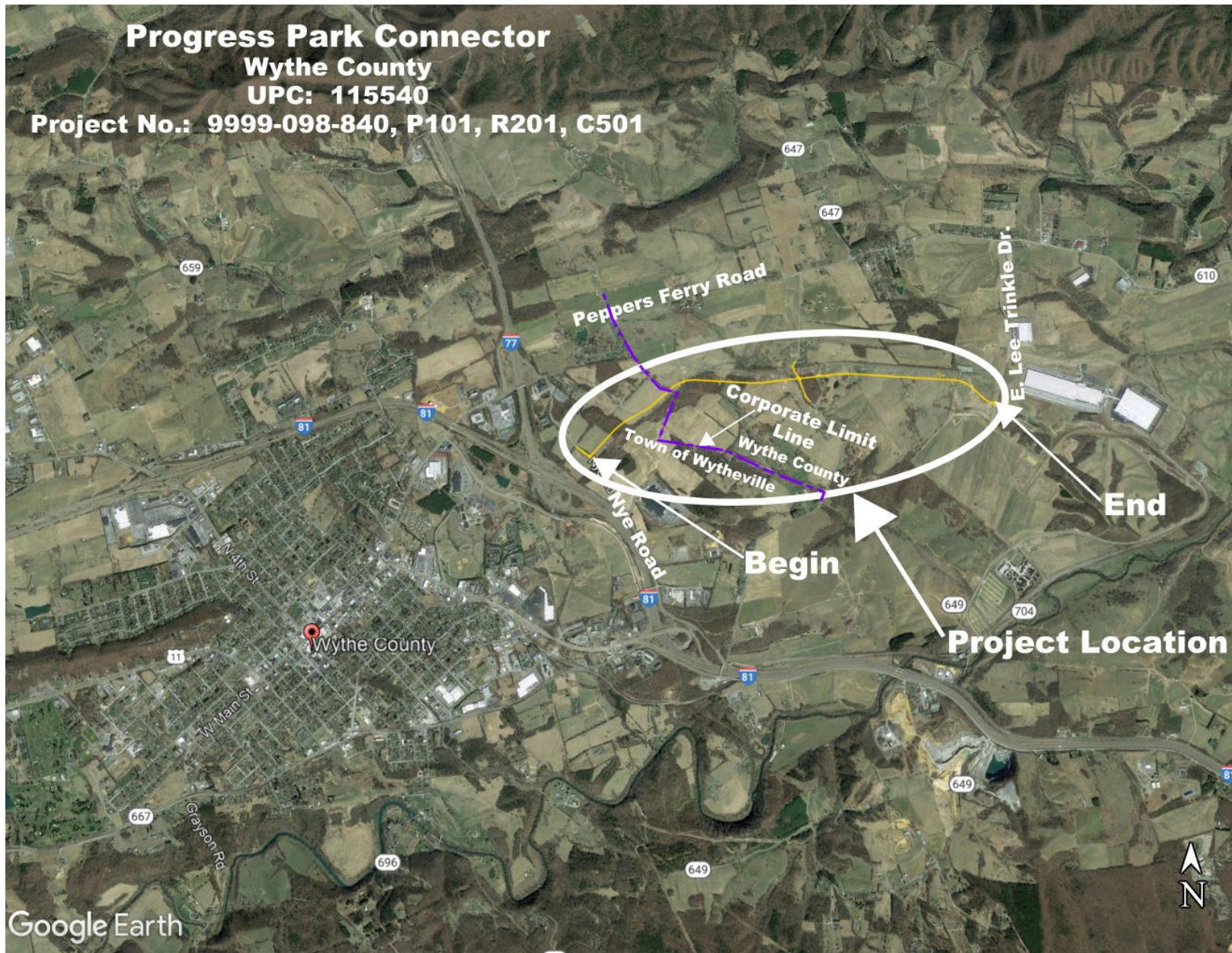
Stephen D. Bear
County Administrator

Progress Park Connector

Wythe County

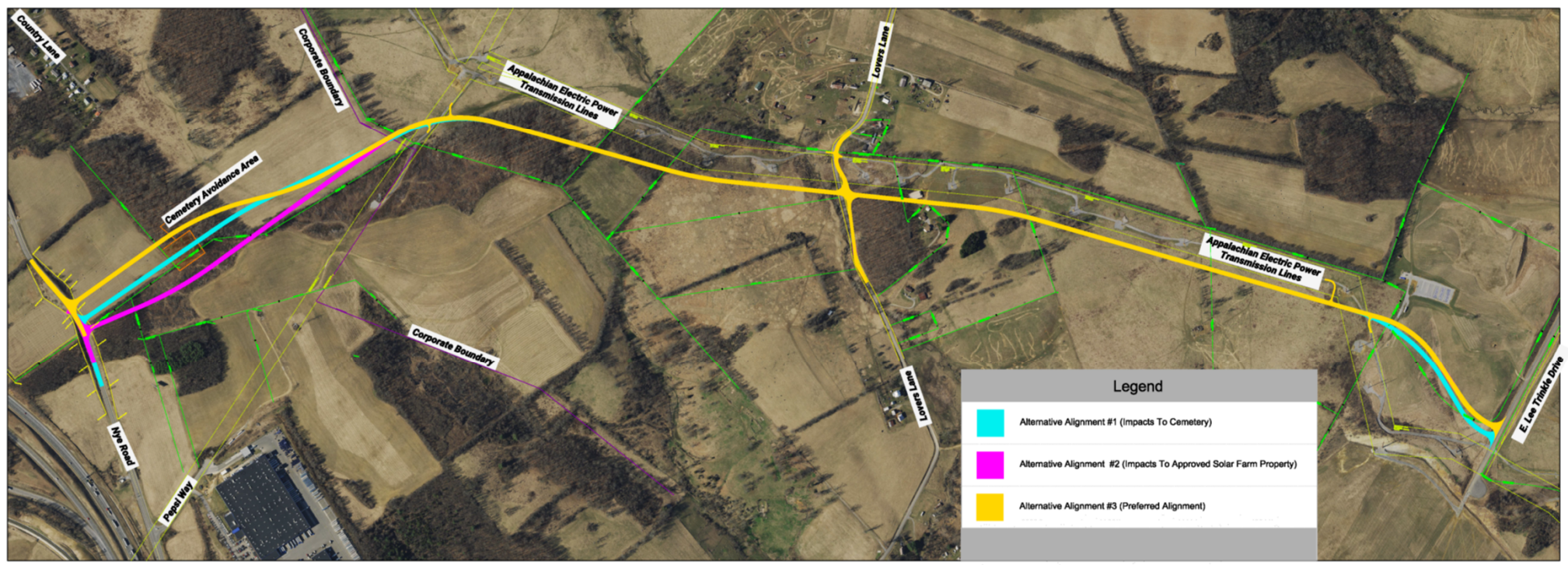
UPC: 115540

Project No.: 9999-098-840, P101, R201, C501



Google Earth

Project Overview – Proposed Conditions – Alternative Alignments



The exhibit illustrates three (3) proposed alternative alignments for the new roadway from Nye Road to E. Lee Trinkle Drive. Proposed improvements include improvements to Nye Road at the intersection, and a new intersection at Lovers Lane with improvements to Lovers Lane.