



COMMONWEALTH of VIRGINIA

Commonwealth Transportation Board

W. Sheppard Miller, III
Chairperson

1401 East Broad Street
Richmond, Virginia 23219

(804) 482-5818
Fax: (804) 786-2940

Agenda item # 5

RESOLUTION OF THE COMMONWEALTH TRANSPORTATION BOARD

October 22, 2024

MOTION

Made By: Mr. Davis, **Seconded By:** Dr. Smoot

Action: Motion Carried, Unanimously

Title: Limited Access Control Changes (LACCs) for the I-64 and Ashland Road Park and Ride (Hickory Haven) Upgrade and Relocation

WHEREAS, on October 04, 1956, the State Highway Commission, predecessor to the Commonwealth Transportation Board (CTB), designated Route 64, to be Limited Access Highways in accordance with then Article 3, Chapter 1, Title 33 of the *Code of Virginia* of 1950, as amended, and established the limited access line locations and limits as “the final locations of said routes, including all necessary grade separations, interchanges, ramps, etc.”; and

WHEREAS, on September 20, 1962, the State Highway Commission approved State Highway Project 0064-037-101 and provided an extension of Route 64 from 0.43 miles west of the intersection with Route 617 (near Oilville) to the Henrico-Goochland County Line in Goochland County; and

WHEREAS, the relocation and upgrade of a park and ride facility with a new commercial entrance on Route 623 (Ashland Road) (the “Project”) requires the limited access line on the eastbound side of the Interstate Route 64 to be relocated at Ashland Road as shown on the Limited Access Line Exhibits and the Limited Access Control Point Stations and Offsets Table (attached); and

WHEREAS, Goochland County posted a Notice of Willingness to Hold a Design Public Hearing (“Willingness”) on May 27, 2024, and June 4, 2024, in *The Richmond Times Dispatch* for the proposed LACCs for the Project, including the current and proposed locations of the limited access lines, and allowed public input to be collected concerning the request; the Willingness expired on June 10, 2024, with no comments or other input from the public; and

WHEREAS, the economic, social and environmental effects of the Project have been duly examined and given proper consideration and this evidence, along with all other relevant evidence, has been carefully reviewed; and

WHEREAS, the Virginia Department of Transportation’s (VDOT’s) Richmond District Office has reviewed and approved the traffic analysis report completed in May 2020 and found that it adequately addresses the impacts from the Project and the proposed LACCs; and

WHEREAS, the Project is in compliance with National Environmental Policy Act requirements and a Categorical Exclusion was prepared under an agreement between VDOT and the Federal Highway Administration (FHWA) and approved on September 06, 2024; and

WHEREAS, the Project is located in an attainment area for all of the National Ambient Air Quality Standards (NAAQS). In accordance with 40 CFR Part 93, transportation conformity requirements are not applicable to the project since the project is not located in a nonattainment or maintenance area for any transportation-related criteria pollutant (i.e., ozone, particulate matter, nitrogen dioxide, and carbon monoxide). The following VDEQ air pollution regulations must be adhered to during the construction of this project: 9 VAC 5-130, Open Burning restrictions; and 9 VAC 5-50, Article 1, Fugitive Dust precautions. Date of review 4/29/24; and

WHEREAS, the Project is in Goochland County and the design features and proposed LACCs are supported by a letter from the County Administrator dated June 18, 2024; and

WHEREAS, The FHWA has provided approval for State Highway Project 0064-037-800, C501, P101, R201 (UPC 120441) and the proposed LACCs in a letter dated September 10, 2024

WHEREAS, VDOT’s Chief Engineer has determined that the proposed LACCs will not adversely affect the safety or operation of the highways; and

WHEREAS, VDOT has reviewed the requested LACCs and determined that all are in compliance with § 33.2-401 of the *Code of Virginia* and that the requirements of 24 VAC 30-401-20 have been met; and

Resolution of the Board
Proposed Limited Access Control Change
I-64 and Ashland Road Park and Ride (Hickory Haven) Upgrade and Relocation
Goochland County
October 22, 2024
Page 3 of 3

WHEREAS, VDOT recommends approval of the LACCs as shown on the Limited Access Line Exhibits and the Limited Access Control Point Stations and Offsets Table (attached).

NOW, THEREFORE, BE IT RESOLVED, in accordance with § 33.2-401 of the Code of Virginia and 24 VAC 30-401-10 *et seq.*, that the CTB hereby finds and concurs in the determinations and recommendations of the VDOT made herein, and directs that I-64 continue to be designated as a limited access control area, with the boundaries of limited access control being modified from the current locations as shown on the attached exhibits.

BE IT FURTHER RESOLVED, the Commissioner of Highways is authorized to take all actions and execute any and all documents necessary to implement the LACCs described herein.

#####

Commonwealth Transportation Board (CTB) Decision Brief

Limited Access Control Changes (LACCs) for the I-64 and Ashland Road Park and Ride (Hickory Haven) Upgrade and Relocation Project 0064-037-800, P101, R201, C501 UPC# 120441

Issues: The area designated as limited access previously approved for I-64 needs to be modified to accommodate the upgrade and relocation of a park and ride with a new commercial entrance onto Route 623. These changes require the approval of the Commonwealth Transportation Board (CTB) pursuant to § 33.2-401 of the *Code of Virginia*, and 24 VAC 30-401-10 *et seq.*

Facts:

- On October 04, 1956, Limited Access Control was established by the CTB for I-64 in accordance with then Article 3, Chapter 1, Title 33 of the *Code of Virginia* of 1950, as amended, and established the limited access line locations and limits as “the final locations of said routes, including all necessary grade separations, interchanges, ramps, etc.”
- On September 20, 1962, the CTB approved State Highway Project 0064-037-101, P101, R201, C501 and provided an extension of Route 64 from 0.43 miles west intersection Route 617 (near Oilville) to the Henrico-Goochland County Line in Goochland County.
- The relocation and upgrade of the park and ride facility with a new commercial entrance onto Route 623 [. . . expand on description of project in its definition here] (the “Project”).
- The construction of the Project will impact the existing limited access control lines, as shown on the Limited Access Line Exhibit and the Limited Access Control Point Stations and Offset Table (attached).
- A Notice of Willingness for Public Comment (“Willingness”) was posted on May 27, 2024, and June 4, 2024, in the *Richmond Times-Dispatch* for the proposed LACCs for the Project, including the current and proposed locations of the limited access lines, and allowed public input to be collected concerning the request; the Willingness expired on June 10, 2024, with no comments or other input from the public.
- The economic, social, and environmental effects of the proposed Project have been duly examined and given proper consideration, and this evidence, along with all other relevant evidence has been carefully reviewed.
- The Richmond District Office has reviewed and approved the traffic analysis report completed in June 2024 and found that it adequately addresses the impacts from the Project and the proposed LACCs.

Decision Brief

Proposed Limited Access Control Changes

I-64 and Ashland Road Park and Ride (Hickory Haven) Upgrade and Relocation

County of Goochland

October 22, 2024

Page 2 of 3

- The proposed Project is in compliance with National Environmental Policy Act requirements and a Categorical Exclusion was prepared under an agreement between the Virginia Department of Transportation (VDOT) and the Federal Highway Administration and approved on September 06, 2024
- The construction of the park and ride with a new commercial entrance onto Route 623 improvements (The “Project”) will impact the existing limited access control lines, as shown on the Limited Access Line Exhibits and the Limited Access Control Point Stations and Offsets Table (attached).
- This Project is located in an area that is currently in attainment with all of the National Ambient Air Quality Standards and, in accordance with 40 CFR Part 93, transportation conformity requirements are not applicable since the Project is not located in a nonattainment or maintenance area for any transportation-related criteria pollutant (i.e., ozone, particulate matter, nitrogen dioxide, and carbon monoxide). The following VDEQ air pollution regulations must be adhered to during the construction of this project: 9 VAC 5-130, Open Burning restrictions; and 9 VAC 5-50, Article 1, Fugitive Dust precautions. Date of review 4/29/24.
- The Project is in Goochland County and the design features and proposed LACCs are supported by a letter from the County Administrator dated June 18, 2024.
- The FHWA has provided approval for State Highway Project 0064-037-800, C501, P101, R201 (UPC 120441) and the proposed LACCs in a letter dated September 10, 2024.
- VDOT’s Chief Engineer has determined that the proposed LACCs will not adversely affect the safety or operation of the highways.
- The proposed LACCs are in compliance with § 33.2-401 of the *Code of Virginia* and with the policies and requirements of the CTB contained in 24 VAC 30-401-10 *et seq.*

Recommendations: VDOT recommends, pursuant to §33.2-401 of the *Code of Virginia* and 24 VAC 30-401-10 *et seq.*, that I-64 continue to be designated as limited access with the LACCs modified and/or established as shown on the attached exhibits. This action will modify the limited access line and right of way previously approved by the CTB on September 20, 1962.

Action Required by CTB: The *Code of Virginia* § 33.2-401 and 24 VAC 30-401-10 *et seq.* require a majority vote of the CTB to approve the recommended LACCs. The CTB will be presented with a resolution for a formal vote to approve the LACCs for the proposed Project and to provide the Commissioner of Highways the requisite authority to execute all documents necessary to implement the LACCs.

Decision Brief
Proposed Limited Access Control Changes
I-64 and Ashland Road Park and Ride (Hickory Haven) Upgrade and Relocation
County of Goochland
October 22, 2024
Page 3 of 3

Result, if Approved: The Commissioner of Highways will be authorized to execute any and all documents needed to comply with the resolution, and the Hickory Haven Park and Ride Project will move forward.

Options: Approve, Deny, or Defer.

Public Comments/Reactions: There were no comments or other input received from the public as a result of the posting of the Willingness for the Project.



COMMONWEALTH of VIRGINIA

DEPARTMENT OF TRANSPORTATION

Stephen C. Brich, P.E.
Commissioner

1401 East Broad Street
Richmond, Virginia 23219

(804) 786-2701
Fax: (804) 786-2940

October 1, 2024

The Honorable W. Sheppard Miller, III
The Honorable E. Scott Kasprovicz
The Honorable Raymond D. Smoot Jr.
The Honorable Frederick C. Stant III
The Honorable Tom Fowlkes
The Honorable Burwell Wayne Coleman
The Honorable H. Randolph Laird
The Honorable Thomas Moore Lawson
The Honorable Darrell R. Byers
The Honorable Laura A. Sellers
The Honorable Joel "Rex" Davis
The Honorable Linda Green
The Honorable D.J. Gribbin
The Honorable Becky Norton Dunlop
The Honorable John P. Good, Jr.
The Honorable Stephen C. Brich, P. E.
The Honorable Zach Trogdon

Subject: Approval of Limited Access Control Changes (LACCs) for new Park & Ride lot at Hickory Haven at I-64 & Rte 623/Ashland Rd. in Goochland County.

Dear Commonwealth Transportation Board Members:

The Department has initiated the above request for LACCs for your consideration. The proposed LACCs on State Highway Project 0064-037-800,C501, P101, R201 have been determined as a necessary design feature and recommended for approval by the Department's staff.

I have reviewed the staff's recommendations and determined that approving these LACC's will not adversely affect the safety or operations of the affected highway network. I have determined that this request should be considered by the Board.

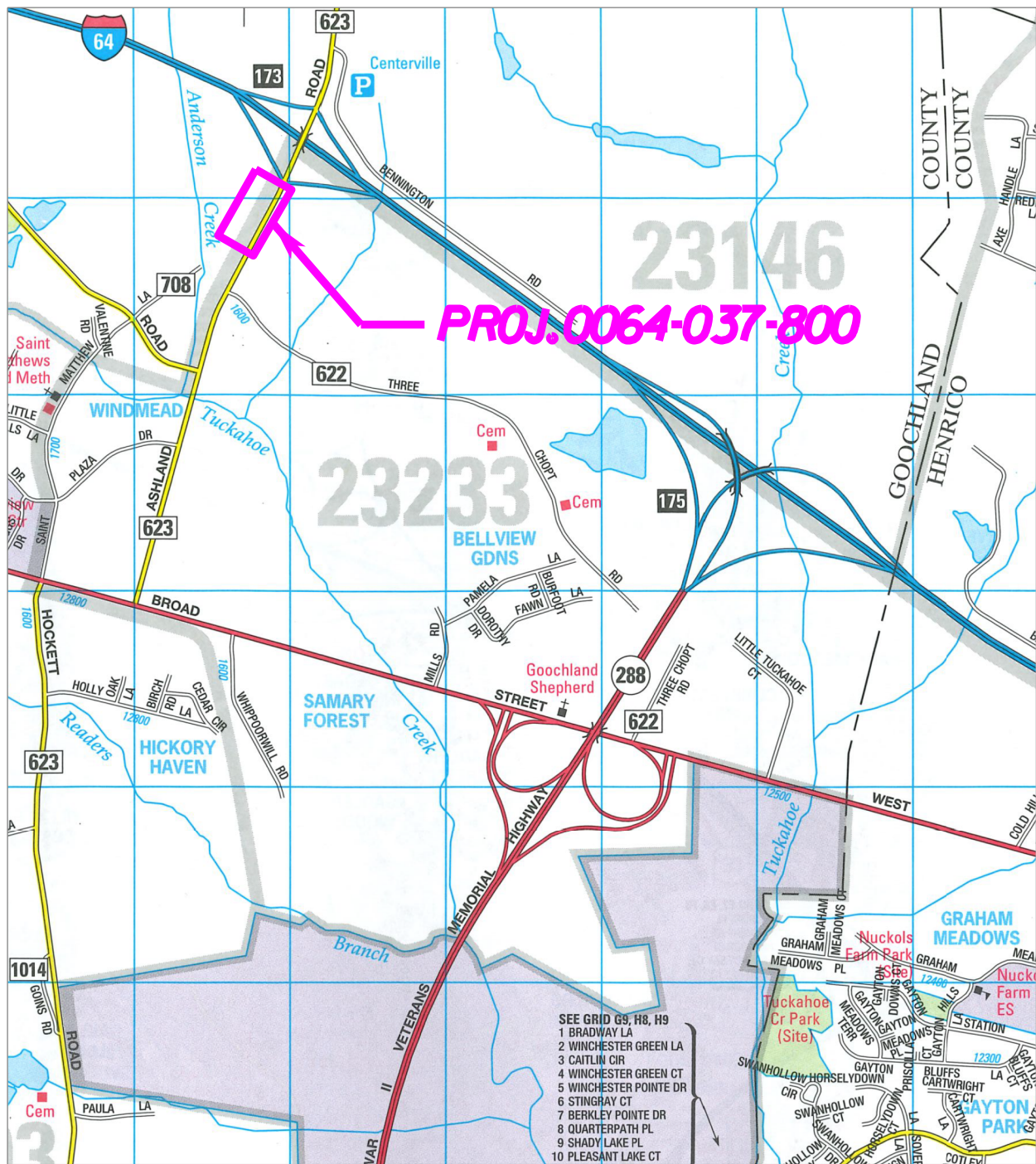
Sincerely,

Bart Thrasher
Barton A. Thrasher, P.E.
Chief Engineer

Sheet Reference	Line ID	Baseline Reference	Station	Offset	LT RT
1	Prop. L/A Line	Route 623	49+88.79	71.35'	LT
	Prop. L/A Line	Route 623	55+98.67	78.71'	LT
	Prop. L/A Line	Route 623	56+82.17	124.04'	LT

LOCATION MAP

COUNTY OF GOOCHLAND



Copyright KAPPA Map Group
Permitted Use Number BJE0713

SCALE

0 1000' 2000'

BOARD OF SUPERVISORS

Jonathan Christy, District 1
Neil Spoonhower, District 2
Tom Winfree, Vice-Chair, District 3
Charlie Vaughters, Chair, District 4
Jonathan Lyle, District 5



Victor Carpenter
County Administrator

Josh Gillespie
Deputy County Administrator

www.goochlandva.us

June 18, 2024

Re: UPC 120441 - Hickory Haven Park and Ride

To Whom It May Concern:

This letter serves as Goochland County's support for a revision to the Limited Access line as a part of the Hickory Haven Park and Ride project as shown in the attached exhibit.

Please let us know if there is anything Goochland County needs to do to complete this process.

Respectfully,

A handwritten signature in blue ink that reads "Vic Carpenter".

Victor "Vic" Carpenter
County Administrator

Cc: Deputy County Administrator, Josh Gillespie
County Engineer, Austin Goyne

MINUTES
OF
Meeting of State Highway Commission of Virginia
Richmond, Virginia
September 20, 1962

The State Highway Commission of Virginia met at the Central Highway Office, Richmond, Virginia, at 10:00 A.M. on September 20, 1962. The Chairman, H. H. Harris, presided.

Present: Messrs. H. H. Harris, W. R. Chilton, S. S. Flythe, R. S. Holland, George C. Landrich, Burgess E. Nelson, W. M. Sclater, Jr., Tucker C. Watkins, Jr., and R. S. Weaver, Jr.

On motion of Mr. Sclater, seconded by Judge Weaver, the minutes of the meeting of August 23, 1962 were approved.

Motion was made by Mr. Sclater, seconded by Judge Weaver, that permits issued from August 23, 1962 to September 19, 1962, inclusive, as shown in records of the Department, be approved. Motion carried.

On motion of Mr. Sclater, seconded by Judge Weaver, cancellation of permits from August 23, 1962 to September 19, 1962, inclusive, as shown in records of the Department, was approved.

Mr. A. B. Eure, Fiscal Director of the Department of Highways, presented and explained the attached "Analysis of Revenue, Appropriations and Deficits and Distribution of Unappropriated Surplus at June 30, 1962", and on motion of Judge Weaver, seconded by Senator Nelson, the Commission approved the recommended distribution of balance as shown on Page 2 of the aforesaid attachment.

Moved by Senator Nelson, Seconded by Mr. Holland, that,
Whereas, in connection with the reconstruction of Route
58, at South Boston, Virginia in Halifax County, the Commonwealth
did acquire certain lands for the relocation of Route 58; and
Whereas, the route was actually constructed in another
location and the said parcels of land are now not needed for highway
purposes; and

Whereas, certain individuals are desirous of having this
land reconveyed to them or new owners are interested in the purchase
of the several parcels; and

Whereas, the State Highway Commissioner has certified in
writing that said parcels of land are no longer necessary for the
State Highway system;

Now, therefore, be it resolved, that, in accordance with
the provisions of Section 33-76.6 of the 1950 Code of Virginia, as
amended, the return of the said parcels of land to private ownership
and to the local tax rolls, in such a manner and for such considera-
tion as the State Highway Commissioner may deem in the best interest
of the Commonwealth, is hereby approved, and the State Highway
Commissioner is hereby authorized to execute deeds without warranty
for same accordingly. Motion carried.

Moved by Judge Weaver, Seconded by Mr. Sclater, that,
Whereas, in accordance with the provisions of Section 128
of Title 23- Highways, United States Code, a Public Hearing was held
in the Auditorium of the Goochland Elementary School, Goochland,
Virginia at 10:00 A.M., on August 15, 1962, concerning the proposed
construction of Route 64 from 0.43 miles west intersection Route
617 (near Oilville) to Henrico-Goochland County Line in Goochland
County, State Project 0064-037-101, Federal Project I-64-2-(1) 53.

Whereas, proper notice was given in advance and all those
present were given a full opportunity to express their opinions and
recommendations for or against the proposed development as planned
and their statements being duly recorded, and

Whereas, the economic effects of the proposed relocation
have been examined and given proper consideration, and this evidence
along with all other, has been carefully reviewed, now therefore,

Be it resolved, that the construction of this project be
approved in accordance with the general plan as proposed and present-
ed by the Engineering Division of the Department of Highways along
Line A.

This section of Interstate Route 64 follows to the north
of, and generally parallel to existing Route 250, varying from 0.3
mile to 1.0 mile. Motion Carried

Koscinski, Jr., Joseph P., P.E. (VDOT)

From: Snider, Lori A. (VDOT)
Sent: Wednesday, August 7, 2024 12:22 PM
To: Leckner, Kimberly M. (VDOT)
Cc: Koscinski, Jr., Joseph P., P.E. (VDOT)
Subject: Re: Limited Access Control Change for UPC 120441 - Park & Ride lot at Hickory Haven at I-64 & Rte 623/Ashland Rd. Richmond District

I approve this LACC from a Right of Way and Utilities perspective.

Thank you,
Lori



Lori A. Snider

State Right of Way & Utilities Director / Right of Way & Utilities Division

Virginia Department of Transportation
804-786-5841 office / 434-907-4915 cell

Lori.Snider@VDOT.Virginia.gov

From: Leckner, Kimberly M. (VDOT) <Kimberly.Leckner@VDOT.Virginia.gov>
Sent: Wednesday, August 7, 2024 12:02 PM
To: Snider, Lori A. (VDOT) <Lori.Snider@VDOT.Virginia.gov>
Cc: Koscinski, Jr., Joseph P., P.E. (VDOT) <Joseph.Koscinski@VDOT.Virginia.gov>
Subject: Fw: Limited Access Control Change for UPC 120441 - Park & Ride lot at Hickory Haven at I-64 & Rte 623/Ashland Rd. Richmond District

Lori,

I have received and reviewed the attached project related LACC request from L&D. I recommend your approval from a Right of Way and Utilities perspective. If you concur, please indicate your approval with a response to Joe, who is cc'd. Thank you



Kimberly Leckner

Program Manager / Right of Way and Utilities Division

Virginia Department of Transportation

(o) (804) 786-4079

(c) (703) 853-5619

Kimberly.Leckner@VDOT.Virginia.gov

Hickory Haven Park and Ride Lot Relocation in Goochland County

Willingness to hold a public hearing

Find out about the proposed plans to relocate the Hickory Haven Park and Ride lot. This project will construct a new park and ride lot in the southwest quadrant of Interstate 64 (I-64) at Exit 173 along Ashland Road (Route 623). The parking lot improvements consist of constructing a 207-space park and ride facility on approximately 3.8 acres in Goochland County. In addition to the parking lot design, the project includes design of a southbound exclusive right turn lane (200' taper / 200' storage) long Ashland Road and a 300 linear foot long access road providing ingress and egress to the Park and Ride lot. Additional improvements include storm sewer, stormwater management (SWM), pavement markings, signage, and a 6' wide paved shoulder. This paved shoulder does not preclude bicyclists along Ashland Road. Within the park and ride lot, a concrete landing consisting of bike racks and a bench will be provided to accommodate bicycles and pedestrians. This project will involve a change and/or break in limited access control.

Review project information and National Environmental Policy Act (NEPA) documentation at VDOT's Richmond District Office located at 2430 Pine Forest Drive, South Chesterfield, VA, 23834, 804-524-6000, TTY/TDD 711. Please call ahead to ensure the availability of appropriate personnel to answer your questions.

If your concerns cannot be satisfied, VDOT is willing to hold a public hearing. You may request that a public hearing be held by sending a written request to **Vincent Stewart**, Virginia Department of Transportation, 2430 Pine Forest Drive, Colonial Heights, VA 23834-9002 or Vincent.Stewart@VDOT.Virginia.gov on or prior to Monday, June 10, 2024. If a request for a public hearing is received, notice of date, time and place of the hearing will be posted.

VDOT ensures nondiscrimination and equal employment in all programs and activities in accordance with Title VI and Title VII of the Civil Rights Act of 1964. If you have questions or concerns about your civil rights in regard to this project or special assistance for persons with disabilities or limited English proficiency, contact the project manager listed above.

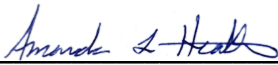
Documentation of FHWA Review

Project Name: I64 EW Hickory Haven P&R Lot project

State Project Number: 0064-037-800

UPC: 120441

Based on preliminary environmental impact information compiled by VDOT, FHWA approved this project as a Categorical Exclusion on September 6, 2024. Based on my review of the Categorical Exclusion documentation submitted by VDOT, I find this information acceptable and sufficient as supporting documentation to support the original Categorical Exclusion determination.



Approving FHWA Official

September 6, 2024

Date

FOR INDEX OF SHEETS SEE SHEET 1A



FHWA-534 DATA 4101

STATE	FEDERAL AID PROJECT	ROUTE	STATE PROJECT	SHEET NO.
VA	(SEE TABULATION BELOW FOR SECTION NUMBERS) STP-BR04(340) NHPP-BR04(310)	64	0064-037-800 (INFO) (SEE TABULATION BELOW FOR SECTION NUMBERS)	1

THIS PROJECT WAS DEVELOPED UTILIZING THE DEPARTMENT'S ENGINEERING DESIGN PACKAGE (OpenRoads Designer), COMPUTER IDENTIFICATION NO 120441.

COMMONWEALTH OF VIRGINIA
DEPARTMENT OF TRANSPORTATION

PLAN AND PROFILE OF PROPOSED
STATE HIGHWAY

GOOCHLAND COUNTY
FROM: 0.192 MI. SOUTH OF I-64 EB OFF-RAMP
TO: 0.014 MI. NORTH OF I-64 EB OFF-RAMP

FUNCTIONAL CLASSIFICATION AND TRAFFIC DATA		
	ROUTE 623 (ASHLAND ROAD)	ACCESS ROAD
FROM:	0.192 MI. SOUTH OF I-64 EB OFF-RAMP	0.192 MI. SOUTH OF I-64 EB OFF-RAMP
TO:	0.014 MI. NORTH OF I-64 EB OFF-RAMP	0.014 MI. NORTH OF I-64 EB OFF-RAMP
FUNCTIONAL CLASSIFICATION	RURAL MINOR ARTERIAL	RURAL LOCAL
ADT (2021)	11,000	-
ADT (2047)	16,000	500
DHV	1,725	100
D (%) (design hour)	57%	50%
T (%) (design hour)	24%	0%
V (MPH)	MIN. 45 MPH (TC-5.11R)	MIN. 30 MPH (TC-5.11ULS)
GEOMETRIC STD.	GS-2	GS-4

*SEE PLAN AND PROFILE SHEETS FOR HORIZONTAL CURVE AND DESIGN SPEED DATA

MAY 29, 2024

UFI PLANS

THESE PLANS ARE UNFINISHED AND UNAPPROVED AND ARE NOT TO BE USED FOR ANY TYPE OF CONSTRUCTION OR THE ACQUISITION OF RIGHT OF WAY.

ADDITIONAL EASEMENTS FOR UTILITY RELOCATIONS MAY BE REQUIRED BEYOND THE PROPOSED RIGHT-OF-WAY SHOWN ON THESE PLANS.

PROJECT MANAGER: Evan Roberts, (804) 815-4581 (Richmond District)
SURVEYED BY: DATE: David Burch, 12.03.2022
DESIGN BY: Kimber-Hora & Associates, Inc.
SUBSURFACE UTILITY BY: DATE: Accurate, Inc., 04/2022

CONVENTIONAL SIGNS

STATE LINE	---
COUNTY LINE	- - - -
CITY/TOWN OR VILLAGE	-----
RIGHT OF WAY LINE	=====
FENCE LINE	=====
UNFENCED PROPERTY LINE	-----
FENCED PROPERTY LINE	-----
WATER LINE	-----
SANITARY SEWER LINE	-----
GAS LINE	-----
ELECTRIC UNDERGROUND CABLE	-----
TRAVELER WAY	-----
GUARD RAIL	-----
RETAINING WALL	-----
RAILROADS	-----
BARB OR SURVEY LINE	-----
LEVY OR EMBANKMENT	-----
BRIDGES	-----
CULVERTS	-----
DROP INLET	-----
POWER POLES	-----
TELEPHONE OR TELEGRAPH POLES	-----
TELEPHONE OR TELEGRAPH LINES	-----
HEADS	-----
TREES	-----
HEAVY WOODS	-----
GROUND ELEVATION	-----
GRADE ELEVATION	-----

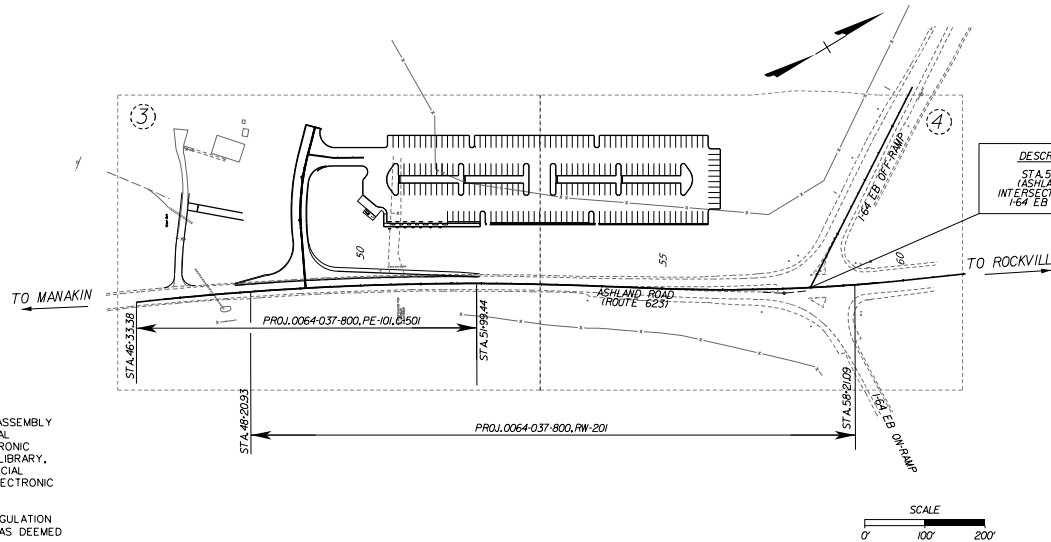
THE COMPLETE ELECTRONIC PDF VERSION OF THE PLAN ASSEMBLY AS AWARDED, HAS BEEN SEALED AND SIGNED USING DIGITAL SIGNATURES AND THE OFFICIAL PLAN ASSEMBLY IN ELECTRONIC FORMAT IS STORED IN THE VDOT CENTRAL OFFICE PLAN LIBRARY. INCLUDING ALL SUBSEQUENT REVISIONS, WILL BE THE OFFICIAL CONSTRUCTION PLANS. FOR INFORMATION RELATIVE TO ELECTRONIC FILES AND LAYERED PLANS, SEE THE GENERAL NOTES.

DESIGN FEATURES RELATING TO CONSTRUCTION OR TO REGULATION AND CONTROL OF TRAFFIC MAY BE SUBJECT TO CHANGE AS DEEMED NECESSARY BY THE DEPARTMENT.

THIS PROJECT IS TO BE CONSTRUCTED IN ACCORDANCE WITH THE DEPARTMENT'S 2020 ROAD AND BRIDGE SPECIFICATIONS, 2016 ROAD AND BRIDGE STANDARDS, 2009 MUTCD, 2011 VIRGINIA SUPPLEMENT TO THE MUTCD, 2011 VIRGINIA WORK AREA PROTECTION MANUAL REV. 2.1 AND AS AMENDED BY CONTRACT PROVISIONS AND THE COMPLETE ELECTRONIC PDF VERSION OF THE PLAN ASSEMBLY.

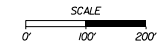
ALL CURVES ARE TO BE SUPERELEVATED, TRANSITIONED AND WIDENED IN ACCORDANCE WITH STANDARD TC-5.11R, AND TC-5.11ULS EXCEPT WHERE OTHERWISE NOTED.

THE ORIGINAL APPROVED TITLE SHEET(S), INCLUDING ORIGINAL SIGNATURES, ARE FILED IN THE VDOT CENTRAL OFFICE PLAN LIBRARY. ANY MISUSE OF ELECTRONIC FILES, INCLUDING SCANNED SIGNATURES, IS ILLEGAL AND ENFORCED TO THE FULL EXTENT OF THE LAW.



DESCRIPTION REFERENCE
STA. 57+45.24 ROUTE 623
ASHLAND ROAD CONSTR. @
INTERSECTION WITH STA. 00+00.00
I-64 EB OFF-RAMP CONSTR. @

TIER 1 PROJECT	
RECOMMENDED FOR APPROVAL FOR RIGHT OF WAY ACQUISITION	
DATE	DISTRICT PLANNING AND INVESTMENT MANAGER
DATE	DISTRICT PROJECT DEVELOPMENT ENGINEER
APPROVED FOR RIGHT OF WAY ACQUISITION	
DATE	DISTRICT ENGINEER/ADMINISTRATOR



Goochland County Population 24727 (2020 Census)

STATE PROJECT NO.	SECTION	FEDERAL AID PROJECT NO.	TYPE CODE	UPC NO.	EQUALITIES		LENGTH INCLUDING BRIDGE(S)		LENGTH EXCLUDING BRIDGE(S)		BRIDGE PROJECT NO.	TYPE PROJECT	DESCRIPTION
					FEET	MILES	FEET	MILES	FEET	MILES			
0064-037-800	C-501	STP-BR04(340)	1000	120441	566.07	0.107	566.07	0.107			Const.	FROM: 0.211 MI. SOUTH OF I-64 EB OFF-RAMP TO: 0.103 MI. SOUTH OF I-64 EB OFF-RAMP	
	PE-101	NHPP-BR04(310)	PENG	120441	566.07	0.107	566.07	0.107			Prel. Engr.	FROM: 0.211 MI. SOUTH OF I-64 EB OFF-RAMP TO: 0.103 MI. SOUTH OF I-64 EB OFF-RAMP	
	RW-201		ROWA	120441	999.16	0.189	999.16	0.189			R/W	FROM: 0.175 MI. SOUTH OF I-64 EB OFF-RAMP TO: 0.014 MI. NORTH OF I-64 EB OFF-RAMP	

Project Lengths are based on Route 623 Construction Baseline.

RECOMMENDED FOR APPROVAL FOR CONSTRUCTION	
DATE	DISTRICT PLANNING AND INVESTMENT MANAGER
DATE	DISTRICT PROJECT DEVELOPMENT ENGINEER
APPROVED FOR CONSTRUCTION	
DATE	DISTRICT ENGINEER/ADMINISTRATOR

Copyright 2022, Commonwealth of Virginia

PROJECT MANAGER: Evan Roberts, 8104-B-4581 (Richmond, District)
SURVEYED BY: DATE: David, Burck, L.S. 03/2022
DESIGN BY: Kinley-Horn & Associates, Inc.
SUBSURFACE UTILITY BY: DATE: accurate, Inc. 04/2022

WATER & SEWER
GoChand Co. Water & Sewer
Matt Longshore, P.E., Director of Public Utilities
1800 Sandy Hook Road
GoChand, VA 23063
OFFICE: 804-556-5835
mattlongshore@gochandva.com

UTILITY OWNERS
POWER
Dominion Virginia Power
7500 West Broad Street
Richmond, VA 23294
Rick McDonald
804-775-5236 (Office)
804-929-2646 (Cell)
Rick.McDonald@dominioneenergy.com

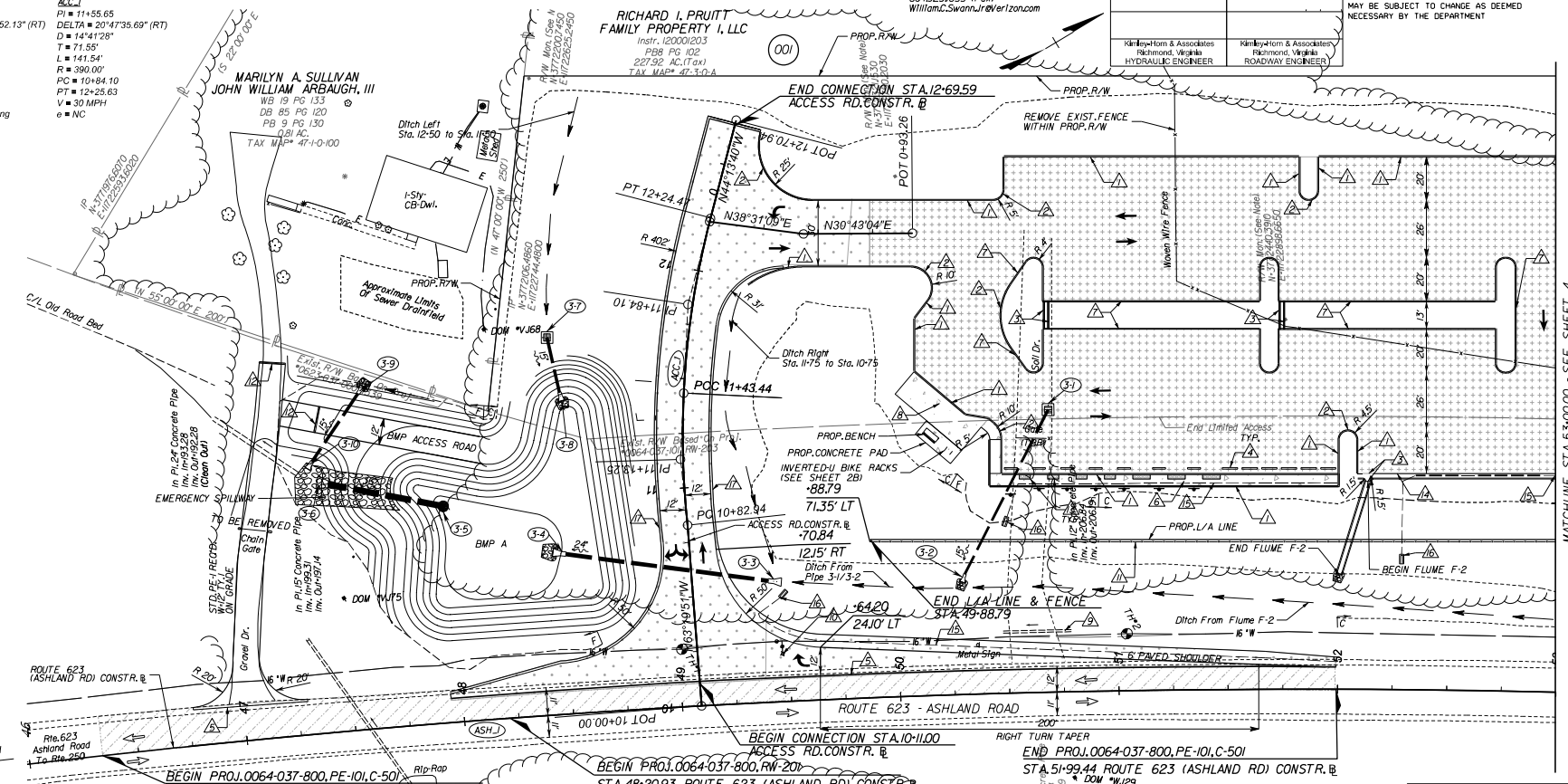
TELECOMM
Verizon Virginia LLC
William "Bill" C. Swann Jr.
Highway Relocation Department
301 Hungary Spring Road
Richmond, VA 23228-2429
804-923-5554 (Office)
804-514-0567 (Cell)
804-923-1825 (Fax)
William.C.Swann.Jr@verizon.com

REVISED	STATE	ROUTE	STATE PROJECT	SHEET NO.
	VA	623	0064-037-800-PE-101 RW-201 C-501	3

DESIGN FEATURES RELATING TO CONSTRUCTION OR TO REGULATION AND CONTROL OF TRAFFIC MAY BE SUBJECT TO CHANGE AS DEEMED NECESSARY BY THE DEPARTMENT

ASH J
PI = 45+69.78
DELTA = 19°26'52.13" (RT)
D = 01°00'00"
T = 816.52'
L = 1618.65'
R = 4,982.23'
PC = 37+45.26
PT = 53+71.91
V = 35 MPH
e = Match Existing

ACC J
PI = 11+55.65
DELTA = 20°47'35.69" (RT)
D = 14°41'28"
T = 71.55'
L = 141.54'
R = 390.00'
PC = 10+94.10
PT = 12+25.63
V = 30 MPH
o = NC



REFERENCES
(PROFILES, DETAIL & DRAINAGE DESCRIPTION SHEETS, ETC.)

Survey Alignment Data	1D
Constr. Alignment Data	1F(1-2)
BMP A Detail Sheets	2C(1-2)
Roadway Profile	3A
E&S Phase 1 Plan	3B
E&S Phase 2 Plan	3C
Right of Way Sheet	3RW
Drainage Descriptions	6(1)
Storm Sewer Profiles	6(2)
Signing and Marking Plan	7(3)

LEGEND

[Symbol]	PROPOSED PAVEMENT	[Symbol]	ST'D. CG-2 REQ'D.
[Symbol]	PROPOSED PARK AND RIDE LOT PAVEMENT (SEE SHEET 2B)	[Symbol]	ST'D. RADIAL CG-2 REQ'D.
[Symbol]	MILL/OVERLAY/BUILD UP PAVEMENT	[Symbol]	3 CURB CUT (SEE SHEET 2B)
[Symbol]	PROPOSED CONC. ITEMS	[Symbol]	NS WHEEL STOPS (SEE SHEET 2B)
[Symbol]	PROPOSED DETECTABLE WARNING SURFACE	[Symbol]	NS FULL DEPTH ASPHALT SAWCUT
[Symbol]	DENOTES CONSTRUCTION LIMITS IN CUTS	[Symbol]	HYDR. CONC. SIDEWALK REQ'D. (WIDTH - 5')
[Symbol]	DENOTES CONSTRUCTION LIMITS IN FILLS	[Symbol]	ST'D. MS-2 REQ'D.
[Symbol]		[Symbol]	HYDR. CONC. SIDEWALK REQ'D. (WIDTH - 10' MIN)
[Symbol]		[Symbol]	ST'D. UD-4 REQ'D.
[Symbol]		[Symbol]	EXIST. PIPE TO BE REMOVED
[Symbol]		[Symbol]	EXIST. UTILITY TO BE RELOCATED
[Symbol]		[Symbol]	PAVED SHOULDER

NOTE: DOT-DOT-DASHED LINES DENOTE TEMPORARY EASEMENTS.
NOTE: DOT-DASHED LINES DENOTE PERMANENT EASEMENTS.

ST'D. CG-2 REQ'D.
ST'D. RADIAL CG-2 REQ'D.
3 CURB CUT (SEE SHEET 2B)
NS WHEEL STOPS (SEE SHEET 2B)
NS FULL DEPTH ASPHALT SAWCUT
HYDR. CONC. SIDEWALK REQ'D. (WIDTH - 5')
ST'D. MS-2 REQ'D.
HYDR. CONC. SIDEWALK REQ'D. (WIDTH - 10' MIN)
ST'D. UD-4 REQ'D.
EXIST. PIPE TO BE REMOVED
EXIST. UTILITY TO BE RELOCATED
PAVED SHOULDER

UFI PLANS

THESE PLANS ARE UNFINISHED AND UNAPPROVED AND ARE NOT TO BE USED FOR ANY TYPE OF CONSTRUCTION OR THE ACQUISITION OF RIGHT OF WAY.

PRELIMINARY EASEMENTS FOR UTILITY RELOCATIONS ARE APPROXIMATE ONLY AND SUBJECT TO CHANGE AS PROJECT DESIGN IS FINALIZED

SCALE 0 25 50	PROJECT 0064-037-800	SHEET NO. 3
------------------	-------------------------	----------------

MATCHLINE STA. 53+00.00 - SEE SHEET 4

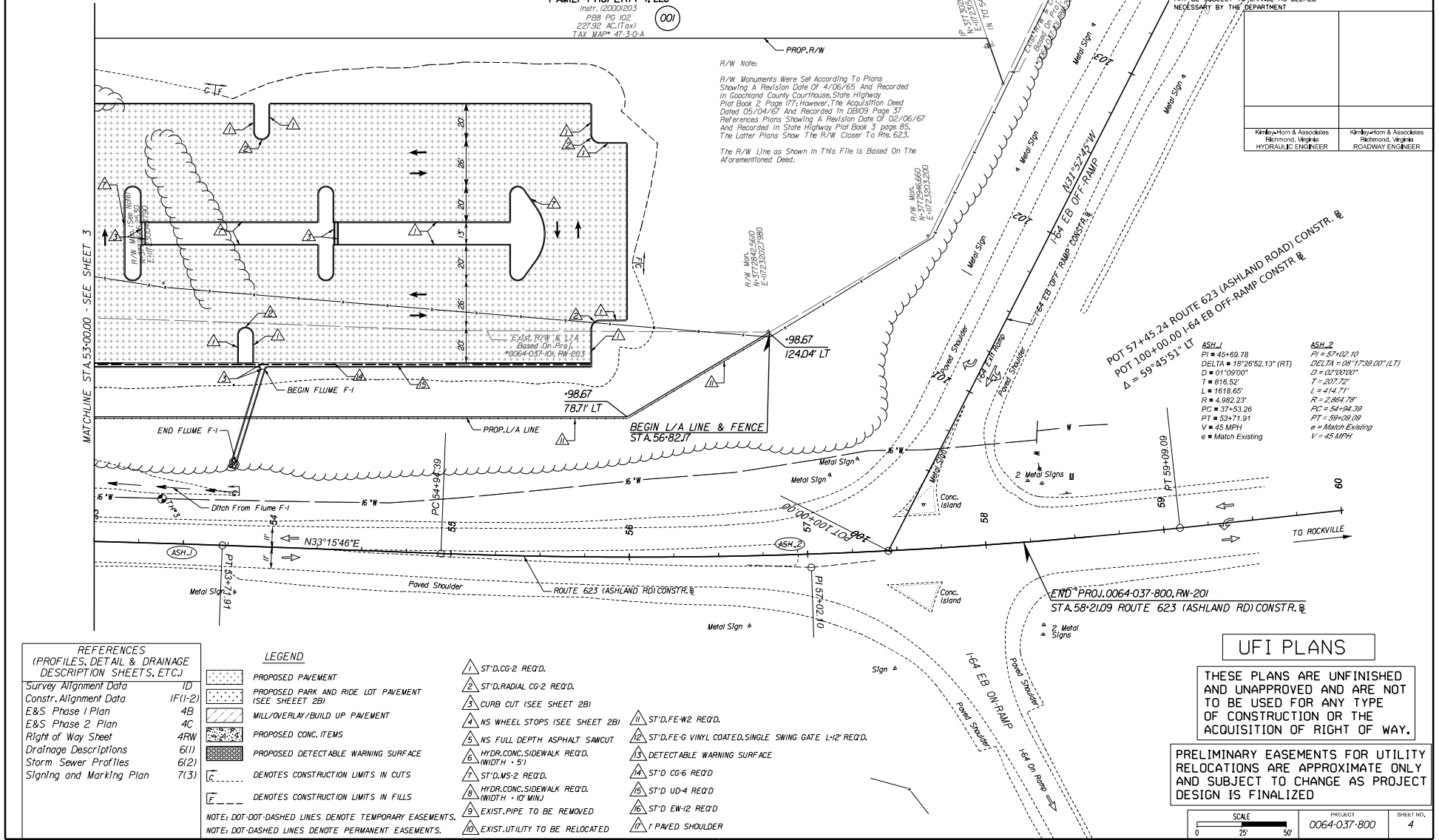
PROJECT MANAGER: Evan Roberts, 1804-BIS-4581 (Richmond, District)
SURVEYED BY: DATE David Burck, LS 03/2022
DESIGN BY: Date: J. H. H. & Associates, Inc., 06/2022
SUBSURFACE UTILITY BY: DATE: J. H. H. & Associates, Inc., 06/2022

REVISED	STATE	ROUTE	STATE PROJECT	SHEET NO.
	VA	623	0064-037-800PE-101 RW-201 C-501	4

DESIGN FEATURES RELATING TO CONSTRUCTION OR TO REGULATION AND CONTROL OF TRAFFIC MAY BE SUBJECT TO CHANGE AS DEEMED NECESSARY BY THE DEPARTMENT

Kinley-Horn & Associates Richmond, Virginia HYDRAULIC ENGINEER	Kinley-Horn & Associates Richmond, Virginia ROADWAY ENGINEER
----------------------------------------------------------------------	--------------------------------------------------------------------

**RICHARD I. PRUITT
FAMILY PROPERTY I, LLC**
Instr. 120001203
PBB PG 102
22752 AC-1(Tax)
TAX MAP# 47-3-0-A



ASH_1
PI = 45+69.78
DELTA = 18°26'52.13" (RT)
D = 01°09'00"
T = 616.52
L = 1618.65
R = 4,982.23'
PC = 37+53.26
PT = 53+71.91
V = 45 MPH
o = Match Existing

ASH_2
PI = 57+02.10
DELTA = 08°17'38.00" (LT)
D = 02°00'00"
T = 307.72
L = 414.71
R = 2,884.78'
PC = 54+04.39
PT = 59+08.09
o = Match Existing
V = 45 MPH

REFERENCES
(PROFILES, DETAIL & DRAINAGE DESCRIPTION SHEETS, ETC.)

Survey Alignment Data	ID
Constr. Alignment Data	IF(1-2)
E&S Phase 1 Plan	4B
E&S Phase 2 Plan	4C
Right of Way Sheet	4RW
Drainage Descriptions	6(1)
Storm Sewer Profiles	6(2)
Signing and Marking Plan	7(3)

LEGEND

[Pattern]	PROPOSED PAVEMENT	[Symbol]	ST'D. CG-2 REQ'D.
[Pattern]	PROPOSED PARK AND RIDE LOT PAVEMENT (SEE SHEET 2B)	[Symbol]	ST'D. RADIAL CG-2 REQ'D.
[Pattern]	MILL/OVERLAY/BUILD UP PAVEMENT	[Symbol]	CURB CUT (SEE SHEET 2B)
[Pattern]	PROPOSED CONC. ITEMS	[Symbol]	NS WHEEL STOPS (SEE SHEET 2B)
[Pattern]	PROPOSED DETECTABLE WARNING SURFACE	[Symbol]	NS FULL DEPTH ASPHALT SAWCUT
[Symbol]	DENOTES CONSTRUCTION LIMITS IN CUTS	[Symbol]	HYDR. CONC. SIDEWALK REQ'D. (WIDTH - 5')
[Symbol]	DENOTES CONSTRUCTION LIMITS IN FILLS	[Symbol]	ST'D. MS-2 REQ'D.
[Symbol]	NOTE: DOT-DOT-DASHED LINES DENOTE TEMPORARY EASEMENTS. NOTE: DOT-DASHED LINES DENOTE PERMANENT EASEMENTS.	[Symbol]	HYDR. CONC. SIDEWALK REQ'D. (WIDTH - 10' MIN)
[Symbol]		[Symbol]	EXIST. PIPE TO BE REMOVED
[Symbol]		[Symbol]	EXIST. UTILITY TO BE RELOCATED

[Symbol]	ST'D. FE-W2 REQ'D.
[Symbol]	ST'D. FE-G VINYL COATED, SINGLE SWING GATE L-1/2' REQ'D.
[Symbol]	DETECTABLE WARNING SURFACE
[Symbol]	ST'D. CG-6 REQ'D.
[Symbol]	ST'D. UD-4 REQ'D.
[Symbol]	ST'D. EW-12 REQ'D.
[Symbol]	1' PAVED SHOULDER

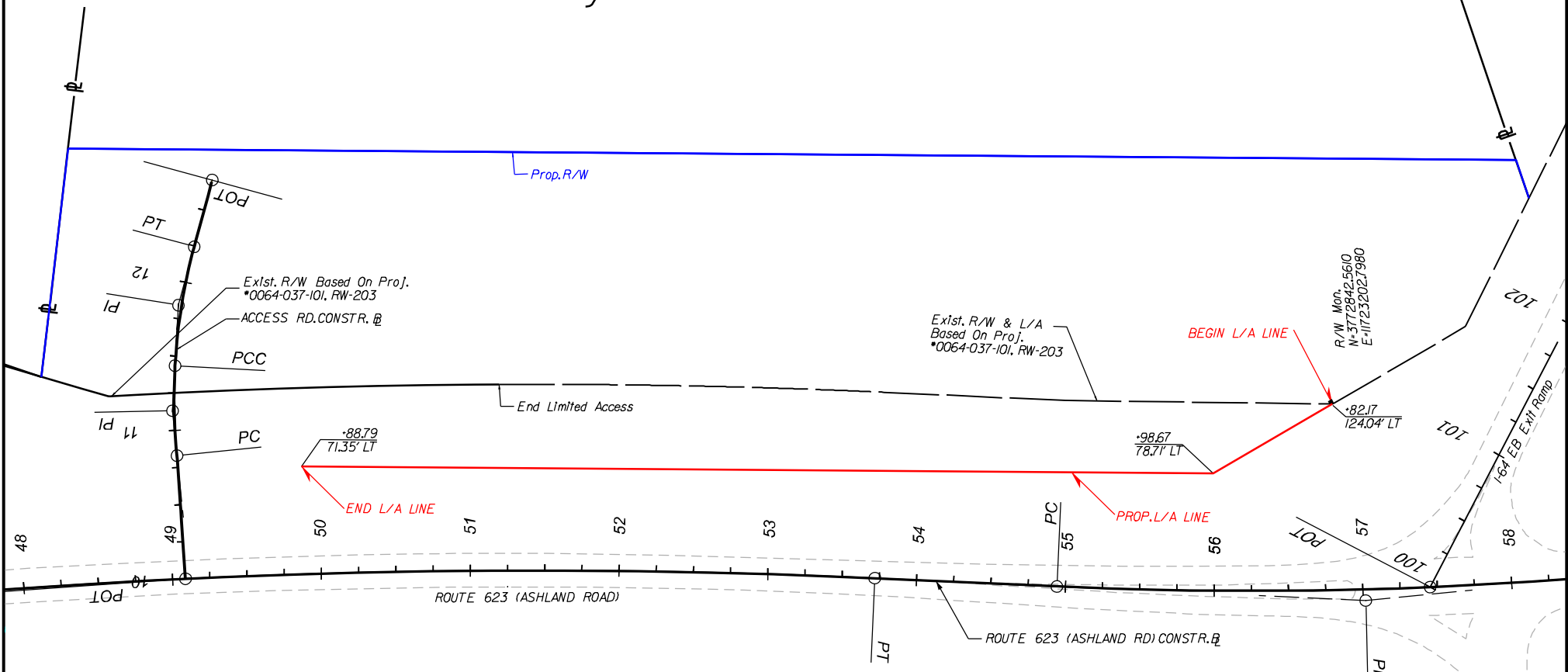
UFI PLANS

THESE PLANS ARE UNFINISHED AND UNAPPROVED AND ARE NOT TO BE USED FOR ANY TYPE OF CONSTRUCTION OR THE ACQUISITION OF RIGHT OF WAY.

PRELIMINARY EASEMENTS FOR UTILITY RELOCATIONS ARE APPROXIMATE ONLY AND SUBJECT TO CHANGE AS PROJECT DESIGN IS FINALIZED

SCALE 0 25' 50'	PROJECT 0064-037-800	SHEET NO. 4
--------------------	-------------------------	----------------

Proposed Limited Access Control Changes: I-64 Eastbound to Route 623 Southbound Hickory Haven Park And Ride



LEGEND

- Limited Access By Resolution of Commonwealth Transportation Board dated October 4, 1956
- Proposed Limited Access Modifications
- Proposed Right-of-Way
- Existing Right-of-Way
- | Existing Parcel Boundary

R/W Note:

R/W Monuments Were Set According To Plans Showing A Revision Date Of 4/06/65 And Recorded In Goochland County Courthouse, State Highway Plat Book 2 Page 177; However, The Acquisition Deed Dated 05/04/67 And Recorded In DB109 Page 37 References Plans Showing A Revision Date Of 02/06/67 And Recorded In State Highway Plat Book 3 page 85. The Latter Plans Show The R/W Closer To Rte. 623.

The R/W Line as Shown In This File Is Based On The Aforementioned Deed.

SCALE	SHEET NO.
	1