



NIMMO PARKWAY PHASE VII-B PROJECT

Location Decision Introduction

| Scott Smizik, Assistant Environmental Division Director

September 17, 2024

Presentations to CTB on Nimmo Parkway Phase VII-B EIS



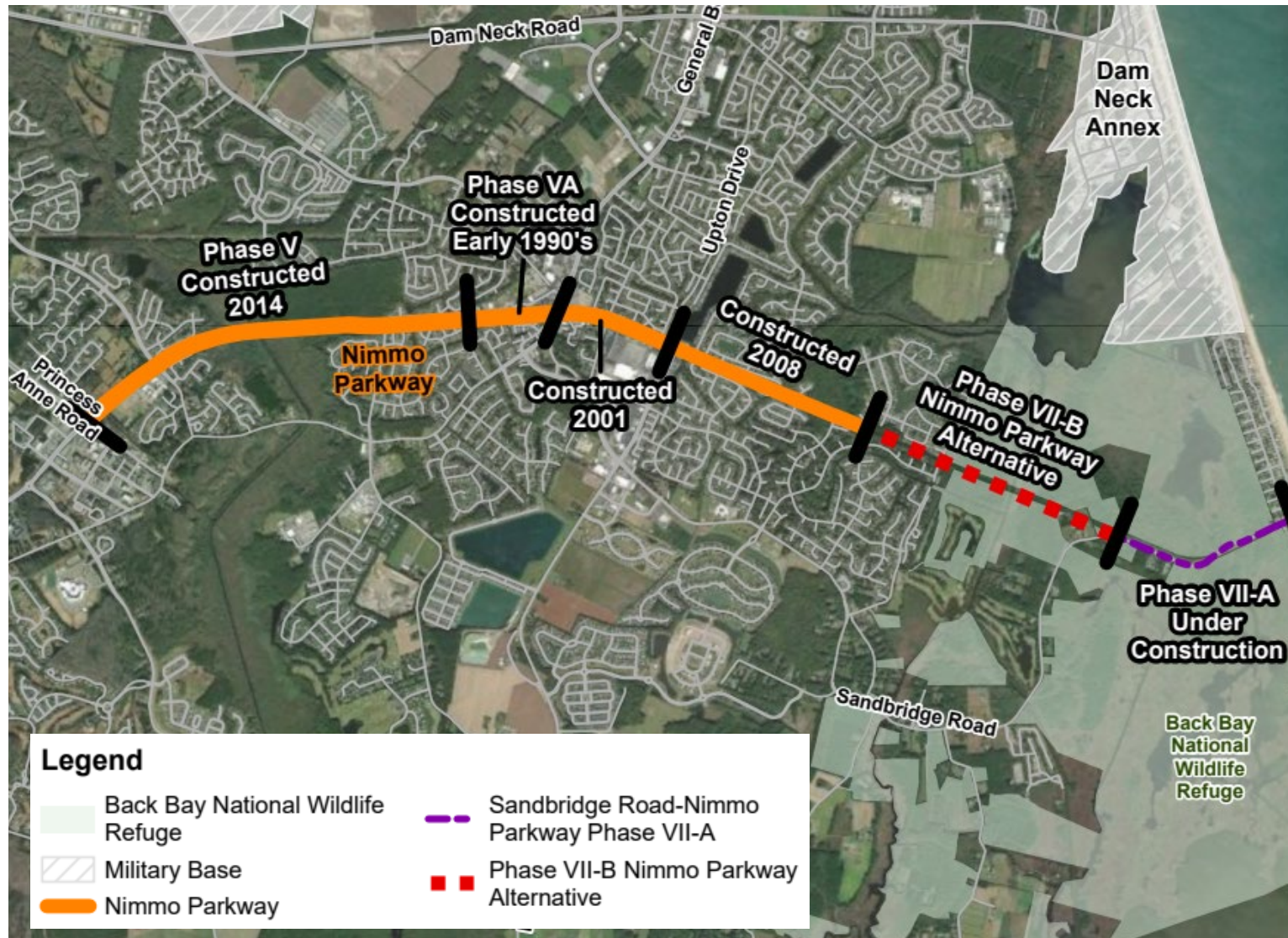
NEPA Process Introduction

- The National Environmental Policy Act (NEPA) applies to projects with a federal action, federal land, and/or federal funding
- For projects on new location, VDOT seeks direction from the CTB on the location of the preferred alternative (§ 33.2-208) that is to be included in the NEPA document
- Projects that that are assumed to result in significant impacts require an Environmental Impact Statement (EIS) to comply with NEPA
- When the level of impact is undetermined, an Environmental Assessment (EA) is prepared to comply with NEPA
- Multi-alternative EAs and EISs are the most complex

City of Virginia Beach Nimmo Parkway Phase VII-B History

- History of study for the roadway dates to 1968
- The Nimmo Parkway has been constructed as independent projects which achieved localized transportation goals and advanced the vision for the Parkway to improve access to and from Sandbridge
- Initial projects were constructed in the 1990s with additional projects constructed in 2008 and 2014
- The Phase VII-A project is currently under construction, realigning and elevating Sandbridge Road between the oceanfront and the VII-B Study Area
- The Phase VII-B project is the subject of the ongoing NEPA work

City of Virginia Beach Nimmo Parkway: Background



Nimmo Parkway Phase VII-B NEPA Background

- For Phase VII-B, the City developed an EA to document a single build alternative to extend Nimmo Parkway 1.8 miles
- FHWA approved the EA for public availability in May 2022
 - The purpose and need documented in the EA was: Provide reliable access and connectivity to the Sandbridge Community.
- Comments from other federal regulatory agencies on the EA led FHWA, VDOT, and the City to determine that an EIS was necessary, including a commitment to analyze improvements to existing Sandbridge Road

Nimmo Parkway Phase VII-B NEPA Background

A decision to elevate the level of NEPA document to an EIS was informed by comments related to:

- The proximity to Back Bay National Wildlife Refuge (BBNWR)
- The potential for impacts to BBNWR property
- The documented abundance of sensitive wildlife and habitat in the surrounding area

EIS Initiation

- January 2024: VDOT and the City amend a Project Agreement for Nimmo Parkway to allow VDOT to administer the NEPA process for the project
- March 2024: VDOT initiates agency coordination under NEPA with federal agencies and relevant state and local entities
- April-September 2024: VDOT coordinates with federal, state, and local agencies through monthly meetings; VDOT conducts field studies; and City of Virginia Beach conducts public involvement

Scope of the EIS

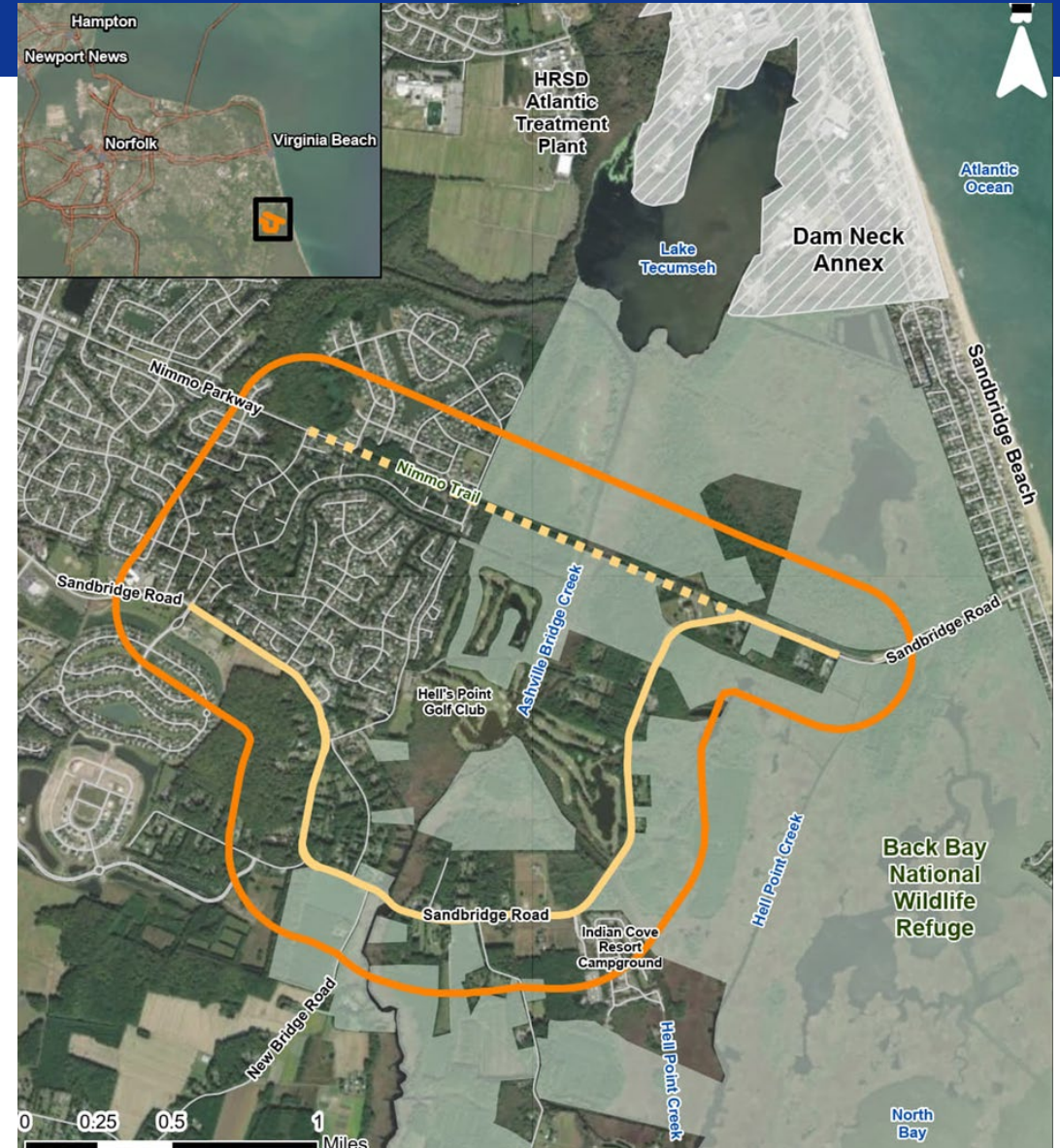
The EIS will consider:

- Improvements to Existing Sandbridge Road
- Extending Nimmo Parkway

Alternatives will be assessed to determine the extent to which they meet purpose and need

Legend

- | | |
|-----------------------------------------------------------------------------------------------------------------------|--------------------------------------------------------------------------------------------------------------------|
|  Study Area |  Build Alternatives Alignment |
|  Back Bay National Wildlife Refuge |  Nimmo Parkway |
|  Military Base |  Sandbridge Road |



Next Steps with CTB

Activity	Timeframe*
CTB Briefing on Purpose and Need	Fall 2024
CTB Briefing on Range of Alternatives	Late 2024/Early 2025
CTB Action on Location Decision/Preferred Alternative	Spring 2025

*Schedule subject to change as NEPA process advances

