



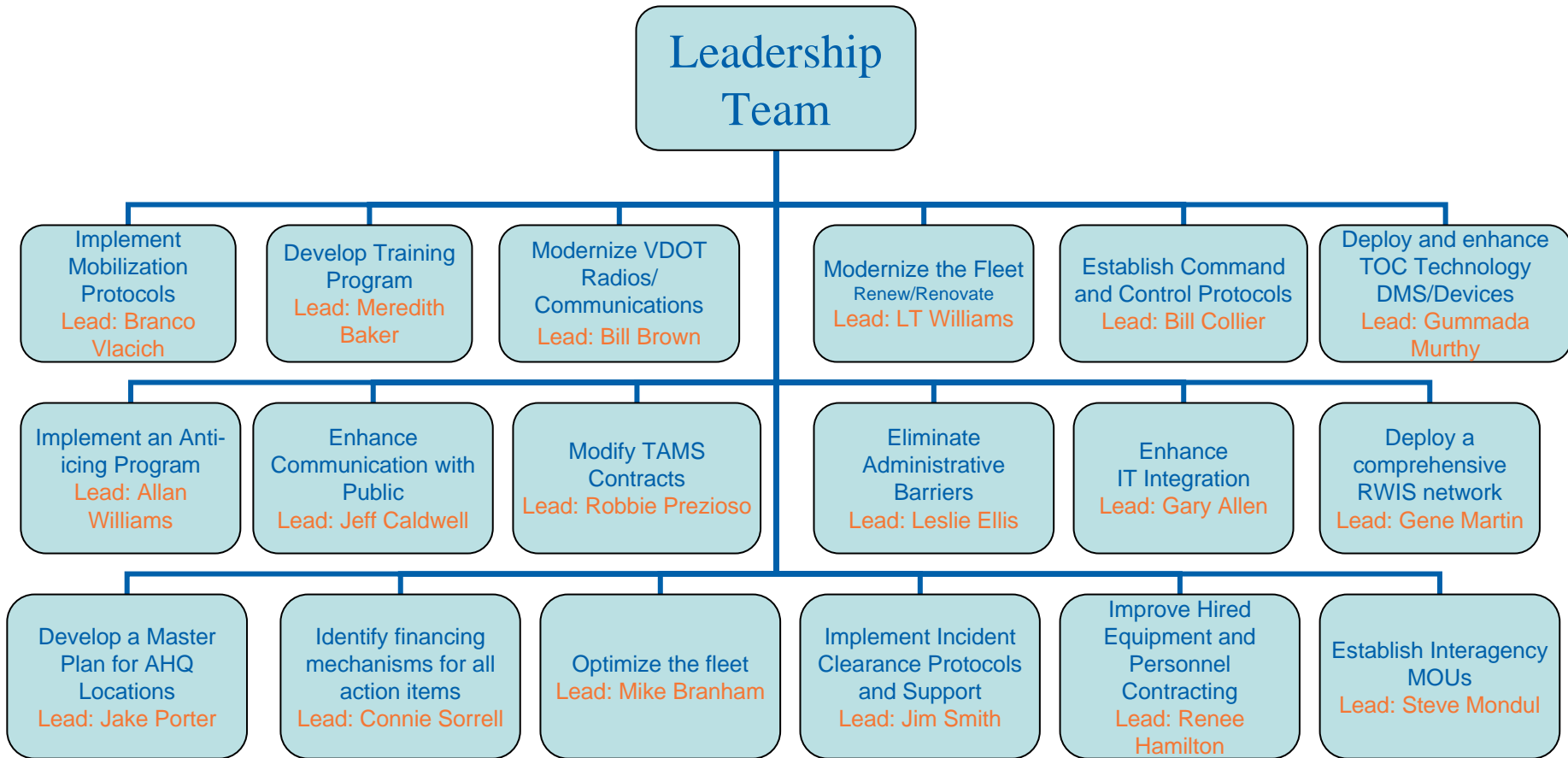
*A Commitment to Focus -*  
An Emergency Response  
Action Plan – Progress Report

***September 17, 2008***  
***David S. Ekern, P.E.***  
***Commissioner***

# *The Goals*

- *Create a department-wide, comprehensive, and coordinated incident-response focus*
- *Realign funding, equipment, and protocols to strengthen all stages of incident response*
- *Balance VDOT and contract resources to improve snow and ice management*
- *Eliminate barriers that hinder response*

# Implementation Team Structure



# Central Plan Themes

- Improve communication with the public and media
- Implement best practices for incident response statewide
- Adopt the NIMS principles and procedures
- Improve and institutionalize incident response training
- Improve coordination between other agencies and private sector involved in incident response.



# Accomplishments

- The Role of Traffic Management Centers clarified as Traffic Operations Centers
- “Duty Officer” is active 24/7/365 in all Districts
- 3655 miles of Significant Roads are to be Anti-Iced the winter of 2008/2009
- Anti-Icing is included in TAMS Snow Plans



- RWIS with Dedicated Weather Forecasting will support Statewide Winter Emergency Response

# Training



- TERI – Transportation Emergency Institute has been created – **150 Trained Duty Officers – TAMS Leaders Incorporated in Training**

- TERI #1 Aug 17 thru 22  
40 Duty Officers Trained
- TERI #2 Sept 7 thru 12  
35 Duty Officers Trained
- TERI #3 Sept 21 thru 26
- TERI #4 Oct 5 thru 10

- Operator training at a local level – **Begins mid October**

# Anti- Icing

## Anti-Icing Lanes Miles 2008-2009

Bristol	207
Salem	516
Lynchburg	474
Richmond	329
Hampton Roads	213
Fredericksburg	280
Culpeper	219
Staunton	319
NOVA	1097
<b>Total</b>	<b>3655</b>



- TAMS Contractor Snow Plans include Anti-Icing on the Interstate System

# Status of VDOT's RWIS Program

## Number of Sites

**46 fixed RWIS sites across all 9 Districts**

**21 Smart RWIS sites deployed along I-81 & I-77**

**5 mobile RWIS with cameras and traffic sensors**

## Operational Status

**5 sites awaiting restoration of power and/or communications**

**1 offline site to be fully upgraded**

**Standalone deployments to be replaced**

## New RWIS Installations in 2008

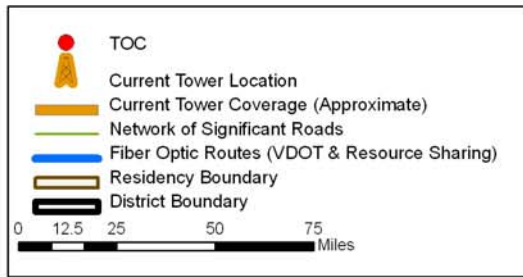
**3 sites on bridges**

**2 in Salem**

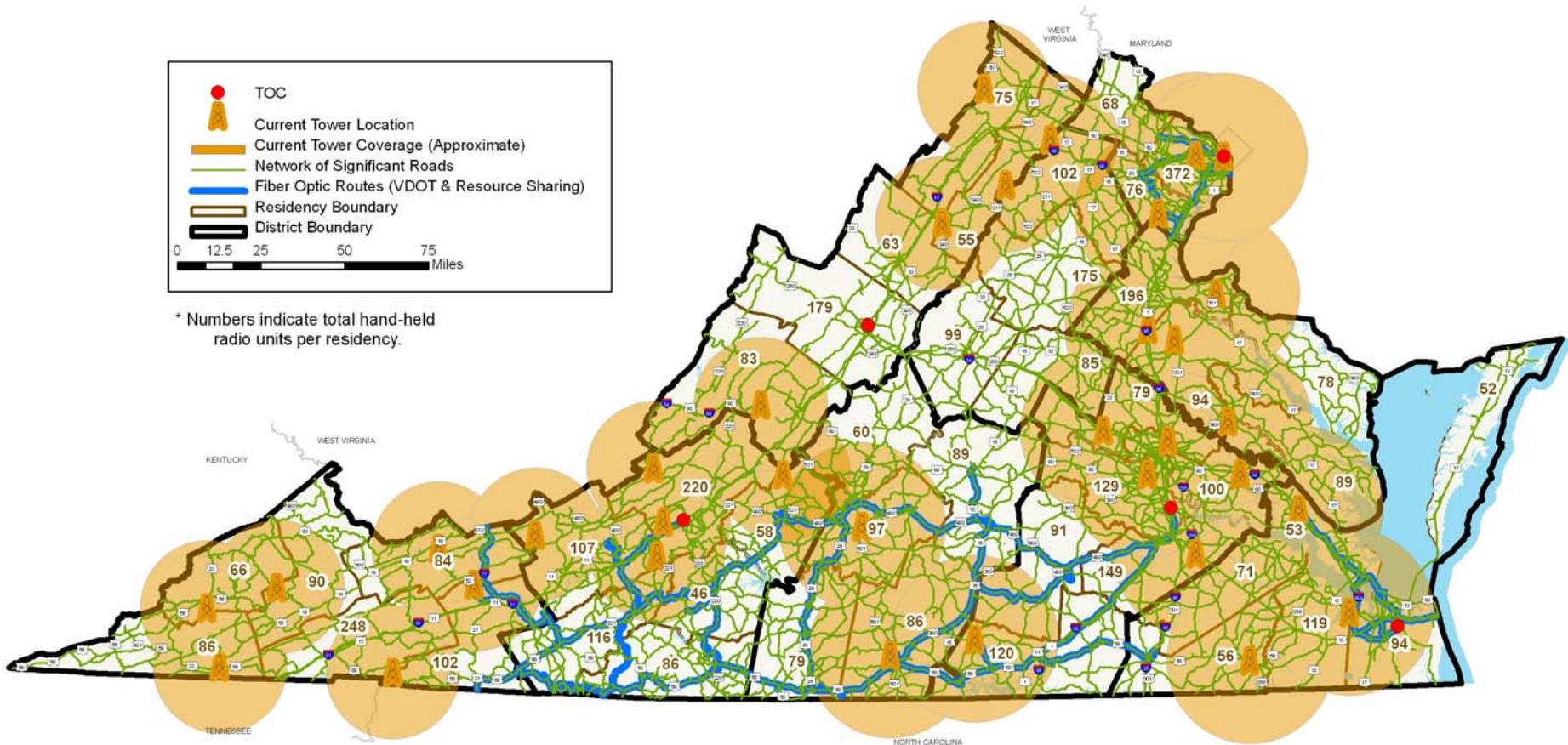
**8 sites in the Springfield Interchange**



# 18,000 Mile Network of Significant Roads with Radio Coverage and Fiber Optic Locations



\* Numbers indicate total hand-held radio units per residency.



# *THE MISSION*

**Plan, deliver, operate and maintain a transportation system that is safe, enables the easy movement of people and goods, enhances the economy, and improves the quality of life.**