

**A G E N D A**

**MEETING OF THE COMMONWEALTH TRANSPORTATION BOARD**

**Richmond, Virginia  
May 16, 1991  
10:00 a.m.**

1. **Public Comment**
2. **Action on Minutes of Meeting of March 21, 1991**
3. **Action on Permits Issued and Canceled from April 1, 1991 through April 30, 1991**
4. **Action on Additions, Abandonments or Other Changes in the Secondary System from March 22, 1991 to April 15, 1991**
5. **Action on Discontinuances in the Secondary System: Bedford, Greenville, Mathews and Necklenburg Counties**
6. **Action on Abandonments in the Primary System: Richmond County**
7. **City Street Mileage**
8. **Action on Bids Received April 23, 1991**
9. **Consultant Agreement:**      **Subsurface Utility Designating Services and Subsurface Utility Location (Test Hole) Services  
Culpeper, Fredericksburg, Northern Virginia, Staunton & Suffolk Districts  
Two-Year Contract  
So Deep, Inc.**
- Consultant Agreement:**      **Subsurface Utility Designating Services and Subsurface Utility Location (Test Hole) Services  
Bristol, Lynchburg, Richmond & Salem Districts  
Two-Year Contract  
Spectra Group**
- Consultant Agreement:**      **RF&P Railroad over Braddock Road  
City of Alexandria  
Proj. U000-100-110, PE101, B604  
Consultant services to provide professional engineering services  
Ralph Whitehead and Associates**

10. Location: Route 501 (Broad Street Extension)  
City of South Boston  
Proj. 0501-130-102, PE101  
Federal Proj. F-41-1( )  
Fr: Int. of Third Street  
To: 0.1 Mi. S. Int. Cavalier Boulevard
11. Location & Design: Route 39 - Rockbridge County  
Proj. 0039-081-112, C501  
Federal Proj. RS-936 ( )  
Fr: 1.74 Mi. W. Int. Route 11  
To: Int. Route 11
- Location & Design: Pacific Avenue/General Booth Boulevard  
City of Virginia Beach  
Proj. U000-134-119, C501  
Fr: 0.11 Mi. N. Int. Norfolk Avenue  
To: 0.01 Mi. N. Int. Harbour Point  
(Bridge and Approaches over Rudee Inlet)
- Location & Design: Route 608 (West Ox Road) Fairfax County  
Proj. 0608-029-265, C501, B677  
Fr: 0.17 Mi. S. of Horsepen Run  
To: 0.25 Mi. N. of Horsepen Run
- Location & Design: Route 634 (Old York-Hampton Road) York County  
Proj. 0634-099-121, C501, C502  
Federal Proj. M-5122  
Fr: 0.05 Mi. E. Int. Route 17  
To: Int. Route 704 (Cook Road)
12. Proposal for Limited Access: Route 257 Rockingham County  
Proj. 0257-082-106, C502, B601  
Fr: Route 11  
To: Route 81
13. Conveyances: Route 29 - Pittsylvania County  
Route 128 - City of Lynchburg  
Route 635 - Gloucester County  
Route 29 - City of Danville  
Route 600 - Rockbridge County  
Route 42 - Rockingham County  
Route 58 - Russell County  
Route 60 - Buckingham County  
Route 81 - Smyth County  
Route 606 - Henry County  
Route 610 - Prince William County  
Route 613 - Rockingham County  
Route 654 - Loudoun County  
Route 1011 - Campbell County  
29th Street South - Arlington County

14. Industrial Access: Culpeper County  
(Deallocation) Proj. 0786-023-181, M502  
Luth International, Inc.  
(Cellin Manufacturing, Inc.)  
  
Industrial Access: Hanover County  
Proj: 1000-042-273, M501  
Richmond Newspapers, Inc.  
  
Industrial Access: Rockbridge County  
Proj. 0675-081-212, M501  
W. R. Deacon & Sons Timber, Inc.
15. Through Truck Restrictions: Routes 610 and 614  
Greensville County
16. Naming of Bridge: Madison County and Orange County  
James Lawson Kemper Memorial Bridge
17. Approval of the Tentative Fiscal Year 1991-92 Annual Budget
18. 1991-92 Tentative Allocations and Six Year Improvement  
Program (1991-92 - 1996-1997)
19. Fiscal Year 1992 Financial Assistance to Public Transportation  
Program of Projects
20. Toll Road Corporation of Virginia
21. New Business
22. Adjourn

MINUTES  
OF  
MEETING OF THE COMMONWEALTH TRANSPORTATION BOARD

Richmond, Virginia  
May 16, 1991  
10:00 a.m.

The monthly meeting of the Commonwealth Transportation Board was held in the Board Room of the Department of Transportation in Richmond, Virginia on April 18, 1991, at 10:00 a.m. The Chairman, Mr. John G. Milliken, presided.

Present: Messrs. Pethel, Bacon, Candler, Davies, Hoffer, Howlette, Malbon, Mastracco, Musselwhite, Smalley, Waldman, Warner, Wells and Mrs. Kincheloe and Dr. Thomas.

During the Public Comment period and in recognition of Public Transportation Week, certificates of recognition were presented to Baxter Simmons, President of VAFTO; Don Newcomb, Chairman of the Board of Directors of Ridefinders on behalf of Ridesharing organizations throughout the state; and Henry Church, General Manager of GRTC on behalf of transit properties throughout the state.

Also, Mr. Urchie Ellis read a paper concerning the Springfield Bypass and Mr. Stephen Robin, an attorney representing TRCV and several landowners, spoke briefly regarding right-of-way at the Route 607 interchange.

On motion of Mr. Mastracco, seconded by Mr. Candler, the Minutes of the Meeting of March 21, 1991, were approved.

Motion carried.

On motion of Mr. Mastracco, seconded by Mr. Candler, permits issued and canceled from April 1, 1991 through April 30, 1991, inclusive as shown by the records of the Department, were approved.

Motion carried.

5/16/91

Moved by Mr. Mastracco, seconded by Mr. Candler, that the Board approve additions and abandonments to the Secondary System from March 22, 1991 to April 15, 1991, inclusive, as shown by the records of the Department.

Motion carried.

Moved by Mr. Mastracco, seconded by Mr. Candler, that

WHEREAS, by proper resolution, the Boards of Supervisors of Bedford, Greensville, Mathews and Mecklenburg Counties have requested that certain roads which no longer serve as public necessities be discontinued as part of the Secondary System of Highways.

NOW, THEREFORE, BE IT RESOLVED, that pursuant to Section 33.1-150 of the Code of Virginia of 1950, as amended, the Commonwealth Transportation Board finds the following sections of roads are not required for public convenience and are hereby discontinued as part of the Secondary System of Highways, effective this date.

Bedford County - Route 621 - Section 1 of old location  
0.24 Mi

Greensville County - Route 610 - Section 1 of old location  
0.09 Mi

Mathews County - Route 611 - Sections 1, 2, 3 and 4 of old location  
0.63 Mi

Mecklenburg County - Route 821 - Section 2 of old location  
0.08 Mi

Motion carried.

Moved by Mr. Mastracco, seconded by Mr. Candler, that

WHEREAS, Old Route 3 in Richmond County has been altered and reconstructed as shown on plans for Project: 0003-079-110, RW-201, C-501; and

WHEREAS, three sections of the old road are no longer necessary as a public road, the new road serving the same citizens as the old;

5/16/91

NOW, THEREFORE, BE IT RESOLVED, that pursuant to Section 33.1-148 of the Code of Virginia of 1950, as amended, 0.568 mile of Old Route 3, designated as Sections 1, 2, and 3 on the plat dated October 22, 1990, Project: 0003-079-110, RW-201, C-501, be abandoned as part of the State Highway System.

Motion carried.

Moved by Mr. Mastracco, seconded by Mr. Candler, that

WHEREAS, the Commonwealth Transportation Board is authorized under Section 33.1-41.1 of the Code of Virginia, as amended to approve payments to cities and certain towns for street maintenance purposes; and

WHEREAS, certain Principal-Minor Arterial Roads, Collector Roads and Local Streets within the corporate limits of the Town of Blacksburg are eligible for such payment; and

WHEREAS, under the authority of Section 33.1-41.1, request is made by the Town of Blacksburg, for maintenance payments on Local Streets meeting the required criteria;

NOW, THEREFORE, BE IT RESOLVED, that the street mileage eligible for quarterly payments to the Town of Blacksburg for Local Streets be increased by 1.23 centerline miles. This increase is a result of additions of Local Streets as described on tabulation sheet number 1 of 1 for the Town of Blacksburg, as functionally classified by the Transportation Planning Division dated March 19, 1991.

The tabulation sheet is on file in the Department's Urban Division.

The Local Street additions totaling 1.23 miles increases the total mileage to 74.39 centerline miles of approved streets subject to maintenance payments effective for payment beginning July 1, 1991.

Motion carried.

5/16/91

Moved by Mr. Mastracco, seconded by Mr. Candler,  
that

WHEREAS, the Commonwealth Transportation Board is authorized under Section 33.1-41.1 of the Code of Virginia, as amended to approve payments to cities and certain towns for street maintenance purposes; and

WHEREAS, certain Principal-Minor Arterial Roads, Collector Roads and Local Streets within the corporate limits of the City of Colonial Heights are eligible for such payment; and

WHEREAS, under the authority of Section 33.1-41.1 request is made by the City of Colonial Heights for maintenance payments on Local Streets meeting the required criteria;

NOW, THEREFORE, BE IT RESOLVED, that the street mileage eligible for quarterly payments to the City of Colonial Heights for Local Streets be increased by 0.19 centerline mile. This increase is a result of additions of Local Streets as described on tabulation sheet numbered 1 of 1 for the City of Colonial Heights, as functionally classified by the Transportation Planning Division dated March 27, 1991.

The tabulation sheet is on file in the Department's Urban Division.

The Local Street additions totaling 0.19 mile increases the total mileage to 65.36 centerline miles of approved streets subject to maintenance payments effective for payment beginning July 1, 1991.

Motion carried.

Moved by Mr. Mastracco, seconded by Mr. Candler,  
that

WHEREAS, the Commonwealth Transportation Board is authorized under Section 33.1-41.1 of the Code of Virginia, as amended to approve payments to cities and certain towns for street maintenance purposes; and

WHEREAS, certain Principal-Minor Arterial Roads, Collector Roads and Local Streets within the corporate limits of the City of Franklin are eligible for such payment; and

5/16/91

WHEREAS, under the authority of Section 33.1-41.1, request is made by the City of Franklin, for maintenance payments on Local Streets meeting the required criteria;

NOW, THEREFORE, BE IT RESOLVED, that the street mileage eligible for quarterly payments to the City of Franklin for Local Streets be increased by 0.48 centerline miles. This increase is a result of additions of Local Streets as described on tabulation sheet numbered 1 of 1 for the City of Franklin, as functionally classified by the Transportation Planning Division dated April 5, 1991.

The tabulation sheet is on file in the Department's Urban Division.

The Local Street additions totaling 0.48 mile increases the total mileage to 25.56 centerline miles of approved streets subject to maintenance payments effective for payment beginning July 1, 1991.

Motion carried.

Moved by Mr. Mastracco, seconded by Mr. Candler, that

WHEREAS, the Commonwealth Transportation Board is authorized under Section 33.1-41.1 of the Code of Virginia, as amended to approve payments to cities and certain towns for street maintenance purposes; and

WHEREAS, certain Principal-Minor Arterial Roads, Collector Roads and Local Streets within the corporate limits of the Town of Front Royal are eligible for such payment; and

WHEREAS, under the authority of Section 33.1-41.1, request is made by the Town of Front Royal for maintenance payments on Local Streets meeting the required criteria;

NOW, THEREFORE, BE IT RESOLVED, that the street mileage eligible for quarterly payments to the Town of Front Royal for Local Streets be increased by 2.44 centerline miles. This increase is a result of additions of Local Streets as described on tabulation sheets numbered 1 of 2 for the Town of Front Royal, as functionally classified by the Transportation Planning Division dated April 2, 1991.



5/16/91

The tabulation sheets are on file in the Department's Urban Division.

The Local Street additions totaling 2.44 miles increases the total mileage to 45.81 centerline miles of approved streets subject to maintenance payments effective for payment beginning July 1, 1991.

Motion carried.

Moved by Mr. Mastracco, seconded by Mr. Candler, that

WHEREAS, the Commonwealth Transportation Board is authorized under Section 33.1-41.1 of the Code of Virginia, as amended to approve payments to cities and certain towns for street maintenance purposes; and

WHEREAS, certain Principal-Minor Arterial Roads, Collector Roads and Local Streets within the corporate limits of the Town of Leesburg are eligible for such payment; and

WHEREAS, under the authority of Section 33.1-41.1, request is made by the Town of Leesburg, for maintenance payments on Local Streets meeting the required criteria;

NOW, THEREFORE, BE IT RESOLVED, that the street mileage eligible for quarterly payments to the Town of Leesburg for Local Streets be increased by 2.98 centerline miles. This increase is a result of additions of Local Streets as described on tabulation sheets numbered 1 of 2 for the Town of Leesburg, as functionally classified by the Transportation Planning Division dated April 15, 1991.

The tabulation sheets are on file in the Department's Urban Division.

The Local Street additions totaling 2.908 miles increases the total mileage to 33.12 centerline miles of approved streets subject to maintenance payments effective for payment beginning July 1, 1991.

Motion carried.

5/16/91

Moved by Mr. Mastracco, seconded by Mr. Candler,  
that

WHEREAS, the Commonwealth Transportation Board is authorized under Section 33.1-41.1 of the Code of Virginia, as amended to approve payments to cities and certain towns for street maintenance purposes; and

WHEREAS, certain Principal-Minor Arterial Roads, Collector Roads and Local Streets within the corporate limits of the City of Portsmouth are eligible for such payment; and

WHEREAS, under the authority of Section 33.1-41.1, request is made by the City of Portsmouth for maintenance payments on Local Streets meeting the required criteria;

NOW, THEREFORE, BE IT RESOLVED, that the street mileage eligible for quarterly payments to the City of Portsmouth for Local Streets be increased by 2.78 centerline miles. This increase is a result of additions of Local Streets as described on tabulation sheets numbered 1 of 3 for the City of Portsmouth, as functionally classified by the Transportation Planning Division dated April 8, 1991.

The tabulation sheets are on file in the Department's Urban Division.

The Local Street additions totaling 2.78 miles increases the total mileage to 301.35 centerline miles of approved streets subject to maintenance payments effective for payment beginning July 1, 1991.

Motion carried.

Moved by Mr. Mastracco, seconded by Mr. Candler,  
that

WHEREAS, the Commonwealth Transportation Board is authorized under Section 33.1-41.1 of the Code of Virginia, as amended to approve payments to cities and certain towns for street maintenance purposes; and

WHEREAS, certain Principal-Minor Arterial Roads, Collector Roads and Local Streets within the corporate limits of the Town of Pulaski are eligible for such payment; and

5/16/91

WHEREAS, under the authority of Section 33.1-41.1, request is made by the Town of Pulaski, for maintenance payments on Local Streets meeting the required criteria;

NOW, THEREFORE, BE IT RESOLVED, that the street mileage eligible for quarterly payments to the Town of Pulaski for Local Streets be increased by 0.06 centerline mile. This increase is a result of

additions of Local Streets as described on tabulation sheet numbered 1 of 1 for the Town of Pulaski, as functionally classified by the Transportation Planning Division dated April 2, 1991.

The tabulation sheet is on file in the Department's Urban Division.

The Local Street additions totaling 0.06 mile increases the total mileage to 46.41 centerline miles of approved streets subject to maintenance payments effective for payment beginning July 1, 1991.

Motion carried.

Moved by Mr. Mastracco, seconded by Mr. Candler, that

WHEREAS, the Commonwealth Transportation Board is authorized under Section 33.1-41.1 of the Code of Virginia, as amended to approve payments to cities and certain towns for street maintenance purposes; and

WHEREAS, certain Principal-Minor Arterial Roads, Collector Roads and Local Streets within the corporate limits of the Town of Rocky Mount are eligible for such payment; and

WHEREAS, under the authority of Section 33.1-41.1, request is made by the Town of Rocky Mount for maintenance payments on Local Streets meeting the required criteria;

NOW, THEREFORE, BE IT RESOLVED, that the street mileage eligible for quarterly payments to the Town of Rocky Mount for Local Streets be increased by 0.54 centerline mile. This increase is a result of additions of Local Streets as described on tabulation sheet numbered 1 of 1 for the Town of Rocky Mount, as functionally classified by the Transportation Planning Division dated April 4, 1991.

5/16/91

The tabulation sheet is on file in the Department's Urban Division.

The Local Street additions totaling 0.54 mile increases the total mileage to 18.01 centerline miles of approved streets subject to maintenance payments effective for payment beginning July 1, 1991.

Motion carried.

Moved by Mr. Mastracco, seconded by Mr. Candler, that

WHEREAS, the Commonwealth Transportation Board is authorized under Section 33.1-41.1 of the Code of Virginia, as amended to approve payments to cities and certain towns for street maintenance purposes; and

WHEREAS, certain Principal-Minor Arterial Roads, Collector Roads and Local Streets within the corporate limits of the City of Salem are eligible for such payment; and

WHEREAS, under the authority of Section 33.1-41.1, request is made by the City of Salem, for maintenance payments on Local Streets meeting the required criteria;

NOW, THEREFORE, BE IT RESOLVED, that the street mileage eligible for quarterly payments to the City of Salem for Local Streets be increased by 1.10 centerline miles. This increase is a result of additions of Local Streets as described on tabulation sheet numbered 1 of 1 for the City of Salem, as functionally classified by the Transportation Planning Division dated April 3, 1991.

The tabulation sheet is on file in the Department's Urban Division.

The Local Street additions totaling 1.10 miles increases the total mileage to 101.27 centerline miles of approved streets subject to maintenance payments effective for payment beginning July 1, 1991.

Motion carried.

5/16/91

Moved by Mr. Mastracco, seconded by Mr. Candler,  
that

WHEREAS, the Commonwealth Transportation Board is authorized under Section 33.1-41.1 of the Code of Virginia, as amended to approve payments to cities and certain towns for street maintenance purposes; and

WHEREAS, certain Principal-Minor Arterial Roads, Collector Roads and Local Streets within the corporate limits of the Town of Wise are eligible for such payment; and

WHEREAS, under the authority of Section 33.1-41.1, request is made by the Town of Wise for maintenance payments on Minor Arterial Roads and Local Streets meeting the required criteria;

NOW, THEREFORE, BE IT RESOLVED, that the road/street mileage eligible for quarterly payments to the Town of Wise for Minor Arterial Roads and Local Streets be increased by 1.33 centerline miles. This increase is a result of additions of Minor Arterial Roads and Local Streets as described on tabulation sheet numbered 1 of 1 for the Town of Wise, as functionally classified by the Transportation Planning Division dated April 12, 1991.

The tabulation sheet is on file in the Department's Urban Division.

The Minor Arterial Road additions having a net increase of 0.88 mile increases the total mileage to 6.55 centerline miles of approved roads subject to maintenance payments effective for payment beginning July 1, 1991.

The Local Street additions totaling 0.45 mile increases the total mileage to 18.57 centerline miles of approved streets subject to maintenance payments effective for payment beginning July 1, 1991.

Motion carried.

5/16/91

Moved by Mr. Waldman, seconded by Mr. Hoffler, that the Board approve the bids received April 23, 1991, listed for award on the attached sheets numbered 10A through 10F and authorize execution of contracts by the Deputy Commissioner or Chief Engineer, and approve rejection of those bids listed for rejection and authorize readvertisement.

Motion carried.



| Item # | Contract # | Item Description                                 | Quantity | Unit Price   | Total Price    |
|--------|------------|--|----------|--------------|----------------|
| 1      | 1704       | AWARD  | 1        | \$261,850.16 | \$261,850.16   |
|        |            | WOODINGTON CORPORATION<br>ROSELLE, VA            |          |              |                |
| 2      | 1759       | AWARD  | 4        | \$642,903.68 | \$2,571,614.72 |
|        |            | FORALCO CORPORATION<br>RICHMOND, VA              |          |              |                |
| 3      | 1801       | AWARD  | 2        | \$43,861.32  | \$87,722.64    |
|        |            | DIENVILLE LONE PARTING, INC.<br>DIENVILLE, VA    |          |              |                |
| 4      | 1802       | AWARD  | 4        | \$276,112.60 | \$1,104,450.40 |
|        |            | PAYMENT SPECIALISTS, INC. & SUBS.<br>MADISON, OH |          |              |                |



INFILTRATE PROJECT

|   |      |          |          |      |  |       |  |   |              |
|---|------|----------|----------|------|--|-------|--|---|--------------|
| 5 | 1804 | 91700004 | BB-2B-91 | 64   | Est. 64 WEL & BEL South Approach Dam over Hampton Beach<br>Hampton Beach<br>Hampton Bch. Dr. Tunnel<br>Dr. Tunn. - 1/4 Section (2 Box) | AWARD | FRESHWATER CONCRETE CONST. CO., & SUB.<br>FLORENCE, AL | 5 | \$102,241.89 |
| 6 | 1805 | 91700001 | FB-2-91  | I-41 | Various Locations<br>Removal, Reexcavation & Replacement of 1/4" Pipes & Clean<br>Spells in Front of Race                              | AWARD | J & F FENCE CO., INC.<br>WEYERS CAVE, VA               | 5 | \$179,378.75 |
| 7 | 1806 | 91701000 | BB-50-91 | 64   | Est. 64 BEL & WEL over Southern Beach Elizabeth Dr.<br>City of Chesapeake<br>Essex Court, Chesley                                      | AWARD | CENTRAL ATLANTIC CONTRACTORS, INC.<br>ARDESDEN, MD     | 3 | \$871,156.28 |
| 8 | 1807 | 91702004 | FB-1-91  | 68   | Various Locations<br>Bay, Washington & Wylie Co's<br>Pipes Replacement   | AWARD | UTILITY CONSTRUCTION CO.<br>MOBILE, VA                 | 8 | \$97,562.50  |





**STATE PROJECTS**

9 1025 91F02091 MON-6-61 65 AWARD APEX CONTRACTING, INC. 4 \$63,847.00  
 PARK, KY

From: 65 NBL Spotsylvania Co. M.P. 14.76  
 To: 65 NBL Stafford Co. M.P. 09.35  
 Bedford & Spotsylvania Co's  
 Overhead & Dr. Mount Sign Installation

10 1029 91F02067 0081-004-2009,2002 11 AWARD CLERCO CORPORATION 2 \$611,785.00  
 0081-004-2003,2002  
 0081-004-2007,2002  
 0011-005-1003,2001  
 0011-005-1947,2001  
 0011-005-1009,2001

Various Locations  
 Frederick & Manassas Co's  
 Dr. Signs

11C

11 1022 91R03262 6-0-91 01 AWARD VALLEY ASPHALT PRODUCTS, INC. 1 \$1,005,185.43  
 CLEAR BROOK, VA

From: 0.1 MI. N. Rte. 11  
 To: West Virginia IL  
 Frederick County  
 Fabricated Geomembrane Edge Detail I/P-5,  
 & Pave. Finishing With Rockfilling



13 1779 91P7983 PR-A1-91 495 1-493 at Exlan 5, 6, 7 & 8  
**INTERSTATE PROJECTS**  
 Prince George's County  
 Replacement & Restoration of Jump Areas

**PROJECT** PTO'S CONSTR. CO., INC.  
 BEAVER HEIGHTS, MD

5 \$1,615,306.00

1 78-91A 910079A4 0211-078-1104-2801 211  
**PRIMARY PRODUCTS**  
 Box 211 Mar. ever Big Branch (0.3 MI. E.  
 SCL. Washington)  
 Fayetteville, County  
 WVA. Support. Replacement & Asphalt Coat.  
 Overlay

**AWARD** DLS, INC.  
 HILLSVILLE, VA

2 \$175,994.50

11D

2 1641 90P64173 PCB-4-20 230 Various Locations  
 Cecil County  
 Pipe Rehabilitation  
 (Removal Later)

**AWARD** INSTIFORM EAST, INC. & SUBS.  
 LANDOVER, MD

1 \$174,994.00



| NO. | PROJECT NO.                                       | PROJECT NAME   | STATUS | AWARD DATE | AWARD AMOUNT   |
|-----|---|--|--------|------------|----------------|
| 3   | 1825 91P0403 JP-3B-01                             | <p><b>ZEMARY PROJECTS</b></p> <p>2 Locations - Bldg. 501 Location - Bldg. L51<br/>                     Ambient &amp; Noise Co. V.<br/>                     Pipe Cabinet Rehabilitation by Jack Pipe Method</p>   | AWARD  | 4          | \$51,734.00    |
| 4   | 60-PLA 91056A7 0532-054-110.CSM, 2603 P-073-(103) | <p>From: 0.14 ML S. of NCL Midway<br/>                     To: 0.57 MG. N. Rd. Rm. 203<br/>                     Loudon County<br/>                     Grading, Driveway, Asphalt Conc. Pave.,<br/>                     Utilities, Excels. &amp; Dr.</p> | AWARD  | 12         | \$4,000,332.30 |
| 5   | 1767 91F7377 0340-042-1000.0000                   | <p>Rm. 360 over Chainway Ex.<br/>                     Remorse Camp<br/>                     Br. Deck &amp; Floor Repair.</p>   | AWARD  | 1          | \$147,877.50   |
| 6   | 1795 91F7785 22-1B-01                             | <p>From: Bldg. 710<br/>                     To: 0.01 ML N. Rm. 710 (DUBL)<br/>                     Accomack County<br/>                     Break &amp; Seal Conc. Pave., Asphalt Conc.<br/>                     Overlay</p>                             | AWARD  | 2          | \$339,814.00   |



| 7                       | 1887 | 91PR0793 | SCAL-6-91         | 361           | 149 MI. S. Maryland-VA BL  | AWARD | CENTURY COMPONENTS SERVICES, INC.                   | 3 | \$112,063.00 |
|-------------------------|------|----------|-------------------|---------------|--|-------|---|---|--------------|
|                         |      |          |                   |               | King George County<br>Delapour Estates (Glenelg/Spanglers)   |       | VIRGINIA BEACH, VA                                  |   |              |
| <u>PRIMARY PROJECTS</u> |      |          |                   |               |  |       |   |   |              |
| 8                       | 1811 | 91PR1197 | 6431-052-7173-031 | 421           | From: 6.114 MI. S. Int. Rte. 765<br>To: 6.056 MI. E. Int. Rte. 765<br>Lee County<br>State Description                | AWARD | D & D CONSTRUCTION COMPANY<br>CHELSEA, VA           | 9 | \$534,300.25 |
| 9                       | 1813 | 91PR1193 | CS-6-91           | 17 NBL        | From: Int. 691<br>To: Regular CL<br>Stafford County<br>Cook & Son Const. Pinc.                                       | AWARD | POMALCO CORPORATION<br>RICHMOND, VA                 | 3 | \$153,719.70 |
| 10                      | 1811 | 91PR1193 | BB-5A-91          | 19<br>&<br>54 | Various Locations<br>Life of World Co. &<br>City of Suffolk<br>Essex Const. Overlay & Waterproof Projects<br>(4 Bn.) | AWARD | CENTRAL ATLANTIC CONTRACTORS, INC.<br>ARLINGTON, MD | 7 | \$284,654.00 |



| Item No. | Project No.                                | Project Description  | Status | Contractor Name                                    | Location | Amount         |
|----------|--|--|--------|--|----------|----------------|
| 11       | 0011-005-701, A6500<br>0050-004-701, A6500 | <u>PRIMARY PROJECTS</u><br>Rte. 112.50 MI. N. WCL Mt. Auburn<br>Rte. 202.40 MI. E. Mt. No. 011<br>Stannard & Frederick Co Y,<br>Burr Chertot | AWARD  | L. F. FRANKLIN & BONS, INC.<br>KEMPENSON, VA       |          | \$822,028.30   |
| 12       | 91F0258 0015-003-1095, B801                | Rte. 15 over Cr. 0.9 MI. S. Rte. 650<br>Louisa County<br>Seymour, Replacement  | AWARD  | DIX, INC.<br>HELLENVILLE, VA                       |          | \$142,352.50   |
| 13       | 91F0258 98-50-98                           | From: D. I. Mt. W. Mt. 694 (M.P. 11.8)<br>To: Southampton-Grovesville CL (M.P. 34.28)<br>Yorkshire County<br>Comm. Pave. Exp.                | AWARD  | CENTRAL ATLANTIC CONTRACTORS, INC.<br>ABERDEEN, MD |          | \$794,688.00   |
| 14       | 72-91A 9107201 0030-048-1950, 0014         | Rte. 50 over Pennsylvania Rr.<br>King William-New Kent CL<br>St. Johns & Operation Brown Memorial  | REJECT | MCLEARY CONTRACTING COMPANY<br>GLEN BURNIE, MD     |          | \$1,877,988.00 |



15 78-91A 91077AAS 0058-896-1069 JB801 58 REJECT FORT CHEWELL CONCRETE CORP. 4 \$465,348.50  
 MAX MEADOWS, VA

**PRIMARY PROJECTS**

Rtn. 56 over South Rock Hillside Rn. (R.06)  
 Mt. W. Mt. Bns. 4330  
 Washington County  
 Rt. Superstr. Replacement, Rehabil. Repar. &  
 Approach Work

16 1734 91173483 8008-062-3677 SR01 6 REJECT DONALD H. BEVACOR, INC. 3 \$86,118.00  
 ABERDEEN, VA

Rtn. 6 over Malley Cr. (R.11) Mt. to  
 B. Mt. Bns. 1510  
 Nelson County  
 Rt. Repr. & Lanez Overlay

11H

1 248-96C 900646C7 0021-126-901 CS01 3 AWARDED E. C. PACER COMPANY, INC. 3 \$1,485,054.35  
 ROANOKE, VA

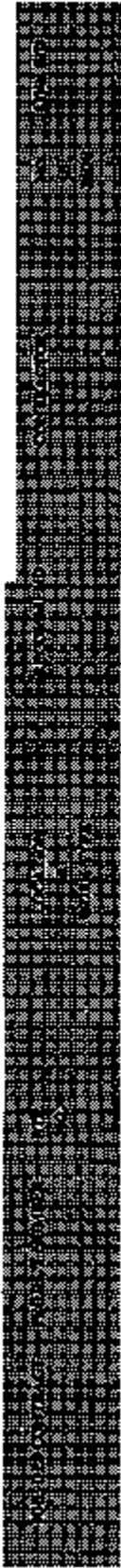
**URBAN PROJECTS**

From: 4.19 MI. E. Mt. Third St.  
 To: 0.028 MI. S. Mt. Elm St.  
 City of Roanoke  
 Grades, Drains, Asphalt Cons. Pave.,  
 Planting, Signals, Pave. Markings &  
 Utilities



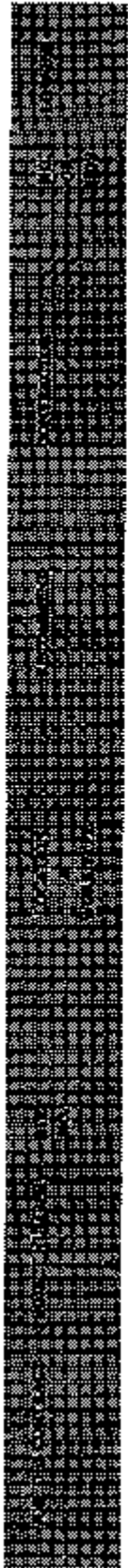
URBAN PROJECTS

|   |        |          |   |      |   |       |  |   |                 |
|---|--------|----------|---|------|---|-------|--|---|-----------------|
| 2 | 2-418  | 9180204  | 6007-079-115,C501<br>6007-110-301,C501          | 7    | <p>From: 0.037 MI. E. of S. Wood St.<br/>To: 0.045 MI. W. Int. Duke Dr.<br/>Fairfax Co. &amp;<br/>City of Falls Church<br/>Grading, Asphalt Conv. Pave., Utilities,<br/>Signals, Pave. Markings, Landscaping &amp;<br/>Irrig.</p> | AWARD | FORT MYER CONSTRUCTION CORPORATION<br>WASHINGTON, D.C. | 7 | \$5,389,070.00  |
| 3 | 1796   | 91875636 | 1207-204-001,300                                | 1207 | <p>From: Int. Rte. 1208<br/>To: Cedar St. (Town of Droyne)<br/>Beddingham Co. (Town of Droyne)<br/>Replacement of Conv. Sidewalk, Curb &amp;<br/>Gutters, Electric, Aug. Base, Asphalt Conv.<br/>Top</p>                          | AWARD | MARCK INC.<br>WAYNESBORO, VA                           | 5 | \$84,625.00     |
| 4 | 67-91A | 91006748 | 6029-104-102,C501<br>6036-002-105,C501,<br>3001 | 250  | <p>From: 0.077 MI. W. of St. Clair Ave.<br/>To: 0.229 MI. E. of Int. Rte. 1189<br/>City of Charlottesville<br/>Grade, Drain, Sewer, Asphalt Conv. Pave.,<br/>Utilities, Signals, Lighting &amp; Ir.</p>                           | AWARD | W. C. ENGLISH, INC.<br>ALFAYETTA, VA                   | 5 | \$15,181,197.15 |

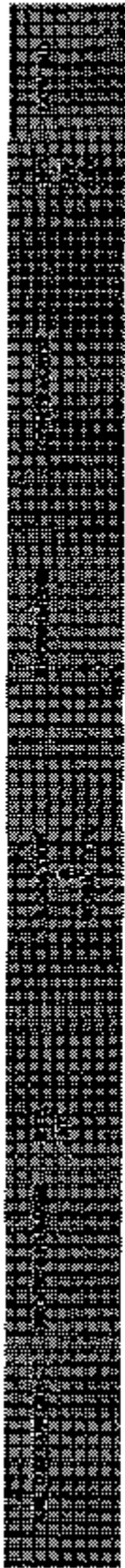


| Item #   | Item Description                | Quantity | Unit Price                                    | Total Price  |
|--|---------------------------------|----------|---|--------------|
| 5  | 75-91A 918076A7 902-90-901,0501 | 29       |   | \$21,766.35  |
| <p><b>URBAN PROJECTS</b></p> <p>Mr. G.M. Mayfield Ed. in Inc. Greenboro RA/ Hunter Bk. City of Durham</p> <p>Traffic Signals</p> |                                 |          |   |              |
|  | AWARD                           |          | T & H ELECTRICAL CORP. WILSON, NC             |              |
| 6  | 76-91A 918076A7 902-90-901,0501 | 173      |   | \$44,797.00  |
| <p>Mr. College Dr. &amp; VaDyckville Bk. Town of Blenheim</p> <p>Traffic Signals</p>   |                                 |          |   |              |
|  | AWARD                           |          | NEW RIVER ELECTRICAL CORPORATION ROMANOVA, VA |              |
| 7  | 1A1P 917658 90-50-91            | 44       |   | \$189,449.55 |
| <p>Various Locations</p> <p>City of Virginia Beach</p> <p>Er. Repar. &amp; Waterproofing Bk. Docks (4 Bks.)</p>                  |                                 |          |   |              |
|  | AWARD                           |          | ROBERTS, INC. BERRYVILLE VA                   |              |



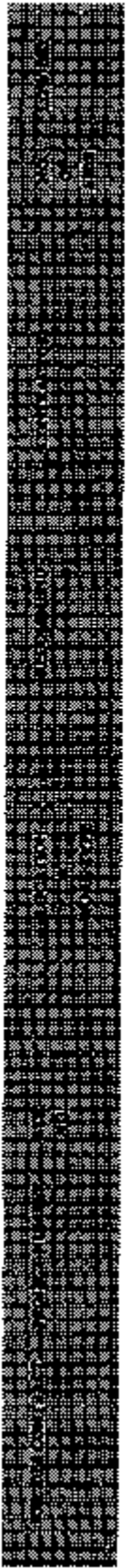


| Item No.           | Project No.     | Project Name  | Location                | Contract No.   | Contract Description   | Contract Value  |
|--------------------|-----------------|---|-------------------------|--|--|-----------------|
| SECONDARY PROJECTS |                 |   |                         |  |  |                 |
| 1                  | 27-21A 910027A7 | 0457-005-122(C501),<br>B612, C502<br>M-3118(L27)<br>B6-M-3118(L27);<br>B2-1417(201) | Condar<br>C500<br>M.    | From: 0.067 MI. E. Southern Hwy.<br>To: 0.34 MI. W. Southern Hwy.<br>Auburn County<br>Drain, Ditch, Inlets, Asphalt Cons.<br>Pave. & Br. | AWARD<br>W. C. ENGLISH, INC.<br>ALTAVERA, VA                   | 10 \$769,606.70 |
| 2                  | 1800 91190060   | 0628-097-7701-431   | 655                     | From: 0.83 MI. E. Sta. 60075. (M.)<br>To: 0.9 MI. E. Sta. 600 (E. Sta.)<br>Wise County<br>Bike Corridor                                  | AWARD<br>CLIFCO CORPORATION<br>BOHEDALE, VA                    | 9 \$63,518.05   |
| 3                  | 1805 91190050   | 0666-078-6082, 6394   | 666                     | Dr. Sta. 646 over I-77<br>Blair County<br>Rt. Ditch Overlay, Repairs & Subst. Repar.   | AWARD<br>OVERLAY, INC.<br>MOTCHILL, KY                         | 4 \$104,144.80  |
| 4                  | 1816 91190502   | 7028-3-91   | 671,<br>750<br>&<br>751 | Veohco Location<br>Hollis County<br>Flow Culvert Replacement   | AWARD<br>LESTER C. SCHLES CONTRACTOR, INC.<br>MARTINSVILLE, VA | 11 \$98,333.66  |

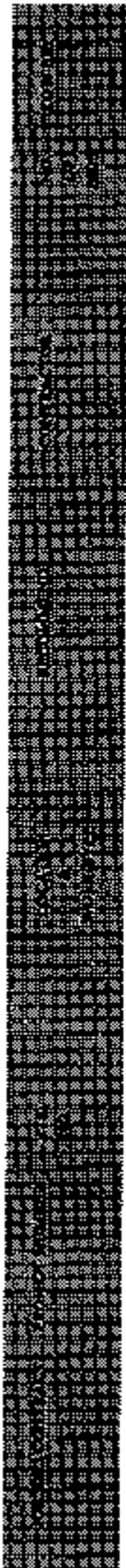


SECONDARY PROJECTS

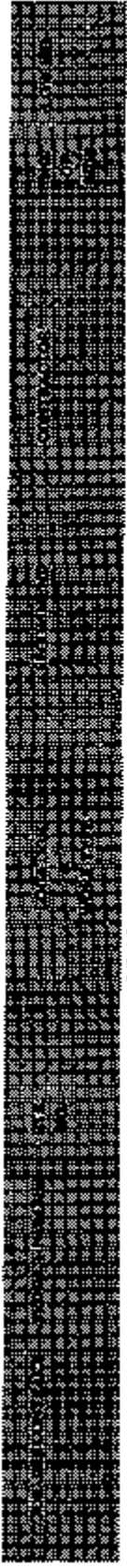
|   |      |          |                    |                 |   |       |  |    |             |
|---|------|----------|--------------------|-----------------|---|-------|--|----|-------------|
| 5 | 1820 | 94762006 | 0086-018-0000-5001 | 686             | <p>Est. on Res. 606 over Res. 95<br/>                     Spotsylvania County<br/>                     Re. Dock Repr. &amp; Joint Replacement</p>   | AWARD | CENTRAL ATLANTIC CONTRACTORS, INC.<br>ABERDEEN, MD | 6  | \$87,347.00 |
| 6 | 1825 | 94762303 | 0610-047-144,14509 | 612<br>&<br>522 | <p>From: 0.84 MI. E. WILLIAMSBURG CL. Res. 612<br/>                     (LONGME BLD.)<br/>                     To: Res. 615 (Longme Connector BLD.)<br/>                     James City Co. &amp;<br/>                     City of Williamsburg<br/>                     Com. Cons. Sidewalk/Drainage &amp; Inlets.</p> | AWARD | PARAGON CONTRACTING, INC.<br>HAMPTON, VA           | 8  | \$24,968.50 |
| 7 | 1826 | 94762403 | 0780-046-184,18509 | 789             | <p>From: Res. 207<br/>                     To: 0.58 MI. S. Bld. 207<br/>                     Caroline County<br/>                     Guards, Drains, Sidewalk &amp; Asphalt Top</p>  | AWARD | STANLEY CONSTR. CO., INC.<br>ASHLAND, VA           | 17 | \$26,912.20 |



| Item #                        | Account #                       | Year | Location          | Description   | Contract Type | Company Name              | Address         | Amount         |
|-------------------------------|---------------------------------|------|-------------------|---|---------------|---------------------------|-----------------|----------------|
| <b>MISCELLANEOUS PROJECTS</b> |                                 |      |                   |   |               |                           |                 |                |
| 1                             | 69-91A 916091A6 PMO-025-90A,356 | Var. | Various Locations | Milham County<br>Asphalt Conc. Overlay & Resurface Building AND<br>Aggr. Stabilize & Asphalt S.T. Pave. | AWARD         | W-L CONST. & PAVING, INC. | CHELSEA, VA     | \$430,968.28   |
| 2                             | 71-91A 916071A6 PMO-097-91A,356 | Var. | Various Locations | Wise County<br>Overlay Exit Pave. with Asphalt Conc. A<br>Build Shoulders                               | AWARD         | W-L CONST. & PAVING, INC. | CHELSEA, VA     | \$211,983.47   |
| 3                             | 105-91A 91603A87 6-4-91         | Var. | Various Locations | Stations District<br>Plant Mix  | AWARD         | ADAMS CONST. COMPANY      | ROANOKE, VA     | \$1,139,857.28 |
| 4                             | 105-91A 91603A86 6-3-91         | Var. | Various Locations | Stations District<br>Plant Mix  | AWARD         | BERNARDON ASPHALT, INC.   | TIMBERVILLE, VA | \$603,033.28   |



| Item No.  | Spec No.  | Item Description  | Unit | Quantity | Unit Price   | Total Price  |
|---|---|---|------|----------|--------------|--------------|
| <u>MISCELLANEOUS PROJECTS</u>                     |   |   |      |          |              |              |
| 5   | 108-91A 91000285 E-C-91   | Various Locations<br>Plant Mix<br>Various Districts   | Yard | 2        | \$99,231.41  | \$99,231.41  |
| AWARD FLAHERTY CONSTR. CORP. & SONS, RICHMOND, VA |   |   |      |          |              |              |
| 6   | 1798 91379824 822-084-91-462  | Various Locations<br>Road Density<br>Surface Wearing Deck Box   | Yard | 6        | \$27,600.00  | \$27,600.00  |
| AWARD CONCRETE, INC. LEBANON, VA                  |   |   |      |          |              |              |
| 7   | 1895 91379825 8794-4-91<br>DB60-989-381, N304<br>PE60-988-383, N304 | Various Locations<br>Removal Districts<br>Installation of Insulated & Reremovable<br>Rigid Foam Material    | Yard | 4        | \$72,517.38  | \$72,517.38  |
| AWARD OGLEBY CONSTRUCTION, INC. NORWALK, OR       |   |   |      |          |              |              |
| 8   | 1804 91379824 06-03-91  | Various Locations<br>Cities of Norfolk, Portsmouth,<br>Chesapeake & Virginia Beach<br>Quarterly Maintenance | Yard | 4        | \$251,740.00 | \$251,740.00 |
| AWARD L. S. LEE, INC. YORK, PA                    |   |   |      |          |              |              |



MICHELLEANSBORN PROJECTS

|    |      |          |                               |      |   |       |  |    |              |
|----|------|----------|-------------------------------|------|---|-------|--|----|--------------|
| 9  | 1812 | 81F07266 | P-84-91                       | Var. | Various Locations<br>Augusta, Rockledge & Rockingham Co's<br>Prepara & Paint Bldg. Structures | AWARD | BOYLE PAINTING CONTRACTOR, INC.<br>EDEN, NC        | 9  | \$379,615.00 |
| 10 | 1814 | 81F01484 | P-7-91                        | Var. | Various Locations<br>Allendale, Greene & Orange Co's<br>Prepara & Paint Bldg. Structures      | AWARD | BOWARD FULLER SANDBLASTING, INC.<br>TROUTVELLA, VA | 10 | \$61,582.00  |
| 11 | 1815 | 81F01580 | PM-9-91<br>F080-987-861,27304 | Var. | Various Locations<br>Chapparr District<br>Personnel Buildings                                 | AWARD | ART-RAY CORP.<br>SUFFOLK, VA                       | 8  | \$84,885.00  |
| 12 | 1827 | 81F02009 | DD-6-91                       | Var. | Various Locations<br>King George & King William Co's<br>Resale Unifedoms (DD-5)               | AWARD | SPARTAN CONSTR., INC.<br>BURLINGTON, KY            | 5  | \$135,878.14 |



MISCELLANEOUS PRODUCTS

| IS | 1879    | 8478064   | 08-A1-91           | Var.   | Various Locations<br>Ridings & Antiques Co's<br>Overseas Employment         | AWARD  | L. S. LEE, INC.<br>YORK, PA                            | 4  | \$118,265.00 |
|----|---------|-----------|--------------------|--|---|--------|--|----|--------------|
| 14 | 1794    | 9477968   | 0280-96A-101, N394 | Var.   | Various Locations<br>Richmond Vn. District<br>Inwood Railroad Pkwy. Martins | REJECT | ACCENT STRIPS, INC.<br>ORSEBAED PARK, NY               | 7  | \$164,870.50 |
| 1  | 140-91A | 9102-02A7 | C390-090-101, C301 | <p>EDM RECEIVED MAY 14, 1991</p> Leeland Parking Lot<br>Stafford Co.<br>Ball Community Parking Lot |   | AWARD  | HENDERSON CONSTRUCTION CO., INC.<br>FREDERICKSBURG, VA | 11 | \$313,266.00 |
| 2  | 144-91A | 91011043  | C820-076-983, C301 | Pippin Leeland Parking Lot<br>Fishes Williams County<br>Ball Community Parking Lot                 |   | AWARD  | HENDERSON CONSTRUCTION CO., INC.<br>FREDERICKSBURG, VA | 13 | \$990,511.00 |

5/16/91

Moved by Mr. Musselwhite, seconded by Mr. Wells,  
that

WHEREAS, in accordance with the requirements and schedules for implementing its program objectives, the Department has determined that in order to perform the activities to meet those objectives, it is necessary to supplement the staff of the Location and Design Division for the subsurface utility designating and subsurface utility locating (test hole) services, for a two year period, in the Culpeper, Fredericksburg, Northern Virginia, Staunton and Suffolk Districts; and

WHEREAS, in accordance with Department Policy and the Virginia Public Procurement Act, section 11-35 et seq., a firm proposal has been received from So-Deep, Inc., for said services; and

WHEREAS, careful review and consideration has been made of the scope of work and services required, and just compensation has been established for these services as set forth in the Memorandum of Agreement;

NOW, THEREFORE, BE IT RESOLVED, that the Board authorize the execution of the agreement with the firm of So-Deep, Inc., for services for two years, with total fees not to exceed \$2,000,000.00.

Motion carried.

Moved by Mr. Musselwhite, seconded by Mr. Wells,  
that

WHEREAS, in accordance with the requirements and schedules for implementing its program objectives, the Department has determined that in order to perform the activities to meet those objectives, it is necessary to supplement the staff of the Location and Design Division for the subsurface utility designating and subsurface utility locating (test hole) services, for a two year period, in the Bristol, Lynchburg, Richmond, and Salem Districts; and

WHEREAS, in accordance with Department Policy and the Virginia Public Procurement Act, section 11-35 et seq., a firm proposal has been received from Spectra Group, Inc., for said services; and

5/16/91

WHEREAS, careful review and consideration has been made of the scope of work and services required, and just compensation has been established for these services as set forth in the Memorandum of Agreement;

NOW, THEREFORE, BE IT RESOLVED, that the Board authorize the execution of the Agreement with the firm of Spectra Group, Inc. for services for two years, with total fees not to exceed \$1,500,000.00.

Motion carried.

Moved by Mr. Waldman, seconded by Mr. Warner, that

WHEREAS, in accordance with its needs and schedules for implementing its programs objectives, the Department has determined that in order to perform the necessary activities to meet those objectives for engineering services on project: 0000-100-110, PE101, B604, Replacement of the Richmond Fredericksburg and Potomac Railroad (RF&P) bridge over Braddock Road located in the Northern Virginia District, City of Alexandria, it is necessary to supplement its Structure and Bridge Division staff; and

WHEREAS, in accordance with Department Policy and State Procurement procedures a firm proposal has been received from Ralph Whitehead & Associates to perform the engineering services; and

WHEREAS, careful review and consideration has been made of the scope of work and services required and just compensation has been established for these services and are set forth in the Memorandum of Agreement.

NOW, THEREFORE, BE IT RESOLVED, that the Board authorize the execution of the Agreement with the firm of Ralph Whitehead & Associates which establishes a compensation of \$567,745.00 for services and expenses plus a net fee of \$50,450.00 making the maximum total compensation not to exceed \$618,195.00.

Motion carried.



5/16/91

Moved by Mr. Walls, seconded by Mr. Candler, that

WHEREAS, in accordance with the statutes of the Commonwealth of Virginia and policies of the Commonwealth Transportation Board, a Location Public Hearing was held in the Halifax County Senior High School on December 4, 1990, at 7:00 p.m., for the purpose of considering the proposed location of Route 501 (Broad Street Extension) from the intersection of Third Street to 0.1 mile south of the intersection of Cavalier Boulevard in the City of South Boston, State Project 0501-130-102, PE-101; Federal Project F-41-1 ( ); and

WHEREAS, proper notice was given in advance, and all those present were given a full opportunity to express their opinions and recommendations for or against the proposed project as presented, and their statements being duly recorded; and

WHEREAS, the economic, social, and environmental effects of the proposed project have been examined and given proper consideration, and this evidence, along with all other, has been carefully reviewed;

NOW, THEREFORE, BE IT RESOLVED, that Alternative Line B be approved in accordance with the plan as proposed and presented at the said Location Public Hearing by the Department's Engineers.

Motion carried.

Moved by Mr. Smalley, seconded by Dr. Thomas, that

WHEREAS, in accordance with the statutes of the Commonwealth of Virginia and policies of the Commonwealth Transportation Board, a Location and Design Public Hearing was held in the Jerry Hines National Guard Armory on January 31, 1991, at 7:00 p.m. for the purpose of considering the proposed location and design of Route 39 from 1.74 miles west of Route 11 to the intersection of Route 11 in Rockbridge County, State Project 0039-081-112, C-501; and

5/16/91

WHEREAS, proper notice was given in advance, and all those present were given a full opportunity to express their opinions and recommendations for or against the proposed project as presented, and their statements being duly recorded; and

WHEREAS, the economic, social, and environmental effects of the proposed project have been examined and given proper consideration, and this evidence, along with all other, has been carefully reviewed;

NOW, THEREFORE, BE IT RESOLVED, that the location and major design features of this project be approved in accordance with a reduction in the scope of the plan amended to eliminate and/or reduce impacts to abutting properties as a result of comments received through the public hearing process. The significant amendments are as follows:

- o Project would begin 200 feet south of the Virginia Equine Center's north property line and terminate just north of Route 750.
- o Reduce the four-lane divided roadway to a two-lane design with left and right turn lanes for the Horse Center entrance.
- o Provide bicycle lanes within the new terminus and improve the Route 39/11 Intersection.

Motion carried.

Moved by Mr. Koffler, seconded by Mr. Malbon, that

WHEREAS, in accordance with the statutes of the Commonwealth of Virginia and policies of the Commonwealth Transportation Board, a Combined Location and Design Public Hearing was held in the Virginia Beach Fire Training Center on November 8, 1990, at 7:00 p.m. for the purpose of considering the proposed location and design of Pacific Avenue/General Booth Boulevard from 0.11 mile north of Norfolk Avenue to 0.01 mile north of Harbour Point (Bridge and Approaches over Rudee Inlet) in the City of Virginia Beach, State Project U000-134-119, C-501; and

WHEREAS, proper notice was given in advance, and all those present were given a full opportunity to express their opinions and recommendations for or against the proposed project as presented, and their statements being duly recorded; and

5/16/91

WHEREAS, the economic, social, and environmental effects of the proposed project have been examined and given proper consideration, and this evidence, along with all other, has been carefully reviewed;

NOW, THEREFORE, BE IT RESOLVED, that the location and major design features of this project be approved in accordance with the plan as proposed and presented at the said Location and Design Public Hearing by the Department's Engineers with modifications to include:

- o Plans developed by the City to replace the lost parking spaces at the Holiday Travel-L-Park parking lot.
- o Shift location of Norfolk Avenue southward to improve its intersection with Ninth Street.
- o Provisions for drainage and an entrance on Tenth Street for an adjacent property.
- o 35 feet of vertical clearance for the proposed northbound lanes structure.

Motion carried.

Moved by Mr. Waldman, seconded by Mr. Warner, that

WHEREAS, in accordance with the statutes of the Commonwealth of Virginia and policies of the Commonwealth Transportation Board, a Location and Design Public Hearing was held in the Oak Hill Elementary School on November 7, 1990, at 7:30 p.m. for the purpose of considering the proposed location and design of Route 608 (West Ox Road) from 0.17 mile south of Horsepen Run to 0.25 mile north of Horsepen Run (Bridge and Approaches over Horsepen Run) in Fairfax County, State Project 0608-029-265, C-501, B-677; Federal Project BR-M-5401( ); and

WHEREAS, proper notice was given in advance, and all those present were given a full opportunity to express their opinions and recommendations for or against the proposed project as presented, and their statements being duly recorded; and

5/16/91

WHEREAS, the economic, social, and environmental effects of the proposed project have been examined and given proper consideration, and this evidence, along with all other, has been carefully reviewed;

NOW, THEREFORE, BE IT RESOLVED, that the location and major design features of this project be approved in accordance with the plan as proposed and presented at the said Location and Design Public Hearing by the Department's Engineers with the following modifications:

- o Provide a box culvert of sufficient length to accommodate the ultimate four-lane typical section.
- o Grade entire project to accommodate the ultimate four-lane design.
- o Construct the bicycle trail in its ultimate location which will provide the desired separation from the initial design as requested by the citizens.

Motion carried.

Moved by Mr. Malbon, seconded by Mr. Hoffer, that

WHEREAS, in accordance with the statutes of the Commonwealth of Virginia and policies of the Commonwealth Transportation Board, a Combined Location and Design Public Hearing was held in the York High School, Yorktown, Virginia, on March 29, 1990, at 7:00 p.m. for the purpose of considering the proposed location and major design features of Route 634 (Old York-Hampton Road) from 0.05 mile east of the intersection of Route 17 to the intersection of Route 704 (Cook Road) in York County, State Project 0634-099-121, C-501, C-502; Federal Project N-5122; and

WHEREAS, proper notice was given in advance, and all those present were given a full opportunity to express their opinions and recommendations for or against the proposed project as presented, and their statements being duly recorded; and

5/16/91

WHEREAS, the economic, social, and environmental effects of the proposed project have been examined and given proper consideration, and this evidence, along with all other, has been carefully reviewed;

NOW, THEREFORE, BE IT RESOLVED, that the location and major design features of this project be approved in accordance with the plan as proposed and presented at the said Location and Design Public Hearing by the Department's Engineers.

Motion carried.

Moved by Mr. Smalley, seconded by Dr. Thomas, that

WHEREAS, in accordance with current policies and procedures a notice of willingness to hold a combined Location and Design Public Hearing was posted for Route 257 from 0.129 miles northwest of the intersection of Route 11 to the intersection of the west ramps of Route I-81 in the County of Rockingham, State Project 0257-082-106, C-502, B-601; and

WHEREAS, the location and major design features of this project were approved as shown on the plans on January 31, 1991; and

WHEREAS, to protect the integrity of the corridor and the industrial interchange at Interstate Route 81 and control the development between Route 11 and Interstate Route 81 it is necessary to declare new Route 257 a limited access facility.

NOW, THEREFORE, BE IT RESOLVED, that new Route 257 be declared a Limited Access Highway between the points delineated on the plans for Project 0257-082-106, C-502, B-601 in accordance with Article 4, Chapter 1, Title 33.1 of the 1950 Code of Virginia, as amended and in accordance with Commonwealth Transportation Board Policy.

Motion carried.

Moved by Dr. Thomas, seconded by Mr. Musselwhite, that

WHEREAS, in connection with Route 29 (formerly Route 14), State Highway Project 577-C, the Commonwealth acquired certain lands from W. V. Gray

5/16/91

and Hattie A. Gray by deed dated April 7, 1930, recorded in Deed Book 205, Page 534 in the Office of the Clerk of the Circuit Court of Pittsylvania County; and

WHEREAS, the Commonwealth Transportation Commissioner has certified in writing that the land lying northwest of and adjacent to the northwest normal right of way limits of Route 29, from a point approximately 118 feet opposite approximate Station 274+66 (Route 29 centerline, Project 0029-071-109, RW-204) to a point approximately 162 feet opposite approximate Station 275+55 (Route 29 centerline, Project 0029-071-109, RW-204), containing 0.047 acre, more or less, does not constitute a section of the public road and is deemed by him no longer necessary for the uses of the State Highway System; and

WHEREAS, the adjacent landowners have requested that the Commonwealth convey the land, so acquired, so that the adjacent land may be fully developed.

NOW, THEREFORE, the conveyance of the said land, in accordance with the provisions of Section 33.1-149 of the Code of Virginia (1950), as amended, is approved and the Commonwealth Transportation Commissioner is hereby authorized to execute in the name of the Commonwealth a deed, without warranty, conveying same to the adjacent landowners of record for a consideration satisfactory to the Department, subject to such restrictions as may be deemed appropriate.

Motion carried.

Moved by Dr. Thomas, seconded by Mr. Musselwhite, that

WHEREAS, in connection with Route 128, State Highway Project 0128-118-101, RW-301, the Commonwealth acquired certain lands from Dorothy Hughes by deed dated June 13, 1973, recorded in Deed Book 482, Page 497; from Henry K. Dodson and Mary E. Dodson by deed dated June 1, 1973, recorded in Deed Book 482, Page 503; from Pyrofax Gas Corporation, a Delaware Corporation by instrument dated August 23, 1973, recorded in Deed Book 483, Page 656; and from Thomas L. Phillips, et als by instrument dated August 29, 1975, recorded in Deed Book 504, Page 274. These instruments are recorded in the Office of the Clerk of the Circuit Court of the City of Lynchburg; and

5/16/91

WHEREAS, under Project U000-118-112, RW-201, Route 460 and Candler's Mountain Road were altered and reconstructed; and

WHEREAS, Lynchburg City Council, on May 22, 1990, abandoned a portion of Relocated WBL Candler's Mountain Road; and

WHEREAS, the Commonwealth Transportation Commissioner has certified in writing that the land containing 1.465 acres, more or less, comprising a portion of old Relocated WBL Candler's Mountain Road, lying south of the south proposed right of way and limited access limits of Route 128 does not constitute a section of the public road and is deemed by him no longer necessary for the uses of the State Highway System; and

WHEREAS, Candler's Station Limited Partnership has dedicated the right of way needed for the new ramp and has requested that the old right of way be conveyed to it.

NOW, THEREFORE, in accordance with the provisions of Section 33.1-149 of the Code of Virginia (1950), as amended, the conveyance of the land, so certified, is hereby approved and the Commonwealth Transportation Commissioner is authorized to execute a deed in the name of the Commonwealth conveying same for a consideration satisfactory to the State Right of Way Engineer, subject to such restrictions as may be deemed appropriate.

Motion carried.

Moved by Dr. Thomas, seconded by Mr. Nusselwhite, that

WHEREAS, in connection with Route 635, State Highway Project 0635-036-130, M-502, the Commonwealth acquired certain lands from Clayton F. Gause and Clara A. Gause by deed dated October 3, 1988, recorded in Deed Book 360, Page 260; from Heirs at Law of William Tabb by instrument dated October 20, 1988, recorded in Deed Book 358, Page 468; from Samuel Ray Keisler and Anisa Saad Keisler by deed dated November 1, 1988, recorded in Deed Book 361, Page 625; and from John Sears King by instrument dated November 10, 1988,

5/16/91

recorded in Deed Book 359, Page 677. These instruments are recorded in the Office of the Clerk of the Circuit Court of Gloucester County; and

WHEREAS, Route 635 has been altered and a new road has been constructed and approved and the new road serves the same citizens as the old road; and

WHEREAS, by resolution passed by Gloucester County Board of Supervisors dated January 15, 1991, a section of Route 635 was abandoned effective March 21, 1991; and

WHEREAS, the Commonwealth Transportation Commissioner has certified in writing that the land comprising 0.13 acre, more or less, land, and comprising a portion of old Route 635, lying southeast of and adjacent to the southeast proposed right of way line of Route 635, from a point approximately 30 feet opposite approximate Station 62+40 (Route 635 office revised centerline) to a point approximately 25 feet opposite approximate Station 66+06 (Route 635 office revised centerline) does not constitute a section of the public road and is deemed by him no longer necessary for the uses of the Secondary System of State Highways; and

WHEREAS, Cecil M. and Lorene H. Booker have requested that the Commonwealth convey to them the excess land that is no longer required as part of a negotiated settlement.

NOW, THEREFORE, in accordance with the provisions of Section 33.1-154 of the Code of Virginia (1950), as amended, the Commonwealth Transportation Commissioner is hereby authorized to execute a deed, without warranty, in the name of the Commonwealth conveying same to the adjoining landowner of record for a consideration satisfactory to the State Right of Way Engineer, subject to such restrictions as may be deemed appropriate.

Motion carried.

Moved by Dr. Thomas, seconded by Mr. Musselwhite, that

WHEREAS, in connection with Route 29, State Highway Project 0029-108-104, RW-201, the Commonwealth acquired certain lands from W. H. Burruss, Jr. and Sharon C. Burruss by deed dated September 29, 1982,



5/16/91

recorded in Deed Book 666, Page 486; and in conjunction with State Highway Project 1199-C3, from P. L. Booth, et al by deed dated February 6, 1942, recorded in Deed Book 254, Page 94 and from Pittsylvania County School Board by deed dated March 27, 1941, recorded in Deed Book 250, Page 587. These deeds are recorded in the Office of the Clerk of the Circuit Court of the City of Danville; and

WHEREAS, the Commonwealth Transportation Commissioner has certified in writing that the land containing approximately 3,700 square feet, more or less, and lying west of the west normal right of way limits of Route 29, from a point approximately 40 feet opposite approximate Station 227+78 (survey and construction centerline) to a point approximately 40 feet opposite approximate Station 228+25 (survey and construction centerline) does not constitute a section of the public road and is deemed by him no longer necessary for the uses of the State Highway System; and

WHEREAS, in order to more fully develop the adjacent lands, the adjoining landowner has requested that the excess right of way be conveyed to him.

NOW, THEREFORE, in accordance with the provisions of Section 33.1-149 of the Code of Virginia (1950), as amended, the conveyance of the lands, so certified, is hereby approved and the Commonwealth Transportation Commissioner is authorized to execute in the name of the Commonwealth a deed, conveying same to the adjoining landowner of record for a consideration satisfactory to the State Right of Way Engineer, subject to such restrictions as may be deemed appropriate.

Motion carried.

Moved by Dr. Thomas, seconded by Mr. Musselwhite, that

WHEREAS, in connection with Route 600, State Highway Project 0600-081-131, C-501, the Commonwealth acquired certain lands from Dyle Taylor Lockridge, et al by deed dated April 12, 1968, recorded in Deed Book 303, Page 471 in the Office of the Clerk of the Circuit Court of Rockbridge County; and

5/16/91

WHEREAS, the Commonwealth Transportation Commissioner has certified in writing that the lands containing 0.14 acre, more or less, and lying east of and adjacent to the east normal right of way limits of Route 600, from a point approximately 35 feet opposite approximate Station 308+25 (Route 600 survey centerline) to a point approximately 50 feet opposite approximate Station 310+40 (Route 600 survey centerline) does not constitute a section of the public road and is deemed by him no longer necessary for the uses of the Secondary System of State Highways; and

WHEREAS, in order to more fully develop the adjacent lands, the adjacent landowner has requested that the excess lands so acquired lying adjacent to his property be conveyed.

NOW, THEREFORE, in accordance with the provisions of Section 33.1-154 of the Code of Virginia (1950), as amended, the conveyance of the said land, so certified, is approved and the Commonwealth Transportation Commissioner is authorized to execute in the name of the Commonwealth a deed to the adjoining landowner of record for a consideration acceptable to the State Right of Way Engineer, subject to such restrictions as may be deemed appropriate.

Motion carried.

Moved by Dr. Thomas, seconded by Mr. Mussalwhite, that

WHEREAS, in connection with Route 42, State Highway Project 0042-082-105, RW-201, the Commonwealth acquired certain lands from Daniel W. Brubaker and Nancy L. Brubaker by deed dated March 9, 1969, recorded in Deed Book 369, Page 131 in the Office of the Clerk of the Circuit Court of Rockingham County; and

WHEREAS, the Commonwealth Transportation Commissioner has certified in writing that the land containing 0.03 acre, more or less, and lying northwest of and adjacent to the northwest normal right of way limits of Route 42, from a point approximately 19 feet opposite approximate Station 302+60 (Route 42 Prop. SBL centerline) to a point approximately 19 feet opposite approximate Station 303+00 (Route 42 Prop. SBL centerline) does not

5/16/91

constitute a section of the public road and is deemed by him no longer necessary for the uses of the State Highway System; and

WHEREAS, in order to meet set back requirements for development of the adjacent property, the adjoining landowner has requested that the excess right of way be conveyed.

NOW, THEREFORE, in accordance with the provisions of Section 33.1-149 of the Code of Virginia (1950), as amended, the conveyance of the said land, so certified, is approved and the Commonwealth Transportation Commissioner is hereby authorized to execute a deed, without warranty, conveying same to the adjoining landowner of record for a consideration satisfactory to the State Right of Way Engineer, subject to such restrictions as may be deemed appropriate.

Motion carried.

Moved by Dr. Thomas, seconded by Mr. Musselwhite, that

WHEREAS, in connection with Route 58, State Highway Project 6058-083-104, RW-202, the Commonwealth acquired certain lands from E. A. King and Amney King by instrument dated June 17, 1970, recorded in Deed Book 219, Page 464 in the Office of the Clerk of the Circuit Court of Russell County; and

WHEREAS, the Commonwealth Transportation Commissioner has certified in writing that the land containing approximately 0.54 acre, more or less, and lying south of the south normal right of way limits of Route 58, from a point approximately 65 feet opposite approximate Station 481+75 (Route 58 centerline) to a point approximately 65 feet right of approximate Station 484+48 (Route 58 centerline) does not constitute a section of the public road and is deemed by him no longer necessary for the uses of the State Highway System; and

WHEREAS, in order to more fully develop the adjacent lands, the adjoining landowners have requested that the excess land, so acquired, be conveyed to them.

5/16/91

NOW, THEREFORE, in accordance with the provisions of Section 33.1-149 of the Code of Virginia (1950), as amended, the conveyance of the land, so certified, is hereby approved and the Commonwealth Transportation Commissioner is authorized to execute in the name of the Commonwealth a deed, conveying same to the adjoining landowners of record for a consideration satisfactory to the State Right of Way Engineer, subject to such restrictions as may be deemed appropriate.

Motion carried.

Moved by Dr. Thomas, seconded by Mr. Musselwhite, that

WHEREAS, in connection with Route 60, State Highway Project 658F, the Commonwealth acquired certain lands from John H. Boatwright, Special Commissioner in the chancery suit of Johnson, etc. vs. George Shepard's Administrator, et als by deed dated May 4, 1942, recorded in Deed Book 41, Page 483 in the Office of the Clerk of the Circuit Court of Buckingham County; and

WHEREAS, the Commonwealth Transportation Commissioner has certified in writing that the land containing 1.0 acre, more or less, and lying north of and adjacent to the north normal right of way limits of Route 60, from a point approximately 30 feet opposite approximate Station 86+15 (WBL centerline, Route 60, Project 0060-014-101, RW-201) to a point approximately 40 feet opposite approximate Station 88+02 (WBL centerline, Route 60, Project 0060-014-101, RW-201) does not constitute a section of the public road and is deemed by him no longer necessary for the uses of the State Highway System; and

WHEREAS, in order to more fully develop the adjacent land, the adjacent landowner has requested that the excess land, so acquired, be conveyed to her.

NOW, THEREFORE, the conveyance of the said land in accordance with the provisions of Section 33.1-149 of the Code of Virginia (1950), as amended, is approved and the Commonwealth Transportation Commissioner is hereby authorized to execute in the name of the Commonwealth a deed, without warranty, conveying same to the adjacent landowner of record for

5/16/91

a consideration satisfactory to the Department, subject to such restrictions as may be deemed appropriate.

Motion carried.

Moved by Dr. Thomas, seconded by Mr. Musselwhite, that

WHEREAS, in connection with Route 81, State Highway Project 0081-086-003, RW-1, the Commonwealth acquired certain lands from Arnold E. Speer and Mary D. Speer by deed dated July 31, 1959, recorded in Deed Book 163, Page 456; from Charles F. Jackson and Hazel C. Jackson by deed dated July 31, 1959, recorded in Deed Book 163, Page 444; and from Nelly C. Preston by deed dated July 22, 1959, recorded in Deed Book 166, Page 99. These deeds are recorded in the Office of the Clerk of the Circuit Court of Smyth County; and

WHEREAS, the Commonwealth is the apparent owner of the Old Virginia Turnpike; and

WHEREAS, under Project 0081-086-003, RW-1, Route 11 was relocated and the new location serves the same citizens as the old location; and

WHEREAS, the old location of Route 11, south of the new location from Station 263+20 to Station 265+75 was abandoned, effective March 21, 1991; and

WHEREAS, the Commonwealth Transportation Commissioner has certified in writing that the land containing approximately 0.40 acre, more or less, and lying on the west side of Route 11, from a point approximately 40 feet opposite approximate Station 263+20 (Rel. Route 11 centerline) to a point approximately 40 feet right of approximate Station 265+75 (Rel. Route 11 centerline) does not constitute a section of the public road and is deemed by him no longer necessary for the uses of the State Highway System; and

WHEREAS, in order to more fully develop the adjacent lands, the adjoining landowners have requested that the excess lands so acquired by conveyed to them.

NOW, THEREFORE, in accordance with the provisions of Section 33.1-149 of the Code of Virginia (1950), as amended, the conveyance of the lands, so certified, is

5/16/91

hereby approved and the Commonwealth Transportation Commissioner is authorized to execute in the name of the Commonwealth a deed, conveying same to the adjoining landowners of record for a consideration satisfactory to the State Right of Way Engineer, subject to such restrictions as may be deemed appropriate.

Motion carried.

Moved by Dr. Thomas, seconded by Mr. Musselwhite, that

WHEREAS, in connection with Route 606, State Highway Project 0606-044-183, C-502, the Commonwealth acquired certain lands from Jimmie Ray Lawson and Linda A. Lawson by deed dated May 8, 1986, recorded in Deed Book 419, Page 475 in the Office of the Clerk of the Circuit Court of Henry County; and

WHEREAS, in connection with Route 606, the Commonwealth is the apparent owner of right of way acquired by dedication from A. L. Self Subdivision; and

WHEREAS, the Commonwealth Transportation Commissioner has certified in writing that the parcel of land containing approximately 0.24 acre, more or less, lying southwest of and adjacent to the southwest normal right of way limits of Route 606, from a point approximately 25 feet opposite approximate Station 84+17 (Route 606 centerline) to a point approximately 25 feet opposite approximate Station 11+50 (Route 671 centerline) does not constitute a section of the public road and is deemed by him no longer necessary for the uses of the Secondary System of State Highways; and

WHEREAS, in order to more fully develop the adjacent lands, the adjacent landowners have requested that the excess land, so acquired, lying adjacent to their property be conveyed.

NOW, THEREFORE, in accordance with the provisions of Section 33.1-154 of the Code of Virginia (1950), as amended, the conveyance of the said land, so certified, is approved and the Commonwealth Transportation Commissioner is hereby authorized to execute in the name of the Commonwealth deeds without warranty conveying same to the adjoining landowners of

5/16/91

record for consideration satisfactory to the State Right of Way Engineer, subject to such restrictions as may be deemed appropriate.

Motion carried.

Moved by Dr. Thomas, seconded by Mr. Musselwhite, that

WHEREAS, the Commonwealth is the apparent owner of old Route 610 in Prince William County; and

WHEREAS, Route 610 was relocated and the new location serves the same citizens as the old location; and

WHEREAS, the old location of Route 610 was abandoned by the Board of Supervisors of Prince William County at its meeting of March 29, 1977, effective August 30, 1977; and

WHEREAS, the Commonwealth Transportation Commissioner has certified in writing that the parcel of land containing 0.05 acre, more or less, located in Prince William County comprising a portion of old Route 610, adjacent to the lands owned by Robert Paterini and Susan Paterini does not constitute a section of the public road and is deemed by him no longer necessary for the uses of the Secondary System of State Highways; and

WHEREAS, in order that the adjacent lands may be more fully developed, the adjoining landowners have requested that the excess right of way be conveyed.

NOW, THEREFORE, in accordance with the provisions of Section 33.1-154 of the Code of Virginia (1950), as amended, the conveyance of the said land, so certified, to the adjoining landowners is approved and the Commonwealth Transportation Commissioner is hereby authorized to execute in the name of the Commonwealth a quitclaim deed conveying same for a consideration satisfactory to the State Right of Way Engineer, subject to such restrictions as may be deemed appropriate.

Motion carried.

5/16/91

Moved by Dr. Thomas, seconded by Mr. Musselwhite, that

WHEREAS, in connection with Route 613, State Highway Project 1382-10-11, the Commonwealth acquired certain lands from E. A. Jordan, et al by deed dated March 20, 1950, recorded in Deed Book 223, Page 191 in the Office of the Clerk of the Circuit Court of Rockingham County; and

WHEREAS, Route 613 has been altered and a new road has been constructed and approved, which the new road serves the same citizens as the old road; and

WHEREAS, by resolution passed by the Rockingham County Board of Supervisors dated December 27, 1977, sections of Route 613 were abandoned, effective January 24, 1978; and

WHEREAS, the Commonwealth Transportation Commissioner has certified in writing that the land lying south of and adjacent to the south normal right of way limits of Route 613, from a point approximately 30 feet opposite approximate Station 160+00 (Route 727 centerline) to a point approximately 40 feet opposite approximate Station 161+50 (Route 613 centerline), containing approximately 0.39 acre, more or less, does not constitute a section of the public road and is deemed by him no longer necessary for the uses of the Secondary System of State Highways; and

WHEREAS, the adjacent landowner has requested that the Commonwealth convey to him the excess land that is no longer required.

NOW, THEREFORE, in accordance with the provisions of Section 33.1-154 of the Code of Virginia (1950), as amended, the conveyance of the said land, so certified, to the adjoining landowner is approved and the Commonwealth Transportation Commissioner is hereby authorized to execute in the name of the Commonwealth a deed conveying same for a consideration satisfactory to the State Right of Way Engineer, subject to such restrictions as may be deemed appropriate.

Motion carried.



5/16/91

Moved by Dr. Thomas, seconded by Mr. Musselwhite,  
that

WHEREAS, in connection with Route 654, the Commonwealth acquired certain lands from Charles William Fiske and Elizabeth M. Fiske by deed recorded in Deed Book 415, Page 57 in the Office of the Clerk of the Circuit Court of Loudoun County; and

WHEREAS, the Commonwealth Transportation Commissioner has certified in writing that the right of way comprising a portion of old Route 654, containing approximately 29,127 square feet, more or less, land and shown on plat entitled "Plat Showing Property of Commonwealth of Virginia, Town of Leesburg, Loudoun County, Virginia, dated July 6, 1990" prepared by Paciulli, Simmons & Associates, Ltd. does not constitute a section of the public road and is deemed by him no longer necessary for the uses of the Secondary System of State Highways; and

WHEREAS, the section of Route 654, to be conveyed, was never constructed and has never been a part of the Secondary System; and

WHEREAS, the Town of Leesburg has requested that the excess right of way, so acquired, be conveyed to it as access to the NVRPA Bike Trail.

NOW, THEREFORE, the conveyance of the said parcel of land, so certified, in accordance with the provisions of Section 33.1-154 of the Code of Virginia (1950), as amended, is approved and the Commonwealth Transportation Commissioner is hereby authorized to execute in the name of the Commonwealth a deed, without warranty, conveying same to the adjoining landowner of record for a consideration satisfactory to the State Right of Way Engineer, subject to such restrictions as may be deemed appropriate.

Motion carried.

Moved by Dr. Thomas, seconded by Mr. Musselwhite,  
that

WHEREAS, in connection with Route 1011, State Highway Project 1011-015-146, C-501, the Commonwealth acquired certain lands from Beirs at Law of H. E.

5/16/91

Cabell, deceased by instrument dated June 10, 1971, recorded in Deed Book 437, Page 400 and from Kermit R. Fitch, et al by deed dated May 6, 1971, recorded in Deed Book 439, Page 324. These instruments are recorded in the Office of the Clerk of the Circuit Court of Campbell County; and

WHEREAS, the Commonwealth Transportation Commissioner has certified in writing that the lands lying southwest of and adjacent to the southwest normal right of way limits of Route 1011, from a point approximately 35 feet opposite approximate Station 45+25 (Route 1011 field revised centerline) to a point approximately 30 feet opposite approximate Station 51+50 (Route 1011 field revised centerline), containing 0.635 acre, more or less, does not constitute a section of the public road and is deemed by him no longer necessary for the uses of the Secondary System of State Highways; and

WHEREAS, in order to more fully develop the adjacent lands, the City of Lynchburg has requested that the excess right of way be conveyed.

NOW, THEREFORE, the conveyance of the said land, in accordance with the provisions of Section 3.1-154 of the Code of Virginia (1950), as amended, is approved and the Commonwealth Transportation Commissioner is hereby authorized to execute in the name of the Commonwealth a deed conveying same to the adjacent landowner of record for a consideration satisfactory to the State Right of Way Engineer, subject to such restrictions as may be deemed appropriate.

Motion carried.

Moved by Dr. Thomas, seconded by Mr. Musselwhite, that

WHEREAS, the Commonwealth is the apparent owner of 29th Street South in the County of Arlington; and

WHEREAS, at its regular meeting held October 13, 1973, the County of Arlington vacated a portion of 29th Street South; and

WHEREAS, the Commonwealth Transportation Commissioner has certified in writing that the land containing 1,011 square feet, more or less, land, comprising the vacated portion of 29th Street South,

5/16/91

lying between I-95 (Shirley Memorial Highway) on the east and South Quincy Street on the west does not constitute a section of the public road and is deemed by him no longer necessary for the uses of the State Highway System; and

WHEREAS, in order to more fully develop the adjacent land, the adjacent developer has requested that a portion of 29th Street South be conveyed to him.

NOW, THEREFORE, in accordance with the provisions of Section 33.1-149 of the Code of Virginia (1950), as amended, the conveyance of the land, so certified, is hereby approved and the Commonwealth Transportation Commissioner is authorized to execute in the name of the Commonwealth a quitclaim deed conveying same to the adjacent landowner of record for a consideration satisfactory to the State Right of Way Engineer, subject to such restrictions as may be deemed appropriate.

Motion carried.

Moved by Mr. Smalley, seconded by Mr. Musselwhite, that

WHEREAS, Section 33.1-221 of the Code of Virginia provides a fund to "...be expended by the Board for constructing, reconstructing, maintaining or improving access roads within counties, cities and towns to industrial sites on which manufacturing, processing or other establishments will be built under firm contract or are already constructed and to publicly owned airports"; and

WHEREAS, on March 17, 1988, the Commonwealth Transportation Board allocated \$165,000 to provide access to Cellin Manufacturing, Inc., located in the Airport Industrial Park in Culpeper County, subject to certain contingencies; and

WHEREAS, the project was constructed at an actual cost of \$138,786; and

WHEREAS, documentation of eligible capital outlay well in excess of that required to fully justify the financing of this project's total cost from Industrial Access funding, has been submitted by Culpeper County; and

5/16/91

WHEREAS, the County has requested that this capital outlay be considered in determining the amount of Industrial Access Funds justified for Project 0786-023-181, N502.

NOW, THEREFORE, BE IT RESOLVED that this Board's action of March 17, 1988, is hereby amended to reduce the Industrial Access Fund allocation for this project to \$138,786 and that the balance of the original allocation (\$26,214) be returned to the Industrial Access Fund.

BE IT FURTHER RESOLVED that this allocation shall be subject to the contingencies prescribed by this Board's resolution of March 17, 1988, with the exception that the time limit set forth in contingency #2 by which eligible industrial development must either be in operation or under firm contract shall be extended one year to March 17, 1991.

Motion carried.

Moved by Mr. Smalley, seconded by Mr. Musselwhite, that

WHEREAS, Section 33.1-221 of the Code of Virginia provides a fund to "...be expended by the Board for constructing, reconstructing, maintaining or improving access roads within counties, cities and towns to industrial sites on which manufacturing, processing or other establishments will be built under firm contract or are already constructed and to publicly owned airports"; and

WHEREAS, the Hanover County Board of Supervisors has, by resolution, requested Industrial Access Funds to serve the facilities of Richmond Newspapers, Inc., located off Route 301 in Hanover County, and said access is estimated to cost \$780,000; and

WHEREAS, it appears that this request falls within the intent of Section 33.1-221 and complies with the provisions of the Commonwealth Transportation Board's policy on the use of Industrial Access Funds.

NOW, THEREFORE, BE IT RESOLVED, that \$333,000 (\$300,000 unmatched and \$33,000 matched) of the 1990-91 Fiscal Year Industrial Access Fund be allocated to provide adequate access to Richmond Newspapers, Inc., located in Hanover County, Project 1000-042-273, N501, contingent upon:

5/16/91

1. All necessary right of way and utility adjustments being provided at no cost to the Commonwealth;
2. Documentary evidence being submitted that this firm has entered into a firm contract to construct and operate its facilities at the proposed site and has expended or is under firm contract to expend at least \$3,660,000 for eligible capital outlay; and
3. The execution of an appropriate contractual agreement between the Hanover County Board of Supervisors (County) and the Virginia Department of Transportation (VDOT), to provide for
  - a. The design, administration, and construction of this project;
  - b. The County contributing the required \$33,000 of matching funds; and
  - c. The County bearing any ineligible project costs and all eligible project costs in excess of \$366,000.

Motion carried.

Moved by Mr. Smalley, seconded by Mr. Musselwhite, that

WHEREAS, Section 33.1-221 of the Code of Virginia provides a fund to "...be expended by the Board for constructing, reconstructing, maintaining or improving access roads within counties, cities and towns to industrial sites on which manufacturing, processing or other establishments will be built under firm contract or are already constructed and to publicly owned airports"; and

WHEREAS, the Rockbridge County Board of Supervisors has, by resolution, requested Industrial Access Funds to serve the facilities of W. R. Deacon & Sons Timber, Inc., located off Route 675 in Rockbridge County, and said access is estimated to cost \$130,400; and

5/16/91

WHEREAS, it appears that this request falls within the intent of Section 33.1-221 and complies with the provisions of the Commonwealth Transportation Board's policy on the use of Industrial Access Funds.

NOW, THEREFORE, BE IT RESOLVED, that \$51,000 of the 1990-91 Fiscal Year Industrial Access Fund be allocated to provide adequate access to W. R. Deacon & Sons Timber, Inc., located in Rockbridge County, Project 0675-081-212, M501, contingent upon:

1. All necessary right of way and utility adjustments being provided at no cost to the Industrial Access Fund;
2. Documentary evidence being submitted that this firm has entered into a firm contract to construct and operate its facilities at the proposed site and has expended or is under firm contract to expend at least \$610,000 for eligible capital outlay;
3. All eligible project costs in excess of the amount of Industrial Access Funds authorized to this project and any ineligible costs being provided from Secondary construction allocations for Rockbridge County.

Motion carried.

Moved by Mr. Smalley, seconded by Mr. Wells, that

WHEREAS, in response to a formal request by the Greensville County Board of supervisors that Route 610 and Route 614 between Route 608 and Route 617 be considered for restriction of through truck traffic pursuant to the provisions of Section 46.2-809 (formerly Section 46.1-171.2) of the Code of Virginia, that mater has been carefully reviewed; and

WHEREAS, the Greensville County Board of Supervisors has conducted a public hearing on this restriction; and

WHEREAS, the routes in question traverse a predominantly non-commercial area; and

WHEREAS, a restriction on the proposed routes would not present any undue hardship; and

5/16/91

WHEREAS, proper notice was given by posting signs and publishing notices advising the public of the proposed restriction and requesting written comments; and

WHEREAS, careful consideration has been given to the recommendations received, the available alternate routes and the past practices of the Department;

NOW, THEREFORE, BE IT RESOLVED, that Route 610 and Route 614 between Route 608 and Route 617 be restricted to through truck traffic in accordance with Section 46.2-809 of the Code of Virginia.

Motion carried.

Moved by Mr. Smalley, seconded by Mrs. Kincheloe, that

WHEREAS, the Madison County and Orange County Boards of Supervisors, did each adopt a resolution by which this Commonwealth Transportation Board was petitioned and requested to designate the new bridge over the Rapidan River, on U. S. Route 15 linking Madison County and Orange County; and

WHEREAS, James Lawson Kemper was eulogized in the aforementioned resolutions as follows; and

WHEREAS, James Lawson Kemper was born in Madison County, Virginia, June 11, 1823; and

WHEREAS, he served admirably in the Virginia House of Delegates and was Speaker of the House; and

WHEREAS, he answered the call of duty in 1861 and served with honor and distinction in the Army of Northern Virginia rising to the rank of Major General; and

WHEREAS, he was the first freely elected Governor of Virginia following the reconstruction period; and

WHEREAS, he retired from public service and lived the remaining years of his life in Orange County where he is buried; and

WHEREAS, it is the desire of this Commonwealth Transportation Board to honor this prominent citizen;

5/16/91

NOW, THEREFORE, BE IT RESOLVED, that the Commonwealth Transportation Board, in accordance with the authority entrusted under Section 33.1-250 of the Code of Virginia, does hereby declare that the bridge as requested be named the James Lawson Kemper Memorial Bridge; and

BE IT FURTHER RESOLVED, that appropriate markers, as directed by the Department's Engineers, shall be placed calling attention to its designation.

Motion carried.

Moved by Mr. Bacon, seconded by Mr. Davies, that

WHEREAS, the Commonwealth Transportation Board is required by the Code of Virginia Section 33.1-12(9)(b) and (11) to set aside and allocate funds in the Transportation Trust Fund; and

WHEREAS, Section 33.1-23.1A requires the Board to allocate such amounts as it deems reasonable and necessary for the maintenance of roads on the interstate, primary and secondary systems; city street payments and payments to counties that have withdrawn from the Secondary System; and

WHEREAS, Section 33.1-23.1B requires the Board to allocate funds for construction on the Interstate, Primary, Secondary and Urban Systems; and

WHEREAS, the 1991 Appropriation Act, Chapter 723 enacted by the 1991 General Assembly requires that all mass transit funds be allocated by the Board in accordance with the statutory formula in Section 58.1-2425.E.3; and

WHEREAS, the 1991 Appropriation Act, Chapter 723 enacted by the 1991 General Assembly requires certain set asides and allocations; and

WHEREAS, Section 9-6.25 allows for the Board to review and comment on budget items not specifically enumerated to the Board by Statute.

NOW, THEREFORE, BE IT RESOLVED, that the Commonwealth Transportation Board has reviewed the Tentative FY 1991-92 Annual Budget and has made appropriate comments to the Commissioner for his consideration; and



5/16/91

BE IT FURTHER RESOLVED, by the Commonwealth Transportation Board that the recommended tentative allocations required by the various statutes and contained in the FY 1991-92 Annual Budget are approved.

Motion carried.

VIRGINIA DEPARTMENT OF TRANSPORTATION

T • E • N • T • A • T • I • V • E

FISCAL YEAR 1991-92  
ANNUAL BUDGET

---

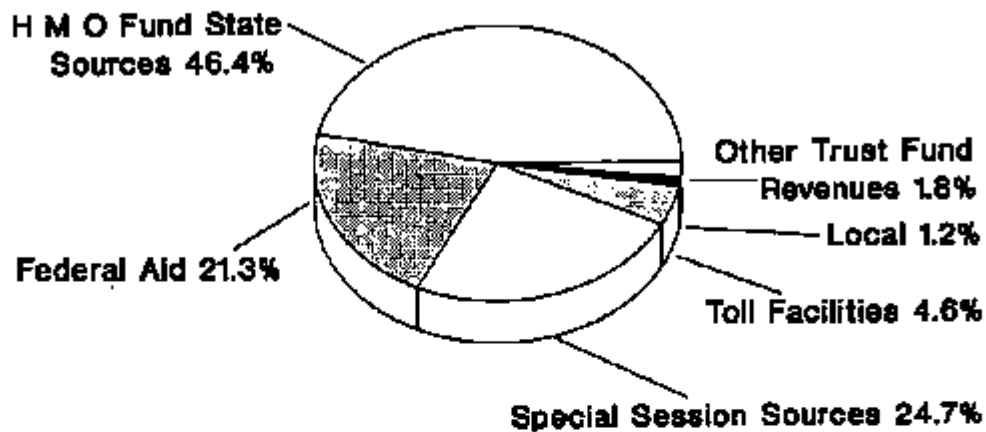
**TABLE OF CONTENTS**

---

|  | <b>PAGE</b> |
|--|-------------|
| <b>SUMMARY OF REVENUES AND ALLOCATIONS</b>                   | <b>5</b>    |
| Highway Maintenance and Operating Fund                       | <b>8</b>    |
| Transportation Trust Fund                                    | <b>10</b>   |
| <b>ESTIMATE OF REVENUES</b>                                  | <b>13</b>   |
| Highway Maintenance and Operating Fund                       | <b>14</b>   |
| Transportation Trust Fund                                    | <b>16</b>   |
| <b>RECOMMENDED ALLOCATION OF ESTIMATED REVENUES</b>          | <b>17</b>   |
| Highway Maintenance and Operating Fund                       | <b>18</b>   |
| Transportation Trust Fund                                    | <b>20</b>   |
| <b>DETAILED DISTRIBUTION OF 1986 SPECIAL SESSION REVENUE</b> | <b>23</b>   |
| <b>DETAILED DISTRIBUTION OF MASS TRANSIT PROGRAM</b>         | <b>27</b>   |
| <b>CAPITAL OUTLAY BUDGET</b>                                 | <b>29</b>   |
| <b>CALCULATION OF FUNDS AVAILABLE FOR TRANSFER</b>           | <b>31</b>   |
| <b>DETAILED DISTRIBUTION OF INDIRECT COST CALCULATION</b>    | <b>33</b>   |
| <b>DETAILED CONTRIBUTIONS TO GENERAL FUND</b>                | <b>35</b>   |
| <b>HIGHWAY CONSTRUCTION SUMMARY</b>                          | <b>37</b>   |
| <b>DETAIL OF BASIS POINT IMPACT ON INTEREST REVENUE</b>      | <b>41</b>   |
| <b>TOLL FACILITIES OPERATIONS</b>                            | <b>43</b>   |
| <b>DIVISION OF FLEET MANAGEMENT</b>                          | <b>51</b>   |
| <b>COMMONWEALTH TRANSPORTATION FUNDS DISTRIBUTION</b>        | <b>53</b>   |
| <b>FOOTNOTES</b>   | <b>57</b>   |

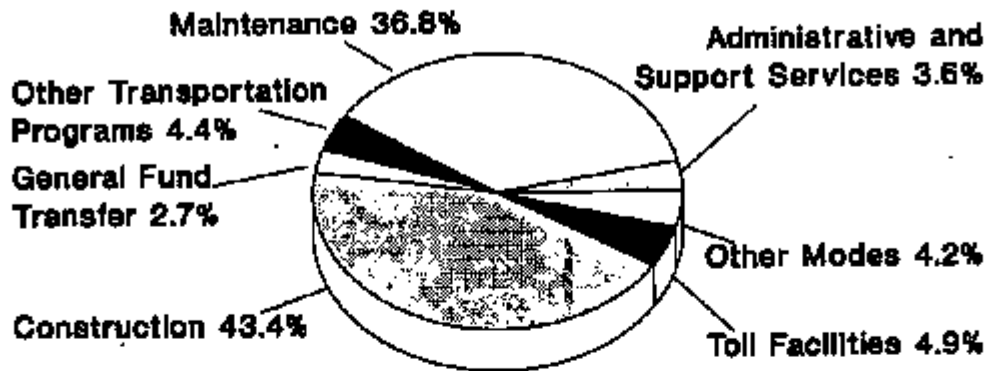
**SUMMARY OF REVENUES AND ALLOCATIONS**

**GRAND TOTAL ESTIMATE OF REVENUES  
HIGHWAY MAINTENANCE AND OPERATING FUND  
AND TRANSPORTATION TRUST FUND  
FISCAL YEAR 1991 - 92**



|  |                        |
|--|------------------------|
| <b>H M O FUND</b>                      |                        |
| State Sources                          | <b>\$846,747,000</b>   |
| Federal Aid                            | <b>388,668,000</b>     |
| Local Sources                          | <b>21,500,000</b>      |
| <b>TOTAL H M O FUND</b>                | <b>1,256,915,000</b>   |
| <br>                                   |                        |
| <b>TRANSPORTATION TRUST FUND</b>       |                        |
| Special Session Sources                | <b>450,659,900</b>     |
| Toll Facilities                        | <b>84,389,100</b>      |
| Other Trust Fund Revenues              | <b>32,288,100</b>      |
| <b>TOTAL TRANSPORTATION TRUST FUND</b> | <b>567,337,100</b>     |
| <br>                                   |                        |
| <b>GRAND TOTAL ESTIMATED REVENUES</b>  | <b>\$1,824,252,100</b> |

**GRAND TOTAL RECOMMENDED ALLOCATION OF REVENUES  
HIGHWAY MAINTENANCE AND OPERATING FUND  
AND TRANSPORTATION TRUST FUND  
FISCAL YEAR 1991 - 92**



**HMO FUND**

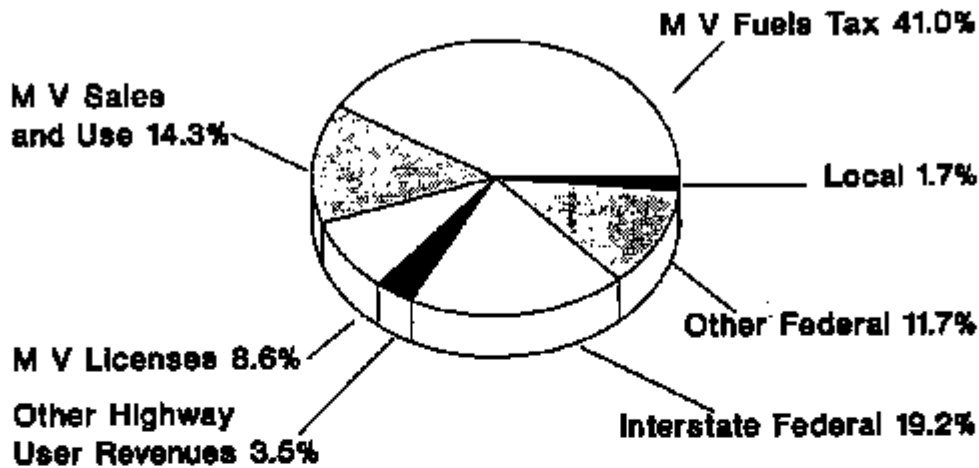
|  |                     |
|--|---------------------|
| <b>Administrative and Support Services</b> | <b>\$65,406,800</b> |
| <b>Other Transportation Programs</b>       | <b>55,626,300</b>   |
| <b>Highway System Maintenance</b>          | <b>671,163,400</b>  |
| <b>Support to Other State Agencies</b>     | <b>18,345,700</b>   |
| <b>General Fund Transfer</b>               | <b>40,825,000</b>   |
| <b>TOTAL H M O FUND</b>                    | <b>851,367,200</b>  |

**TRANSPORTATION TRUST FUND**

|   |                    |
|---|--------------------|
| <b>Highway Acquisition and Construction</b> | <b>791,802,300</b> |
| <b>Toll Facilities</b>                      | <b>89,218,800</b>  |
| <b>Mass Transit, Ports, and Airports</b>    | <b>77,221,500</b>  |
| <b>Capital Outlay</b>                       | <b>1,178,600</b>   |
| <b>Trust Fund Management</b>                | <b>4,416,400</b>   |
| <b>General Fund Transfer</b>                | <b>9,047,300</b>   |
| <b>TOTAL TRANSPORTATION TRUST FUND</b>      | <b>972,884,900</b> |

**GRAND TOTAL FUNDS ALLOCATED** **\$1,824,252,100**

**ESTIMATE OF REVENUES\***  
**HIGHWAY MAINTENANCE AND OPERATING FUND**  
**FISCAL YEAR 1991 - 92**



**STATE SOURCES**

|                                    |                      |
|------------------------------------|----------------------|
| <b>Fuel Tax</b>                    | <b>\$515,636,000</b> |
| <b>Motor Vehicle Sales and Use</b> | <b>178,931,000</b>   |
| <b>Motor Vehicle Licenses</b>      | <b>107,884,000</b>   |
| <b>Other Highway User Revenues</b> | <b>44,298,000</b>    |
| <b>TOTAL STATE SOURCES</b>         | <b>846,747,000</b>   |

**FEDERAL AID**

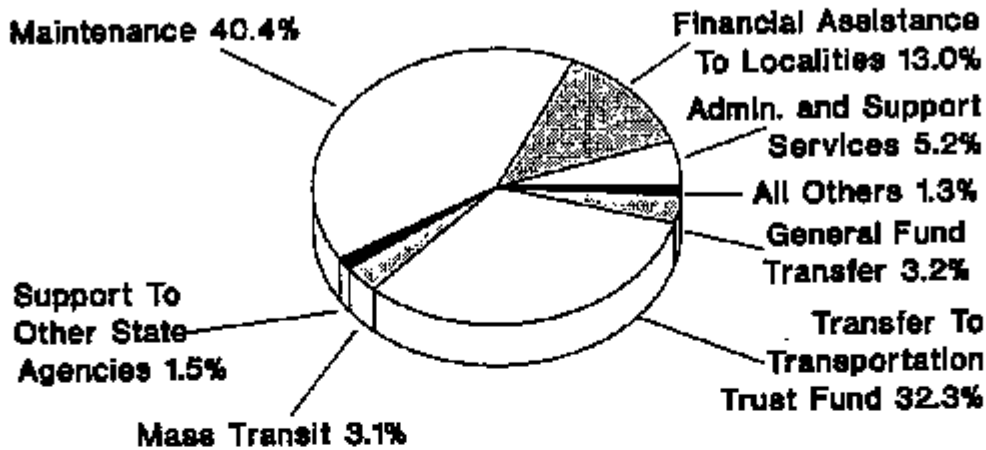
|                               |                    |
|-------------------------------|--------------------|
| <b>Interstate Federal Aid</b> | <b>241,681,000</b> |
| <b>Other Federal Aid</b>      | <b>146,987,000</b> |
| <b>TOTAL FEDERAL AID</b>      | <b>388,668,000</b> |

**OTHER SOURCES**

|                            |                   |
|----------------------------|-------------------|
| <b>Local Contributions</b> | <b>21,500,000</b> |
| <b>TOTAL OTHER SOURCES</b> | <b>21,500,000</b> |

**TOTAL ESTIMATED REVENUES** **\$1,256,915,000**

**RECOMMENDED ALLOCATION OF REVENUES \*  
HIGHWAY MAINTENANCE AND OPERATING FUND  
FISCAL YEAR 1991 - 92**

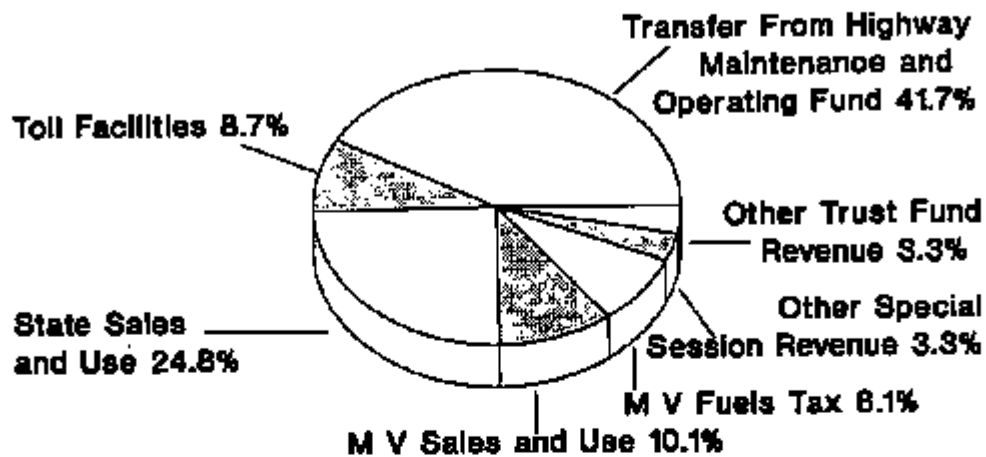


**OPERATING BUDGET**

|  |                        |
|--|------------------------|
| <b>Administrative and Support Services</b>   | <b>\$65,406,800</b>    |
| <b>Ground Transportation Regulation</b>      | <b>6,789,300</b>       |
| <b>Ground Transportation System</b>          |                        |
| <b>Planning and Research</b>                 | <b>2,667,700</b>       |
| <b>Highway System Maintenance</b>            | <b>508,395,900</b>     |
| <b>Ground Transportation System Safety</b>   | <b>6,102,100</b>       |
| <b>Financial Assistance to Localities</b>    |                        |
| <b>for Maintenance</b>                       | <b>162,767,500</b>     |
| <b>Mass Transit Assistance</b>               | <b>39,501,800</b>      |
| <b>Land Management</b>                       | <b>565,400</b>         |
| <b>TOTAL OPERATING BUDGET</b>                | <b>792,196,500</b>     |
| <b>Support to Other State Agencies</b>       | <b>18,345,700</b>      |
| <b>Transfer to General Fund</b>              | <b>40,825,000</b>      |
| <b>Transfer to Transportation Trust Fund</b> | <b>405,547,800</b>     |
| <b>TOTAL H M O FUNDS ALLOCATED</b>           | <b>\$1,256,915,000</b> |



**ESTIMATE OF REVENUES \*  
TRANSPORTATION TRUST FUND  
FISCAL YEAR 1991 - 92**



**SPECIAL SESSION SOURCES**

|                                      |                      |
|--------------------------------------|----------------------|
| State Sales and Use                  | <b>\$241,156,000</b> |
| M V Sales and Use                    | <b>98,325,000</b>    |
| M V Fuels                            | <b>79,265,000</b>    |
| Other Special Session Revenue        | <b>31,913,900</b>    |
| <b>TOTAL SPECIAL SESSION SOURCES</b> | <b>450,659,900</b>   |

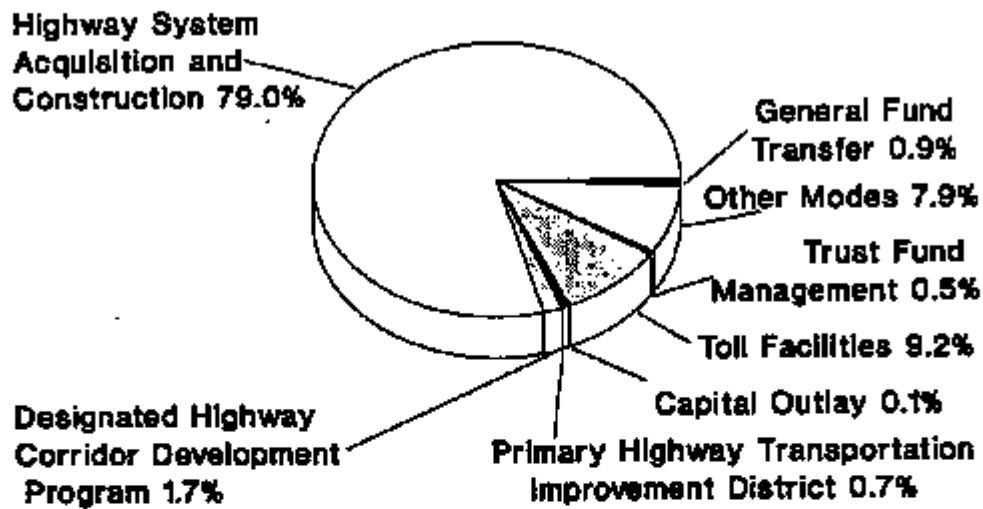
**EXISTING SOURCES**

|                               |                    |
|-------------------------------|--------------------|
| Toll Facilities               | <b>84,389,100</b>  |
| Transfer From H M O Fund      | <b>405,547,800</b> |
| <b>TOTAL EXISTING SOURCES</b> | <b>489,936,900</b> |

**OTHER TRUST FUND REVENUES**

|   |                      |
|---|----------------------|
| Primary Highway Transportation Improvement District Revenue | <b>6,514,000</b>     |
| U. S. Route 58 Corridor Development Fund                    | <b>16,274,100</b>    |
| Airport Assistance  | <b>9,500,000</b>     |
| <b>TOTAL ESTIMATED REVENUES</b>                             | <b>\$972,884,900</b> |

**RECOMMENDED ALLOCATION OF REVENUES ★  
TRANSPORTATION TRUST FUND  
FISCAL YEAR 1991 - 92**



|  |                      |
|--|----------------------|
| <b>Highway System Acquisition and Construction</b>         | <b>\$769,014,200</b> |
| <b>Designated Highway Corridor Development Program</b>     | <b>16,274,100</b>    |
| <b>Primary Highway Transportation Improvement District</b> | <b>6,514,000</b>     |
| <b>Toll Facility Operations</b>                            | <b>89,218,800</b>    |
| <b>Mass Transit Trust Fund</b>                             | <b>37,591,300</b>    |
| <b>Port Trust Fund</b>                                     | <b>19,230,500</b>    |
| <b>Capital Outlay</b>                                      | <b>1,178,600</b>     |
| <b>Airport Trust Fund</b>                                  | <b>10,899,700</b>    |
| <b>Trust Fund Management</b>                               | <b>4,416,400</b>     |
| <b>General Fund Transfer</b>                               | <b>9,047,300</b>     |
| <b>Airport Assistance</b>                                  | <b>9,500,000</b>     |
| <b>TOTAL FUNDS ALLOCATED</b>                               | <b>\$972,884,900</b> |

**ESTIMATE OF REVENUES**  
**HIGHWAY MAINTENANCE AND OPERATING FUND**  
**TRANSPORTATION TRUST FUND**

| <b>ESTIMATE OF REVENUES</b>                   |                      |                      |                      |
|---|----------------------|----------------------|----------------------|
| <b>YEAR 1991 - 92</b>                         |                      |                      |                      |
| <b>HIGHWAY MAINTENANCE AND OPERATING FUND</b> | <b>BUDGETED</b>      | <b>ESTIMATED</b>     | <b>INCREASE</b>      |
|   | <b>1990-91</b>       | <b>1991-92</b>       | <b>(DECREASE)</b>    |
| <b>STATE REVENUE SOURCES</b>                  |                      |                      |                      |
| Motor Vehicle Fuels Tax - DMV                 | \$518,255,000        | \$491,238,000        | (\$27,017,000)       |
| Motor Vehicle Fuels Tax - SOC                 | 23,725,000           | 24,398,000           | 673,000              |
| Fuel Tax - Total                              | 541,980,000          | 515,636,000          | (26,344,000)         |
| Motor Vehicle Sales and Use Tax               | 174,818,000          | 178,931,000          | 4,113,000            |
| International Registration Plan               | 33,276,000           | 34,261,000           | 985,000              |
| Motor Vehicle Licenses                        | 104,618,000          | 107,884,000          | 3,266,000            |
| Overload Permits                              | 2,122,000            | 1,891,000            | (231,000)            |
| Mileage Permit Fees - DDT                     | 275,000              | 400,000              | 125,000              |
| Hauling Permit Fees                           | 825,000              | 900,000              | 75,000               |
| Highway Permit Fees                           | 570,000              | 580,000              | 10,000               |
| Bridge And Ferry Tolls - Jamestown            | 710,000              | 575,000              | (135,000)            |
| Truck Weighing Fees                           | 130,000              | 130,000              | 0                    |
| Liquidated Damages - Weight Violations        | 3,777,000            | 3,489,000            | (288,000)            |
| Miscellaneous Revenue                         | 785,000              | 896,000              | 110,000              |
| Outdoor Advertising                           | 115,000              | 119,000              | 4,000                |
| Intersagency Revenue Transfer - SOC           | 1,876,000            | 755,000              | (1,121,000)          |
| <b>SUBTOTAL</b>                               | <b>866,187,000</b>   | <b>848,747,000</b>   | <b>(17,440,000)</b>  |
| Unallocated Balance                           | (8,328,300)          | 0                    | 8,328,300 1/         |
| <b>TOTAL STATE REVENUE SOURCES</b>            | <b>\$857,858,700</b> | <b>\$848,747,000</b> | <b>(\$9,111,700)</b> |

**ESTIMATE OF REVENUES  
FISCAL YEAR 1991 - 92**

| <b>HIGHWAY MAINTENANCE<br/>AND OPERATING FUND (cont.)</b>       | <b>BUDGETED<br/>1990-91</b> | <b>ESTIMATED<br/>1991-92</b> | <b>INCREASE<br/>(DECREASE)</b> |    |
|---|-----------------------------|------------------------------|--------------------------------|----|
| <b>FEDERAL AID</b>  |                             |                              |                                |    |
| Interstate Construction   | \$25,689,000                | \$117,915,000                | \$92,327,000                   | 2/ |
| Interstate Discretionary  | 21,757,000                  | 0                            | (21,757,000)                   |    |
| Interstate 4R   | 89,887,000                  | 71,220,000                   | 1,533,000                      |    |
| Interstate Total  | 117,033,000                 | 189,136,000                  | 72,103,000                     |    |
| Minimum Allocation  | 48,608,000                  | 59,940,000                   | 10,434,000                     |    |
| Additional Minimum Allocation                                   | 0                           | 890,000                      | 890,000                        | 3/ |
| Consolidated Primary  | 47,895,000                  | 49,411,000                   | 1,516,000                      |    |
| Rural Secondary   | 12,460,000                  | 13,197,000                   | 737,000                        |    |
| Urban System  | 14,122,000                  | 14,830,000                   | 608,000                        |    |
| Bridge Replacement  | 33,621,000                  | 30,969,000                   | (2,662,000)                    |    |
| Hazard Elimination  | 3,439,000                   | 3,542,000                    | 103,000                        |    |
| Rail - Highway Crossings  | 2,651,000                   | 2,779,000                    | 128,000                        |    |
| Planning and Research - HPR                                     | 3,089,000                   | 2,732,000                    | (367,000)                      |    |
| Planning and Research - PR                                      | 379,000                     | 0                            | (379,000)                      |    |
| Metro Planning - PL   | 951,000                     | 980,000                      | 29,000                         |    |
| Forest Highways   | 601,000                     | 636,000                      | 35,000                         |    |
| Support Services  | 200,000                     | 200,000                      | 0                              |    |
| Rail Continuance Assistance                                     | 400,000                     | 800,000                      | 400,000                        |    |
| UMTA  | 3,000,000                   | 2,470,000                    | (630,000)                      |    |
| Appalachian   | 3,138,000                   | 3,871,000                    | 833,000                        |    |
| FEMA  | 0                           | 1,800,000                    | 1,800,000                      | 4/ |
| Public Lands  | 0                           | 489,000                      | 489,000                        |    |
| Demonstration Projects:   |                             |                              |                                |    |
| - George P. Coleman Bridge                                      | 624,000                     | 648,000                      | 24,000                         |    |
| - Roanoke River Parkway   | 2,334,000                   | 2,433,000                    | 99,000                         |    |
| - I-66 HOV Lanes  | 4,650,000                   | 7,225,000                    | 2,575,000                      |    |
| - Joint Va/Md Program   | 452,000                     | 0                            | (452,000)                      |    |
| - Woodrow Wilson Bridge   | 6,813,000                   | 0                            | (6,813,000)                    |    |
| <b>TOTAL FEDERAL AID</b>  | <b>306,068,000</b>          | <b>388,668,000</b>           | <b>82,600,000</b>              |    |
| <b>LOCAL REVENUE SOURCES</b>                                    |                             |                              |                                |    |
| Urban Construction Projects                                     | 2,820,000                   | 2,500,000                    | (420,000)                      |    |
| Revenue Sharing   | 10,000,000                  | 10,000,000                   | 0                              |    |
| Coal Severance Tax Roads  | 9,000,000                   | 9,000,000                    | 0                              |    |
| <b>TOTAL LOCAL REVENUE SOURCES</b>                              | <b>21,820,000</b>           | <b>21,500,000</b>            | <b>(420,000)</b>               |    |
| <b>TOTAL HIGHWAY MAINTENANCE<br/>AND OPERATING FUND REVENUE</b> | <b>\$1,184,818,700</b>      | <b>\$1,256,815,000</b>       | <b>\$72,096,300</b>            |    |

| <b>ESTIMATE OF REVENUES<br/>FISCAL YEAR 1991 - '92</b>  |                             |                              |                                |
|---|-----------------------------|------------------------------|--------------------------------|
| <b>TRANSPORTATION TRUST FUND</b>  | <b>BUDGETED<br/>1990-91</b> | <b>ESTIMATED<br/>1991-92</b> | <b>INCREASE<br/>(DECREASE)</b> |
| <b>TOLL FACILITIES REVENUE SOURCES</b>  |                             |                              |                                |
| Toll Facilities   | \$107,774,200               | \$84,389,100                 | (\$23,385,100)                 |
| <b>TOTAL TOLL FACILITIES REVENUE SOURCES</b>  | <b>107,774,200</b>          | <b>84,389,100</b>            | <b>(23,385,100)</b>            |
| <b>1988 SPECIAL SESSION REVENUE SOURCES</b>   |                             |                              |                                |
| Motor Vehicle Fuels Tax   | 82,693,000                  | 79,265,000                   | (3,328,000)                    |
| Road Tax  | 4,984,000                   | 5,126,000                    | 142,000                        |
| Aviation Fuels Tax  | 928,000                     | 937,000                      | 11,000                         |
| State General Sales and Use Tax   | 236,194,000                 | 241,196,000                  | 6,022,000                      |
| Motor Vehicle Sales and Use Tax   | 96,267,000                  | 98,325,000                   | 2,058,000                      |
| Motor Vehicle Rental Tax  | 3,404,000                   | 3,437,000                    | 33,000                         |
| License Fees  | 14,502,000                  | 16,255,000                   | 1,753,000                      |
| <b>SUBTOTAL</b>   | <b>437,810,000</b>          | <b>444,501,000</b>           | <b>6,691,000</b>               |
| <b>Interest Earnings (Less Basis Points)</b>  |                             |                              |                                |
| Mass Transit Fund   | 875,200                     | 411,700                      | (463,500)                      |
| Airport Fund  | 437,900                     | 276,900                      | (161,000)                      |
| Port Fund   | 1,044,600                   | 640,600                      | (404,000)                      |
| Toll Facilities Revolving Account   | 12,613,200                  | 4,829,700                    | (7,783,500)                    |
| <b>SUBTOTAL</b>   | <b>14,970,900</b>           | <b>6,158,900</b>             | <b>(8,812,000)</b>             |
| Unallocated Balance   | (8,392,500)                 | 0                            | 8,392,500 1/                   |
| <b>TOTAL SPECIAL SESSION REVENUE SOURCES</b>  | <b>444,388,400</b>          | <b>450,659,900</b>           | <b>6,271,500</b>               |
| <b>OTHER TRUST FUND REVENUES</b>  |                             |                              |                                |
| Primary Highway Transportation<br>Improvement District Revenue  | 5,293,000                   | 6,514,000                    | 1,221,000                      |
| U. S. Route 58 Corridor Development Fund  | 40,000,000                  | 16,274,100                   | (23,725,900) 6/                |
| U. S. Route 58 Bond Proceeds  | 188,958,600                 | 0                            | (188,958,600)                  |
| Airport Assistance  | 0                           | 9,500,000                    | 9,500,000 8/                   |
| <b>TOTAL TRANSPORTATION<br/>TRUST FUND REVENUE</b>  | <b>786,354,200</b>          | <b>567,337,100</b>           | <b>(219,017,100)</b>           |
| <b>GRAND TOTAL REVENUE<br/>HIGHWAY MAINTENANCE AND OPERATING FUND<br/>AND TRANSPORTATION TRUST FUND</b> |                             |                              |                                |
|   | <b>\$1,871,172,900</b>      | <b>\$1,824,252,100</b>       | <b>(\$46,920,800)</b>          |

**RECOMMENDED ALLOCATION OF ESTIMATED REVENUES**  
**HIGHWAY MAINTENANCE AND OPERATING FUND**  
**TRANSPORTATION TRUST FUND**

**RECOMMENDED ALLOCATION OF ESTIMATED REVENUES  
FISCAL YEAR 1991 - 92**

| <b>HIGHWAY MAINTENANCE AND OPERATING FUND</b>                       | <b>ALLOCATED<br/>1991-92</b> | <b>RECOMMENDED<br/>1991-92</b> | <b>INCREASE<br/>(DECREASE)</b> |
|---|------------------------------|--------------------------------|--------------------------------|
| <b>ADMINISTRATIVE AND SUPPORT SERVICES</b>                          |                              |                                |                                |
| General Management and Direction                                    | \$42,111,700                 | \$40,005,000                   | (\$2,106,700)                  |
| Computer Services   | 16,813,100                   | 16,858,900                     | 45,800                         |
| Physical Plant Services   | 9,287,700                    | 8,542,900                      | (744,800)                      |
| <b>TOTAL ADMINISTRATIVE<br/>AND SUPPORT SERVICES</b>                | <b>68,212,500</b>            | <b>65,406,800</b>              | <b>(2,805,700)</b>             |
| <b>GROUND TRANSPORTATION REGULATION</b>                             |                              |                                |                                |
| Mobile Truck Weighing   | 1,805,900                    | 1,716,157                      | (89,743)                       |
| Interstate Permanent Truck Weighing                                 | 3,730,800                    | 3,361,004                      | (369,796)                      |
| Primary Permanent Truck Weighing                                    | 1,415,600                    | 1,712,139                      | 296,539                        |
| Truck Volume and Weight Study                                       | 19,900                       | 0                              | (19,900)                       |
| <b>TOTAL GROUND TRANSPORTATION<br/>REGULATION</b>                   | <b>6,972,200</b>             | <b>6,789,300</b>               | <b>(182,900)</b>               |
| <b>GROUND TRANSPORTATION SYSTEM PLANNING AND RESEARCH</b>           |                              |                                |                                |
| Research Council - Administration                                   | 847,400                      | 907,815                        | (39,585)                       |
| Research Council - State Research                                   | 1,739,900                    | 1,769,885                      | 19,985                         |
| <b>TOTAL GROUND TRANSPORTATION SYSTEM<br/>PLANNING AND RESEARCH</b> | <b>2,587,300</b>             | <b>2,667,700</b>               | <b>(18,000)</b>                |
| <b>HIGHWAY SYSTEM MAINTENANCE</b>                                   |                              |                                |                                |
| Interstate Maintenance  | 86,889,300                   | 111,716,300                    | 14,826,000                     |
| Primary Maintenance   | 181,907,000                  | 183,392,900                    | 1,485,900                      |
| Secondary Maintenance   | 201,186,700                  | 213,087,700                    | 11,899,000                     |
| <b>TOTAL HIGHWAY SYSTEM MAINTENANCE</b>                             | <b>479,983,000</b>           | <b>508,395,900</b>             | <b>28,410,900</b> 4/           |
| <b>GROUND TRANSPORTATION SYSTEM SAFETY</b>                          |                              |                                |                                |
| Ground Transportation Safety Research and Analysis                  | 6,448,200                    | 6,102,100                      | (346,100)                      |
| <b>TOTAL GROUND TRANSPORTATION<br/>SYSTEM SAFETY</b>                | <b>6,448,200</b>             | <b>6,102,100</b>               | <b>(346,100)</b>               |



**RECOMMENDED ALLOCATION OF ESTIMATED REVENUES  
FISCAL YEAR 1991 - 92**

| <b>HIGHWAY MAINTENANCE<br/>AND OPERATING FUND (cont.)</b>                     | <b>ALLOCATED<br/>1990-91</b> | <b>RECOMMENDED<br/>1991-92</b> | <b>INCREASE<br/>(DECREASE)</b> |
|---|------------------------------|--------------------------------|--------------------------------|
| <b>FINANCIAL ASSISTANCE TO LOCALITIES<br/>FOR GROUND TRANSPORTATION</b>       |                              |                                |                                |
| Financial Assistance for City Street Maintenance                              | \$132,669,200                | \$142,152,000                  | \$9,482,800                    |
| Financial Assistance for County Road Maintenance                              |                              |                                |                                |
| Arlington County  | 8,210,400                    | 8,788,700                      | 568,300                        |
| Henrico County  | 11,092,800                   | 11,846,800                     | 754,000                        |
| Subtotal - County Road Maintenance  | 19,303,200                   | 20,635,500                     | 1,312,300                      |
| <b>TOTAL FINANCIAL ASSISTANCE TO LOCALITIES<br/>FOR GROUND TRANSPORTATION</b> | <b>151,962,400</b>           | <b>162,767,500</b>             | <b>10,805,100</b>              |
| <b>MASS TRANSIT ASSISTANCE</b>  |                              |                                |                                |
| State Aid for Mass Transit  | 35,050,000                   | 35,050,000                     | 0                              |
| Washington Metropolitan Area Transit Commission                               | 142,000                      | 166,000                        | 24,000                         |
| UMTA Grants   | 3,000,000                    | 2,470,000                      | (530,000)                      |
| Rail Continuance Assistance Grants  | 400,000                      | 600,000                        | 400,000                        |
| Public Transportation - Routine Operations                                    | 1,001,200                    | 1,015,800                      | 14,600                         |
| <b>TOTAL MASS TRANSIT ASSISTANCE</b>  | <b>39,593,200</b>            | <b>39,601,800</b>              | <b>(81,400)</b>                |
| <b>LAND MANAGEMENT</b>  |                              |                                |                                |
| Regulation of Outdoor Advertising   | 641,300                      | 686,400                        | 24,100                         |
| <b>TOTAL LAND MANAGEMENT</b>  | <b>641,300</b>               | <b>686,400</b>                 | <b>24,100</b>                  |
| <b>SUPPORT TO OTHER STATE AGENCIES</b>  |                              |                                |                                |
| Alcohol Fuel Production Incentive Fund  | 10,200,000                   | 3,100,000                      | (7,100,000)                    |
| Department of Education   | 150,000                      | 150,000                        | 0                              |
| Marine Resources Commission   | 538,815                      | 546,375                        | 7,560                          |
| Secretary of Transportation   | 396,200                      | 397,000                        | 800                            |
| Department of General Services  | 263,000                      | 128,000                        | (125,000)                      |
| Department of Agriculture and Consumer Services                               | 85,000                       | 85,000                         | 0                              |
| Department of Law   | 670,400                      | 695,800                        | 25,400                         |
| Department of State Police  | 2,825,500                    | 3,020,400                      | 194,900                        |
| Chesapeake Bay Initiatives  | 4,169,185                    | 4,418,625                      | 249,440                        |
| Department of Minority Business Enterprise                                    | 645,300                      | 572,500                        | (72,200)                       |
| Department of Information Technology  | 390,100                      | 1,222,400                      | 832,300                        |
| Social Security Savings   | 778,100                      | 886,200                        | 107,100                        |
| Virginia Liaison Office   | 74,800                       | 69,600                         | (5,200)                        |
| Department of Economic Development  | 0                            | 300,000                        | 300,000 7)                     |
| Indirect Cost   | 2,423,000                    | 2,553,800                      | 130,800                        |
| <b>TOTAL SUPPORT TO OTHER STATE AGENCIES</b>                                  | <b>23,700,400</b>            | <b>18,345,700</b>              | <b>(5,354,700)</b>             |
| <b>GENERAL FUND TRANSFERS</b>   |                              |                                |                                |
| Alcohol Fuel Production Incentive Fund  | 3,885,000                    | 9,900,000                      | 6,015,000                      |
| Highway System Maintenance  | 14,894,600                   | 16,411,400                     | 1,716,800                      |
| Other Program Reductions  | 4,831,200                    | 14,513,600                     | 9,882,400 8/                   |
| <b>TOTAL GENERAL FUND TRANSFERS</b>   | <b>23,210,800</b>            | <b>40,825,000</b>              | <b>17,614,200</b>              |
| <b>TOTAL ALLOCATION FROM HIGHWAY MAINTENANCE<br/>AND OPERATING FUND</b>       | <b>\$803,313,500</b>         | <b>\$851,367,800</b>           | <b>\$48,054,300</b>            |

| RECOMMENDED ALLOCATION OF ESTIMATED REVENUES<br>FISCAL YEAR 1991 - 92 |                      |                        |                        |
|---|----------------------|------------------------|------------------------|
| TRANSPORTATION TRUST FUND   | ALLOCATED<br>1989-91 | RECOMMENDED<br>1991-92 | INCREASE<br>(DECREASE) |
| <b>TRUST FUND MANAGEMENT</b>  |                      |                        |                        |
| Department of Taxation  | \$4,744,000          | \$1,163,400            | (\$3,580,600)          |
| Department of Transportation  | 315,500              | 322,900                | 7,400                  |
| Department of General Services/Risk Management                        | 0                    | 400,000                | 400,000 9/             |
| <b>TOTAL TRUST FUND MANAGEMENT</b>                                    | <b>5,059,500</b>     | <b>1,886,300</b>       | <b>(3,173,200)</b>     |
| <b>VDOT TTF INDIRECT COST</b>   |                      |                        |                        |
| Indirect Cost   | 2,589,700            | 2,530,100              | (59,600)               |
| <b>TOTAL VDOT TTF INDIRECT COST</b>                                   | <b>2,589,700</b>     | <b>2,530,100</b>       | <b>(59,600)</b>        |
| <b>MASS TRANSIT TRUST FUND</b>  |                      |                        |                        |
| Special Programs  | 584,900              | 583,900                | (400)                  |
| Formula Assistance  | 27,648,700           | 27,629,600             | (19,100)               |
| Capital Assistance  | 9,404,300            | 9,397,800              | (6,500)                |
| <b>TOTAL MASS TRANSIT TRUST FUND</b>                                  | <b>37,637,900</b>    | <b>37,591,300</b>      | <b>(26,000)</b>        |
| <b>AIRPORT TRUST FUND</b>   |                      |                        |                        |
| Air Carrier Airports  | 4,267,700            | 4,359,900              | 92,200                 |
| Air Carrier and Reliever Airports                                     | 4,267,700            | 4,359,900              | 92,200                 |
| General Aviation Airports   | 2,133,800            | 2,179,900              | 46,100                 |
| <b>TOTAL AIRPORT TRUST FUND</b>                                       | <b>10,669,200</b>    | <b>10,899,700</b>      | <b>230,500</b>         |
| <b>PORT TRUST FUND</b>  |                      |                        |                        |
| Port Capital Facilities   | 15,662,300           | 15,662,300             | 0                      |
| Preservation of Capital Facilities                                    | 3,148,700            | 3,568,200              | 421,500                |
| <b>TOTAL PORT TRUST FUND</b>  | <b>18,811,000</b>    | <b>19,230,500</b>      | <b>421,500</b>         |
| <b>TOLL FACILITY OPERATIONS</b>                                       |                      |                        |                        |
| Acquisition and Construction  | 60,441,400           | 40,915,300             | (19,526,100)           |
| Debt Service  | 17,420,200           | 15,471,900             | (1,948,300)            |
| Maintenance and Operation   | 29,912,600           | 29,001,900             | (910,700)              |
| Toll Facilities Revolving Fund  | 18,303,200           | 4,829,700              | (13,473,500)           |
| <b>TOTAL TOLL FACILITY OPERATIONS</b>                                 | <b>126,077,400</b>   | <b>89,218,800</b>      | <b>(36,858,600)</b>    |
| <b>CAPITAL OUTLAY</b>   | <b>10,394,800</b>    | <b>1,178,600</b>       | <b>(9,216,200) 10/</b> |
| <b>GENERAL FUND TRANSFERS</b>   |                      |                        |                        |
| Capital Outlay  | 4,349,500            | 4,577,500              | 228,000                |
| Other Program Reductions  | 3,008,000            | 4,469,800              | 1,461,800 11/          |
| <b>TOTAL GENERAL FUND TRANSFERS</b>                                   | <b>7,357,500</b>     | <b>9,047,300</b>       | <b>1,689,800</b>       |
| <b>AIRPORT ASSISTANCE</b>   |                      |                        |                        |
| Financial Assistance to Airports                                      | 0                    | 9,500,000              | 9,500,000 6/           |
| <b>TOTAL AIRPORT ASSISTANCE</b>                                       | <b>0</b>             | <b>9,500,000</b>       | <b>9,500,000</b>       |

**RECOMMENDED ALLOCATION OF ESTIMATED REVENUES  
FISCAL YEAR 1991 - 92**

| <b>TRANSPORTATION TRUST FUND (continued)</b>                     | <b>ALLOCATED<br/>1990-91</b> | <b>RECOMMENDED<br/>1991-92</b> | <b>INCREASE<br/>(DECREASE)</b> |
|--|------------------------------|--------------------------------|--------------------------------|
| <b>HIGHWAY ACQUISITION AND CONSTRUCTION</b>                      |                              |                                |                                |
| <b>ACCESS ROADS AND OTHER CONSTRUCTION</b>                       |                              |                                |                                |
| Industrial Access  | \$4,000,000                  | \$4,000,000                    | \$0 12/                        |
| Recreational Access  | 1,800,000                    | 1,800,000                      | 0 12/                          |
| Airport Access   | 0                            | 0                              | 0 12/                          |
| Industrial Access Railroad Tracks                                | 1,000,000                    | 500,000                        | (500,000) 12/                  |
| Revenue Sharing  | 20,000,000                   | 20,000,000                     | 0                              |
| Coal Severance Tax Roads   | 9,000,000                    | 9,000,000                      | 0                              |
| Forest Highways  | 801,000                      | 638,000                        | 35,000                         |
| Appalachian  | 3,198,000                    | 3,971,000                      | 833,000                        |
| Demonstration Projects   | 14,053,000                   | 10,306,000                     | (3,747,000)                    |
| <b>TOTAL ACCESS ROADS<br/>AND OTHER CONSTRUCTION</b>             | <b>53,292,000</b>            | <b>49,913,000</b>              | <b>(3,379,000)</b>             |
| <b>CONSTRUCTION MANAGEMENT</b>                                   |                              |                                |                                |
| General Management   | 47,125,200                   | 46,167,400                     | (957,800)                      |
| <b>TOTAL CONSTRUCTION MANAGEMENT</b>                             | <b>47,125,200</b>            | <b>46,167,400</b>              | <b>(957,800)</b>               |
| <b>PRIMARY HIGHWAY TRANSPORTATION IMPROVEMENT</b>                |                              |                                |                                |
| <b>DISTRICT DEBT SERVICE</b>                                     | <b>5,233,000</b>             | <b>6,514,000</b>               | <b>1,281,000</b>               |
| <b>DESIGNATED HIGHWAY CORRIDOR DEVELOPMENT PROGRAM</b>           |                              |                                |                                |
| U. S. Route 58 Corridor Development Fund                         | 40,000,000                   | 18,274,100                     | (23,725,900) 5/                |
| U. S. Route 58 Bond Proceeds                                     | 188,858,600                  | 0                              | (188,858,600)                  |
| <b>TOTAL DESIGNATED HIGHWAY CORRIDOR<br/>DEVELOPMENT PROGRAM</b> | <b>228,858,600</b>           | <b>18,274,100</b>              | <b>(212,884,500)</b>           |

**RECOMMENDED ALLOCATION OF ESTIMATED REVENUES  
FISCAL YEAR 1991 - 92**

| <b>TRANSPORTATION TRUST FUND (continued)</b>   | <b>ALLOCATED<br/>1991-91</b> | <b>RECOMMENDED<br/>1991-92</b> | <b>INCREASE<br/>(DECREASE)</b> |
|--|------------------------------|--------------------------------|--------------------------------|
| <b>HIGHWAY ACQUISITION AND CONSTRUCTION (continued)</b>  |                              |                                |                                |
| <b>SYSTEMS CONSTRUCTION</b>  |                              |                                |                                |
| <b>INTERSTATE CONSTRUCTION</b>   |                              |                                |                                |
| Interstate Federal Aid   | \$166,539,000                | \$241,681,000                  | \$75,142,000 2/                |
| Interstate Match   | 22,710,000                   | 32,857,000                     | 10,247,000                     |
| <b>TOTAL INTERSTATE CONSTRUCTION</b>   | <b>189,249,000</b>           | <b>274,538,000</b>             | <b>85,289,000</b>              |
| <b>PRIMARY CONSTRUCTION</b>  |                              |                                |                                |
| Formula  | 169,113,900                  | 149,040,100                    | (10,073,800)                   |
| <b>TOTAL PRIMARY CONSTRUCTION</b>  | <b>169,113,900</b>           | <b>149,040,100</b>             | <b>(10,073,800)</b>            |
| <b>SECONDARY CONSTRUCTION</b>  |                              |                                |                                |
| Formula  | 119,335,400                  | 111,780,100                    | (7,555,300)                    |
| Unpaved Roads  | 24,722,500                   | 23,195,500                     | (1,527,000)                    |
| <b>TOTAL SECONDARY CONSTRUCTION</b>  | <b>144,057,900</b>           | <b>134,975,600</b>             | <b>(9,082,300)</b>             |
| <b>URBAN CONSTRUCTION</b>  |                              |                                |                                |
| Formula  | 119,335,400                  | 111,780,100                    | (7,555,300)                    |
| Local Match  | 2,920,000                    | 2,500,000                      | (420,000)                      |
| <b>TOTAL URBAN CONSTRUCTION</b>  | <b>122,255,400</b>           | <b>114,280,100</b>             | <b>(7,975,300)</b>             |
| <b>TOTAL SYSTEMS CONSTRUCTION</b>  | <b>614,878,800</b>           | <b>672,933,800</b>             | <b>58,257,600</b>              |
| <b>TOTAL HIGHWAY ACQUISITION<br/>AND CONSTRUCTION</b>  | <b>849,285,000</b>           | <b>791,902,300</b>             | <b>(157,482,700)</b>           |
| <b>TOTAL ALLOCATION FROM<br/>TRANSPORTATION TRUST FUND</b>   | <b>1,167,859,400</b>         | <b>972,694,900</b>             | <b>(184,974,500)</b>           |
| <b>GRAND TOTAL ALLOCATION<br/>HIGHWAY MAINTENANCE AND OPERATING FUND<br/>AND TRANSPORTATION TRUST FUND</b> | <b>\$1,971,172,900</b>       | <b>\$1,824,252,100</b>         | <b>(\$146,920,800)</b>         |

**DETAILED DISTRIBUTION OF SPECIAL SESSION REVENUE  
TRANSPORTATION TRUST FUND**

| <b>DETAILED DISTRIBUTION OF 1986 SPECIAL SESSION REVENUE<br/>RECOMMENDED ALLOCATION OF ESTIMATED REVENUES<br/>FISCAL YEAR 1991 - 92</b> |                              |                                |                                |
|---|------------------------------|--------------------------------|--------------------------------|
| <b>TRANSPORTATION TRUST FUND</b>  | <b>ALLOCATED<br/>1990-91</b> | <b>RECOMMENDED<br/>1991-92</b> | <b>INCREASE<br/>(DECREASE)</b> |
| <b>1986 SPECIAL SESSION REVENUE</b>   | <b>\$437,810,000</b>         | <b>\$444,501,000</b>           | <b>\$6,691,000</b>             |
| Less: Trust Fund Management   | 5,059,500                    | 1,886,300                      | (3,173,200)                    |
| <b>NET 1986 SPECIAL SESSION REVENUE<br/>AVAILABLE FOR DISTRIBUTION</b>  | <b>432,750,500</b>           | <b>442,614,700</b>             | <b>9,864,200</b>               |
| INTEREST EARNINGS   | 14,970,900                   | 6,158,900                      | (8,812,000)                    |
| UNALLOCATED BALANCE   | (8,392,500)                  | 0                              | 8,392,500 1/                   |
| <b>TOTAL AVAILABLE FOR DISTRIBUTION</b>   | <b>439,328,900</b>           | <b>448,773,600</b>             | <b>9,444,700</b>               |
| <b>DISTRIBUTION</b>   |                              |                                |                                |
| <b>MASS TRANSIT TRUST FUND (8.4%)</b>   |                              |                                |                                |
| 1986 Special Session Revenue  | 36,361,000                   | 37,178,600                     | 828,600                        |
| Unallocated Balance   | 391,100                      | 0                              | (391,100) 1/                   |
| Interest Earnings   | 575,200                      | 411,700                        | (163,500)                      |
| <b>SUBTOTAL AVAILABLE</b>   | <b>37,327,300</b>            | <b>37,591,300</b>              | <b>(26,000)</b>                |
| Less: Indirect Cost   | 128,300                      | 121,300                        | (7,000)                        |
| <b>NET MASS TRANSIT TRUST FUND</b>  | <b>37,199,000</b>            | <b>37,470,000</b>              | <b>(19,000)</b>                |
| <b>AIRPORT TRUST FUND (2.4%)</b>  |                              |                                |                                |
| 1986 Special Session Revenue  | 10,386,000                   | 10,522,800                     | 236,800                        |
| Unallocated Balance   | (154,700)                    | 0                              | 154,700 1/                     |
| Interest Earnings   | 437,900                      | 276,900                        | (161,000)                      |
| <b>SUBTOTAL AVAILABLE</b>   | <b>10,669,200</b>            | <b>10,800,700</b>              | <b>230,500</b>                 |
| Less: Indirect Cost   | 36,700                       | 34,700                         | (2,000)                        |
| <b>NET AIRPORT TRUST FUND</b>   | <b>10,632,500</b>            | <b>10,865,000</b>              | <b>232,500</b>                 |
| <b>PORT TRUST FUND (4.2%)</b>   |                              |                                |                                |
| 1986 Special Session Revenue  | 18,175,800                   | 18,588,900                     | 414,300                        |
| Unallocated Balance   | (411,200)                    | 0                              | 411,200 1/                     |
| Interest Earnings   | 1,044,900                    | 640,800                        | (404,000)                      |
| <b>SUBTOTAL AVAILABLE</b>   | <b>18,809,500</b>            | <b>19,230,500</b>              | <b>421,500</b>                 |
| Less: Indirect Cost   | 64,200                       | 60,700                         | (3,500)                        |
| <b>NET PORT TRUST FUND</b>  | <b>18,744,800</b>            | <b>19,169,800</b>              | <b>425,000</b>                 |
| <b>TOLL FACILITIES REVOLVING</b>  |                              |                                |                                |
| Interest Earnings   | 12,613,200                   | 4,829,700                      | (7,783,500)                    |
| Unallocated Balance   | 6,690,000                    | 0                              | (6,690,000) 1/                 |
| <b>NET TOLL FACILITIES REVOLVING</b>  | <b>19,303,200</b>            | <b>4,829,700</b>               | <b>(13,473,500)</b>            |

**DETAILED DISTRIBUTION OF 1986 SPECIAL SESSION REVENUE  
RECOMMENDED ALLOCATION OF ESTIMATED REVENUES  
FISCAL YEAR 1991 - 92**

| <b>TRANSPORTATION TRUST FUND (cont.)</b>       | <b>ALLOCATED<br/>1990-91</b> | <b>RECOMMENDED<br/>1991-92</b> | <b>INCREASE<br/>(DECREASE)</b> |
|--|------------------------------|--------------------------------|--------------------------------|
| <b>HIGHWAY CONSTRUCTION TRUST FUND (85.0%)</b> |                              |                                |                                |
| 1986 Special Session Revenue                   | \$387,837,900                | \$376,222,400                  | \$11,615,500                   |
| Unallocated Balance                            | (19,907,700)                 | 0                              | 19,907,700 1/                  |
| <b>SUBTOTAL AVAILABLE</b>                      | <b>367,930,200</b>           | <b>376,222,400</b>             | <b>8,292,200</b>               |
| Less: Indirect Cost                            | 1,298,400                    | 1,227,600                      | (70,800)                       |
| <b>NET HIGHWAY CONSTRUCTION TRUST FUND</b>     | <b>366,631,800</b>           | <b>374,994,800</b>             | <b>8,363,000</b>               |
| <b>TOTAL DISTRIBUTION</b>                      | <b>\$439,328,900</b>         | <b>\$448,773,600</b>           | <b>\$9,444,700</b>             |

**DETAILED DISTRIBUTION OF MASS TRANSIT PROGRAM  
HIGHWAY MAINTENANCE AND OPERATING FUND  
TRANSPORTATION TRUST FUND**



**DETAILED DISTRIBUTION OF MASS TRANSIT PROGRAM  
RECOMMENDED ALLOCATION OF ESTIMATED REVENUES  
FISCAL YEAR 1991 - 92**

|   | ALLOCATED<br>1990-91 | RECOMMENDED<br>1991-92 | INCREASE<br>(DECREASE) |
|---|----------------------|------------------------|------------------------|
| <b>PROPOSED MASS TRANSIT PROGRAM</b>                                |                      |                        |                        |
| Northern Virginia Transportation Commission                         | \$48,024,842         | \$48,828,588           | \$803,744              |
| Commuter Rail   | 3,260,368            | 5,677,629              | 2,417,174              |
| Prince William County   | 1,803,245            | 806,289                | (1,296,956)            |
| Tidewater Transportation District Commission                        | 8,289,764            | 8,634,208              | 334,452                |
| Richmond Area   | 5,042,338            | 5,130,875              | 88,537                 |
| Peninsula Transportation District Commission                        | 4,199,447            | 2,270,445              | (1,929,002)            |
| Roanoke Area  | 1,155,512            | 710,928                | (444,584)              |
| Lynchburg Area  | 788,108              | 592,747                | (195,361)              |
| Tri-Cities Area   | 540,080              | 217,788                | (322,292)              |
| Bristol Area  | 32,517               | 136,820                | 84,303                 |
| Charlottesville Area  | 381,894              | 352,989                | (28,725)               |
| Danville Area   | 182,636              | 171,809                | (10,826)               |
| Non Urbanized Areas   | 1,838,109            | 1,824,346              | 138,236                |
| Ridesharing Program Assistance                                      | 731,087              | 731,377                | 310                    |
| Experimental Public Transportation<br>Assistance Projects           | 325,501              | 220,980                | (104,521)              |
| Public Transportation Promotion and<br>Operations Studies           | 82,032               | 133,073                | 51,041                 |
| Subtotal State Aid to Mass Transit                                  | 73,515,236           | 73,140,528             | (\$374,710)            |
| Washington Metropolitan Area Transit Commission                     | 142,000              | 166,000                | 24,000                 |
| UMTA Grants   | 3,000,000            | 2,470,000              | (\$530,000)            |
| Rail Continuance Assistance Grants                                  | 400,000              | 800,000                | 400,000                |
| Public Transportation - Routine Operations                          | 1,001,200            | 1,018,800              | 14,600                 |
| <b>TOTAL COMBINED ALLOCATION</b>                                    | <b>\$78,058,436</b>  | <b>\$77,592,328</b>    | <b>(\$466,110)</b>     |
| <b>FUNDING SOURCES</b>  |                      |                        |                        |
| Undistributed Prior Year Highway<br>Maintenance and Operating Funds | 881,261              | 504,751                | (366,510)              |
| Undistributed Prior Year Mass Transit Trust Funds                   | 242,878              | 242,873                | 0                      |
| Highway Maintenance and<br>Operating Fund Allocation                | 39,485,300           | 39,374,700             | (90,600)               |
| Mass Transit Trust Fund Allocation                                  | 37,489,000           | 37,470,000             | (19,000)               |
| <b>TOTAL</b>  | <b>\$78,058,436</b>  | <b>\$77,592,328</b>    | <b>(\$466,110)</b>     |

**CAPITAL OUTLAY BUDGET :**  
**TRANSPORTATION TRUST FUND**

**CAPITAL OUTLAY BUDGET  
RECOMMENDED ALLOCATION OF ESTIMATED REVENUES  
TRANSPORTATION TRUST FUND  
FISCAL YEAR 1991 - 92**

**RECOMMENDED  
1991-92**

**FROM TRANSPORTATION TRUST FUND**

**NEW CONSTRUCTION: CHEMICAL STORAGE FACILITIES**

|                         |  |           |
|-------------------------|--|-----------|
| Richmond District       |  |           |
| Beech Area Headquarters |  | \$174,000 |

|  |  |                  |
|--|--|------------------|
| <b>TOTAL CONSTRUCTION:<br/>CHEMICAL STORAGE FACILITIES</b> |  | <b>\$174,000</b> |
|--|--|------------------|

**ACQUISITION: RELOCATION AND LAND FOR EXPANSION**

|                                  |  |        |
|----------------------------------|--|--------|
| Bristol District                 |  |        |
| Haystack Area Headquarters       |  | 82,500 |
| Fort Blackmore Area Headquarters |  | 62,500 |

|   |  |                |
|---|--|----------------|
| <b>TOTAL ACQUISITION:<br/>RELOCATION AND LAND FOR EXPANSION</b> |  | <b>145,000</b> |
|---|--|----------------|

**NEW CONSTRUCTION: OPERATIONAL FACILITIES**

|                                  |  |        |
|----------------------------------|--|--------|
| Salem District                   |  |        |
| Christiansburg Area Headquarters |  | 68,800 |
| New Castle Area Headquarters     |  | 40,800 |

|                             |  |        |
|-----------------------------|--|--------|
| Suffolk District            |  |        |
| Frederick Area Headquarters |  | 37,400 |

|                                |  |        |
|--------------------------------|--|--------|
| Fredericksburg District        |  |        |
| Ladysmith Area Headquarters    |  | 33,700 |
| Lottsburg Area Headquarters    |  | 25,500 |
| Tappahannock Area Headquarters |  | 33,700 |

|  |  |         |
|--|--|---------|
| Culpeper District                                |  |         |
| Gordonsville Area Headquarters (Partial Funding) |  | 223,600 |
| District Complex                                 |  | 66,100  |

|   |  |                |
|---|--|----------------|
| <b>TOTAL NEW CONSTRUCTION:<br/>OPERATIONAL FACILITIES</b> |  | <b>508,800</b> |
|---|--|----------------|

**ADDITIONAL FUNDING ITEMS**

|   |  |                |
|---|--|----------------|
| <b>NEW CONSTRUCTION:<br/>Dublin Area Headquarters</b> |  | <b>350,000</b> |
|---|--|----------------|

|   |  |                  |
|---|--|------------------|
| <b>TOTAL FROM TRANSPORTATION TRUST FUND</b> |  | <b>1,178,600</b> |
|---|--|------------------|

**CALCULATION OF FUNDS AVAILABLE FOR TRANSFER**  
**FROM**  
**HIGHWAY MAINTENANCE AND OPERATING FUND**  
**TO**  
**TRANSPORTATION TRUST FUND**

**CALCULATION OF FUNDS AVAILABLE FOR TRANSFER  
RECOMMENDED ALLOCATION OF ESTIMATED REVENUES  
FISCAL YEAR 1991 - 92**

| <b>HIGHWAY MAINTENANCE AND OPERATING FUND</b>                             | <b>ALLOCATED<br/>1990-91</b> | <b>RECOMMENDED<br/>1991-92</b> | <b>INCREASE<br/>(DECREASE)</b> |
|---|------------------------------|--------------------------------|--------------------------------|
| <b>REVENUE AVAILABLE FOR ALLOCATION</b>                                   |                              |                                |                                |
| TOTAL STATE REVENUE SOURCES   | \$856,830,700                | \$846,747,000                  | (\$10,083,700)                 |
| TOTAL FEDERAL AID   | 306,068,000                  | 388,668,000                    | 82,600,000                     |
| TOTAL LOCAL REVENUE SOURCES   | 21,920,000                   | 21,500,000                     | (420,000)                      |
| <b>TOTAL REVENUE AVAILABLE FOR ALLOCATION</b>                             | <b>1,184,818,700</b>         | <b>1,256,915,000</b>           | <b>72,096,300</b>              |
| <b>ALLOCATED FROM HIGHWAY MAINTENANCE AND OPERATING FUND</b>              |                              |                                |                                |
| FROM STATE REVENUE SOURCES  | 799,913,500                  | 840,702,200                    | 40,788,700                     |
| FROM FEDERAL AID  | 3,400,000                    | 10,886,000                     | 7,286,000                      |
| FROM LOCAL REVENUE SOURCES  | 0                            | 0                              | 0                              |
| <b>TOTAL ALLOCATED FROM HIGHWAY MAINTENANCE<br/>AND OPERATING FUND</b>    | <b>803,313,500</b>           | <b>851,588,200</b>             | <b>48,274,700</b>              |
| <b>TRANSFERRED TO TRANSPORTATION TRUST FUND</b>                           |                              |                                |                                |
| STATE REVENUE TRANSFERRED   | 58,917,200                   | 8,044,800                      | (50,872,400)                   |
| FEDERAL AID TRANSFERRED   | 302,668,000                  | 378,008,000                    | 75,336,000                     |
| LOCAL REVENUE TRANSFERRED   | 21,920,000                   | 21,500,000                     | (420,000)                      |
| <b>TOTAL AVAILABLE TO BE TRANSFERRED TO<br/>TRANSPORTATION TRUST FUND</b> | <b>\$383,505,200</b>         | <b>\$407,547,800</b>           | <b>\$24,042,600</b>            |

**DETAILED DISTRIBUTION OF  
INDIRECT COST ALLOCATION**

**DETAILED DISTRIBUTION OF INDIRECT COST ALLOCATION  
FISCAL YEAR 1990 - 91**

|   | ALLOCATED<br>1990-91 | RECOMMENDED<br>1991-92 | INCREASE<br>(DECREASE) |
|---|----------------------|------------------------|------------------------|
| <b>HIGHWAY MAINTENANCE AND OPERATING FUND</b>   |                      |                        |                        |
| Non-Construction Programs   | \$2,423,000          | \$2,553,800            | \$130,800              |
| Mass Transit  | 127,800              | 127,100                | (800)                  |
| Subtotal Highway Maintenance and Operating Fund                                       | 2,550,800            | 2,680,900              | 130,000                |
| <b>TRANSPORTATION TRUST FUND</b>  |                      |                        |                        |
| <b>Toll Facilities</b>  |                      |                        |                        |
| Norfolk-Virginia Beach Toll Road  | 89,302               | 62,884                 | (16,818)               |
| Dulles Toll Road  | 62,603               | 67,141                 | 4,538                  |
| Richmond-Petersburg Turnpike  | 154,135              | 106,426                | (47,709)               |
| Powhite Parkway Extension   | 20,860               | 22,749                 | 1,889                  |
| Subtotal Toll Facilities  | 306,900              | 249,000                | (57,900)               |
| Construction Program  | 2,569,700            | 2,530,100              | (59,600)               |
| Mass Transit  | 128,300              | 121,300                | (7,000)                |
| Ports   | 64,200               | 60,700                 | (3,500)                |
| Airports  | 36,700               | 34,700                 | (2,000)                |
| Subtotal Transportation Trust Fund  | 3,125,800            | 2,895,800              | (130,000)              |
| <b>TOTAL HIGHWAY MAINTENANCE AND OPERATING FUND<br/>AND TRANSPORTATION TRUST FUND</b> | <b>\$5,676,600</b>   | <b>\$5,576,700</b>     | <b>\$99,900</b>        |

**DETAILED CONTRIBUTIONS  
TO GENERAL FUND**



**DETAILED CONTRIBUTIONS TO GENERAL FUND  
FISCAL YEAR 1991 - '92**

|   | <b>ALLOCATED<br/>1990-91</b> | <b>RECOMMENDED<br/>1991-92</b> | <b>INCREASE<br/>(DECREASE)</b> |
|---|------------------------------|--------------------------------|--------------------------------|
| <b>HIGHWAY MAINTENANCE AND OPERATING FUND</b>   |                              |                                |                                |
| Alcohol Fuel Production Incentive Fund  | \$3,855,000                  | \$8,900,000                    | \$6,015,000                    |
| Other Program Reductions  | 4,831,200                    | 14,513,600                     | 9,882,400 8/                   |
| Highway System Maintenance  | 14,884,800                   | 16,411,400                     | 1,716,600                      |
| <b>TOTAL HIGHWAY MAINTENANCE<br/>AND OPERATING FUND</b>                               | <b>23,210,800</b>            | <b>40,825,000</b>              | <b>17,614,200</b>              |
| <b>TRANSPORTATION TRUST FUND</b>  |                              |                                |                                |
| Capital Outlay  | 4,348,500                    | 4,577,500                      | 228,000                        |
| Other Program Reductions  | 3,008,000                    | 4,469,800                      | 1,461,800 11/                  |
| <b>TOTAL TRANSPORTATION TRUST FUND</b>  | <b>7,357,500</b>             | <b>9,047,300</b>               | <b>1,689,800</b>               |
| <b>TOTAL HIGHWAY MAINTENANCE AND OPERATING FUND<br/>AND TRANSPORTATION TRUST FUND</b> | <b>\$30,568,300</b>          | <b>\$49,872,300</b>            | <b>\$19,304,000</b>            |

**HIGHWAY CONSTRUCTION SUMMARY**  
**TRANSPORTATION TRUST FUND**

| HIGHWAY CONSTRUCTION SUMMARY                 |                      |                        |                        |
|--|----------------------|------------------------|------------------------|
| RECOMMENDED ALLOCATION OF ESTIMATED REVENUES |                      |                        |                        |
| FISCAL YEAR 1991 - 92                        |                      |                        |                        |
| TRANSPORTATION TRUST FUND                    | ALLOCATED<br>1990-91 | RECOMMENDED<br>1991-92 | INCREASE<br>(DECREASE) |

**INTERSTATE CONSTRUCTION**

|                                      |                      |                      |                     |
|--------------------------------------|----------------------|----------------------|---------------------|
| Bristol District                     | \$3,590,000          | \$8,520,000          | \$4,930,000         |
| Salem District                       | 3,390,000            | 3,753,000            | 363,000             |
| Lynchburg District                   | ---                  | ---                  | ---                 |
| Richmond District                    | 13,881,000           | 7,075,000            | (6,776,000)         |
| Suffolk District                     | 92,870,000           | 58,608,000           | (36,282,000)        |
| Fredericksburg District              | 6,515,000            | 2,835,000            | (3,680,000)         |
| Culpeper District                    | 93,000               | 96,000               | 3,000               |
| Staunton District                    | 3,455,000            | 5,055,000            | 1,600,000           |
| Northern Virginia District           | 66,485,000           | 190,684,000          | 126,200,000         |
| <b>TOTAL INTERSTATE CONSTRUCTION</b> | <b>\$189,249,000</b> | <b>\$274,838,000</b> | <b>\$85,589,000</b> |

**PRIMARY CONSTRUCTION**

|                                   |                      |                      |                       |
|-----------------------------------|----------------------|----------------------|-----------------------|
| Bristol District                  | \$25,706,600         | \$18,490,600         | (\$7,216,000)         |
| Salem District                    | 19,205,500           | 17,993,000           | (1,212,500)           |
| Lynchburg District                | 17,191,800           | 16,166,800           | (1,025,000)           |
| Richmond District                 | 23,780,400           | 23,057,500           | (702,600)             |
| Suffolk District                  | 13,088,600           | 12,287,500           | (778,100)             |
| Fredericksburg District           | 15,388,500           | 16,789,200           | 1,372,700             |
| Culpeper District                 | 14,121,700           | 13,278,000           | (843,700)             |
| Staunton District                 | 14,315,800           | 13,245,500           | (1,070,400)           |
| Northern Virginia District        | 18,359,100           | 17,762,300           | (596,800)             |
| <b>TOTAL PRIMARY CONSTRUCTION</b> | <b>\$169,113,900</b> | <b>\$149,040,100</b> | <b>(\$10,073,800)</b> |

**HIGHWAY CONSTRUCTION SUMMARY**  
**RECOMMENDED ALLOCATION OF ESTIMATED REVENUES**  
**FISCAL YEAR 1991 - 92**

| <b>TRANSPORTATION TRUST FUND (continued)</b> | <b>ALLOCATED<br/>1990-91</b> | <b>RECOMMENDED<br/>1991-92</b> | <b>INCREASE<br/>(DECREASE)</b> |
|--|------------------------------|--------------------------------|--------------------------------|
| <b>SECONDARY CONSTRUCTION</b>                |                              |                                |                                |
| Bristol District                             | \$16,973,872                 | \$13,089,196                   | (\$3,884,676)                  |
| Salem District                               | 16,460,518                   | 13,094,635                     | (3,365,883)                    |
| Lynchburg District                           | 12,974,802                   | 10,708,451                     | (2,266,451)                    |
| Richmond District                            | 21,985,416                   | 19,937,316                     | (3,048,100)                    |
| Suffolk District                             | 8,755,018                    | 6,882,147                      | (1,872,871)                    |
| Fredericksburg District                      | 9,885,523                    | 6,229,314                      | (1,662,309)                    |
| Culpeper District                            | 10,668,052                   | 8,720,598                      | (1,947,516)                    |
| Staunton District                            | 13,782,270                   | 10,444,565                     | (3,347,715)                    |
| Northern Virginia District                   | 32,581,229                   | 28,351,585                     | (4,009,834)                    |
| <b>TOTAL SECONDARY CONSTRUCTION</b>          | <b>\$144,057,900</b>         | <b>\$118,651,745</b>           | <b>(\$25,406,155) 13/</b>      |
| <b>URBAN CONSTRUCTION</b>                    |                              |                                |                                |
| Bristol District                             | \$3,580,879                  | \$3,311,013                    | (\$269,866)                    |
| Salem District                               | 11,308,942                   | 10,808,411                     | (702,531)                      |
| Lynchburg District                           | 6,783,931                    | 6,249,482                      | (534,479)                      |
| Richmond District                            | 15,111,585                   | 13,647,219                     | (1,464,376)                    |
| Suffolk District                             | 60,693,464                   | 68,290,549                     | (2,402,818)                    |
| Fredericksburg District                      | 1,037,520                    | 875,394                        | (162,126)                      |
| Culpeper District                            | 2,671,493                    | 2,473,028                      | (198,470)                      |
| Staunton District                            | 6,982,771                    | 6,794,187                      | (188,584)                      |
| Northern Virginia District                   | 11,034,805                   | 9,542,762                      | (1,492,053)                    |
| <b>TOTAL URBAN CONSTRUCTION</b>              | <b>\$118,835,400</b>         | <b>\$111,789,100</b>           | <b>(\$7,555,300)</b>           |

**DETAIL OF THE BASIS POINTS IMPACT  
ON INTEREST REVENUE**

**DETAIL OF THE BASIS POINTS IMPACT  
ON INTEREST REVENUE**

| <b>TRANSPORTATION TRUST FUND</b>   | <b>ALLOCATED<br/>1990-91</b> | <b>RECOMMENDED<br/>1991-92</b> | <b>INCREASE<br/>(DECREASE)</b> |
|------------------------------------|------------------------------|--------------------------------|--------------------------------|
| <b>INTEREST EARNINGS</b>           |                              |                                |                                |
| Mass Transit Fund                  | \$928,000                    | \$464,500                      | (\$463,500)                    |
| Airport Fund                       | 453,000                      | 292,000                        | (161,000)                      |
| Port Fund                          | 1,071,000                    | 667,000                        | (404,000)                      |
| Highway Fund                       | 13,147,000                   | 5,363,500                      | (7,783,500)                    |
| <b>TOTAL INTEREST EARNINGS</b>     | <b>15,599,000</b>            | <b>6,787,000</b>               | <b>(8,812,000)</b>             |
| <b>BASIS POINTS</b>                |                              |                                |                                |
| Mass Transit Fund                  | 52,800                       | 52,800                         | 0                              |
| Airport Fund                       | 15,100                       | 15,100                         | 0                              |
| Port Fund                          | 26,400                       | 26,400                         | 0                              |
| Highway Fund                       | 533,800                      | 533,800                        | 0                              |
| <b>TOTAL BASIS POINTS</b>          | <b>628,100</b>               | <b>628,100</b>                 | <b>0</b>                       |
| <b>NET INTEREST EARNINGS</b>       |                              |                                |                                |
| Mass Transit Fund                  | 875,200                      | 411,700                        | (463,500)                      |
| Airport Fund                       | 437,900                      | 276,900                        | (161,000)                      |
| Port Fund                          | 1,044,800                    | 640,600                        | (404,200)                      |
| Highway Fund                       | 12,813,200                   | 4,829,700                      | (7,983,500)                    |
| <b>TOTAL NET INTEREST EARNINGS</b> | <b>\$14,978,900</b>          | <b>\$6,158,900</b>             | <b>(8,812,000)</b>             |

**TOLL FACILITY OPERATIONS**  
**DULLES TOLL ROAD**  
**POWHITE PARKWAY EXTENSION TOLL ROAD**  
**RICHMOND-PETERSBURG TURNPIKE**

**DULLES TOLL ROAD**  
**"The Omar L. Hirst - Adelard L. Brault Expressway"**  
**STATEMENT OF ESTIMATED REVENUES AND EXPENSES**  
**JULY 1, 1991 - JUNE 30, 1992**

**ALLOCATION**

**FY 92 ESTIMATED REVENUE**

|                        |  |                     |
|------------------------|--|---------------------|
| Toll Revenues          |  | \$19,979,000        |
| Interest Earnings      |  | <u>2,867,000</u>    |
| <b>TOTAL AVAILABLE</b> |  | <b>\$22,745,000</b> |

**FY 92 EXPENDITURE BUDGET**

|   |                              |                         |
|---|------------------------------|-------------------------|
| <b>Revenue Fund</b>                         |                              |                         |
| Operation & Maintenance 1/<br>Indirect Cost | \$6,813,046<br><u>67,141</u> | 6,880,187               |
| <b>Total Operation &amp; Maintenance</b>    |                              | <b>6,880,187</b>        |
| <b>Reserve Maintenance</b>                  |                              | <b>660,000</b>          |
| <b>Debt Service Fund</b>                    |                              |                         |
| 1987 Refinancing Issue                      | 4,587,027                    |                         |
| 1988 Widening Issue                         | <u>3,134,943</u>             |                         |
| <b>Total Debt Service</b>                   |                              | <b><u>7,721,970</u></b> |

**NET AVAILABLE FOR IMPROVEMENTS** **7,482,844**

|  |                             |                         |
|--|-----------------------------|-------------------------|
| <b>FY 92 Funds for Improvements</b>  |                             |                         |
| 15% For Transit Improvements   |                             |                         |
| Dulles Corridor Study/Western Regional Park-and-Ride<br>For Other Transit Improvements | 100,000<br><u>1,022,427</u> | 1,122,427               |
| <b>Subtotal For Transit Improvements</b>   |                             | <b>1,122,427</b>        |
| <b>85% For Highway Improvements</b>  |                             | <b><u>6,360,417</u></b> |
| <b>Total FY 92 Funds for Improvements</b>  |                             | <b><u>7,482,844</u></b> |
| <b>TOTAL EXPENDITURES</b>  |                             | <b>\$22,745,000</b>     |

**FOOTNOTES -**

1/ Included is the cost of roadway maintenance which is provided by the Virginia Department of Transportation. Also, includes \$732,218 added by the 1991 General Assembly to pay for State Police Patrol Services on the toll road.



**DULLES TOLL ROAD**  
**The Omer L. Hirst - Adelard L. Brault Expressway**  
**OPERATION AND MAINTENANCE BUDGET**  
**JULY 1, 1991 - JUNE 30, 1992**

|  | ALLOCATED<br>1990-1991 | RECOMMENDED<br>1991-1992 | INCREASE<br>(DECREASE) |
|--|------------------------|--------------------------|------------------------|
| PERSONAL SERVICES<br>(Salaries, wages and fringe benefits)   | \$3,396,740            | \$3,839,484              | \$442,744              |
| CONTRACTUAL SERVICES<br>(Printing, telecommunications, highway<br>repair & maintenance)                                | 1,256,620              | 1,377,300                | 121,780                |
| SUPPLIES AND MATERIALS<br>(Uniforms, office supplies, building<br>and grounds materials)                               | 68,012                 | 69,100                   | 1,088                  |
| TRANSFER PAYMENTS<br>(Payments to substate entities & indirect cost<br>charge)   | 92,803                 | 97,141                   | 4,538                  |
| CONTINUOUS CHARGES<br>(Equipment rentals, water service, sewer service<br>and electrical service, State Police Patrol) | 629,831                | 1,442,337                | 812,406                |
| EQUIPMENT<br>(Office machines and office furniture)  | 23,705                 | 37,025                   | 13,320                 |
| PLANT AND IMPROVEMENTS<br>(Minor building improvements)  | 95,200                 | 0                        | (95,200)               |
| OBLIGATIONS<br>(Paying Agent Fees)   | 0                      | 17,800                   | 17,800                 |
| <b>TOTAL - OPERATION AND MAINTENANCE</b>   | <b>\$6,661,711</b>     | <b>\$6,880,187</b>       | <b>\$1,318,476</b>     |

**POWHITE PARKWAY EXTENSION TOLL ROAD  
STATEMENT OF ESTIMATED REVENUES AND EXPENSES  
JULY 1, 1991 - JUNE 30, 1992**

**ALLOCATION**

**FY 92 ESTIMATED REVENUE**

|                                      |  |                    |
|--------------------------------------|--|--------------------|
| Toll Revenues                        |  | \$6,829,000        |
| Interest Earnings                    |  | 0                  |
| Toll Facilities Revolving Account 1/ |  | 3,167,493          |
| <b>TOTAL AVAILABLE</b>               |  | <b>\$9,996,493</b> |

**FY 92 EXPENDITURE BUDGET**

|  |             |                    |
|--|-------------|--------------------|
| Revenue Fund                               |             |                    |
| Operation & Maintenance 2/                 | \$2,536,857 |                    |
| Indirect Cost                              | 22,749      |                    |
| Total Operation & Maintenance              |             | 2,559,606          |
| Reserve Maintenance Replacement Account 3/ |             | 0                  |
| Debt Service Fund                          |             | 6,836,887          |
| <b>TOTAL EXPENDITURES</b>                  |             | <b>\$9,496,493</b> |

**FOOTNOTES -**

1/ This allocation is provided by Section 33.1-28.03:4.

2/ Includes \$525,010 added by the 1991 General Assembly to pay for State Police Patrol Services on the toll road.  
Expenses do not include ordinary roadway maintenance. This will be budgeted and performed by the Virginia Department of Transportation in accordance with the Memorandum of Understanding.

3/ No maintenance replacement is anticipated in the toll facility for FY 92.  
Therefore, no deposit is necessary in accordance with the Memorandum of Understanding.

**POWHITE PARKWAY EXTENSION TOLL ROAD  
OPERATION AND MAINTENANCE BUDGET  
JULY 1, 1991 - JUNE 30, 1992**

|   | <b>ALLOCATED<br/>1990-1991</b> | <b>RECOMMENDED<br/>1991-1992</b> | <b>INCREASE<br/>(DECREASE)</b> |
|---|--------------------------------|----------------------------------|--------------------------------|
| <b>PERSONAL SERVICES</b><br>(Salaries, wages and fringe benefits)   | \$1,428,044                    | \$1,369,951                      | (\$58,093)                     |
| <b>CONTRACTUAL SERVICES</b><br>(Printing, telecommunications, highway<br>repair & maintenance)                                | 391,200                        | 406,200                          | 15,000                         |
| <b>SUPPLIES AND MATERIALS</b><br>(Uniforms, office supplies, building<br>and grounds materials)                               | 60,500                         | 44,600                           | (15,900)                       |
| <b>TRANSFER PAYMENTS</b><br>(Payments to substrate entities & indirect cost<br>charge)  | 20,860                         | 22,749                           | 1,889                          |
| <b>CONTINUOUS CHARGES</b><br>(Equipment rentals, water service, sewer service<br>and electrical service, State Police Patrol) | 139,078                        | 711,208                          | 572,130                        |
| <b>EQUIPMENT</b><br>(Office machines and office furniture)  | 3,500                          | 2,500                            | (1,000)                        |
| <b>PLANT AND IMPROVEMENTS</b><br>(Minor building improvements)  | 0                              | 0                                | 0                              |
| <b>OBLIGATIONS</b><br>(Paying Agent Fees)   | 0                              | 2,500                            | 2,500                          |
| <b>TOTAL - OPERATION AND MAINTENANCE</b>  | <b>\$2,033,180</b>             | <b>\$2,559,606</b>               | <b>\$526,426</b>               |

**RICHMOND PETERSBURG TURNPIKE  
STATEMENT OF ESTIMATED REVENUES AND EXPENSES  
JULY 1, 1991 -- JUNE 30, 1992**

**ALLOCATION**

**FY 92 ESTIMATED REVENUE**

|                        |  |                     |
|------------------------|--|---------------------|
| Toll Revenues          |  | \$34,807,000        |
| Interest Earnings      |  | <u>800,000</u>      |
| <b>TOTAL AVAILABLE</b> |  | <b>\$35,407,000</b> |

**FY 92 EXPENDITURE BUDGET**

|                                      |                |                             |
|--------------------------------------|----------------|-----------------------------|
| Revenue Fund                         |                |                             |
| Operation & Maintenance              | \$10,268,117   |                             |
| Indirect Cost                        | <u>106,428</u> |                             |
| Total Operation & Maintenance        |                | 10,374,543                  |
| Reserve Maintenance Fund             |                | 1,500,000                   |
| Construction Fund                    |                | 23,432,457                  |
| Funding for Senate Bill 304 Projects |                | <u>                    </u> |
| <b>TOTAL EXPENDITURES</b>            |                | <b>\$35,407,000</b>         |

**RICHMOND PETERSBURG TURNPIKE  
OPERATION AND MAINTENANCE BUDGET  
JULY 1, 1991 - JUNE 30, 1992**

|  | ALLOCATED<br>1990-1991 | RECOMMENDED<br>1991-1992 | INCREASE<br>(DECREASE) |
|--|------------------------|--------------------------|------------------------|
| <b>PERSONAL SERVICES</b><br>(Salaries, wages and fringe benefits)  | \$8,041,199            | \$7,150,804              | (\$1,890,395)          |
| <b>CONTRACTUAL SERVICES</b><br>(Printing, telecommunications, highway<br>repair & maintenance)           | 1,092,500              | 980,100                  | (412,400)              |
| <b>SUPPLIES AND MATERIALS</b><br>(Uniforms, office supplies, building<br>and grounds materials)          | 160,400                | 142,500                  | (17,900)               |
| <b>TRANSFER PAYMENTS</b><br>(Payments to subservice entities & indirect cost<br>charge)                  | 154,135                | 106,428                  | (47,708)               |
| <b>CONTINUOUS CHARGES</b><br>(Equipment rentals, water service, sewer service<br>and electrical service) | 1,036,307              | 2,263,983                | 1,227,676              |
| <b>EQUIPMENT</b><br>(Office machines and office furniture)   | 33,500                 | 22,250                   | (11,250)               |
| <b>PLANT AND IMPROVEMENTS</b><br>(Minor building improvements)   | 5,000                  | 5,000                    | 0                      |
| <b>OBLIGATIONS</b><br>(Paying Agent Fees)  | 0                      | 3,500                    | 3,500                  |
| <b>TOTAL - OPERATION AND MAINTENANCE</b>   | <b>\$11,623,041</b>    | <b>\$10,374,543</b>      | <b>(\$1,148,498)</b>   |

**DIVISION OF FLEET MANAGEMENT**  
**OPERATING BUDGET**

**DEPARTMENT OF TRANSPORTATION  
DIVISION OF FLEET MANAGEMENT  
OPERATING BUDGET  
JULY 1, 1991 - JUNE 30, 1992**

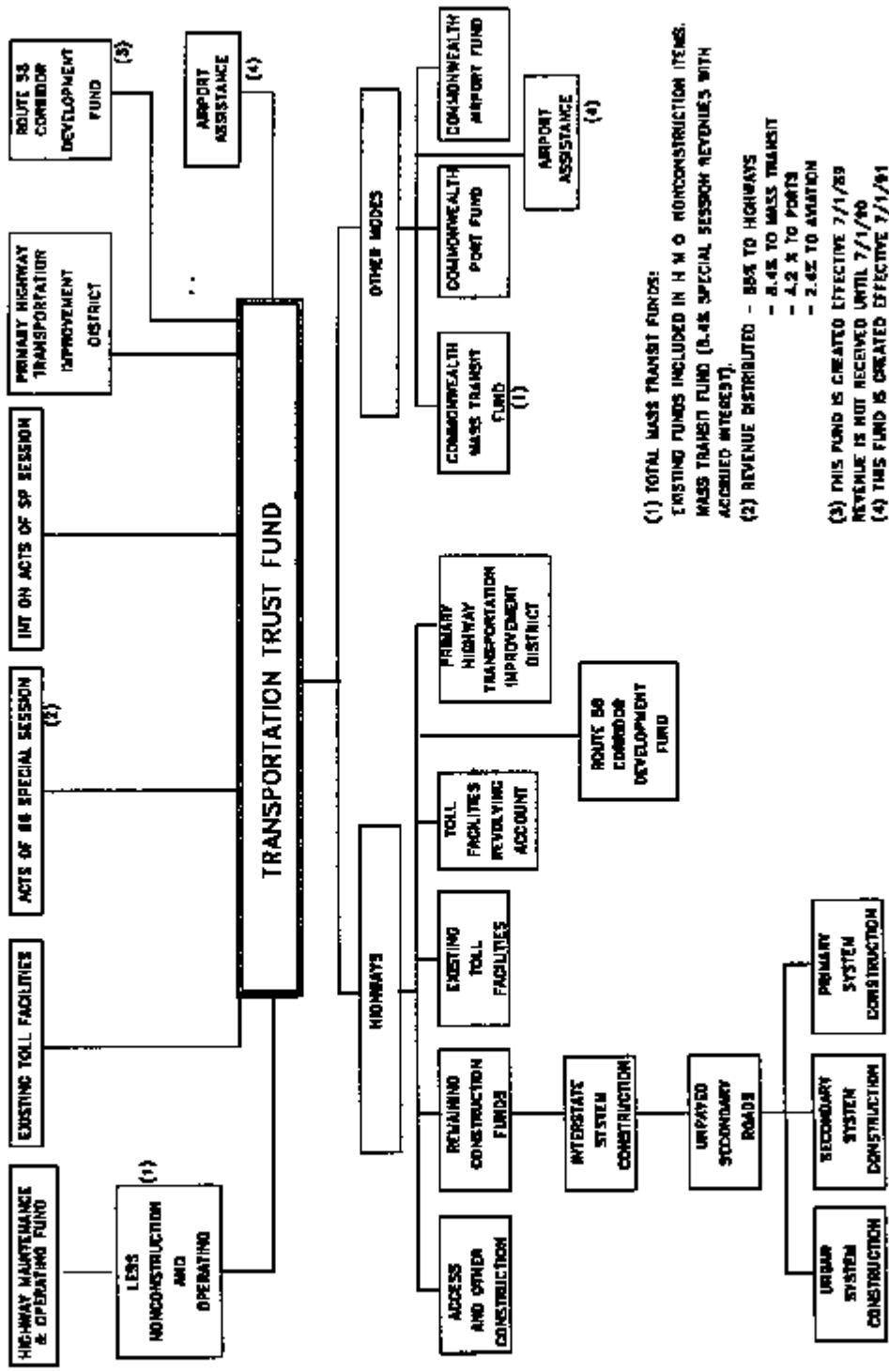
|  | <b>ALLOCATED<br/>1991-1992</b> | <b>RECOMMENDED<br/>1991-1992</b> | <b>(INCREASE<br/>(DECREASE))</b> |
|--|--------------------------------|----------------------------------|----------------------------------|
| <b>PERSONAL SERVICES</b><br>(Salaries, wages and fringe benefits)  | \$780,183                      | \$779,912                        | (\$10,281)                       |
| <b>CONTRACTUAL SERVICES</b><br>(Printing, telecommunications, highway<br>repair & maintenance)           | 2,086,002                      | 2,189,578                        | 93,576                           |
| <b>SUPPLIES AND MATERIALS</b><br>(Uniforms, office supplies, building<br>and grounds materials)          | 1,896,082                      | 1,897,136                        | 109,054                          |
| <b>CONTINUOUS CHARGES</b><br>(Equipment rentals, water service, sewer service<br>and electrical service) | 637,237                        | 686,716                          | 49,479                           |
| <b>EQUIPMENT</b><br>(Office machines, office furniture,<br>motor vehicles)                               | 4,120,366                      | 3,022,768                        | (1,097,607)                      |
| <b>GENERAL FUND TRANSFER</b>   | <u>0</u>                       | <u>500,000</u>                   | <u>500,000</u>                   |
| <b>TOTAL OPERATING BUDGET</b>  | <b>\$8,341,879</b>             | <b>\$8,076,100</b>               | <b>(\$265,779)</b>               |
| <b>REIMBURSABLE EXPENSES</b>   | <b>(\$8,341,879)</b>           | <b>(\$8,076,100)</b>             | <b>\$265,779</b>                 |

In accordance with the Appropriation Act, the Division of Fleet Management is an internal service fund with a sum sufficient allocation.

**COMMONWEALTH TRANSPORTATION FUNDS  
DISTRIBUTION**

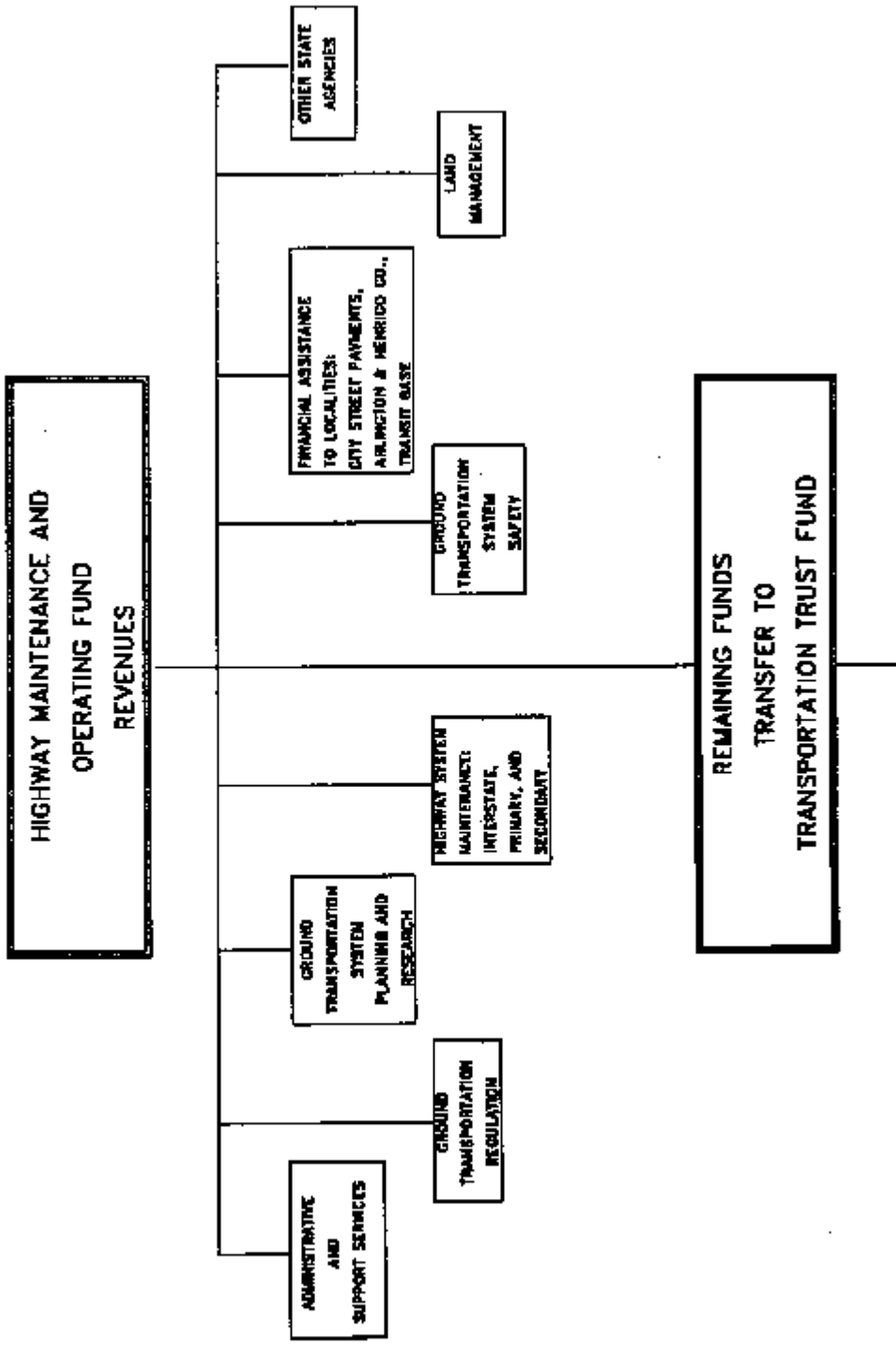


# TRANSPORTATION TRUST FUND DISTRIBUTION FISCAL YEAR 1991-92

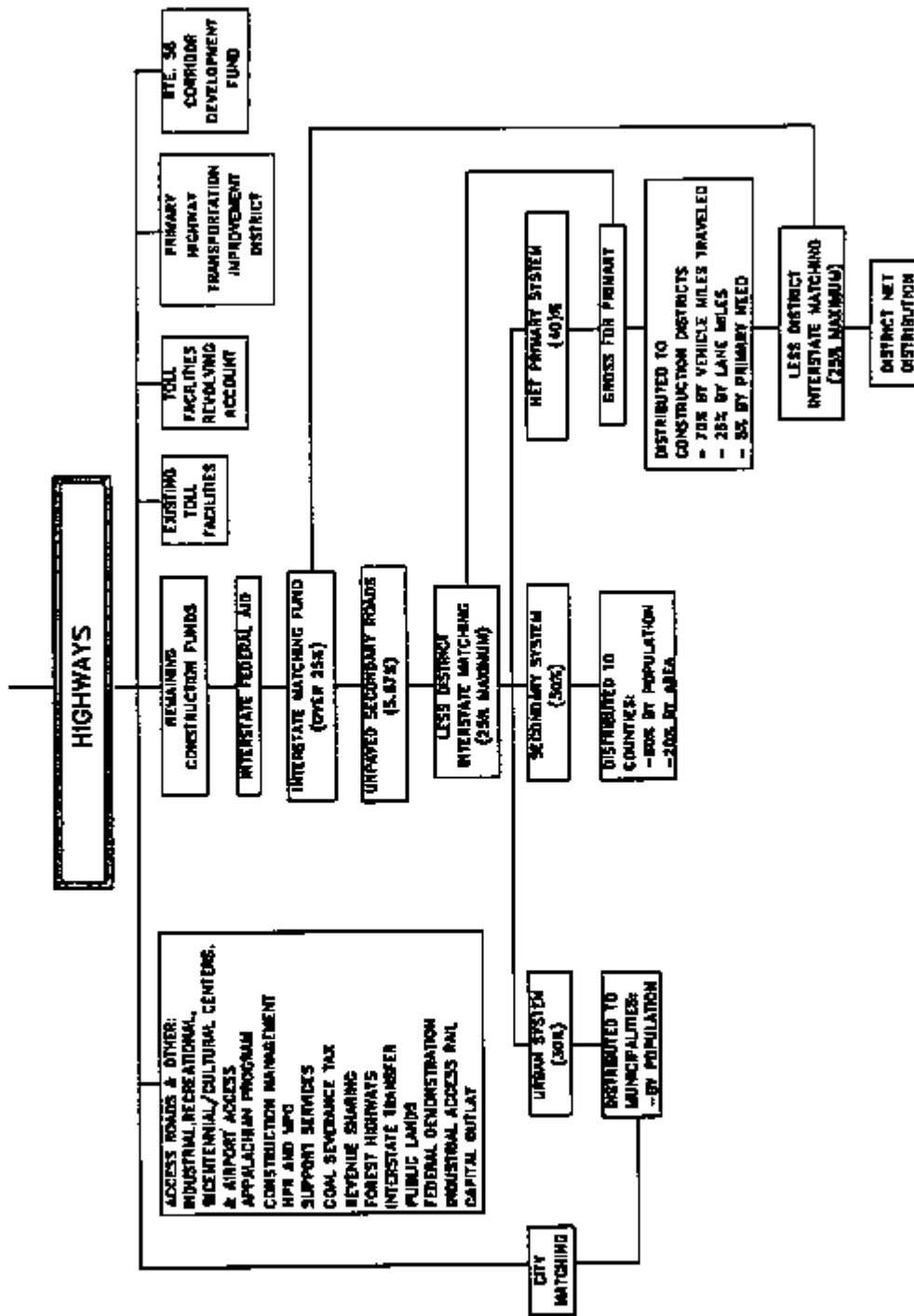


- (1) TOTAL MASS TRANSIT FUNDS:  
EXISTING FUNDS INCLUDED IN H M O NONCONSTRUCTION ITEMS.  
MASS TRANSIT FUND (0.4% SPECIAL SESSION REVENUES WITH ACCRUED INTEREST).
- (2) REVENUE DISTRIBUTED - 88% TO HIGHWAYS  
- 8.4% TO MASS TRANSIT  
- 4.2% TO PORTS  
- 2.4% TO AVIATION
- (3) THIS FUND IS CREATED EFFECTIVE 7/1/89  
REVENUE IS NOT RECEIVED UNTIL 7/1/90
- (4) THIS FUND IS CREATED EFFECTIVE 7/1/91

HIGHWAY MAINTENANCE AND OPERATING  
 FUND DISTRIBUTION  
 FISCAL YEAR 1991-92



**DISTRIBUTION OF HIGHWAY  
TRANSPORTATION TRUST FUND REVENUES  
FISCAL YEAR 1991-92**



## GENERAL NOTES AND FOOTNOTES

### GENERAL NOTES:

o The "Allocated 1990-91" column represents the allocations approved by the Commonwealth Transportation Board in October, 1990. The revenue figures for FY 90-91 are based upon the August, 1990 interim revenue estimate. The FY 90-91 allocations reflect the first round budget reduction plan for the 1990-92 Biennium. These reductions are detailed in the FY 91 October revised budget. The "Recommended 1991-92" column reflects the revenues from the Official December 1990 State Revenue Estimate and incorporates the two rounds of budget reductions for FY-92.

o The 1991 Appropriation Act requires the transfer to the General Fund the amount of savings generated from the early retirement program enacted by the 1991 General Assembly. At such time the actual amount to be transferred is known, the allocations to the appropriate programs and subprograms will be reduced to provide the funds required for the transfer to the General Fund.

### FOOTNOTES:

1/ The unallocated balance from FY 90 was included in the revised FY 91 budget approved by the Commonwealth Transportation Board in October 1990. Any subsequent variances will be included in the next year's budget.

2/ This figure includes the apportionments from the 1990 Interstate Cost Estimate (ICE) that is anticipated to be the funding to complete Virginia's interstate system.

3/ This is additional apportionment funds redistributed by FHWA from the 1990 minimum allocation formula.

4/ This is FEMA funds received from damage sustained as a result of Hurricane Jerry striking Southwest Virginia in 1989. These funds are allocated to the Highway System Maintenance Program.

5/ The 1991 Appropriation Act provides for the reduction in the amount of General Funds available for the U. S. Route 58 Corridor Development Fund. The difference in the \$40 million statutory transfer, plus interest, and the amount allocated is to revert to the General Fund.

6/ The 1991 Appropriation Act provides for \$9.6 million in General Funds for use by VDOT in the event the United Airlines facility is constructed in Virginia.

7/ The 1991 Appropriation Act designated this transfer to support the continued operation of the State's Welcome Centers.

8/ The program reductions represent the contribution from the administrative and other transportation program reductions made in FY 91 and carried into FY 92 and the elimination of the Highway Maintenance and Operating Fund portion of the December, 1990, 2% pay increase.

GENERAL NOTES AND FOOTNOTES (cont.)

FOOTNOTES:

8/ The 1991 Appropriation Act requires the Transportation Trust Fund to reimburse the Division of Risk Management for the Commuter Rail Liability Fund.

10/ The amount includes the \$350,000 required to rebuild the Dublin Area Headquarters that was destroyed by a tornado.

11/ The program reductions represent the contribution to the General Fund for the construction management reductions made in FY 91 and carried into FY 92 and the elimination of the Transportation Trust Fund portion of the December, 1990, 2% pay increase.

12/ The 1991 Appropriation Act reduced these access road programs as part of the VDOT budget reduction plan for the 1990-92 biennium.

13/ The distribution of the allocation is \$16,232,855 less than the amount allocated on page 22. The October 1990 revised FY 91 allocation was not adjusted in the individual county secondary road budgets. The FY 91 revision is now reflected in the FY 92 allocations. This procedure is necessary to properly implement the secondary road improvement budgets for all the counties.

5/16/91

Following presentation by Mr. J. G. Ripley, Director of Programming and Planning, on motion of Mr. Bacon, seconded by Mr. Davies, the Tentative Allocation of Funds for fiscal year 1991-92 for Interstate, Primary and Urban Highway Systems, Public Transit, Ports and Airports; and the Six Year Improvement Program for fiscal years 1991-92 through 1996-97 for Interstate, Primary, Urban and Secondary Highway Systems, Public Transit, Ports and Airports, were approved.

Motion carried.

Moved by Mr. Warner, seconded by Mr. Davies, that

WHEREAS, the Commonwealth of Virginia is apportioned federal aid each fiscal year for public transportation in urbanized areas of the State with populations between 50,000 and 200,000 under Section 9 of the Urban Mass Transportation Act (UMTA) of 1964 as amended; and

WHEREAS, the Commonwealth Transportation Board has the responsibility for approving the allocation of UMTA Section 9 funds among these urbanized areas even though such funds are provided by UMTA directly to recipients and, therefore, are not included in the state budget; and

WHEREAS, such allocations are made upon an equitable distribution to serve the needs of each area and the allocations are to be presented to UMTA in an annual program of projects; and

WHEREAS, the Virginia Department of Transportation has developed a distribution of Section 9 funds for fiscal year 1992 in consultation with the recipients of these funds and this distribution is reflected in the numbers shown below;

NOW, THEREFORE, BE IT RESOLVED, that the following program of projects shall serve as the fiscal year 1992 distribution for the Governor's Apportionment of UMTA Section 9 funds for the Commonwealth of Virginia; and

5/16/91

BE IT FURTHER RESOLVED, that the Commissioner shall submit the Section 9 program of projects to UMTA and is authorized to amend the program as may be necessary during fiscal year 1992.

UMTA Section 9 Operating Assistance

|                                   |             |
|-----------------------------------|-------------|
| Greater Roanoke Transit Company   | \$916,984   |
| Greater Lynchburg Transit Company | \$857,369   |
| Petersburg Area Transit Company   | \$267,167   |
| City of Bristol, Virginia         | \$78,031    |
| Charlottesville Transit System    | \$505,312   |
| JAUNT, Inc.                       | \$91,824    |
| Total                             | \$2,716,587 |

UMTA Section 9 Capital Assistance

No Capital Grants are proposed for FY 92

Motion carried.

Moved by Mr. Warner, seconded by Mr. Davies, that

WHEREAS, the Commonwealth of Virginia is apportioned federal aid each fiscal year for public transportation in non-urbanized areas of the State under Section 18 of the Urban Mass Transportation Act (UMTA) of 1964 as amended; and

WHEREAS, the Commonwealth Transportation Board has the responsibility for approving the allocation of UMTA Section 18 funds among the eligible recipients and authorizing the submission of a federal application by the Virginia Department of Transportation; and

WHEREAS, the Department has solicited applications from all eligible recipients, thoroughly reviewed and evaluated the applications received, and has incorporated the recommended grants into a program of projects for fiscal year 1992;

NOW, THEREFORE, BE IT RESOLVED that the program of projects shown below shall serve as the fiscal year 1992 distribution of UMTA Section 18 funds for Virginia; and

5/16/91

BE IT FURTHER RESOLVED, that the Commissioner shall submit the program of projects to OMTA and is authorized to amend the program as may be necessary during fiscal year 1992.

|                               | <u>Operat.</u><br><u>Assist.</u> | <u>Capital</u><br><u>Assist.</u> | <u>Total</u>       |
|-------------------------------|----------------------------------|----------------------------------|--------------------|
| Blacksburg                    | \$302,171                        | \$72,218                         | \$374,389          |
| Cent. Piedmont Action Council | \$124,408                        | \$22,440                         | \$146,808          |
| Clearfork Community Assoc.    | \$22,140                         | \$0                              | \$22,140           |
| Colonial Beach                | \$31,778                         | \$0                              | \$31,778           |
| District III Govt. Coop.      | \$98,330                         | \$0                              | \$98,330           |
| Harrisonburg                  | \$183,200                        | \$78,400                         | \$261,600          |
| James City County             | \$185,538                        | \$72,000                         | \$257,538          |
| JAUNT, Inc.                   | \$208,341                        | \$31,200                         | \$239,541          |
| Mt. Empire Older Citizens     | \$109,184                        | \$0                              | \$109,184          |
| Rappahannock-Rapidan CSC      | \$99,800                         | \$24,000                         | \$123,800          |
| Winchester                    | \$191,800                        | \$0                              | \$191,800          |
| <b>TOTAL</b>                  | <b>\$1,556,690</b>               | <b>\$300,218</b>                 | <b>\$1,856,908</b> |

Rural Technical Assistance Program

|                      |                 |
|----------------------|-----------------|
| Technical Assistance | \$40,000        |
| Training             | \$50,000        |
| Program Reserve      | <u>\$3,204</u>  |
| <b>TOTAL</b>         | <b>\$93,204</b> |

Motion carried.

Moved by Mr. Warner, seconded by Mr. Davies, that

WHEREAS, Chapter 723, Item 743 of the Acts of the 1991 General Assembly provides financial assistance for public transportation for fiscal year 1992; and

WHEREAS, this Chapter authorizes the Commonwealth Transportation Board to distribute these funds as public transportation grants in accordance with a distribution methodology defined in Chapter 58.1-2425, E.3 of the Code of Virginia and to award incentive grants for capital improvements which serve persons with disabilities; and

WHEREAS, the Virginia Department of Transportation has prepared a program of public transportation projects for fiscal year 1992 which



5/16/91

provides formula assistance, capital grants, and special programs grants in accordance with the provisions of these Chapters; and

WHEREAS, each of the recipients identified in the program of projects has requested and is eligible to receive state aid, and these requests have been reviewed and found to be reasonable and appropriate by the Department;

NOW, THEREFORE, BE IT RESOLVED that the Department is authorized to approve state grants for public transportation in the amounts shown, for the purposes specified, and to the recipients identified on the attached program of projects; and that the Commissioner is authorized to amend the amounts of assistance shown, if necessary, to match revisions to these projects; and

BE IT FURTHER RESOLVED that the Commissioner is authorized to obligate additional assistance for new grants under this program of projects up to a limit of \$15,000 in state funds for each grant.

Motion carried.

## ATTACHMENT

## FINANCIAL ASSISTANCE TO MASS TRANSIT - FY92 PROGRAM OF PROJECTS

| STATE FINANCIAL ASSISTANCE                       |                     |   |                    | 5/6/91              |
|--|---------------------|---|--------------------|---------------------|
| Recipient  | Formula Assistance  | Transportation for the Disabled Incentive |                    | TOTAL               |
|  |                     | Capital                                   | Capital            |                     |
| Virginia Railway Express (NVTG/PRTC)             | \$2,034,010         | \$3,643,519                               | \$0                | \$5,677,529         |
| Northern Virginia Transportation Comm.           | \$35,688,297        | \$13,140,289                              | \$0                | \$48,828,586        |
| Prince William County                            | \$506,289           | \$0                                       | \$0                | \$506,289           |
| Tidewater Transportation District Comm.          | \$5,027,656         | \$56,500                                  | \$550,050          | \$5,634,206         |
| Richmond   | \$4,681,755         | \$391,910                                 | \$57,000           | \$5,130,675         |
| Peninsula Transportation District Comm.          | \$1,877,645         | \$107,800                                 | \$285,000          | \$2,270,445         |
| Roanoke  | \$710,928           | \$0                                       | \$0                | \$710,928           |
| Lynchburg  | \$592,747           | \$0                                       | \$0                | \$592,747           |
| Petersburg                                       | \$217,768           | \$0                                       | \$0                | \$217,768           |
| Bristol  | \$51,320            | \$0                                       | \$85,500           | \$136,820           |
| Charlottesville                                  | \$321,431           | \$4,938                                   | \$26,600           | \$352,969           |
| Danville   | \$171,809           | \$0                                       | \$0                | \$171,809           |
| Blacksburg                                       | \$209,914           | \$4,160                                   | \$9,247            | \$223,321           |
| Central Piedmont Action Council (Amelia Co)      | \$54,657            | \$0                                       | \$5,320            | \$69,977            |
| Clearfork Community Assoc. (Tazewell Co)         | \$12,393            | \$0                                       | \$0                | \$12,393            |
| Colonial Beach                                   | \$16,989            | \$0                                       | \$0                | \$16,989            |
| District III Governmental Cooperative            | \$45,946            | \$0                                       | \$0                | \$45,946            |
| Harrisonburg                                     | \$128,871           | \$7,000                                   | \$5,320            | \$141,191           |
| James City County                                | \$116,308           | \$7,500                                   | \$2,850            | \$126,658           |
| JAUNT, Inc.                                      | \$289,665           | \$3,900                                   | \$152,950          | \$446,515           |
| Mountain Empire Older Citizens (Wise Co)         | \$54,808            | \$0                                       | \$0                | \$54,808            |
| Rappahanock-Rapidan CSC                          | \$46,333            | \$0                                       | \$5,700            | \$52,033            |
| Winchester                                       | \$112,780           | \$0                                       | \$0                | \$112,780           |
| Suchanan County                                  | \$84,762            | \$50,000                                  | \$57,450           | \$212,212           |
| Farmville  | \$21,953            | \$0                                       | \$105,023          | \$126,976           |
| Greene County                                    | \$31,217            | \$0                                       | \$27,550           | \$58,767            |
| Russell County                                   | \$39,276            | \$0                                       | \$0                | \$39,276            |
| Tazewell County                                  | \$17,839            | \$0                                       | \$0                | \$17,839            |
| Dickenson County                                 | \$9,664             | \$0                                       | \$57,000           | \$66,664            |
| <b>Statewide Totals:</b>                         | <b>\$53,185,040</b> | <b>\$17,427,516</b>                       | <b>\$1,442,560</b> | <b>\$72,055,116</b> |
| <b>Special Projects Subprogram Total:</b>        |                     |   |                    | <b>\$1,085,410</b>  |
| <b>TOTAL STATE AID TO PUBLIC TRANSPORTATION:</b> |                     |   |                    | <b>\$73,140,526</b> |

## ATTACHMENT

## FINANCIAL ASSISTANCE TO MASS TRANSIT - FY92 PROGRAM OF PROJECTS

| SPECIAL PROJECTS SUBPROGRAM                                     |  |             |
|---|--|-------------|
| Independent Ridesharing Program Grants                          |  |             |
| Recipient   |  | Amount      |
| City of Alexandria  |  | \$67,500    |
| Arlington County  |  | \$45,885    |
| Council of Governments  |  | \$99,300    |
| Fairfax County  |  | \$162,712   |
| Lord Fairfax Planning District Commission                       |  | \$26,780    |
| Middle Peninsula Planning District Commission                   |  | \$23,400    |
| Northern Neck Planning District Commission                      |  | \$14,500    |
| RADCO Planning District Commission                              |  | \$70,500    |
| Roanoke-Rapids Planning District Commission                     |  | \$14,800    |
| RIDEFINDERS (Richmond Area)                                     |  | \$148,000   |
| Loudoun County  |  | \$58,000    |
|   | TOTAL                                      | \$731,377   |
| Experimental/Demonstration Public Transportation Project Grants |  |             |
| Recipient   | Project                                    | Amount      |
| Town of Blacksburg  | Paratransit Coordinator                    | \$57,095    |
| Greater Richmond Transit Co.                                    | Automatic Ticketing & Distribution Project | \$25,650    |
| Loudoun County  | Transit Service Development                | \$45,505    |
| City of Fredericksburg  | Joint-Use Park and Ride Development        | \$42,710    |
| VDOT/Rail & Public Tr. Div.                                     | Interns and Apprentices                    | \$50,000    |
|   | TOTAL                                      | \$220,960   |
| Public Transportation Promotion and Operations Studies Grants   |  |             |
| Recipient   | Project                                    | Amount      |
| VDOT/Rail & Public Tr. Div.                                     | State Bus Drivers & Mechanics Rodeo        | \$10,000    |
| VDOT/Rail & Public Tr. Div.                                     | Transit Marketing Program                  | \$52,445    |
| VDOT/Rail & Public Tr. Div.                                     | Mechanics Training Program                 | \$15,000    |
| VDOT/Rail & Public Tr. Div.                                     | Public Transit Facilities Sign Program     | \$15,000    |
| VDOT/Rail & Public Tr. Div.                                     | NTAP Contribution (AASHTO)                 | \$2,000     |
| Tidewater TDC   | Transit Development Plan                   | \$10,000    |
| VDOT/Rail & Public Tr. Div.                                     | Section B Local Match                      | \$28,628    |
|   |  | \$133,073   |
| SPECIAL PROJECTS SUBPROGRAM TOTAL:                              |  | \$1,065,410 |

5/16/91

Moved by Mr. Warner, seconded by Dr. Thomas, that

WHEREAS, the need for an extension of the Dulles Toll Road from Route 28 to Leesburg has long been recognized by the Department of Transportation and the localities served by such extension; and

WHEREAS, in 1988 the General Assembly passed legislation titled the "Virginia Highway Corporation Act of 1988" (the Act) which Act of the General Assembly found that there was a compelling public need for rapid construction of safe and efficient highways for the purpose of travel within the Commonwealth and that it was in the public interest to encourage construction of additional, safe, convenient, and economic highway facilities by private parties, provided that adequate safeguards are available against default in the construction and operation obligations of the operators of roadways; such public interest to include without limitation the relative speed and relative cost efficiency of private construction of the project; and

WHEREAS, the Act provides that the State Corporation Commission shall examine the toll structure, financing costs, and rate of return proposed by the operator of a private toll road and determine that approval of the application is in the public interest including without limitation the relative speed and relative cost efficiency of private construction of the project; and

WHEREAS, the Act provides that the Commonwealth Transportation Board shall approve the project, the project construction costs, the location and design of the roadway, and its connection with any road under the jurisdiction of the board, at proper and convenient places, in order to provide for the convenience of the public; and

WHEREAS, the Board was further charged under the Act with approving the project and its interconnections with other roads if there is a public need for a road project of the type proposed and the project and its interconnections are compatible with the existing road network; it shall approve the project construction cost if reasonable; and, in making its determinations, the Board shall keep in mind the public interest, which may include, without limitation, such considerations as the relative speed

5/16/91

of the construction of the project and the allocation of the technical, financial and human resources of the Department; and

WHEREAS, the approval of the Board is contingent and conditioned by law upon subsequent compliance by the applicant with a Comprehensive Agreement to be entered into between the operator of the private toll road and the Department of Transportation; and

WHEREAS, on August 30, 1988, a location hearing for the construction of an extension of the Dulles Toll Road by the Virginia Department of Transportation was held; and

WHEREAS, on November 19, 1988, the Commonwealth Transportation Board approved the location of an extension of the Dulles Toll Road from Route 28 to Leesburg; and

WHEREAS, on May 31 and June 1, 1989, information meetings were held in Fairfax and Loudoun Counties, Virginia to discuss the construction of the extension of the Dulles Toll Road by a private operator; and

WHEREAS, on June 6 and June 7, 1989, public hearings were held in Fairfax and Loudoun Counties to receive input from the public as to the construction of an extension of the Dulles Toll Road by the Toll Road Corporation of Virginia (TRCV); and

WHEREAS, Resolutions have been received from the Town of Leesburg, the County of Loudoun and the MWA and testimony from the County of Fairfax relative to the application submitted by TRCV; and

WHEREAS, the Commonwealth Transportation Board approved on July 20, 1989, by Resolution, the application of the TRCV to construct and operate the Dulles Toll Road Extension (DTRE) from Route 28 to Leesburg; and

WHEREAS, such resolution was amended at the request of TRCV on May 17, 1990; and

WHEREAS, the State Corporation Commission, acting pursuant to §56-539 of the Act, issued a Certificate of Authority to TRCV on July 6, 1990 to build and operate the DTRE; and

5/16/91

WHEREAS, TRCV desires to make certain changes in the design and location of the DTRE in order to comply with its needs and the conditions of the Metropolitan Washington Airports Authority (MWAA), the United States Army Corps of Engineers regarding wetlands, and other governmental requirements, and TRCV desires to defer the date of completion of construction of DTRE, and has and will incur additional costs in order to comply with such changes; and

WHEREAS, TRCV desires a change in alignment that exceeds 1,000 feet due to the flood plain involvement and wetland impact in the area of Horsepen Run, located on the Dulles Airport Property, a shift in the roadway position to the northeast for a distance of approximately 1,200 feet beyond that originally shown; and

WHEREAS, the Commonwealth Transportation Board has further reviewed the application at several meetings prior to the date of this action;

NOW, THEREFORE, BE IT RESOLVED, by the Commonwealth Transportation Board that the project, the project construction costs as specified in following paragraph 5, as well as the project location, and the project design of the Dulles Toll Road Extension, and its connections with other roads under the jurisdiction of the Commonwealth Transportation Board all as shown in concept on 200-scale preliminary plans designated VDOT Project No. 0267-053-102-101, dated May 1, 1991, revised May 16, 1991 by Dewberry & Davis are hereby approved subject to: (1) the review and approval by VDOT of a Comprehensive Agreement containing terms satisfactory to the Department; and (2) further compliance with all terms of the Act and the laws of the Commonwealth.

BE IT FURTHER RESOLVED, in addition to the requirement of the Comprehensive Agreement, and pursuant to provisions set out in § 56-549 of the Code of Virginia, the following provisions shall be met by TRCV:

1. TRCV shall have construction of the Dulles Toll Road Extension substantially complete and open to traffic no later than December 31, 1993, unless delays in such construction are beyond the control of the TRCV, but within the time limit of § 56-549 of the Act.

5/16/91

2. Any minor and necessary changes from the specific alignment or design shown by TRCV on aforementioned 200-scale plans must be approved by VDOT, and any shift in such alignment in excess of 1,000 feet from the centerline or design changes not consistent with the 200-scale plans shall be submitted to the Commonwealth Transportation Board for action.
3. KTRCV design should incorporate to the extent possible the concerns of Loudoun County, Fairfax County, the Town of Leesburg, and the MWAA not further specified in this Resolution. The Department will coordinate the development of the Comprehensive Agreement with the appropriate jurisdictions.
4. a. The design for the interchanges on the DTRE shall be in accordance with the design concept shown on the aforementioned 200-scale plans. The designs of the interchanges employ high-capacity, diamond-type interchanges including loops for critical movements. Further land reservation by Loudoun County or others for the desired intermediate interchange design, characterized by expansion of the diamond interchanges to spread diamonds of a higher traffic volume type, will be implemented when possible through cooperative efforts of TRCV, VDOT, Loudoun County, the Town of Leesburg, and respective land owners.  
b. The connection of the western end of the DTRE shall allow for the future extension of the roadway northward into the Town of Leesburg.  
c. The interchange at the eastern connection to the existing Dulles Toll Road shall provide: 1) connections to and from the west to Dulles Airport; 2) a full movement interchange with Route 28 except for the southbound 28 to westbound DTRE movement and return; 3) connections to the existing Dulles Toll Road with provisions for collection of tolls by TRCV at its facilities on behalf of the Commonwealth;

5/15/91

and 4) a flyover directional ramp from northbound Route 28 into Dulles Airport (cost not to exceed \$3,600,000 from Route 28 Tax District Bond proceeds). Nothing herein shall preclude VDOT from compensating TRCV for the collection of tolls for existing Dulles Toll Road on behalf of the Commonwealth or entering into a joint management agreement.

5. TRCV project costs incurred through the completion of construction shall not exceed \$292.8 million. Provisions shall be included in the Comprehensive Agreement for the Department's review and approval of design changes, inspection of construction, and related increases in construction costs if necessary.
6. TRCV shall secure and maintain a public liability policy or policies sufficient in the judgment of the VDOT Commissioner to indemnify VDOT and the Commonwealth Transportation Board from any and all liability, if TRCV enters into an agreement whereby VDOT performs construction, operation or maintenance activities on behalf of TRCV on the DTRE.

BE IT FURTHER RESOLVED, that the approval by the Commonwealth Transportation Board is subject to the reimbursement of all costs incurred by VDOT which are reimbursable pursuant to the Act and specified in the Comprehensive Agreement. Such reimbursement shall be made within 30 days after closing of initial construction financing.

BE IT FURTHER RESOLVED, that should the Certificate of Authority issued by the State Corporation Commission be transferred to another operator pursuant to § 56-539 of the Act, such operator shall succeed to all rights and obligations contained herein.

BE IT FURTHER RESOLVED, that prior Resolutions of July 20, 1989 and May 17, 1990 approving the DTRE are hereby superseded by this Resolution.

Motion carried. Mr. Waldman abstained.



5/16/91

Motion was made by Dr. Howlette, seconded by Mr. Davies to cancel the project advertisement for the replacement of the Horseshoe Bridge, Route 686, Hanover County (Project 0686-042-209, C501, C502, B624. Mr. Waldman asked that Dr. Howlette amend his motion to request the staff of the Department of Transportation to (1) undertake periodic inspections of the structure, (2) obtain and review traffic use information, and (3) revisit the replacement issue should the Hanover Board of Supervisors wish them to.

Motion carried. Messrs. Smalley and Bacon, Dr. Thomas and Mrs. Kincheloe, voting no.

Meeting adjourned at 11:50 a.m.

The next meeting will be held in Richmond, Virginia on June 20, 1991.

Approved:

\_\_\_\_\_  
Chairman

Attested:

\_\_\_\_\_  
Secretary