

A G E N D A

MEETING OF THE COMMONWEALTH TRANSPORTATION BOARD

**Richmond, Virginia
June 15, 1989
10:00 A.M.**

1. Public Comment
2. Action on Permits Issued and Canceled from May 18, 1989 to June 14, 1989
3. Action on Discontinuances from the Secondary System: Halifax, Louisa, Madison and Scott Counties
4. Action on Additions, Abandonments or Other Changes in the Secondary System from May 1, 1989 through May 31, 1989
5. Action on Abandonment, Discontinuance and Transfer in the Primary System due to Relocation and Construction - Carroll and Page Counties
6. Action on Transfer of a Section of Frontage Road F-011 from the Interstate System to the Secondary System - Smyth County
7. City Street Mileage
8. Action on Bids Received May 23, 1989
9. Consultant Agreement: Route 72 - Scott County
Proj. 0072-084-104, PE100
Supplemental Agreement
Wiley and Wilson
Engineering services
10. Through Truck Restriction: Route 712
Fairfax County

Routes 2561 and 2560
Chesterfield County
11. Removal of Through Truck Restriction: Routes 17 and 15
Fauquier and Prince William
Counties
12. 1982 Surface Transportation Assistance Act
13. Logo Program: Change in Distance Criteria for Camping Facilities
14. Location: Business Route 10 (South Church Street)
& Design: Town of Smithfield
Proj. 7010-300-101, PE101
Fr: S. End of Cypress Creek
To: Int. of Route 10

Location Route 610 - Greenville County
& Design: Proj. 0610-040-159,M502
Fr: 0.23 Mi. S. Route 617
To: 0,.02 Mi. S. Route 617

Location Route 646 - Prince George County
& Design: Proj. 0646-074-172,M501
Fed. Proj. RS-1537 ()
Fr: Int. Route 156 Bypass
To: Int. Route 641

Location City of Lexington
& Design: Proj. U000-117-102,C501
Intersection Improvement at Borden Road and
Nelson Street (Route 60)

Location Indian River Road - Cities of Norfolk and Chesapeake
& Design: Proj. U000-122-116,C501
U000-131-109,C501
Fr: 0.05 Mi. W. Int. Midland Street
To: 0.17 Mi. E. W.C.L. of Chesapeake

15. Conveyances: Route 17 - Essex County
Route 57 - Henry County
Route Alt. 58 - Russell County
Route 81 - Roanoke County
Route 83 - Dickenson County
Route 611 - King William County
Route 704 - Isle of Wight County
16. Industrial Access: Goochland County
Proj. 1200-037-159,M501
Oilville Business Park
17. Washington Bypass Study: Supplemental Agreement
18. Railroad Access: Fournier Furniture Corporation
Russell County
19. Railroad Access: Policy Revision
20. FY 1989-90 Annual Budget
21. Richmond-Petersburg Turnpike Budget, FY 1989-90
22. Powhite Parkway Extension Toll Road Budget, FY 1989-90
23. Dulles Toll Road - Operations and Maintenance Budget, FY 1989-90
24. New Business
25. Adjourn

MINUTES
OF
MEETING OF THE COMMONWEALTH TRANSPORTATION BOARD

Richmond, Virginia

June 15, 1989

The monthly meeting of the Commonwealth Transportation Board was held in the Central Office in Richmond, Virginia, on June 15, 1989 at 11:30 a.m. Mr. Oscar K. Mabry, Deputy Commissioner, presided. Mr. Ray D. Pethel, Chairman, was on medical leave.

Present: Messrs. Bacon, Bayer, Howlette, Humphreys, Kelly, Leafe, Malbon, Musselwhite, Quicke, Smalley and Waldman and Mrs. Kincheloe.

Absent: Messrs. Pethel and Davidson and Dr. Thomas.

On motion of Mr. Kelly, seconded by Mr. Musselwhite, permits issued and canceled from May 18, 1989 to June 14, 1989, inclusive, as shown by the records of the Department, were approved.

Moved by Mr. Kelly, seconded by Mr. Musselwhite, that

WHEREAS, by proper resolutions, the Boards of Supervisors of Halifax, Louisa, Madison and Scott Counties have requested that certain roads which no longer serve as a public necessity be discontinued as parts of the Secondary System of Highways;

NOW, THEREFORE, BE IT RESOLVED, that pursuant to Section 33.1-150 of the Code of Virginia of 1950, as amended, the following roads are discontinued as parts of the Secondary System of Highways, effective this date.

06/15/89

Halifax County - Route 734 - From Station 126+00
to Station 134+30. 0.17 Mi.

Louisa County - Route 669 - From Station 110+15
to Route 731; From Route 731 to 0.27 mile South Route
731; From Station 73+00 to Station 69+22; From
Station 62+36 to Station 55+00. 0.67 Mi.

Madison County - Route 600 - From Station 62+23
to Station 68+33. 0.12 Mi.

Scott County - Route 614 - From Station 16+10 to
0.03 Mile East Station 16+10. 0.03 Mi.

Scott County - Route 701 - From 0.09 Mile West
Station 102+75 to 0.14 Mile West Station 102+75; From
Station 11+83 To 0.12 Mile North Station 11+83; From
Route 58 to 0.18 Mile South Route 58. 0.35 Mi.

Scott County - Route 708 - From Station 157+25
to 0.04 Mile West Station 157+25. 0.04 Mi.

Motion carried.

Moved by Mr. Kelly, seconded by Mr. Musselwhite,
that the Board approve additions, abandonments and
other changes in the Secondary System from
May 1, 1989 to May 31, 1989, inclusive, as shown by
the records of the Department. Motion carried.

Moved by Mr. Kelly, seconded by Mr. Musselwhite,
that

WHEREAS, Route 58 in Carroll County has been
altered and reconstructed as shown on plans for
Project: 0058-017-105,C-501 and C-502; and

WHEREAS, eight sections of the old road are no
longer necessary as a public road, the new road
serving the same citizens as the old, and one section
of the old road is to be transferred from the
Primary System to the Secondary System.

NOW, THEREFORE, BE IT RESOLVED, that pursuant to
Section 33.1-148 of the Code of Virginia of 1950, as
amended, 0.61 Mile of old Route 58 designated as
Sections 1, 3, 4, 6, 7, 8 and 9 on the plat dated
October 27, 1988, Project: 0058-017-105,C-501 and
C-502 be abandoned as part of the State Highway
System; and

06/15/89

BE IT FURTHER RESOLVED, that pursuant to Section 33.1-144 of the Code of Virginia of 1950, as amended, 0.10 mile of old Route 58, designated as Section 5 on the plat dated October 27, 1988, Project: 0058-017-105,C-501 and C-502, be discontinued as a part of the State Highway System; and

ALSO, BE IT FURTHER RESOLVED, that pursuant to Section 33.1-35 of the Code of Virginia of 1950, as amended, 0.52 mile of old Route 58, designated as Section 2 on the plat dated October 27, 1988, Project: 0058-017-105,C-501 and C-502, be transferred from the Primary System to the Secondary System of Highways.

Motion carried.

Moved by Mr. Kelly, seconded by Mr. Musselwhite, that

WHEREAS, Route 211 in Page County has been altered and reconstructed as shown on plans for Project: 1769-05; and

WHEREAS, one section of the old road is no longer necessary as a public road or for purposes of the State Highway System, as the new road serves the same citizens as the old;

NOW, THEREFORE, BE IT RESOLVED, that pursuant to Section 33.1-148 of the Code of Virginia of 1950, as amended, 0.22 mile of Route 211, designated as Section 4 on the plat dated February 26, 1958, Project: 1769-05 be abandoned as part of the State Highway System.

Motion carried.

Moved by Mr. Kelly, seconded by Mr. Musselwhite, that

06/15/89

WHEREAS, the Board of Supervisors of Smyth County on February 14, adopted a resolution requesting the Commonwealth Transportation Board to transfer a section of 0.62 mile of Frontage Road F-011 from Route 622 to Route 686 from the Interstate System to the Secondary System of Highways; and

WHEREAS, based on evaluation of this request the Department's staff has determined that this section of road could best be administered as a part of the Secondary System of Highways;

NOW, THEREFORE, BE IT RESOLVED, that the Commonwealth Transportation Board, in accordance with the authority entrusted under Section 33.1-53 of the Code of Virginia of 1950, as amended, does hereby declare that a section of 0.62 mile of Frontage Road F-011 from Route 622 to Route 686 shown on attached sketch, be transferred from the Interstate System to the Secondary System of Highways.

Motion carried.

Moved by Mr. Kelly, seconded by Mr. Musselwhite, that

WHEREAS, the Commonwealth Transportation Board is authorized under Section 33.1-41.1 of the Code of Virginia, as amended, to approve payments to cities and certain towns for street maintenance purposes; and

WHEREAS, certain Principal-Minor Arterial Roads and/or Collector-Local Streets within the corporate limits of the Town of Front Royal are eligible for such payment; and

WHEREAS, under the authority of Section 33.1-41.1, request is made by the Town of Front Royal, for maintenance payments on streets and roads meeting the required criteria;

06/15/89

NOW, THEREFORE, BE IT RESOLVED, that quarterly payments to the Town of Front Royal for streets and roads be increased by 1.62 centerline miles. This increase is a result of additions of Local Streets as described on tabulation sheet number 1 for the Town of Front Royal dated May 10, 1989. The tabulation sheet is on file in the Department's Urban Division.

The street net additions totaling 1.62 centerline miles increases the total mileage to 42.50 centerline miles of approved streets subject to maintenance payments.

Motion carried.

Moved by Mr. Kelly, seconded by Mr. Musselwhite, that

WHEREAS, the Commonwealth Transportation Board is authorized under Section 33.1-41.1 of the Code of Virginia, as amended, to approve payments to cities and certain towns for street maintenance purposes; and

WHEREAS, certain Principal-Minor Arterial Roads and/or Collector-Local Streets within the corporate limits of the Town of Christiansburg are eligible for such payment; and

WHEREAS, under the authority of Section 33.1-41.1, request is made by the Town of Christiansburg for maintenance payments on streets and roads meeting the required criteria;

NOW, THEREFORE, BE IT RESOLVED, that quarterly payments to the Town of Christiansburg for streets and roads be increased by 0.81 centerline mile. This increase is a result of additions of Local Streets as described on tabulation sheet number 1 for the Town of Christiansburg dated May 4, 1989. The tabulation sheet is on file in the Department's Urban Division.

The local street addition totaling 0.81 centerline mile increases the total local mileage to 67.97 centerline miles of approved streets subject to maintenance payments.

Motion carried.

06/15/89

Moved by Mr. Kelly, seconded by Mr. Musselwhite,
that

WHEREAS, the Commonwealth Transportation Board is authorized under Section 33.1-41.1 of the Code of Virginia, as amended, to approve payments to cities and certain towns for street maintenance purposes; and

WHEREAS, certain Principal-Minor Arterial Roads and/or Collector-Local Streets within the corporate limits of the City of Harrisonburg are eligible for such payment; and

WHEREAS, under the authority of Section 33.1-41.1, request is made by the City of Harrisonburg for maintenance payments on streets and roads meeting the required criteria;

NOW, THEREFORE, BE IT RESOLVED, that quarterly payments to the City of Harrisonburg for streets and roads be increased by 3.43 centerline miles. This increase is a result of additions and/or deletions of Local Streets as described on tabulation sheets numbered 1 and 2 for the City of Harrisonburg dated April 20, 1989. The tabulation sheets are on file in the Department's Urban Division.

The street net additions totaling 3.43 centerline miles increase the total mileage to 66.19 centerline miles of approved streets subject to maintenance payments.

Motion carried.

Moved by Mr. Kelly, seconded by Mr. Musselwhite,
that

WHEREAS, the Commonwealth Transportation Board is authorized under Section 33.1-41.1 of the Code of Virginia, as amended, to approve payments to cities and certain towns for street maintenance purposes; and

WHEREAS, certain Principal-Minor Arterial Roads and/or Collector-Local Streets within the corporate limits of the Town of Woodstock are eligible for such payment; and

06/15/89

WHEREAS, under the authority of Section 33.1-41.1, request is made by the Town of Woodstock for maintenance payments on streets and roads meeting the required criteria;

NOW, THEREFORE, BE IT RESOLVED, that quarterly payments to the Town of Woodstock for streets be increased by 0.49 centerline mile. This increase is a result of additions of Local Streets as described on tabulation sheet number 1 for the Town of Woodstock dated May 16, 1989. The tabulation sheet is on file in the Department's Urban Division.

The street net additions totaling 0.49 centerline miles increased the total mileage to 16.31 centerline miles of approved streets subject to maintenance payments.

Motion carried.

Moved by Mr. Kelly, seconded by Mr. Musselwhite, that

WHEREAS, the Commonwealth Transportation Board is authorized under Section 33.1-41.1 of the Code of Virginia, as amended, to approve payments to cities and certain towns for street maintenance purposes; and

WHEREAS, certain Principal-Minor Arterial Roads and/or Collector-Local Streets within the corporate limits of the City of Alexandria are eligible for such payment; and

WHEREAS, under the authority of Section 33.1-41.1, request is made by the City of Alexandria, for maintenance payments on streets/roads meeting the required criteria;

NOW, THEREFORE, BE IT RESOLVED, that quarterly payments to the City of Alexandria for streets/roads be decreased by 0.77 centerline mile. This decrease is a result of additions and deletions of local streets and roads as described on tabulation sheets numbered 1 and 2 for the City of Alexandria dated May 1, 1989. The tabulation sheets are on file in the Department's Urban Division.

06/15/89

The street/road net deletion totaling 0.77 centerline mile decreases the total mileage to 206.25 centerline miles of approved streets subject to maintenance payments.

Motion carried.

Moved by Mr. Kelly, seconded by Mr. Musselwhite, that

WHEREAS, the Commonwealth Transportation Board is authorized under Section 33.1-41.1 of the Code of Virginia, as amended, to approve payments to cities and certain towns for street maintenance purposes; and

WHEREAS, certain Principal-Minor Arterial Roads and/or Collector-Local Streets within the corporate limits of the City of Radford are eligible for such payment; and

WHEREAS, under the authority of Section 33.1-41.1, request is made by the City of Radford, for maintenance payments on streets meeting the required criteria;

NOW, THEREFORE, BE IT RESOLVED, that quarterly payments to the City of Radford for streets be increased by 0.19 centerline mile. This increase is a result of additions of local streets and roads as described on tabulation sheet number 1 for the City of Radford dated April 17, 1989. This tabulation sheet is on file in the Department's Urban Division.

The street totaling 0.19 centerline mile increases the total mileage to 46.86 centerline miles of approved streets subject to maintenance payments.

Motion carried.

Moved by Mr. Kelly, seconded by Mr. Musselwhite, that

06/15/89

WHEREAS, the Commonwealth Transportation Board is authorized under Section 33.1-41.1 of the Code of Virginia, as amended, to approve payments to cities and certain towns for street maintenance purposes; and

WHEREAS, certain Principal-Minor Arterial Roads and/or Collector-Local Streets within the corporate limits of the City of Lynchburg are eligible for such payment; and

WHEREAS, under the authority of Section 33.1-41.1, request is made by the City of Lynchburg, for maintenance payments on streets/roads meeting the required criteria;

NOW, THEREFORE, BE IT RESOLVED, that quarterly payments to the City of Lynchburg for streets/roads be increased by 4.36 centerline miles. This increase is a result of additions and deletions of local streets and roads as described on tabulation sheets numbered 1 through 8 for the City of Lynchburg dated April 7, 1989. The tabulation sheets are on file in the Department's Urban Division.

The street/road net addition totaling 4.36 centerline miles increases the total mileage to 342.90 centerline miles of approved streets subject to maintenance payments.

Motion carried.

Moved by Mr. Kelly, seconded by Mr. Musselwhite, that

WHEREAS, the Commonwealth Transportation Board is authorized under Section 33.1-41.1 of the Code of Virginia, as amended, to approve payments to cities and certain towns for street maintenance purposes; and

WHEREAS, certain Principal-Minor Arterial Roads and/or Collector-Local Streets within the corporate limits of the City of Waynesboro are eligible for such payment; and

06/15/89

WHEREAS, under the authority of Section 33.1-41.1, request is made by the City of Waynesboro, for maintenance payments on streets and roads meeting the required criteria;

NOW, THEREFORE, BE IT RESOLVED, that quarterly payments to the City of Waynesboro for streets be decreased by 0.25 centerline miles. This decrease is a result of deletions of Local Streets as described on tabulation sheet number 1 for the City of Waynesboro dated May 15, 1989. The tabulation sheet is on file in the Department's Urban Division.

This street net deletion totaling 0.25 centerline mile decreases the total mileage to 65.91 centerline miles of approved streets subject to maintenance payments.

Motion carried.

Moved by Mr. Kelly, seconded by Mr. Musselwhite, that

WHEREAS, the Commonwealth Transportation Board is authorized under Section 33.1-41.1 of the Code of Virginia, as amended, to approve payments to cities and certain towns for street maintenance purposes; and

WHEREAS, certain Principal-Minor Arterial Roads and/or Collector-Local Streets within the corporate limits of the Town of Leesburg are eligible for such payment; and

WHEREAS, under the authority of Section 33.1-41.1, request is made by the Town of Leesburg, for maintenance payments on streets and roads meeting the required criteria;

NOW, THEREFORE, BE IT RESOLVED, that quarterly payments to the Town of Leesburg for streets and roads be increased by 1.57 centerline miles. This increase is a result of additions of Local Streets and lane mileage of principal arterial roads as described on tabulation sheet number 1 for the Town of Leesburg dated May 12, 1989. The tabulation sheet is on file in the Department's Urban Division.

06/15/89

The street net addition totaling 1.57 centerline miles increases the total mileage to 47.81 centerline miles of approved streets subject to maintenance payments.

Motion carried.

Moved by Mr. Kelly, seconded by Mr. Musselwhite, that

WHEREAS, the Commonwealth Transportation Board is authorized under Section 33.1-41.1 of the Code of Virginia, as amended, to approve payments to cities and certain towns for street maintenance purposes; and

WHEREAS, certain Principal-Minor Arterial Roads and/or Collector-Local Streets within the corporate limits of the City of Williamsburg are eligible for such payment; and

WHEREAS, under the authority of Section 33.1-41.1, request is made by the City of Williamsburg, for maintenance payments on streets and roads meeting the required criteria;

NOW, THEREFORE, BE IT RESOLVED, that quarterly payments to the City of Williamsburg for streets be increased by 0.58 centerline mile. This increase is a result of additions of Local Streets as described on tabulation sheet number 1 for the City of Williamsburg dated April 17, 1989. The tabulation sheet is on file in the Department's Urban Division.

The street net addition totaling 0.58 centerline mile increased the total mileage to 50.20 centerline miles of approved streets subject to maintenance payments.

Motion carried.

Moved by Mr. Kelly, seconded by Mr. Musselwhite, that

06/15/89

WHEREAS, the Commonwealth Transportation Board is authorized under Section 33.1-41.1 of the Code of Virginia, as amended, to approve payments to cities and certain towns for street maintenance purposes; and

WHEREAS, certain Principal-Minor Arterial Roads and/or Collector-Local Streets within the corporate limits of the City of Chesapeake are eligible for such payment;

WHEREAS, under the authority of Section 33.1-41.1, request is made by the City of Chesapeake, for maintenance payments on streets and roads meeting the required criteria;

NOW, THEREFORE, BE IT RESOLVED, that quarterly payments to the City of Chesapeake for streets and roads be increased by 5.01 centerline miles. This increase is a result of additions of Minor Arterial and Local Streets as described on tabulation sheet number 1 for the City of Chesapeake dated May 24, 1989. The tabulation sheet is on file in the Department's Urban Division.

The street net additions totaling 5.01 centerline miles increase the total mileage to 534.54 centerline miles of approved streets subject to maintenance payments.

Motion carried.

Moved by Mr. Kelly, seconded by Mr. Musselwhite, that

WHEREAS, the Commonwealth Transportation Board is authorized under Section 33.1-41.1 of the Code of Virginia, as amended, to approve payments to cities and certain towns for street maintenance purposes; and

WHEREAS, certain Principal-Minor Arterial Roads and/or Collector-Local Streets within the corporate limits of the City of Chesapeake are eligible for such payment; and

06/15/89

WHEREAS, under the authority of Section 33.1-41.1, request is made by the City of Chesapeake, for maintenance payments on streets and roads meeting the required criteria;

NOW, THEREFORE, BE IT RESOLVED, that quarterly payments to the City of Chesapeake for streets and roads be increased by 12.61 centerline miles. this increase is a result of additions of Collector-Local Streets as described on tabulation sheets numbered 1 through 9 for the City of Chesapeake dated April 17, 1989. These tabulation sheets are on file in the Department's Urban Division.

These street net additions totaling 12.61 centerline miles increases the total Collector-Local mileage to 621.31 centerline miles of approved streets subject to maintenance payments.

Motion carried.

Following an explanation by Mr. J. S. Hodge, Chief Engineer, of a bid protest filed on Project 0000-131-111,B-606, Centerville Turnpike, City of Chesapeake, motion was made by Mr. Musselwhite, seconded by Mr. Malbon, that the Board rescind its May 18, 1989 award of a contract for this project.

Motion carried.

The bids received May 23, 1989, were approved as noted on the attached sheets numbered 13a through 13v.

Moved by Mr. Bacon, seconded by Mr. Malbon, that

WHEREAS, the Department currently has a Memorandum of Agreement with the firm of Wiley and Wilson, and it has been determined that a change in the scope of services is necessary due to additional survey, right of way and construction design effort required to complete the final plans for this project:

0072-084-104,FE-100

RECEIVED MAY 23, 1989

JOB. DES.	PROJECT NUMBER	RTE. NO.	LOCATION & WORK TYPE	RECOMMEND	CONTRACTOR	NO. OF BIDS	BID
INVESTMENT PROJECTS							
1	1200 D-30-89	64 EBL & NBL	From: Hatten Cl To: Prince William Cl Fauquier County Drainage Restoration: Spot Work	AWARD	RAPPAPORT, INC. FRONT ROYAL, VA	4	\$87,737.50
2	1214 RFP-1-89	1-77 NBL & SBL	Weigh Sta. Rte. 1-77-1.2 Mi. N. Rte. 717 Gland County Replace Approach Slab	AWARD	FT. CHISWELL CONSTR. CORP. MAX MEMPHIS, VA	4	\$83,494.00
3	1079 BR-5L-88	64	Hampton Rds. Br. Tunnels, I-64 Hampton, VA Hampton Rds. Toll Rd. Elec. Equip. Replace/Bispeval & Roby, Lighting Mod. Hampton Rds. Br. Tunnel	AWARD	GEORGIA ELECTRIC CORP. ALBANY, GA	5	\$895,000.00

123

BIDS RECEIVED MAY 23, 1989

JOB. DES.	PROJECT NUMBER	RTIE. MI.	LOCATION & WORK TYPE	REQUIREMENT	CONTRACTOR	NO. OF BIDS	BID
4	1185	4-S-9	95 IRL From: 0.37 Mi. N. Rte. 646 Overpass To: 0.4 Mi. S. Rte. 738 Overpass Hanover County Asphaltic Pave, Planing & Plant Mix Overlay	AWARD	POMALCO CORP. RICHMOND, VA	4	\$43,572.84
5	1190	BR-43-89	395 Rte. 395 over Rte. 27 Arlington County Superstructure Repara.	AWARD	CENTURY CONCRETE SERVICES, INC. VIRGINIA BEACH, VA	3	\$128,902.00
6	1193	BR-4-89	64, 85 F 95 Various Locations Richmond District Br. Repara. Later Conc. Overlays (3) & Asphalt Conc. Overlays (2)	AWARD	CRAWFORD CONSTM. CO., A DIV. OF J. G. CRAWFORD ENTPR. LTO PAUNCHI, NY	7	\$495,201.00
7	1204	BR-78-89	66 Deci Repr. & Epoxy Conc. Overlay ML Rte. 66 over Rejoic-Broad Run Fauquier County	AWARD	WILKINS CONSTR. CO., INC. ANNERSST, VA	11	\$91,815.00

RECEIVED MAY 23, 1989

JOB. DES.	PROJECT NUMBER	RYE. NO.	LOCATION	REQUIREMENT	CONTRACTOR	NO. OF BIDS	BID
			ROAD TYPE				
8	1219	PR-7-89	Various Locations Albemarle County Conc. Paving Repr.	AWARD	W.P. BUBLEIGH, INC. CONCORD, VA	7	\$387,510.00
9	1223	P-24-89	Various Locations: Monteourt County Preparation Painting of Exist. Strs.	AWARD	DUFANOS CONTRACTORS, INC. BALTIMORE, MD	7	\$214,000.00
10	1225	0081-081-2017,5401 0081-081-2018,5703	Site. 81 JBL & SBL Over Buffalo Cr. Rockbridge County Dr. Superstr. Repara. & Latex Conc. Overlay (2)	AWARD	LANFORD BROTHERS CO., INC. ROANOKE, VA	5	\$578,906.55

UNRECEIVED MAY 23, 1959

JOB. DES.	PROJECT NUMBER	HTS. NO.	LOCATION	RECOMMEND	CONTRACTOR	NO. OF BIDS	BID
			WORK TYPE				
11 1226	DR-54-49	64	Various Locations City of Norfolk Dr. Repr. & Epoxy Conc. Overlay	AWARD	GEORGE CONTRACTING CO., INC. VIRGINIA BEACH, VA	3	\$182,856.00
12 1227	DR-50-49	64	Various Locations York & City of Newport News Dr. Repr. & Epoxy Conc. Overlay	AWARD	GEORGE CONTRACTING CO., INC. VIRGINIA BEACH, VA	3	4204,488.00
Bids Received June 6, 1959							
13 171-49A	7095-564-147-9031	1 - 7	Various Locations Cities of Richmond & Petersburg Removal of Toll Plans Interstate Rte. 95 Moved by Mr. Smalley, seconded by Mr. Bacon, that the Board approve the bids listed above for award for the INTERSTATE SYSTEM PROJECTS and authorize execution of contracts by the Deputy Commissioner or Chief Engineer. Motion carried.	AWARD	F. C. ENGLISH, INC. NEWPORT, VA.	3	\$920,057.50
PRIMARY PROJECTS							
1 110-89A	6220-011-104,8901	220	From: 0.60 Mi. S. Int. Rtes. 11 & 220 Alt. To: Int. Rtes. 11 & 220 (Near I-81) Baltimore County Traffic Signs	AWARD	ALZEI CONTRACTING, INC. PARIS, ST	3	\$164,450.00

RECEIVED MAY 23, 1989

JOB. DES.	PROJECT NUMBER	RTI. NO.	LOCATION & WORK TYPE	RECOMMEND	CONTRACTOR	NO. OF BIDS	BID
2	119-89A 0040-090-103,1501	40	<p>From: 2.5 Mi. N. Sussex Ct</p> <p>To: 3.8 Mi. N. Sussex Ct</p> <p>Sheriff County</p> <p>Asphalt Conc. Base Course & Asphalt Top</p>	AWARD	REY CONSTR. CO., INC. CLARKSVILLE, VA	5	\$286,568.60
3	124-89A 0011-154-103,1501	11	<p>From: 0.543 Mi. E. Main St.</p> <p>To: Int. Main St.</p> <p>Town of Christiansburg</p> <p>Asphalt Conc. Base Course, Entire Surf.</p> <p>Asphalt Top</p>	AWARD	PENDELTON CONSTR. CORP. WYTHEVILLE, VA	4	\$2,233,279.90
4	119B 0380-079-1945,462	360	<p>Rte. 360 over Appahannock Rv.</p> <p>Richmond District</p> <p>Deck Repr. Epoxy Overlay, Joint Sealant</p> <p>Replace. & Clean Pier Caps</p>	AWARD	DONALD H. SELVAGE, INC. AMHERST, VA	5	\$1,199,052.00
5	120A BR-78-89	17 & 28	<p>Rte. 17 over Southern Bay. & Rte. 28 over Cedar Run</p> <p>Fauquier County</p> <p>Superstr. Repr. & Epoxy Conc. Overlay</p>	AWARD	LAMFORD BROTHERS CO., INC. ROMULE, VA	4	\$195,847.50

RECEIVED MAY 23, 1989

JOB. DES.	PROJECT NUMBER	RTE. NO.	LOCATION & WORK TYPE	RECOMMEND	CONTRACTOR	NO. OF BIDS	BID
6	77-89A 0028-029-111, C504, B606, B607 0028-053-104, C503, B612, B613, B614, B615	28	From: 3.382 Mi. N. Rte. 50 To: 2.066 Mi. N. Rte. 267 Fairfax & Loudoun Co's. Asphalt Conc. Base Course, Signs, Signals, Lighting, (6) Bns., Drainage Str., Totl. Facility & Incids.	AWARD	MOORE BROTHERS CO., INC. VERONA, VA	8	\$14,247,089.23
7	109-89A 0275-007-101, B304, B303	275	From: 3.785 Mi. S. Rte. 11 To: 1.726 Mi. W. Rte. 11 Augusta County Grade, Drainage, Dem. of Sidgs, Utilities & Reloc. Conn. Rte. 742	AWARD	HAYNES BROTHERS, INC. CHATHAM, VA	11	\$2,399,157.85
8	111-89A 0123-029-522, B501	123	Extend Exist. SBL Left Turn Lane with 4' Raised Conc. Median at Int. Rte. 694 Fairfax County Asphalt Conc. Base Course & Asphalt Top	AWARD	GENERAL PAVING CORP. MANASSAS, VA	3	\$37,955.30
9	113-89A 0030-050-114, B501 0030-050-115, B501	28	From: King William High School (0.3 Mi. E. of Rte. 360) Central Garage AMB To: Hamilton Holmes Elementary School (6.4 Mi. E. of Rte. 360 Central Garage) King William County Construct Turn Lanes	AWARD	HOWALCO CORP. RICHMOND, VA	4	\$211,916.59

1301

RECEIVED MAY 23, 1989

JOB. RES.	PROJECT NUMBER	RTIE. NO.	LOCATION & WORK TYPE	RECOMMEND	CONTRACTOR	NO. OF BIDS	BID
10	114-89A 0007-053-519,MS01	7	Int. Rte. 437 Loudoun County Asphalt Conc. Base Course & Asphalt Top	AWARD	GENERAL PAVING CORP. MANASSAS, VA	2	\$39,739.50
11	114-89A 0501-081-104,MS04	501	Rte. 501 over Belle Cove Cr. - 3.50 MI. SOL Buena Vista Rochbridge County Br. Widening	AWARD	CHARLES B. BARBER & SON CONSTR. CO., INC. LEXINGTON, VA	5	\$290,428.00
12	118-89A 6050-007-102,CS00,B617	50	From: 2.481 MI. W. of EGL Capron To: 4.838 MI. W. of EGL Capron Southampton County Aggr. Base Course	AWARD	J. H. LEE & SONS, INC. COURTLAND, VA	5	\$3,053,108.51
13	120-89A 0128-091-101,CS01	120	From: Int. Rte. 301 To: 0.01 MI. W. North Bound Tract CSX RR Sussex County Asphalt Conc. Base Course & Asphalt Top	AWARD	BISHOP & SETTLE CONSTR. CO., INC. ALBERTA, VA	4	\$494,584.94

RECEIVED MAY 23, 1989

JOB. DES.	PROJECT NUMBER	RT. NO.	LOCATION & WORK TYPE	RECOMMEND	CONTRACTOR	NO. OF BIDS	BID
14 122-89A	0011-126-102,CS01 0232-126-101,CS01	11 & 232	Rte. 11 - From: Tyler Ave. To: First St. At SW Va. Memorial Br. AND Ste. 232 - From: Normod St. at SW Va. Memorial Br. To: Madsonoth St. City of Radford Traffic Signals	AWARD	NEW RIVER ELECTRICAL CORP. ROANOKE, VA	2	\$574,114.00
15 128-89A	0028-030-1040,SR01	28	Rte. 28 over Licking Rer D.A. Hl. N. Rte. 649 Fauquier County Superstr. Replacement & Approaches	AWARD	COASTAL PILE DRIVING, INC. CHANTILLY, VA	6	\$304,200.00
16 538	11-1303-7085-802	1303	Adjacent to Rte. 11 over James Rv. Bedford County Replacement of 2 Span Pedestrian Suspension Br. over James Rv.	AWARD	FT. CHISWELL CONST. CORP. MAX HEADONS, VA	3	\$227,520.00

1-137-1

RECEIVED MAY 23, 1989

JOB DES.	PROJECT NUMBER	ROUTE NO.	LOCATION & WORK TYPE	RECOMMEND	CONTRACTOR	NO. OF BIDS	BID
17 1180	0011-095-307, MS01	11	From: 0.449 Mi. W. Int. Rte. 704 To: 0.061 Mi. E. Int. Rte. 704 Washington County Left Turn Lane	AWARD	D & D CONSTR. CO. CHILMARK, VA	3	\$44,317.80
18 1182	8058-070-117, MS01	58	From: ECL of Stuart To: Int. Rte. 777(N) Patrick County Asphalt Base & Top	AWARD	APAC-VA., INC. DANVILLE, VA	3	\$90,410.83
19 1183	35-8440-7129-005	460	From: 1.0 Mi. W. Rte. 41 To: 0.15 Mi. W. Rte. 643 Giles County Installation of Retaining Walls	AWARD	FT. CHESHELL CONSTR. CORP. MAX MEADOWS, VA	3	\$265,740.00
20 1184	BR-7A-89	15	Rte. 15 (NBL & SBL) over Rappahannock Rv. Culpeper County Deck & Joint Repr. & Polymer Cons. Overlay	AWARD	MILKINS CONSTR. CO., INC. AMHERST, VA	9	\$166,779.10

RECEIVED MAY 23, 1989

JOB. DES.	PROJECT NUMBER	RTE. NO.	LOCATION & WORK TYPE	RECOMMEND	CONTRACTOR	NO. OF BIDS	BID
21 1187	0058-070-112, NS01	5B	From: 1.56 MI. E. Rte. 610(E) To: 1.71 MI. E. Rte. 610(E) Patrick County Grading - Eliminate Reside, Obstacles at Lovers Leap	AWARD	R. D. CRUMBER & SONS, INC. BILLSVILLE, VA	7	\$51,395.00
22 1192	0150-020-107, S901 0295-042-102, S901	150 4 295	Rte. 150 at Rte. 486; Rte. 295 between Rte. 156 & 415 Chesterfield & Hanover Co's. Sign Installation	AWARD	APEX CONTRACTING, INC. PARIS, KY	4	\$63,907.00
23 1194	0011-060-1027, S802	11	Rte. 11 over S. Fork Roanoke Rv. - 1.6 MI. E. of Ellioton Montgomery County Br. Repr.	AWARD	FT. CHESSELL CONSTR. CORP. RAY HERMONS, VA	9	\$113,014.50
24 1196	0211-069-1019, S801	211	Rte. 211 MI. over S. Fork Shenandoah Rv. - 2.72 MI. W. MEL Lutzay Page County Br. Repr. & Latex Conc. Overlay	AWARD	B & H SERVICES CO., INC. PARIS, KY	6	\$468,409.75

RECEIVED MAY 23, 1989

JOB. DES.	PROJECT NUMBER	RT. NO.	LOCATION & WORK TYPE	RECOMMEND	CONTRACTOR	NO. OF BIDS	BID
25 1200	PR-47-89	58	From: Int. Rte. 58 & Bus. 58 - N.P. 22.22 To: E. End Rudds Cr. Br. - N.P. 26.03 Necklansberg County Conc. Pav. Repr.	AWARD	CENTRAL ATLANTIC CONTRACTORS, INC. ABERDEEN, MD	6	\$436,974.50
26 1202	BR-87-89	7	Various Locations Loudoun County Superstructure Repr. (3 Yrs.)	AWARD	D. W. MILLER, INC. HUNTINGDON, PA	4	\$322,802.00
27 1209	0049-065-701, N600 0049-067-701, N600	49	Rte. 49 over Mattoway Rv. & Little Mattoway Rv. Lunenburg & Mattoway Co's. Br. Superstr. Replacement	AWARD	D. W. LYLE CORP. ROCKNEY, VA	5	\$124,480.05
28 1210	0050-034-1008, S801 0050-034-1074, S801	50	Rte. 50 WBL over Back Cr. & Hopew Cr. Frederick County Br. Deck Reprs. & Latex Conc. Overlays	AWARD	EDMUNDO CONSTR. CO. A DIV. OF J. G. CRAMFORD ENTER. LTD. PAIDICAH, KY	9	\$139,395.45

RECEIVED MAY 23, 1989

JOB. DES.	PROJECT NUMBER	RT. NO.	LOCATION & WORK TYPE	RECOMMEND	CONTRACTOR	NO. OF BIDS	BID
29 1216	PR-5A-89	19	From: Maryland-Virginia Sl To: 0.16 Mi. W. Rte. 176 Accomack County Conc. Pave. Repr. (M&L & SBL)	AWARD	FORBY CONTRACTING, INC. HIGHLT, TN	7	\$2,254,316.80
30 1222	0029-897-7117,431	23	From: 0.227 Mi. E. ED Appalachia To: 0.6 Mi. E. ED Appalachia Wise County Slide Correction	AWARD	EMELSON CONSTR. CO, INC. ALBUQUISIA, NM	4	\$618,122.40
31 1195	BR-46-89	123	Rte. 123 N. & SBL over I-66 & Ramp A Fairfax County Dr. Deck, Joint Repra. & Epoxy Conc. Overlay	REJECT	LANFORD BROTHERS CO., INC. ROANOKE, VA	4	\$1,433,068.00

- 131 -

Moved by Mr. Musselwhite, seconded by Mr. Kelly, that the Board approve the bids listed above for award for the PRIMARY SYSTEM PROJECTS and authorize execution of contracts by the Deputy Commissioner or Chief Engineer, and approve rejection of bids listed above for rejection and authorize readvertisement. Motion carried.

RECEIVED MAY 23, 1949

JOB NO.	PROJECT NUMBER	ITS. NO.	LOCATION	RECOMMEND	CONTRACTOR	NO. OF BIDS
1	121-898 0000-125-106, C501	Var.	Jrd & Main Streets (5 Locations) Town of Pulaski Traffic Signal Modification	AWARD	NEW RIVER ELECTRICAL CORP. SOLSBORO, VA	2 \$223,367.40
2	123-898 0000-146-104, C501		From: Rte. 13 Bypass To: Kentucky Ave. City of Norton Asphalt Cans, Base Course, Bitum Surf. Asphalt Top, Drainage, Signals & Utilities	AWARD	R-S CONSTR. & PAVING, INC. CELLANOVA, VA	3 \$471,602.90
3	1175 0000-139-105, C501	Cove Rd.	From: 0.24 Mi. S. NCS Wytheville To: NCS Wytheville Town of Wytheville Asph. Base with Asphalt Top	AWARD	PT. DUNSHILL CONSTR. CORP. ALEXANDRIA, VA	4 \$193,636.33
4	125-898 0000-106-101, C501		From: Main St. - Rte. 43 To: 0.14 Mi. N. Main St. Town of Chase City Asphalt Cons. Base Course & Asphalt Top	AWARD	RET CONSTR. CO., INC. CHARLESTON, VA	2 \$217,003.90
5	109-898 0000-132-111, B501		Centerville Br. over Chesapeake & Albemarle Canal top Bridg Span Rehabilitation City of Chesapeake	AWARD	BLUENIDGE BRIDGES, INC. JONESVILLE, VA.	3 \$640,913.77

Bids Received June 13, 1949

Moved by Mr. Smalley, seconded by Mr. Musselwhite, that the Board approve the bids listed above for award for the URBAN SYSTEM PROJECTS and authorize execution of contracts by the Deputy Commissioner or Chief Engineer. Motion carried.

JOB. DES.	PROJECT NUMBER	ROUTE NO.	LOCATION & WORK TYPE	RECOMMEND	CONTRACTOR	NO. OF BIDS	BID
SECONDARY PROJECTS							
1	169-89A 1306-079-0201, JUNIP. 3	Var.	Various Locations Fairfax County Agr. Base Course, Asphalt Top, Drainage & Utilities	AWARD	CURHAM CONSTR., INC. JESSUP, MD	2	\$1,577,821.60
2	1178 0605-074-129, NS01	685	From: Rte. 692 To: I.O. Rd. S. Rte. 602 Cumberland County Grading, Drainage, Stabilize & Asphalt S.F.	AWARD	CRUMP CONSTR. CO., INC. FARMVILLE, VA	8	\$141,433.70
3	42-89A 0904-080-215, CS01 0419-080-107, CS01	904 & 419	From: 0.85 MI. S. SR. Rte. 419 To: 0.884 MI. S. Ste. Int. Rte. 633 AND From: 0.841 MI. W. Rte. 904 To: 0.894 MI. E. Rte. 904 Roanoke County Asphalt Conc. Base Course, Asphalt Top, Signals & Incide.	AWARD	ROHAM CONSTR., INC. RIDEWAY, VA	4	\$1,755,189.00 ALT. #10

RECEIVED MAY 23, 1987

JOB. DES.	PROJECT NUMBER	RTI. NO.	LOCATION & WORK TYPE	RECOMMEND	CONTRACTOR	NO. OF BIDS	BID
4	44-87A 0602-081-203,MS01,MS02,MS03 8670	642	From: Int. Exist. Rte. 602 To: 0.199 Mi. N. Exist. Rte. 602 Lexbridge County Aggr. Base Course, Asphalt S.T. & Br.	AWARD	CHARLES W. BARBER & SON CONSTR. CO., INC. LEXINGTON, VA	7	\$398,536.70
5	102-89A 0613-069-132,MS02	613	From: 0.161 Mi. N. Int. Rte. 249 To: Int. Rte. 249 New Kent County Asphalt Cons. Base Course & Asphalt Top	AWARD	WUHL DAK, INC. RICHMOND, VA	3	\$111,635.60
6	112-89A 0612-036-140,CS01	612	Box Culvert & Approaches to Poplar Spring Branch Gloucester County Aggr. Base Course & Asphalt S.T.	AWARD	CDS, INC. NEWPORT NEWS, VA	4	\$283,354.15
7	115-89A 0726-071-274,CS01	726	From: Int. Rte. 58 HBL To: 1.387 Mi. N. Int. Rte. 58 HBL Pittsylvania County Aggr. Base Course, Asphalt Top & Inlets.	AWARD	LARANDRE CONSTR. CO., INC. DANVILLE, VA	3	\$497,116.61

RECEIVED MAY 23, 1969

JOB. DES.	PROJECT NUMBER	RTS. NO.	LOCATION MARK TYPE	RECOMMEND	CONTRACTOR	NO. OF BIDS	BID
8	126-89A 0751-095-219,N501	751	From: 0.28 Mi. S. Rte. 819 To: 0.4 Mi. S. Rte. 819 Bathington County Aggr. Base Course, Asphalt S. I. & Drainage Str.	AWARD	D & D CONSTR. CO. CHILHOWIE, VA	7	\$76,088.20
9	1172 0473-034-P15,N501	473	From: Rte. 722 To: Rte. 463 Frederick County Var. Aggr. Base Course & Asphalt S. I.	AWARD	L. F. FRANKLIN & SONS, INC. STEPHENSON, VA	5	\$438,673.89
10	1173 034-1200, 01 5307	1200	From: 0.12 Mi. N. WCL Winchester To: 0.32 Mi. N. WCL Winchester Frederick County Var. Depth Aggr. Base Course & Asphalt Top	AWARD	L. F. FRANKLIN & SONS, INC. STEPHENSON, VA	4	\$139,672.00
11	1176 0417-013-388,N501	417	1.57 Mi. S. Rte. 460 Buchanan County Provide & Install Pipe	AWARD	FRILEY'S, INC. EAST STONE GAP, VA	4	\$27,960.00

RECEIVED MAY 23, 1987

JOB. DES.	PROJECT NUMBER	RTE. NO.	LOCATION & WORK TYPE	RECOMMEND	CONTRACTOR	NO. OF BIDS	BID
12 1177	0730-070-152,1501	730	From: Rte. 211 To: Onipeper Cl Rappahannock County Var. Depth Aggr. Base Course & Asphalt S.T.	AWARD	ROCK & RAINES CONSTR. CO., INC. UNIONVILLE, VA	7	\$141,464.00
13 1179	0765-005-P03,1501	765	From: Rte. 488 To: Dead End Amherst County Grade, Drain, Stabilize & Asphalt S.T.	AWARD	D.S. WASH CONSTR. CO. 30. S. HENRICHSON LOM D. WASH APPOWITTON, VA	6	\$87,398.93
14 1186	60-0603-5001-003	603	1.25 Mi. N. Rte. 485 Montgomery County Replace Exist. Br. with Pipe	AWARD	STRICKLAND CONSTR., INC. FANCY GAP, VA	4	\$34,535.38
15 1188	0688-033-P22,1501		From: Rte. 116 To: Rte. 489 Franklin County Var. Depth Aggr. Base Course & Asphalt S.T.	AWARD	STRICKLAND CONSTR., INC. FANCY GAP, VA	10	\$183,570.22

13q

JOB. DES.	PROJECT NUMBER	RTI. NO.	LOCATION ↓ WORK TYPE	REMARKS	CONTRACTOR	NO. OF BIDS	\$10
16 1189	0417-045-132,MS02	617	From: 1.0 MI. S. Int. Rte. 624 To: 0.46 MI. S. Int. Rte. 624 Highland County Var. Depth Aggr. Base Course & Asphalt 5.1.	AWARD	ROBERTSON-FOMLER CO., INC. RICHMOND, VA	4	9359,219.00
17 1191	0425-007-312,MS01	635	From: Int. Rte. 340 To: Int. Rte. 639 & Int. Rte. 634 Augusta County Asphalt Conc. Base Course & Asphalt Top	AWARD	ECHOLS BROTHERS, INC. A SUB. OF KOPPERS CO., INC. STAUNTON, VA	5	6494,479.00
18 1281	0414-011-6379,SR01 0423-011-6380,SR01	614 & 623	Various Locations Botetourt County Br. Rears. Restressed Beams	AWARD	FT. CHISWELL CONSTR. CORP. MAX HEADONS, VA	7	928,980.00
19 1203	0444-092-7112,431	614	From: Int. Rte. 16 To: 0.609 MI. E. Rte. 16 Waynesville County Slide Correction	AWARD	ERWIN O'DELL & CO. PULASKI, VA	6	9508,414.00

RECEIVED MAY 23, 1969

JOB. DES.	PROJECT NUMBER	RTE. NO.	LOCATION & MARK TYPE	RECOMMEND	CONTRACTOR	NO. OF BIDS	BID
20 1212	0441-095-P57, N501	441	From: 1.0 MI. E. Rte. 769 To: 1.5 MI. E. Rte. 769 Giles County Aggr. Base Course & Asphalt S.T.	AWARD	STRICKLAND CONSTR., INC. FARMY GAP, VA	7	\$82,385.92
21 117-89A	0422-083-P21, N502	622	From: Rte. 624 to: 0.5 MI. W. Rte. 624 Russell County Aggr. Base Course & Asphalt Top	REJECT	WAYHEAD, INC. MOUNTAIN CITY, TN	2	\$133,543.00

1-13-69

Moved by Mr. Musselwhite, seconded by Mr. Malbon, that the Board approve the bids listed above for award for the SECONDARY SYSTEM PROJECTS, and authorize execution of contracts by the Deputy Commissioner or Chief Engineer, an approve-rejection of bids listed above for rejection and authorize readvertisement. Motion carried.

MISCELLANEOUS PROJECTS

1 1220	PR-4-89	1-95 MIL & SBL	From: Richmond-Petersburg Toll Rd. To: 0.44 MI. W. Rte. 54 Hanover & Henrico Co's. CONC. Pave. Reprs.	AWARD	MARTIN CONTRACTING CO., INC. ASHLAND, VA	5	\$1,114,185.00
--------	---------	-------------------------	--	-------	---	---	----------------

RECEIVED MAY 23, 1989

JOB. DES.	PROJECT NUMBER	QTY.	LOCATION	RECOMMEN	CONTRACTOR	NO. OF BIDS	BID
NO.		NO.	MARK TYPE				
2	1174	Var.	Various Locations Bland County Asphalt S.F.	AWARD	D & D CONSTR. CO. CHARLOTTE, VA	5	\$124,776.00
3	1181	16	Various Location - Rte. 16 N.P. 19.53 to N.P. 23.74 Swth County Furnish & Erect 1725 L.F. Guardrail	AWARD	EDWARD RAYL OF ROANOKE, INC. ROANOKE, VA	4	\$26,358.00
4	1197	Var.	Various Locations Goochland & Hanover Co's. Guardrail Replacement	AWARD	RAMBO, INC. CHARLOTTEVILLE, VA	4	\$30,774.15
5	1199	Var.	Various Locations Salen District Instal.] Recessed Pav. Markers	AWARD	SWANSTON EQUIPMENT CO. FARGO, ND	4	\$197,194.00

JOB. DES.	PROJECT NUMBER	ROUTE. NO.	LOCATION	REQUIREMENT	CONTRACTOR	NO. OF BIDS	BID
			WORK TYPE				
6	1205	6H-7-89	Various Locations Culpeper District General Maintenance	AWARD	EMCO, INC. CHARLOTTEVILLE, VA	4	\$157,744.00
7	1207	2-R-89	Various Locations Bedford County Furnish, Deliver & Apply Asphalt Conc. Mat'l.	AWARD	ADAMS CONSTR. CO. REANOCK, VA	3	\$236,139.59
8	1213	4-G-9	Various Locations Fredericksburg District Furnish, Deliver & Apply Asphalt Conc. Mat'l.	AWARD	LAMOR CORP. RICHMOND, VA	3	\$1,346,786.51
9	1215	3-F-9	Various Locations Charlotte & Halifax Co's. Furnish Deliver & Apply Asphalt Conc. Mat'l.	AWARD	APAC-VA, INC. CHARLOTTEVILLE, VA	2	\$1,683,631.57

JOB. DES.	PROJECT NUMBER	ATE. NO.	LOCATION & WORK TYPE	RECOMMEND	CONTRACTOR	NO. OF BIDS	BID
10 1217	61-6A-89	Var.	Various Locations Fredericksburg District Boardrail Maintenance	AWARD	L. S. LEE, INC. TORK, PA	3	\$95,900.00
11 1218	SCB-3-89	Var.	Various Locations Various Locations Curb & Gutter, Entrance & Drop Inlet Repr.	AWARD	CURRENTS CONSTR., INC. RODFOLK, VA	4	\$92,766.50
12 1221	PR-9-89	95	Richmond-Petersburg Tapp. Richmond District Pave, Marker Installation	AWARD	LAKE ERIE CONSTR. CO. RODMARK, OH	5	\$34,580.00
13 1224	ER-8-89 6011-091-507, 8501 6840-948-541, 8901	Var.	Various Locations Staunton District Boardrail Schedule	AWARD	EDWARD BAIL, INC. T/A WEBSTER & WEBSTER CO. VERONA, VA	4	\$266,484.95

Moved by Mr. Humphreys, seconded by Mr. Bacon that the Board approve the bids listed above for award for the MISCELLANEOUS PROJECTS, and authorize execution of contracts by the Deputy Commissioner or Chief Engineer. Motion carried.

06-15-89

WHEREAS, after careful review of the additional services required, a firm proposal has been received and just compensation for these additional services has been established and are outlined in this Supplemental Agreement No. 1.

NOW, THEREFORE, BE IT RESOLVED, that the Board authorize the execution of this Supplemental Agreement and it shall become a part of the original agreement which currently has a maximum compensation of \$1,162,254.00.

This Supplemental Agreement No. 1 is in the amount of \$83,886.00 for services and expenses plus a net fee of \$5,467.00 making the total for this supplement \$89,353.00. The total maximum compensation of the agreement including this and all prior supplements is now \$1,251,607.00.

Motion carried.

Moved by Mr. Humphreys, seconded by Mr. Bacon, that

WHEREAS, in response to a formal request by the Fairfax County Board of Supervisors that Route 712 (Columbia Road) between Route 620 (Braddock Road) and Route 236 (Little River Turnpike) be considered for restriction of through truck traffic pursuant to the provisions of Section 46.1-171.2 of the Code of Virginia, this matter has been carefully reviewed; and

WHEREAS, the Fairfax County Board of Supervisors has conducted a public hearing on this restriction; and

WHEREAS, the route in question traverses a predominantly residential neighborhood; and

WHEREAS, a restriction on the proposed route would not present any undue hardship; and

WHEREAS, proper notice was given by posting signs and publishing notices advising the public of the proposed restriction and requesting written comments; and

06/15/89

WHEREAS, careful consideration has been given to the recommendations received, the available alternate routes and the past practices of the Department;

NOW, THEREFORE, BE IT RESOLVED, that Route 712 (Columbia Road) between Route 620 (Braddock Road) and Route 236 (Little River Turnpike) be restricted to through truck traffic in accordance with Section 46.1-171.2 of the Code of Virginia.

Motion carried.

Moved by Mr. Humphreys, seconded by Mr. Musselwhite, that

WHEREAS, in response to a formal request by the Chesterfield County Board of Supervisors that Route 2561 (Farnham Drive) and Route 2560 (Edenberry Drive) between Route 60 (Midlothian Turnpike) and Route 653 (Courthouse Road) be considered for restriction of through truck traffic pursuant to the provisions of Section 46.1-171.2 of the Code of Virginia, this matter has been carefully reviewed; and

WHEREAS, the Chesterfield County Board of Supervisors has conducted a public hearing on this restriction; and

WHEREAS, the routes in question traverse a predominantly non-commercial area; and

WHEREAS, a restriction of the proposed routes would not present any undue hardship; and

WHEREAS, proper notice was given by posting signs and publishing notices advising the public of the proposed restriction and requesting written comments; and

WHEREAS, careful consideration has been given to the recommendations received, the available alternate routes and the past practices of the Department;

06/15/89

NOW, THEREFORE, BE IT RESOLVED, that Route 2561 (Farnham Drive) and Route 2560 (Edenberry Drive) between Route 60 (Midlothian Turnpike) and Route 653 (Courthouse Road) be restricted to through truck traffic in accordance with Section 46.1-171.2 of the Code of Virginia.

Motion carried.

Moved by Mrs. Kincheloe, seconded by Mr. Smalley, that

WHEREAS, in accordance with provisions of Section 33.1-12(3) of the Code of Virginia, the Commonwealth Transportation Board may make rules and regulations, from time to time not in conflict with the laws of this state, for the protection of and concerning traffic on the use of systems of state highways and to add to, amend or repeal the same; and

WHEREAS, in accordance with provisions of Section 33.1-19 of the Code of Virginia, any such rule or regulation shall have the force and effect of law; and

WHEREAS, traffic and engineering studies undertaken by Department Engineers in 1984 and 1985 revealed a serious problem with tractor-trailer truck involvement in accidents between Interstate Route 66 near Marshall and the intersection of Routes 29 Business/211 in the Town of Warrenton; and

WHEREAS, due to a similar problem on Route 15 from Interstate Route 66 near Haymarket to the intersection of Route 29 that would arise because of steps taken in reference to Route 17, the State Highway and Transportation Commission (Commonwealth Transportation Board) on March 21, 1985, closed those sections of Route 17 and 15 referred to above to the operation of tractor truck trailers and tractor truck semitrailers as defined in Section 46.1-1 of the code of Virginia, until the reconstruction of Route 17 between Marshall and Warrenton as a four-lane, divided roadway is completed; and

06/15/89

WHEREAS, the reconstruction of Route 17 as a four-lane, divided roadway between Marshall and Warrenton is nearing completion;

NOW, THEREFORE, BE IT RESOLVED, that based on the completion of Route 17 between Marshall and Warrenton as a four-lane, divided roadway and studies conducted by Department Engineers, the Commonwealth Transportation Board hereby removes the restriction for the operation of tractor truck trailers and tractor truck semitrailers as defined in Section 46.1-1 of the Code of Virginia on Route 17 between Interstate Route 66 near Marshall and the intersection of Routes 29 Business/211 in the Town of Warrenton and on Route 15 between Interstate Route 66 near Haymarket and the intersection of Route 29, effective upon the opening of Route 17 as a four-lane divided roadway.

Motion carried.

Moved by Mr. Humphreys, seconded by Mr. Bacon, that

WHEREAS, by resolution dated May 17, 1984, this Board (formerly Commission) designated a list of qualifying highways for the operation of larger trucks under the STAA of 1982; and

WHEREAS, this same resolution provided that from time to time as appropriate and with due notice, this Board may modify any of the stated provisions and may, as well, add or delete designated and qualifying highways.

NOW, THEREFORE, BE IT RESOLVED, that the following routes can safely accommodate the larger vehicles and are necessary to provide reasonable access as provided by law and are, therefore, designated as Access Highways in addition to the one-half mile of Access from the Qualifying Highways:

<u>County or City</u>	<u>Route</u>	<u>From</u>	<u>To</u>
City of Winchester	11	0.33 Mi. N. Weems Lane	York Ave.

06/15/89

<u>County or City</u>	<u>Route</u>	<u>From</u>	<u>To</u>
Shenandoah Co.	730	Route I-81 (Exit #68)	Route 11
Shenandoah Co. Town of New Market	11	Route 730 (Shenandoah Co.)	Route 211 N. Int. (Town of New Market)
Town of New Market Shenandoah Co.	211	Route 11 E. Int. (Town of New Market)	Route 1002 (Shenandoah Co.)

Motion carried.

Moved by Mr. Humphreys, seconded by Mr. Bacon,
that

WHEREAS, by resolution dated May 17, 1984, this Board (formerly Commission) designated a list of qualifying highways for the operation of larger trucks under the STAA of 1982; and

WHEREAS, this same resolution provided that from time to time as appropriate and with due notice, this Board may modify any of the stated provisions and may, as well, add or delete designated and qualifying highways.

NOW, THEREFORE, BE IT RESOLVED, that the following route is designated as a Qualifying Highway for operation of larger trucks under the STAA:

<u>County or City</u>	<u>Route</u>	<u>From</u>	<u>To</u>
Shenandoah Co. Page Co. Town of Luray	211	Route 1002 (Shenandoah Co.)	Wallace Road (Town of Luray)

Motion carried.

Moved by Mr. Humphreys, seconded by Mr. Bacon,
that

06/15/89

WHEREAS, by resolution dated May 17, 1984, this Board (formerly Commission) designated a list of qualifying highways for the operation of larger trucks under the STAA of 1982; and

WHEREAS, this same resolution provided that from time to time as appropriate and with due notice, this Board may modify any of the stated provisions and may, as well, add or delete designated and qualifying highways.

NOW, THEREFORE, BE IT RESOLVED, that the following route can safely accommodate the larger vehicles and is necessary to provide reasonable access as provided by law and is, therefore, designated as an Access Highway in addition to the one-half mile of Access from the qualifying Highways:

<u>County or City</u>	<u>Route</u>	<u>From</u>	<u>To</u>
Page Co. Town of Luray	211 Bus.	Route 211 E. Int. (Page Co.)	1.85 Mi. W. of Route 211 (Marye Lane) (Town of Luray)

Motion carried.

Moved by Mr. Humphreys, seconded by Mr. Bacon, that

WHEREAS, by resolution dated May 17, 1984, this Board (formerly Commission) designated a list of qualifying highways for the operation of larger trucks under the STAA of 1982; and

WHEREAS, this same resolution provided that from time to time as appropriate and with due notice, this Board may modify any of the stated provisions and may, as well, add or delete designated and qualifying highways.

NOW, THEREFORE, BE IT RESOLVED, that the following route is designated as a Qualifying Highway for operation of larger trucks under the STAA:

06/15/89

<u>County or City</u>	<u>Route</u>	<u>From</u>	<u>To</u>
Page Co. Town of Luray	211	Wallace Road (Town of Luray)	Route 211 Bus. E. (Page Co.)

Motion carried.

Moved by Mr. Humphreys, seconded by Mr. Bacon,
that

WHEREAS, by resolution dated May 17, 1984, this Board (formerly Commission) designated a list of qualifying highways for the operation of larger trucks under the STAA of 1982; and

WHEREAS, this same resolution provided that from time to time as appropriate and with due notice, this Board may modify any of the stated provisions and may, as well, add or delete designated and qualifying highways.

NOW, THEREFORE, BE IT RESOLVED, that the following route can safely accommodate the larger vehicles and is necessary to provide reasonable access as provided by law and is, therefore, designated as an Access Highway in addition to the one-half mile of Access from the Qualifying Highways:

<u>County or City</u>	<u>Route</u>	<u>From</u>	<u>To</u>
Wise County Town of Wise	23 Bus.	Route 23 N. Int. (Wise Co.)	Route 23 S. Int. (Town of Wise)

Motion carried.

Moved by Mr. Humphreys, seconded by Mr. Bacon,
that

WHEREAS, by resolution dated May 17, 1984, this Board (formerly Commission) designated a list of qualifying highways for the operation of larger trucks under the STAA of 1982; and

06/15/89

WHEREAS, this same resolution provided that from time to time as appropriate and with due notice, this Board may modify any of the stated provisions and may, as well, add or delete designated and qualifying highways.

NOW, THEREFORE, BE IT RESOLVED, that the following routes are designated as Qualifying Highways for operation of larger trucks under the STAA effective upon the opening of Route 17 as a four-lane divided roadway between Marshall and Warrenton:

<u>County or City</u>	<u>Route</u>	<u>From</u>	<u>To</u>
Fauquier Co. & Town of Warrenton	17	Route I-66 E. Int. {Fauquier Co.}	Route 29 Bus. N. Int. {Town of Warrenton}
Fauquier Co. & Town of Warrenton	29 Bus.	Route 17 N. Int.	Route 15 Bus. N. Int.
Fauquier Co. & Town of Warrenton	15 Bus.	Route 29 Bus. N. Int. {Town of Warrenton}	Route 15/29 N. Int. {Fauquier Co.}

Motion carried.

Moved by Mr. Humphreys, seconded by Mr. Bacon, that

WHEREAS, on September 21, 1972, the Commonwealth Transportation Board approved the minimum State criteria by which gas, food and lodging establishments may qualify for participation in specific information signing for travel services within Interstate rights-of-way; and

WHEREAS, on November 16, 1972, the Commonwealth Transportation Board approved the gore of the first exit ramp in the direction of travel on the Interstate route at the interchange as the point of measurement in determining the qualification of gas, food and lodging establishments; and

06/15/89

WHEREAS, on August 18, 1977, camping was added to the criteria whereby the maximum distance criteria for participation by campgrounds was established as not more than 10 miles from the gore of the first exit ramp in the direction of travel on the Interstate route at the interchange; and

WHEREAS, there are relatively few campgrounds within this established 10 mile distance criteria currently participating in this program; and

WHEREAS, experience has revealed a need to revise the distance criteria to allow camping facilities that are located within 15 miles from the gore of the first exit ramp in the direction of travel on the Interstate route at the interchange to participate;

NOW, THEREFORE, BE IT RESOLVED, that the minimum State criteria for camping establishments are revised to include the following:

<u>SERVICE</u>	<u>MINIMUM STATE CRITERIA</u>
CAMPING	<ol style="list-style-type: none">1. Shall be located not more than 15 miles from the gore of the first exist ramp at the interchange in the direction of travel on the Interstate route.2. Shall possess a valid permit from the State Board of Health in accordance with Section 35.1-18 of the Code of Virginia.3. Shall have space for not less than 10 vehicular overnight camping units for rent or hire.4. Shall provide off-street passenger vehicle parking space for each overnight camping unit space for rent or hire.

06/15/89

5. Shall be in continuous 24-hour operation, 7 days a week, but may be closed to the public for not more than 120 consecutive days between November 1 and the following April 1, during which time all business panels associated therewith shall be covered or removed.
6. Shall provide a public telephone.

Motion carried.

On motion of Mr. Kelly, seconded by Mr. Quicke, action on the location and major design features of Business Route 10 (South Church Street) from the south end of the Cypress Creek Bridge to the intersection of Route 10 in the Town of Smithfield, State Project 7010-300-101, PE-101, C-501, was deferred until the July meeting.

Moved by Mr. Bacon, seconded by Mr. Malbon, that

WHEREAS, in accordance with the statutes of the Commonwealth of Virginia and policies of the Commonwealth Transportation Board, a Combined Location and Design Public Hearing was held in the E. W. Wyatt Junior High School on March 15, 1989, at 7:00 p.m., for the purpose of considering the proposed location and design of Route 610 from 0.23 mile south of Route 617 to 0.02 mile south of Route 617 in Greensville County, State Project 0610-040-159, M-502; and

WHEREAS, proper notice was given in advance, and all those present were given a full opportunity to express their opinions and recommendations for or against the proposed project as presented, and their statements being duly recorded; and

WHEREAS, the economic, social, and environmental effects of the proposed project have been examined and given proper consideration, and this evidence, along with all other, has been carefully reviewed;

06/15/89

NOW, THEREFORE, BE IT RESOLVED, that the location and major design features of this project be approved in accordance with the plan as proposed and presented at the said Location and Design Public Hearing by the Department's Engineers.

Motion carried.

Moved by Mr. Humphreys, seconded by Mr. Bacon, that

WHEREAS, in accordance with the statutes of the Commonwealth of Virginia and policies of the Commonwealth Transportation Board a Location and Design Public Hearing was held in the Prince George County General District Courtroom on March 22, 1989, at 7:00 P.M., for the purpose of considering the proposed location and design of Route 646 from the intersection of Route 156 Bypass to the intersection of Route 641 in Prince George County, State Project 0646-074-172,M-501; and

WHEREAS, proper notice was given in advance, and all those present were given a full opportunity to express their opinions and recommendations for or against the proposed project as presented, and their statements being duly recorded; and

WHEREAS, the economic, social, and environmental effects of the proposed project have been examined and given proper consideration, and this evidence, along with all other, has been carefully reviewed;

NOW, THEREFORE, BE IT RESOLVED, that the location and major design features of this project be approved in accordance with the plan as proposed and presented at the said Location and Design Public Hearing by the Department's Engineers.

Motion carried.

Moved by Mr. Smalley, seconded by Mr. Malbon, that

06/15/89

WHEREAS, in accordance with the statutes of the Commonwealth of Virginia and policies of the Commonwealth Transportation Board, a Combined Location and Design Public Hearing was held in the Lexington Fire House Auditorium at 112 South Jefferson Street in Lexington, on February 7, 1989, for the purpose of considering the proposed location and design of the Borden Road/Nelson Street intersection in the City of Lexington, State Project U000-117-102,C-501; and

WHEREAS, proper notice was given in advance, and all those present were given a full opportunity to express their opinions and recommendations for or against the proposed project as presented, and their statements being duly recorded; and

WHEREAS, the economic, social, and environmental effects of the proposed project have been examined and given proper consideration, and this evidence, along with all other, has been carefully reviewed;

NOW, THEREFORE, BE IT RESOLVED, that the location and major design features of this project be approved in accordance with Alternative B as proposed and presented at the said Location and Design Public Hearing by the Department's Engineers with provisions for sidewalks on both sides of Nelson Street, the closing of existing Borden Road at Nelson Street, and the extension of curb and gutter and shift of alignment at the end of the Borden Road relocation to mitigate the concerns of property owners along the south side of the existing roadway.

Motion carried.

Moved by Mr. Leaf, seconded by Mr. Bacon, that

06/15/89

WHEREAS, in accordance with the statutes of the Commonwealth of Virginia and policies of the Commonwealth Transportation Board, a Location and Design Public Hearing was held at the Campostella Middle School, Norfolk, Virginia, on November 17, 1988, at 7:00 p.m., for the purpose of considering the proposed location and design of Indian River Road from 0.05 mile west of the intersection of Midland Street to 0.17 mile east of the west corporate limits of Chesapeake in the cities of Norfolk and Chesapeake, State Projects U000-122-116,C-501 and U000-131-109,C-501; and

WHEREAS, proper notice was given in advance, and all those present were given a full opportunity to express their opinions and recommendations for or against the proposed project as presented, and their statements being duly recorded; and

WHEREAS, the economic, social, and environmental effects of the proposed project have been examined and given proper consideration, and this evidence, along with all other, has been carefully reviewed;

NOW, THEREFORE, BE IT RESOLVED, that the location and major design features of this project be approved in accordance with the plan as proposed and presented at the said Location and Design Public Hearing by the Department's Engineers with provisions for the study to determine if a signal is warranted at Marsh Street if so, it be included and that a raised median be included between Marsh Street and Wilson Road.

Motion carried.

6/15/89

Moved by Mr. Humphreys, seconded by Mr. Musselwhite

that

WHEREAS, in connection with Route 57, State Highway Project 0057-044-101, RW-1, the Commonwealth acquired certain lands from Henry S. Eanes, et al, by deed dated January 2, 1959, recorded in Deed Book 152, Page 301 in the Office of the Clerk of the Circuit Court of Henry County; and

WHEREAS, a portion of the right of way, so acquired, is no longer needed; and

WHEREAS, the adjoining landowner has requested that the Commonwealth convey to him the excess right of way in order to more fully develop the adjacent land; and

WHEREAS, the Commonwealth Transportation Commissioner has certified in writing that the land containing 0.10 acre, more or less, and lying south of and adjacent to the south normal right of way limits of Route 57, from a point approximately 55 feet opposite approximate Station 322+00 (office revised centerline) to a point approximately 55 feet opposite approximate Station 324+10 (office revised centerline) does not constitute a section of the public road and is deemed by him no longer necessary for the uses of the State Highway System.

NOW, THEREFORE, the conveyance of the said land in accordance with the provisions of Section 33.1-149 of the Code of Virginia (1950), as amended, is approved and the Commonwealth Transportation Commissioner is hereby authorized to execute in the name of the Commonwealth a deed without warranty to the adjoining landowner for a consideration acceptable to the State Right of Way Engineer, subject to such restrictions as may be deemed requisite.

Motion carried.

Moved by Mr. Humphreys, seconded by Mr. Musselwhite

that

WHEREAS, in connection with Route 17, State Highway Project 6017-028-106, RW-202, the Commonwealth acquired certain lands from Guilford D. Ware, et al, by instrument dated October 21, 1983, case for which has been concluded, recorded in Deed Book 151, Page 825; and in connection with State Highway Project 0017-028-018, RW-1, the Commonwealth acquired certain lands from Heirs at Law of Catesby Ware, deceased, by instrument dated May 5, 1960, case for which has been concluded, recorded in Deed Book 94, Page 229; and from Emma A. Jefferies and John B. Jefferies by

6/15/89

deed dated February 16, 1960, recorded in Deed Book 94, Page 160. These instruments are recorded in the Office of the Clerk of the Circuit Court of Essex County; and

WHEREAS, a portion of the right of way, so acquired, is no longer needed; and

WHEREAS, in order to more fully develop the adjacent lands, the adjoining landowner has requested that the excess right of way be conveyed; and

WHEREAS, the Commonwealth Transportation Commissioner has certified in writing that the land containing 0.619 acre, more or less, and lying southwest of and adjacent to the southwest normal right of way limits of Route 17, from a point approximately 60 feet opposite approximate Station 1256+80 (SBL centerline Route 17) to a point approximately 60 feet opposite approximate Station 1258+29 (SBL centerline Route 17) does not constitute a section of the public road and is deemed by him no longer necessary for the uses of the State Highway System.

NOW, THEREFORE, in accordance with the provisions of Section 33.1-149 of the Code of Virginia (1950), as amended, the conveyance of the said land, so certified, is approved and the Commonwealth Transportation Commissioner is hereby authorized to execute a deed without warranty conveying same to the adjoining landowner of record for a consideration satisfactory to the State Right of Way Engineer, subject to such restrictions as may be deemed requisite, pending the abandonment of old Route 611.

Motion carried.

Moved by Mr. Humphreys, seconded by Mr. Musselwhite

that

WHEREAS, in connection with Route A-58, State Highway Project 4683-05, the Commonwealth acquired certain lands from Stanley G. Banner and Evelyn M. Banner by deed dated August 8, 1955, recorded in Deed Book 150, Page 359 in the Office of the Clerk of the Circuit Court of Russell County; and

WHEREAS, a portion of the right of way, so acquired, is no longer needed; and

WHEREAS, in order to more fully develop the adjacent lands, the adjoining landowner has requested that the excess right of way be conveyed; and

6/15/89

WHEREAS, the Commonwealth Transportation Commissioner has certified in writing that the land containing 870 square feet, more or less, and lying west of and adjacent to the west normal right of way limits of Route Alt. 58, Project 7058-083-102, RW-201, from a point approximately 112 feet opposite approximate Station 52+40 (Route Alt. 58 NBL centerline) to a point approximately 115 feet opposite approximate Station 53+92 (Route Alt. 58 NBL centerline) does not constitute a section of the public road and is deemed by him no longer necessary for the uses of the State Highway System.

NOW, THEREFORE, in accordance with the provisions of Section 33.1-149 of the Code of Virginia (1950), as amended, the conveyance of the said land, so certified, is approved and the Commonwealth Transportation Commissioner is hereby authorized to execute a deed conveying same to the adjoining landowner of record for a consideration satisfactory to the State Right of Way Engineer, subject to such restrictions as may be deemed requisite.

Motion carried.

Moved by Mr. Humphreys, seconded by Mr. Musselwhite

that

WHEREAS, in connection with Route 611, State Highway Project 0611-050-145, M-501, the Commonwealth acquired certain lands from Terra Alta, Inc. by deed dated April 28, 1987, recorded in Deed Book 169, Page 251; and from C. R. Bassett, et al, by Omnibus Deed dated October 14, 1964, recorded in Deed Book 90, Page 288. These deeds are recorded in the Office of the Clerk of the Circuit Court of King William County; and

WHEREAS, under Project 0611-050-145, M-501, a portion of Route 611 was relocated in a western direction serving the same citizens as before; and

WHEREAS, at a meeting of the Board of Supervisors of King William County held on November 22, 1988, a resolution was passed abandoning a portion of old Route 611, effective February 3, 1989; and

WHEREAS, in order to more fully develop the property, the owner of the adjacent land has requested that the excess right of way, so acquired, be conveyed to him; and

WHEREAS, the Commonwealth Transportation Commissioner has certified in writing that the right of way comprising approximately 0.277 acre, more or less, land and lying east of and adjacent to the east normal right of way limits of Route 611, from a point approximately 30 feet

6/15/89

opposite approximate Station 89+10 (Route 611 revised centerline) to a point approximately 30 feet opposite approximate Station 93+40 (Route 611 revised centerline) does not constitute a section of the public road and is deemed by him no longer necessary for the uses of the Secondary System of State Highways.

NOW, THEREFORE, the conveyance of the said parcel of land, so certified, in accordance with the provisions of Section 33.1-154 of the Code of Virginia (1950), as amended, is approved and the Commonwealth Transportation Commissioner is hereby authorized to execute in the name of the Commonwealth a deed, without warranty, conveying same to the adjoining landowner of record for a consideration satisfactory to the State Right of Way Engineer, subject to such restrictions as may be deemed requisite.

Motion carried.

Moved by Mr. Humphreys, seconded by Mr. Musselwhite

that

WHEREAS, in connection with Route 83, State Highway Project 67-AR1, the Commonwealth acquired certain lands, a portion of which lies outside the normal right of way, from Clinchfield Coal Corp. by deed dated August 18, 1955, recorded in Deed Book 109, Page 562 in the Office of the Clerk of the Circuit Court of Dickenson County; and

WHEREAS, under Project 0083-025-110, RW-201, Route 83 was relocated in a northern direction and the new location serves the same citizens as the old location and has been approved by the State Highway and Transportation Commissioner; and

WHEREAS, in order to reach an agreement with the adjoining landowner for additional land needed for the Fremont Area Headquarters, the adjoining landowner has requested that the Commonwealth convey to her the excess right of way, so acquired; and

WHEREAS, the Commonwealth Transportation Commissioner has certified in writing that the land containing 1.05 acres, more or less, and comprising the former 110 foot wide right of way of old Route 83, the centerline of which extends from the south existing right of way line of present Route 83, at a point approximately 140 feet opposite approximate Station 347+80 (office revised median centerline) to the existing railroad right of way line of Carolina Clinchfield and Ohio Railroad at a point approximately 360 feet opposite approximate Station 351+20 (office revised median centerline) does not constitute a section of the public road and is deemed by him no longer necessary for the uses of the State Highway System.

6/15/89

NOW, THEREFORE, in accordance with the provisions of Section 33.1-149 of the Code of Virginia (1950), as amended, the conveyance of the land, so certified, is hereby approved and the Commonwealth Transportation Commissioner is authorized to execute in the name of the Commonwealth a deed, without warranty, conveying same to the adjoining landowner of record for a consideration satisfactory to the State Right of Way Engineer, subject to such restrictions as may be deemed requisite, pending the abandonment of old Route 83.

Motion carried.

Moved by Mr. Humphreys, seconded by Mr. Musselwhite

that

WHEREAS, the Commonwealth is the apparent owner of Route 704 located in Isle of Wight County; and

WHEREAS, under Project 0704-046-202, M-501, Route 704 was relocated in a northern direction and the new location serves the same citizens as the old location and has been approved by the State Highway and Transportation Commissioner; and

WHEREAS, the adjoining landowner has requested that the Commonwealth convey to him the excess land, so acquired, comprising a portion of old Route 704; and

WHEREAS, the Commonwealth Transportation Commissioner has certified in writing that the land containing 304 square feet, more or less, comprising a portion of old Route 704, lying south of the south normal right of way limits of Route 704, from a point approximately 30 feet opposite approximate Station 79+90 (Route 704 centerline) to a point approximately 25 feet opposite approximate Station 80+70 (Route 704 centerline) does not constitute a section of the public road and is deemed by him no longer necessary for the uses of the Secondary System of State Highways.

NOW, THEREFORE, the conveyance of the said land, so certified, in accordance with the provisions of Section 33.1-154 of the Code of Virginia (1950), as amended, is approved and the Commonwealth Transportation Commissioner is hereby authorized to execute in the name of the Commonwealth a quitclaim deed conveying same to the adjoining landowner of record for a consideration satisfactory to the State Right of Way Engineer and subject to such restrictions as may be deemed requisite, pending the abandonment of old Route 704.

Motion carried.

6/15/89

Moved by Mr. Humphreys, seconded by Mr. Musselwhite

that

WHEREAS, in connection with Route 81, State Highway Project 0081-080-001, RM-201, the Commonwealth acquired certain lands from Mrs. W. C. Jenkins and John E. Jenkins by instrument dated August 31, 1960, case for which has been concluded, recorded in Deed Book 648, Page 432; and from Floyd Price Simmons and Geneva B. Simmons by deed dated September 3, 1960, recorded in Deed Book 654, Page 540. These instruments are recorded in the Office of the Clerk of the Circuit Court of Roanoke County; and

WHEREAS, a portion of the property, so acquired, lying on the southeast side of the northbound lane of Route 81 is excess to the Department's needs; and

WHEREAS, the adjoining landowners have requested that the excess right of way, so acquired, be conveyed to them in order to more fully develop the adjacent land; and

WHEREAS, the Commonwealth Transportation Commissioner has certified in writing that the land containing 0.20 acre, more or less, and lying southeast of the southeast normal right of way limits of Route 81, from a point approximately 115 feet opposite approximate Station 288+97 (NBL centerline Route 81) to a point approximately 103.5 feet opposite approximate Station 290+41 (NBL centerline Route 81) and also from the last said Station to a point approximately 93 feet opposite approximate Station 291+84 (NBL centerline Rte 81) does not constitute a section of the public road and is deemed by him no longer necessary for the uses of the State Highway System.

NOW, THEREFORE, in accordance with the provisions of Section 33.1-149 of the Code of Virginia (1950), as amended, the conveyance of the said land, so certified, is approved and the Commonwealth Transportation Commissioner is hereby authorized to execute in the name of the Commonwealth a deed without warranty conveying same for a consideration satisfactory to the State Right of Way Engineer, and subject to such restrictions as may be deemed requisite.

Motion carried.

06/15/89

Moved by Mr. Smalley, seconded by Mr. Quicke, that

WHEREAS, Section 33.1-221 of the Code of Virginia provides a fund to "...be expended by the Board for constructing, reconstructing, maintaining or improving access roads within counties, cities and towns to industrial sites on which manufacturing, processing or other establishments will be built under firm contract or are already constructed and to publicly owned airports...;" and

WHEREAS, the Goochland County Board of Supervisors has, by resolution, requested industrial access funds to serve the Oilville Business Park located off Route 617 in the vicinity of the Route 64/617 (Oilville) interchange, and said access is estimated to cost \$123,000; and

WHEREAS, it appears that this request falls within the intent of Section 33.1-221 and has complied with the provisions of the Commonwealth Transportation Board's policy on the use of industrial access funds.

NOW, THEREFORE, BE IT RESOLVED, that \$123,000 of the Industrial Access Fund be allocated to provide adequate access to the proposed Oilville Business Park located off Route 617 in Goochland County, Project 1200-037-159, M-501, contingent upon:

1. all necessary right of way and utility adjustments being provided at no cost to the Commonwealth;
2. the execution of an appropriate contractual agreement, with acceptable surety, between Goochland County and Virginia Department of Transportation (VDOT), to provide for:
 - a. the design, administration and construction of this project;
 - b. Goochland county bearing any ineligible project costs and all eligible project costs in excess of \$123,000;

06/15/89

- c. Goochland County bearing all project costs not justified by appropriate capital expenditures under policy of the Commonwealth Transportation Board. IF suitable industry has not expended or entered into firm contract to expend at least \$1,230,000 for qualified capital outlay on eligible site(s) within this park (i.e. lots 2-9 as shown on the recorded plat for the Oilville Business Park) by June 15, 1991, then an amount equal to 10% of eligible capital expenditures and/or the eligible capital outlay under firm contract on qualified site(s) will be credited toward the project's allocation.
 - d. VDOT determining eligible project costs and eligible capital expenditures in accordance with current policy and procedures.
3. the financing and improvement of Route 617 to appropriate standards, from its intersection with this proposed access project to its interchange with Route 64, being assured from Secondary Construction allocations for Goochland county or another available source.

Motion carried.

Moved by Mrs. Kincheloe, seconded by Mr. Bacon, that

WHEREAS, the Department currently has a contract with the firm of Bellomo-McGee, Inc.

WHEREAS, it has been determined that additional services are necessary to study additional environmental impacts, analysis of additional corridor alternatives, additional land use analysis, additional coordination and public meetings, additional printings of the study newsletters and additional select link analysis work:

06/15/89

This work is identified as:

Washington Bypass Study
From: Baltimore, Maryland
To : Carmel Church, Virginia

Project: R000-076-101, PE100
R000-053-101, PE100
R000-089-101, PE100

WHEREAS, after careful review of the additional services required, a firm proposal has been submitted and just compensation for additional services has been established and are outlined in this Supplemental Agreement No. 1.

NOW, THEREFORE, BE IT RESOLVED, that the Board authorize the execution of Supplemental Agreement No. 1 and it shall become a part of the original agreement (approved February 18, 1986), which currently has a maximum compensation of \$1,200,000.

This Supplemental Agreement No. 1 is in the amount of \$478,972 for services and expenses plus a net fee of \$34,527. The total maximum compensation of the agreement including this and all prior supplements is now \$1,713,499. (50% of the cost to be paid by MDDOT).

Motion carried.

Moved by Mr. Kelly, seconded by Mr. Bacon, that

WHEREAS, Section 33.1-221.1:1 of the Code of Virginia declares it to be in the public interest that access railroad tracks and facilities be constructed to certain industrial and commercial sites; and

WHEREAS, the Russell County Board of Supervisors has, by resolution, requested Industrial Access Railroad Track Funds to serve the Fournier Furniture Corporation; and

06/15/89

WHEREAS, it appears that this request falls within the intent of Section 33.1-221.1:1 and is in accordance with the provisions of the Commonwealth Transportation Board's policy on the use of Industrial Access Railroad Track Funds; and

WHEREAS, it is estimated that the cost of said construction will be \$115,000 based on similar work.

NOW, THEREFORE, BE IT RESOLVED, that the Board hereby approves that \$115,000 of the Industrial Access Railroad Track funds be provided to construct new track to serve the Fournier Furniture Corporation, located in Russell County, contingent upon:

1. All necessary right of way and utility adjustments being provided at no cost to the Commonwealth.
2. All costs above \$115,000, which is allocated herein as the Industrial Rail Access Grant, being borne by the Fournier Furniture Corporation.
3. Execution of an agreement acceptable to the Department which includes provisions for the crossing of the Department's property and assumption of any liability involved.

Motion carried, Mr. Waldman disqualified himself from participation on this issue.

Moved by Mr. Kelly, seconded by Mr. Malbon, that

WHEREAS, the Commonwealth Transportation Board has adopted a policy to govern the use of industrial access railroad track funds; and

WHEREAS, from time to time it becomes necessary to revise or expand the policy based on experience with the administration of the program; and

WHEREAS, it is the sense of this Board that a portion of the present policy should be revised;

06/15/89

NOW, THEREFORE, BE IT RESOLVED, that the Commonwealth Transportation Board hereby adopts the following revision to paragraph number 10 of the Board's policy, adopted June 18, 1987 and amended December 17, 1987, to govern the use of the Industrial Railroad Track funds:

10. No more than twenty-five percent of the funds shall be allocated to any one county, town, or city in any fiscal year unless there are not sufficient applications prior to August 1 of each year to use the available funds. Additional allocations to any given county, town, or city which would exceed the twenty-five percent limitation will be considered in June of said fiscal year, provided funds are available for this purpose. Not more than \$100,000 of unmatched funds may be allocated to any one project in any fiscal year. The unmatched funds may be supplemented with additional matched funds, in which case the matched funds shall not be more than \$50,000 until June of said fiscal year. Any funds in excess of \$100,000 shall be matched dollar-for-dollar by the recipient or from other non-program sources. The amount of Industrial Access Railroad Track funds allocated to a project shall not exceed 15 percent of the capital outlay of the designated business. The 15 percent limitation may be waived at the discretion of the Board.

BE IT FURTHER RESOLVED, that this revision shall become effective immediately for the fiscal year beginning July 1, 1989.

Motion carried.

Following presentation by Mr. Peter Kolakowski, Budget Officer, on motion of Mr. Bacon, seconded by Mr. Humphreys, the Board adopted the fiscal year 1989-90 Budget, as attached.

On motion of Dr. Howlette, seconded by Mr. Malbon, the Richmond-Petersburg Turnpike Maintenance and Operations Budget for fiscal year 1989-90 was approved, as attached.

FINAL

**FY 1989-90
Budget**

Richmond-Petersburg Turnpike

June 1989

RICHMOND-PETERSBURG TURNPIKE
STATEMENT OF ESTIMATED REVENUES & EXPENSES
JULY 1, 1989 - JUNE 30, 1990

FUNDS PROVIDED

Estimated Toll Revenues	\$36,000,000
-------------------------	--------------

FUNDS APPLIED

Maintenance & Operations Budget	\$10,686,905
Reserve Maintenance Fund	\$4,876,950
Construction Fund	
SB 304 Projects	\$27,804,000
Other Construction	\$1,460,000

Total Construction Fund	\$29,264,000

RICHMOND - PETERSBURG TURNPIKE
MAINTENANCE AND OPERATIONS BUDGET
JULY 1, 1989 - JUNE 30, 1990

	CURRENTLY ALLOCATED	AMOUNT REQUESTED	DIFFERENCE
PERSONAL SERVICES (Salaries, wages and fringes)	\$8,263,779	\$8,615,281	\$351,502
CONTRACTUAL SERVICES (Printing, telecommunications, highway repair & maintenance, money services)	\$861,600	\$919,650	\$58,050
SUPPLIES AND MATERIALS (Uniforms, office supplies, building and grounds materials)	\$209,650	\$199,300	(\$10,350)
TRANSFER PAYMENTS (Indirect cost charge)	\$0	\$99,774	\$99,774
CONTINUOUS CHARGES (Equipment rentals, water service, sewer service, electrical service)	\$898,000	\$794,400	(\$103,600)
EQUIPMENT (Office machines, office furniture)	\$57,200	\$53,500	(\$3,700)
PLANT AND IMPROVEMENTS (Minor building improvements)	\$5,000	\$5,000	\$0
TOTAL - MAINTENANCE & OPERATIONS	\$10,295,229	\$10,686,905	\$391,676

06/15/89

On motion of Dr. Howlette, seconded by Mr. Bacon, the Powhite Parkway Extension Maintenance and Operations Budget for fiscal year 1989-90 was approved, as attached.

On motion of Dr. Howlette, seconded by Mr. Bacon, the Dulles Toll Road Maintenance and Operations Budget for fiscal year 1989-90 was approved, as attached.

Mr. Hodge presented the following status report to the Board regarding the John Rolfe Parkway Corridor Study:

The Commonwealth Transportation board at its April meeting instructed VDOT's staff to proceed to initiate feasibility studies for a proposed corridor along the John Rolfe Parkway from a connection with proposed Route 288 just north of the James River to the intersection of Interstate Routes 295/I-64 in the Short Pump area.

A review and analyzation of the traffic anticipated to utilize the proposed John Rolfe Corridor, as was developed in the proposed Route 288 Corridor Study, has unquestionably indicated that there is a need for a John Rolfe Parkway Corridor connection to proposed Route 288 and Route 295.

This proposed corridor remains an integral part of the transportation plans as currently adopted by the County of Henrico.

VDOT's staff feels that these reviews have indicated that a corridor developed along the John Rolfe Parkway Corridor making the connections at Routes 295/I-64 and Route 6 is feasible.

Based on this determination of feasibility, VDOT's staff is proceeding to develop corridor studies to consider a location of a corridor along the John Rolfe Parkway and connecting to Routes 295/I-64 on the north and either Route 6 or proposed Route 288 on the south.

FINAL

**FY 1989-90
Budget**

Powhite Parkway Extension

June 1989

POWHITE PARKWAY EXTENSION TOLL ROAD
STATEMENT OF ESTIMATED REVENUES & EXPENSES
JULY 1, 1989 - JUNE 30, 1990

FUNDS PROVIDED

Estimated Toll Revenues	\$5,709,000
Estimated Interest Earnings	\$412,000
Toll Facilities Revolving Account ¹	\$2,006,108

FUNDS APPLIED

Maintenance & Operations Budget ²	\$1,836,313
Reserve Maintenance Replacement Account ³	\$0
Debt Service (Interest Payment) ⁴	\$5,278,000
Toll Collection Equipment ⁵	\$1,012,795

¹ This allocation is provided by Section 33.1-23.03:4.

² Expenses do not include ordinary roadway maintenance. This will be budgeted and performed by the Virginia Department of Transportation in accordance with the Memorandum of Understanding.

³ No maintenance replacement is anticipated in the toll facility for FY 90. Therefore, no deposit is necessary in accordance with the Memorandum of Understanding.

⁴ Interest payments will be paid from toll revenues in accordance with the Memorandum of Understanding.

⁵ Payment for one half of the toll collection equipment was made in FY 89. The remainder is scheduled to be paid in FY 90. This cost will be initially paid by the Department of Transportation and reimbursement made from the toll road.

POWHITE PARKWAY EXTENSION TOLL ROAD
 MAINTENANCE AND OPERATIONS BUDGET
 JULY 1, 1989 - JUNE 30, 1990

	CURRENTLY ALLOCATED	AMOUNT REQUESTED	DIFFERENCE
PERSONAL SERVICES (Salaries, wages and fringes)	\$1,539,411	\$1,368,841	(\$170,570)
CONTRACTUAL SERVICES (Printing, telecommunications, highway repair & maintenance, money services)	\$210,500	\$251,200	\$40,700
SUPPLIES AND MATERIALS (Uniforms, office supplies, building and grounds materials)	\$91,500	\$51,800	(\$39,700)
TRANSFER PAYMENTS (Indirect cost charge)	\$0	\$11,772	\$11,772
CONTINUOUS CHARGES (Equipment rentals, water service, sewer service, electrical service)	\$160,000	\$146,000	(\$14,000)
EQUIPMENT (Office machines, office furniture)	\$56,770	\$6,700	(\$50,070)
PLANT AND IMPROVEMENTS (Minor building improvements)	\$0	\$0	\$0
TOTAL - MAINTENANCE & OPERATIONS	\$2,058,181	\$1,836,313	(\$221,868)

FINAL

**FY 1989-90
Budget**

Dulles Toll Road

June 1989

DULLES TOLL ROAD
STATEMENT OF ESTIMATED REVENUES & EXPENSES
JULY 1, 1989 - JUNE 30, 1990

FUNDS PROVIDED

Estimated Toll Revenues	\$18,531,000
Estimated Interest Earnings	\$2,218,000

FUNDS APPLIED

Maintenance & Operations Budget ¹	\$ 5,139,401
Reserve Maintenance Replacement Account (Deposit) ²	\$ 595,000
Resurfacing \$540,000	
Fencing \$55,000	
Debt Service Account	
1987 Refinancing Issue	\$ 4,572,000
Estimate of Additional Debt Service Requirements for 1989 Widening Issue	\$ 4,000,000
	\$ 8,572,000
Total Debt Service	\$ 8,572,000
Construction Fund/Fairfax Co. Note Repayment ³	\$ 1,200,000
Toll Collection Equipment ⁴	\$ 8,300,000

¹ Includes expenses for roadway maintenance which will be performed by the Virginia Department of Transportation.

² Deposits of \$45,000 per month will be made into this account to provide funds for the eventual resurfacing of the entire roadway.

³ Deposits of \$100,000 per month will be made into this account so that by 1992 funds will have accumulated to pay the \$4,325,000 due on the note.

⁴ This amount is provided from existing balance in the Improvement Account. The equipment is to replace existing toll machines and installation of an Automatic Vehicle Identification system.

DULLES TOLL FACILITY
 MAINTENANCE AND OPERATIONS BUDGET
 JULY 1, 1989 - JUNE 30, 1990

	CURRENTLY ALLOCATED	AMOUNT REQUESTED	DIFFERENCE
PERSONAL SERVICES (Salaries, wages and fringes)	\$2,177,175	\$3,068,391	\$691,216
CONTRACTUAL SERVICES (Printing, telecommunications, highway repair & maintenance, money services)	\$899,280	\$1,188,568	\$289,288
SUPPLIES AND MATERIALS (Uniforms, office supplies, building and grounds materials)	\$28,000	\$49,210	\$21,210
TRANSFER PAYMENTS (Payments to substate entities & indirect cost charge)	\$0	\$66,761	\$66,761
CONTINUOUS CHARGES (Equipment rentals, water service, sewer service, electrical service)	\$530,302	\$547,366	\$17,064
EQUIPMENT (Office machines, office furniture)	\$12,905	\$122,905	\$110,000
PLANT AND IMPROVEMENTS (Minor building improvements)	\$30,575	\$96,200	\$65,625
TOTAL - MAINTENANCE & OPERATIONS	\$3,878,237	\$5,139,401	\$1,261,164

06/15/89

Staff discussions have been held with the County of Henrico to determine the type of facility to be studied as well as the extent of participation by the County of Henrico.

It has been agreed that a facility providing for a maximum of six lanes would be studied with consideration being given to urban-type interchanges at Three Chopt Road, Church and Pump Roads, and Ridgefield Road. An appropriate interchange configuration and design will be studied at Route 6, as the proposed facility would intersect or interchange with that existing facility.

The proposed facility would be depressed throughout the length of the project as much as appropriate and possible and slopes will be used in lieu of walls whenever possible to do so.

There are several sections throughout the project area that would indicate that a wall-type typical section would be required and appropriately utilized.

Traffic assumptions will assume that the general plans for West Creek will be developed as proposed.

It is anticipated that studies will be complete, appropriate environmental documents will be developed, and a Location Public Hearing will be held December 1989 or sooner, if possible.

The entire study will be conducted on the basis that it will be a State Funded project. Henrico County has agreed to participate in the cost to the extent of developing the engineering plans necessary for right of way and construction at the appropriate time (\$2,000,000). They have also agreed to discuss further the county's participation in the construction cost for the proposed project.

06/15/89

VDOT staff is currently negotiating with the consultant firm who developed the studies on Route 288 to proceed with this project in anticipation of meeting the above noted schedule of December 1989 for the completion of the study and holding of a Location Public Hearing for the proposed project. We are anticipating utilization of the consultant firm who developed the Route 288 studies since this appears to be the most economical, feasible, and expedient method in which to accomplish this schedule within the six months timeframe.

Mr. Humphreys reiterated the Board's desire to have the John Rolfe Parkway built to parkway standards rather than Interstate standards. Mr. Hodge assured Mr. Humphreys that the Board's desire was understood and would be a part of the study along with the County's master plan and the consultant's evaluation for traffic capacity. Mr. Mabry indicated the staff would report to the Board periodically during the study.

Mr. Kelly informed the Board of the interest by local citizens regarding their request for a traffic signal at the intersection of Routes 58 and 35 in front of the Southampton High School. Mr. Kelly asked to go on record stating he had looked at the information available regarding the need for the signal and that the information indicated a traffic signal was not warranted and a problem would be created, not solved, by the installation of a signal. He also stated he felt the jurisdiction should help themselves by having its local police handle the traffic situation.

The Board asked to have their best wishes extended to Mr. Pethel for a speedy recovery.

06/15/89

The next regular meeting will be held in
Norfolk, Virginia, on July 20, 1989.

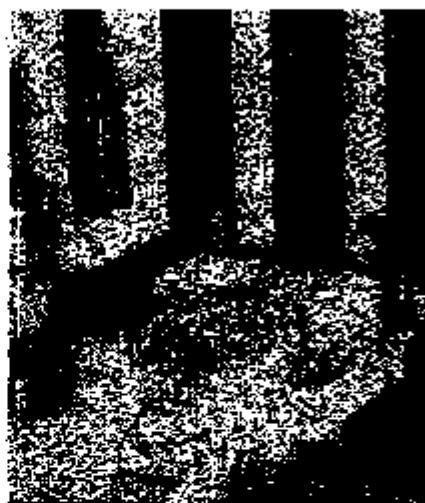
The meeting adjourned at 12:45 p.m.

Approved:


Chairman

Attested:


Secretary



BUDGET

FISCAL YEAR





COMMONWEALTH of VIRGINIA

DEPARTMENT OF TRANSPORTATION
1401 EAST BROAD STREET
RICHMOND, 23219
June 15, 1989

RAY D. PETTEL
COMMISSIONER

Mr. Edgar Bacon	Mr. Joseph A. Leaf
Mr. Donald E. Beyer, Jr.	Mr. C. Roger Malbon
Mr. James L. Davidson, Jr.	Mr. Stephen A. Musselwhite
Dr. H. Philmore Howlette	Mr. Robert A. Quicks
Mr. H. E. Humphreys, Jr.	Mr. Robert W. Smalley
Mr. Herbert V. Kelly, Sr.	Dr. Baphys Saunders Thomas
Mrs. Constance R. Kincheloe	Mr. Byron E. Waldman

The Commonwealth Transportation Board

Dear Members of the Board:

This document contains the Department of Transportation's recommended 1989-90 fiscal year budget for your approval.

The total budget is \$1,844,848,400. This is 1.7% higher than the amount allocated in the current year.

The budget provides a clear indication that the Commonwealth is developing a stable and predictable highway program for the future. Significantly, there is a total construction allocation of \$588 million, including \$142 million for the Route 28 Primary Highway Transportation Improvement District. The construction allocation reflects the increase in State revenues and the continued reduction in Federal funding for needed interstate projects.

As a result of the 1989 General Assembly, the Department has provided additional allocations for worker's compensation expenses, the access road programs, and increased indirect cost requirements. In addition, allocations to the various programs include the 3.25% pay increase for all employees. Funding is also provided for the 605 new positions approved by the General Assembly, the Northern Virginia full service district initiative, and continuation of previous management initiatives.

Finally, funding for other modes of transportation is provided through Transportation Trust Fund allocations to the mass transit fund, airport fund, and port fund. I will be glad to answer any questions you may have concerning the overall budget.

Sincerely,


Ray D. Pettel, Commissioner

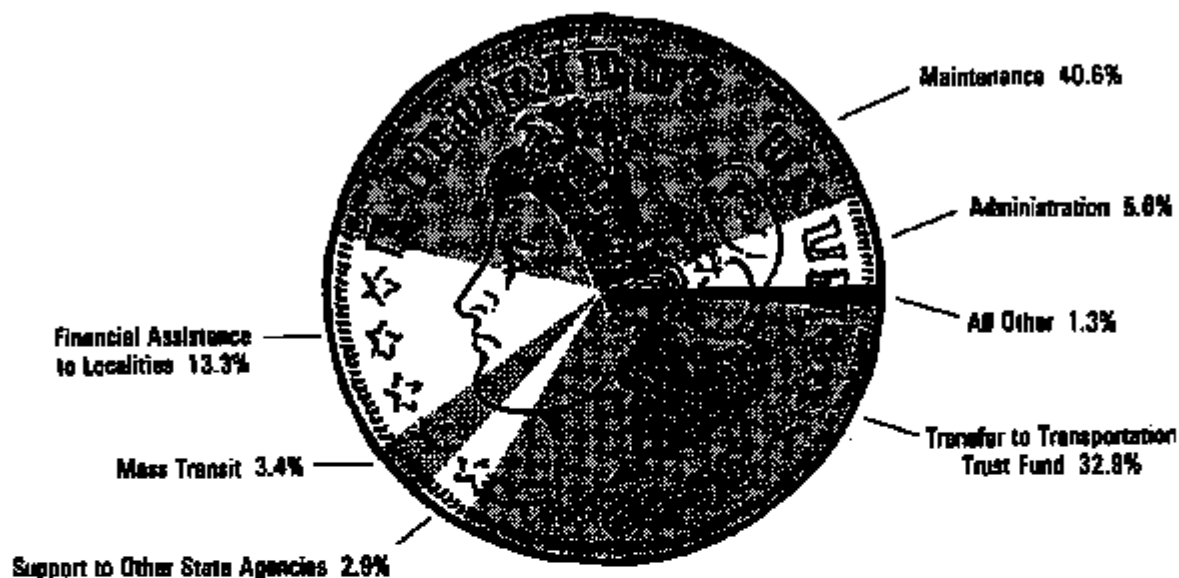
cc: Secretary of Transportation
and Public Safety

TABLE OF CONTENTS

	PAGE
SUMMARY OF REVENUES AND ALLOCATIONS	5
Highway Maintenance and Operating Fund	6
Transportation Trust Fund	8
ESTIMATE OF REVENUES	11
Highway Maintenance and Operating Fund	12
Transportation Trust Fund	14
RECOMMENDED ALLOCATION OF ESTIMATED REVENUES	15
Highway Maintenance and Operating Fund	16
Transportation Trust Fund	18
DETAIL DISTRIBUTION OF 1986 SPECIAL SESSION REVENUE	21
Transportation Trust Fund	22
DETAIL DISTRIBUTION OF MASS TRANSIT PROGRAM	23
Proposed Mass Transit Program	24
CAPITAL OUTLAY BUDGET	25
Transportation Trust Fund	26
CALCULATION OF FUNDS AVAILABLE FOR TRANSFER	31
HIGHWAY CONSTRUCTION SUMMARY	33
Transportation Trust Fund	34
COMMONWEALTH TRANSPORTATION FUNDS DISTRIBUTION	37
FOOTNOTES	41

SUMMARY OF REVENUES AND ALLOCATIONS

**ESTIMATE OF REVENUES
HIGHWAY MAINTENANCE AND OPERATING FUND
FISCAL YEAR 1989 - 90**



STATE SOURCES

FUEL TAX	\$534,262,000
MOTOR VEHICLE SALES AND USE	186,901,000
MOTOR VEHICLE LICENSES	113,579,000
OTHER HIGHWAY USER REVENUES	39,959,000
UNALLOCATED BALANCE	1,988,000
TOTAL STATE SOURCES	876,689,000

FEDERAL AID

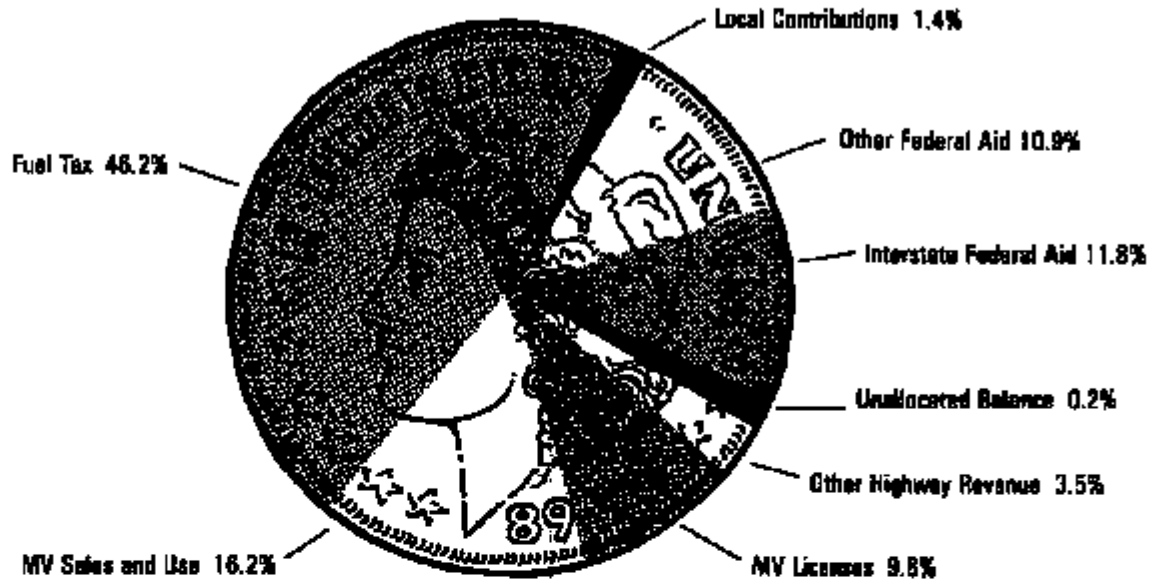
INTERSTATE FEDERAL AID	136,202,000
OTHER FEDERAL AID	126,312,000
TOTAL FEDERAL AID	262,514,000

OTHER SOURCES

LOCAL CONTRIBUTIONS	17,000,000
TOTAL OTHER SOURCES	17,000,000

TOTAL ESTIMATED REVENUES **\$1,156,203,000**

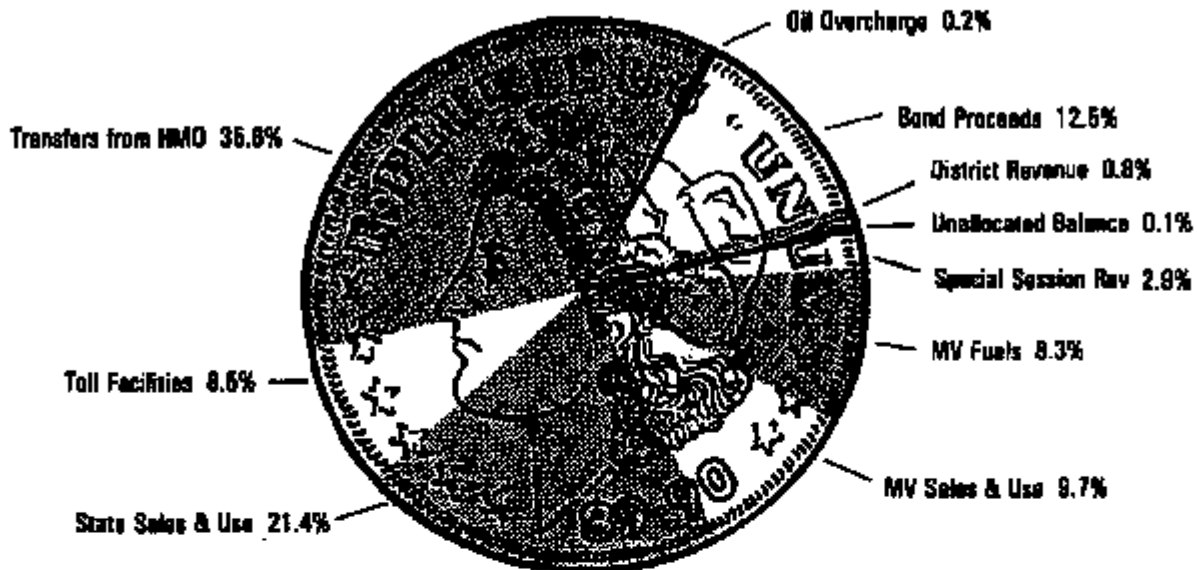
**RECOMMENDED ALLOCATION OF REVENUES
HIGHWAY MAINTENANCE AND OPERATING FUND
FISCAL YEAR 1989 - 90**



OPERATING BUDGET

ADMINISTRATIVE AND SUPPORT SERVICES	\$64,356,100
GROUND TRANSPORTATION REGULATION	5,797,400
GROUND TRANSPORTATION SYSTEM	
PLANNING AND RESEARCH	2,703,000
HIGHWAY SYSTEM MAINTENANCE	469,421,200
GROUND TRANSPORTATION SYSTEM SAFETY	5,326,100
FINANCIAL ASSISTANCE TO LOCALITIES	
FOR MAINTENANCE	153,265,300
MASS TRANSIT ASSISTANCE	39,431,800
LAND MANAGEMENT	471,800
TOTAL OPERATING BUDGET	740,772,700
SUPPORT TO OTHER STATE AGENCIES	34,638,500
TRANSFER TO TRANSPORTATION TRUST FUND	380,791,800
TOTAL H M O FUNDS ALLOCATED	\$1,156,203,000

**ESTIMATE OF REVENUES
TRANSPORTATION TRUST FUND
FISCAL YEAR 1989 - 90**



SPECIAL SESSION SOURCES

STATE SALES AND USE	\$228,900,000
M V SALES AND USE	103,874,000
M V FUELS	89,055,000
OTHER SPECIAL SESSION REVENUE	30,872,000
UNALLOCATED BALANCE	699,500
TOTAL SPECIAL SESSION SOURCES	453,400,500

EXISTING SOURCES

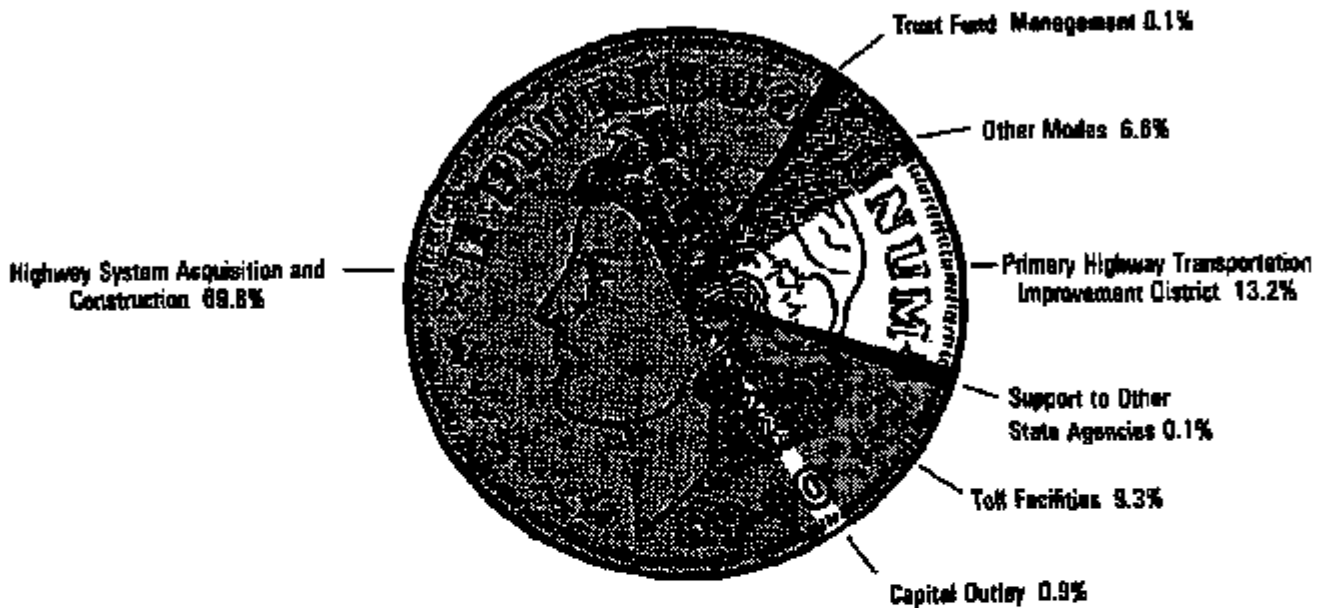
TOLL FACILITIES	91,137,500
TRANSFER FROM H M O FUND	380,791,800
TOTAL EXISTING SOURCES	471,929,300

OTHER TRUST FUND REVENUES

PRIMARY HIGHWAY TRANSPORTATION IMPROVEMENT DISTRICT REVENUE	8,523,000
PRIMARY HIGHWAY TRANSPORTATION IMPROVEMENT DISTRICT BOND PROCEEDS	133,584,400
OIL OVERCHARGE SETTLEMENT	2,000,000

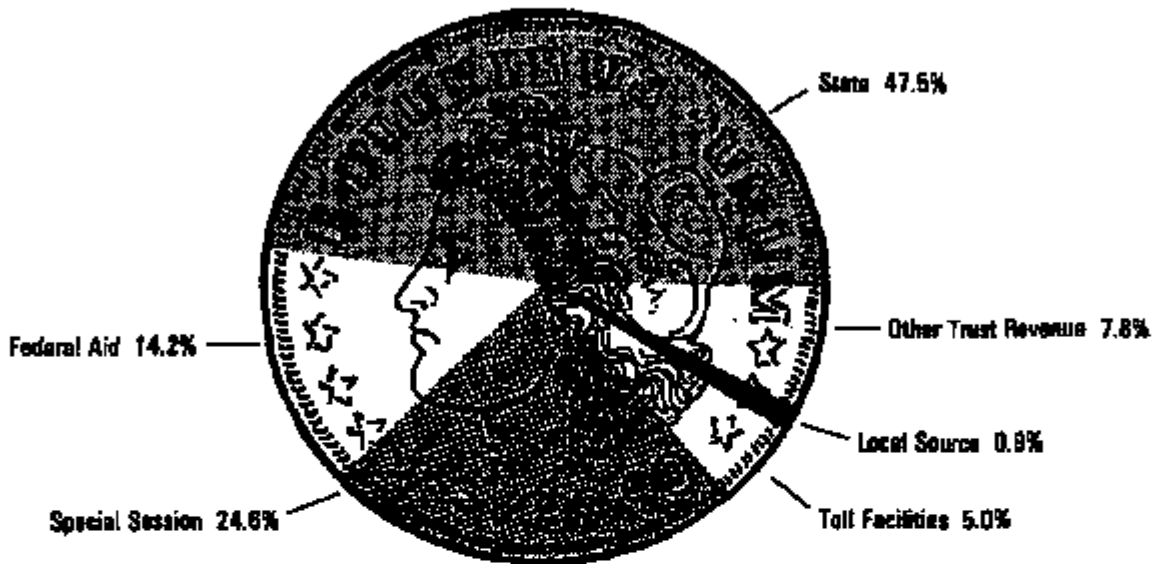
TOTAL ESTIMATED REVENUES **\$1,069,437,200**

**RECOMMENDED ALLOCATION OF REVENUES
TRANSPORTATION TRUST FUND
FISCAL YEAR 1989 - 90**



HIGHWAY SYSTEM ACQUISITION AND CONSTRUCTION	\$745,961,700
PRIMARY HIGHWAY TRANSPORTATION IMPROVEMENT DISTRICT	142,107,400
TOLL FACILITY OPERATIONS	100,391,700
MASS TRANSIT	40,097,500
PORT AND PORT FACILITY ASSISTANCE	19,287,900
CAPITAL OUTLAY	9,154,200
AIRPORT ASSISTANCE	11,314,900
SUPPORT TO OTHER STATE AGENCIES	798,000
TRUST FUND MANAGEMENT	323,900
 TOTAL FUNDS ALLOCATED	 \$1,069,437,200

**GRAND TOTAL ESTIMATE OF REVENUES
HIGHWAY MAINTENANCE AND OPERATING FUND
AND TRANSPORTATION TRUST FUND
FISCAL YEAR 1989 - 90**



H M O FUND	
STATE SOURCES	\$876,689,000
FEDERAL AID	262,514,000
LOCAL SOURCES	17,000,000
TOTAL H M O FUND	1,156,203,000
TRANSPORTATION TRUST FUND	
SPECIAL SESSION SOURCES	453,400,500
TOLL FACILITIES	91,137,500
OTHER TRUST FUND REVENUES	144,107,400
TOTAL TRANSPORTATION TRUST FUND	688,645,400
GRAND TOTAL ESTIMATED REVENUES	\$1,844,848,400

**ESTIMATE OF REVENUES
HIGHWAY MAINTENANCE AND OPERATING FUND
TRANSPORTATION TRUST FUND**

ESTIMATE OF REVENUES
FISCAL YEAR 1989 - 90

HIGHWAY MAINTENANCE AND OPERATING FUND	BUDGETED 1988-89	ESTIMATED 1989-90	INCREASE (DECREASE)
STATE REVENUE SOURCES			
Motor Vehicle Fuels Tax - BWV	\$488,687,000	\$510,311,000	\$21,624,000
Motor Vehicle Fuels Tax - SCC	21,782,000	23,951,000	2,169,000
Fuel Tax - Total	510,469,000	534,262,000	23,793,000
Motor Vehicle Sales and Use Tax	182,760,000	186,901,000	4,141,000
International Registration Plan	25,179,000	29,044,000	3,867,000
Motor Vehicle Licenses	116,072,000	113,579,000	(2,493,000)
Overload Permits	1,579,000	1,733,000	154,000
Reloage Permit Fees - DOT	220,000	260,000	40,000
Boating Permit Fees	760,000	810,000	70,000
Highway Permit Fees	1,050,000	1,285,000	235,000
Bridge And Ferry Tolls - Jamestown	650,000	680,000	30,000
Land and Building Rentals	4,000	4,000	0
Truck Weighing Fees	120,000	120,000	0
Liquidated Damages - Weight Violations	3,395,000	3,597,000	202,000
Fines for Littering Highways	1,000	1,000	0
Miscellaneous Revenues	164,000	316,000	152,000
Outdoor Advertising	113,000	114,000	1,000
Interagency Revenue Transfer - SCC	1,737,000	1,093,000	(644,000)
Logo Signs	0	900,000	900,000
			1/
SUBTOTAL	845,126,000	876,701,000	29,577,000
Unallocated Balance	16,983,600	1,988,000	(14,995,600)
			2/
TOTAL STATE REVENUE SOURCES	862,107,600	878,689,000	16,581,400

**ESTIMATE OF REVENUES
FISCAL YEAR 1989 - 90**

HIGHWAY MAINTENANCE AND OPERATING FUND (continued)	BUDGETED 1988-89	ESTIMATED 1989-90	INCREASE (DECREASE)
FEDERAL AID			
Interstate Construction	567,498,000	635,172,000	(632,328,000)
Interstate Discretionary	116,121,000	31,452,000	(84,669,000)
Interstate 4R	68,745,000	69,378,000	633,000
Interstate Transfers	2,832,000	0	(2,832,000)
Interstate Total	755,196,000	735,922,000	(119,014,000)
Minimum Allocation	6,795,000	0	(6,795,000)
Consolidated Primary	49,099,000	49,312,000	213,000
Rural Secondary	12,668,000	12,787,000	39,000
Urban System	14,394,000	14,394,000	0
Bridge Replacement	27,773,000	27,698,000	(165,000)
Hazard Elimination	3,518,000	3,525,000	7,000
Rail - Highway Crossings	2,709,000	2,725,000	16,000
Planning and Research - NPE	3,641,000	3,183,000	(478,000)
Metra Planning - PL	992,000	977,000	(15,000)
Forest Highways	867,000	668,000	(199,000)
Support Services	173,000	245,000	72,000
Rail Continuum Assistance	703,000	600,000	(300,000)
UMTA	3,068,000	3,008,000	0
Appalachian	2,000,000	3,400,000	1,400,000
Public Lands	0	180,000	180,000
Economic Development Administration Grant	0	248,000	248,000
Demonstration Projects - George P. Coleman Bridge	1,380,000	648,000	(640,000)
- Roanoke Silver Parkway	4,600,000	2,400,000	(2,400,000)
- HOV Lanes	0	500,000	500,000
TOTAL FEDERAL AID	389,783,000	262,914,000	(127,271,000)
LOCAL REVENUE SOURCES			
Urban Construction Projects	7,600,000	3,000,000	(4,600,000) 3/
Revenue Sharing	5,000,000	5,000,000	0
Coal Severance Tax Roads	9,000,000	9,000,000	0
TOTAL LOCAL REVENUE SOURCES	21,600,000	17,000,000	(4,600,000)
TOTAL HIGHWAY MAINTENANCE AND OPERATING REVENUE	41,273,492,600	41,156,203,000	(117,289,600)

**ESTIMATE OF REVENUE
FISCAL YEAR 1989 - 90**

TRANSPORTATION TRUST FUND	BUDGETED	ESTIMATED	(INCREASE
-----	-----	-----	(DECREASE)
-----	-----	-----	-----
EXISTING REVENUE SOURCES			
Toll Facilities	\$107,849,000	\$91,137,500	(\$16,711,500)
TOTAL EXISTING REVENUE SOURCES	107,849,000	91,137,500	(16,711,500)
1986 SPECIAL SESSION REVENUE SOURCES			
Motor Vehicle Fuels Tax	80,870,000	82,850,000	1,980,000
Road Tax	4,900,000	5,197,000	299,000
Aviation Fuels Tax	996,000	1,008,000	12,000
State General Sales and Use Tax	211,800,000	228,900,000	17,100,000
Motor Vehicle Sales and Use Tax	102,148,000	105,874,000	3,726,000
Motor Vehicle Rental Tax	2,905,000	3,522,000	617,000
License Fees	18,744,000	16,074,000	(2,670,000)
SUBTOTAL	629,432,000	647,425,000	18,000,000
Interest Earnings			
Mass Transit Fund	473,000	732,000	259,000
Airport Fund	146,000	593,000	447,000
Port Fund	543,000	384,000	(159,000)
Toll Facilities Revolving Account	8,796,000	9,567,000	771,000
SUBTOTAL	9,958,000	11,276,000	1,518,000
TOTAL SPECIAL SESSION REVENUE SOURCES	430,210,000	452,701,000	22,491,000
OTHER TRUST FUND REVENUES			
Primary Highway Transportation Improvement District Revenue	0	8,523,000	8,523,000 4/
Primary Highway Transportation Improvement District Road Proceeds	0	133,586,400	133,586,400 4/
Oil Overcharge Settlement	0	2,000,000	2,000,000 5/
Unallocated Balance	2,609,900	609,500	(1,900,400) 2/
TOTAL TRANSPORTATION TRUST REVENUE	540,664,900	605,645,400	147,980,500
GRAND TOTAL REVENUE - HIGHWAY MAINTENANCE AND OPERATING FUND AND TRANSPORTATION TRUST FUND	\$1,814,157,500	\$1,844,848,400	\$30,690,900

**RECOMMENDED ALLOCATION OF ESTIMATED REVENUES
HIGHWAY MAINTENANCE AND OPERATING FUND
TRANSPORTATION TRUST FUND**

**RECOMMENDED ALLOCATION OF ESTIMATED REVENUES
FISCAL YEAR 1989 - 90**

HIGHWAY MAINTENANCE AND OPERATING FUND -----	ALLOCATED 1988-89 -----	RECOMMENDED 1989-90 -----	INCREASE (DECREASE) -----
ADMINISTRATIVE AND SUPPORT SERVICES			
General Management and Direction			
Administration and Supervision	438,077,600	844,693,200	406,615,600
Pay for Performance	2,000,000	0	(2,000,000)
Subtotal - General Management and Direction	40,077,600	44,693,200	4,615,600
Computer Services	11,285,400	12,484,300	1,208,900
Physical Plant Services	7,047,300	7,168,600	121,300
TOTAL ADMINISTRATIVE AND SUPPORT SERVICES	58,410,300	64,356,100	5,945,800
GROUND TRANSPORTATION REGULATION			
Mobile Truck Weighing	1,579,400	1,597,200	17,800
Interstate Permanent Truck Weighing	2,589,400	2,849,800	260,400
Primary Permanent Truck Weighing	985,100	1,331,500	346,400
Truck Volume and Weight Study	17,500	18,900	1,400
TOTAL GROUND TRANSPORTATION REGULATION	5,171,400	5,797,400	626,000
GROUND TRANSPORTATION SYSTEM PLANNING AND RESEARCH			
Research Council - Administration	857,400	972,600	115,200
Research Council - State Research	1,805,200	1,730,400	(74,800)
TOTAL GROUND TRANSPORTATION SYSTEM PLANNING AND RESEARCH	1,862,600	2,703,000	840,400
HIGHWAY SYSTEM MAINTENANCE			
Interstate Maintenance	66,483,200	98,261,200	31,778,000
Primary Maintenance	159,082,600	175,403,600	16,321,000
Secondary Maintenance	195,639,600	195,576,400	(63,200)
TOTAL HIGHWAY SYSTEM MAINTENANCE	419,205,400	469,241,200	50,035,800
GROUND TRANSPORTATION SYSTEM SAFETY			
Ground Transportation Safety Research and Analysis	4,308,900	5,326,100	1,017,200
TOTAL GROUND TRANSPORTATION SYSTEM SAFETY	4,308,900	5,326,100	1,017,200

**RECOMMENDED ALLOCATION OF ESTIMATED REVENUES
FISCAL YEAR 1989 - 90**

HIGHWAY MAINTENANCE AND OPERATING FUND (continued)	ALLOCATED 1988-89	RECOMMENDED 1989-90	INCREASE (DECREASE)
-----	-----	-----	-----
FINANCIAL ASSISTANCE TO LOCALITIES			
FOR GROUND TRANSPORTATION			
Financial Assistance for City Street Maintenance	\$126,259,800	\$133,683,500	\$7,423,700
Financial Assistance for County Road Maintenance - Arlington County	8,274,300	8,512,600	238,300
Maricopa County	10,232,800	11,069,200	836,400
Subtotal - County Road Maintenance	18,507,100	19,581,800	1,074,700
TOTAL FINANCIAL ASSISTANCE TO LOCALITIES FOR GROUND TRANSPORTATION	144,764,900	153,265,300	8,496,400
MASS TRANSIT ASSISTANCE			
State Aid for Mass Transit	39,050,000	39,050,000	0
Washington Metropolitan Area Transit Commission	136,000	139,000	3,000
UNTA Grants	3,000,000	3,000,000	0
Rail Continuation Assistance Grants	700,000	400,000	(300,000)
Public Transportation - Routine Operations	848,800	842,800	(6,000)
TOTAL MASS TRANSIT ASSISTANCE	39,734,800	39,431,800	(303,000)
LAND MANAGEMENT			
Regulation of Outdoor Advertising	458,400	471,800	21,400
TOTAL LAND MANAGEMENT	458,400	471,800	21,400
SUPPORT TO OTHER STATE AGENCIES			
Alcohol Fuel Production Incentive Fund	27,085,000	26,000,000	(1,085,000)
Department of Education	135,000	135,000	0
Marine Resources Commission	530,300	530,300	0
Secretary of Transportation and Public Safety	282,100	302,700	20,600
Department of General Services	128,000	928,000	800,000
Department of Agriculture and Consumer Services	75,000	85,000	10,000
Department of Law	733,700	804,800	71,100
Department of State Police	1,254,900	2,300,000	745,100
Chesapeake Bay Initiatives	3,359,700	3,352,700	195,000
TOTAL SUPPORT TO OTHER STATE AGENCIES	33,883,700	34,638,500	754,800
TOTAL ALLOCATION FROM HIGHWAY MAINTENANCE AND OPERATING FUND	\$707,794,400	\$775,411,200	\$67,616,800

**RECOMMENDED ALLOCATION OF ESTIMATED REVENUES
FISCAL YEAR 1989 - 90**

TRANSPORTATION TRUST FUND -----	ALLOCATED 1988-89 -----	RECOMMENDED 1989-90 -----	(INCREASE (DECREASE) -----	
LEAKING UNDERGROUND STORAGE TANK FUND	\$3,435,000	80	(\$3,435,000)	
TRUST FUND MANAGEMENT				
Department of Taxation	0	647,000	647,000	7/
Department of Transportation	320,700	323,900	3,200	
Department of Treasury	143,100	151,000	7,900	
TOTAL TRUST FUND MANAGEMENT	463,800	1,121,900	658,100	
MASS TRANSIT				
Special Programs	571,600	571,500	59,900	
Formula Assistance	25,066,300	28,001,600	2,935,300	
Capital Assistance	8,525,900	11,524,600	2,998,700	
TOTAL MASS TRANSIT	34,103,800	40,097,700	5,993,700	
AIRPORT ASSISTANCE				
Air Carrier Airports	3,901,200	4,525,900	624,700	
Air Carrier and Helicopter Airports	3,901,200	4,525,900	624,700	
General Aviation Airports	1,950,700	2,263,100	312,400	
TOTAL AIRPORT ASSISTANCE	9,753,100	11,314,900	1,561,800	
PORT AND PORT FACILITY ASSISTANCE				
Port Capital Facilities	15,132,600	13,662,300	529,700	
Preservation of Capital Facilities	2,221,300	3,625,600	1,404,300	
TOTAL PORT AND PORT FACILITY ASSISTANCE	17,353,900	10,287,900	1,034,000	
TOLL FACILITY OPERATIONS				
Acquisition and Construction	68,496,000	44,839,800	(23,656,200)	
Debt Service	11,460,000	16,583,000	5,123,000	
Maintenance and Operation	27,892,900	29,774,700	1,881,800	
Toll Facilities Revolving Fund	17,092,000	9,254,200	(7,837,800)	
TOTAL TOLL FACILITY OPERATIONS	124,940,900	100,391,700	(24,549,200)	
CAPITAL OUTLAY	7,249,800	9,154,200	1,904,400	

**RECOMMENDED ALLOCATION OF ESTIMATED REVENUES
FISCAL YEAR 1989 - 90**

TRANSPORTATION TRUST FUND (continued)	ALLOCATED 1988-89	RECOMMENDED 1989-90	INCREASE (DECREASE)	
-----	-----	-----	-----	
HIGHWAY ACQUISITION AND CONSTRUCTION				
ACCESS ROADS AND OTHER CONSTRUCTION				
Industrial Access	\$5,000,000	\$5,000,000	0	8/
Recreational Access	1,300,000	3,000,000	1,500,000	8/
Airport Access	500,000	600,000	100,000	8/
Industrial Access Railroad Tracks	800,000	1,200,000	400,000	8/
Bicentennial and Cultural Access	500,000	250,000	(250,000)	8/
Revenue Sharing	10,000,000	10,000,000	0	
Coal Severance Tax Roads	9,000,000	9,000,000	0	
Forest Highways	807,000	668,000	(139,000)	
Interstate Transfers	2,852,000	0	(2,852,000)	
Appalachian	2,000,000	3,400,000	1,400,000	
Demonstration Projects	6,080,000	3,728,000	(2,352,000)	
TOTAL ACCESS ROADS AND OTHER CONSTRUCTION	39,039,000	38,906,000	(2,133,000)	
CONSTRUCTION MANAGEMENT				
General Management	38,668,400	46,648,400	7,671,000	
Construction Training - Supported Services	615,000	615,000	0	
Financial Assistance for Transportation Planning	1,178,700	1,194,400	15,700	
Highway Planning and Research	4,124,000	3,592,200	(531,800)	
CONSTRUCTION MANAGEMENT	44,586,100	52,042,000	7,456,900	
PRIMARY HIGHWAY TRANSPORTATION IMPROVEMENT				
DISTRICT CONSTRUCTION	0	133,584,400	133,584,400	4/
PRIMARY HIGHWAY TRANSPORTATION IMPROVEMENT				
DISTRICT BEST SERVICE	0	8,523,800	8,523,800	4/
INTERSTATE CONSTRUCTION	286,777,000	155,098,000	(131,679,000)	
PRIMARY CONSTRUCTION				
Formula	199,797,300	188,024,200	(11,773,100)	9/
TOTAL PRIMARY CONSTRUCTION	199,797,300	188,024,200	(11,773,100)	
SECONDARY CONSTRUCTION				
Formula	149,848,100	140,919,400	(8,928,700)	9/
Unpaved Roads	31,264,200	29,062,700	(2,201,500)	
TOTAL SECONDARY CONSTRUCTION	181,114,300	169,982,100	(11,132,200)	
URBAN CONSTRUCTION				
Formula	149,848,100	140,909,400	(8,938,700)	
Local Match	7,600,000	3,800,000	(4,800,000)	3/
TOTAL URBAN CONSTRUCTION	157,448,100	143,909,400	(13,538,700)	
TOTAL HIGHWAY ACQUISITION AND CONSTRUCTION	909,662,800	888,069,100	(21,593,700)	
TOTAL ALLOCATION FROM TRANSPORTATION TRUST FUND	1,106,363,100	1,069,437,200	(36,925,900)	
BRAND TOTAL ALLOCATION - HIGHWAY MAINTENANCE AND				
OPERATING FUND AND TRANSPORTATION TRUST FUND	\$1,814,157,500	\$1,844,848,400	\$30,690,900	

**DETAIL DISTRIBUTION OF 1986 SPECIAL SESSION REVENUE
TRANSPORTATION TRUST FUND**

**DETAIL DISTRIBUTION OF 1986 SPECIAL SESSION REVENUE
RECOMMENDED ALLOCATION OF ESTIMATED REVENUES
FISCAL YEAR 1989 - 90**

	ALLOCATED 1988-89 -----	RECOMMENDED 1989-90 -----	INCREASE (DECREASE) -----	
TRANSPORTATION TRUST FUND -----				
1986 SPECIAL SESSION REVENUE	\$420,452,000	\$441,425,000	\$20,973,000	
Less: Trust Fund Management	463,800	1,121,900	658,100	7/
Leaking Underground Storage Tank Fund	3,435,000	0	(3,435,000)	
NET SPECIAL SESSION REVENUE AVAILABLE FOR DISTRIBUTION	416,553,200	440,303,100	23,749,900	
INTEREST EARNINGS	9,750,000	11,276,000	1,518,000	
TOTAL AVAILABLE FOR DISTRIBUTION	426,311,200	431,579,100	25,267,900	
DISTRIBUTION				
MASS TRANSIT ASSISTANCE (3.4%)				
1986 Special Session Revenue	33,573,300	37,272,600	3,699,300	
Interest Earnings	473,000	732,000	259,000	
Subtotal	34,046,300	38,004,600	3,958,300	
Less: Indirect Cost	52,500	92,900	40,400	
NET MASS TRANSIT ASSISTANCE	34,051,300	38,004,600	3,953,300	10/
AIRPORT ASSISTANCE (2.4%)				
1986 Special Session Revenue	9,407,100	10,721,900	1,314,800	
Interest Earnings	146,000	593,000	447,000	
Subtotal	9,553,100	11,314,900	1,761,800	
Less: Indirect Cost	13,000	26,500	11,500	
NET AIRPORT ASSISTANCE	9,738,100	11,288,400	1,550,300	
PORT AND PORT FACILITY ASSISTANCE (4.2%)				
1986 Special Session Revenue	16,810,900	18,903,900	2,093,000	
Interest Earnings	543,000	384,000	(159,000)	
Subtotal	17,353,900	19,287,900	1,934,000	
Less: Indirect Cost	26,200	46,400	20,200	
NET PORT AND PORT FACILITY ASSISTANCE	17,327,700	19,241,500	1,913,800	
TOLL FACILITIES REVOLVING				
Interest Earnings	8,596,000	9,347,000	751,000	
NET TOLL FACILITIES REVOLVING	8,596,000	9,347,000	751,000	
HIWAY CONSTRUCTION (85.0%)				
1986 Special Session Revenue	354,506,600	373,311,800	18,807,400	
Less: Indirect Cost	331,200	939,600	608,400	
NET HIWAY CONSTRUCTION	354,175,400	372,372,200	18,199,000	
TOTAL DISTRIBUTION	426,311,200	431,579,100	25,267,900	

**DETAIL DISTRIBUTION OF MASS TRANSIT PROGRAM
HIGHWAY MAINTENANCE AND OPERATING FUND
TRANSPORTATION TRUST FUND**

**DETAIL DISTRIBUTION OF MASS TRANSIT PROGRAM
RECOMMENDED ALLOCATION OF ESTIMATED REVENUES
FISCAL YEAR 1989 - 90**

	ALLOCATED 1988-89 -----	RECOMMENDED 1989-90 -----	INCREASE (DECREASE) -----
PROPOSED MASS TRANSIT PROGRAM			
Northern Virginia Transportation Commission	350,911,882	850,799,933	(511,949)
Commuter Refl	0	2,088,918	2,088,918
Prince William County	0	1,249,216	1,249,216
Tidewater Transportation District Commission	5,900,478	5,881,472	(19,006)
Richmond Area	4,282,638	4,650,831	367,993
Peninsula Transportation District Commission	2,498,776	3,223,337	724,561
Roanoke Area	569,593	866,700	(22,893)
Lynchburg Area	666,617	793,167	126,550
Tri-Cities Area	258,620	266,456	(12,164)
Bristol Area	43,403	48,516	3,113
Charlottesville Area	414,585	369,259	(45,346)
Danville Area	179,514	322,859	143,345
Non Urbanized Areas	2,978,181	1,425,350	(1,552,831)
Ridesharing Program Assistance	618,333	665,086	44,753
Experimental Public Transportation Assistance Projects	580,956	548,627	(32,309)
Public Transportation Promotion and Operations Studies	83,500	52,860	(30,640)
Substate State Aid to Mass Transit	70,289,956	73,210,367	2,921,311
Washington Metropolitan Area Transit Commission	136,000	139,000	3,000
MTA Grants	3,000,000	3,000,000	0
Rail Continuation Assistance Grants	700,000	400,000	(300,000)
Public Transportation - Routine Operations	848,800	642,880	(6,000)
TOTAL COMBINED ALLOCATION	876,973,856	877,992,167	92,618,311
FUNDING SOURCES			
Undistributed Prior Year Highway Maintenance and Operating Funds	801,204	239,849	(565,555)
Undistributed Prior Year Mass Transit Trust Funds	444,752	16,618	(428,134)
Highway Maintenance and Operating Fund Allocation	39,676,400	39,335,300	(341,300)
Mass Transit Trust Fund Allocation	34,051,300	38,004,600	3,953,300 10/
TOTAL	74,973,856	77,992,167	2,618,311

CAPITAL OUTLAY BUDGET
TRANSPORTATION TRUST FUND

CAPITAL OUTLAY BUDGET
 RECOMMENDED ALLOCATION OF ESTIMATED REVENUES
 TRANSPORTATION TRUST FUND
 FISCAL YEAR 1989 - 90

	RECOMMENDED 1989-90 -----
FROM TRANSPORTATION TRUST FUND	
CONSTRUCTION: CHEMICAL STORAGE BUILDINGS	
Bristol District	
Fort Blackmore Area Headquarters	\$120,000
Beskins Area Headquarters	150,000
Big Rock Area Headquarters	150,000
Sugar Grove Area Headquarters	120,000
Salem District	
Vests Area Headquarters	86,000
Richmond District	
Amelia Area Headquarters	200,000
New Kent Area Headquarters	200,000
Chase City Area Headquarters	260,000
Manchester Area Headquarters	100,000
Ashland Residency	100,000
Charles City Area Headquarters	120,000
Bethia Area Headquarters	144,000
Buffalo District	
Eastville Area Headquarters	80,000
Waverly Area Headquarters	70,000
Temperanceville Area Headquarters	80,000
Culpeper District	
Orange Area Headquarters	65,300
Stamton District	
Front Royal Area Headquarters	153,800
Berryville Area Headquarters	138,550
Northern Virginia District	
St. Louis Area Headquarters	115,000
Herrifield Area Headquarters	175,000
TOTAL CONSTRUCTION: CHEMICAL STORAGE BUILDINGS	\$2,627,650

CAPITAL OUTLAY BUDGET
 RECOMMENDED ALLOCATION OF ESTIMATED REVENUES
 TRANSPORTATION TRUST FUND
 FISCAL YEAR 1989 - 90

	RECOMMENDED 1989-90 *****
FROM TRANSPORTATION TRUST FUND	
ACQUISITION: LAND FOR EXPANSION	
Bristol District	
High Point Area Headquarters	945,000
TOTAL ACQUISITION: LAND FOR EXPANSION	45,000
 NEW CONSTRUCTION: EQUIPMENT STORAGE BUILDINGS/SHOPS	
Bristol District	
Tazewell Area Headquarters	279,700
Fort Blackmore Area Headquarters	279,700
Gales District	
Check Area Headquarters	125,200
Patrick Springs Area Headquarters	124,700
Christiansburg Area Headquarters	341,500
Richmond District	
Victoria Area Headquarters	404,500
Suffolk District	
Windsor Area Headquarters	147,400
Maverly Area Headquarters	182,200
Hampton Rd. Bridge Tunnel (N. Island)	19,100
Fredericksburg District	
Richmond Co. Area Headquarters	75,300
Stafford Area Headquarters	77,200
Eskimo Area Headquarters	77,200
Stafford Area Headquarters	34,200
Culpeper District	
Orange Area Headquarters	108,700
Stauben District	
Stauben District Complex	376,800
TOTAL EQUIPMENT STORAGE BUILDINGS/SHOPS	92,335,000

**CAPITAL OUTLAY BUDGET
RECOMMENDED ALLOCATION OF ESTIMATED REVENUES
TRANSPORTATION TRUST FUND
FISCAL YEAR 1989 - 90**

	RECOMMENDED 1989-90 -----
FROM TRANSPORTATION TRUST FUND	
NEW CONSTRUCTION: OFFICE BUILDINGS AND ADDITIONS	
Salem District	
Dublin Area Headquarters	638,700
New Castle Area Headquarters	36,800
Richmond District	
Richmond District Complex	54,200
Fredericksburg District	
Hague Area Headquarters	20,500
Culpeper District	
Warrington Residency	401,800
Orange Area Headquarters	63,000
TOTAL OFFICE BUILDINGS AND ADDITIONS	609,600
NEW CONSTRUCTION: SHOP ADDITIONS	
Lynchburg District	
Farmville Area Headquarters	265,000
Halifax Residency	263,000
Richmond District	
Sandston Residency	111,000
Suffolk District	
Waverly Residency	37,300
Northern Virginia District	
Manassas Residency	128,200
TOTAL SHOP ADDITIONS	804,500
NEW CONSTRUCTION: PAINT STORAGE BUILDINGS	
Salem District	
Salem District Complex	88,200
Northern Virginia District	
Fairfax Area Headquarters	457,500
TOTAL PAINT STORAGE BUILDINGS	545,700

CAPITAL OUTLAY BUDGET
RECOMMENDED ALLOCATION OF ESTIMATED REVENUES
TRANSPORTATION TRUST FUND
FISCAL YEAR 1989 - 90

	RECOMMENDED 1989-90 -----
NEW CONSTRUCTION: MATERIAL STORAGE BUILDINGS	
Suffolk District	
Capron Area Headquarters	339,500
Fredericksburg District	
Farmers Area Headquarters	67,600
Tappahannock Area Headquarters	37,500
TOTAL MATERIAL STORAGE BUILDINGS	444,600
MAINTAIN EXISTING VDOT CENTRAL OFFICE STRUCTURES	820,000
SOUTH HOSPITAL (CENTRAL OFFICE)	1,084,300
CAPITAL OUTLAY CARRY FORWARD	(102,450)
TOTAL FROM TRANSPORTATION TRUST FUND	99,154,200

**CALCULATION OF FUNDS AVAILABLE FOR TRANSFER
FROM
HIGHWAY MAINTENANCE AND OPERATING FUND
TO
TRANSPORTATION TRUST FUND**

**CALCULATION OF FUNDS AVAILABLE FOR TRANSFER
RECOMMENDED ALLOCATION OF ESTIMATED REVENUES
FISCAL YEAR 1989 - 90**

	ALLOCATED 1988-89	RECOMMENDED 1989-90	INCREASE (DECREASE)
HIGHWAY MAINTENANCE AND OPERATING FUND -----	-----	-----	-----
REVENUE AVAILABLE FOR ALLOCATION			
TOTAL STATE REVENUE SOURCES	\$862,107,600	\$876,689,800	\$14,581,400
TOTAL FEDERAL AID	389,785,000	262,914,800	(127,271,000)
TOTAL LOCAL REVENUE SOURCES	21,600,000	17,000,000	(4,600,000)
TOTAL REVENUE AVAILABLE FOR ALLOCATION	1,273,492,600	1,156,203,800	(117,289,800)
ALLOCATED FROM HIGHWAY MAINTENANCE AND OPERATING FUND			
FROM STATE REVENUE SOURCES	704,094,400	772,011,200	67,916,800
FROM FEDERAL AID	3,780,000	3,400,000	(380,000)
FROM LOCAL REVENUE SOURCES	0	0	0
TOTAL ALLOCATED FROM HIGHWAY MAINTENANCE AND OPERATING FUND	707,794,400	775,411,200	67,616,800
TRANSFERRED TO TRANSPORTATION TRUST FUND			
STATE REVENUE TRANSFERRED	158,013,200	104,677,800	(53,335,400)
FEDERAL AID TRANSFERRED	326,085,000	259,114,000	(128,971,000)
LOCAL REVENUE TRANSFERRED	21,600,000	17,000,000	(4,600,000)
TOTAL TRANSFERRED TO TRANSPORTATION TRUST FUND	505,698,200	380,791,800	(124,906,400)

**HIGHWAY CONSTRUCTION SUMMARY
TRANSPORTATION TRUST FUND**

**HIGHWAY CONSTRUCTION SUMMARY
RECOMMENDED ALLOCATION OF ESTIMATED REVENUES
FISCAL YEAR 1989 - 90**

TRANSPORTATION TRUST FUND -----	ALLOCATED 1988-89 -----	RECOMMENDED 1989-90 -----	INCREASE (DECREASE) -----
INTERSTATE CONSTRUCTION			
Bristol District	83,280,000	82,715,000	(565,000)
Salem District	4,810,000	4,135,000	(675,000)
Lynchburg District	---	---	---
Richmond District	67,889,000	13,249,000	(54,640,000)
Suffolk District	159,568,000	83,574,000	(75,994,000)
Fredericksburg District	10,307,000	13,448,000	3,141,000
Culpeper District	63,000	235,000	172,000
Stanton District	5,755,000	2,285,000	(3,470,000)
Northern Virginia District	35,189,000	35,465,000	276,000
TOTAL INTERSTATE CONSTRUCTION	\$286,777,000	\$155,098,000	(\$131,679,000)
PRIMARY CONSTRUCTION			
Bristol District	83,863,000	80,438,100	(3,424,900)
Salem District	24,529,000	22,423,800	(2,105,200)
Lynchburg District	22,419,000	20,438,900	(1,980,100)
Richmond District	23,993,000	27,913,100	3,920,100
Suffolk District	16,632,000	15,279,600	(1,352,400)
Fredericksburg District	19,063,000	17,197,000	(1,866,000)
Culpeper District	17,732,000	16,279,300	(1,452,700)
Stanton District	18,226,000	16,788,700	(1,437,300)
Northern Virginia District	25,280,000	21,273,700	(4,006,300)
TOTAL PRIMARY CONSTRUCTION	\$199,797,000	\$158,824,200	(\$40,972,800)

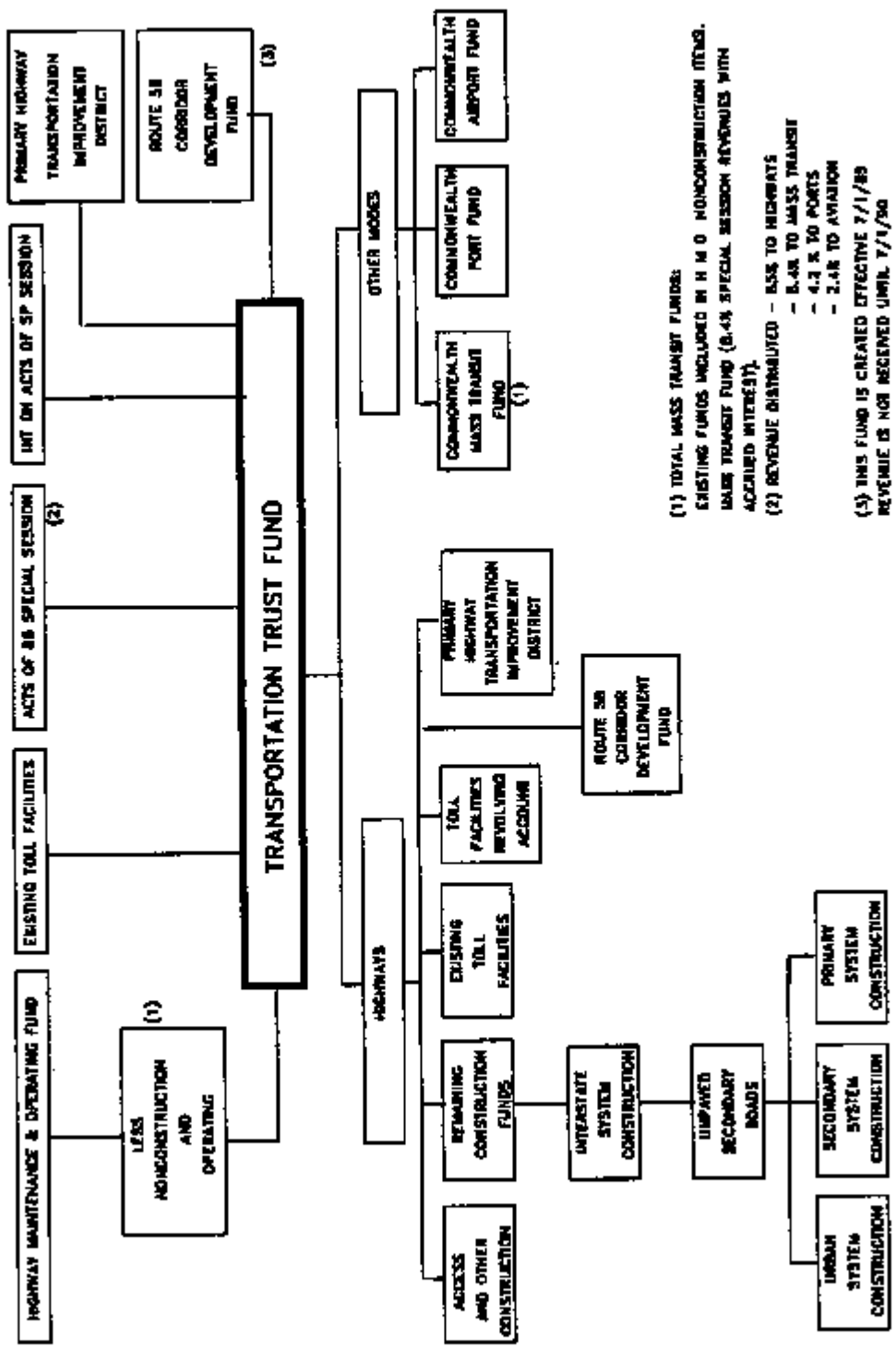
**HIGHWAY CONSTRUCTION SUMMARY
RECOMMENDED ALLOCATION OF ESTIMATED REVENUES
FISCAL YEAR 1989 - 90**

TRANSPORTATION TRUST FUND (continued)	ALLOCATED 1988-89	RECOMMENDED 1989-90	INCREASE (DECREASE)
-----	-----	-----	-----
SECONDARY CONSTRUCTION			
Bristol District	\$23,173,331	\$20,844,228	(\$2,327,103)
Salem District	21,242,341	19,578,761	(1,663,580)
Lynchburg District	16,264,827	15,331,606	(933,221)
Richmond District	27,197,261	25,839,475	(1,357,786)
Suffolk District	11,318,877	10,304,195	(1,014,682)
Fredericksburg District	12,397,392	11,640,264	(757,128)
Culpeper District	13,090,948	12,577,034	(513,914)
Staunton District	16,213,600	15,310,850	(902,750)
Northern Virginia District	40,209,703	38,555,705	(1,653,998)
TOTAL SECONDARY CONSTRUCTION	\$181,114,300	\$169,982,100	(\$11,132,200)
URBAN CONSTRUCTION			
Bristol District	\$4,673,000	\$4,218,562	(\$454,438)
Salem District	15,035,000	13,890,183	(1,144,817)
Lynchburg District	9,141,000	8,887,369	(253,631)
Richmond District	19,440,000	18,419,130	(920,870)
Suffolk District	73,635,000	71,642,125	(1,992,875)
Fredericksburg District	1,206,000	1,210,824	4,824
Culpeper District	3,290,000	3,112,441	(177,559)
Staunton District	8,761,000	8,491,621	(269,379)
Northern Virginia District	14,689,000	11,837,085	(2,851,915)
TOTAL URBAN CONSTRUCTION	\$149,848,000	\$148,909,600	(\$938,400)

**COMMONWEALTH TRANSPORTATION
FUNDS DISTRIBUTION**

TRANSPORTATION TRUST FUND DISTRIBUTION

FISCAL YEAR 1989 - 90

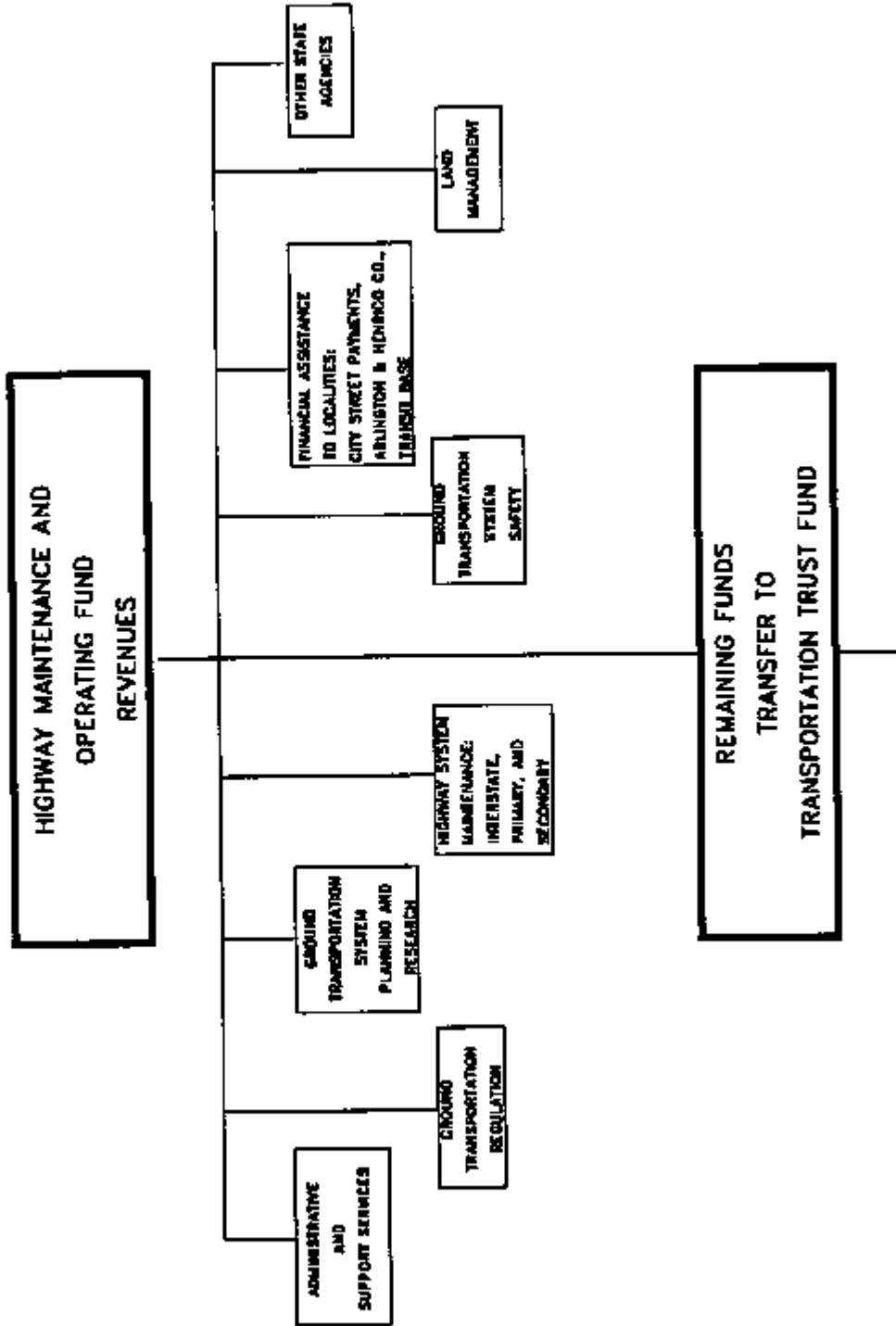


(1) TOTAL MASS TRANSIT FUNDS:
 EXISTING FUNDS INCLUDED IN H M O NONCONSTRUCTION ITEMS.
 MASS TRANSIT FUND (8.4% SPECIAL SESSION REVENUES WITH ACCRUED INTEREST).

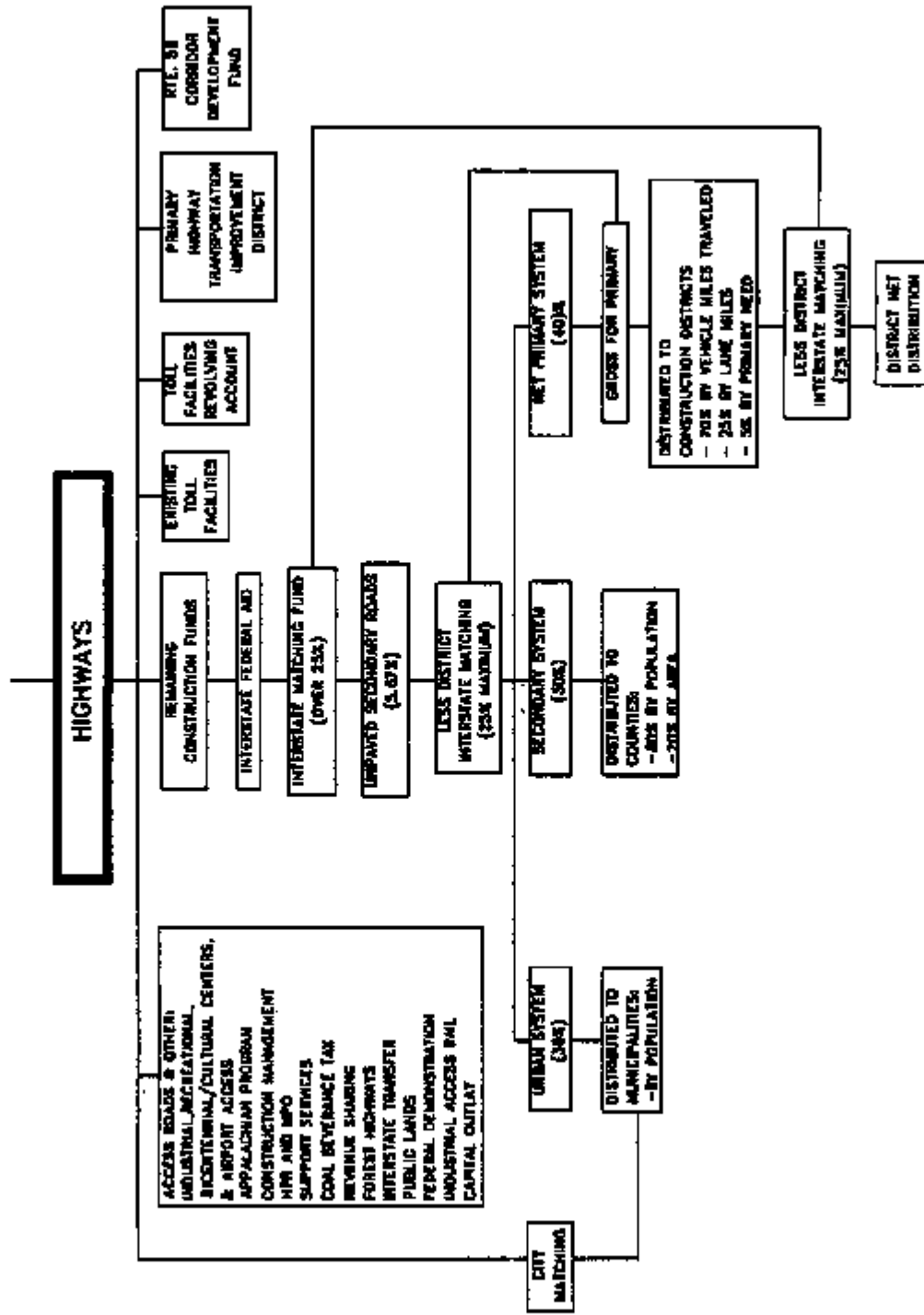
(2) REVENUE DISTRIBUTION - AS TO HIGHWAYS
 - 6.4% TO MASS TRANSIT
 - 4.2% TO PORTS
 - 2.4% TO AVIATION

(3) THIS FUND IS CREATED EFFECTIVE 7/1/89
 REVENUE IS NOT RECEIVED UNTIL 7/1/90

HIGHWAY MAINTENANCE AND OPERATING
 FUND DISTRIBUTION
 FISCAL YEAR 1989 - 90



**DISTRIBUTION OF HIGHWAY
TRANSPORTATION TRUST FUND REVENUES
FISCAL YEAR 1989 - 90**



FOOTNOTES

- 1/ This represents estimated revenue of \$450,000 per year for FY 89 and FY 90 for the logo sign program established by the Commonwealth Transportation Board in August 1988.
- 2/ The unallocated balance is the reconciled amount of the actual revenues and expenditures made versus the estimated revenues and respective allocations for the previous fiscal year. This unallocated balance is from FY 88.
- 3/ The 1989 Regular Session of the General Assembly enacted SB 791 which reduced the local match of municipalities from 5% to 2% for urban system projects.
- 4/ The 1987, 1988, and 1989 Regular Sessions of the General Assembly authorized the creation of Primary Highway Transportation Improvement Districts. These revenues and allocations represent the amount of the bond issue and District revenues dedicated for debt service for the Route 28 project. The Route 28 Primary Highway Transportation Improvement District is currently the only active special taxing district.
- 5/ The 1989 Appropriation Act, Chapter 668, provides for two-thirds of the pending Texaco oil overcharge settlement proceeds to be provided for mass transit capital needs.
- 6/ The 1989 Appropriation Act, Chapter 668, required VDOT to transfer \$800,000 to the Department of General Services for the ownership of the RCV South Hospital Building.
- 7/ The 1989 Regular Session of the General Assembly enacted HB 1684, which provided for a local option 1% income tax for Northern Virginia and the City of Norfolk. VDOT is required to provide the Department of Taxation with \$647,000 to implement the program. The legislation requires reimbursement of this amount when the localities enact the tax.
- 8/ This incorporates the figures stated in item 639 of the 1989 Appropriation Act, Chapter 668, which reflects the legislative changes in the amounts to be provided to all the access programs.
- 9/ The 1989 Regular Session of the General Assembly enacted HB 1588, which provided the forgiveness of debts certain localities incurred during improvements to the state's transportation network. These localities are:

1. Montross	\$99,917.29
2. Urbanna	\$3,784.27
3. Brandy	\$10,854.25
4. Saxia	\$5,532.90
5. Charlotte Court House	\$28,645.00
6. Chatham	\$5,302.87
- 10/ The amount of the pending oil overcharge settlement is not included in these calculations.

FOR FURTHER INFORMATION CONTACT:

**VIRGINIA DEPARTMENT OF TRANSPORTATION
1401 E. BROAD STREET, RICHMOND, VIRGINIA 23219**

**BUDGET DIVISION
P. R. KOLAKOWSKI, BUDGET DIRECTOR (804) 786-6066**

JUNE 1989

06/15/89

The next regular meeting will be held in
Norfolk, Virginia, on July 20, 1989.

The meeting adjourned at 12:45 p.m.

Approved:


Raymond D. Pettit
Chairman

Attested:


R. W. Smalley
Secretary